



Department of
Natural Resources and Parks
Wastewater Treatment Division
201 South Jackson Street, Suite 503
Seattle, WA 98104

PRESORTED
STANDARD
US POSTAGE
PAID
SEATTLE WA
PERMIT NO 836

Learn about the **Loop® Vehicle Maintenance Facility** project



Project snapshot

King County Wastewater Treatment Division is designing a new vehicle maintenance and staging facility for transporting Loop biosolids. The new facility will improve working conditions for drivers and mechanics, and helps the County meet new federal driving regulations. The facility is expected to be open in winter 2018.

For questions or comments, please contact: Bibiana Ocheke-Ameh at bibiana.ocheko-ameh@kingcounty.gov or 206-477-5604

www.kingcounty.gov/loop-vehicle-facility



Alternative Formats Available

Call 206-477-5371 or TTY: 711

Printed on recycled paper. Please recycle.
1611_8074m_LoopMaintFacilityNews-4.indd
Cover photo by Danny Raphael



King County
Department of Natural Resources and Parks
Wastewater Treatment Division

Winter 2016

loop VEHICLE MAINTENANCE FACILITY NEWS

New Loop® Vehicle Maintenance Facility project in design

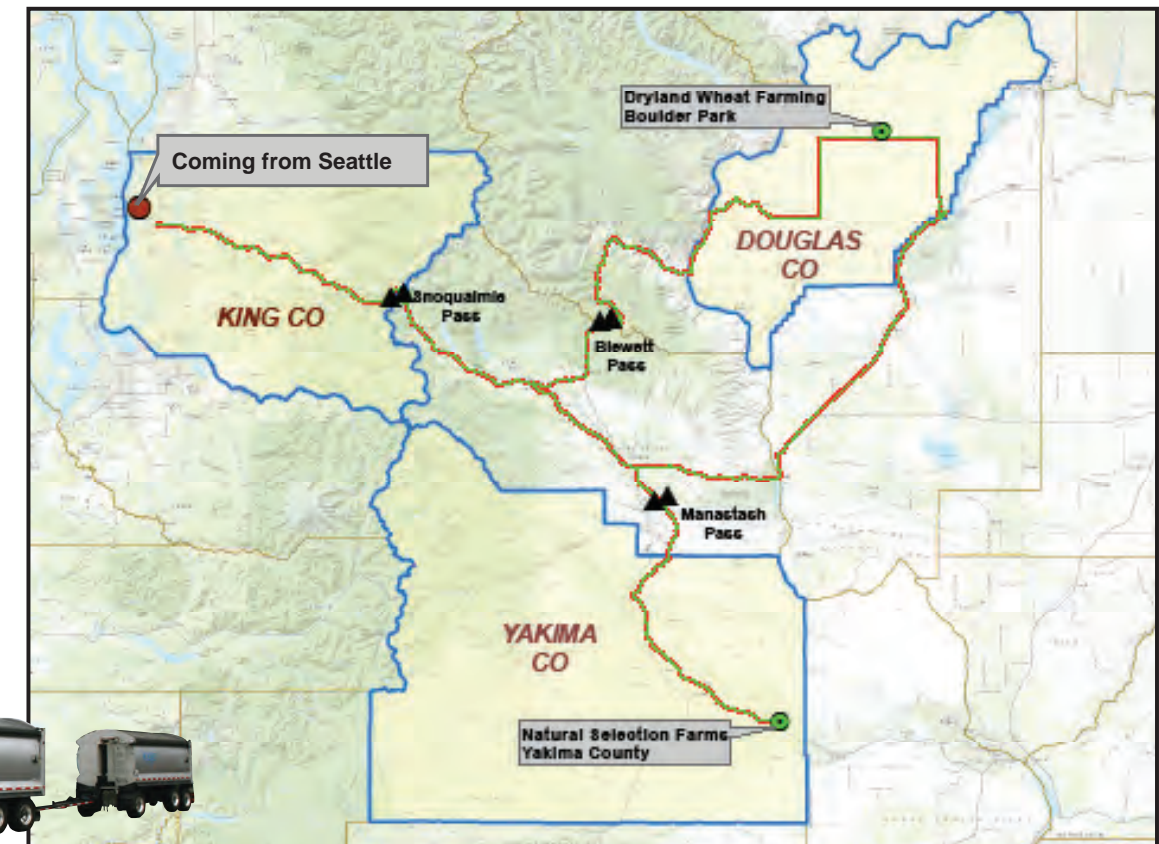
King County Wastewater Treatment Division (WTD) is designing a new vehicle maintenance and staging facility for transporting Loop® (Loop) biosolids. The new facility, expected to be open in winter 2018, will be located in North Bend (exit 34 off I-90) on County-owned land.

Why is King County building this facility?

- The current vehicle facility is located in south Seattle, on a space leased from the King County Airport. The lease on this land is now ending without the option to renew, requiring WTD to relocate the facility.
- Helps meet new federal regulations that limit the time a driver can be on the road.
- This facility reduces driving time and improves safety for every traveler on our highways and roads.

Where do Loop trucks go?

Currently, Loop trucks transport material to our forestry projects within King County and agricultural projects in Douglas and Yakima counties. To accomplish this drivers navigate city traffic, mountain passes and inclement weather.



About the new facility

- The facility will include a maintenance shop, parking for staff, and Loop vehicles.
- The site will retain a city-required buffer of existing trees surrounding the facility.
- Vehicles will enter the site on SE 144th Street and exit the site on SE 146th Street.
- The facility will be designed to reduce idling time, noise and emissions.
- Normal maintenance hours are 6 a.m. to 6 p.m. daily. There will be activities at this site 24 hours daily with trucks leaving and entering from their trips at different times of the day.
- The facility will be used by King County's haul contractor. This includes drivers, mechanics, and operational managers.

Project schedule and next steps

The County will design and construct the new facility in three phases. The facility is expected to open in winter 2018.

The design phase began in fall 2016 and will continue until fall 2017. This phase includes acquiring permits, creating detailed design and engineering specs for the new building, and determining details about how the facility will look. During this phase the County will solicit input from the public on some elements of the facility design.

Working with the community

King County will work with the public, community groups, and other key stakeholders to provide project information, identify potential impacts, and involve the community in project design where possible.

Community members can expect:

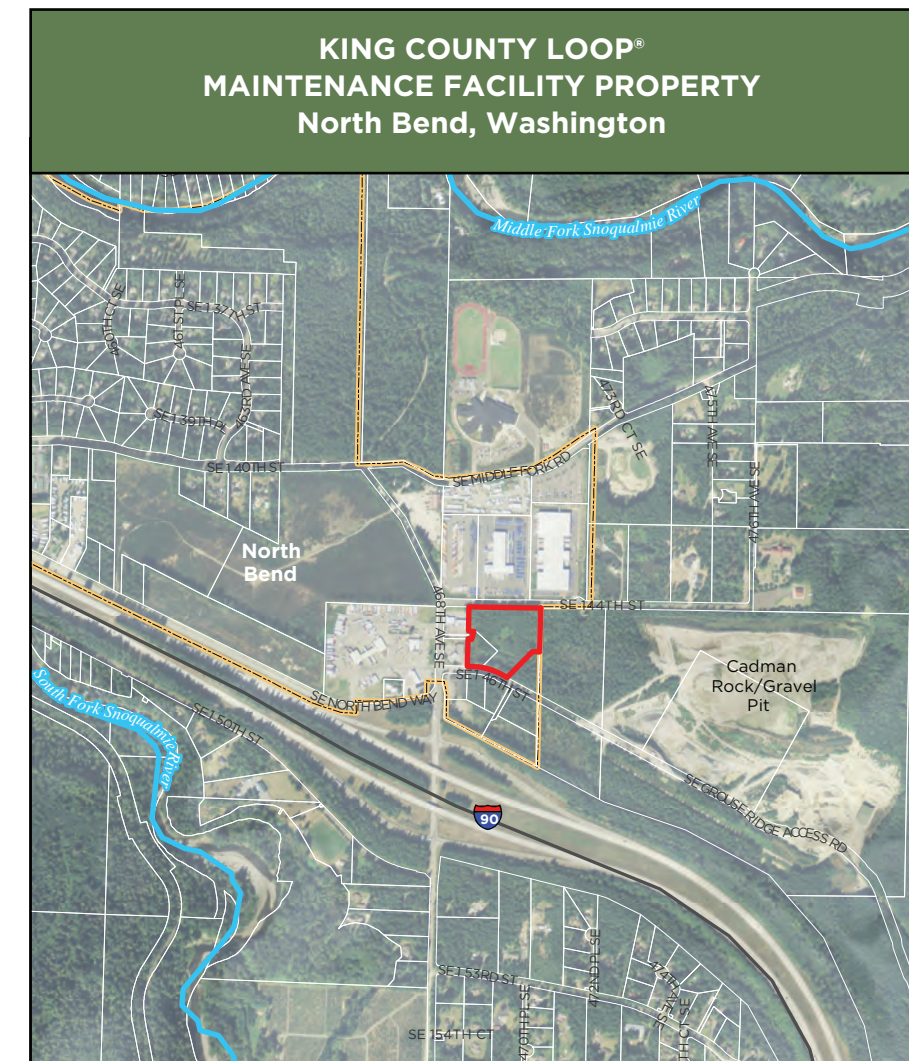
- Advance notice of meetings and construction
- Community group and neighbor briefings
- Project newsletters and fliers
- Project web page updates
- 24/7 construction hotline

Stay involved!

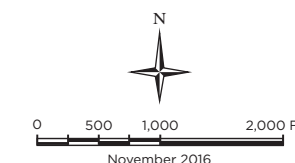
Contact King County to:

- Sign up for the project email list at www.kingcounty.gov/loop-vehicle-facility
- Ask questions
- Request a briefing
- Contact:
Bibiana Ocheke-Ameh at bibiana.ocheke-ameh@kingcounty.gov OR
206-477-5604

PLANNING Fall 2016 – Winter 2016	DESIGN Winter 2016 – Fall 2017	CONSTRUCTION Fall 2017 – Winter 2018	FACILITY OPEN
<ul style="list-style-type: none"> • Study site conditions (plants, animals, soils, cultural resources, topography, etc.) to determine if there are specific site constraints • Begin preliminary facility design 	<ul style="list-style-type: none"> • Acquire necessary permits and complete required environmental review • Work with neighbors and the community to understand needs and constraints during construction and facility operation • Gather public input on some project elements. Specific topics for community feedback are being identified, but could include choice of plants for landscaping and color of building • Design the facility structures 	<ul style="list-style-type: none"> • Hire a construction contractor • Build the new facility • Work with neighbors and the community to provide progress updates and notice of construction • Staff a 24/7 hotline during construction 	<p>Winter 2018</p>



- King County Loop® Maintenance Facility Property
- Parcel
- City limit
- River
- Highway



What are biosolids?

Loop biosolids are a nutrient-rich soil amendment created from King County wastewater. As it has for the past 40 years, the County produces Loop from solids extracted during the wastewater treatment process. Loop is used on farms and forests by commercial growers in both Eastern and Western Washington.

Learn more about Loop biosolids at www.loopforyoursoil.com.

