



King County

Department of Natural Resources and Parks
Wastewater Treatment Division

NORTH MERCER ISLAND/ENATAI Sewer Upgrade Project

September 2022

Pipe installation on SE 22nd St is underway.

Background:

King County crews are installing pipe via “open cut” trenching. During open-cut construction, crews will complete the following activities:

- **Excavation:** Crews will saw cut, remove asphalt, and dig from the roadway surface to the pipe depth.
- **Installation:** Crews will lower pipe segments into the trench and fuse them together.
- **Temporary Restoration:** Crews will backfill the excavation and temporarily restore the roadway surface where the pipe has been installed.
- **Final Restoration:** Once all the pipe in this area has been installed, we will fully restore all disturbed areas based on permit conditions agreed upon with the City of Mercer Island.

Traffic control on SE 22nd St (see map on reverse):

We have approval from the City of Mercer Island to use temporary signals, also known as “automatic flaggers,” to maintain one lane of alternating traffic around the work area.

All driveways and intersections affected by the work area on SE 22nd St will have temporary signals or driveway assistance devices to help neighbors come and go from their homes during this work.

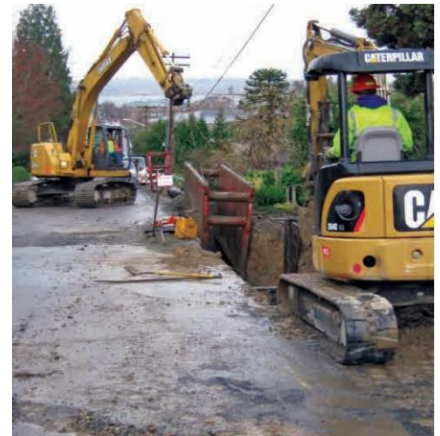
What to expect during pipe installation:

- Permitted work hours are 7 a.m. to 7 p.m. Monday to Friday and 9 a.m. to 6 p.m. on Saturday.
 - The work schedule is subject to change depending on weather and other factors.
- Some homes may be subject to temporary daytime driveway access interruptions.
 - If we need to close your driveway temporarily, we will attempt to notify you in person on the day of the closure by knocking on your door.
 - To maintain access during trenching activities, crews will lay metal plates over the trench.
 - **If you need to enter or exit your driveway while crews work in front of your house, please contact the 24-hour construction hotline, 206-263-1915.**
- There will be noise, dust, and vibrations typical of an active construction project.
- Emergency vehicle access will be maintained during construction.
- Services such as garbage, recycling, compost, and mail will not be interrupted.

For more information:

Contact the community services team at 206-477-5415 or email NMEsewer@kingcounty.gov

Visit the project web page at www.kingcounty.gov/MercerEnataiSewer.



Example of crews securing an open-cut trench to prepare for pipe installation.



Excavations to install the pipe for this project range in depth from 15 – 30 feet. Do not approach open excavations for your safety and the safety of our crews.

ALTERNATIVE FORMATS AVAILABLE: 206-477-5371 / 711 (TTY Relay)

Traffic Control on SE 22nd ST:



Temporary signals will direct one lane of alternating traffic around the work area.