



NORTH MERCER ISLAND/ENATAI Sewer Upgrade Project

May 2023

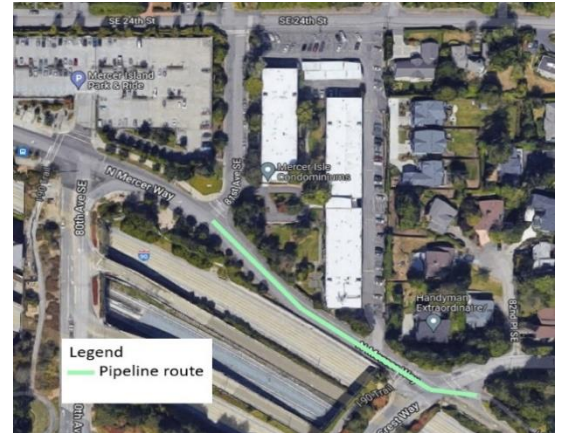
Construction on North Mercer Way starting May 15th Expect closures and detours throughout this work

A new sewer pipeline for Mercer Island:

King County's contractor is installing a new sewer pipe across north Mercer Island. The new sewer pipe mostly follows non-arterial streets. However, there is a 500-foot segment of pipe under North Mercer Way just east of the Mercer Island Park and Ride.

Starting May 15th, work will begin on and around North Mercer Way between 80th Avenue Southeast and Southeast 26th Street. Construction will take place in four phases and will be directly followed by restoration. We anticipate work on North Mercer Way to be complete approximately two months after the start of the closures.

Crews will use "open-cut" trenching to lay the pipe underground. During open-cut, crews dig a trench to the pipe depth and lay the pipe. The pipe is then buried, and the surface is restored. To learn more about this process, check out our [video](#).

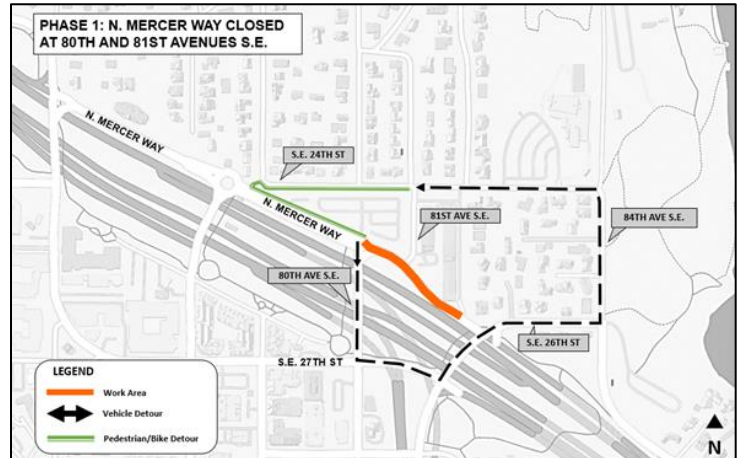


Map of the pipe segment under North Mercer Way

**Construction schedules can change based on factors such as site conditions, weather, and crew/material availability. We will notify you in advance of any major changes to the planned schedule.*

Phase 1: N. Mercer Way closed at 80th Ave S.E.

- N. Mercer Way will be closed at 80th and 81st Avenues S.E.
 - There will be no right turns to eastbound N. Mercer Way from 80th Ave S.E.
- Drivers will be detoured right onto 80th Ave S.E., S.E. 27th St, Island Crest Way, S.E. 26th St, 84th Ave S.E. and S.E. 24th St to avoid work zone.
- Pedestrians and bicyclists will be detoured away from the work zone onto the shared-use sidewalk alongside N. Mercer Way and merge along S.E. 24th St via the connector trail.



NORTH MERCER ISLAND/ENATAI

Sewer Upgrade Project

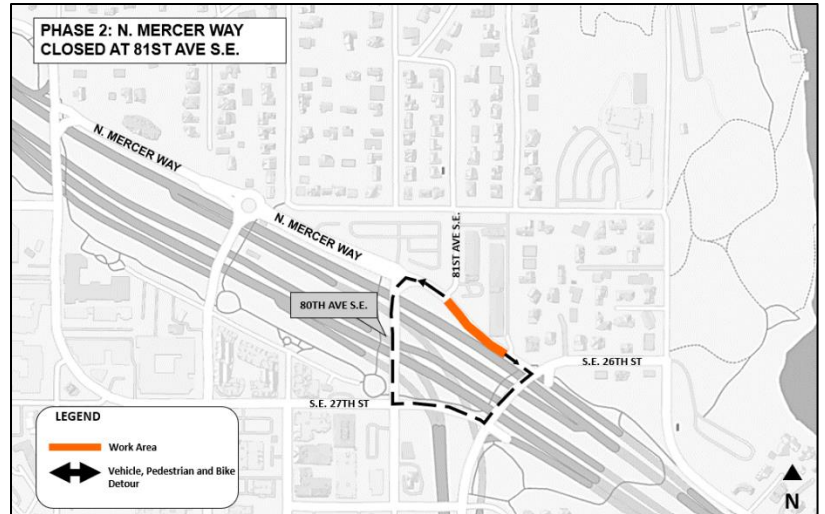
Talk to us! For more information or to schedule a virtual meeting, please contact:

The community services team at **425-305-3578** or **NMEsewer@kingcounty.gov**

Visit the project Webpage at **www.kingcounty.gov/MercerEnataiSewer**

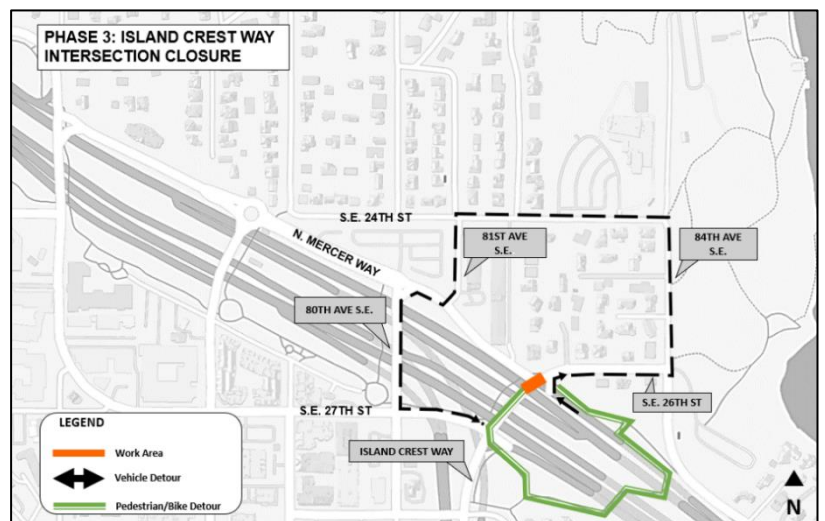
Phase 2: N. Mercer Way closed near 81st Ave S.E.

- The intersection of North Mercer Way near 81st Ave S.E. will be closed.
 - Eastbound N. Mercer Way will be closed starting at 81st Ave S.E.
 - Westbound N. Mercer Way will be closed from the Mercer Isle Condos exit driveway.
- Drivers, pedestrians, and bicyclists will be detoured around the work area down 80th Ave S.E. onto S.E. 27th and onto Island Crest Way.



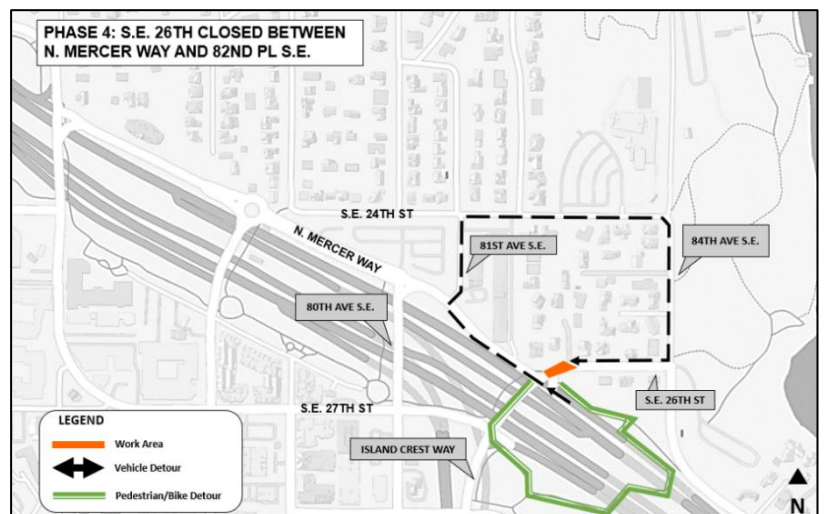
Phase 3: Island Crest Way intersection closed

- The intersection of N. Mercer Way, Island Crest Way, and S.E. 26th St will be closed.
 - Eastbound N. Mercer Way will be closed starting at 81st Ave S.E.
 - Northbound Island Crest Way will be closed starting at S.E. 27th St
 - Westbound S.E. 26th St will be local access only starting at 84th Ave S.E.
- Drivers will be detoured around the work area using S.E. 26th St, 84th Ave S.E., S.E. 24th St, 81st Ave S.E., 80th Ave S.E. and S.E. 27th St.
- Pedestrians and bicyclists will be routed along S.E. 27th St and the I-90 trail connector.



Phase 4: S.E. 26th closed between N. Mercer Way and 82nd Pl S.E.

- N. Mercer Way will remain open during construction on S.E. 26th St.
- Metro buses will be routed through the detour routes.
- Pedestrians and bicyclists will be routed along Island Crest Way and the I-90 trail connector.



What to expect:

- All work will be performed in the public right-of-way.
- Typical work hours are 7 a.m. to 7 p.m. Monday to Friday and 9 a.m. to 6 p.m. on Saturday.
- Noise, dust, and vibrations typical of an active construction project.
- Emergency vehicle access will be maintained.
- Garbage, recycling, composting, and mail service should be maintained.
 - If services are interrupted, please call the 24-hour hotline at 425-305-3587.