



King County

Department of Natural Resources and Parks
Wastewater Treatment Division

NORTH MERCER ISLAND/ENATAI Sewer Upgrade Project

June 5, 2023

Pipe installation on North Mercer Way continues

81st Avenue Southeast at North Mercer Way will partially reopen as soon as June 7

Crews completed the first phase of construction for N. Mercer Way:

Work on N. Mercer Way started in early May. Crews completed phase 1 of construction and will partially reopen 81st Ave. S.E. for phase 2 as early as June 7. We anticipate phase 2 of the N. Mercer Way closure to be in place for approximately one week*.

For more information regarding all four phases of construction, [please read our previous notice.](#)

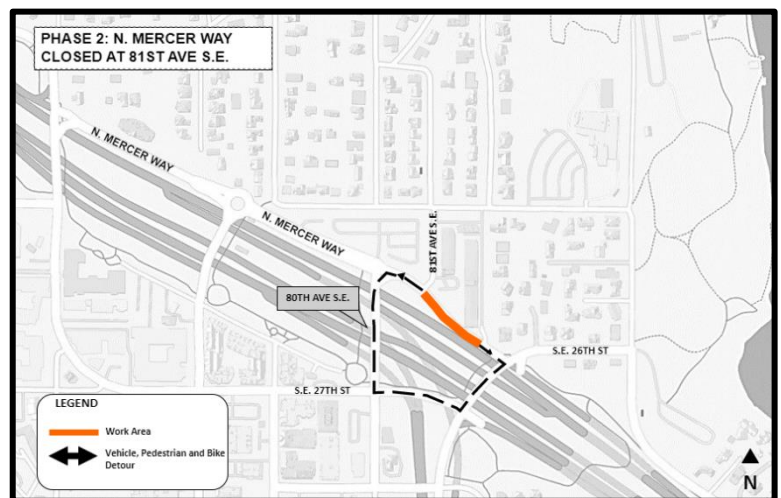
*Construction schedules can change based on factors such as site conditions, weather, and crew/material availability. We will notify you in advance of any major changes to the planned schedule.

Phase 2 begins as early as June 7: N. Mercer Way closed east of 81st Ave. S.E.

- N. Mercer Way will be closed east of 81st Ave. S.E.
 - There will be no eastbound turns onto N. Mercer Way from 81st Ave. S.E.
 - There will be no westbound turns onto N. Mercer Way from the Mercer Isle Condos exit driveway.
- Drivers, pedestrians, and bicyclists will detour around the work area down 80th Ave. S.E. onto S.E. 27th St. and onto Island Crest Way.

What to expect:

- All work will be performed in the public right-of-way.
- Typical work hours are 7 a.m. to 7 p.m. Monday to Friday and 9 a.m. to 6 p.m. on Saturday for the duration of this work.
- Noise, dust, and vibrations typical of an active construction project.
- Emergency vehicle access will be maintained.
- Garbage, recycling, composting, and mail service should be maintained.
 - If services are interrupted, please call the 24-hour hotline at 425-305-3587.



Detour for phase 2 of construction on N. Mercer Way

NORTH MERCER ISLAND/ENATAI

Sewer Upgrade Project

Talk to us! For more information or to schedule a virtual meeting, please contact:
The community services team at **425-305-3578** or **NMEsewer@kingcounty.gov**
Visit the project web page at www.kingcounty.gov/MercerEnataiSewer