



King County

Department of Natural Resources and Parks
Wastewater Treatment Division

NORTH MERCER ISLAND/ENATAI Sewer Upgrade Project

June 2023

Pipe installation on North Mercer Way moves toward Island Crest Way

Upcoming intersection closures and detour routes:

As early as tomorrow, June 8, we will begin shifting traffic control east on N. Mercer Way, for phases 2, 3, and 4 of pipe installation. 81st Ave. S.E. will re-open at N. Mercer Way.

As early as June 9, we will begin phase 3 of construction and planned detours. During this phase, we will close the intersection of N. Mercer Way, Island Crest Way, and S.E. 26th St. for about four days*.

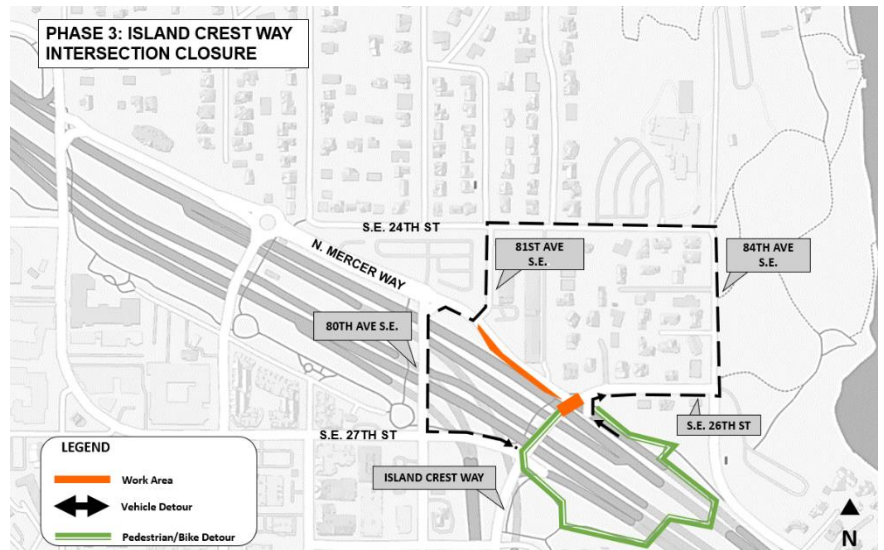
Then as early as June 12, we will move into phase 4 of our planned detours. During phase 4, we will close S.E. 26th St. between N. Mercer Way and 82nd Pl. S.E. We anticipate the phase 4 closure to continue through early July.

Eastbound N. Mercer Way will remain closed between Island Crest Way and 81st Ave. S.E. during all future phases of work on N. Mercer Way.

*Construction schedules can change based on factors such as site conditions, weather, and crew/material availability. We will notify you in advance of any major changes to the planned schedule.

Phase 3: Island Crest Way intersection closure

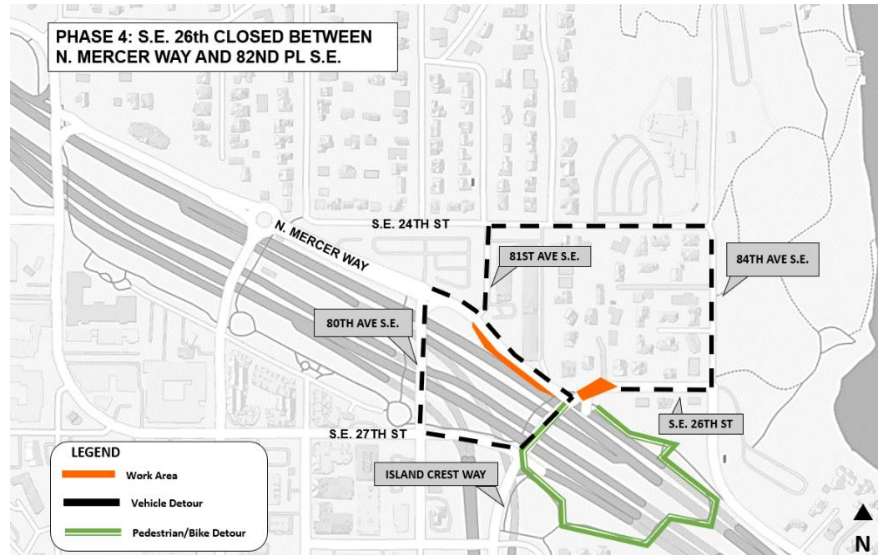
- The intersection of North Mercer Way, Island Crest Way, and S.E. 26th St. will be closed.
- Drivers travelling westbound from the I-90 offramp will be detoured to S.E. 26th St.
- Drivers travelling eastbound on N. Mercer Way will be detoured to 80th Ave. S.E. or 81st Ave S.E.
- Pedestrians and bicyclists will be routed to the Luther Burbank/I-90 trail connector.



Detour for phase 3 of N. Mercer Way construction.

Phase 4: S.E. 26th St. closed between N. Mercer Way and 82nd Pl. S.E.

- Drivers travelling westbound from I-90 to N. Mercer Way will remain on N. Mercer Way.
- Drivers travelling eastbound on N. Mercer Way will be detoured to 80th Ave. S.E. or 81st Ave. S.E.
- Drivers turning onto S.E. 26th from the I-90 off-ramp will be detoured from N. Mercer Way to 81st Ave S.E.
- Pedestrians and bicyclists will be routed to the Luther Burbank/I-90 trail connector.



Detour for phase 4 of N. Mercer Way construction

What to expect:

- Eastbound N. Mercer Way will be closed starting at 81st Ave S.E.
- Metro buses will be routed through the detour routes.
- Pay close attention to signed detour routes and drive slowly for the safety of yourself and our crews.
- All work will be performed in the public right-of-way.
- Typical work hours are 7 a.m. to 7 p.m. Monday to Friday and 9 a.m. to 6 p.m. on Saturday for the duration of this work.
- Noise, dust, and vibrations typical of an active construction project.
- Emergency vehicle access will be maintained.
- Garbage, recycling, composting, and mail service should be maintained.
 - If services are interrupted, please call the 24-hour hotline at 425-305-3587.

NORTH MERCER ISLAND/ENATAI

Sewer Upgrade Project

Talk to us! For more information or to schedule a virtual meeting, please contact:
The community services team at **425-305-3578** or **NMEsewer@kingcounty.gov**
Visit the project web page at www.kingcounty.gov/MercerEnataiSewer

ALTERNATE FORMATS AVAILABLE:
206-477-5371 OR TTY RELAY: 711