



King County

Department of Natural Resources and Parks
Wastewater Treatment Division

NORTH MERCER ISLAND/ENATAI Sewer Upgrade Project

June 2023

UPDATE: Changes to traffic control and planned detours for the North Mercer Way closure

Phases 3 and 4 will be combined as early as June 16:

Last week, we [shared phase 4 of our planned detours](#) for the North Mercer Way closure will begin as early as this week. We have received approval from the City of Mercer Island to update our work plan. Instead of moving between phases 3 and 4 like we originally planned, we will combine the two work areas. The combined work area will help keep construction equipment and materials out of active lanes of traffic.

In our updated plan, the intersection of N. Mercer Way, Island Crest Way, and S.E. 26th St. will continue to be closed. Additionally, S.E. 26th St will close between N. Mercer Way and 82nd Pl. S.E. We anticipate this combined closure to continue until the end of June.*

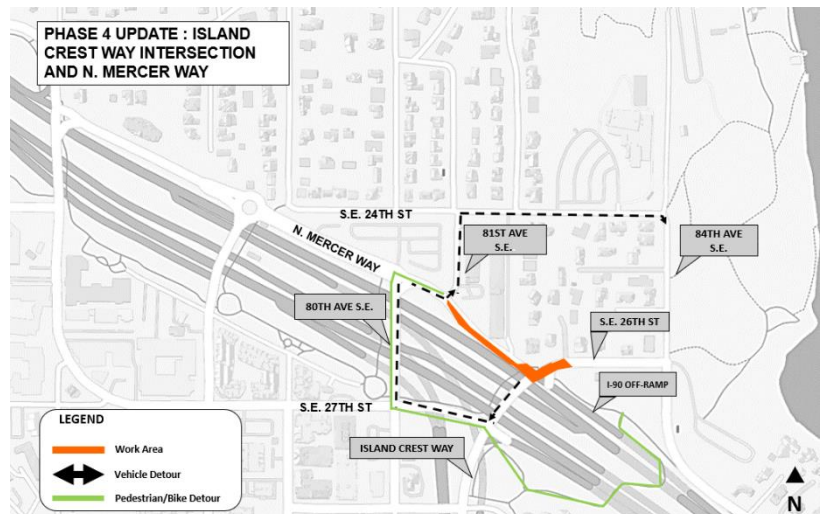
*Construction schedules can change based on factors such as site conditions, weather, and crew/material availability. We will notify you in advance of any major changes to the planned schedule.

Update to phase 4: Island Crest Way intersection and N. Mercer Way closure

- Drivers travelling westbound from I-90 to N. Mercer Way will turn left onto Island Crest Way to follow the detour.
- Drivers travelling eastbound on N. Mercer Way will be detoured to 80th Ave. S.E. or 81st Ave. S.E.
- Northbound Island Crest Way will be closed at S.E. 27th St.
- Pedestrians and bicyclists will be routed to the Luther Burbank/I-90 trail connector via 80th Ave. S.E. and S.E. 27th St.

What to expect:

- Pay close attention to signed detour routes and drive slowly for the safety of yourself and our crews.
- All work will be performed in the public right-of-way.
- Metro buses will be routed through the detour routes.
- Typical work hours are 7 a.m. to 7 p.m. Monday to Friday and 9 a.m. to 6 p.m. on Saturday for the duration of this work.
- Noise, dust, and vibrations typical of an active construction project.
- Emergency vehicle access will be maintained.
- Garbage, recycling, composting, and mail service should be maintained.
 - If services are interrupted, please call the 24-hour hotline at 425-305-3587.



Talk to us! For more information or to schedule a virtual meeting, please contact:
The community services team at **425-305-3578** or **NMEsewer@kingcounty.gov**
Visit the project web page at www.kingcounty.gov/MercerEnataiSewer

ALTERNATE FORMATS AVAILABLE:
206-477-5371 OR TTY RELAY: 711