



**King County**

Department of Natural Resources and Parks  
Wastewater Treatment Division

# NORTH MERCER ISLAND/ENATAI Sewer Upgrade Project

August 2023

## North Mercer Way closed between 81st Avenue Southeast and Southeast 26th Street as early as August 21 Construction on underground utilities expected for approximately 10 days

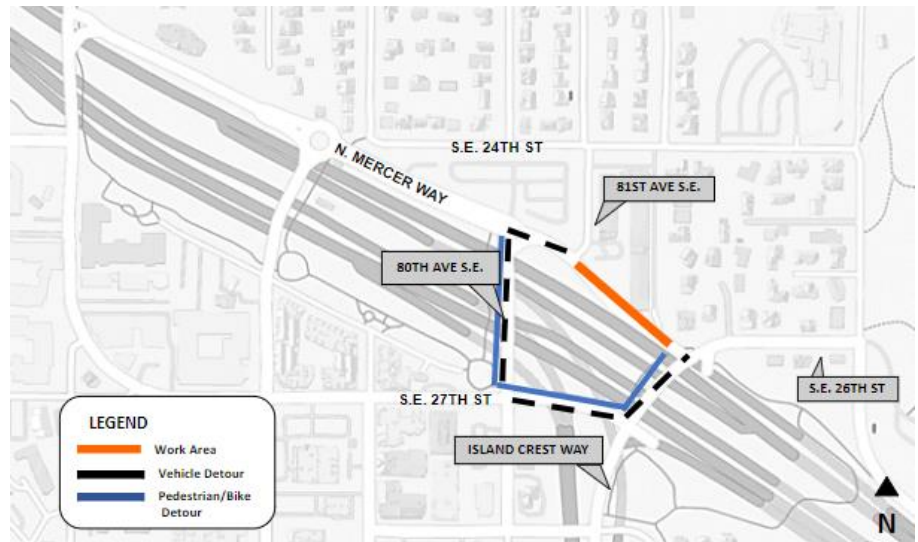
### Expect detours as early as August 21\*:

As early as August 21st, N. Mercer Way will close between 81st Ave S.E. and Island Crest Way/S.E. 26th St while crews repair utilities. Island Crest Way and S.E. 26th St will remain open for northbound and southbound travel. Sidewalks near the work area will close intermittently to maintain safety for pedestrians and crew. Following utility repairs, crews will restore and repave the roadway. No night work is planned at this time.

\*Construction schedules can change based on factors such as site conditions, weather, and crew/material availability. We will notify you in advance of any major changes to the planned schedule.

### Please follow all posted detours:

- Vehicles heading east/west along N. Mercer Way will detour around the work area via N. Mercer Way, 80th Ave S.E., S.E. 27th St., and Island Crest Way.
- Vehicles heading north/south along Island Crest Way, S.E. 26th St, and 81st Ave S.E. will not need to detour.
- Vehicles will be able to turn right onto N. Mercer Way from 81st Ave S.E.
- Vehicles can enter and exit the Mercer Isle Condos driveway via 81st Ave S.E.
- Sidewalks will close intermittently. Pedestrians will be detoured along trails following Island Crest Way, S.E. 27th St, and 80th Ave S.E.
- Bicyclists will be directed along the pedestrian detour route on the I-90 trail.



Detours will remain in place around the clock during work in this area.

### What to expect:

- All work will be performed in the public right-of-way.
- Typical work hours are 7 a.m. to 7 p.m. Monday to Friday and 9 a.m. to 6 p.m. on Saturday for the duration of this work.
- Detours will remain in place around the clock during this work.

- Noise, dust, and vibrations typical of an active construction project.
- Emergency vehicle access will be maintained.
- Garbage, recycling, composting, and mail service will be maintained.
  - If services are interrupted, please call the construction hotline at 425-305-3587.

## NORTH MERCER ISLAND/ENATAI

## Sewer Upgrade Project

**Talk to us!** For more information or to schedule a meeting, please contact:  
The community services team at **425-305-3578** or **NMEsewer@kingcounty.gov**  
Visit the project web page at [www.kingcounty.gov/MercerEnataiSewer](http://www.kingcounty.gov/MercerEnataiSewer)

ALTERNATE FORMATS AVAILABLE:  
206-477-5371 OR TTY RELAY: 711