

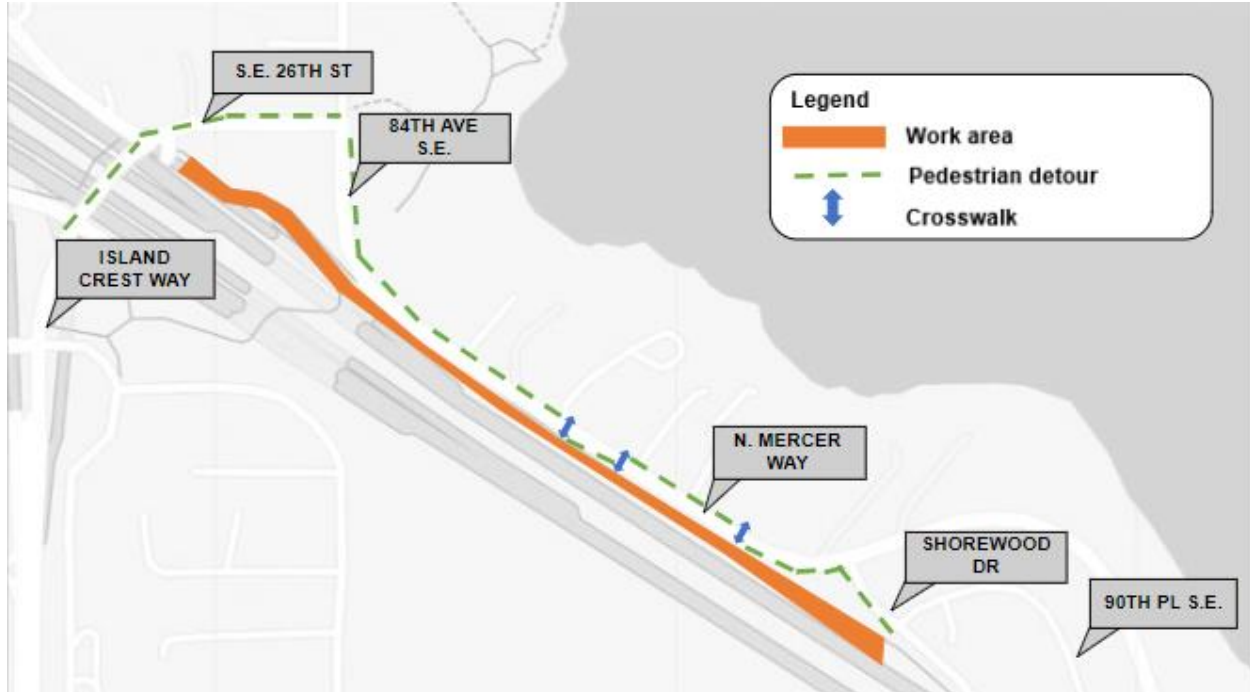


NORTH MERCER ISLAND/ENATAI Sewer Upgrade Project

September 2023

Updated Pedestrian Detour Map available

The I-90 Trail is closed between 84 Avenue Southeast and Shorewood Drive. The pedestrian detour runs along North Mercer Way, including some crosswalks. Thank you for your patience during construction.



NORTH MERCER ISLAND/ENATAI

Sewer Upgrade Project

Talk to us! For more information or to schedule a virtual meeting, please contact:

The community services team at **425-305-3578** or **NMEsewer@kingcounty.gov**

Sign up for text alerts. Text **KING MERCERSEWER** to **468-311**.

Visit the project Webpage at **www.kingcounty.gov/MercerEnataiSewer**



@KingCountyWTD

