



King County

Department of Natural Resources and Parks
Wastewater Treatment Division

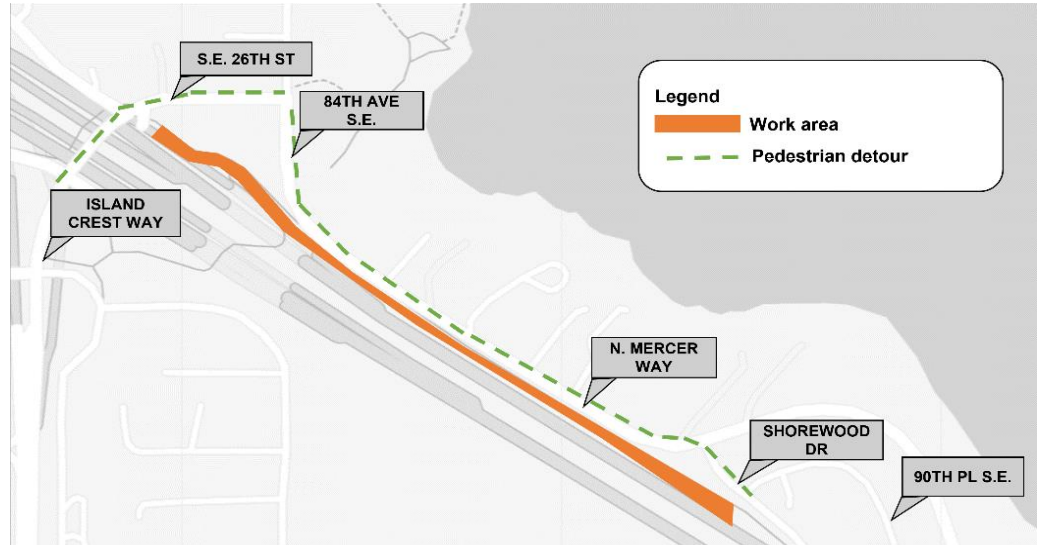
NORTH MERCER ISLAND/ENATAI Sewer Upgrade Project

July
2023

I-90 trail closed between Southeast 26th Street and Shorewood Drive as early as July 10*

Expect pedestrian and bike detours and single lane alternating traffic on North Mercer Way

King County will close the I-90 trail between S.E. 26th St and Shorewood Dr as early as July 10. Pedestrians will be detoured from the trail to a protected gravel path along N. Mercer Way and sidewalks on 84th Ave S.E. and S.E. 26th St. Bikes will merge with along N. Mercer Way and 84th Ave S.E. and S.E. 26th St. Pedestrians and bicyclists should follow marked detour signage and pavement markings. During working hours, single lane alternating traffic will be in place to support utility installation and paving operations.



I-90 trail detours will extend between S.E. 26th St and Shorewood Dr.

Crews are working on the I-90 trail on Mercer Island in sections. Within each section, crews use a construction technique called “open-cut” trenching to bury the pipe where it needs to go. To maintain safety, the trail will remain closed around the clock until the trail has been repaved.

*Construction schedules can change based on factors such as site conditions, weather, and crew/material availability. We will notify you in advance of any major changes to the planned schedule.

Expect detours during this work:

- Flaggers will direct alternating two-way traffic through a single lane on N. Mercer Way.
- Pedestrians will be detoured onto a temporary gravel path along N. Mercer Way and the sidewalks on 84th Ave S.E. and S.E. 26th St.
- Bicyclists will be detoured onto N. Mercer Way, 84th Ave S.E., and S.E. 26th St to merge with vehicles.

SHARE THE ROAD:

Bicycles and vehicles will share a single lane along N. Mercer Way between S.E. 26th St and Shorewood Dr. For everyone's safety, please move slowly and cautiously through the work area.

What to expect during trail closures:

- Speed limits on North Mercer Way will reduce to 20 MPH near the construction area.
- Trenches for open-cut construction will be covered with steel plates at the end of each workday.
- All work will be performed in the public right-of-way.
- Typical work hours are 7 a.m. to 7 p.m. Monday to Friday and 9 a.m. to 6 p.m. on Saturday for the duration of this work.
- Noise, dust, and vibrations typical of an active construction project.
- Emergency vehicle access will be maintained.
- Garbage, recycling, composting, and mail service will be maintained.
 - If services are interrupted, please call the construction hotline at 425-305-3587.

NORTH MERCER ISLAND/ENATAI**Sewer Upgrade**

Talk to us! For more information or to schedule a meeting, please contact:
The community services team at **425-305-3578** or **NMEsewer@kingcounty.gov**
Visit the project web page at www.kingcounty.gov/MercerEnataiSewer

ALTERNATE FORMATS AVAILABLE:
206-477-5371 OR TTY RELAY: 711