



NORTH MERCER ISLAND/ENATAI Sewer Upgrade Project

October 31, 2022

Please join us on Monday, November 7, for a neighborhood walk on SE 35th Place.

Please join King County Wastewater Treatment Division on Monday, November 7 at 4 p.m. for a neighborhood walk on SE 35th Place. Project staff and the contractor will meet in the cul-de-sac on SE 35th PL and walk the work area with neighbors from 4 to 5 p.m. *See the map below.*

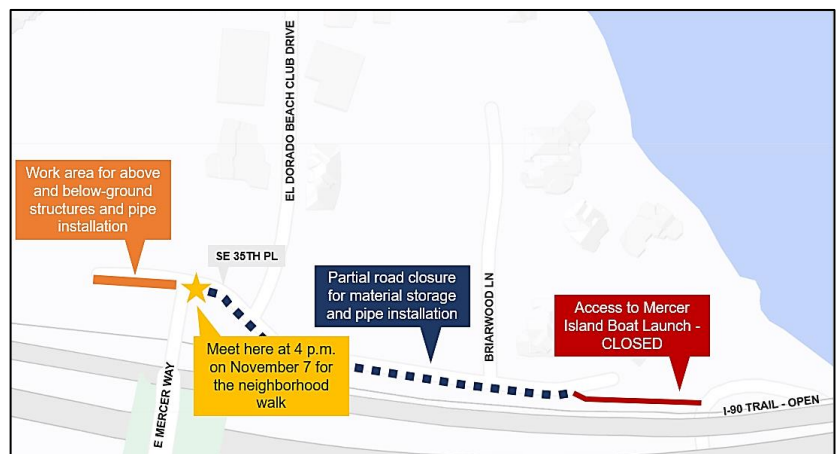
During the walk, the team will share more information about the location of the new sewer pipe and associated equipment and what neighbors can expect as construction starts.

We'll walk rain or shine, so please dress for the weather and wear sturdy shoes for walking.

To request special accommodations or if you cannot attend, please contact the community relations team by leaving a voicemail on either of our hotlines at 206-263-1915 and 425-305-3578 or by emailing NMEsewer@kingcounty.gov.

Learn more:

- Sign up for location-specific email lists by scanning the QR Code to the right.
- Changes to email and text preferences must be done using an internet browser. Changes submitted via text to KING MERCERSEWER at 468-311 will not be applied.
- Read about work on SE 35th PL by visiting the project website www.kingcounty.gov/MercerEnataiSewer.
- Contact the community relations team by leaving a voicemail on either of our hotlines at 206-263-1915 and 425-305-3578 or by emailing NMEsewer@kingcounty.gov.



Meet on the corner of E Mercer Way and SE 35th PL at 4 p.m. on November 7.