



NORTH MERCER ISLAND/ENATAI Sewer Upgrade Project

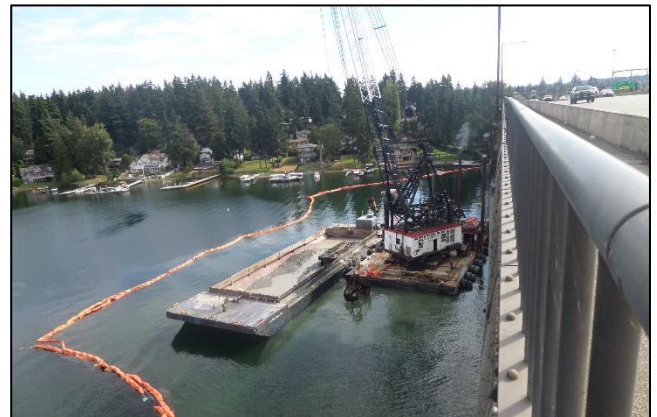
September 2023

Underwater pipe installation moves toward Mercer Island in October

This summer, crews began installing pipe in Lake Washington’s East Channel. As early as October 2, construction equipment will move towards Mercer Island. In-water pipe installation is planned to last through early 2024. For more details, [check out our past notices on our project website.](#)

Near the work area, people will see:

- Work between 6 a.m. – 6 p.m. Monday through Friday and 7 a.m. – 6 p.m. on Saturdays through early 2024.
 - Work outside these hours will be done as approved by the City of Mercer Island.
- There will be continual access through the East Channel during this work.
- Barges and small boats carrying equipment and crews. Divers will help place the new pipe.
- Environmental protections around the work area to protect surrounding waterways.
- Lights and other navigation aids such as buoys.



Environmental protections and construction barge in East Channel in August 2023.

Boaters should be aware of navigational aids and use extreme caution while moving through the work area.

Water Quality Monitoring:

The construction technique crews use involves backfilling the trenches where pipe is installed. The backfill is very fine. Depositing can stir up temporary turbidity when solid particles become suspended in water. This often results in water appearing cloudy or a different color. Our contractor takes frequent water samples to measure turbidity and ensure that we do not exceed water quality standards set by regulatory agencies.

NORTH MERCER ISLAND/ENATAI Sewer Upgrade Project

Talk to us! For more information or to schedule a meeting, please contact:

The community services team at **425-305-3578** or **NMEsewer@kingcounty.gov**

Visit the project Webpage at **www.kingcounty.gov/MercerEnataiSewer**



@KingCountyWTD



ALTERNATIVE FORMATS AVAILABLE
 206-477-5371 / 711 (TTY Relay)

The mission of King County Wastewater Treatment Division is to protect public health and the environment by collecting and cleaning wastewater while recovering valuable resources for a thriving Puget Sound region.