



**King County**

Department of Natural Resources and Parks  
Wastewater Treatment Division

## NORTH MERCER ISLAND/ENATAI Sewer Upgrade Project

June 8, 2023

### Utility location around Enatai Beach Park as early as June 5

**The park will remain open. Expect increased noise, vibration, and equipment at the park.**

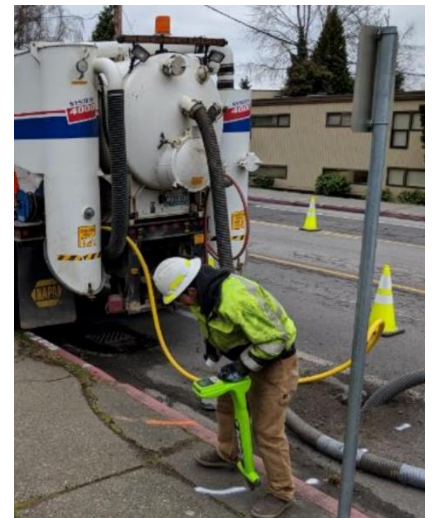
Starting as early as this week, crews will locate utilities in Enatai Beach Park to prepare for construction activities later this summer. Utility location will take place in public areas of Enatai Beach Park near the waterfront on Monday through Wednesday, during the weeks of June 5 and June 12. Flaggers will be onsite helping visitors access the waterfront.

Utility location helps crews avoid service disruptions during construction work. To locate utilities, crews use a jackhammer to break-up pavement. Next, they use a vacuum excavation truck to remove dirt and locate buried utilities. After documenting utility locations, crews will restore the roadway.

#### What to expect while crews are locating utilities:

- Permitted hours are 7 a.m. to 7 p.m. Monday to Friday and 9 a.m. to 6 p.m. on Saturday.
  - Please note, construction schedules often change due to weather, staffing, and other unforeseen things.
- Flaggers will direct park visitors around the work site, as necessary.
- Expect intermittent loud noise during jackhammering and saw cutting.
- Expect increased continuous noise while the vacuum truck is in use.

***For your safety, and the safety of our crews, please listen to flaggers and follow signs near active work areas.***



*Typical equipment used for utility location*

**NORTH MERCER ISLAND/ENATAI**

**Sewer Upgrade Project**

**Talk to us!** For more information or to schedule a virtual meeting, please contact:

The community services team at **425-305-3578** or **NMEsewer@kingcounty.gov**

Visit the project web page at [www.kingcounty.gov/MercerEnataiSewer](http://www.kingcounty.gov/MercerEnataiSewer)

ALTERNATE FORMATS AVAILABLE

206-477-5371 OR TTY REPLY: 711