



**King County**

Department of Natural Resources and Parks  
Wastewater Treatment Division

# NORTH MERCER ISLAND/ENATAI Sewer Upgrade Project

December 2023

## Pipe installation scheduled to start Southeast 35th Place mid-December Expect phased detours throughout this work

### Phased detours beginning on S.E. 35th PI:

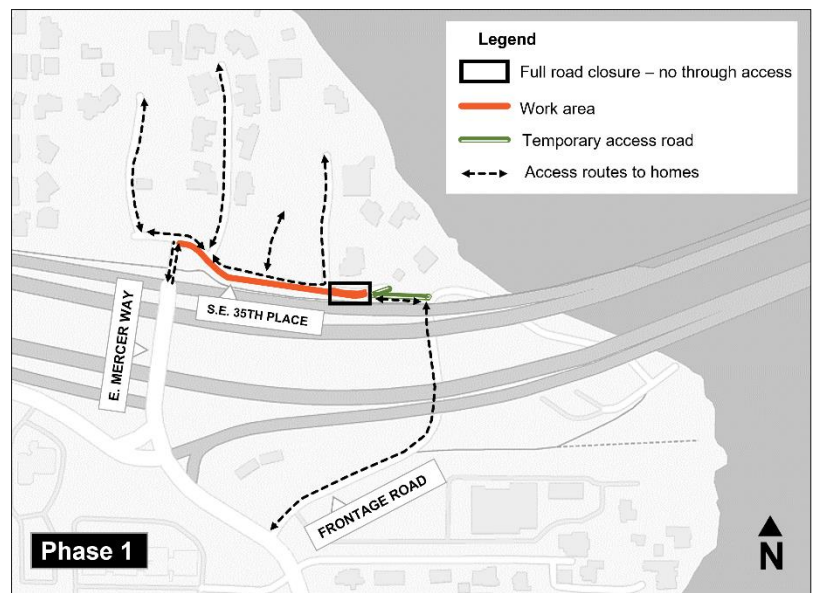
King County's contractor is installing a new sewer pipe across north Mercer Island. As early as December 11, crews will begin installing pipe from Frontage Road towards S.E. 35th PI. Work will progress west up S.E. 35th PI towards East Mercer Way in four phases. During each phase, crews will close a segment of S.E. 35th PI to complete pipe installation. Throughout the work, there will be one lane alternating traffic during working hours. After working hours, the road will be plated to allow two lanes of traffic.

To maintain resident access to homes on S.E. 35th PI, El Dorado Beach Club Drive, and Briarwood Lane during pipe installation, a temporary access road is being constructed between S.E. 35th PI and Frontage Road. Please travel slowly and follow all instructions from flaggers, posted signs, and traffic control signals.

The four phased detours routes are explained in more detail below. We expect Phase 1 to begin as early as late December. We expect Phase 1 to take 2-3 weeks. Overall this work is expected to continue into March 2024. If you would like us to email you about these phased detour routes, please email [NMESewer@kingcounty.gov](mailto:NMESewer@kingcounty.gov).

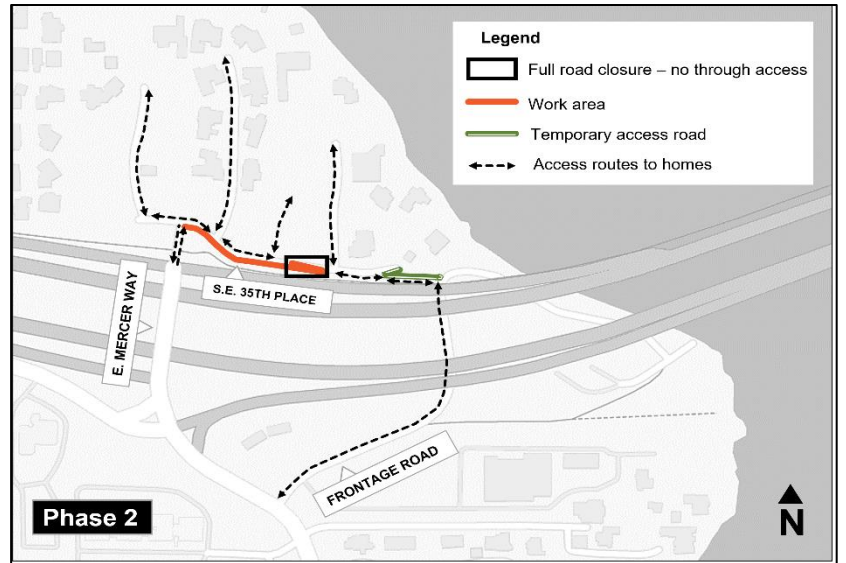
### Phase 1: S.E. 35th PI closed east of Briarwood Lane

- If you live at 9950 or 9960 S.E. 35th PI, you will access your home via the temporary access road connecting S.E. 35th PI with Frontage Road.
- If you live on or west of Briarwood Ln, you will continue to access your home from E. Mercer Way and S.E. 35th PI.
- There will be no access on S.E. 35th PI east of Briarwood Ln.
- Flaggers will direct traffic.



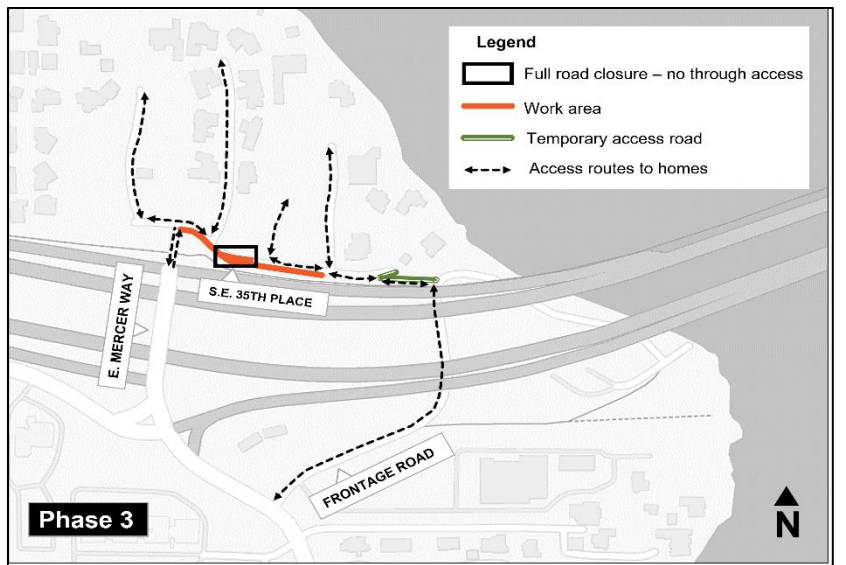
## Phase 2: S.E. 35th PI closed west of Briarwood Ln

- If you live on or east of Briarwood Ln, you will access your home via the temporary access road connect S.E. 35th PI with Frontage Rd.
- If you live west of Briarwood Ln, you will continue to access your home from E. Mercer Way and S.E. 35th PI.
- There will be no access on S.E. 35th PI at and east of Briarwood Ln.
- Flaggers and traffic control signals will direct traffic.



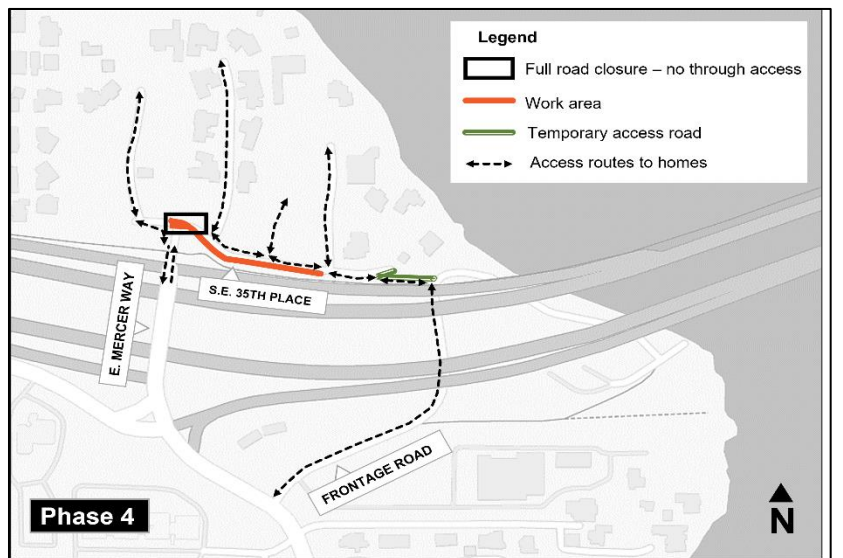
## Phase 3: S.E. 35th PI closed east of El Dorado Beach Club Drive

- If you live east of El Dorado Beach Club Dr, you will access your home via the temporary access road connect S.E. 35th PI with Frontage Rd.
- If you live on or west of El Dorado Beach Club Dr, you will continue to access your home from E. Mercer Way and S.E. 35th PI.
- There will be no access on S.E. 35th PI east of El Dorado Beach Club Dr.
- Flaggers and traffic control signals will direct traffic.



## Phase 4: S.E. 35th PI closed west of El Dorado Beach Club Drive

- If you live on or east of El Dorado Beach Club Dr, you will access your home via the temporary access road connect S.E. 35th PI with Frontage Rd.
- If you live west of El Dorado Beach Club Dr, you will continue to access your home from E. Mercer Way and S.E. 35th PI.
- There will be no access on S.E. 35th PI at and east of El Dorado Beach Club Dr.
- Flaggers and traffic control signals will direct traffic.
- There will be a police officer at the entrance to S.E. 35th PI and E. Mercer Way during permitted work hours.



### What to expect during construction:

- Typical work hours are 7 a.m. to 7 p.m. Monday to Friday and 9 a.m. to 6 p.m. on Saturday.
  - Work outside these hours will be done as approved by the City of Mercer Island.
- All work will be performed in the public right-of-way.
- Flaggers, traffic control signals, and single-lane alternating traffic during work hours.
- Increased traffic near the Mercer Island Boat Launch.
  - Access to the boat launch and parking area will be maintained. Please travel slowly and follow all instructions from flaggers, posted signs, and traffic control signals.
- Noise, dust, and vibrations typical of an active construction project.
- Emergency vehicle access will be maintained.
- Garbage, recycling, composting, and mail service will be maintained.
  - If services are interrupted, please call the project hotline at 425-305-3587.

### Do you live on S.E. 35th PI, El Dorado Beach Club Drive, or Briarwood Lane? JOIN US IN PERSON ON THURSDAY, DECEMBER 7 AT 4PM!

Project staff and the contractor will meet at the **intersection of S.E. 35th PI and E. Mercer Way starting at 4:00pm on December 7**. During the meeting, we will share information about what to expect during upcoming construction activities.

We will meet rain or shine, so please dress for the weather and wear sturdy shoes for walking.

To discuss how we can welcome you to this conversation or how to get information if you cannot attend, please contact the community relations team. Call or text 425-305-3578 or email [NMEsewer@kingcounty.gov](mailto:NMEsewer@kingcounty.gov).

## NORTH MERCER ISLAND/ENATAI

## Sewer Upgrade Project

**Talk to us!** For more information or to schedule a meeting, please contact:

The community services team at **425-305-3578** or [NMEsewer@kingcounty.gov](mailto:NMEsewer@kingcounty.gov)

Visit the project Webpage at [www.kingcounty.gov/MercerEnataiSewer](http://www.kingcounty.gov/MercerEnataiSewer)



@KingCountyWTD



ALTERNATIVE FORMATS AVAILABLE  
206-477-5371 / 711 (TTY Relay)