

North Mercer Island and Enatai Sewer Upgrade Project

Online Open House

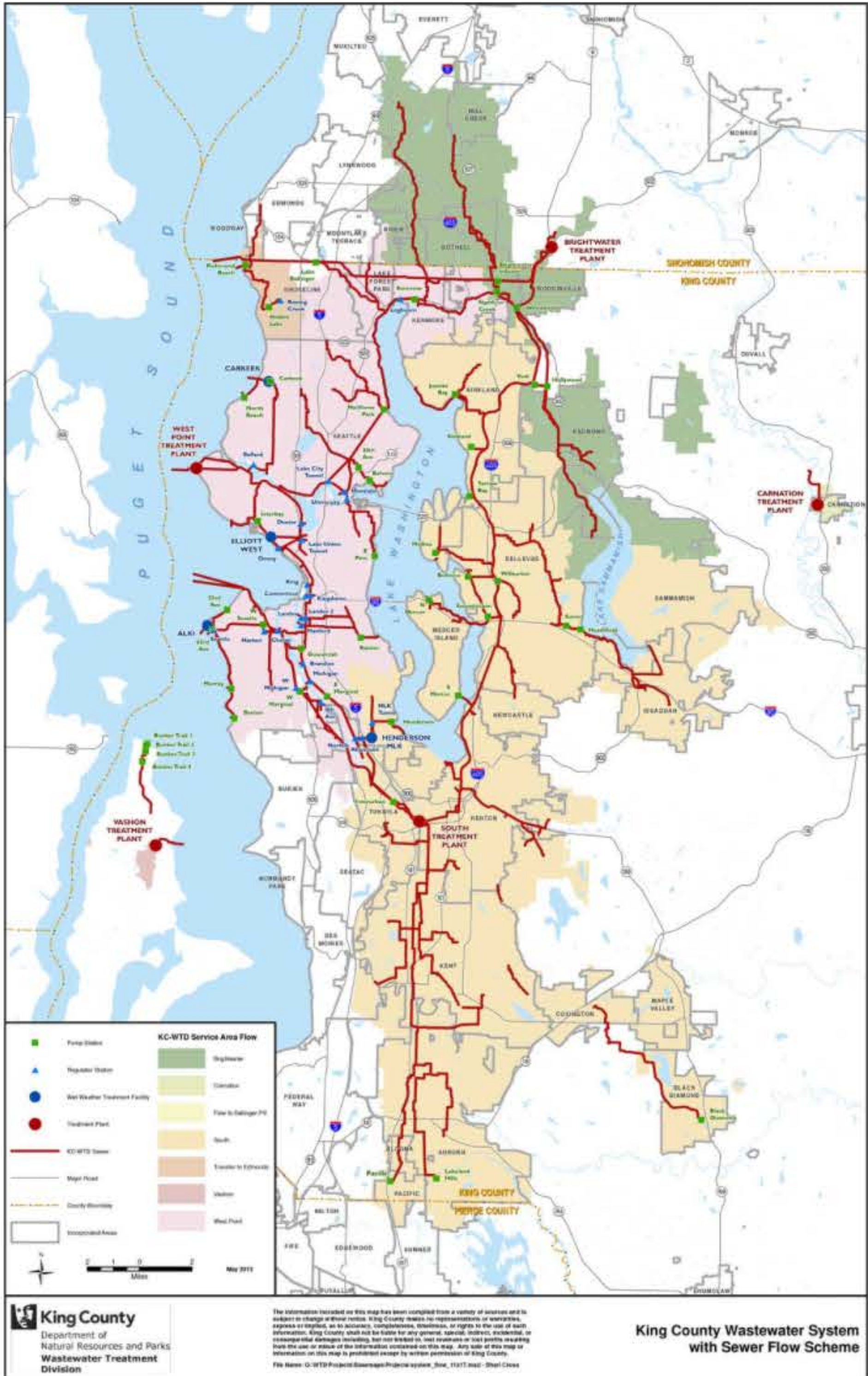
Welcome

Welcome to the North Mercer Island and Enatai Sewer Upgrade Project online open house. We're happy you joined the conversation. Please use the navigation links to review the latest project materials. The comment form is available for you to share your thoughts with the project team. We look forward to hearing from you.



About King County Wastewater Treatment Division

King County's Wastewater Treatment Division serves about 1.7 million people within a 424-square-mile service area. WTD serves 17 cities and 17 sewer districts in most urban areas of King County and parts of Snohomish County and northeast Pierce County.



Regional map with treatment plant service areas and major pipes

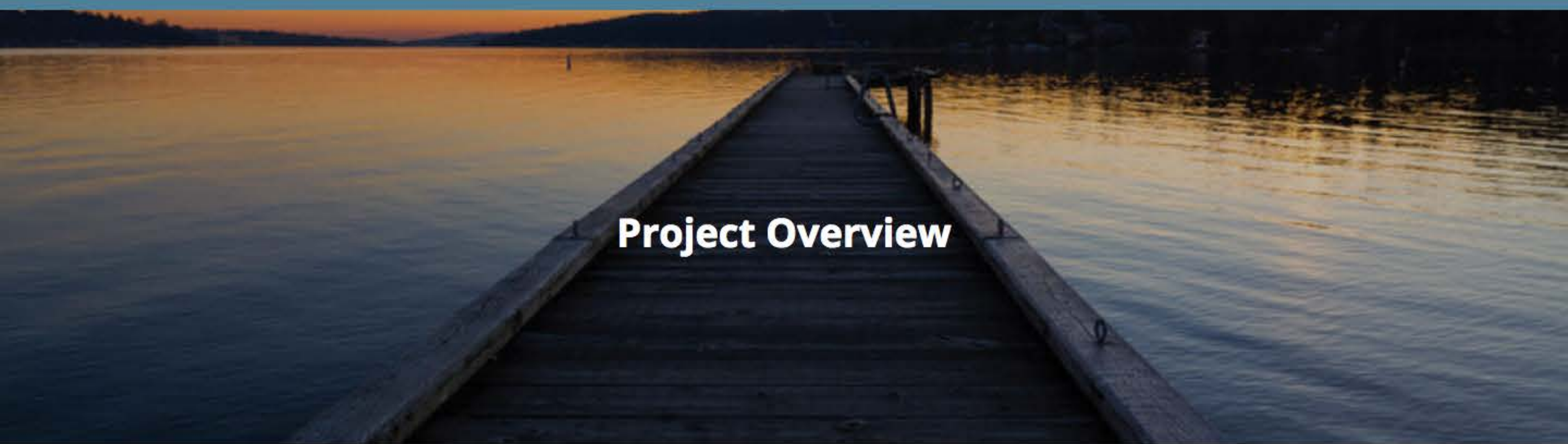
Explore the Project

[PROJECT OVERVIEW →](#)

Take notes as you go

Click the "Open Notes" button to start typing notes. You can transfer your notes to the comment form when you are done.

[OPEN NOTES](#)



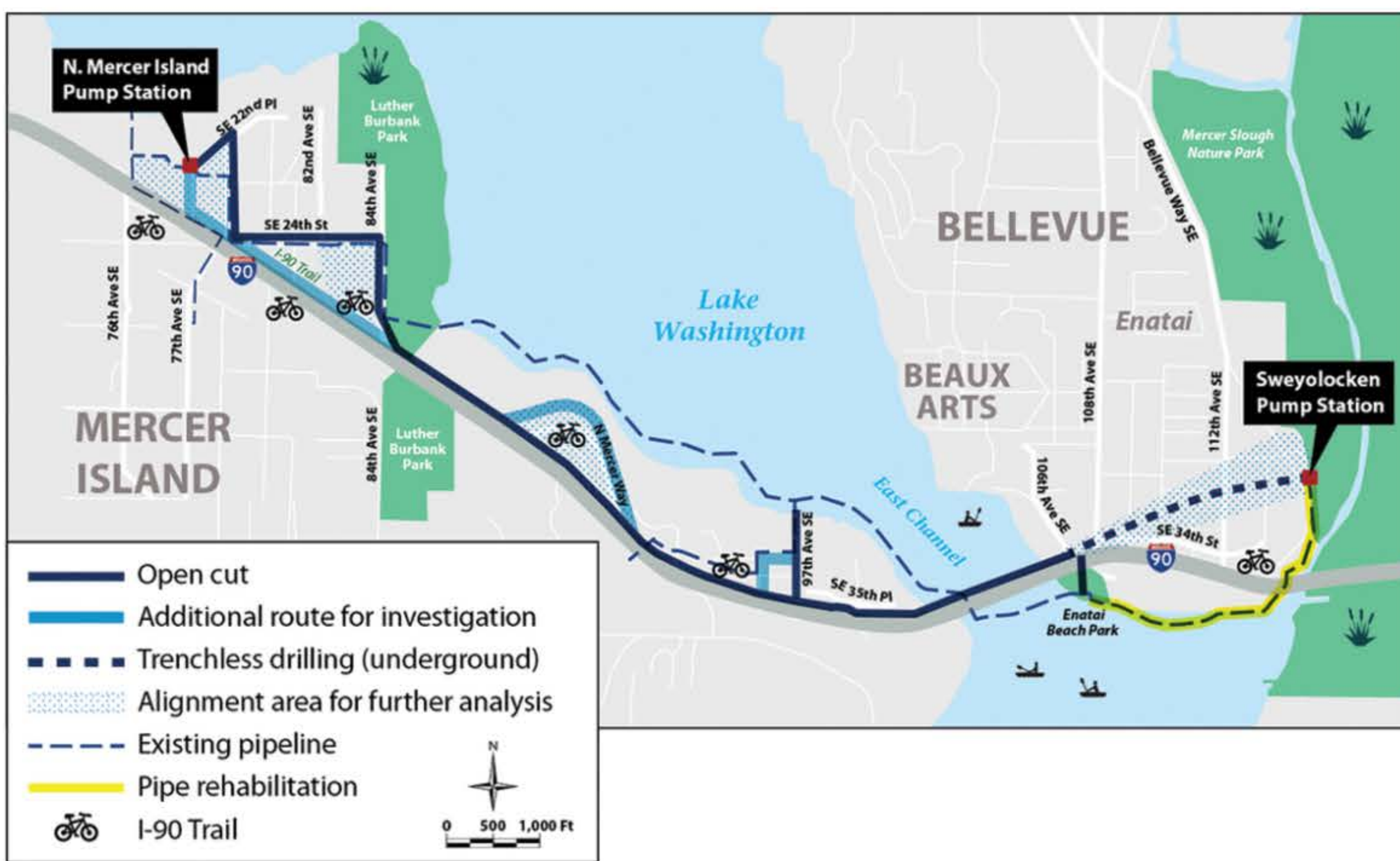
Project Overview

Supporting a healthy community and healthy environment

King County is upgrading the sewer pipes that serve north Mercer Island, southwest Bellevue near Enatai Beach, and the Town of Beaux Arts. These pipes were installed in the 1970s. To maintain an efficient, reliable sewer system, King County needs to replace and upgrade the pipeline that runs between the North Mercer Pump Station on Mercer Island and the Sweyolocken Pump Station in Bellevue. Pipeline upgrades will allow us to provide safe, reliable service for the next 50+ years.



In spring 2015, King County studied five alternative routes for the new pipeline. Earlier this year, the team made a recommendation to follow an upland route, keeping the pipe out of the water as much as possible to limit the impact to environmentally sensitive areas.



Several upland routes were considered

The project team spent most of 2016 gathering data, working with local government, and talking with the community to decide exactly where to place the new pipe.



Project Schedule

Explore the Project

[FINAL ALIGNMENT →](#)

Take notes as you go

Click the "Open Notes" button to start typing notes. You can transfer your notes to the comment form when you are done.

[OPEN NOTES](#)

Take notes here...



Final Alignment

Alignment Considerations

The pipeline route for the North Mercer Island and Enatai Sewer Upgrade project was carefully identified based on physical constraints and opportunities, conversations with local government and partner agencies, and community input.

Some of the key considerations used to identify the alignment included:

- Technical aspects
- Constructability
- Operation and maintenance
- Permitting requirements
- Environmental constraints
- Community input



Final alignment

- King County will upgrade and increase capacity at the North Mercer Pump Station for reliable service into the future.
- The wide gravel shoulder on 78th Ave SE provides an opportunity to install some portions of the pipeline out of the roadway. It also avoids utility conflicts on other streets.
- The new pipeline follows the existing pipeline along SE 24th St. and then heads down 81st Ave SE.
- While the alignment largely travels along the I-90 trail, there is an approximately 500 foot section that must be installed in North Mercer Way to avoid utility conflicts on other streets.
- A large section of the new sewer pipeline will follow the I-90 trail. Community members requested that the pipeline follow the trail as much as possible.
- Following 90th Place SE avoids major utility and structural conflicts and keeps wastewater flows moving efficiently.
- King County will upgrade the City of Mercer Island's Lift Station 11 at Fruitland Landing and re-direct flows upland to the new pipeline.
- Crossing the East Channel requires in-water work. Cities and community members asked the team to avoid major boating times such as Seafair.
- In Bellevue, the new pipeline will run underground starting at Enatai Beach Park and ending at the Sweyolocken Pump Station. An odor control unit will be installed under the bridge in Enatai Beach Park.
- This section of existing pipeline must be rehabilitated and remain in service to receive flows from the City of Bellevue, and to provide operational flexibility. Most of the work to rehabilitate the pipeline will be conducted from the water.



Explore the Project

[CONSTRUCTION METHODS →](#)

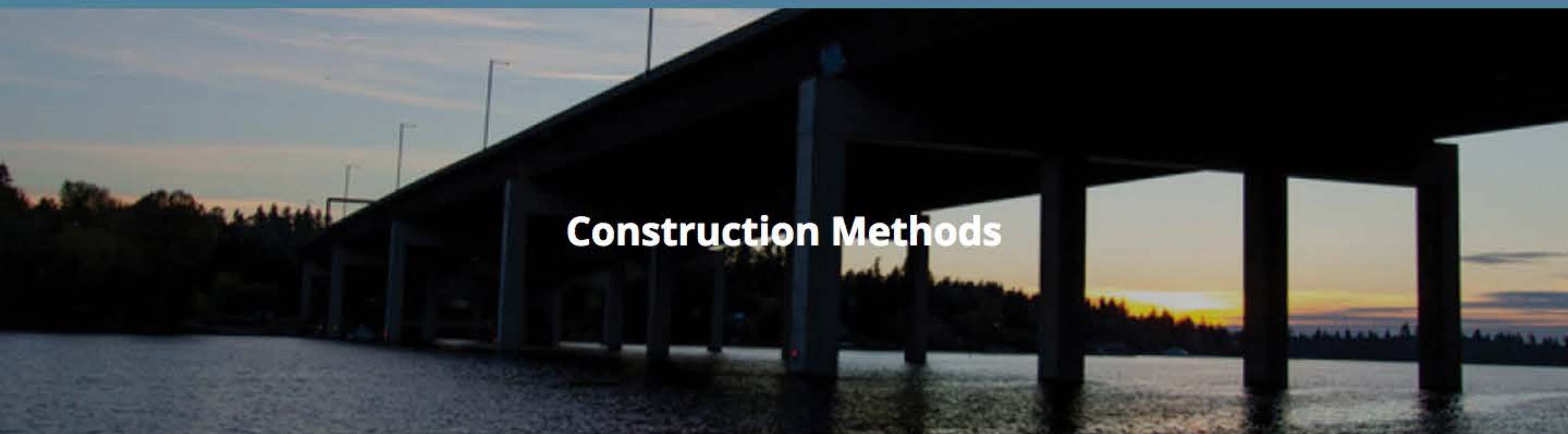
[← PROJECT OVERVIEW](#)

Take notes as you go

Click the "Open Notes" button to start typing notes. You can transfer your notes to the comment form when you are done.

[OPEN NOTES](#)

Take notes here.



Construction Methods

While the construction methods that will be used to install the new pipe are still being determined, the project team anticipates the pipe will be installed using two main methods, **open-cut** and **Horizontal Directional Drilling (HDD)**. On two specific sections of the pipeline, **in-water work** and **pipe rehabilitation** will occur.

Open-Cut Construction

Open-cut construction will be used to install the majority of the new pipe. This is the most common method for installing pipes and is safer for shallower work zones. There will be traffic impacts during open-cut installation, including lane closures and detours. Access to residences and businesses will be maintained.



Horizontal Directional Drilling

HDD is a construction method where drilling equipment on the surface is used to install pipe underground without the need for open trenches. HDD will be used to install the new pipeline under the Enatai hillside. Drilling equipment will be placed on either end of the pipe during installation.



In-Water Work

Crossing the East Channel requires in-water work. Cities and community members asked the team to avoid major boating times such as Seafair. Most of the in-water work will take place from barges. Measures will be taken during construction to protect water quality and aquatic life. These are examples of in-water work from the 2010 Mercer Island Sewer Lake Line Replacement Project.



Pipe Rehabilitation Work

A section of the existing North Mercer Island/Enatai Sewer pipeline must be rehabilitated and remain in service to receive flows from 25 homes and two City of Bellevue sewer lines. Work will be conducted in Enatai Beach Park, from the East Channel, and along the I-90 trail to the Sweyolocken Pump Station.



Explore the Project

[PUMP STATION UPGRADES →](#)

[← FINAL ALIGNMENT](#)

Take notes as you go

Click the "Open Notes" button to start typing notes. You can transfer your notes to the comment form when you are done.

[OPEN NOTES](#)

Take notes here.



Pump Station Upgrades

Pump Station Upgrades

To increase reliability of the system, King County will upgrade the existing North Mercer Pump Station. The existing pump station has been in use since about 1970. Where we can, we will reuse existing equipment. We'll also add an additional building to house a standby generator and some electrical equipment.



Pumps will be upgraded at the North Mercer Pump Station

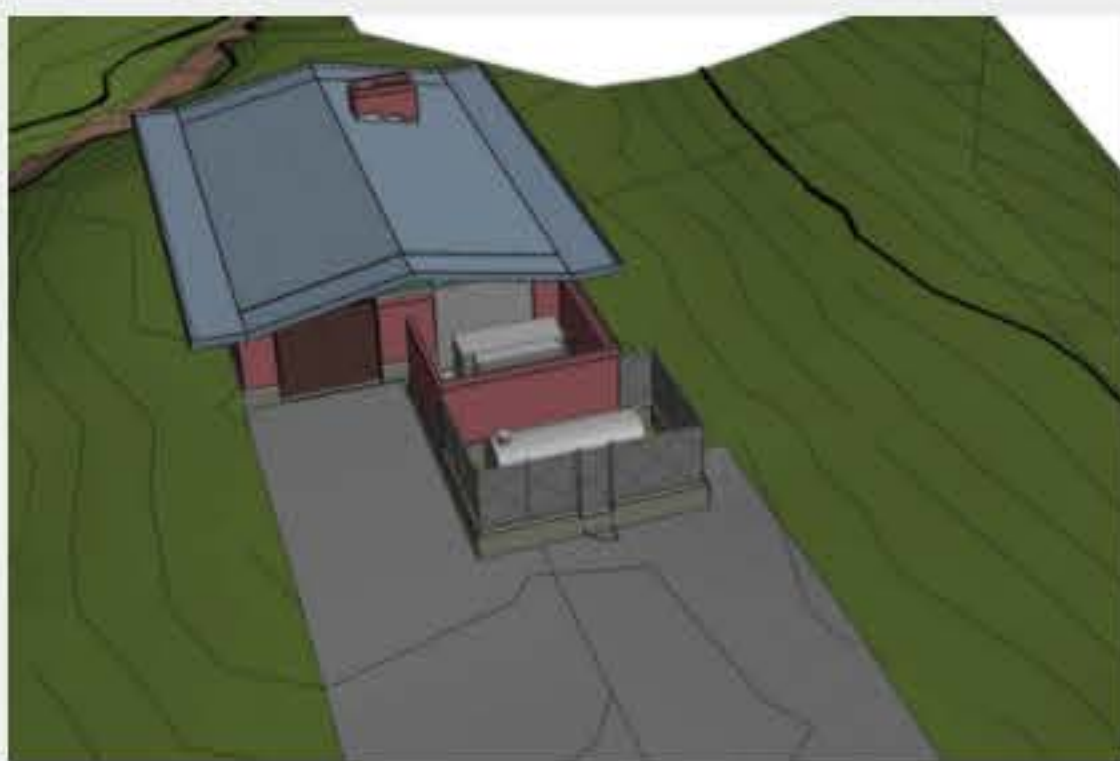


Existing North Mercer Pump Station, 7631 SE 22nd St, Mercer Island

Upgrades are planned at lift station 11, a City of Mercer Island facility used to direct flows from City pipes to the County's regional wastewater system.



Lift Station 11 at Fruitland Landing



Existing North Mercer Pump Station layout



Existing North Mercer Pump Station layout



Planned upgrades at North Mercer Pump Station



Planned upgrades at North Mercer Pump Station

Explore the Project

[COMMUNITY OUTREACH →](#)

[← CONSTRUCTION METHODS](#)

Take notes as you go

Click the "Open Notes" button to start typing notes. You can transfer your notes to the comment form when you are done.

[OPEN NOTES](#)

Take notes here.



Community Outreach

Outreach by the Numbers (to date)

4

Open Houses

14

Community Briefings

20

Field Work Notices

4

Community Events

100s

One-on-One Conversations



From our community outreach efforts we have heard:

- Use the bike path as much as possible
- Maintain boating access and stay out of the water as much as possible
- If possible avoid impacts to events such as Rotary Half Marathon and Seafair
- Reduce impacts to Enatai Beach and Luther Burbank Park
- Reduce North Mercer Way traffic impacts
- Coordinate with Sound Transit, WSDOT, and cities of Mercer Island and Bellevue

See how we are addressing some of this input on the [final alignment page](#).

Our commitment to you

King County is committed to keeping you informed of project progress and opportunities to help shape project design where possible.

Here is what you can expect as we continue to refine the design for the North Mercer Island/Enatai Sewer Upgrade Project:

- Outreach and coordination with individual property owners
- Community group briefings
- Street walk and talks
- Gather community input where we can

Explore the Project

[NEXT STEPS →](#)

[← PUMP STATION UPGRADES](#)

Take notes as you go

Click the "Open Notes" button to start typing notes. You can transfer your notes to the comment form when you are done.

[OPEN NOTES](#)

Take notes here.



Next Steps

What's Next?

Now that the alignment has been identified, the project team will continue to refine the design and work towards completing the preliminary design and environmental review process in 2017.

There will be additional opportunities for you to learn more and provide input as we work towards these major project milestones.



North Mercer and Enatai sewer project upgrade timeline

Explore the Project

- [WE WANT TO HEAR FROM YOU →](#)
- [← COMMUNITY OUTREACH](#)

Take notes as you go

Click the "Open Notes" button to start typing notes. You can transfer your notes to the comment form when you are done.

[OPEN NOTES](#)

Take notes here.



We Want To Hear From You

King County is committed to working closely with you throughout the life of the project. There will be opportunities for you to help shape the final design for the project. We'll be sure to reach out to you ahead of those opportunities. Please let us know if you have specific comments or requests. If you wish to become involved or provide feedback on the project, fill out the form below.

Contact Us

Name *

First

Last

Email *

Phone

Comment/Question *

SUBMIT

Our project team is available for meetings, briefings, and events. To request a meeting or to talk with the project team, contact Kristine Cramer at 206-477-5415 or kristine.cramer@kingcounty.gov

Sign up for email or text updates

To sign up by phone:

- text KING MERCERSEWER to 468-311 for Mercer Island updates
- text KING ENATAISEWER to 468-311 for Bellevue updates

To manage your preferences, enter your email or wireless number and select Confirm.

1. Subscription type

*

Email address

CONFIRM