



NORTH MERCER ISLAND/ENATAI Sewer Upgrade Project

Enatai Neighborhood Community Meeting

Wednesday, January 25, 2016

6-8 p.m.

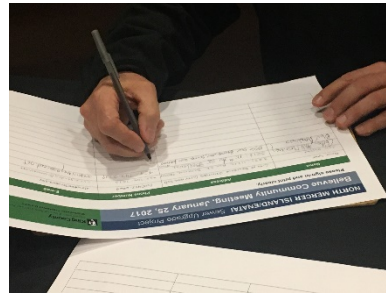
Mercer Slough Environmental Education Center

Attendance

15 attendees

Purpose of the meeting

King County presented the final pipeline alignment for the project at the meeting. The final alignment was first announced in a mailed newsletter, social media update, and email to listserv subscribers during the week of January 16.



Participants were able to sign up for the project email list when they arrived at the meeting.

The meeting provided an opportunity for project stakeholders to:

- Learn about the project need and wastewater service in the project area
- Understand the final alignment
- Ask questions about the project
- Provide feedback on the final alignment
- Hear how King County will work with neighbors throughout the project

Meeting Format

From 6 to 6:30 p.m., participants viewed 15 display boards and spoke with project staff.

The team gave a presentation and answered questions from 6:30 to 7:15.

Project staff were available for additional questions until 8 p.m.

Presentation

The presentation covered an overview of the Wastewater Treatment Division and the pipes that serve north Mercer Island and southwest Bellevue, the project purpose and need, timeline, alternatives considered earlier in design, detail of the final alignment, construction methods, pump station upgrades, community involvement, and next steps.

Welcome and introductions

Facilitator Lynsey Burgess opened the presentation and explained the agenda.



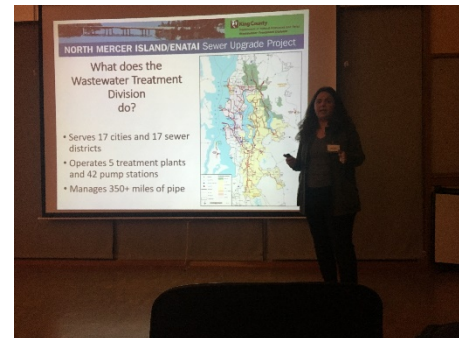
Enatai neighbors learn about easement needs during the option house portion of the meeting.



NORTH MERCER ISLAND/ENATAI Sewer Upgrade Project

Project overview

Project Manager Sibel Yildiz explained that King County Wastewater Treatment Division serves 17 cities and 17 sewer districts with five treatment plans, 42 pump stations, and more than 350 miles of pipe. Over the past 50 years, treating the area's wastewater has transformed Lake Washington into one of the cleanest urban lakes in the world. This project is necessary to continue providing safe, reliable wastewater services to north Mercer Island and southwest Bellevue.



Project Manager Sibel Yildiz explains WTD's mission.

Sibel explained that the project is currently in preliminary design. This phase will wrap up in summer 2017 and the project will move into final design and environmental review.

Sibel reviewed alternatives considered early in design, including an in-water option that was ultimately not feasible because we cannot permit an in-water option when there is an upland option available. She also presented a map of the final alignment.



The project corridor under evaluation during early design (left) compared to the final alignment (right).

Community Relations lead Kristine Cramer explained that, to date, the community relations team has held four open houses, presented 14 community briefings, distributed 20 field work notices, staffed tables at four community events, and has had hundreds of conversations with project area neighbors and interested stakeholders. During that outreach, we heard priorities and concerns from the community, including:

- Use the I-90 Trail as much as possible and reduce impacts to North Mercer Way
- Avoid impacts to events such as the Rotary Half Marathon and Seafair to the extent possible
- Reduce impacts to Enatai Beach and Luther Burbank parks
- Maintain boating access
- Avoid in-water work as much as possible
- Coordinate with Sound Transit, the Washington State Department of Transportation, and the cities of Mercer Island and Bellevue



NORTH MERCER ISLAND/ENATAI Sewer Upgrade Project

Final alignment

Consultant team Project Design Manager James Chae reviewed factors the technical team considered in determining the final alignment, including:

- Technical
- Constructability
- Operation and maintenance
- Permitting
- Environmental
- Community

James detailed the final alignment in four sections.

For section one, the North Mercer Pump Station to the I-90 Trail, James explained that the wide gravel shoulder on 78th Avenue SE provides enough space for construction. There are too many utility conflicts on 84th Avenue SE for us to install the pipe there. Community feedback and the topography of Luther Burbank Park are two of the reasons we chose a route that avoids the park. These and other factors will require that we work on North Mercer Way for a 500-foot stretch.

In section two, along the I-90 Trail, 90th Place SE, and 97th Avenue SE, construction will primarily follow the I-90 Trail. The pipe will divert to 90th Place SE because the higher topography there will help keep flows moving efficiently and constructability issues on that section of I90 trail. A new forcemain will be constructed on 97th Avenue SE connecting the City of Mercer Island's lift station 11 to the new pipeline. Some upgrades will be necessary at lift station 11.

Section three is the East Channel crossing. In-water work is the only feasible option at that location.

Section four is Enatai Beach Park to the Sweyolocken Pump Station. We will install a pipe under the Enatai hillside using Horizontal Directional Drilling, or HDD, with work taking place at Enatai Beach Park and Sweyolocken Pump Station. There will be an odor control unit under the bridge at the park. We will also build a new connection and diversion structure to the existing Enatai Interceptor, and perform rehabilitation work on the existing Enatai Interceptor. The Enatai Interceptor is directly connected to a number of homes and two City of Bellevue sewer lines and must remain in service.

Construction methods

James gave an overview of planned construction methods for the project, including open-cut, in-water, trenchless (Horizontal Directional Drilling), and pipe rehabilitation.

Open-cut construction will be used to install the majority of the pipe. This method is very common and safe for shallow work zones. Crews will not be constructing the entire alignment at one time, but instead will use rolling work zones. Community members should expect traffic impacts including lane closures and detours. King County will work with residents and businesses to maintain access.

In-water work in the East Channel will primarily take place from barges. Crews will dredge a channel for the pipe, lay the pipe, and then backfill. Cities and community members have asked the team to avoid major boating times such as Seafair.



NORTH MERCER ISLAND/ENATAI Sewer Upgrade Project

In the Enatai neighborhood, the pipe will be installed deep underground, beyond where an open cut trench could reach. The team will use a trenchless construction method called Horizontal Directional Drilling, or HDD. In HDD, a drill is set up at one end of the alignment – in this case, Enatai Beach Park, and a small pilot hole is drilled to the end of the alignment – in this case, Sweyolocken Pump Station. That pilot hole is then gradually enlarged to accommodate the pipe, and the pipe is pulled through. We will use a series of barges and cranes to install the pipe during the relatively short pipe pullback period.

Pipe rehabilitation work is necessary to maintain service to the existing Enatai Interceptor. Most of this work will be conducted from the water because a portion of the line is in the water.

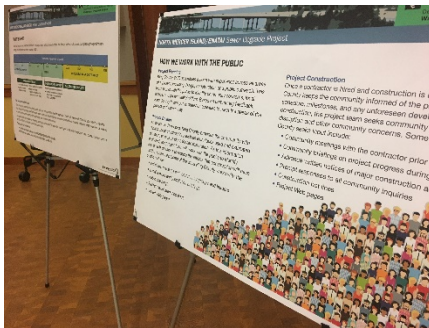
Pump station upgrades

James explained that the North Mercer Pump Station was built in the 1970s and upgrades are needed to increase reliability. Some equipment is able to be reused. An additional building will be added to house a new generator and electrical equipment.

Upgrades are also planned at lift station 11, a City of Mercer Island facility that is used to direct flows from City pipes to the County’s regional wastewater system.

Next steps

Kristine Cramer returned to explain next steps. Kristine explained that the team will continue design work during 2017, including confirming easement needs, refining construction methods, and starting to identify construction sequencing, or the order in which we will build the project.



Display boards provided information on how King County works with project neighbors.

During fall 2017, the project will go through environmental review under the State Environmental Policy Act (SEPA). There is an official public comment period associated with that review. King County will let the community know about the comment period through written and emailed notifications.

Kristine emphasized that King County Community Relations is committed to working with the community. The team is available for individual coordination, community group briefings, street walk and talks, and other communication methods.

For more information, Kristine can be reached at kristine.cramer@kingcounty.gov or 206-477-5415.

Summary of Questions

The following section summarizes general questions, comments, and discussion from the community meeting. This summary does not document site-specific issues, which King County will address with individual homeowners in one-on-one and small group meetings.

Questions and comments focused on the following topics:

- General project overview and background
- Horizontal Directional Drilling



NORTH MERCER ISLAND/ENATAI Sewer Upgrade Project

- Pipe rehabilitation
- Traffic and road closures
- Coordination with other agencies
- Next steps

General project overview and background

Can you explain the various project components on the Enatai side, represented by solid, dashed, and highlighted lines on the map?

Working from Enatai Beach Park, we will construct a new pipe under the Enatai hillside using Horizontal Directional Drilling (represented by the dashed line); a new diversion structure that will connect the new pipe to the existing Enatai Interceptor that runs along the southwest Bellevue shoreline (represented by the solid line); and rehabilitate the existing Enatai Interceptor between Enatai Beach Park and the Sweyolocken Pump Station (represented by the highlighted line). We will also install odor control in Enatai Beach Park.

Did you consider other routes for the pipe on the Enatai side?

During alternatives analysis, the team studied a range of options for the pipeline alignment. One option we considered was installing a pipe parallel to the existing Enatai Interceptor; that option is not feasible because an in-water pipe will not be permitted if there is a feasible upland option. We also considered a pipe running parallel to I-90, but that design could not accommodate the design constraints of the HDD tunneling method.

Horizontal Directional Drilling

How many easements are needed for the Horizontal Directional Drilling (HDD) work?

On the Bellevue side of the alignment, we are pursuing about 22 permanent easements for the HDD pipe alignment. There are also several temporary easements needed related to work in Enatai Beach Park and on the pipe rehabilitation work.

How will you coordinate with the homes over the pipe?

King County will work closely with homeowners above the pipe, as with all residents in the area. You can expect written and emailed notification of construction activities, and we are available for one-on-one meetings or briefings for groups.

What can residents with homes above the pipe expect for construction impacts? Homeowners would like notice before drilling begins.

We expect very little disturbance during HDD construction. The drilling is very deep and will proceed fairly slowly, so residents are unlikely to feel or hear vibration, although it is possible. We do not expect vibration at a level that would cause any damage to home.

Once construction begins, we will maintain a 24-hour construction hotline, so you can reach our team at any time.

We strive to provide two weeks advanced notice of major construction activities. We will notify homeowners of construction via mail, fliers left at front doors, and updates on our website.



NORTH MERCER ISLAND/ENATAI Sewer Upgrade Project

Will HDD drilling be similar to drilling for the soil samples during summer 2016?

During summer of 2016, crews completed a series of soil samples along the project alignment. Those samples were obtained by drilling from the surface to get soil samples. During HDD work, the drill moves horizontally underground.

Additionally, HDD drilling will be very deep below homes – up to 130 feet – so it is unlikely that you would feel vibration from that work.

What happens if the drill runs into hard rock?

The HDD drill can be pulled back out and the tools on the front of the drill changed at any time during the process. We do a thorough investigation ahead of time to prepare for all soil types and we will have a variety of tools at hand.

Pipe rehabilitation

When will rehabilitation work for the existing pipe take place?

Pipe rehabilitation work will take place after the new line is installed. We need the new line to be in service so that we can divert flows to it while we work on the existing line.

How long will rehabilitation take?

We don't have construction schedules yet. We will start looking at that during this summer.

Traffic and road closures

How long will roads be closed?

We don't have a construction schedule yet. The overall project will take three years to construct, but that does not mean we will be working in any one location for three years. Most locations will have much shorter construction windows.

Will there be trucks to remove material from the HDD pipe?

Yes, we will use trucks to remove excavated material from the HDD pipe. Trucks will leave from Enatai Beach Park and Swaylocken Pump Station. We will permit our haul route through the City of Bellevue and provide more detailed information about the haul route and volume of trucks prior to construction.

Residents in Enatai are concerned about traffic from trucks on this project compounded with traffic and road closures from Sound Transit's East Link Extension. How will that be addressed?

Road closures for this project will be permitted through the City of Bellevue. Doug Lane with the City of Bellevue explained that the City will compare requests for road closures to ensure that conflicting closures, closures that box in residents, or haul routes that conflict with closures or cause excessive traffic are not permitted for the same time. King County will also coordinate with Sound Transit to avoid conflicts.

Coordination with other agencies

How will your timeline overlap with Sound Transit's?

Sound Transit's construction will be ahead of construction for the North Mercer Island and Enatai Sewer Upgrade Project. Sound Transit is scheduled to begin construction in 2017; our project is scheduled for construction in 2020.



NORTH MERCER ISLAND/ENATAI Sewer Upgrade Project

King County is working with Sound Transit and the City of Bellevue to coordinate and identify any potential overlaps in work area and ensure residents are able to travel through the neighborhood.

Will you be sharing staging areas with Sound Transit, particularly in Enatai Beach Park?

Sound Transit's work in Enatai Beach Park is scheduled to take place before this project begins work there.

Will the project encounter any fault lines?

The project area does run through the Seattle fault zone; we call the Seattle fault a zone rather than a line because it consists of multiple fault splays. We don't have exact locations for all the fault splays, but we know the pipe will run parallel to a portion of these fault splays. It is generally preferable to construct parallel to a fault rather than cross it. Based on research, there has not been movement along the Seattle fault for approximately 1,100 years.

How are you coordinating with the City of Bellevue?

We are meeting with the City of Bellevue regularly as we continue project design. The City of Bellevue provides permits for construction activities in the public right-of-way as well as haul routes.

Next steps

When will the final schedule be available?

We will begin sequencing the project – determining the order in which various portions of work will take place – during summer 2017, but we will not know an exact schedule until a contractor is hired. The contractor will be responsible for providing King County with a schedule so that we can provide you with advance notice of construction activities.

How will the public be notified and input collected for the project SEPA review?

We will likely do a mailing as well as send out an email to the project listserv. There is a minimum two-week comment period for official feedback on the project SEPA documents.

Other feedback

Several community members expressed that they appreciate the County's communication and transparency, and understand that the project will be a benefit to the community long term.

A number of attendees thanked the team for the meeting and noted that staff effectively answered their questions and addressed their concerns.