

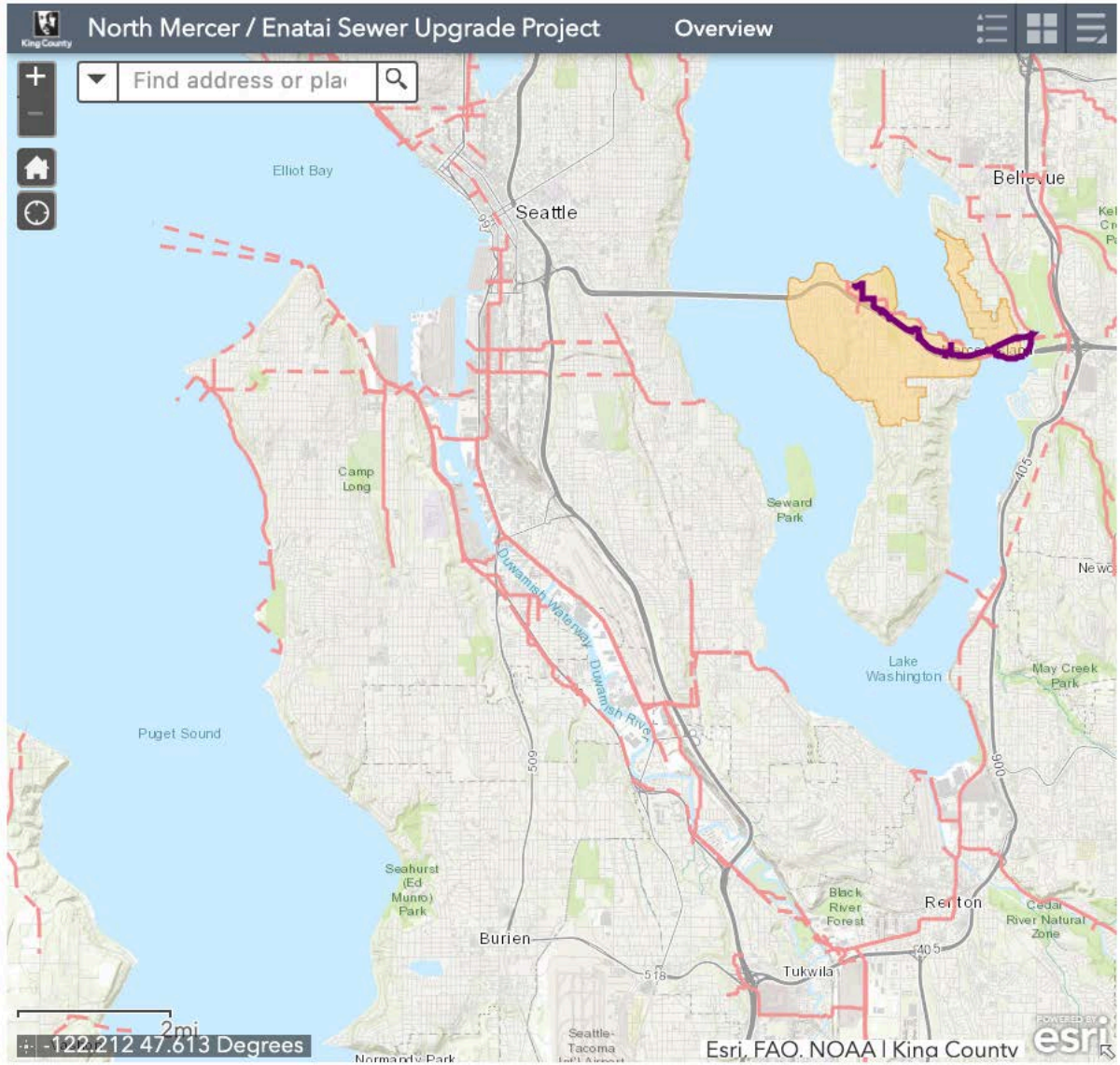
North Mercer/Enatai Sewer Upgrade Project

Online open house live until April 15, 2020




King County is upgrading three miles of sewer pipeline from the North Mercer Pump Station on Mercer Island to the Swayolocken Pump Station in Bellevue. In addition to the new sewer pipeline, King County will upgrade the County's North Mercer Pump Station, as well as the City of Mercer Island's Lift Station 11 at Fruitland Landing.

Construction is expected to begin in 2021 and be complete in 2024. When complete the new pipe and upgraded pump station will provide safe, reliable service for 50 years or more. We are committed to keeping you informed along the way so you know what to expect before and during construction.

Project area map



LEGEND

-  Future pipeline route
-  Existing King County sewer line
-  North Mercer Island / Enatai sewer service area

Use the plus and minus buttons in the upper left corner of the map to zoom in or out.

Project design phase wrapping up

King County continues to make progress on the design for the North Mercer/Enatai Sewer Upgrade Project. We've been working closely with local jurisdictions, including the City of Mercer Island and City of Bellevue, and partner agencies to get feedback on the final design. We've also been working closely with you to better understand your priorities and keep you informed of project updates.

Over the past year, we have:

- Completed the State Environmental Policy Act (SEPA) review process
- Made draft plans for how we'll replace trails, repave streets and sidewalks, and replant trees and shrubs after construction
- Made preliminary plans for managing traffic along the I-90 Trail, North Mercer Way and other local streets when construction starts
- Began acquiring permits from the City of Mercer Island, City of Bellevue, and state and federal agencies
- Continued conversations with you to share the latest project information and incorporate your feedback in our design wherever possible

Please use the tabs in the menu above or continue below to learn more about this year's progress and what to expect before and during construction. We also invite you to provide feedback on our project communications and reach out to us with any questions or concerns.

North Mercer Pump Stations Gets an Upgrade

The North Mercer Pump Station keeps flows moving east towards Bellevue and ultimately to King County's treatment plant in Renton. Upgrading the [North Mercer Pump Station](#) will ensure the pump station is compatible with the new pipeline, address the condition of aging equipment, and allow the system to handle the expected increase in flows through 2060.



Future pump station from S.E. 22nd Street.

The upgraded pump station site will have new landscaping and a new generator building to the west of the existing pump station building.

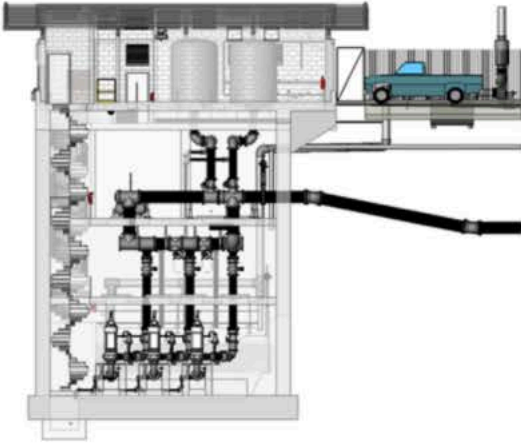


The western boundary of the pump station site includes soil enrichment and vegetation to screen the site from neighbors. Rendering depicts growth from day one of installation.

New upgrades

The pump station is like an iceberg – most of it is below ground! Upgrades in the pump station include new pumps, a new [odor control system](#), wet well modifications, HVAC modifications, piping replacement, pipeline protection systems and new electrical and control systems.

A new generator building to the west of the existing pump station will include a standby generator and upgraded electrical equipment. The generator will ensure the pump station stays operational even during a power outage. The generator will have sound buffering systems to minimize noise.



The pump station has three levels below ground.



Due to the stream on the east side of the property, most of the construction must happen on the west side of the site. But the west side is hilly, so a retaining wall will be constructed southwest of the pump station building to stabilize the site and allow a landscaped buffer to be planted.

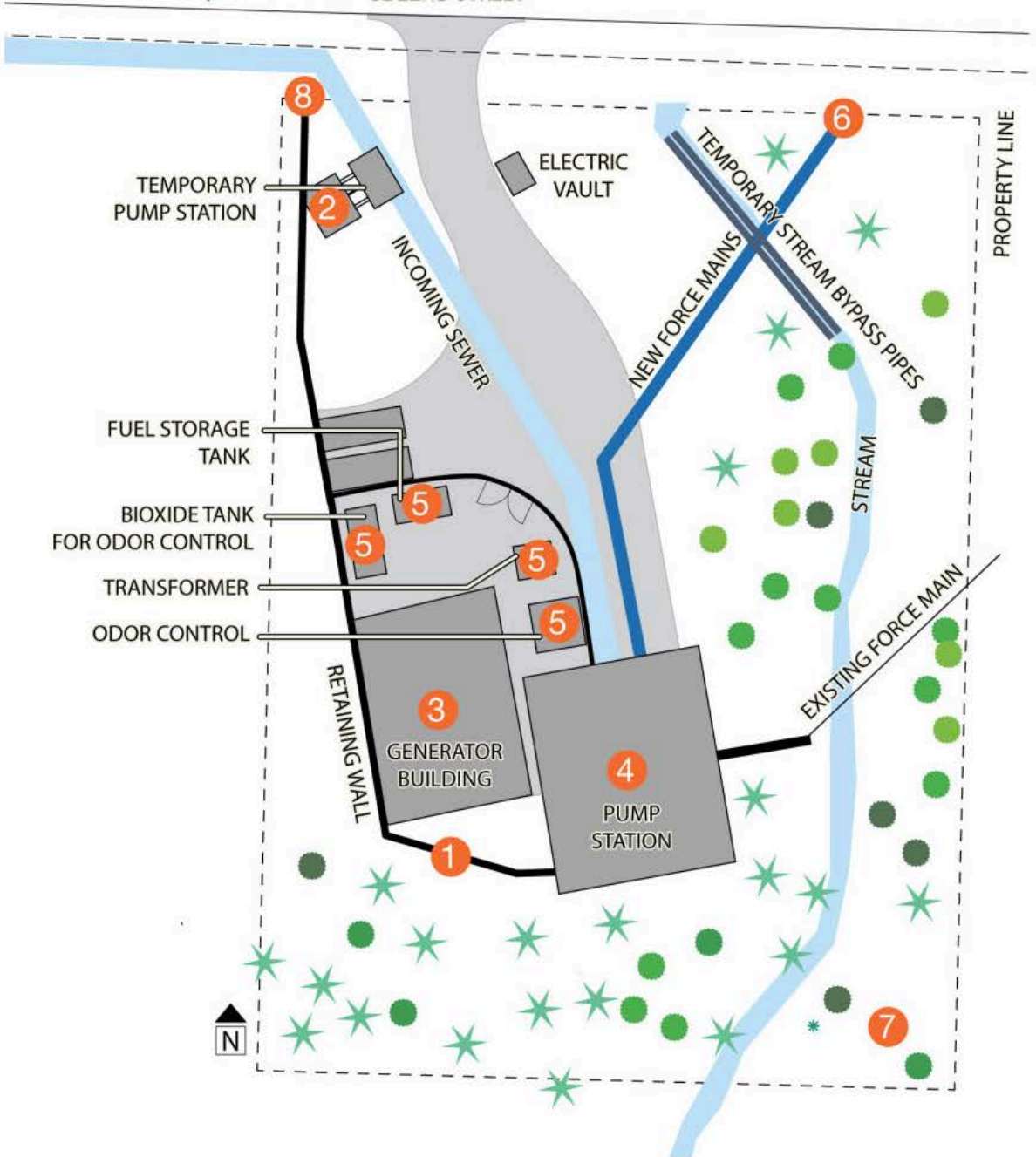
Construction will require the removal of some trees where new facilities are planned and where new pipelines leave the site. After construction is complete, King County will remove invasive plants such as knotweed and ivy, and plant new trees and landscaping around the site. Most of the new landscaping will be native forest species.

North Mercer Pump Station construction will take up to three years



The work will generally follow this order:

1. Installing temporary retaining wall.
2. Build temporary pump station.
3. Construct new generator building.
4. Put the temporary pump station into operation, and upgrade the existing pump station.
5. Install new odor control facilities, a new transformer, and a fuel tank for the generator in the courtyard area.
6. Install new force mains for the pump station to carry pump sewage to the new North Mercer/Enatai Interceptor system.
7. Restore the site to provide screening and landscaping.



The temporary pump station at the northeast corner of the site will have several pieces of equipment.



Odor Control



Bioxide Tote



Temporary Wall



Standby Generator



Power & Controls Trailers

Open cut construction on residential streets

From the North Mercer Pump Station to the Mercer Island Boat Launch along the East Channel of Lake Washington, we'll be laying about two miles of new pipeline across the island. About half of the new pipe will be in public streets, and the rest of the pipe will on the I-90 Trail.

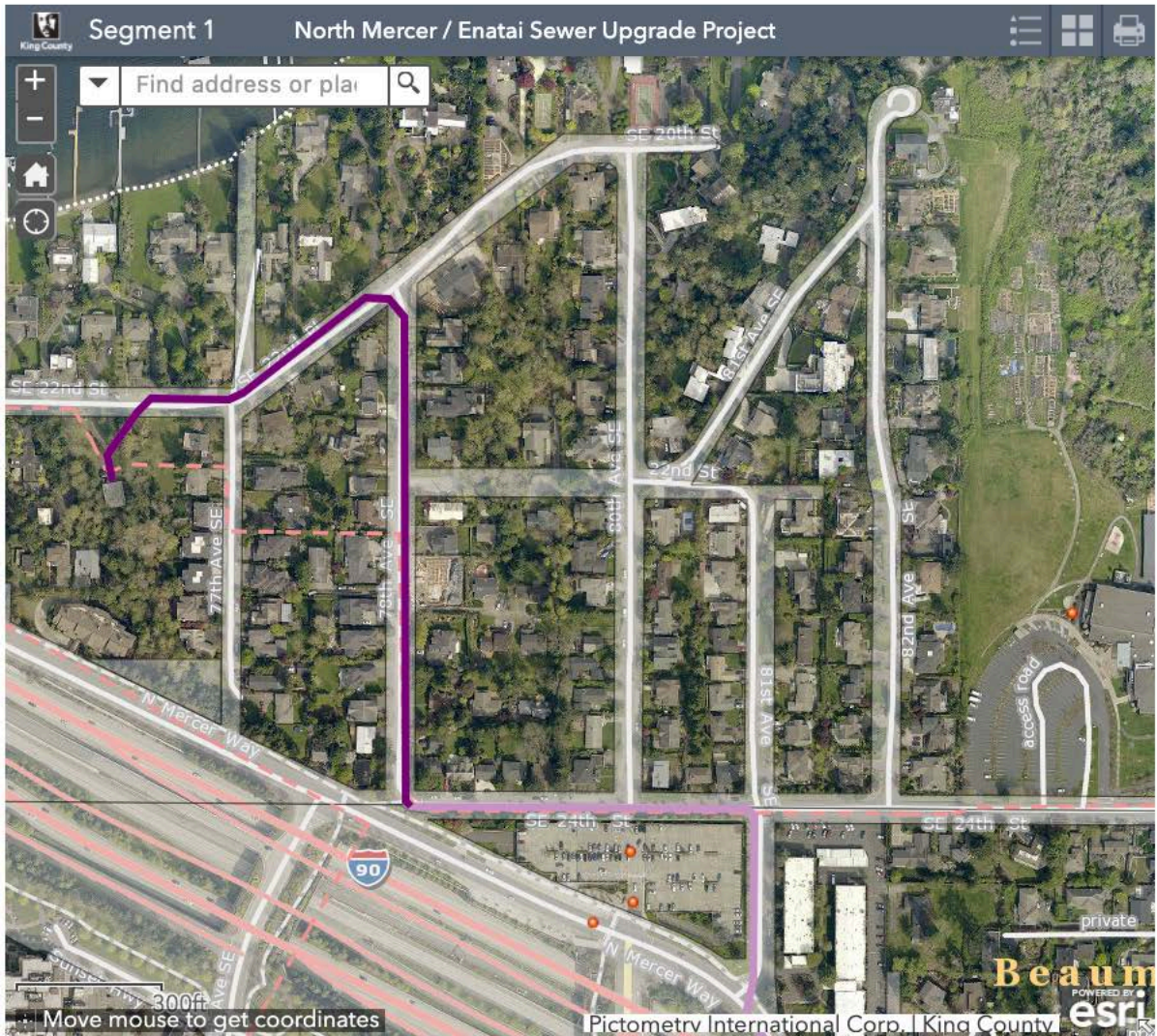
Crews will use [open-cut trenching](#) to lay the pipe along affected streets.

Open cut construction video



S.E. 22nd Way & 78th Avenue S.E.

From the North Mercer Pump Station, the pipe will follow along the north side of S.E. 22nd Way and the east side of 78th Avenue S.E. to S.E. 24th Street.



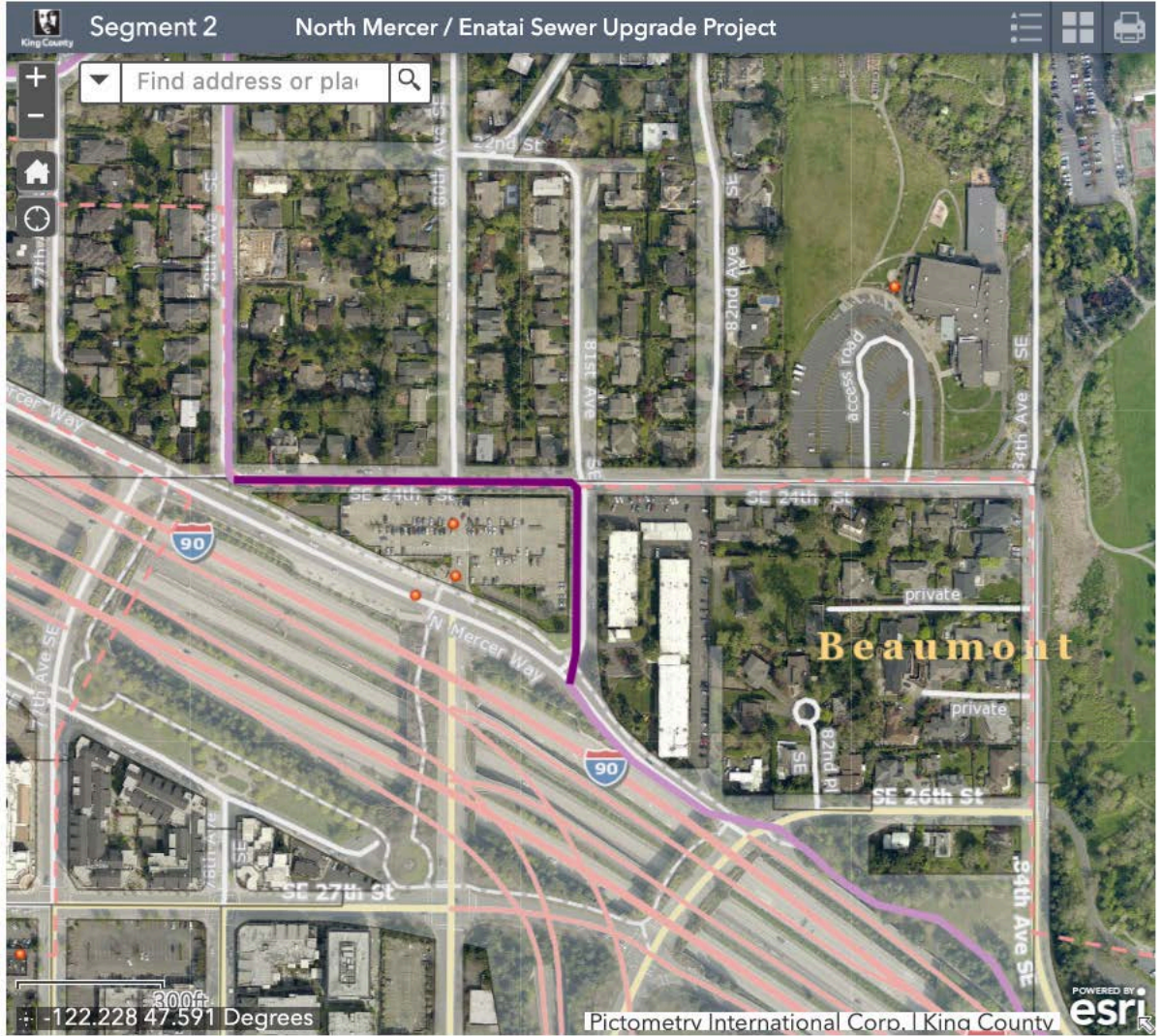
What to expect:

We know this work will be disruptive to those living nearby. We will have more information about what you can expect as we get closer to construction, but here is what we know so far:

- The pipe will be installed using an open trench from the street surface
- Planter strips on the east side of the road will be removed; these areas will be restored to City of Mercer Island standards following construction
- Lane closures, traffic delays, increased truck traffic, increased noise and vibration are expected
- Emergency access will be maintained at all times

S.E. 24th Street & 81st Avenue S.E.

From 78th Avenue S.E., the pipe will follow along the centerline of N.E. 24th Street and on the west side of 81st Avenue S.E., toward North Mercer Way.



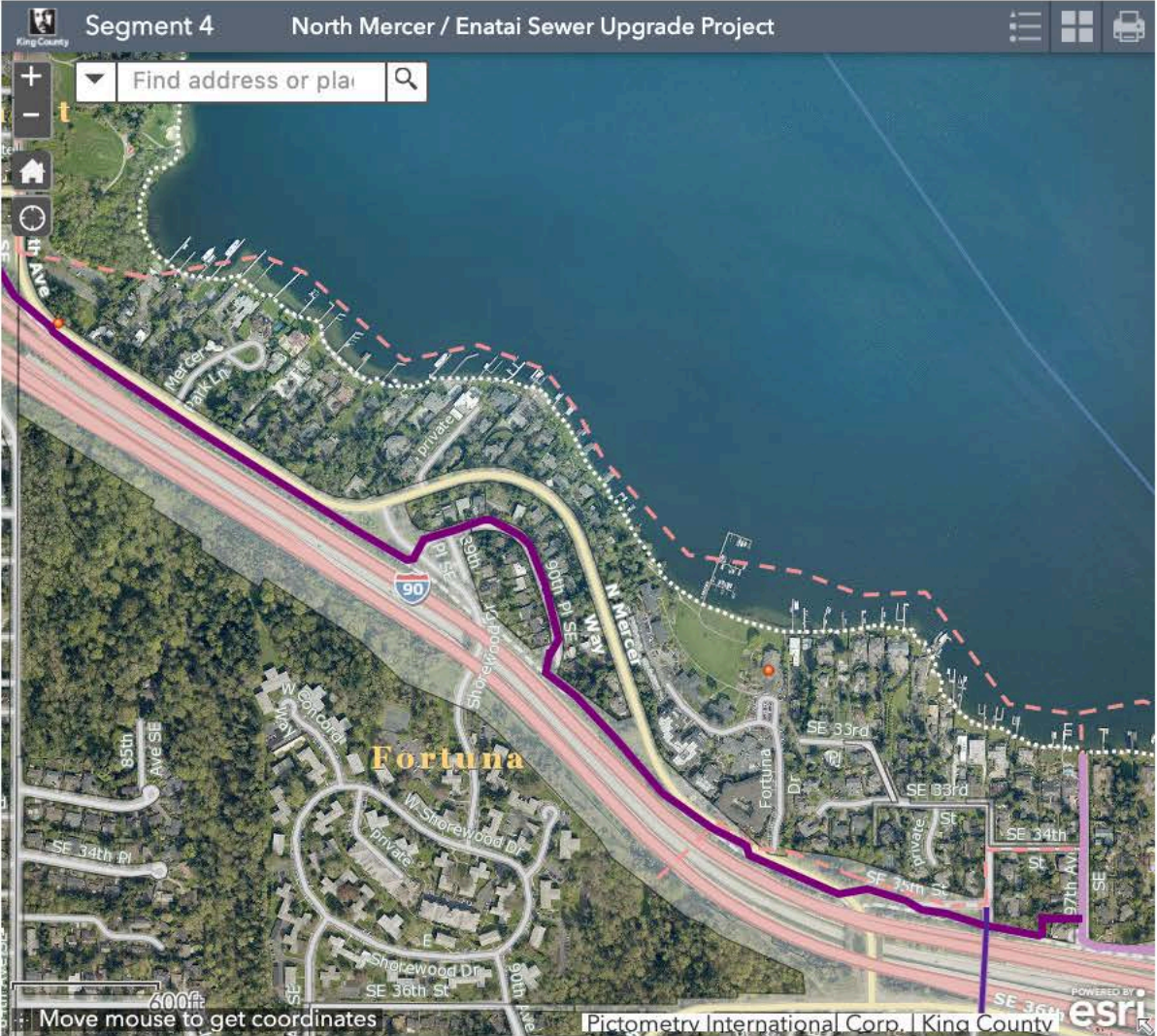
What to expect:

We know this work will be disruptive to those living nearby. We will have more information about what you can expect as we get closer to construction, but here is what we know so far:

- The pipe will be installed using an open trench from the street surface
- Lane closures, traffic delays, increased truck traffic, increased noise and vibration are expected
- Emergency access will be maintained at all times
- The Mercer Island Park and Ride will be open

90th Place S.E.

The pipe will come off the I-90 Trail and follow 90th Place S.E. to keep wastewater flowing efficiently. The pipe will be installed on both the north and the south sides of the road, depending on location. The roadway is very narrow. The full width of the right-of-way will be needed to install the pipe.



What to expect:

We know this work will be disruptive to those living nearby. We will have more information about what you can expect as we get closer to construction, but here is what we know so far:

- The pipe will be installed using an open trench from the street surface
- Emergency access to home will be maintained at all times
- Some landscaping and structures within the right-of-way will be removed to complete this work; these areas will be restored to City of Mercer Island standards following construction completion
- Lane closures, traffic delays, increased truck traffic, increased noise and vibration are expected

In addition to road work, there will be significant construction impacts in the cul-de-sac at the end of 90th Place S.E. The force main that pushes sewage from the North Mercer Pump Station will transition to a gravity pipeline that allows sewage to flow downhill to the East Channel. At the transition point, there will be an underground discharge structure and odor control facility. Above ground, just past the guard rail at the top of the ravine, there will be an electrical cabinet, an air vent, and a stack to release clean air.

Construction on North Mercer Way and Island Crest Way

We heard input from the community to stay off North Mercer Way as much as possible. While much of the new sewer alignment will travel along side streets or the I-90 Trail, there is one stretch of North Mercer Way that was unavoidable. We understand that work on North Mercer Way and Island Crest Way will be disruptive, so King County will require crews to minimize the time spent working on those roads.

While working on North Mercer Way and Island Crest Way, crews will work Saturdays and extended weekday hours. Cleaning up the work zone and adding steel plates in the evening, then opening everything back up in the morning takes a lot of time, so North Mercer Way and Island Crest Way road closures will remain in effect around-the-clock so crews can finish work on those streets as quickly as possible. We will know more about the schedule and duration of this work after awarding a contractor in 2020.

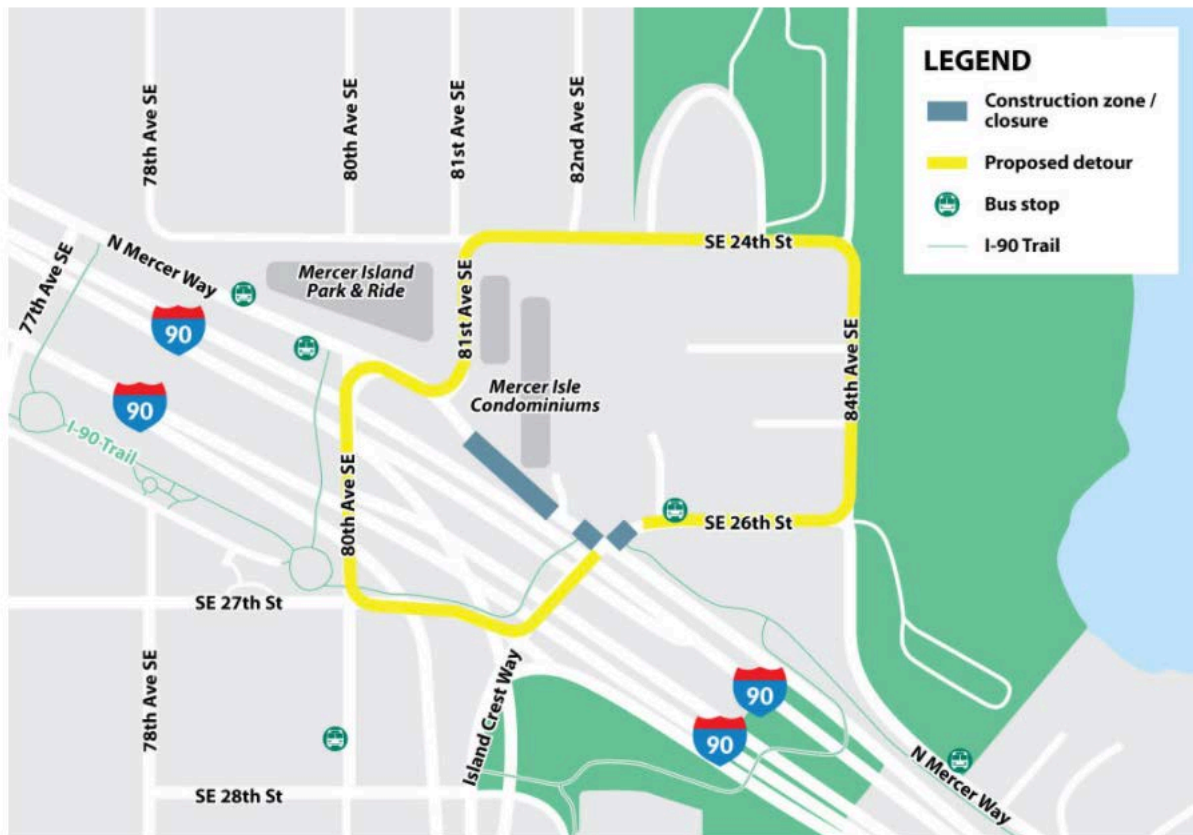


The pipe will follow along the south side of North Mercer Way and between 81st Avenue S.E. and Island Crest Way. From Island Crest Way it will follow the I-90 Trail.

Detours

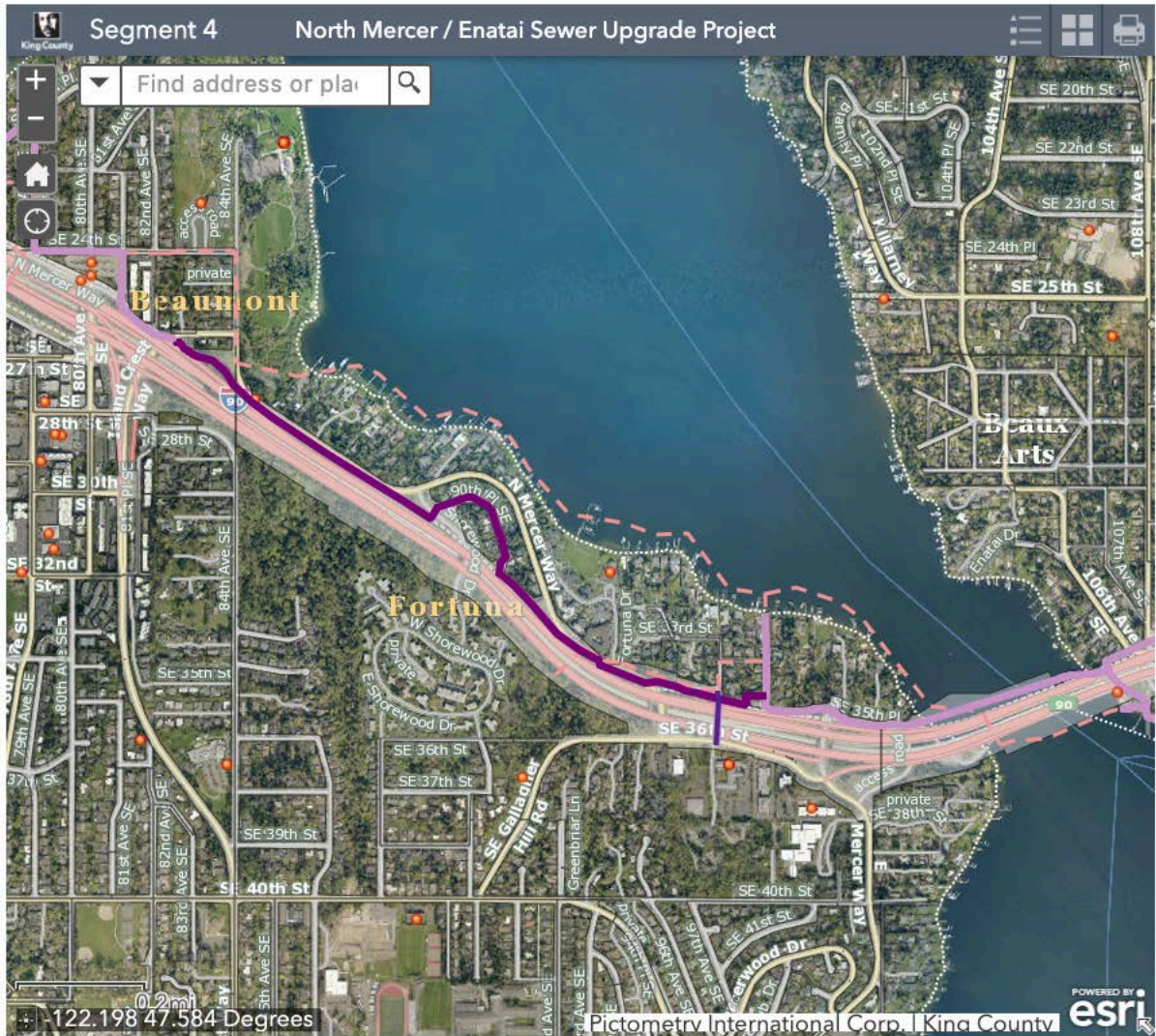
There will be three full closures at points along North Mercer Way and Island Crest Way. During those closures, we will use detours to keep traffic moving on Mercer Island. The project team worked with City of Mercer Island staff, as well as King County Metro, to determine detour routes. Flaggers and signs will mark all detours.

The project team has also been working with residents and property managers at the Mercer Isle Condominiums to coordinate traffic flow for residents.



I-90 Trail

A large portion of the new pipe will follow the I-90 Trail. The exact alignment of the pipe with or adjacent to the trail varies by location.



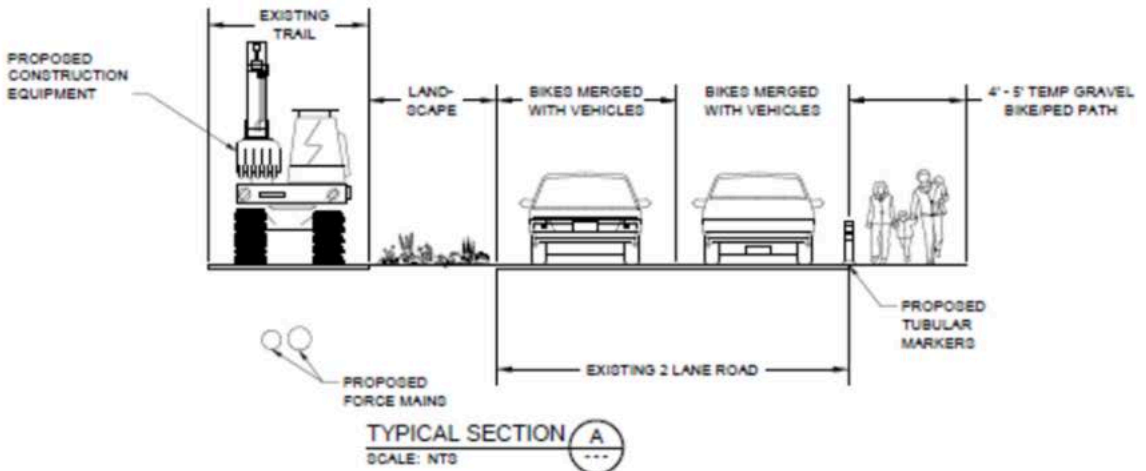
I-90 Trail Across Mercer Island to See Major Construction

Pipeline work that affects use of the I-90 Trail on Mercer Island is expected to begin in 2021 and take up to two years to complete. As the work progresses, portions of the trail will be closed for construction, with the rest remaining open for use.

Crews will use open-cut trenching to lay pipe along the trail. In open-cut construction, crews dig from the surface to the pipe depth, lay the pipe, then cover the pipe and restore the surface. The work zone along the trail will be at least as wide as 26 feet to safely accommodate materials, equipment and construction workers. In some areas it may be wider.



Temporary trail closure and detours along North Mercer Way adjacent to the I-90 Trail



Detour plan for North Mercer Way adjacent to I-90 trail

Detours will be in effect across Mercer Island while sections of the I-90 trail are temporarily closed. Once permits are issued for the project, detour routes will be finalized. It is likely, however, that North Mercer Way next to the construction zone will continue to serve two-way traffic. A section next to the road or on existing sidewalks/trails will be made accessible for pedestrians and bicycles.

I-90 Trail and Mercer Slough trail in Bellevue

The I-90 trail and Mercer Slough trail in Bellevue will be affected by construction access for maintenance work on an existing sewer and pump station. No pipe will be installed under these trails in Bellevue, but the trails will be used for construction access. The I-90 and Mercer Slough trails will generally remain open during construction in the Mercer Slough. There may be short waits while equipment is moved.



Signage will be provided directing all users to the selected detour. Flaggers will direct traffic as needed.

I-90 Trail restoration



Rendering showing the restored trail along North Mercer Way by Covenant Shores. This rendering depicts three years of tree growth.

The restoration plan for the I-90 Trail on Mercer Island emphasizes the aesthetic character of the trail and surrounding neighborhood. When construction is finished and trail restoration is complete, the trail will have several improvements from its current condition:

- Wherever site conditions allow, on Mercer Island the restored trail will be 12 feet wide with 2 feet of gravel on either side to meet WSDOT trail restoration standards. This will generally increase the width, which is currently 10 to 12 feet wide in most places, and less than 10 feet in some places.
- Restoration will repair trail surfaces in the work area, including those that currently have tree-root or other damage.
- Upgraded signage and improved surface conditions will increase safety at the trails intersections with roadways.
- Affected access points will be improved to full compliance with ADA requirements.
- The place for tree removal and replacement will provide increased sight distances and clear zones for users.
- We will only restore trail sections impacted by the project.

The plan for trees

In order to safely install the new pipe, our crews will need an area approximately 26 feet wide along the I-90 Trail. We expect to remove several hundred trees and plants along the route.

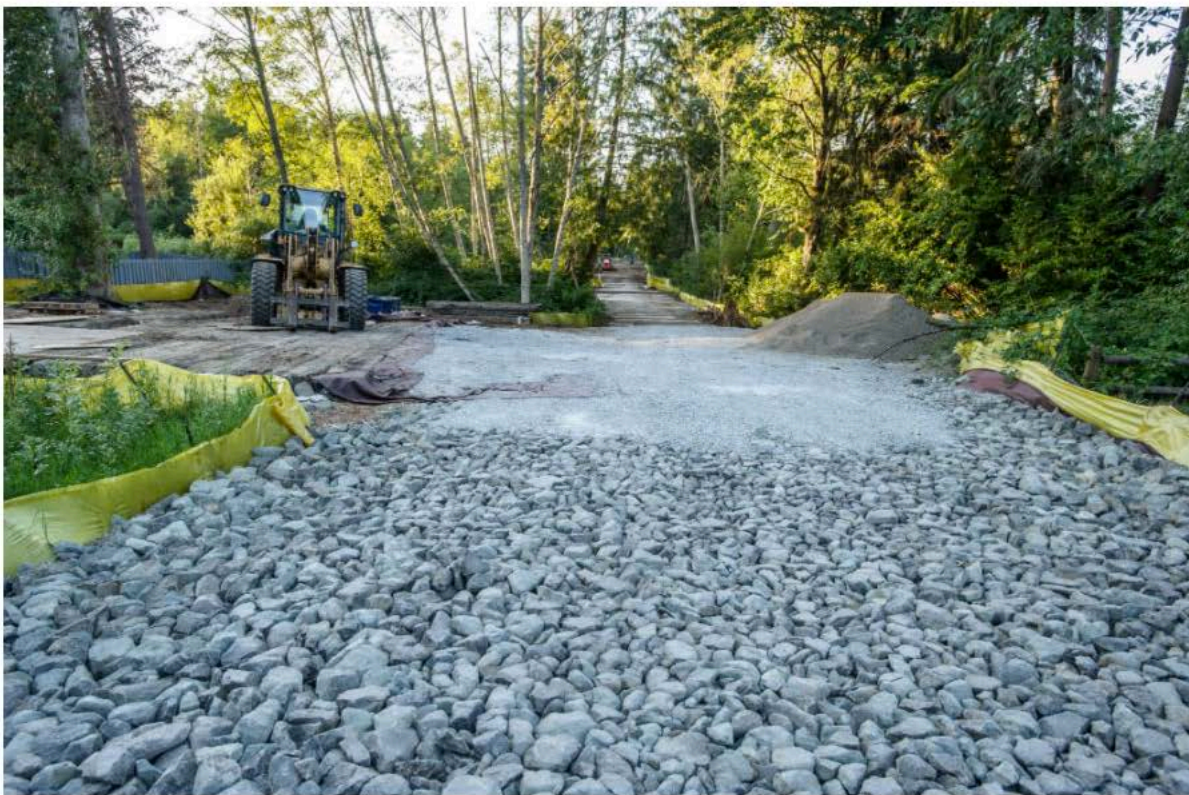
When work is complete, we will replant at least one tree for every mature tree that is removed. Tree replanting standards are set by the Washington State Department of Transportation, City of Mercer Island, or City of Bellevue, depending on where the tree is located.

King County is committed to protecting and enhancing the environment. Restoration on this project will provide benefits, including:

- The size, species, and placement of trees will be chosen to reduce tree impacts on the trail and its users.
- Root barriers along the edge of the trail will help prevent future root damage to the trail.
- Finished tree placement will provide a greater clear zone for users along the sides of the trail and alleviate current conditions about sight distance.
- Planting new trees within the I-90 corridor on Mercer Island beyond the area impacted by the pipe installation.



Example site before construction



Example site during construction



Example site after construction

Lift Station 11 at Fruitland Landing

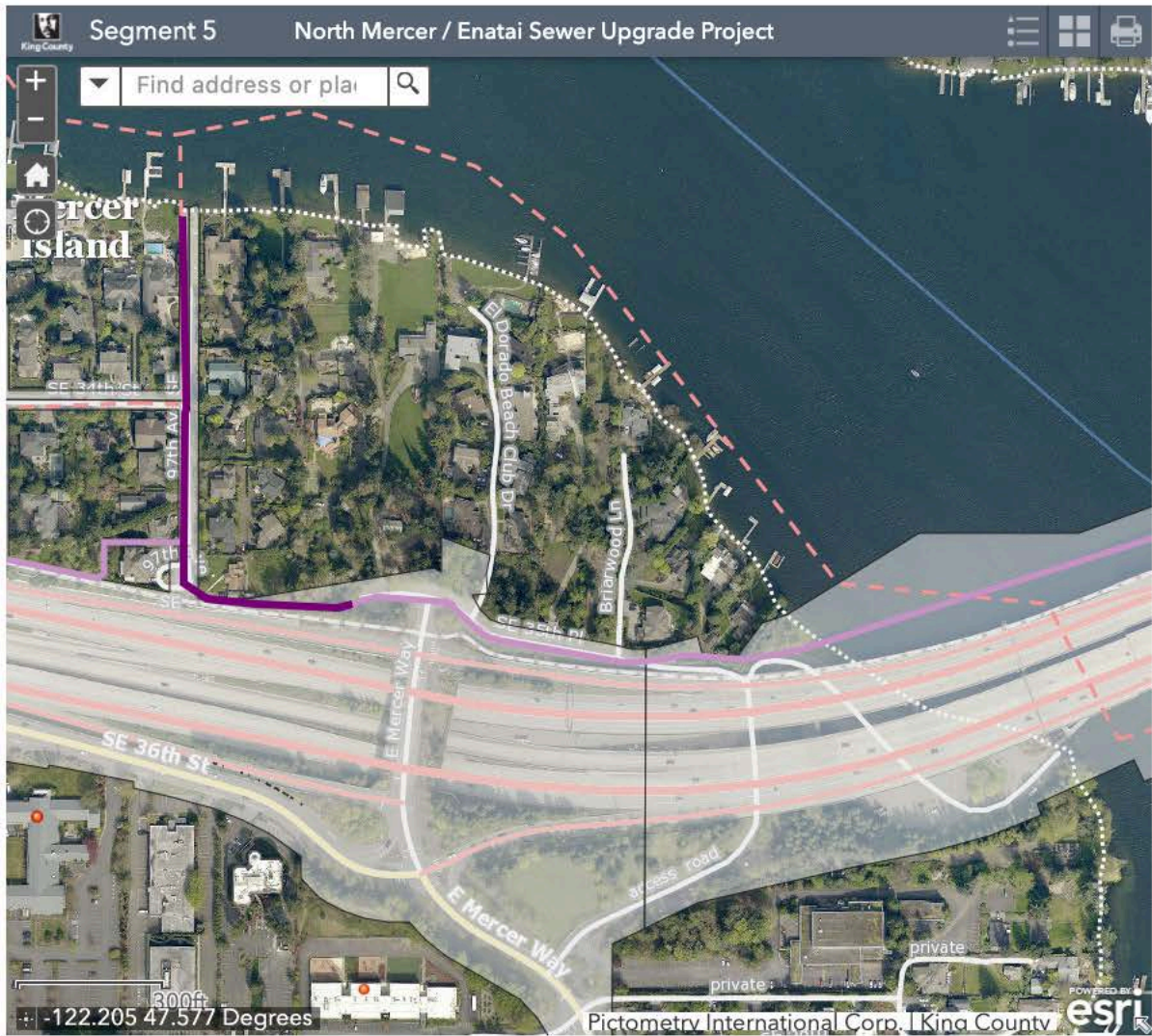
Lift Station 11 is located at the north end of 97th Avenue N.W. in Fruitland Landing Park. This lift station directs flows from the City of Mercer Island's local sewer line to our regional sewer line. Upgrades are needed to redirect flows from the existing King County pipe in Lake Washington to the new upland pipe.

While these upgrades are completed, construction will be noticeable to those who live, work and play nearby. The park will be restored to its existing condition upon project completion.



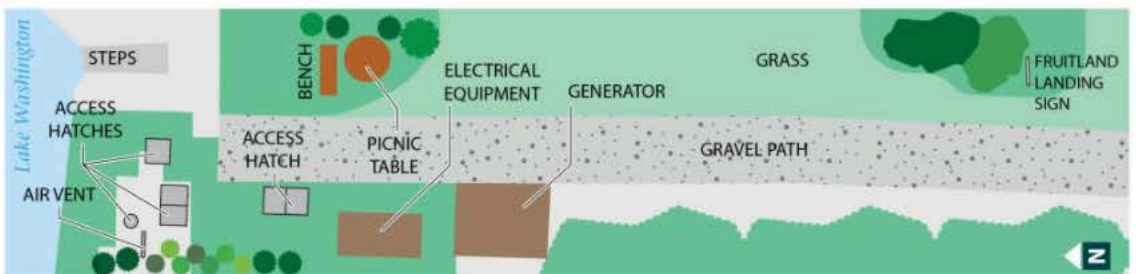
97th Avenue S.E.

From Lift Station 11 in Fruitland Landing, a new pipe will be installed near the middle of 97th Avenue S.E. and connect to the new pipe on the north side of the I-90 Trail. The roadway is very narrow and has many existing utilities. The full width of the right-of-way will be needed to install the pipe.



Area restoration

Once the work is done and Fruitland Landing is restored, there will be changes at Fruitland Landing and along 97th Avenue S.E. The half-street where a trench is cut for the force main extension will be repaved. Fruitland Landing will have an above ground generator and electrical cabinet, and the existing vaults will be updated. Vegetation will be planted to replace what is removed for construction.



Rendering showing restoration of Fruitland Landing.

What to expect during construction

- Fruitland Landing will be closed during construction of Lift Station 11
- Traffic will be restricted along 97th Avenue S.E. during work hours
- Materials stored at the park
- Noise from temporary pumping system
- Construction pits at park entrance for re-lining existing pipe and intersection of 97th and 34th avenues.
- Flaggers to keep traffic moving
- Emergency access maintained at all times

See our [project fact sheet](#) for more information on construction at Fruitland Landing and 97th Avenue S.E.

Mercer Island boat launch and work across the East Channel of Lake Washington

The pipeline will extend from East Mercer Way on Mercer Island to Enatai Beach Park in Bellevue, in the water just north of the I-90 bridge. The design of the pipeline considered the many public users who could be affected: commercial and recreational boat traffic in the lake; nearby shoreline property owners with docks on the lake; and the users of the Mercer Island Boat Launch on the west side and Bellevue's Enatai Beach Park.



1 STAGING AREA

The contractor will use part of the parking lot to store materials. While some parking spaces will be temporarily lost, the remaining spaces will be available. Estimated duration is two years.

2 MAINTENANCE VAULT

A vault for future maintenance access will be installed adjacent to the frontage road. Flaggers will direct traffic when intermittent access for construction equipment across the frontage road is required. Estimated duration is three months.

3 FRONTAGE ROAD

Siphon pipe installation in the frontage road will take about two weeks. One lane of traffic will be maintained, with traffic control at all times. This work will take place outside peak boating season. A concrete bulkhead will be removed and replaced with anchored logs and plantings for shoreline protection. Work outside the roadway, including restoration, will take about three months.

Work at the Mercer Island Boat Launch

The East Channel Siphon work will affect the Mercer Island Boat Launch to some extent for up to two years. However, the work will never close off access to the launch for users. The diagram below shows the main work components that will affect this area.

Installing the siphon across the East Channel of Lake Washington

The new pipeline crossing the East Channel will be an “inverted siphon” – essentially a U-shaped pipeline with high ends on the shorelines and a low point in the middle along the lake bottom. Called the East Channel Siphon, it will consist of three parallel pipes buried just below the lake bottom on the north side of the I-90 bridge. It will replace the aging pipeline on the south side of the bridge, which is too small to carry the amount of sewage expected by 2060. The new line’s three pipes (one that’s 12 inches in diameter and two that are 16 inches) will have plenty of capacity for future sewer flows.

Its position on the north side of the bridge moves it out of the way of many other utilities on the lake bottom south of the bridge and lines it up better to connect to a tunneled pipeline that’s going to be installed between the Bellevue shoreline and the Sweyolocken Pump Station on the Mercer Slough.



East Channel Crossing Overview

Installing a pipe across the bottom of a lake

Installation of a new siphon across the East Channel will use well-tested “cut and cover” construction methods involving divers underwater and work crews on barges on the surface.

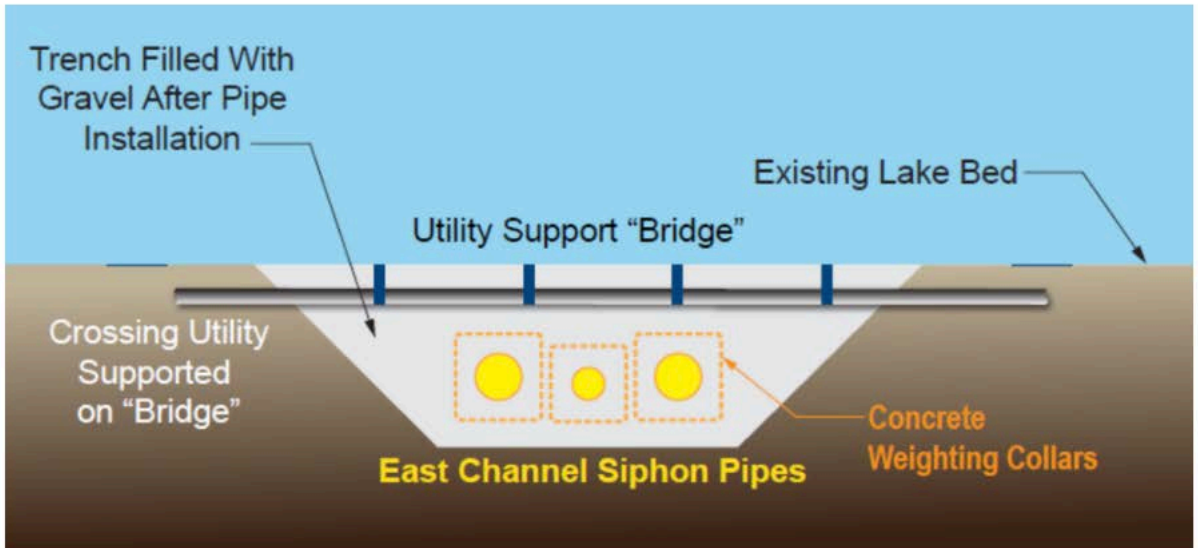
First, divers will locate any utilities on the lake bottom that the new pipeline will have to cross. They’ll use water jets to dig out the soil around these utilities, then build a sort of bridge over the dug-out area and attach the utilities to that bridge to support them as the new sewer pipeline is installed underneath them.

Following the divers’ work with existing utilities, a barge on the lake surface with a clamshell dredge will move across the channel digging a trench in the lake bottom that’s about 10 feet wide at its bottom. The dredge will dump the soil it excavates onto another barge to be hauled away. With the trench dug, workers will use the clamshell dredge to drop gravel (carried in a third barge) into the trench to make a bed for the pipes to lie on.

With the trench and bedding prepared, the workers on the surface will float segments of the new pipeline above the trench and let them fill with water. The weight of the water, along with concrete collars that will be wrapped around the pipes at some points, will let the pipe sink to the bottom. Once it’s lying in the trench, divers will bolt together the individual segments. Finally, the clamshell dredge will drop more gravel into the trench to fill it back up to the original level of the lake bottom.



Clamshell dredge



Siphon section

What to expect during construction:

- Access to boats on the lake will be maintained at all times
- Contractor will follow approved environmental regulatory permits for fish windows as permitted
- No work on the water during Sea Fair
- Barge, construction crew and divers on the lake around construction areas
- Narrower navigation lane

Restoring the work sites

The bottom of the lake, the east and west shorelines, and some paved surfaces at the Mercer Island Boat Launch all require restoration after the pipeline is installed. On the shorelines, we will rebuild areas affected by construction with logs, heavy gravel, and plantings above the water level to improve habitat conditions. On the Mercer Island side, restoration will replace deteriorating concrete bulkhead with more natural logs and plantings. Elsewhere at the boat launch, surfaces damaged by construction will be repaved.

Enatai Beach Park

Enatai Beach Park is a focal point of the North Mercer/Enatai Sewer Upgrade Project. The new sewer line from Mercer Island will cross under the East Channel of Lake Washington near the I-90 Bridge, landing at the north end of the park. At that point, the pipeline will split into two paths, both leading to the Sweyolocken Pump Station, about a half-mile to the east.



What to expect during construction:

- Noise and dust typical of construction
- Additional vehicle traffic on surrounding streets
- Construction equipment such as excavators, large trucks, backhoe, and soil compactors
- Work hours primarily during daytime but some construction tasks may require night or weekend work
- Advance notice of any noisy construction outside of approved hours
- Intermittent closures of portions of the park

Work that affects Enatai Beach Park is expected to begin by late 2020 and continue intermittently for up to four years. We will confirm the timing and duration of these closures after hiring a contractor in 2020

The map shows the park areas affected and the work planned during each phase of the project as currently proposed. Some of this may change as project design is finalized.

See our [project fact sheet](#) for more information on construction and restoration at Enatai Beach Park.

Enatai Beach Park: During Construction



- 1 GENERAL STAGING UNDER BRIDGE**
Establish general staging area under I-90 for storing equipment and materials, fenced off from public access.
- 2 EAST CHANNEL PIPE**
Assemble pipe for East Channel Siphon into segments to be floated into the East Channel, lowered into trench on the channel bottom, and buried. Restore affected shoreline.
- 3 ENATAI SIPHON PIPE**
Assemble pipe for Enatai Siphon in the park, to be floated out on Lake Washington to line up for pulling into a drilled hole under the Enatai neighborhood.
- 4 STRUCTURES AND CONNECTING SEWER**
Construct new underground pipeline diversion structure and odor control structure, as well as a new sewer extending south to the Enatai Interceptor.
- 5 SWIM BEACH SEWER REHAB WITH TEMPORARY BYPASS PUMPING**
Install temporary pump station to redirect flow around the work area while Enatai Interceptor across the swim beach is being rehabilitated.
- 6 ENATAI INTERCEPTOR REHAB WITH TEMPORARY BYPASS PUMPING**
Construct temporary underground pump station to redirect flow to the new Enatai Siphon while downstream Enatai Interceptor is being rehabilitated.
- 7 ACCESS ROADWAY AND FINAL RESTORATION**
Restore entire site and construct new access road

The map illustration shows the park areas affected and the work planned during each phase of the project as currently proposed; some of this may change as project design is finalized.

What to expect after construction

When construction in the park is complete, we will restore all disturbed areas. The restoration work will be coordinated with the City of Bellevue, returning the affected sites to a condition that is as good as or better than before the work began. The access road that will be built as part of the project is designed to be compatible with a future phase of park development that may include additional public parking and a hand-carry boat launch under the I-90 bridge.

The only permanent above-ground structures to remain will be the odor control structure's cabinet and inlet and exhaust pipes, all located under the I-90 bridge. On the ground, you'll see hatches installed to provide access to underground portions of the new system. The new roadway that will provide maintenance staff with access to all the new system equipment will be designed in coordination with the City of Bellevue.

Crews will also enhance a section of the shoreline north of the swim area. We will install large logs and return the shoreline to a pebbly surface. This will provide habitat for spawning salmon and other wildlife that use the shoreline.

Enatai Beach Park: After Construction



Minding the peak season

We know that the period between Memorial Day and Labor Day is the busiest time at Enatai Beach Park. As much as possible, we will schedule construction outside of that period. However, regulatory agencies may require any work that could affect fish in Lake Washington to be completed during the “fish window” – the period of time when migrating fish are less likely to be in the area. The standard fish window overlaps with some of the popular summertime use of the park.

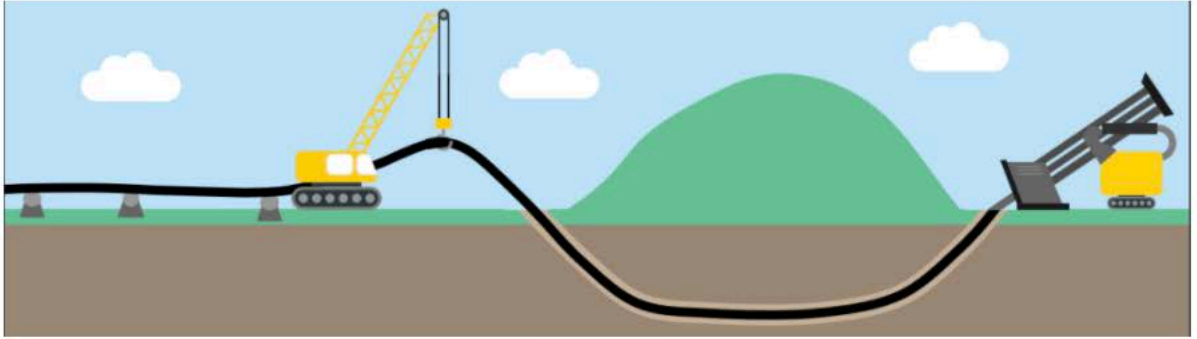
We are working with natural resource agencies to plan this work to protect fish species that migrate through the area, while minimizing as much as possible any work that will impact use of the park during its most popular season.



Installing a new pipe under the Enatai hillside

In order to increase capacity in our sewer pipes, this project includes the installation of a new 32-inch diameter sewer pipe under the Enatai hillside from Enatai Beach Park to the Sweyolocken Pump Station.

To avoid surface impacts in critical areas and maintain safety depth standards, King County will use Horizontal Directional Drilling (HDD) to install the new pipe deep under the hill.



With HDD, the contractor uses equipment on the surface to drill an underground pathway for the new pipe, and then to pull the pipe through the path. While much of the work occurs underground, neighbors will see construction at both ends of the new pipe.

Horizontal directional drilling video





Crews use a type of mud that helps the hole stay open as they make the hole bigger using a reamer as seen in the photo above.



Crews install the new pipeline using equipment that drills a hole large enough to pull the pipe through. There is a wire on the surface that tracks the location of the drilling equipment underground.

Once the bore hole is prepared, the pipe will be pulled through the hole from Lake Washington towards Sweyolocken pump station. The final assembly and pull-through will take approximately two weeks.



The pipe that will be placed under the Enatai hillside will be assembled at Enatai Beach Park and strung out in the water to the north of the park before it is pulled through the hole. When the crew pulls the pipe through the hole, the work must continue until it is complete. This will mean one to two nights of overnight work.

Fixing the existing Enatai Interceptor



Enatai Interceptor highlighted in yellow

The North Mercer/Enatai Sewer Upgrade project includes repair of a segment of the existing Enatai Interceptor that runs from Enatai Beach up through Mercer Slough to the Sweyolocken Pump Station. To complete the repair, crews will open-cut and slip line a segment of the pipe at the Enatai Beach Park, spot repair existing liner along the beachfront homes, and insert a new a liner into the existing pipe along the Mercer Slough to the Sweyolocken Pump Statoin.

The segment of the work that will occur at the Enatai Beach Park swim beach will require closing the beach after Labor Day. This work will occur towards the end of the construction project, once the new pipe underneath the Enatai hillside is operational. It will likley occur in the fall of 2023.



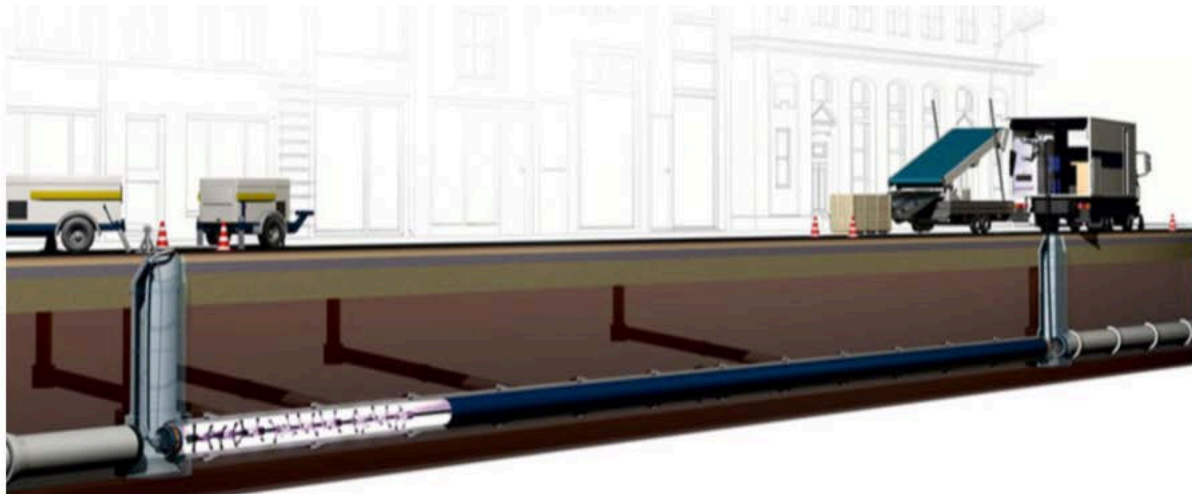
Most of the repair work will take place from barges in the water. The barges will be moved throughout work progress.



The existing pipeline will be accessed from the various maintenance holes that run along the line from Enatai Beach Park, under some docks, and up the Mercer Slough.



Construction work at Enatai Beach Park and in Mercer Slough will be contained by "super sacks" that protect habitat and water quality outside of the construction zone.



To install the new liner, crews insert the liner between maintenance holes.

Except for work at the swim beach, most community members won't notice this work. King County Wastewater Treatment Division will work directly with waterfront homeowners on dock access. Cyclists and pedestrians on the I-90 Trail and Mercer Slough bike trail will see some delays as crews move equipment between locations. We will provide advance notification of all construction impacts.

Thank you for visiting our online open house!

We expect to complete project design next year. Once we hire a contractor, we will provide more detailed information on the construction schedule, detours, and more.

We are committed to keeping you informed about project progress and updates. In efforts to ensure we're doing so, we want to hear from you! Please fill out the form below and tell us how we can continue to keep you informed, and if you are receiving the information you need.

1. If you'd like to receive more frequent updates, please sign up here for email updates and/or text alerts updates:

Name

Email

Phone

Submit

2. How do you get information and news about King County projects? Select all that apply:

Community meetings or events

Flyer left at your door

Email

Mail - postcards, newsletters

Newspapers, online news site, blogs

One-on-one meetings

Online meetings and activities

Presentations at community group meetings

Social media - Facebook, Twitter, Nextdoor, etc.

Text messaging

Webpage

Other

Select a response

3. King County expects to complete design for the North Mercer Island/Enatai Sewer Upgrade project in 2020 and start construction in 2021. Do you feel you have enough information at this phase to understand the project?

Yes

No

If no, please explain what we can be doing to better meet your needs:

[Click to view results](#)

4. What advice would you give to the project team about engaging with you, your groups and organizations, and members of your community?

Share your thoughts and ideas...

Comment

5. Is there anything else you'd like to tell us?

Share your thoughts and ideas...

Comment

Thank you!

Contact us

Contact us if you have questions or concerns, would like more information, or want to be notified of any meetings or project updates.

Contact Kristine Cramer at 206-477-5415 or Kristine.cramer@kingcounty.gov OR

Bibiana Ocheke-Ameh at 206-477-5604 or Bibiana.ochecke-ameh@kingcounty.gov

www.kingcounty.gov/MercerEnataiSewer

Sign up for text alerts by texting KING MERCERSEWER to 468-311.

Alternate formats available upon request. Please call 206-477-5371 or TTY: 711.