

# NORTH MERCER ISLAND/ENATAI

# Sewer Upgrade Project

King County is upgrading four miles of sewer pipeline across north Mercer Island and south Bellevue. It is a big project that has been years in the making and will involve years of construction. Project work will be in heavily used public spaces, and in some residential areas. While the work to get there may involve temporary inconveniences, the upgrade will provide great public benefit.

We are committed to keeping you informed about what’s happening and why. This is one of a series of fact sheets that explain the North Mercer/Enatai (NME) Sewer Upgrade Project and what the public can expect—during construction and after the work is done.

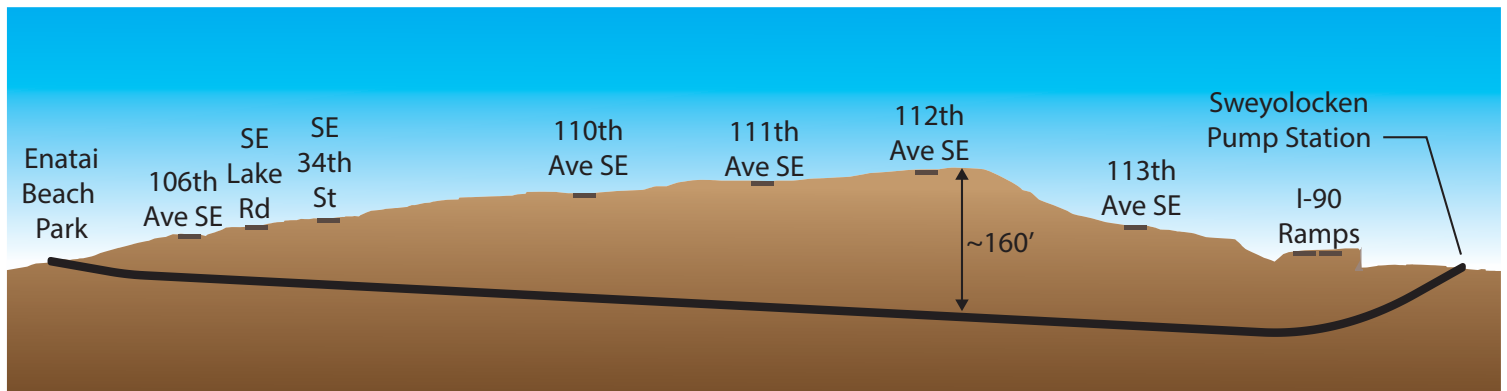
## Installing a new pipeline under the Enatai Hillside What’s Happening...and Why

The existing Enatai Interceptor in Lake Washington and Mercer Slough will be relined to continue moving its current volume of wastewater. In addition, a new pipe will be built under the Enatai hillside to carry additional wastewater as flows increase in the future. This combination of two pipelines was selected as the best way to convey expected flows into the future, to minimize community impacts, comply with environmental regulations, and reduce cost.



Installation of the new pipe will use a technique to avoid neighborhood disruption that drills a hole up to 160 feet below the ground. Crews will drill the underground hole from one end to the other—nearly 3,000 feet—and then pull the pipe through that hole.

The community will see some impact from the pipe construction at Enatai Beach Park and the Mercer Slough Nature Park, but not on residential streets.



# What to Expect During Construction

## How the Drilling will be Done

The process to install the new pipeline is called “horizontal directional drilling” (HDD). A drilling rig set up beside the Sweyolocken Pump Station will drill a small hole underground along a pre-defined route back to Enatai Beach Park. A wire on the surface will track the location of the drilling equipment underground so crews can redirect the drill as needed to stay on course.

Once the initial hole is created, crews will pull a piece of equipment called a reamer through it. The reaming process is repeated until the hole is big enough for the new pipe to come through.

Meanwhile, crews at Enatai Beach Park will begin to fuse together sections of 32-inch-diameter plastic pipe, floating the assembled pipeline out into Lake Washington until the entire 3,000-foot length is connected and ready for installation.

When the reaming has reached the necessary drill-hole size, crews will attach the assembled pipe to a cable. Cranes on barges in the East Channel will lift the pipe to align and steer it into the drilled hole during pullback. Equipment at Sweyolocken will then pull the pipe through the hole into its final position.

## Construction Schedule

The drilling and installation of the underground pipeline is expected to take approximately 6 months from start to finish. The work could start as early as spring 2022.

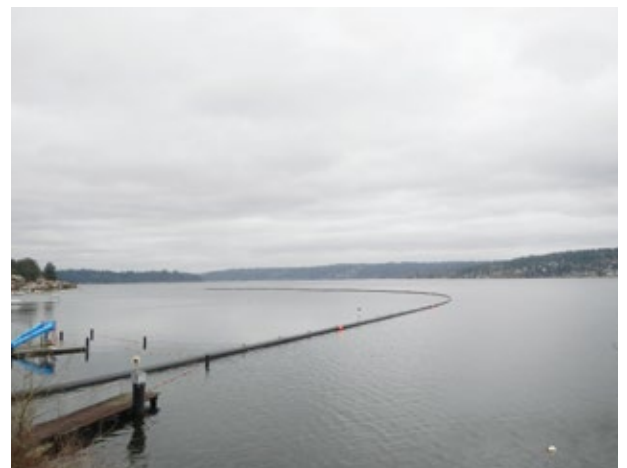
Once a contractor is hired, we will share more information about the schedule.

## Construction Impacts

**Work Hours:** The siphon pipe pullback will be a continuous 1- to 2-day operation once started, which will include night work. All other HDD work will take place during normal daytime hours.

**Dust and Noise:** Work at both ends of the siphon will generate typical construction equipment dust and noise. The contractor will follow standard construction practices to minimize these impacts.

**Traffic:** Surrounding streets will see a limited amount of additional traffic as construction crews and equipment travel to and from the work sites. No streets will be closed for any of the work.



**Recreational Uses:** The HDD construction will close the north end of Enatai Beach Park and the Sweyolocken boat launch on Mercer Slough. The work at Sweyolocken also will close a portion of the Mercer Slough Bike Trail, and detours will be established for trail users.

**Lake Washington Navigation:** The siphon pipe may be in the East Channel of Lake Washington for about 2 weeks as it's being assembled before pullback. It will not be anchored to the lakebed. Work boats staffed 24 hours a day will orient it to maintain a navigable channel.

**Wetland Impacts:** At the Sweyolocken end of the Enatai Siphon, crews will install a casing to cross under two existing pipes. Some of this work will occur in the wetland beside the pump station, which will be restored after construction at Sweyolocken. Pipe assembly at Enatai Beach Park will result in some disturbance of the Lake Washington shoreline.



## Restoring the Work Sites

When construction is complete at each of the siphon endpoints, crews will restore all disturbed areas to a condition that is as good as or better than before the work began.

A new maintenance access road at Enatai Beach Park has been designed in coordination with the City of Bellevue to be compatible with a future phase of park development. Crews will enhance a section of the shoreline north of the swim area by installing large logs and returning the shoreline to a pebbly surface. This will provide habitat for spawning salmon and other wildlife that use the shoreline.

Crews will replant disturbed wetland and buffer areas with native vegetation, and plant new trees in areas where existing trees had to be removed. Crews will also restore paved and other improved areas to their pre-construction conditions after the work is completed. Repaving of the access road will happen after all pipe installation at Sweyolocken is complete.



## What's Next

King County is currently bringing contractors onboard. Once all documents and paperwork are finalized, construction is expected to begin early 2022.

Overall, construction will take four years, though most work locations will see shorter durations.

Our team will share information so neighbors know what to expect during construction and beyond. Here is what you can expect from us moving forward:

- Attendance at community events\*
- Project newsletters, fact sheets, and field work notifications
- Monthly project web updates
- Online/in-person open houses\*
- Briefings online/in-person for interested community groups\*

We are committed to continuing to be a good neighbor during construction. We will share information about construction on our website, in project emails, and through posted information at the park.

*\*In accordance with Seattle/King County Public Health guidelines.*

## Fish Windows— Timing Is Everything

State and federal regulatory agencies require work that could affect fish in Lake Washington to be completed during a “fish window” – a period of time when spawning or migrating fish are less likely to be in the area.

King County is working with natural resource agencies to plan the work in Lake Washington’s East Channel along Enatai Beach Park to protect fish species that migrate through the area, while minimizing as much as possible any work that will impact park and water users during the popular summer season.

The floating pipe work needs to occur in a fish window. The construction schedule for the pipe float will be determined once a contractor is on board, but it will occur late fall or early winter.



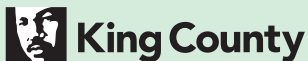
## NORTH MERCER ISLAND/ENATAI Sewer Upgrade Project

**Talk to us!** For more information, or to schedule a virtual meeting, please contact:

The community services team at **425-305-3578** or **NMEsewer@kingcounty.gov**

Visit the project Web page at **[www.kingcounty.gov/MercerEnataiSewer](http://www.kingcounty.gov/MercerEnataiSewer)**

Sign up for email and text alerts on the project Web page.



Alternative formats available  
206-477-5371 or TTY replay: 711

@KingCountyWTD

