



NORTH MERCER ISLAND/ENATAI Sewer Upgrade Project



King County

Department of Natural Resources and Parks
Wastewater Treatment Division

King County is upgrading four miles of sewer pipeline across north Mercer Island and south Bellevue. It is a big project that has been years in the making and will involve years of construction. Project work will be in heavily used public spaces, and in some residential areas. While the work to get there may involve temporary inconveniences, the upgrade will provide great public benefit.

We are committed to keeping you informed about what's happening and why. This is one of a series of fact sheets that explain the North Mercer/Enatai (NME) Sewer Upgrade Project and what the public can expect—during construction and after the work is done.

Open cut construction on residential streets: *What's Happening... and Why*

Along the East Channel of Lake Washington, from the North Mercer Pump Station to the Mercer Island Boat Launch, crews will lay about two miles of new pipeline as part of this sewer upgrade project. About half of the new pipe will be in public streets, with the rest on the I-90 Trail. The work will have an impact on everyone who lives or travels on the affected streets.

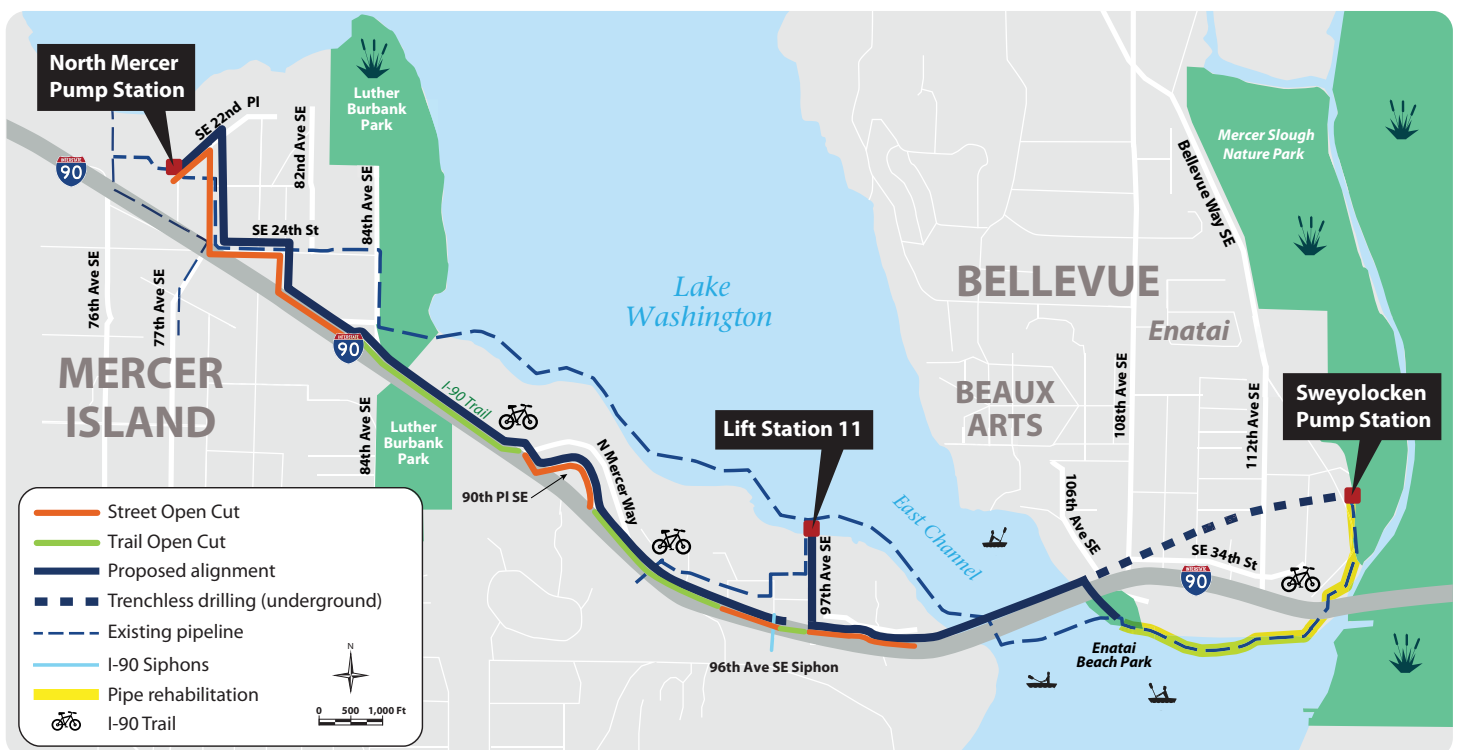
Crews will use a construction technique called “open-cut” trenching to lay the pipe underground. During open-cut construction, crews dig from the surface to the pipe depth. Then they lay the pipe, cover it and restore the surface. Across Mercer Island, the trenches will vary in size from approximately 8 to 30 feet wide. Trench size will depend on the size of the pipes being installed and the available space at each location. The pictures below are examples of open cut construction.



What to Expect During Construction

Construction details – such as exactly when different pipe segments will be built and what restoration will look like – are still being figured out. The County is working closely with the City of Mercer Island on construction permits. Once a contractor is hired in 2020, construction plans will be finalized. We will share more information when we have it. Here's what we know now:

- ▶ Like any construction project, there will be noise, dust and traffic impacts.
- ▶ Work hours will typically be during weekday daylight hours.
 - Some areas with greater traffic impacts, such as North Mercer Way, may require extended work hours.
- ▶ Traffic access will vary by location, with some streets requiring full closures and detours, and other streets reduced to one lane with flaggers.
- ▶ Emergency vehicles will always be able to access streets that are under construction.
- ▶ Metro and school buses may require detours. We will provide details when we have them.
- ▶ Services such as garbage, recycling, and mail will continue uninterrupted. There may be location or schedule changes, however, which will be communicated to residents at least 72 hours in advance.



What You'll See During Restoration

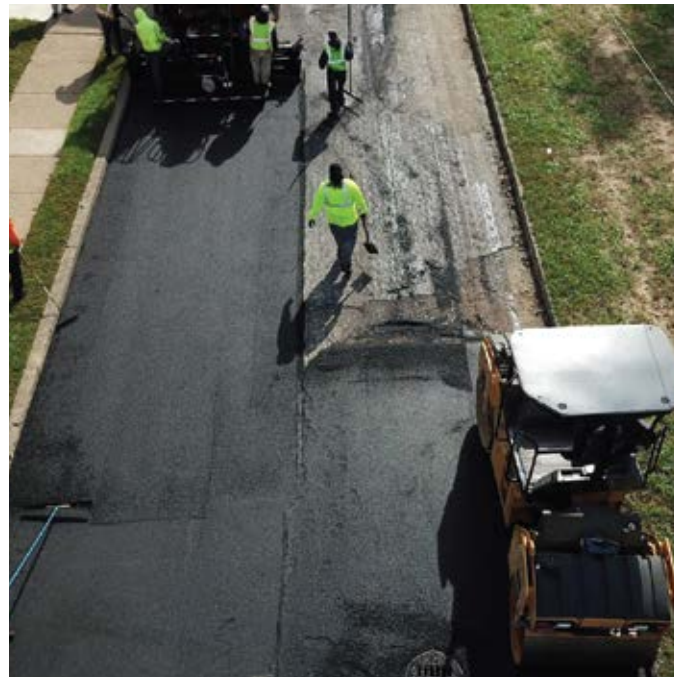
When open cut construction is complete, crews will restore all disturbed areas based on permit conditions agreed upon with the City of Mercer Island and other regulatory agencies.

Where private property is affected, we'll work with the property owners to make a restoration plan. In some cases, there are private landscaping improvements currently in the public right-of-way. We won't fully restore those areas, but we will give the owners advance notice so they can salvage landscaping for restoration on their own.



People may also see the following after construction is complete:

- ▶ Street restoration will vary by location, based on where the pipe was installed. Some blocks may get new pavement on the entire road surface; others will see just a half-street restoration where the trench was dug.
- ▶ Some restoration work, such as repaving streets and replanting vegetation, is best done during certain seasons. This could mean delays between the end of construction and restoration.
- ▶ Permits with Washington State Department of Transportation and the City of Mercer Island will determine the extent of vegetation to be restored along public rights of way.



What's Next

King County is currently bringing contractors onboard. Once all documents and paperwork are finalized, construction is expected to begin in spring 2022. Overall, construction will take four years, though most work locations will see shorter durations.

Our team will share information so neighbors know what to expect during construction and beyond.

Here is what you can expect from us moving forward:

- ▶ Attendance at community events*
- ▶ Project newsletters, fact sheets, and field work notifications
- ▶ Monthly project web updates
- ▶ Online/in-person open houses*
- ▶ Briefings online/in-person for interested community groups*



We are committed to continuing to be a good neighbor during construction. We will share information about construction on our website, in project emails, and through posted information at locations around the construction zone.

**In accordance with Seattle/King County Public Health guidelines.*

NORTH MERCER ISLAND/ENATAI Sewer Upgrade Project

Este boletín informativo brinda información acerca del proyecto de actualización del alcantarillado en el norte de Mercer/Enatai. Para obtener más información, llame al 425-305-3578, deje un mensaje con su número de teléfono e indique su idioma. Se proporcionará un intérprete sin costo.

本时事通讯为您提供有关 North Mercer/Enatai 下水道升级项目的信息。请致电 425-305-3578, 留言和您的电话号码并选择您的语言。我们将免费提供口译服务。

本通訊為您提供有關北 Mercer/Enatai 下水道升級項目的資訊。如需更多資訊，請致電 425-305-3578, 使用您的電話號碼留言 並選定您所講的語言。我們將免費提供口譯員服務。

Talk to us! For more information, or to schedule a virtual meeting, please contact:

The community services team at **425-305-3578** or **NMEsewer@kingcounty.gov**

Visit the project Web page at **www.kingcounty.gov/MercerEnataiSewer**

Sign up for email and text alerts on the project Web page.



Alternative formats available
206-477-5371 or TTY replay: 711

@KingCountyWTD

