



Hello,

King County Wastewater Treatment Division (WTD) is contacting you as a neighbor of the Sammamish Plateau Diversion Project. Our team is preparing for field work in the project area this fall. This will require temporary single-lane and turn-lane closures along East Lake Sammamish Parkway Northeast near your home.

The City of Sammamish recently issued permits to complete this work, and final schedule details are being confirmed. We expect this work to take place in September or early October.

During this work, the project team will be drilling along East Lake Sammamish Parkway Northeast to sample soil and install groundwater monitoring wells. This helps us better understand the conditions under the road.

### **Stay Updated!**

This work is scheduled to start as early as September and will take about two to three weeks to complete. Get emails and text notifications when the work is scheduled by signing up on our website: [kingcounty.gov/SammamishPlateauDiversion](https://kingcounty.gov/SammamishPlateauDiversion)

### **What To Expect**

A map of the general work area is located on page two. During this work, you can expect:

- **Temporary single-lane or turn-lane closures on East Lake Sammamish Parkway Northeast** between Northeast 49th Place and Northeast Inglewood Hill Road between 9:30 a.m. and 3:30 p.m.
- **Work hours** between 7 a.m. and 8 p.m., Monday through Friday.
- Work to take place for about **one to two days at each drilling location**.
- Message signs on East Lake Sammamish Parkway Northeast with advance notice of closures.
- **Flaggers directing drivers** through the area.
  - Local and emergency access will be maintained during the closure.
  - Flaggers will treat school buses as an emergency vehicle to reduce delays.
- Noise, dust, and vibrations typical of a construction site.

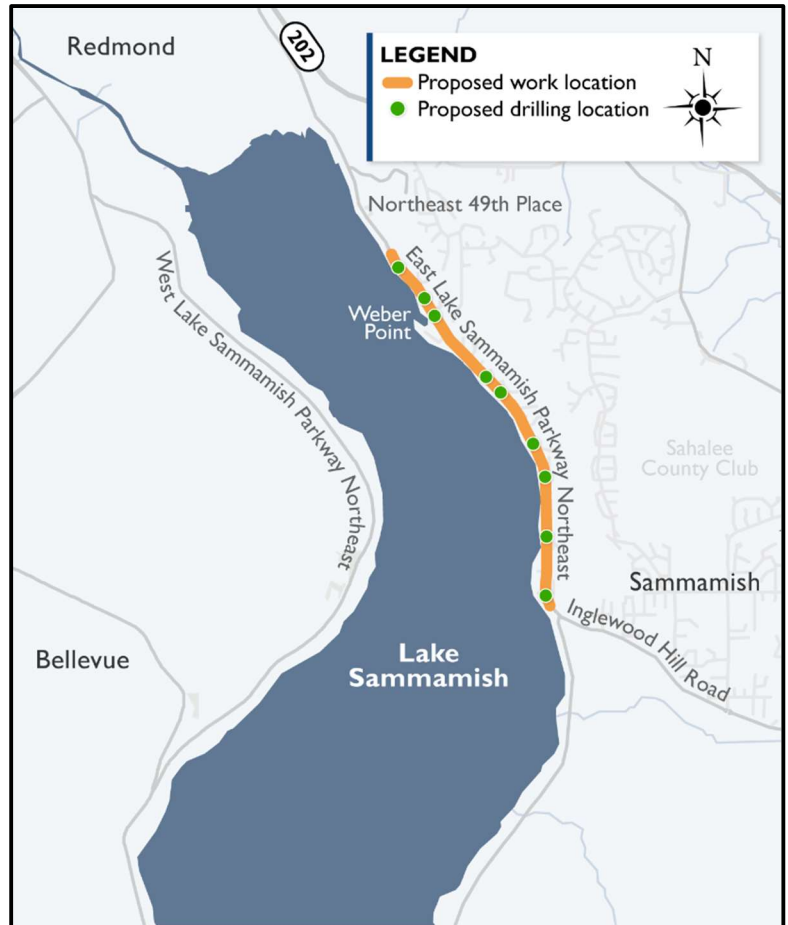
[Alternative Formats Available](#)  
206-477-5371 or TTY relay: 711

## Location of work activities

Crews will temporarily close a single lane or turn lane along East Lake Sammamish Parkway Northeast near your home. The map to the right shows the approximate closure and drilling locations.

## About the Sammamish Plateau Diversion Project

For over 50 years, King County WTD has protected public health and the environment by collecting and cleaning wastewater for the Puget Sound region. Operating a regional system allows flexibility to adapt our service to meet community needs as our region grows. Now, WTD is working on a program to send more wastewater flows in the future from the growing Eastside to Brightwater Treatment Plant in Woodinville. The Sammamish Plateau Diversion Project will help make that happen.



## Contact Us

If you have questions or concerns, or would like to discuss the project, contact Monica Van der Vieren at [monica.vandervieren@kingcounty.gov](mailto:monica.vandervieren@kingcounty.gov) or 206-477-5502.

Visit the project website to sign up for email updates at:

[kingcounty.gov/SammamishPlateauDiversion](http://kingcounty.gov/SammamishPlateauDiversion)

---

Para obtener los materiales traducidos, visite [kingcounty.gov/SammamishPlateau/Translations](http://kingcounty.gov/SammamishPlateau/Translations)  
請至 [kingcounty.gov/SammamishPlateau/Translations](http://kingcounty.gov/SammamishPlateau/Translations) 檢視譯的資料。

请在 [kingcounty.gov/SammamishPlateau/Translations](http://kingcounty.gov/SammamishPlateau/Translations) 翻译的资料  
翻訳された資料については、

[kingcounty.gov/SammamishPlateau/Translations](http://kingcounty.gov/SammamishPlateau/Translations) をご覧ください。

번역된 자료를 보시려면 아래를 방문하십시오.

[kingcounty.gov/SammamishPlateau/Translations](http://kingcounty.gov/SammamishPlateau/Translations)  
Переведенные материалы можно найти на  
[сайтkingcounty.gov/SammamishPlateau/Translations](http://сайтkingcounty.gov/SammamishPlateau/Translations)

