

# Sammamish Plateau Diversion Project



King County  
Wastewater  
Treatment

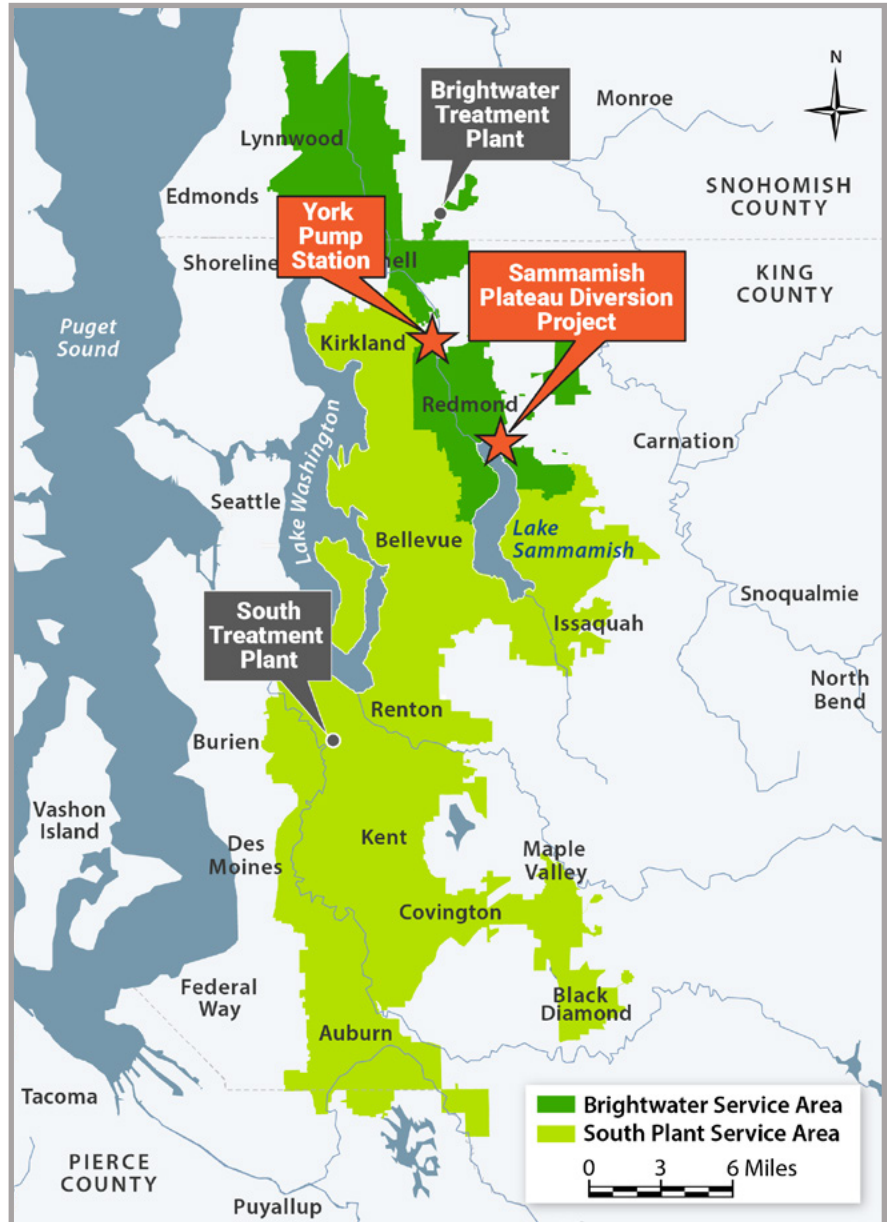
## A path to expand wastewater capacity in the Sammamish area

King County Wastewater Treatment Division (WTD) is at an important milestone in the Sammamish Plateau Diversion Project. This project will provide needed wastewater capacity to growing communities in the Lake Sammamish area.

Since 2023, the project team has gathered data and studied the area to find a path for a new wastewater pipe. This pipe will connect to King County's Northeast Lake Sammamish Interceptor.

This project will include the new pipe and upgrades to the York Pump Station near Redmond. We still have a lot of work ahead to do, so it's a good time to get involved.

**Keep reading to learn about the project corridor and what's next!**

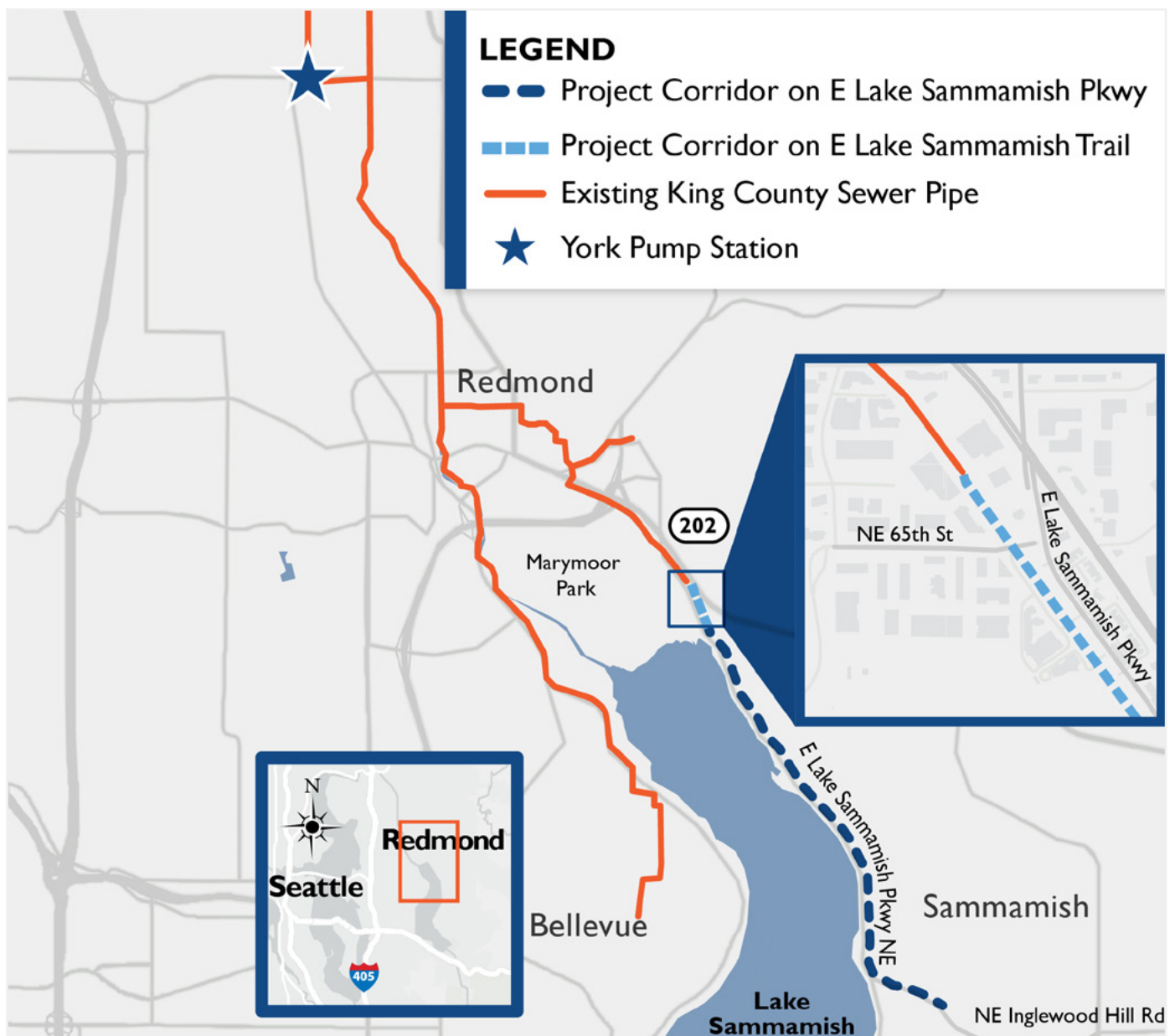


WTD is a regional utility that collects and treats wastewater in the central Puget Sound region. This map shows part of WTD's service area in relation to project work areas. Currently, wastewater from the east Lake Sammamish area flows south to King County's South Treatment Plant in Renton.

# New project corridor on East Lake Sammamish Parkway

The project team has identified a project corridor mostly along East Lake Sammamish Parkway. The corridor will extend for about four miles between Northeast Inglewood Hill Road and 211th Avenue Northeast in Sammamish to approximately Northeast 65th Street in Redmond. The team will identify the location for a new wastewater pipe within this corridor in design.

On the map below, the project corridor travels along a section of the East Lake Sammamish Trail to connect to King County's existing system in downtown Redmond. The project includes upgrades to equipment in King County's York Pump Station. These upgrades will help manage future flows from the Redmond and Sammamish areas.



On the map, the dashed blue lines show the new project corridor. The orange solid lines show King County's existing sewer pipes in this area.



The project team will continue to evaluate the area as we narrow down a pipe location.

## Finding the right place for the pipe

Since early 2023, the project team has been researching and evaluating the project area to find the best corridor for a new pipe.

During evaluation, WTD's project teams identify challenges or considerations that inform decisions. The northeast Lake Sammamish project area has features found in many populated Puget Sound shoreline areas: steep, forested slopes, streams, and development. These features create challenges for building and operating new wastewater facilities.

The project team identified a corridor mostly following East Lake Sammamish Parkway as the best area to build and operate a new pipe.

## What's next?

King County's project team is moving into early design. We expect this phase to last until mid-2027. The team will refine the pipe location within the corridor and identify construction methods.

The team will continue field work, research, and outreach as we move forward. You will receive advance notice of impactful activities. The team may need access to nearby properties. Our Real Property agents will work directly with property owners.

The project team will share the pipe location and construction methods as we complete the next phase.



Geotechnical work along East Lake Sammamish Parkway.

# Participate and keep up to date

We want to make sure you have opportunities to learn about the project, ask questions, and share your thoughts and concerns.

## CONTACT US

- **Visit our website** for more information and to sign up to receive emails:  
[kingcounty.gov/SammamishPlateauDiversion](http://kingcounty.gov/SammamishPlateauDiversion)
- **Contact the project team** to discuss the project and request accommodations to access this information: [SammamishPlateauDiversionProject@kingcounty.gov](mailto:SammamishPlateauDiversionProject@kingcounty.gov) | 425-537-7216

## Online Open House



### LEARN MORE AND PARTICIPATE!

Scan the QR code or visit:

[kingcounty.gov/wtd/Sammamish-Plateau-Online-Open-House](http://kingcounty.gov/wtd/Sammamish-Plateau-Online-Open-House)

### VISIT OUR ONLINE OPEN HOUSE TO:

- Learn about the project and corridor
- Share your thoughts

**Live now through the end of February 2026.**

Para obtener los materiales traducidos, visite [kingcounty.gov/SammamishPlateauDiversion/Translations](http://kingcounty.gov/SammamishPlateauDiversion/Translations)

請至 [kingcounty.gov/SammamishPlateauDiversion/Translations](http://kingcounty.gov/SammamishPlateauDiversion/Translations) 檢視譯的資料。

请在 [kingcounty.gov/SammamishPlateauDiversion/Translations](http://kingcounty.gov/SammamishPlateauDiversion/Translations) 翻译的资料

翻訳された資料については、[kingcounty.gov/SammamishPlateauDiversion/Translations](http://kingcounty.gov/SammamishPlateauDiversion/Translations) をご覧ください。

번역된 자료를 보시려면 아래를 방문하십시오. [kingcounty.gov/SammamishPlateauDiversion/Translations](http://kingcounty.gov/SammamishPlateauDiversion/Translations)

Переведенные материалы можно найти на сайте [kingcounty.gov/SammamishPlateauDiversion/Translations](http://kingcounty.gov/SammamishPlateauDiversion/Translations)

Alternative formats available

206-477-5371 or TTY relay: 711

