

WASTEWATER BACKUP PROTECTION FOR SOUTH PARK

SUMMER 2023

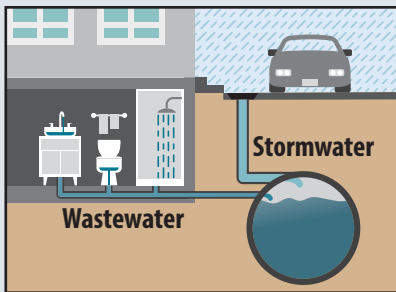
 King County
Protecting Our Waters



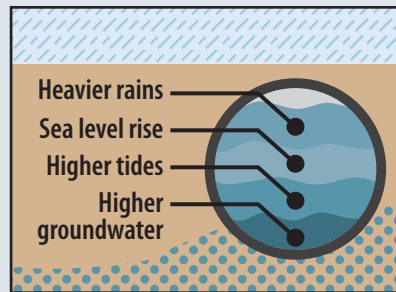
Reducing backups and planning for climate change

King County Wastewater Treatment Division (WTD) is working in South Park to reduce the potential for wastewater backups in homes. These efforts are even more important because climate change is bringing weather extremes to the Pacific Northwest. As we saw this past winter, big storms and high tides together can overwhelm public infrastructure and cause damage. So we are updating and adapting our wastewater system to prepare for severe storms, higher tides, and sea level rise – all to better protect the South Park neighborhood. We are working closely with Seattle Public Utilities (SPU) to design and implement solutions, prevent wastewater backups and protect water quality, public health and the environment.

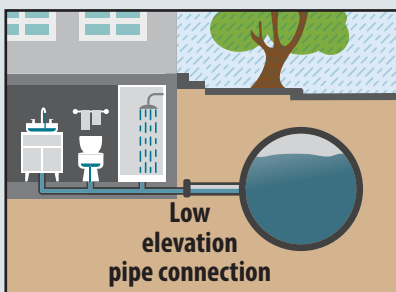
Flooding and wastewater backups can be caused by many things:



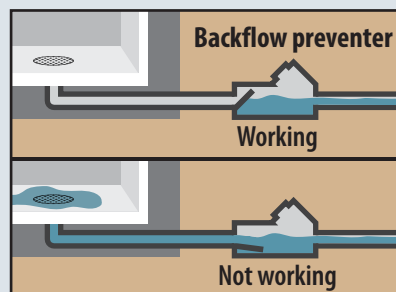
Pipes that carry both wastewater and stormwater fill up during storms more quickly than dedicated sewer pipes. WTD and SPU each manage large pipes in South Park that carry wastewater and stormwater from homes and businesses for treatment.



Heavier rains and rising sea level mean more water filling our pipes. When pipes are too full, combined wastewater and stormwater is released to the river to protect property. High tides can prevent this release.



Plumbing fixtures on private property that are lower than City and County pipes are more likely to back up, especially if they do not have a backflow preventer installed.




Backflow preventers on private property that are not maintained or are installed improperly. Property owners need to maintain this equipment and keep pipes on private property clear.

We are committed to improvements in the wastewater infrastructure we own in South Park to get ready for climate change impacts.

We will share our progress through written updates (by mail, email, and on our website) every three to six months.

Questions?

Please contact:
Caryn Sengupta
King County
WTD Community Services

 206-477-2514

 caryn.sengupta@kingcounty.gov

From big projects to backyard rain gardens, King County WTD is committed to Duwamish Valley communities.

Scan code for more info!



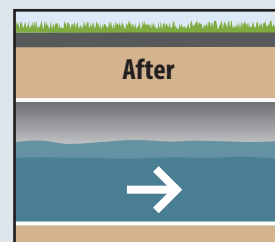
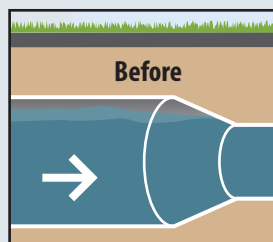
Timeline for WTD's work in South Park on wastewater backups

Ongoing:
Protect your health and safety. Provide cleanup assistance and temporary accommodations for people affected by wastewater backups.

2021

October 2021

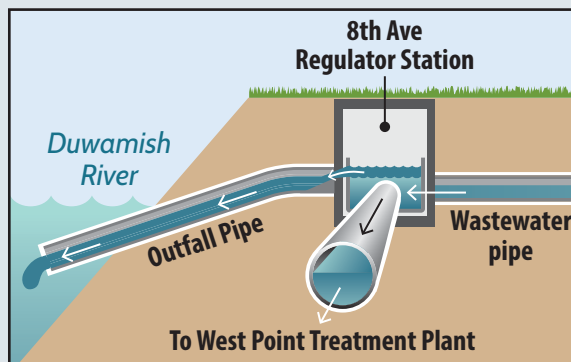
Replaced section of pipe to help wastewater flow more easily.



2022

February 2022

Changed settings in the 8th Ave Regulator station that control when water flows through the outfall pipe into the river to reduce the potential for wastewater backups in homes and streets.



Late 2022 - Early 2023

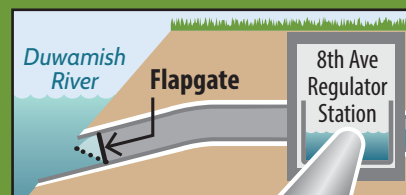
Worked with SPU to install backflow preventers such as grinder pumps to protect individual homes. Worked with SPU to develop a list of options that will reduce the potential for future residential wastewater backups caused by the impacts of climate change.

2023

2023 and 2024

Happening now We are working to identify which option or set of options will best help us meet our goal of protecting public health in the face of climate change. We will keep you updated during this process through communications like this one.

Planning for the future Started a project to install a flapgate on the 8th Ave Regulator Station to stop river water from entering the outfall pipe during high tides.



2024

2024 and beyond

Once the recommended options are chosen, WTD will assemble a team of experts with experience in engineering, operations and maintenance, land use and permitting, environmental planning, construction, and community outreach. We look forward to building the projects needed to reduce wastewater backups in South Park.