

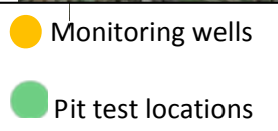
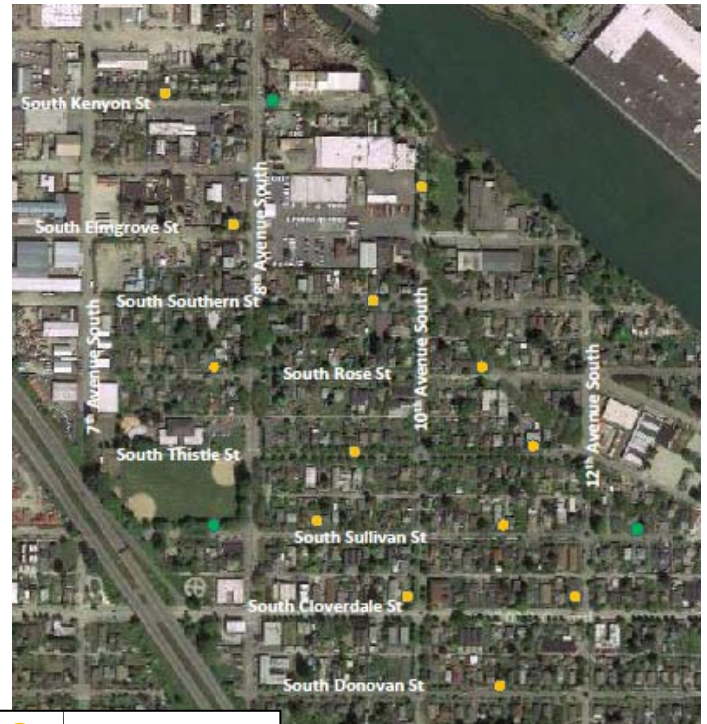


Well installation in your neighborhood beginning as early as February 6

King County crews will be working in your neighborhood beginning as early as Thursday, February 6. Neighbors will see two activities – the installation of shallow groundwater monitoring wells and a series of “pit” tests. The groundwater monitoring wells will provide information about soil and groundwater conditions, and the pit tests will provide information about how well water soaks into the ground. This information will inform the design of future King County sewer projects.

What you can expect

- Crew, trucks and drilling equipment in the street and public right-of-way between the curb and the sidewalk
- Wells drilled 12-16 inches diameter, up to 10 feet deep
- Pit test holes 4 feet wide by 6 feet long and four feet deep
- Increased noise on site
- Temporary parking restrictions near well and pit test locations
- Work hours weekdays from 8:00 a.m. to 4:00 p.m.
- Up to five days to complete all work –two days of work are planned for the first week of February, and three days of work will occur the following week
- Work areas will be restored
- Occasional equipment on site after wells are drilled to monitor and sample water levels
- All work will occur in public right-of-way



Los contratistas del condado de King estarán trabajando pronto en su área. Puede que usted note su labor y que esto afecte su rutina diaria. Si tiene alguna pregunta o inquietud, tenga a bien de contactarse con Kristine Cramer, en el número que aparece debajo. Se le puede proporcionar un intérprete sin cargo.

景郡承辦商將會很快在您的範圍內工作。您可能會注意到他們的工作，因為他們的工作會擾亂您的日常生活模式。若您有疑問或顧慮，請撥打以下電話號碼，聯絡 Kristine Cramer。我們會為您提供免費的傳譯服務。

Nhà thầu King County sẽ sớm làm việc trong khu vực của bạn. Bạn có thể thấy công việc này và nó có thể phá vỡ thói quen hàng ngày của bạn. Nếu bạn có câu hỏi hoặc quan tâm, xin vui lòng liên hệ với Kristine Cramer theo số dưới đây. Một thông dịch viên có thể được cung cấp cho bạn miễn phí.

For more information contact Kristine Cramer at: 206-477-5415 or via email: Kristine.cramer@kingcounty.gov

ALTERNATIVE FORMATS AVAILABLE
206-477-5371 / 711 (TTY Relay)