



May 2022

## Soil testing near 1st Avenue South Bridge Starting week of May 16

King County Wastewater Treatment Division will build a wastewater and stormwater storage tank near the 1st Avenue South Bridge to reduce combined sewer overflows into the Duwamish River. Soon, crews will conduct soil sampling and groundwater testing near the future storage tank site to better understand below-ground conditions (*see map at right*).



In early May, crews will mark the locations of existing utilities and sample locations with paint to prepare for groundwater and soil testing. As early as May 16, crews will use a truck- or track-mounted drill rig, like the one pictured at right, to collect soil samples and construct groundwater monitoring wells. Once drilling is complete, crews will restore the surrounding surface.



### What you can expect

- Work hours 7 a.m. to 6 p.m. on weekdays during May and June, approximately 6 workdays total
- One drill rig and up to four service vehicles on site
- Noise and slight vibrations during work hours, including engine noise and periodic hammering
- Soil and water will be stored in steel drums on site while work is ongoing
- Occasional truck traffic accessing the site during work hours
- Crews returning to take readings at the site quarterly for at least the next 9 months; that work will not involve noise, vibration, or traffic impacts

**Please watch for equipment and signs in the area, travel slowly to stay safe and follow direction from flaggers.**

**Alternative formats available** Call 206-477-5371 or TTY:711

Translation services available upon request | Servicios de traducción disponibles | Nêu yêu cầu dịch vụ thông dịch

## About the project

Like many cities around the country, older parts of King County's sewer system use the same pipes to carry both sewage and stormwater to a treatment plant. During storms, the pipes can fill with stormwater that runs off roofs, driveways, and streets. When the system is overwhelmed, it is designed to overflow to rivers, lakes, and the Puget Sound. These events are called Combined Sewer Overflows, or CSOs. Even though CSOs help prevent backups into homes and businesses, they pose a risk to public health and the environment.

Over the past several years, King County has been planning a project to reduce CSOs from the South Park drainage basin into the Duwamish River to no more than one overflow per year on average. To accomplish this, King County is designing a storage tank near the 1st Avenue bridge.

The storage tank will hold stormwater and wastewater during large storms, which will prevent raw sewage from overflowing into the Duwamish River. After the storm, the water will flow to West Point Treatment Plant for cleaning.

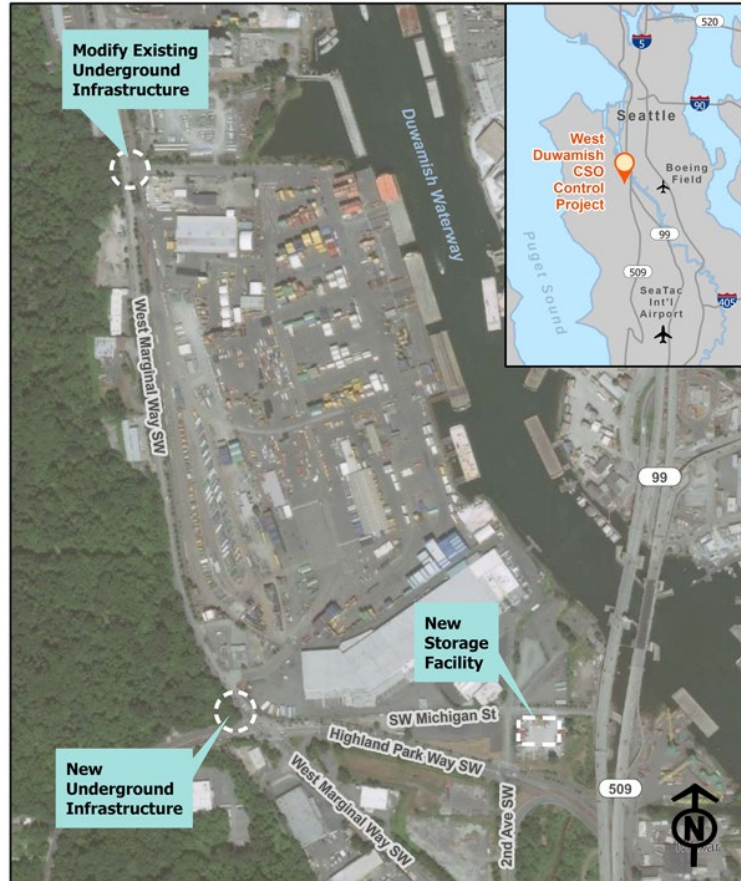
## Timeline

The project is in the design phase, with construction estimated to begin in 2025. King County will provide opportunities for the public to provide input as design progresses.

## For more information:

**Contact** Kristine Cramer at 206-477-5415 or [kristine.cramer@kingcounty.gov](mailto:kristine.cramer@kingcounty.gov)

**Visit the project Web page** at [kingcounty.gov/westduwamish-cso](http://kingcounty.gov/westduwamish-cso)



**Alternative formats available** Call 206-477-5371 or TTY:711

Translation services available upon request | Servicios de traducción disponibles | Nềuyêu cầu dịch vụ thông dịch