

WEST DUWAMISH WET WEATHER STORAGE FACILITY



King County

Protecting Our Waters

Doing our part on rainy days

July 2022

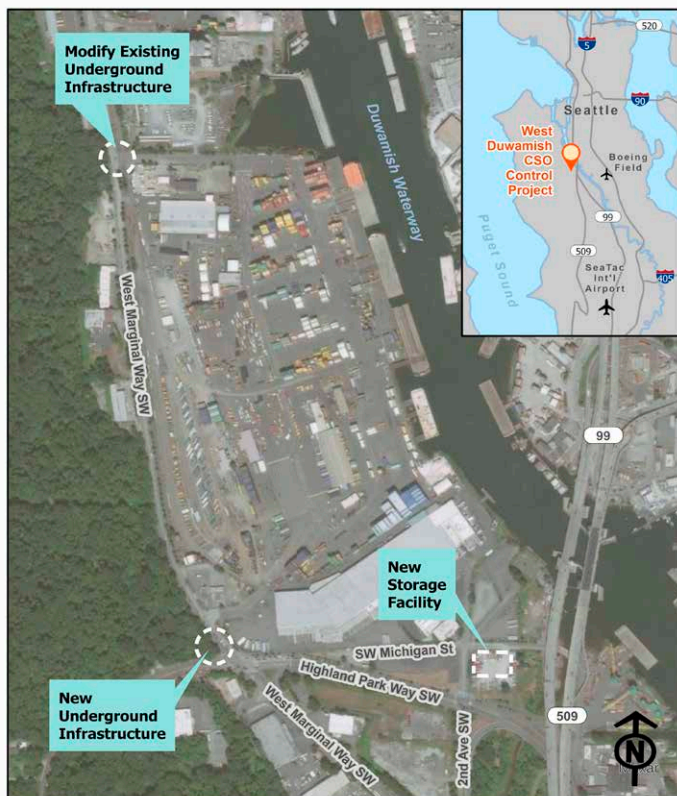
King County is committed to a healthy Duwamish River

Design is progressing on the storage facility, and we want to hear from you

King County will build a 1.25-million-gallon underground storage tank to reduce overflows and pollution into the Duwamish River. Located near the First Avenue Bridge, the tank will hold stormwater and wastewater that currently overflows into the Duwamish River during large storms. The water in the tank will then flow to the West Point Treatment Plant for treatment before it is released into Puget Sound.

The project is in the design phase. The site layout and general features for the storage tank and associated equipment have been determined, but we are seeking community input to shape the design details of things including fencing, landscaping, and building architecture.

We expect to start construction in 2025.



Our commitment to sustainability

The storage tank and surrounding site will incorporate many sustainable elements. Some examples of design elements already added include:

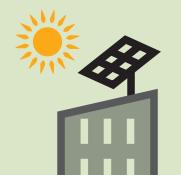
New trees will:

- Absorb and filter stormwater that falls on the site
- Improve air quality
- Create habitat for birds, pollinators and other wildlife



Solar panels on the roof will:

- Provide energy to power operations
- Reduce our dependence on fossil fuels and the regional electricity grid



Rain gardens will:

- Mimic the wetlands and forests that were here before development
- Collect and filter pollution from stormwater that runs off the building's roof and paved areas



Visit our online open house to learn more about other sustainability features this site will have.

www.kingcounty.gov/westduwamish-cso

Our commitment to our local communities

King County continues to meet with agencies and community groups to learn about current priorities and projects already happening within the South Park & Highland Park neighborhoods. Our team has also met with local businesses near the site to learn about their concerns and priorities for the area. **We want to learn directly from you what your community needs from this project.**

How should the project site look?

Many design elements not only support the operations of this new facility, but play a role in enhancing the environment, and improving how the site looks. Share your thoughts through our survey on:

- **Building materials** – you can help us choose siding materials, color and style.
- **Landscaping** – we will include plants that can adapt to our changing climate, but you can help us decide on planting choices.
- **Fencing** – this site requires fencing for safety, and you can help us decide what the fence will look like.
- **Habitat features** – we have an opportunity to support migrating birds, local wildlife, pollinators and a healthy Duwamish ecosystem. What should we include?

Supporting projects and building connections in the neighborhood -

King County is committed to building clean water infrastructure that provides benefits to the community and minimizes project burdens on the surrounding neighborhoods. Our commitment includes river clean up, the Georgetown Wet Weather Treatment Station, RainWise and GSI Mini Grants, and addressing flooding issues in South Park.

Through this project, our team will seek opportunities to support community-driven initiatives in the nearby neighborhoods. After talking to community leaders and partners, we have identified some high priority neighborhood goals around water quality, river and community connections, and economic support.



Share with us what matters to you!

Head to our online open house to learn more: www.kingcounty.gov/westduwamish-cso

Or head straight to the survey to provide your thoughts: www.publicinput.com/wduwamish



Please share your thoughts with us.

Do you have a project in mind? Ideas we have heard and examples of those include:

- **Greening the neighborhood** – increasing trees, funding rain garden or cistern projects, and garbage pickups and shoreline restoration
- **Building career pathways** – hosting job fairs and tours, connecting youth and adult jobseekers to opportunities in clean water careers.
- **Creating community connections** – educational signs about the river history, self-guided and hosted educational tours, and wayfinding from South Park & Highland Park to the site and linking river restoration sites to each other.

Our goal is to take your input and find creative ways to bring money and resources to the projects that matter to you. Please add your ideas in our short survey through the link below.

Talk to us this summer!

Our project team will be in your community and online to hear from you and share information.

Ways to get connected:

- Visit our online open house
- Our team will be in the neighborhood this summer and fall. We will let community members know where we will be through our email list. Join to find out more and receive project updates.
- Local Farmers Markets
- Request a community briefing
- Call us
- Email us
- Follow King County WTD on social media





King County

Department of Natural Resources and Parks
Wastewater Treatment Division
201 S. Jackson St., KSC-NR-0505
Seattle, WA 98104-3855



PRSR STD
US POSTAGE
PAID
SEATTLE, WA
PERMIT NO. 836

King County is building a storage tank near South Park to protect the Duwamish River during large storms. Read inside about our commitment to water quality and your community.

El condado de King está construyendo un tanque de almacenamiento cerca de South Park para proteger al río Duwamish durante las grandes tormentas. Encuentre este comunicado en línea, en español.



Quận King đang xây dựng một bồn chứa nước gần South Park để bảo vệ Sông Duwamish trong những trận bão lớn. Xem bản tin này trực tuyến bằng Tiếng Việt.



金縣正在南方公園附近建造一個儲水箱，以在大風暴期間保護杜瓦米甚河。在線查找此發表的中文版。



金县正在南方公园附近建造一个储水箱，以在大风暴期间保护杜瓦米什河。在线查找此发表的中文版。



Alternative formats available
206-477-5371 or TTY relay: 711
Translation services available upon request

**If you have questions call
Amelia Bahr at 206-263-9275.**

**An interpreter will be provided
at no charge.**



King County

Protecting Our Waters

Doing our part on rainy days

West Duwamish Wet Weather Storage Facility Timeline

2013	2014	2015	2016	2017	2018	2019	2020	2021	2022	2023	2024	2025	2026	2027
			Planning		Design						Construction			
RainWise														