

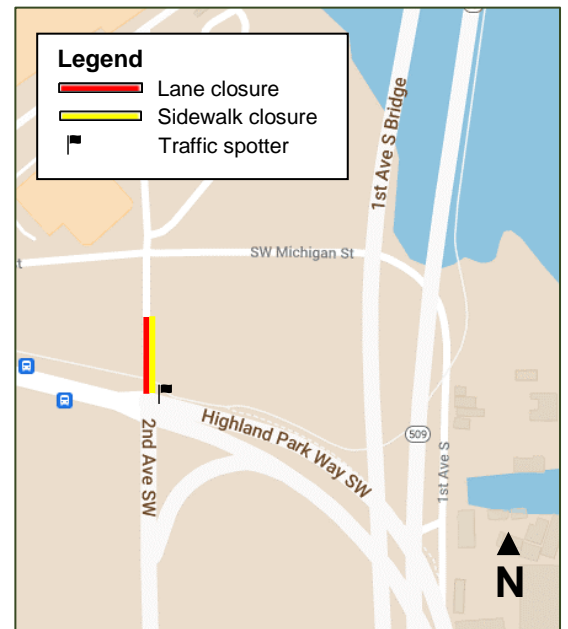


October 2022

## Lane closure on 2nd Avenue SW October 19 and 20

King County Wastewater Treatment Division is planning to build a wastewater and stormwater storage tank near the 1st Avenue South Bridge to reduce Combined Sewer Overflows into the Duwamish River (*see map at right*).

As part of the design process, in mid-October, crews will conduct a 24-hour pump test and will discharge water to an approved maintenance hole in the northbound lane of 2nd Avenue SW. The northbound lane will be closed during the pumping test and traffic will use the turn lane to travel north on 2nd Avenue SW. The sidewalk on the east side of 2nd Avenue SW will be closed, and signs will be provided to direct pedestrians safely across the street.



### What you can expect

- Work hours on site will be 7 a.m. to 6 p.m. on weekdays during the week of October 17, with one supervised overnight work period during a 24-hour pump test scheduled for October 19 and 20. The lane closure on 2<sup>nd</sup> Avenue SW will only occur during the 24-hour pump test on October 19 and 20.
- Up to four service vehicles on site; occasional truck traffic accessing the site during work hours.
- Noise and slight vibrations during work hours, including engine noise and periodic hammering; overnight diesel generator noise for one day during the 24-hour pump test.
- Water will be stored in steel drums on site while work is ongoing.
- One traffic flagger will be present on 2<sup>nd</sup> Avenue SW during the 24-hour pump test.

**Please watch for equipment and signs in the area, travel slowly to stay safe and follow direction from flaggers.**

**Alternative formats available** Call 206-684-1280 or TTY:711

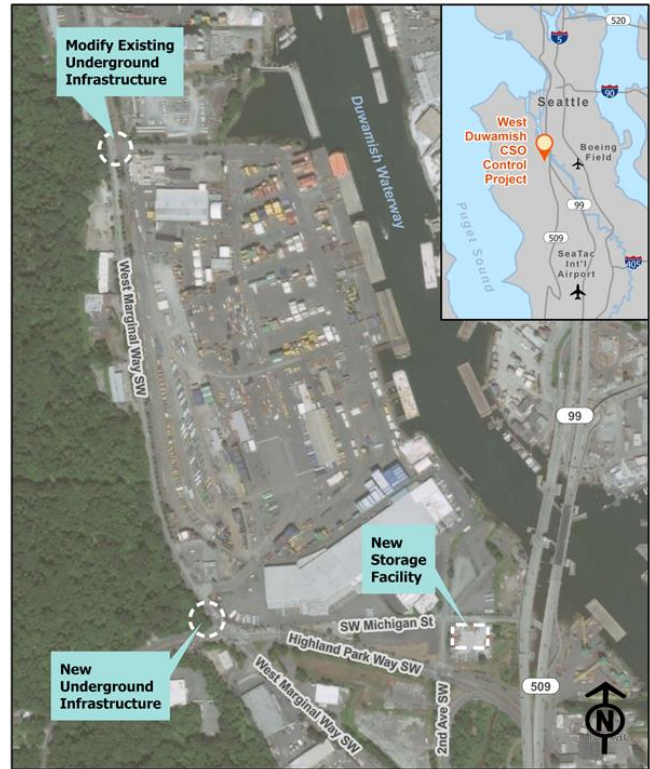
Translation services available upon request | Servicios de traducción disponibles | Nêu yêu cầu dịch vụ thông dịch

## About the project

Like many cities around the country, older parts of King County's sewer system use the same pipes to carry both sewage and stormwater to a treatment plant. During storms, the pipes can fill with stormwater that runs off roofs, driveways, and streets. When the system is overwhelmed, it is designed to overflow to rivers, lakes, and the Puget Sound. These events are called Combined Sewer Overflows, or CSOs. Even though CSOs help prevent backups into homes and businesses, they pose a risk to public health and the environment.

Over the past several years, King County has been planning to reduce CSOs from the South Park drainage basin into the Duwamish River to no more than one overflow per year on average. To accomplish this, King County is designing a storage tank near the 1st Avenue bridge. The storage tank will hold stormwater and wastewater during large storms, which will prevent raw sewage from overflowing into the Duwamish River. After the storm, the water will flow to West Point Treatment Plant for cleaning.

The project is in the design phase, with construction estimated to begin in 2025. King County will provide opportunities for the public to provide input as design progresses.



### For more information:

- Contact Kristine Cramer at 206-477-5415 or [kristine.cramer@kingcounty.gov](mailto:kristine.cramer@kingcounty.gov)
- Follow the link below or scan the QR code to the right to visit our online open house: [kingcounty.gov/westduwamish-cso](https://kingcounty.gov/westduwamish-cso)



El condado de King está construyendo un tanque de almacenamiento cerca de South Park para proteger al río Duwamish durante las grandes tormentas. Para obtener más información, llame al 206-477-5415, deje un mensaje con su número de teléfono e indique su idioma. Se proporcionará un intérprete sin costo.