

# WEST DUWAMISH WET WEATHER STORAGE FACILITY

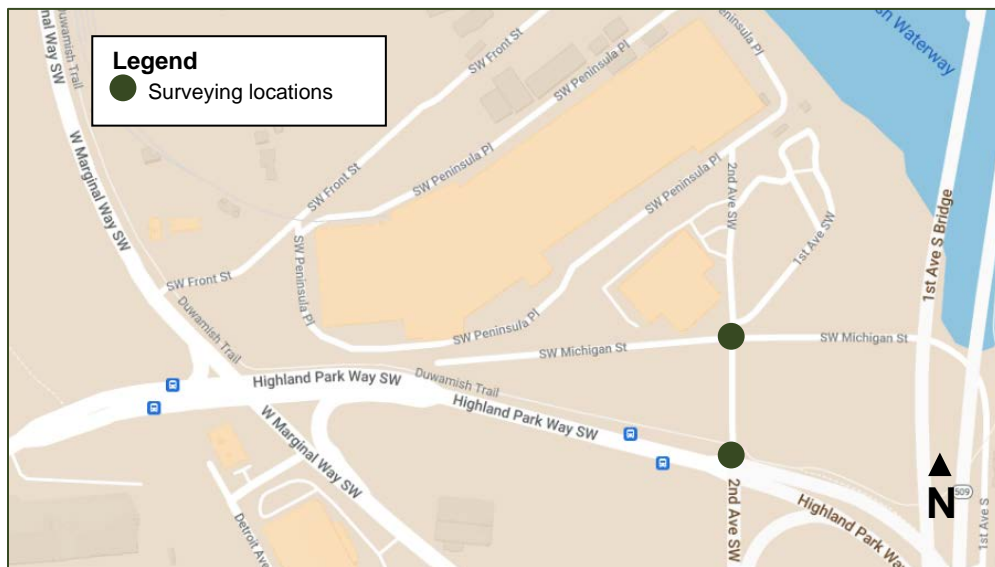


 **King County**  
**Protecting Our Waters**  
*Doing our part on rainy days*

October 2022

## Surveying near 1st Ave S Bridge beginning November 2

King County Wastewater Treatment Division is planning to build a wastewater and stormwater storage tank near the 1st Avenue South Bridge to reduce Combined Sewer Overflows into the Duwamish River. Starting as early as November 2, crews will spend up to three days surveying in two intersections near the future storage tank site to better understand the locations of utility lines, including sewer, power, water, telephone, and gas lines.



### What you can expect

- Work hours 7:30 a.m. to 5 p.m. daily for up to three days, starting as early as Wednesday, November 2
- Up to four service vehicles on site
- Noise during work hours, including engine noise

**Please watch for equipment and signs in the area, travel slowly to stay safe and follow direction from flaggers.**

**Alternative formats available** Call 206-477-5371 or TTY:711

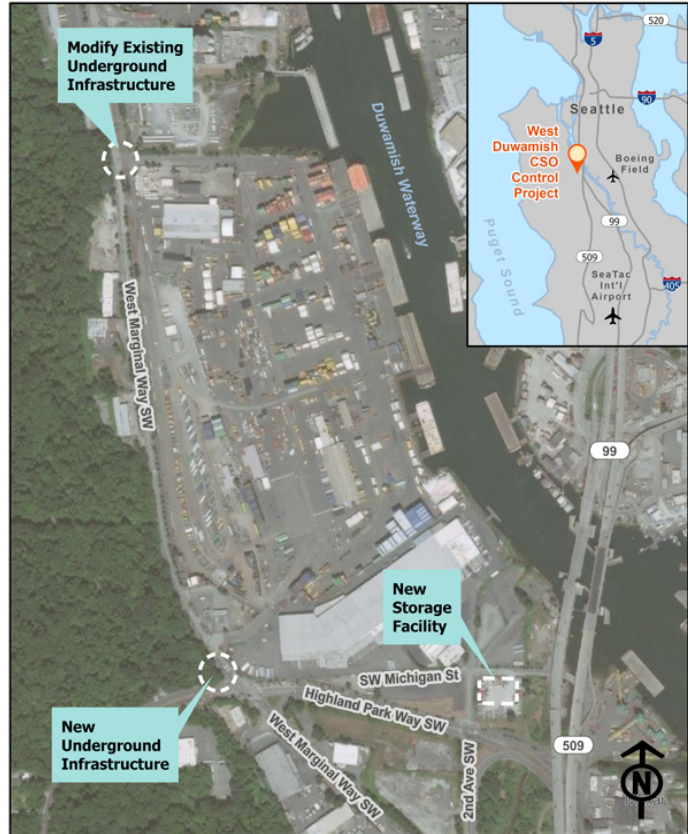
Translation services available upon request | Servicios de traducción disponibles | Nếu yêu cầu dịch vụ thông dịch

## About the project

Like many cities around the country, older parts of King County's sewer system use the same pipes to carry both sewage and stormwater to a treatment plant. During storms, the pipes can fill with stormwater that runs off roofs, driveways, and streets. When the system is overwhelmed, it is designed to overflow to rivers, lakes, and the Puget Sound. These events are called Combined Sewer Overflows, or CSOs. Even though CSOs help prevent backups into homes and businesses, they pose a risk to public health and the environment.

Over the past several years, King County has been planning to reduce CSOs from the South Park drainage basin into the Duwamish River to no more than one overflow per year on average. To accomplish this, King County is designing a storage tank near the 1st Avenue bridge. The storage tank will hold stormwater and wastewater during large storms, which will reduce risk of raw sewage from overflowing into the Duwamish River. After the storm, the water will flow to West Point Treatment Plant for cleaning.

The project is in the design phase, with construction estimated to begin in 2025. King County will provide opportunities for the public to provide input as design progresses.



### For more information:

- Contact Kristine Cramer at 206-477-5415 or [kristine.cramer@kingcounty.gov](mailto:kristine.cramer@kingcounty.gov)
- Follow the link below or scan the QR code to the right to visit our online open house: [kingcounty.gov/westduwamish-cso](https://kingcounty.gov/westduwamish-cso)



El condado de King está construyendo un tanque de almacenamiento cerca de South Park para proteger al río Duwamish durante las grandes tormentas. Para obtener más información, llame al 206-477-5415, deje un mensaje con su número de teléfono e indique su idioma. Se proporcionará un intérprete sin costo.