

# Be Stormwater Savvy



**King County**

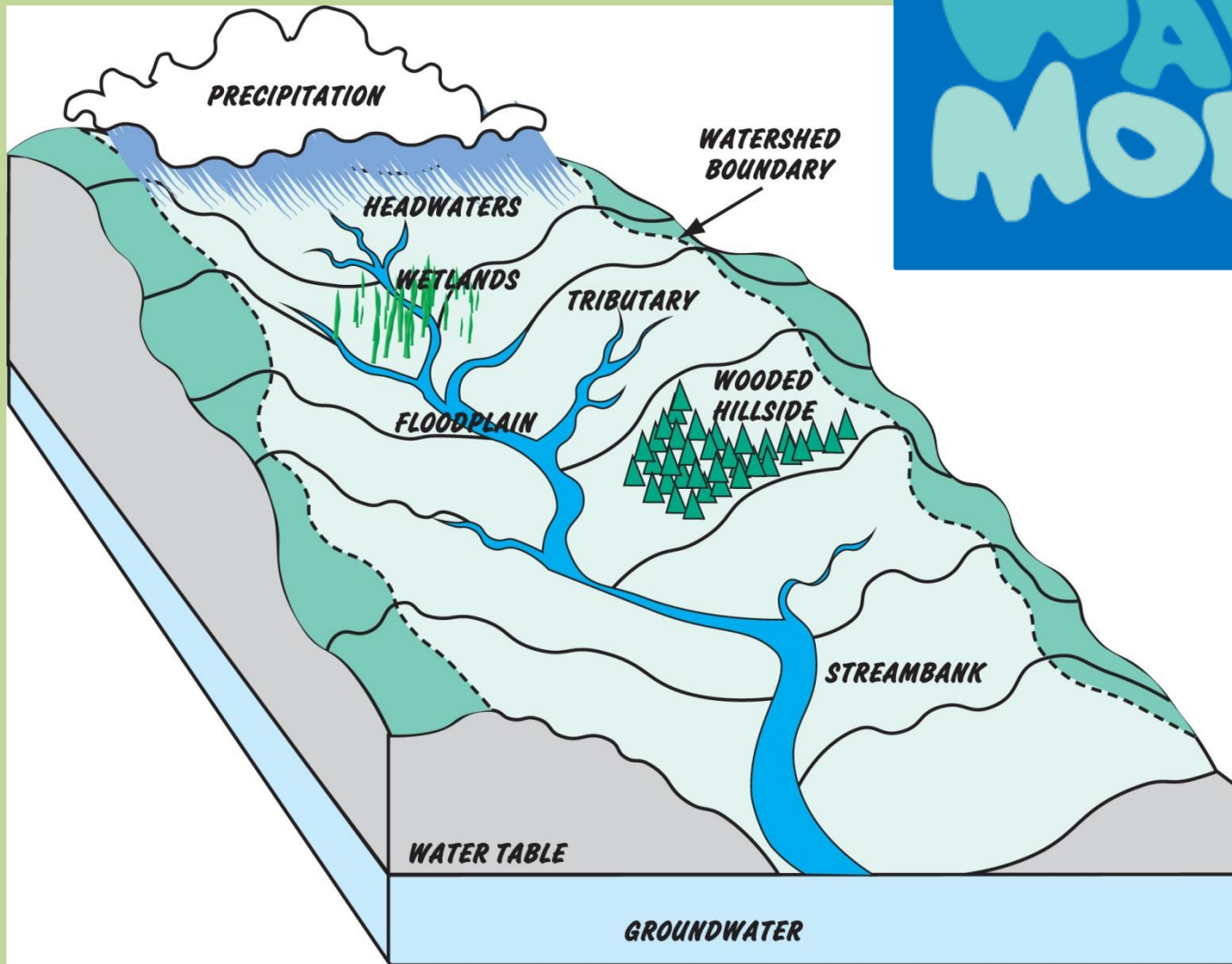
Department of Natural Resources and Parks  
**Wastewater Treatment Division**



**STORMWATER**

# WATERSHED

WATER  
MOVES





**PERVIOUS**

**IMPERVIOUS**



# WATER CYCLE

Evaporation  
from Oceans,  
Lakes & Streams

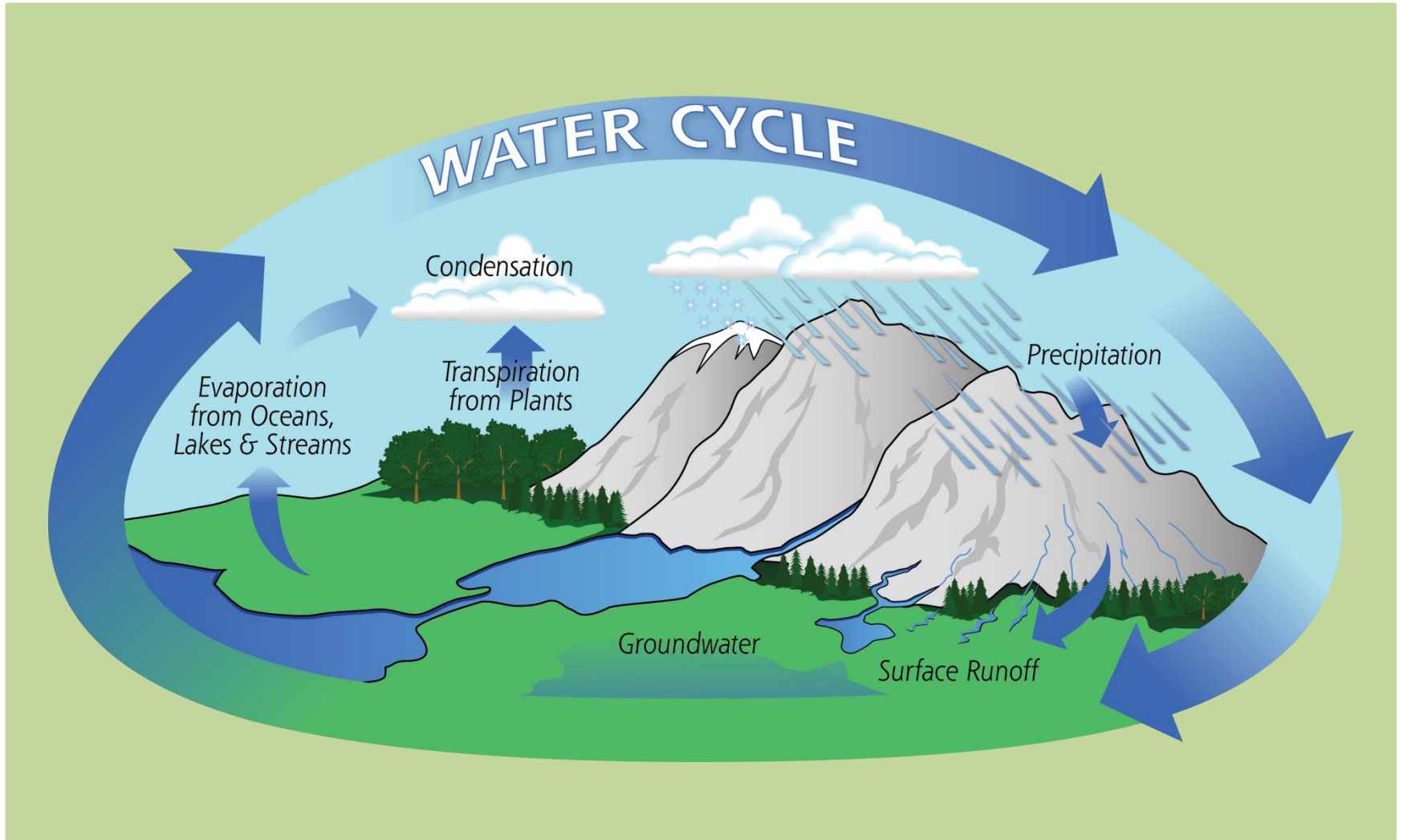
Condensation

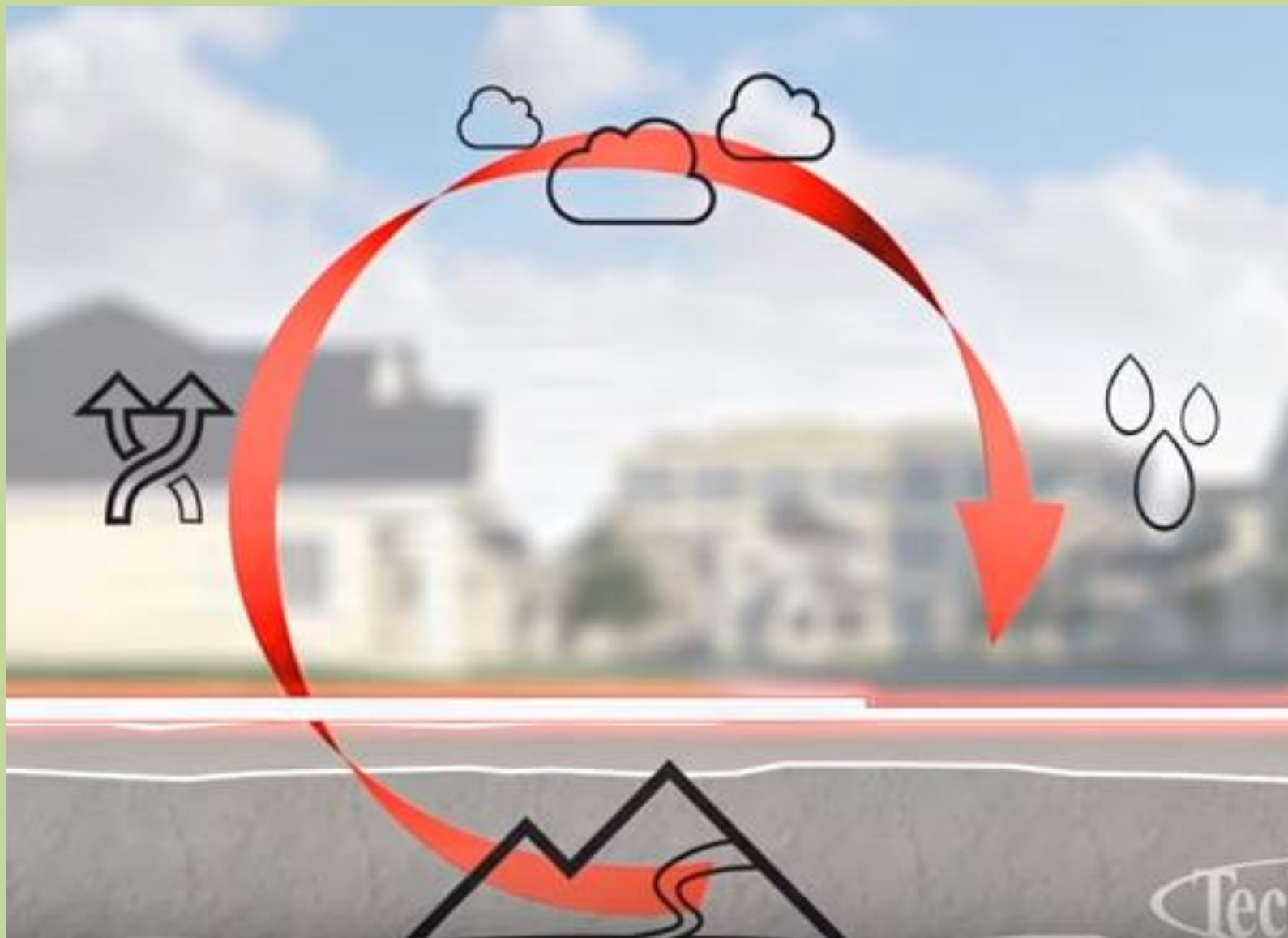
Transpiration  
from Plants

Precipitation

Groundwater

Surface Runoff

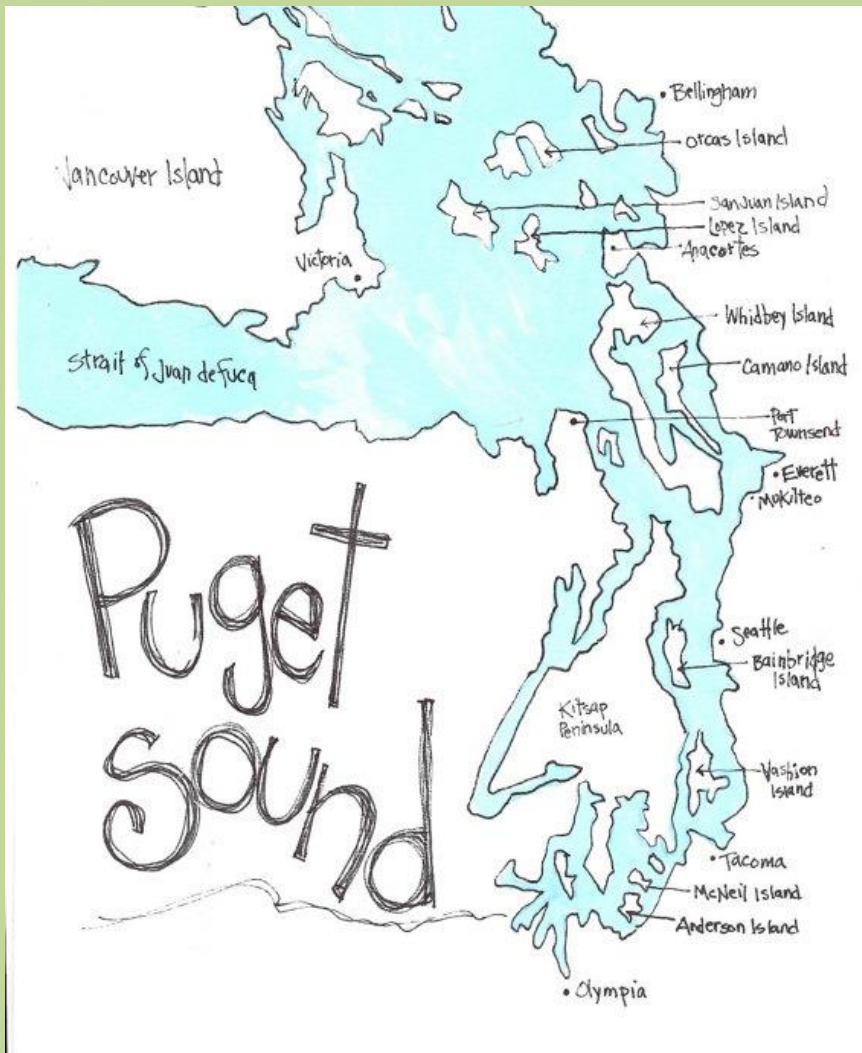




# What is in Stormwater?



# Where does stormwater go?



# What are the solutions?

- What can **YOU** do?
- What can **WE BOTH** do?
- What is King County Wastewater doing?

# What Can YOU Do?

Car Wash



Pick up pet waste



Dispose of Trash  
Properly

# What Can we **BOTH** do?



**Plants & Trees**



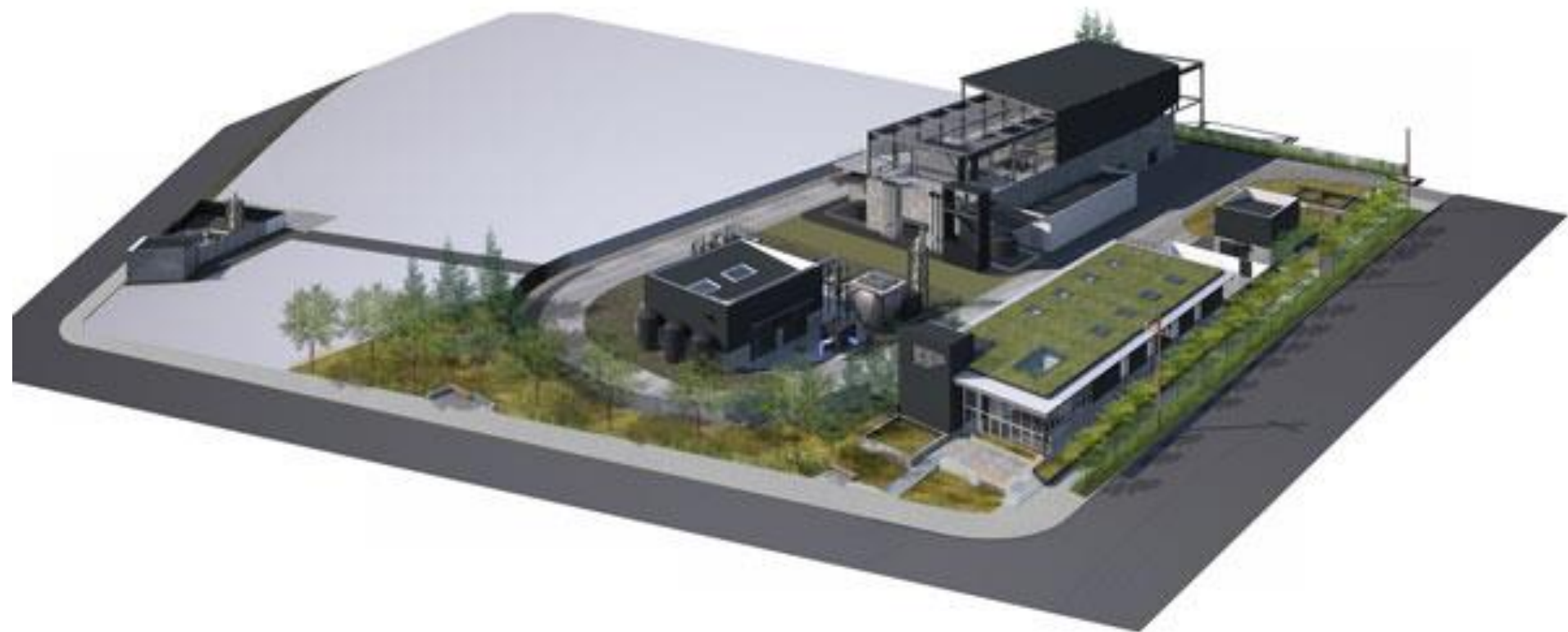
**Rain Gardens**



**Rain Barrel and Cisterns**

# What is King Count doing?

Georgetown Wet Weather Treatment Station



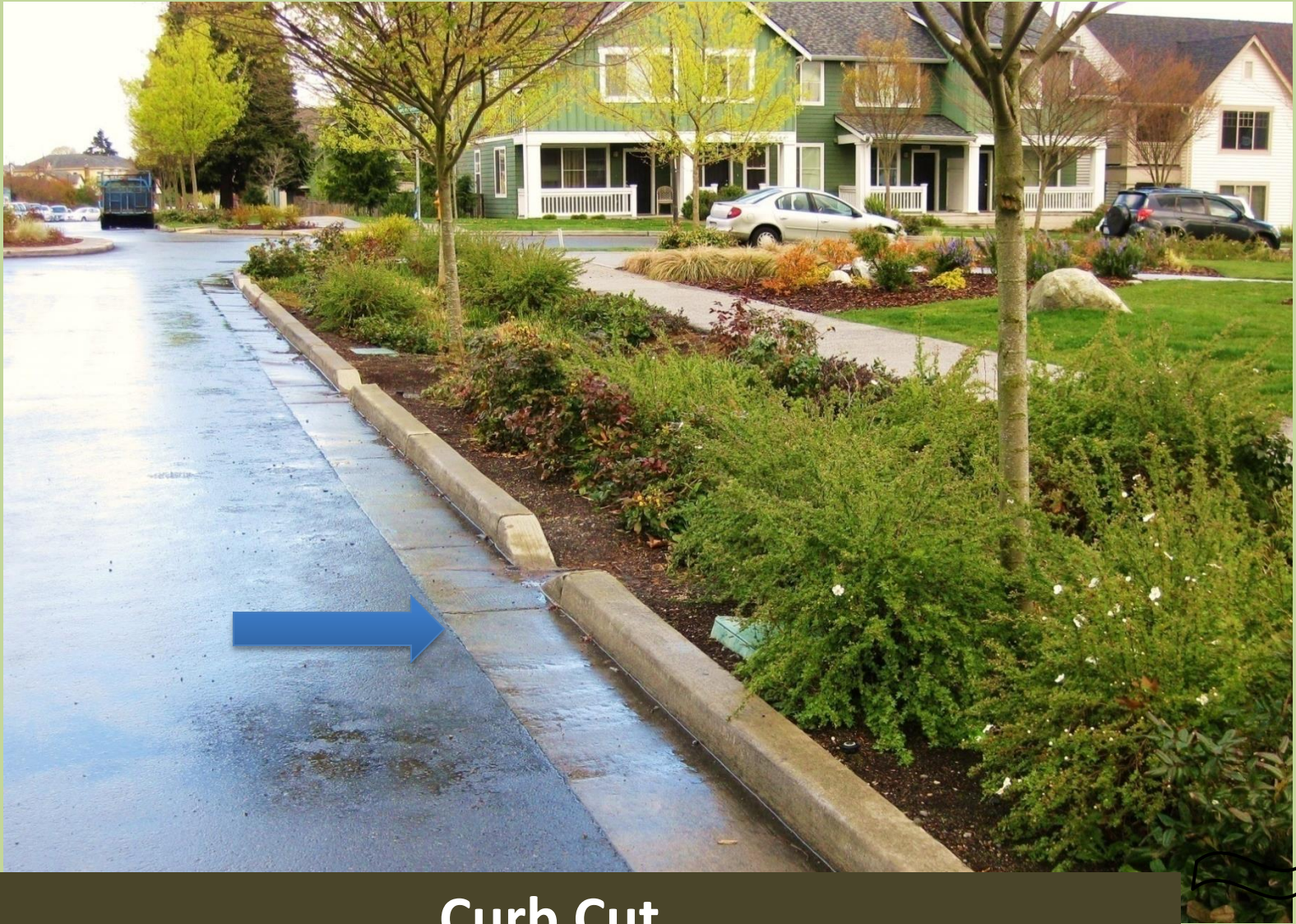


## Green Roof

What if all the roofs in the city were green?



**Bioswale**

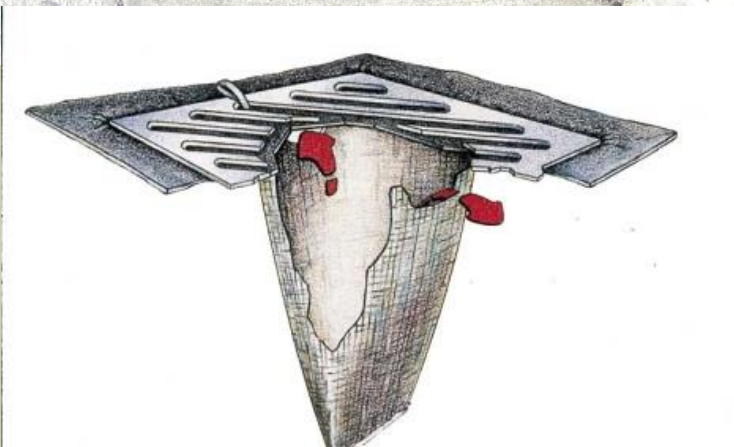


**Curb Cut**



## Pervious pavement and Pavers

How could pervious pavement help with stormwater problems at your school? Where would you put it?



**Storm Drain Filters**

# What did you Learn?

