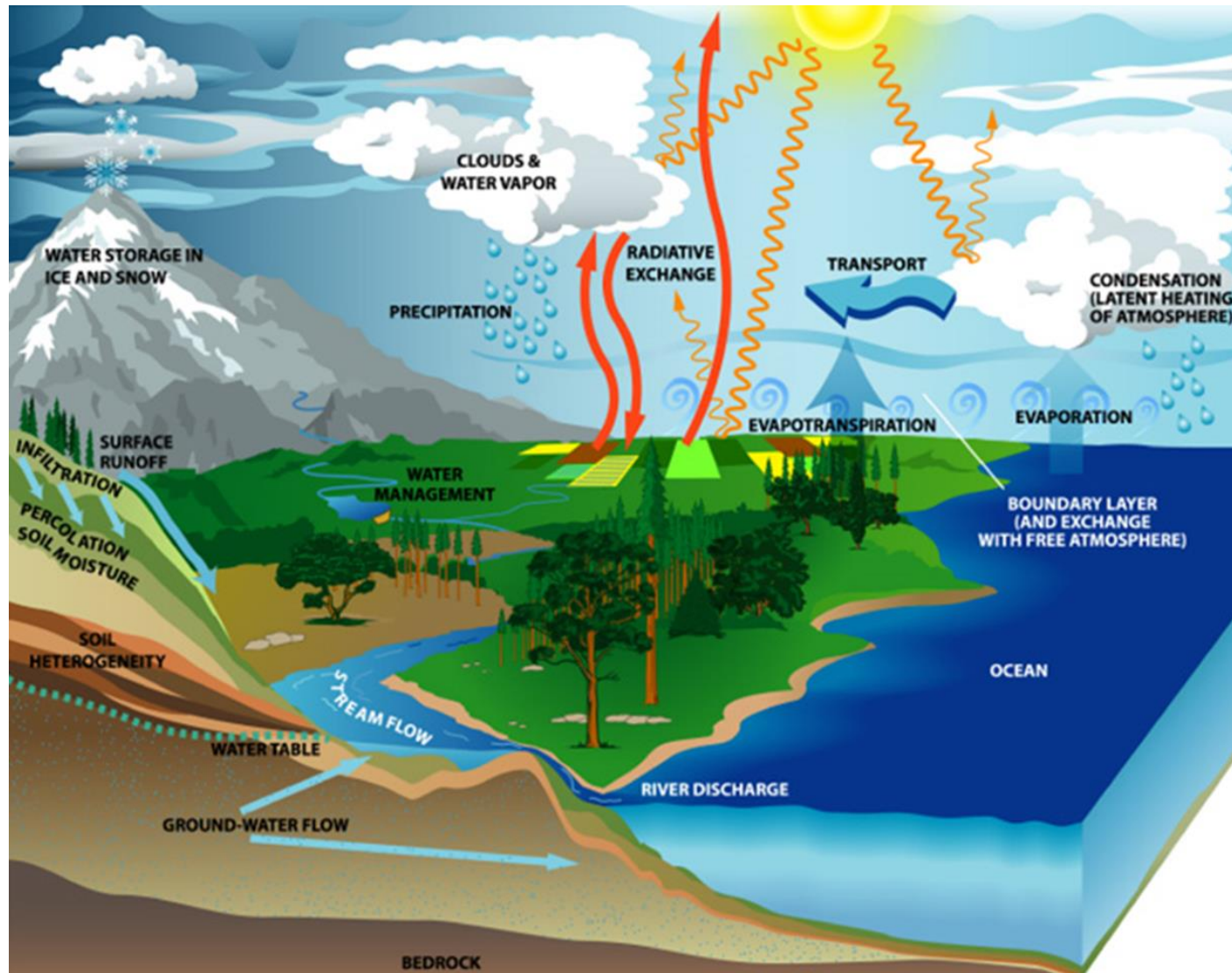


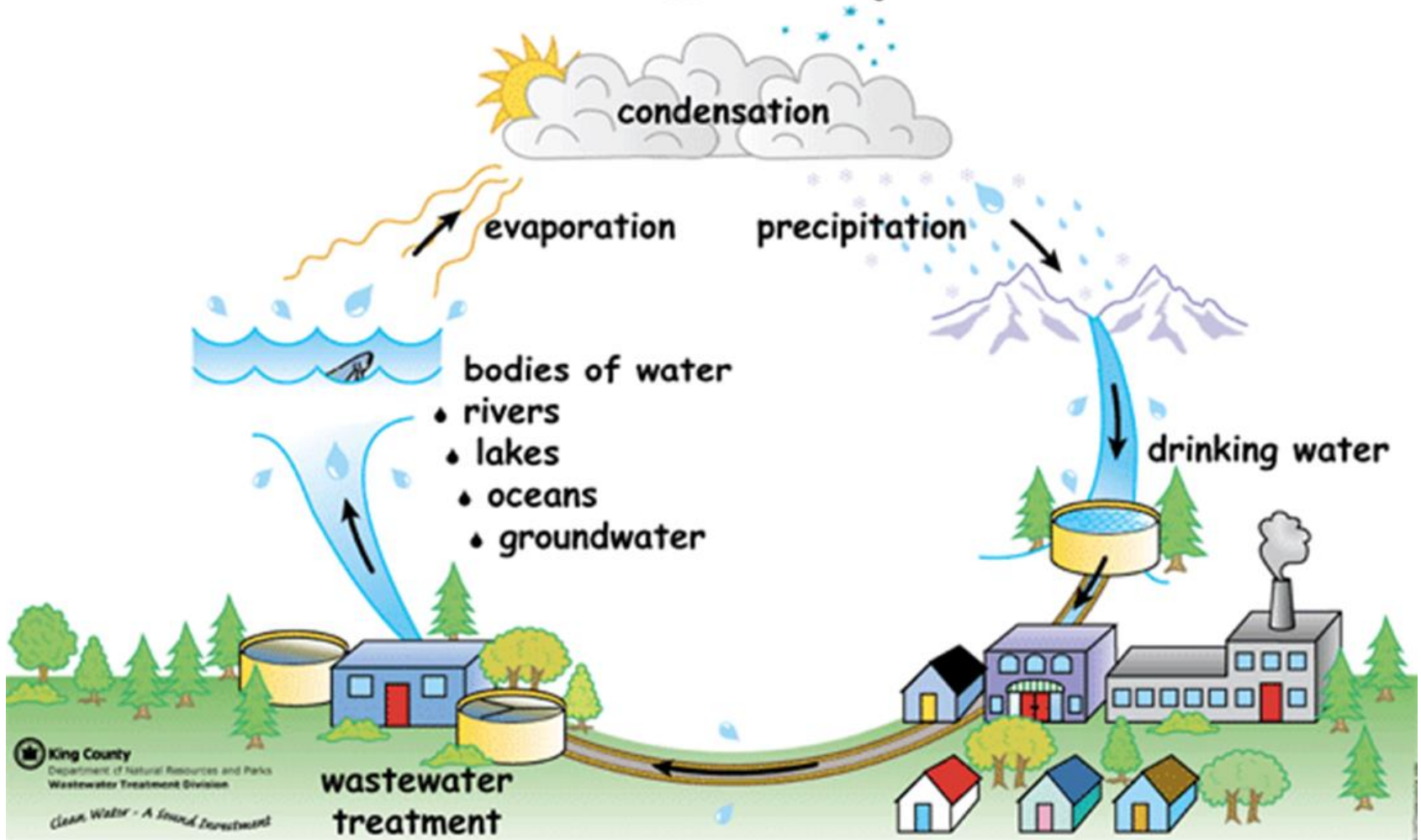
# Wastewater 101



# The Water Cycle



# The H<sub>2</sub>O Cycle





# Where does wastewater come from?



# What's in wastewater?

**1. TRASH** → “Flushable” wipes, feminine products, disposable diapers

**2. ORGANICS** → Poop, Pee, Puke, food, and F.O.G.

**3. CHEMICALS** → Soaps, cleaning products, medicines, and lotions

# Wastewater Treatment System



# What's in wastewater?

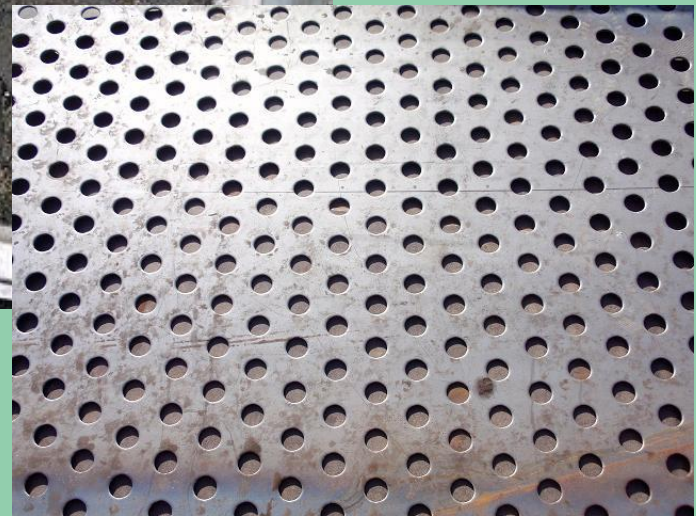
1. TRASH → “Flushable” wipes, feminine products, disposable dippers

2. ORGANICS → Poop, Pee, Puke, food, and F.O.G.

3. CHEMICALS → Soaps, cleaning products, medicines, and lotions



# How do we remove the trash?





# What does Wastewater Trash look like?



# Impact of Trash in the Treatment Process





# Impact of Trash in the System

- Flushable wipes are not necessarily flushable





# What's in wastewater?

1. TRASH → “Flushable” wipes, feminine products, disposable dippers

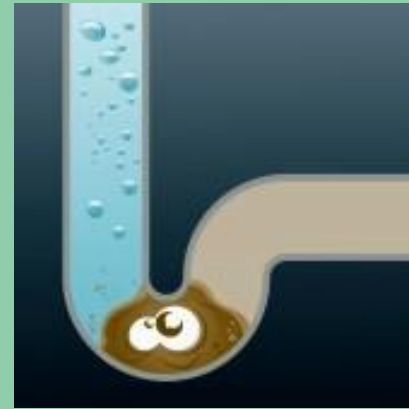
2. ORGANICS → Poop, Pee, Puke, food, and F.O.G.

3. CHEMICALS → Soaps, cleaning products, medicines, and lotions

# Organics



# Impact of Fats, Oils, Grease (F.O.G.)

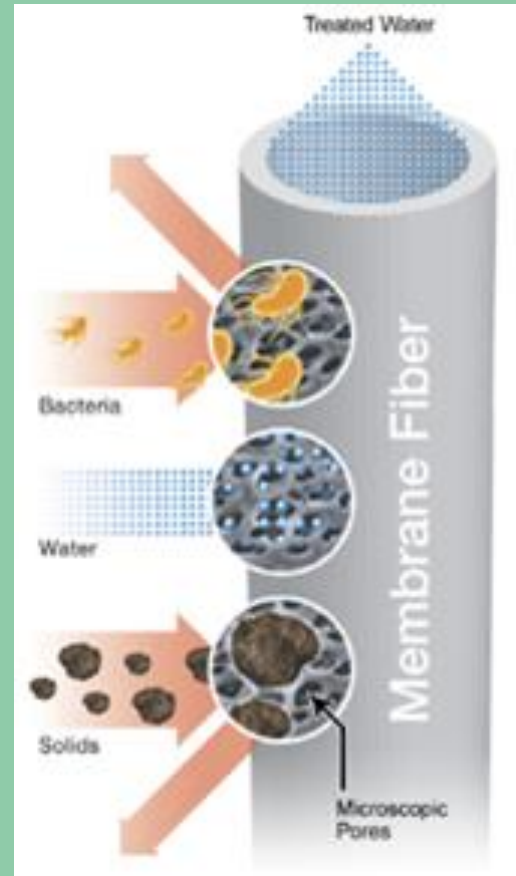


Grease clogs in sewer pipes  
which result in overflows





# Membrane Filters



# What's in wastewater?

1. TRASH → “Flushable” wipes, feminine products, disposable dippers

2. ORGANICS → Poop, Pee, Puke, food, and F.O.G.

3. CHEMICALS → Soaps, cleaning products, medicines, and lotions

# Solutions: What can you do?

- The 4 P's:
  - Pee
  - Poop
  - Puke
  - Toilet Paper





# Solutions: What can you do?

Anything that's  
not one of the **4 Ps**  
(**p**ee, **p**oop, **p**uke or  
toilet **p**aper) should  
go in me!

**TRASH**



Facial wipes



Grease



Tampons and pads



Hair



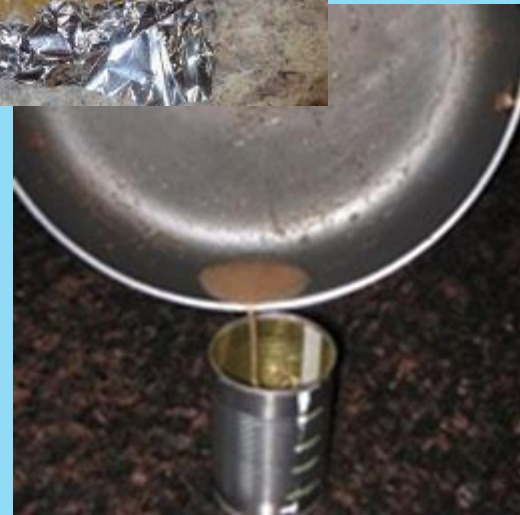
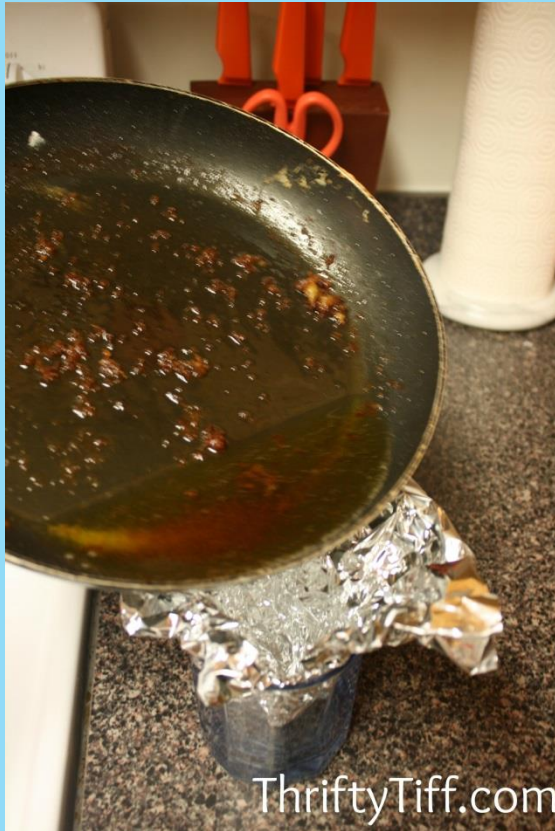
Cleaning wipes



Disposable diapers,  
nursing pads & baby wipes



# Fats, Oils, and Grease (F.O.G.): Throw it away or compost it



# Person Care products





