

BRIGHTWATER TREATMENT PLANT *NEWS*



King County
Department of
Natural Resources and Parks
Wastewater Treatment
Division

Spring 2023

Welcome to the Brightwater Treatment Plant!

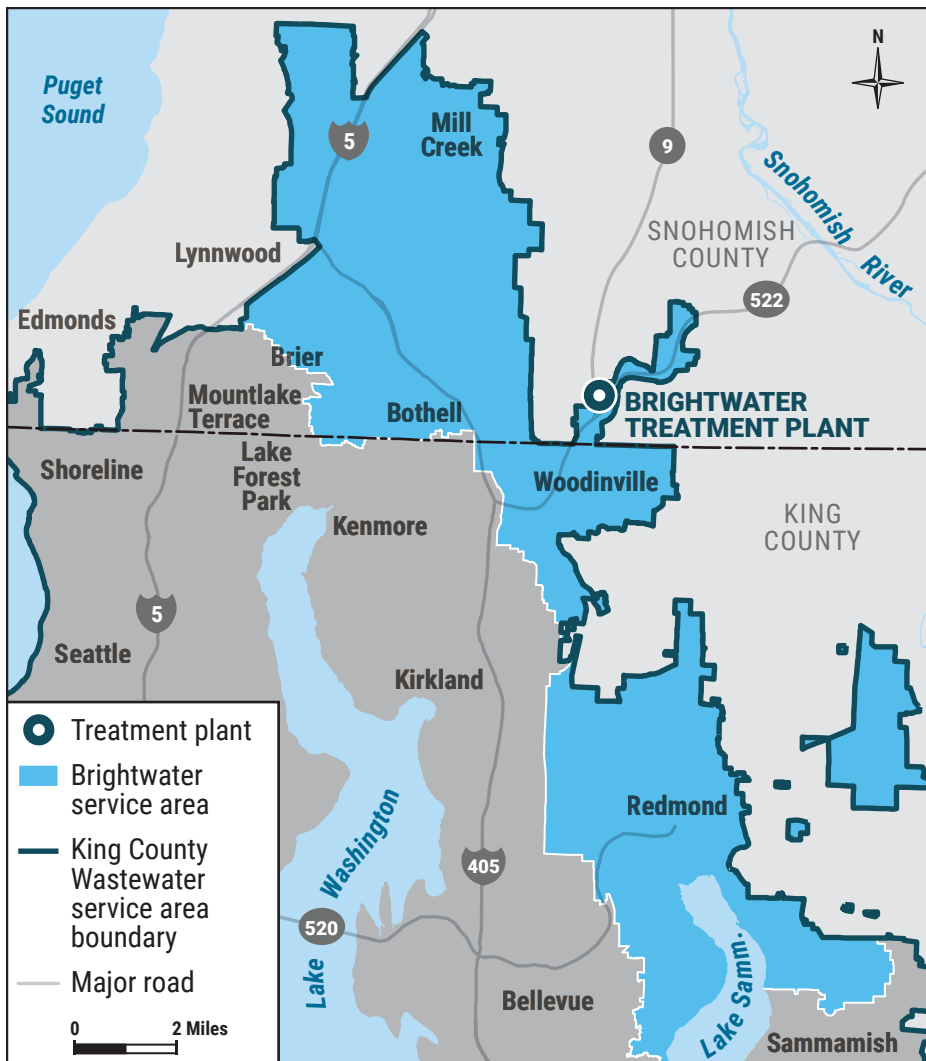
CLEANING WASTEWATER IN YOUR COMMUNITY

The Brightwater Treatment System is an essential part of King County's wastewater treatment services. Wastewater is the water we use that goes down our drains. If you live, work, recreate, or visit north King County or south Snohomish County, your wastewater is most likely treated at the Brightwater Treatment Plant in Woodinville.

The Brightwater Treatment Plant uses advanced systems to treat wastewater, protecting public health and the environment. We recycle solids, water, and energy from the wastewater treated at Brightwater.

As your neighbor, Brightwater features public open space and a community center that includes an exhibit hall, classrooms, and learning labs. We invite you to keep up on what's going on at the treatment plant and on the trails.

DOES BRIGHTWATER TREAT YOUR DIRTY WATER?



Get to Know Brightwater

Did you know there is a regional wastewater treatment plant in the Woodinville area?

King County would like to re-introduce you to this state-of-the-art clean water facility in your community. We're reaching out to you to keep you informed about activities around the treatment plant and how you can engage with us.

Stay informed by signing up for email or text updates. Visit our website or scan this QR code.



[kingcounty.gov/
brightwater](https://kingcounty.gov/brightwater)

Turn the page to get a glimpse at what it's like to work in the plant and to plan your visit! >>>>

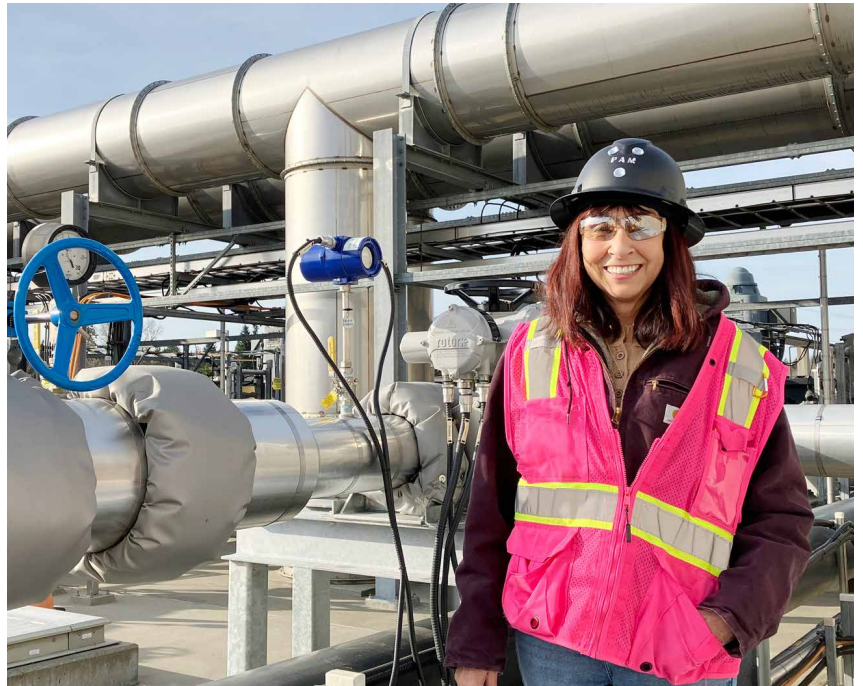
The Brightwater Treatment Plant service area spans more than five cities in north King County and south Snohomish County.

What did it take to become a woman operator at a wastewater treatment plant?

Ask Pam Restovic. Pam Restovic made history as a woman in the trades working as a wastewater operator in the early days of the Clean Water Act. Like many women at the time, Pam didn't envision this career path. But now, 37 years later, Pam is considered a trailblazer and mentor to other women and people of color entering a demanding field.

A NEW CHAPTER

One of Pam's most cherished moments was pushing the button to start wastewater flows to the new Brightwater Treatment Plant in 2011. She has worked there ever since as one of the essential employees that keep Brightwater running 24/7.



Senior Operator Pam Restovic stands next to equipment at the Brightwater Treatment Plant.

Read more about Pam!

Visit our clean water stories blog!

kingcountywtd.com



It's been so gratifying for me to see the Brightwater system come from nothing and become an operating treatment plant. That's something I worked my whole life for."

– Pam Restovic



What did it take to become a female operator at a King County wastewater treatment plant? Ask Pam Restovic.

wtdsocialmediakingcountygov / April 12, 2023



Pam Restovic made history as a woman in the trades, working as a wastewater operator in the early days of the Clean Water Act. This law set new regulations to protect our nation's waters from pollution and created new jobs across the country.



Public art

As you walk around Brightwater, you'll notice a lot of great public art inspired by local communities. You may be missing the longhouse element of *Grandfather's Wisdom* in the South Wetscape area. This striking artwork brings the history, perspectives, and culture of Coast Salish peoples to Brightwater. Artist Andrea Wilbur-Sigo is restoring the longhouse to increase the sculpture's longevity against the outdoor elements. The updated longhouse is expected to return to the site later this spring. Learn more: 4culture.org/public_art/grandfathers-wisdom/



© 2023 Andrea Wilbur-Sigo. *Grandfather's Wisdom*. Photo courtesy of the artist. From the King County Public Art Collection.

Ready to plan your visit?

Want to learn about how all of us can protect our waters? Check out the Brightwater Center (Monday – Thursday, 10 a.m. – 4 p.m.). We host tours of the Brightwater Treatment Plant and year-round educational events. Check out our website for more online resources, a full events calendar, and to sign up for a tour! kingcounty.gov/brightwatercenter

Want to get outside all year long? The Brightwater grounds sit on 70 acres of open space with three miles of public trails that connect visitors to native plants, forested areas, public art, and stormwater treatment landscapes. Our trail system is popular with families, dog walkers, birders, and runners, and is free and open daily for public use.

Need a way to get to Brightwater? The King County Metro Community Van is a rideshare program that helps community members share pre-arranged rides to local destinations like Brightwater. For more information, visit King County Metro's website or call your local coordinator at 425-352-5129 (free interpretation available). kingcounty.gov/communityvan



A King County engineer describes the role of digesters in the wastewater treatment process during a tour of the Brightwater Treatment Plant.

Sign up for updates to stay connected and learn more about upcoming projects and events:
kingcounty.gov/Brightwater



Learn more

Interested in learning more about the Brightwater Treatment Plant?

Check out our website to learn more about our state-of-the-art treatment process, how it supports sustainability initiatives, and more! Visit kingcounty.gov/brightwater.

You can also sign up for email or text updates.

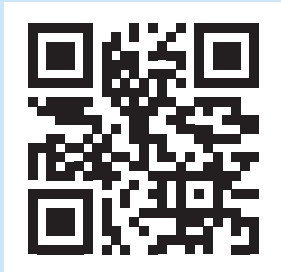


Para obtener los materiales traducidos, visite kingcounty.gov/Brightwater

请在 kingcounty.gov/Brightwater 翻译的资料。

請至 kingcounty.gov/Brightwater 檢視譯的資料。

Для получения переведенных материалов посетите kingcounty.gov/Brightwater



[kingcounty.gov/
brightwater](https://kingcounty.gov/brightwater)

Contact us

24 hour emergency and odor reporting: **206-263-9500**

Community Relations: **206-296-7432**

@KingCountyWTD

