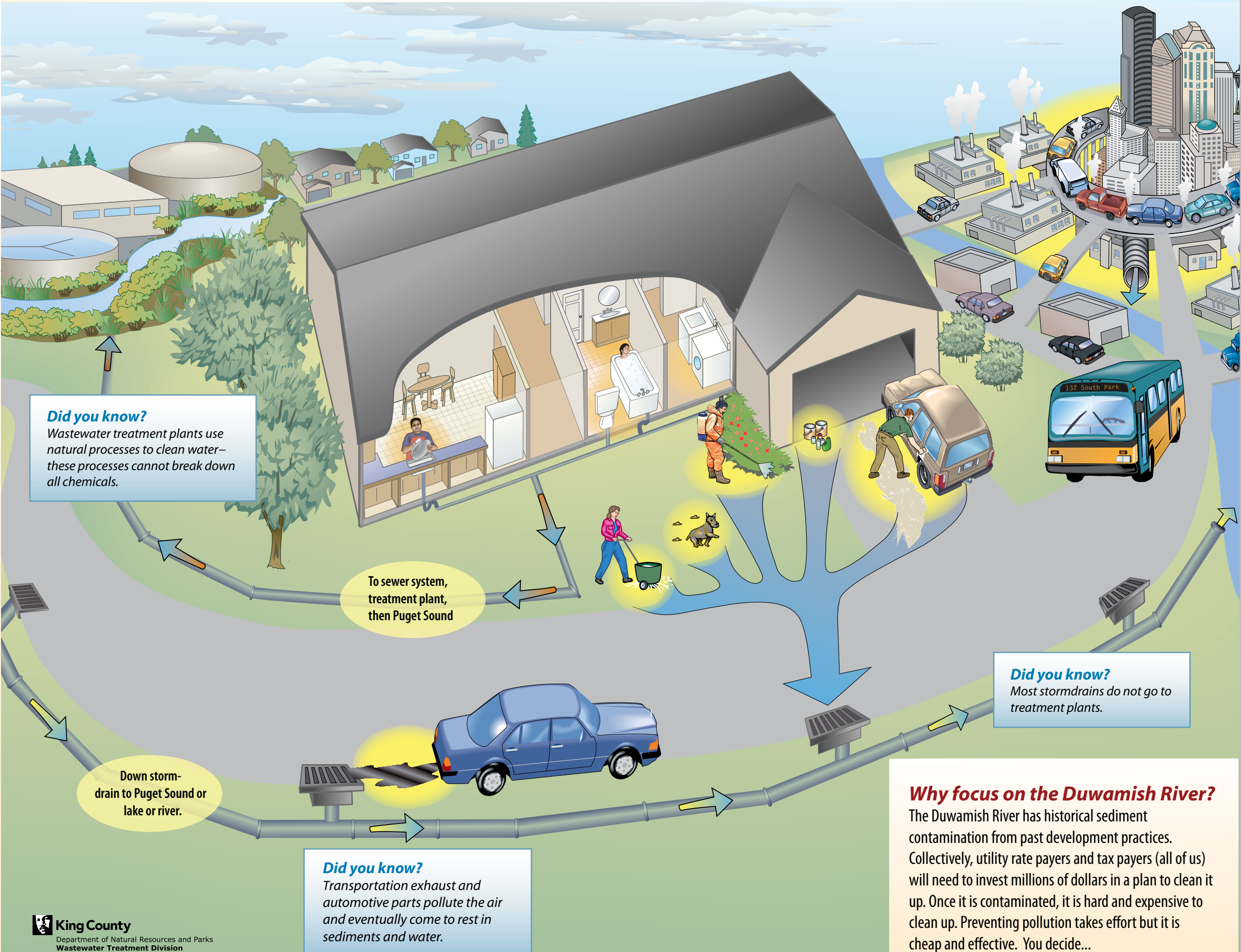
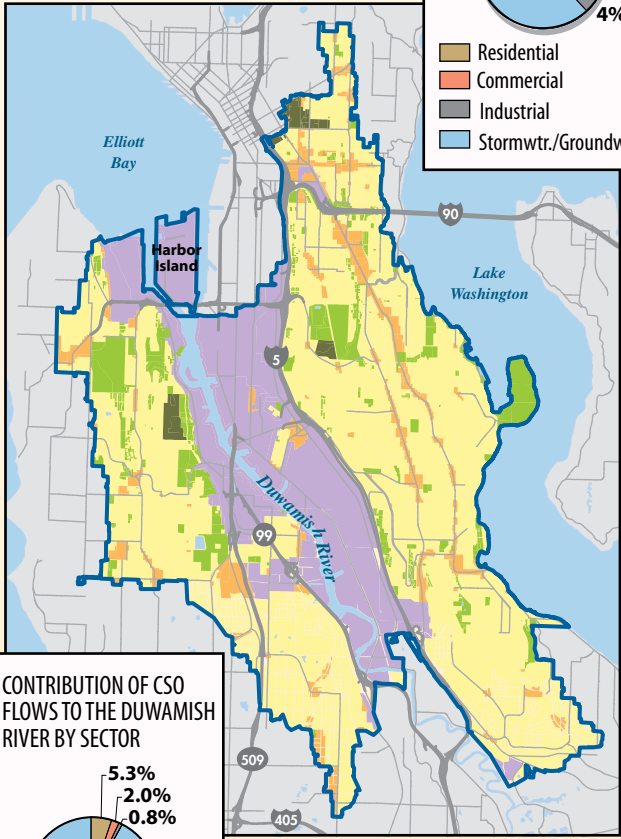


# From your house to the river—how the Duwamish gets “dirty”

## Who makes the water dirty?

We do. Choosing environmentally friendly, biodegradable household cleaning and personal care products minimizes the entry of harmful chemicals into the wastewater stream and the environment. Avoid washing your car on the street to reduce the soap and grime entering stormdrains. Use biosolids compost to keep chemical fertilizers from entering stormwater flows. Cleanups and wastewater controls alone are not enough to protect the Duwamish in the future—we all have a responsibility to do our part to prevent harmful chemicals from getting into our waterways.

**Stormwater runoff from residential and industrial properties in the Lower Duwamish affect the waterway's water and sediment quality.**





**HELP MAKE IT CLEAN... *you decide how dirty...***

**Did you know?**

Most stormdrains do not go to treatment plants.



Use commercial car washes or the grass



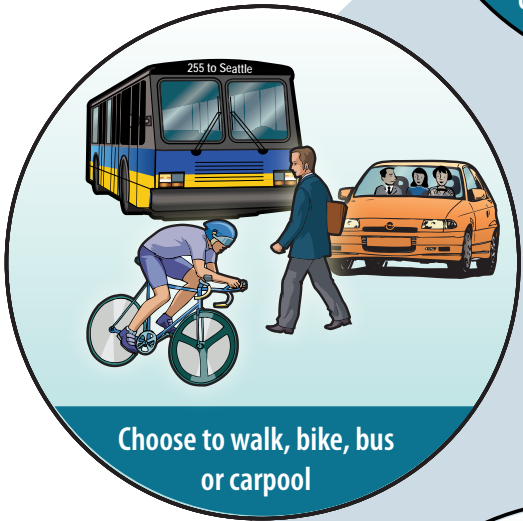
Put trash in a trash can, not the toilet.



Choose natural, simple products. Avoid fragrances, phosphorus and chemicals.



Reduce fertilizers and pesticides: choose natural yard care.



Choose to walk, bike, bus or carpool

**TRANSPORTATION**



Keep cars maintained; fix leaks.

**HOUSE AND GARAGE**



Take hazardous waste to a disposal facility



Return medicines to a pharmacy or put in a trash can.

**YARDS & GARDENS**



Pick up pet waste and throw in trashcan

**Did you know?**

Transportation exhaust and automotive parts pollute the air and eventually come to rest in sediments and water. Car parts, oils and fluids deposit metals, chemicals and toxic liquids on streets which run off into water bodies and contaminate sediments. Leave your car at home and help improve Lower Duwamish and Puget Sound water quality.

**Did you know chemicals do not disappear?**

Wastewater treatment plants use natural processes to clean water—these processes cannot break down all chemicals.