



INDUSTRIAL WASTE PROGRAM
Partnering with Industries
to Prevent Pollution

King County Industrial Waste Program Newsletter - Spring 2021

In this edition: 2020 Annual Report, fulfilling your permit requirements during the pandemic, new rules for wineries, a new application, a new database coming, plus, see the 2020 clean water award winners and read about avoiding penalties so you can earn an award.



Industrial Waste staff are essential, please help protect them – ensure you and your staff are wearing masks

Even as the vaccine rolls out to more people, any of us can carry the COVID-19 virus without showing symptoms. We may not realize we're spreading it when we talk, cough or sneeze. Face coverings are required statewide in all indoor public spaces because they are effective in slowing the spread of COVID-19, especially when combined with 6 feet of physical distance.

Please ask your staff to wear face coverings when KCIW investigators are visiting your facilities. KCIW staff will be wearing face coverings, too.



Read King County's 2020 Industrial Pretreatment Annual Report

The [annual report](#) summarizes King County Industrial Waste's (KCIW) achievements in the areas of operations, special projects and activities, and public outreach. The report meets pretreatment program requirements in the [National Pollutant Discharge Elimination System](#) (NPDES) permits issued to King County's Wastewater Treatment Division's wastewater treatment plants.

2020 Clean Water Awards – The Envelope Please....



Gold, Silver, and Commitment to Compliance awards

Each year, KCIW recognizes significant industrial users of the sewer system that have maintained an excellent record of compliance with rules and regulations for the previous calendar year. This year, 58 local facilities earned environmental awards for dedication to business practices that protected regional water quality in 2020. This included 37 gold, 18 silver, and 3



Some wineries now need formal authorization to discharge to the King County sewer system

Wastewater that is too acidic or too alkaline can seriously corrode a sewer system. Solids in wastewater that are capable of settling can restrict or block flow in sewer lines. A company or facility that discharges solids that cause a sewage backup is liable for any damages.

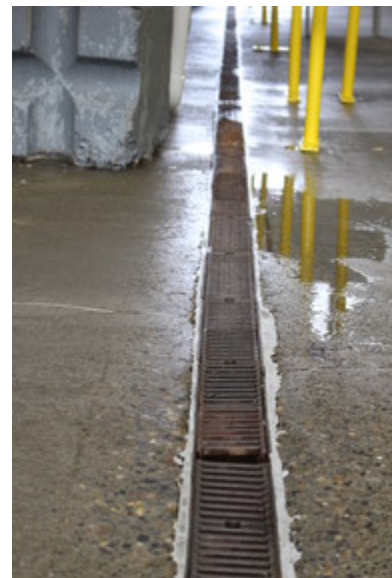
In the past, only a few wineries had authorization to discharge their waste to the King County Sanitary Sewer System. KCIW program has now developed a comprehensive strategy to regulate all of our winery customers. Wineries that meet a production-based threshold level will be required to get formal authorization to discharge winery wastewater to King County's sanitary sewer system. Small wineries that fall below the threshold and are not located within the Vashon or Carnation service areas, will not need a formal authorization to discharge winery wastewater but are still expected to follow [best management practices \(BMPs\)](#) and meet local limits for pH and settleable solids.

Learn more on the [KCIW Wineries website](#).

New and improved permit application now available

In 2020, KCIW developed [a new permit application](#) form for industrial users requesting authorization to discharge industrial wastewater to the sanitary sewer. The new application form is a general form for all industries requesting authorization to discharge industrial wastewater to the sanitary sewer other than construction projects. Detailed instructions are embedded into the application form and are included for the Exhibit section of the application.

Please note: all new applications must use this new form and email it to info.kciw@kingcounty.gov. We can no longer accept applications submitted via FTP site. This will allow us to create a record of receipt of your facility's application and for KCIW to be able to retain a copy of the application for our records long-term.



KCIW's database upgrade project status

KCIW is building a new database to store and collect information. Our goal is that by early winter, industrial users will be able to submit applications, surveys, and self-monitoring reports electronically via an on-line portal. When the online system is ready, we will provide education and support to help you get set up in the system and learn how to use it.



Self-monitoring reports – specifying units

When filling out a self-monitoring report, please make sure you are following [these instructions](#). We have had recent issues with units of measure on submitted reports. It's extremely important that you specify the unit of measure you used when noting your values. Please share the instructions with all staff who fill out the reports.



Make sure you are receiving communications about your authorization – add KCIW to your trusted senders list

If you have a permit or other authorization with KCIW, we will primarily communicate with you by email. Please make sure that you check your SPAM folder and add the “kingcounty.gov” domain to your “trusted senders” list.

Our newsletters and other general announcements will continue to come from this email address: KingCounty@subscriptions.kingcounty.gov but information related to your business and authorization will continue to be sent to you by a kingcounty.gov email address – either KCIW staff or info.kciw@kingcounty.gov. Please ensure you receive these important communications.
