

## ATTACHMENT D: TECHNICAL ASSISTANCE INFORMATION

To support organizations as they navigate the application process, PHSKC partners with Technical Assistance (TA) consultants who bring a wide range of skills, areas of expertise, and language abilities to listen, support, and amplify the strengths of community-based organizations across King County. **TA is free of charge to applicants!**

### **TA consultants can support you by:**

- Helping to determine appropriate fit between your program and the funding opportunity.
- Providing guidance on how best to answer application questions.
- Supporting your application development, including editing and budget review.

If you are applying for an open and/or upcoming funding opportunity and would like the help of a TA consultant, please **reach out directly to them using the email addresses provided below**. We encourage you to only contact one TA consultant and provide them 24 hours to respond before contacting any other consultants.

Please reach out to a TA Consultant as early as possible. We cannot guarantee TA provider availability within 5 business days of when the funding opportunity closes.

Contact information and more about the TA consultants is below. Once you've chosen a TA provider you want to work with, write them an email requesting TA!

## Crux Consulting Consortium



Crux provides wide-ranging technical assistance and capacity building services to passionate, equity driven organizations. Catherine Verrenti, the primary lead for grant assistance with Crux, brings over 20 years in direct service leadership, including extensive successful grant writing, to this work, leveraging programmatic experience in areas including youth development, education, workforce development, health, homelessness, seniors, immigrant/refugee issues, food security and more. She listens deeply to what

organizations seek to accomplish through each grant opportunity to customize a partnership that ensures each proposal submitted is compelling, responsive, and achievable. She sees her role as ensuring that community providers tell their stories through the proposal process to best meet their missions.

**Contact:** [catherine@verrenticonsulting.com](mailto:catherine@verrenticonsulting.com)

---

## Dicentra

Dicentra Consulting's team — Swee May Cripe, Ashenafi Cherkos, and Karen Cowgill — is delighted to have this opportunity to support community-based organizations (CBOs) as they apply for Best Starts funds. Our team speaks Amharic, Tigrigna, Spanish, French, Malay, and Cantonese. We have skills and many years of experience in writing



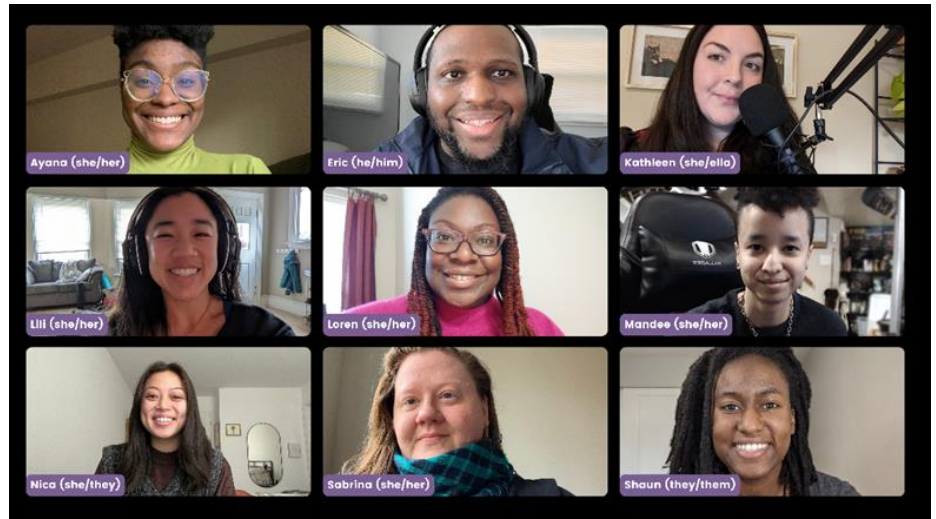
proposals that get funded, designing projects, analyzing data, and conducting evaluations. We focus on building transformational relationships that are based on trust and respect. We understand that every person has value, and we want to help you promote voices from your community. We will first listen to understand the vision and mission of your CBO and what you hope to do with Best Starts funds. Then we will agree together on how we can best support you to tell your story. We are excited to help you craft strong proposals that will be funded and lead to successful programs!

**Contact:** [askdicentra@gmail.com](mailto:askdicentra@gmail.com)

---

## Inclusive Data

Inclusive Data is a consulting team of grant winners and tech wizards who teach and support clients to create community-led solutions. We've honed our grant skills into an \$18+ million playbook for Black non-profits and small businesses in our community all while centering liberation frameworks. For Best Starts, we provide both Technical Assistance and IT Capacity-Building in English, Spanish, and Mandarin. A strong grant proposal demonstrates an organization's ability to build effective partnerships. If you want help creating your own irresistible grant proposals or robust coalitions, we're your team. We will work with you on grant proposal strategies, planning, checklists, and reviews. Contact us today to start your winning proposal.



**Contact:** [grantsteam@inclusivedatasolutions.com](mailto:grantsteam@inclusivedatasolutions.com)

---

## RHL Consulting



RHL is committed to fostering an equitable society where leaders in human services advance the collective power, knowledge and systems that build well-being within communities. Along with equity, relationships are at the center of our work. Our role is to listen

carefully so we may understand our community-based organizations clients' cultural practices, values, and ways of being, trust community wisdom, and co-develop strategies that strengthen organizational assets. Together we are excited to support you to grow your leadership

capabilities, develop fundraising, facilitate strategic growth, mission, vision, and values, build partnerships, magnify your IT, and write successful funding proposals. No matter the task, we come prepared with our values of community, generosity, and integrity, open minds, laughter, and a big toolbox of resources and methods we have used, developed, and co-adapted to suit each organization's culture, needs, and interests.

**Contact:** [rhlconsultingteam@gmail.com](mailto:rhlconsultingteam@gmail.com)