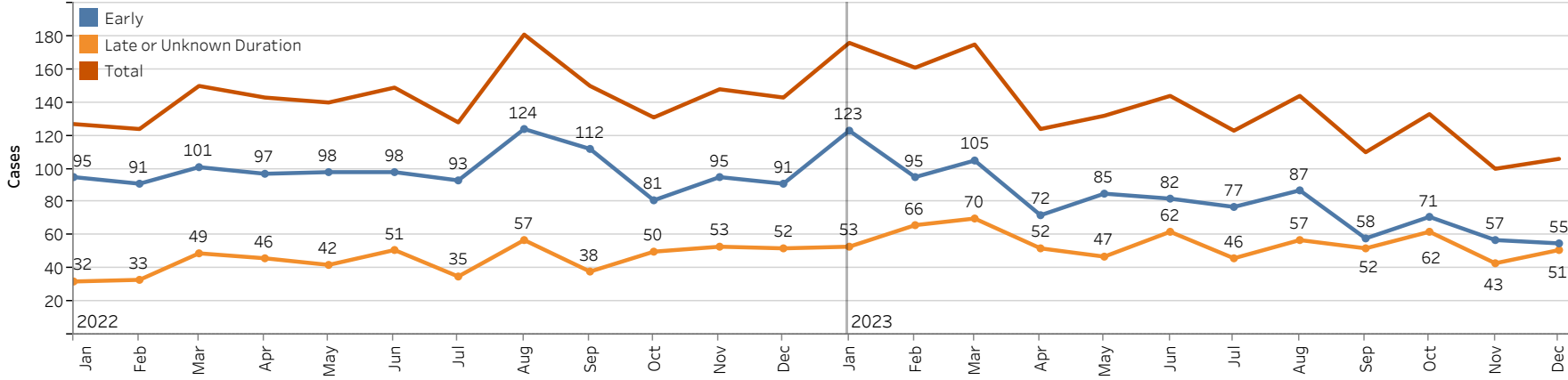


Seattle and King County Monthly Syphilis Report: December 2023

Recent data are incomplete*

*Note: All data are preliminary and data for past months may change due to delays in reporting from labs and providers. This report includes cases reported through January 12, 2024.

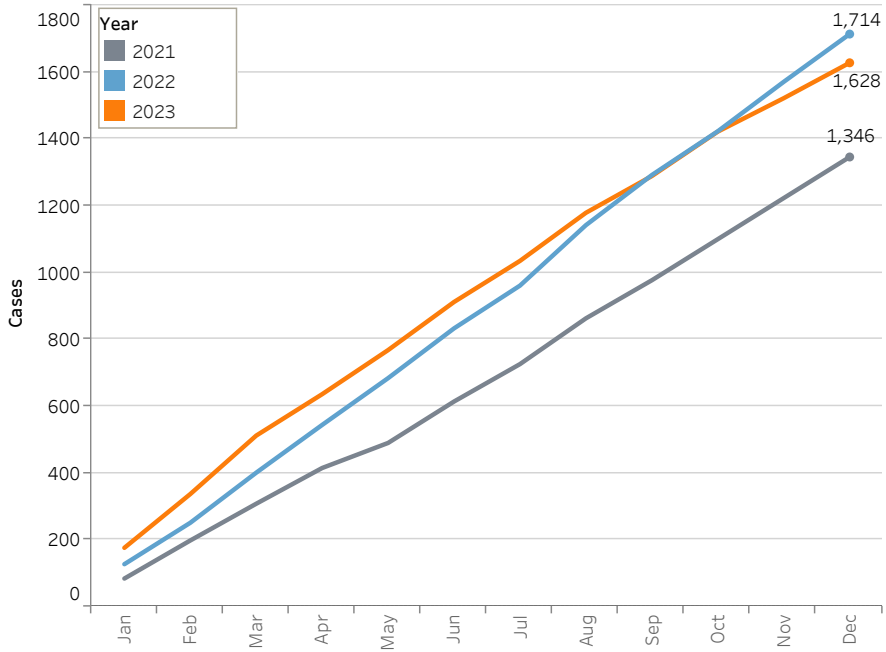
Syphilis Cases by Stage, King County January 2022-December 2023



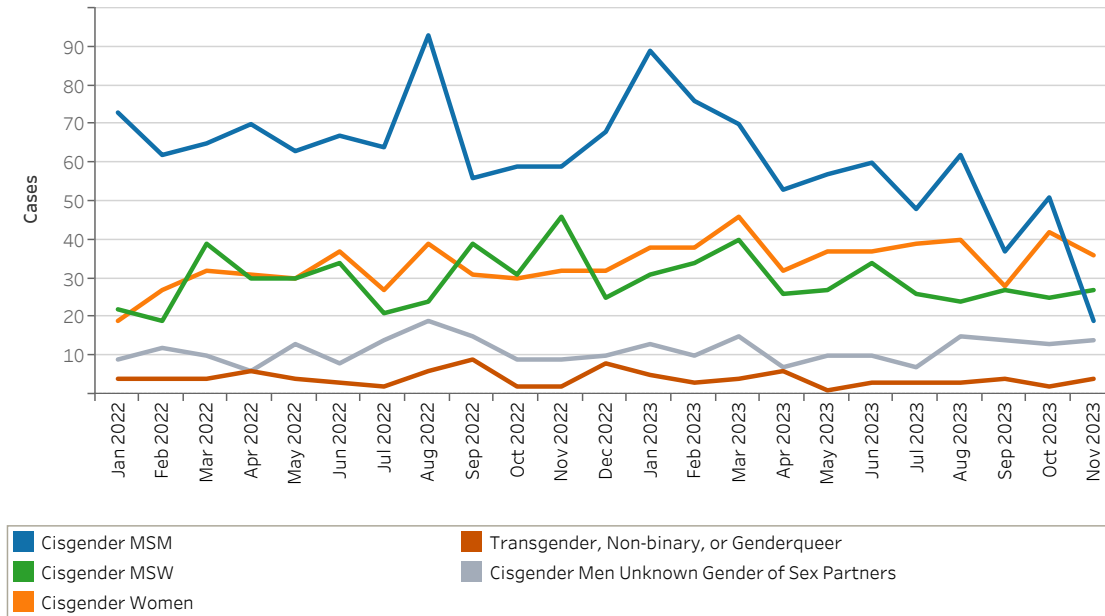
MSM = men who have sex with men
MSW = men who have sex with women only

Early syphilis includes primary, secondary, and early non-primary, non-secondary stages.

Cumulative Syphilis (all stages) Cases by Month and Year, King County 2021-2023



Syphilis (all stages) Cases by Gender and Gender of Sex Partners, King County January 2022-November 2023**



**Due to incomplete reporting cases for the most recent month are not shown by gender and gender of sex partners.

Seattle and King County Monthly Syphilis Report: December 2023

Syphilis (all stages) cases by gender and gender of sex partners and year of diagnosis

Cases diagnosed January-December

	2023	2022
Cisgender MSM	667	799
Cisgender MSW	342	360
Cisgender Women	437	367
Cisgender Men Unknown Gender of Sex Partners	138	134
Transgender, Non-binary, or Genderqueer	44	54

Pregnant and congenital syphilis cases, King County January 2022-December 2023



38 syphilis cases were **pregnant** at the time of diagnosis and **22** **congenital** cases have been diagnosed in 2023.

Syphilis (all stages) cases by race/ethnicity, age, and risk among cisgender men who have sex with men (MSM), cisgender men who have sex with women (MSW), cisgender women, Seattle and South King County January 2022-December 2023¹

Characteristics	Region							
	Seattle				South King County			
	MSM		MSW and Women		MSM		MSW and Women	
	N	%	N	%	N	%	N	%
Total Cases	871	100%	600	100%	373	100%	652	100%
Race/ethnicity								
American Indian/Alaska Native	10	1%	15	3%	6	2%	18	3%
Asian	74	8%	27	5%	24	6%	34	5%
Black	84	10%	169	28%	51	14%	149	23%
Hispanic/Latinx	175	20%	79	13%	110	29%	126	19%
Native Hawaiian or Pacific Islander	5	1%	8	1%	10	3%	15	2%
White	390	45%	228	38%	108	29%	217	33%
Multiracial	23	3%	25	4%	9	2%	33	5%
Other/Unknown	110	13%	49	8%	55	15%	60	9%
Age								
10-14	0	0%	0	0%	1	0%	2	0%
15-19	5	1%	7	1%	10	3%	27	4%
20-24	59	7%	42	7%	40	11%	72	11%
25-29	131	15%	83	14%	47	13%	96	15%
30-34	195	22%	97	16%	74	20%	113	17%
35-44	244	28%	185	31%	101	27%	179	27%
45-54	146	17%	104	17%	57	15%	92	14%
>=55	91	10%	82	14%	43	12%	71	11%
Total Interviewed	92	11%	250	42%	51	14%	329	50%
Risk factors among interviewed cases ²								
Homeless (past 3 months)	11	12%	89	36%	5	10%	66	20%
Injection Drug Use (past year)	5	5%	19	8%	1	2%	14	4%
Methamphetamine Use (past year)	14	15%	73	29%	3	6%	69	21%
Opioids Use (past year) ³	2	2%	53	21%	1	2%	35	11%
Substance Use (past year) ⁴	15	16%	84	34%	3	6%	73	22%
Exchange Sex (past year)	3	3%	11	4%	3	6%	5	2%
No Risk Identified	75	82%	130	52%	43	84%	232	71%

¹Note: All data are preliminary and data for past months may change due to delays in reporting from labs and providers. This report includes cases reported through January 24, 2024.

²Risk factors are limited to cases interviewed by Public Health staff. Percentages shown are among interviewed cases. No risk identified includes cases with no reported homelessness, injection drug use, methamphetamine use, opioid use, or exchange sex.

³Opioids not used as directed by a doctor. Includes fentanyl use.

⁴Substance use includes any injection drug, methamphetamine, or opioid use.