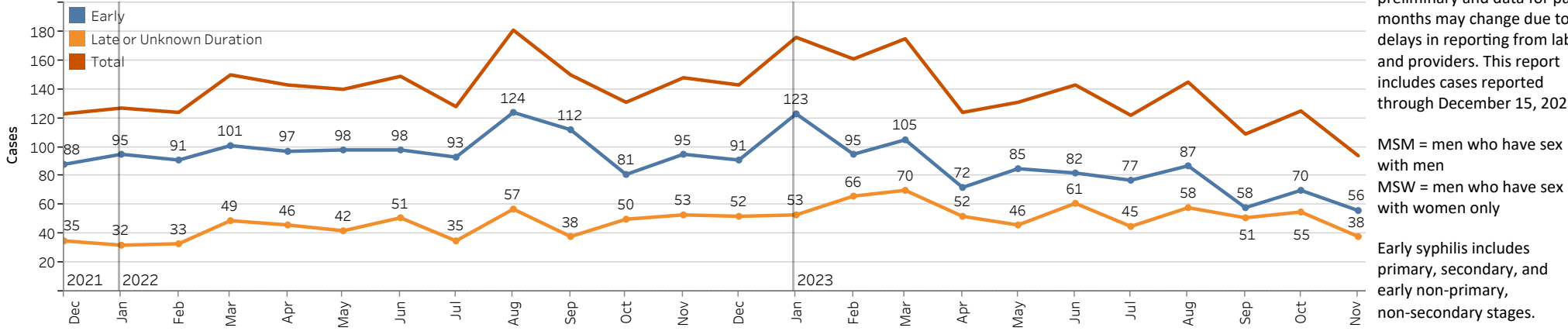


## Seattle and King County Monthly Syphilis Report: November 2023

Recent data are incomplete\*

\*Note: All data are preliminary and data for past months may change due to delays in reporting from labs and providers. This report includes cases reported through December 15, 2023.

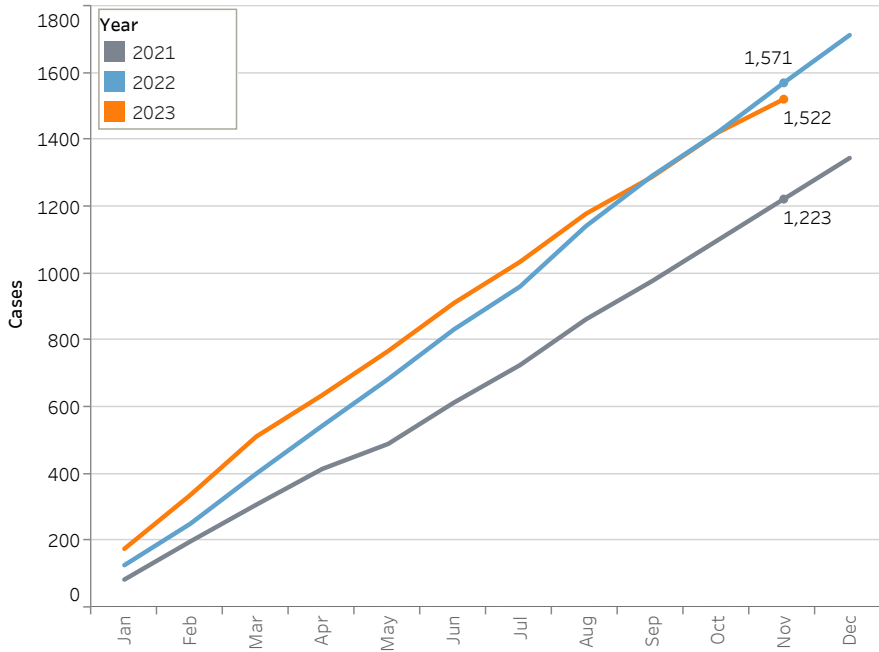
**Syphilis Cases by Stage, King County December 2021-November 2023**



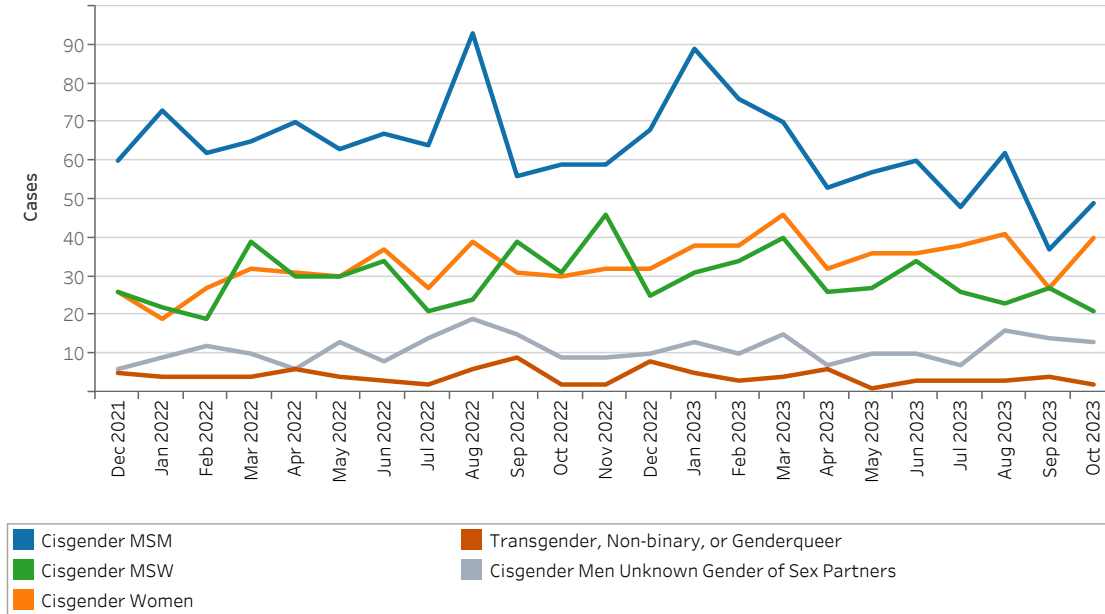
MSM = men who have sex with men  
MSW = men who have sex with women only

Early syphilis includes primary, secondary, and early non-primary, non-secondary stages.

**Cumulative Syphilis (all stages) Cases by Month and Year, King County 2021-2023**



**Syphilis (all stages) Cases by Gender and Gender of Sex Partners, King County December 2021-October 2023\*\***



\*\*Due to incomplete reporting cases for the most recent month are not shown by gender and gender of sex partners.

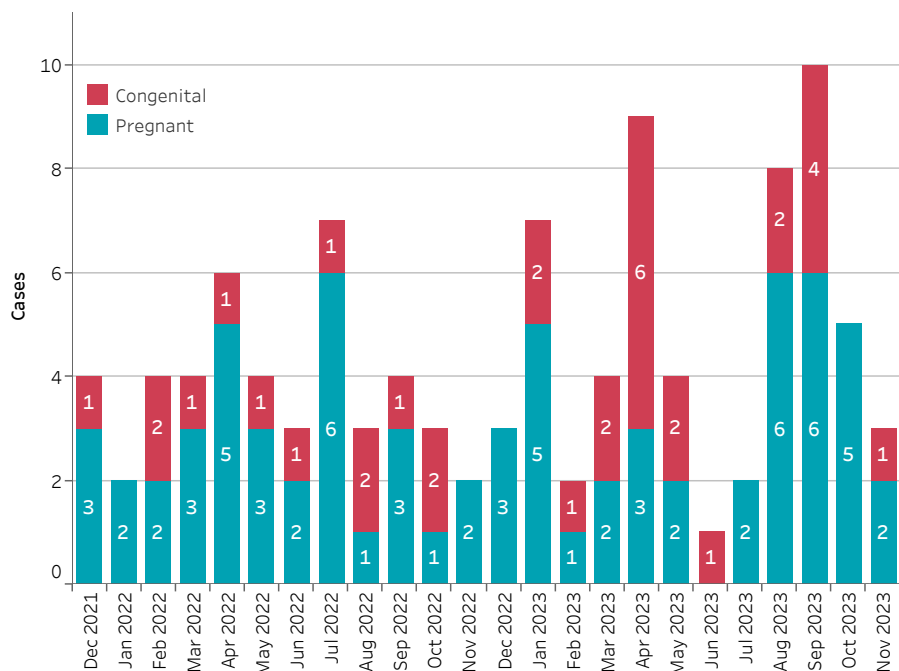
## Seattle and King County Monthly Syphilis Report: November 2023

### Syphilis (all stages) cases by gender and gender of sex partners and year of diagnosis

Cases diagnosed January-November

	2023	2022
Cisgender MSM	620	731
Cisgender MSW	311	335
Cisgender Women	408	335
Cisgender Men Unknown Gender of Sex Partners	128	124
Transgender, Non-binary, or Genderqueer	38	46

### Pregnant and congenital syphilis cases, King County December 2021-November 2023



**34** syphilis cases were **pregnant** at the time of diagnosis and **21** congenital cases have been diagnosed in 2023.

Syphilis (all stages) cases by race/ethnicity, age, and risk among cisgender men who have sex with men (MSM), cisgender men who have sex with women (MSW), cisgender women, Seattle and South King County December 2021-November 2023<sup>1</sup>

Characteristics	Region							
	Seattle				South King County			
	MSM		MSW and Women		MSM		MSW and Women	
	N	%	N	%	N	%	N	%
Total Cases	884	100%	610	100%	376	100%	660	100%
Race/ethnicity								
American Indian/Alaska Native	10	1%	15	2%	6	2%	18	3%
Asian	74	8%	28	5%	26	7%	33	5%
Black	87	10%	171	28%	51	14%	151	23%
Hispanic/Latinx	178	20%	79	13%	111	30%	126	19%
Native Hawaiian or Pacific Islander	6	1%	8	1%	11	3%	15	2%
White	369	42%	227	37%	111	30%	217	33%
Multiracial	21	2%	28	5%	9	2%	32	5%
Other/Unknown	112	13%	54	9%	51	14%	68	10%
Age								
10-14	0	0%	0	0%	1	0%	2	0%
15-19	5	1%	9	1%	10	3%	27	4%
20-24	60	7%	46	8%	42	11%	74	11%
25-29	132	15%	84	14%	47	13%	103	16%
30-34	200	23%	101	17%	76	20%	113	17%
35-44	245	28%	185	30%	100	27%	180	27%
45-54	147	17%	100	16%	57	15%	90	14%
>=55	95	11%	85	14%	43	11%	71	11%
Total Interviewed	95	11%	260	43%	56	15%	338	51%
Risk factors among interviewed cases <sup>2</sup>								
Homeless (past 3 months)	12	13%	90	35%	5	9%	68	20%
Injection Drug Use (past year)	5	5%	21	8%	1	2%	15	4%
Methamphetamine Use (past year)	15	16%	77	30%	4	7%	71	21%
Opioids Use (past year) <sup>3</sup>	2	2%	53	20%	1	2%	35	10%
Substance Use (past year) <sup>4</sup>	16	17%	87	33%	4	7%	75	22%
Exchange Sex (past year)	3	3%	13	5%	4	7%	5	1%
No Risk Identified	77	81%	137	53%	47	84%	238	70%

<sup>1</sup>Note: All data are preliminary and data for past months may change due to delays in reporting from labs and providers. This report includes cases reported through December 15, 2023.

<sup>2</sup>Risk factors are limited to cases interviewed by Public Health staff. Percentages shown are among interviewed cases. No risk identified includes cases with no reported homelessness, injection drug use, methamphetamine use, opioid use, or exchange sex.

<sup>3</sup>Opioids not used as directed by a doctor. Includes fentanyl use.

<sup>4</sup>Substance use includes any injection drug, methamphetamine, or opioid use.