



Visit the Needle Exchange

2124 Fourth Avenue

(4th Ave & Blanchard in Downtown Seattle)

Open Monday - Friday
1–5 pm

Saturday
2–4 pm

- Exchange used rigs for new sterile ones.
- Get great advice and helpful hints from our vein care pros.
- Get quality health care from the docs in our Medical Clinic.
(Monday - Friday,
1:30 - 4:30 pm)

**There are 7 needle exchange sites in
King County.**

**Call 206-263-3000 or visit
www.kingcounty.gov/needle
for hours and more information.**

Public Health
Seattle & King County 



What does YOUR needle look like ?





Skin is tough!

Every time you hit, your skin barsbs the point. Damaged points can lead to:

- Abscesses
- Infections
- Blown veins



Save your veins!

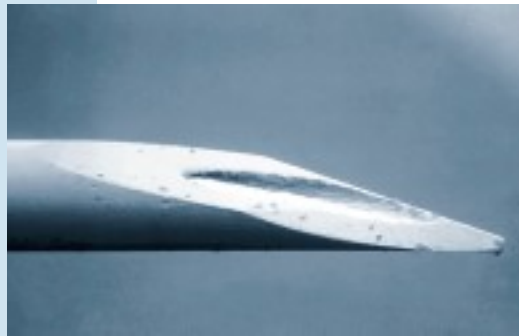
- If you miss your vein, re-load a new syringe and try again.
- Don't use the same point to hit over and over again.
- Trying to sharpen a used point makes more barbs.
- Don't use the tip of your needle to mix your hit.



**Use a brand new syringe
EVERY TIME
you poke your skin
or vein.**



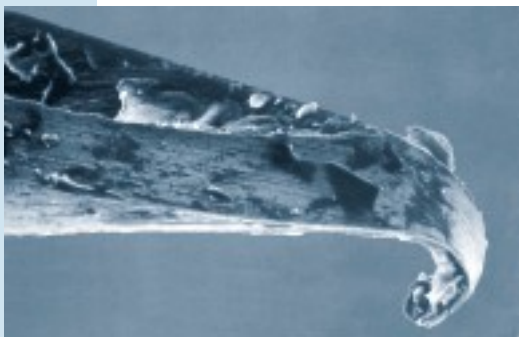
New needle point



Needle point, used once



Needle point, used twice



Needle point, used six times