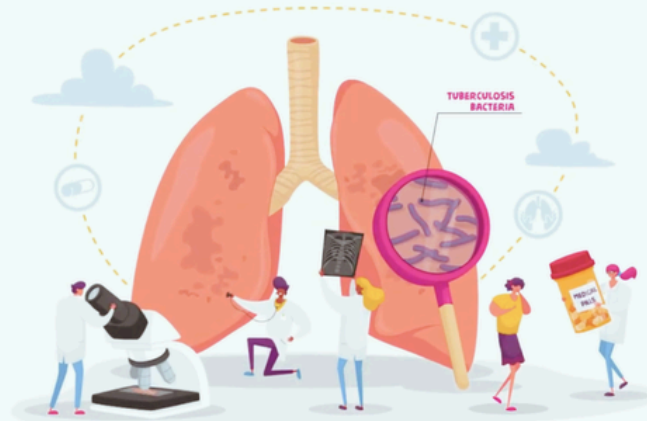




WASHINGTON TB COLLABORATIVE NETWORK

wtcn@kingcounty.gov

LET'S STOP TB TOGETHER



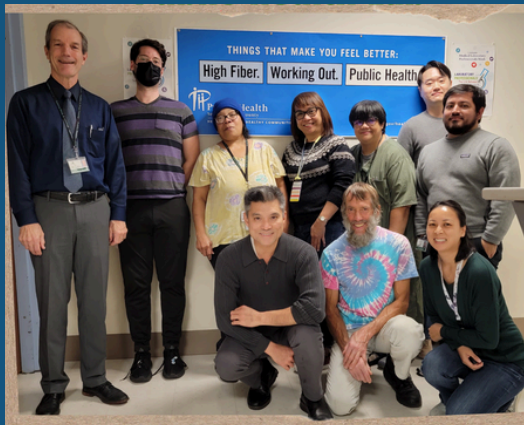
HOW THE COLLABORATIVE NETWORK WORKS

We provide medical consultations and resource support for Tuberculosis programs around Washington and facilitate connections among network partners. All interested Local Health Jurisdictions and Tribal Health Tuberculosis Programs are welcome



SERVICES OFFERED

Medical Consultations
Job Shadowing
Resource Sharing
Contact Investigation Support
QFT Lab Support



King County Public Health Lab

You can request
assistance from
WTCN here

Or you can call
206-744-4579, option 1



WTCN IN 2025



- 5 medical consults
- 4 instances of resource sharing
- 3 instances of lab coordination support
- 42 instances of care coordination
- 7 contact investigation support opportunities
- 1 instance of job shadowing

TESTIMONIALS

WTCN consistently provides support, education, and guidance that help us respond more effectively to TB cases in our community. Through shadowing opportunities, laboratory support, resource sharing, and consultation services, they have become a trusted partner in strengthening TB response efforts across our region. What we appreciate most is the collaboration and support they provide. WTCN truly feels like an extension of our team. Knowing we can rely on their expertise and full TB team support helps us feel less alone in managing complex TB cases, especially in rural areas where resources can be limited. Their dedication to collaboration, education, and ongoing support has made a meaningful difference for both our staff and the patients we serve.

-Skagit County-

WTCN consults are an invaluable service when treating patients with severe tuberculosis or patients who have severe side effects or other intolerance to treatment. Having the expertise to help back you up on these cases quickly is very helpful. And it also allows us to feel confident that we are making the right treatment decisions.

-Pierce County-



TB ECHO is a series of virtual meetings supported by WTCN. The Washington State Department of Health, Seattle King County Public Health, and University of Washington partner together to provide didactics and case consultations. In 2025, participants shared the following feedback through anonymous survey:

- 95% of survey participants agreed that participation in TB ECHO increased awareness of available TB tools and resources for clinicians
- 86% of survey participants applied knowledge learned in TB ECHO sessions to patients in their clinic

