

MAFAUFAU I LE FATAFATA VAIVAI (TB)

E TO'ATELE TAGATA E MAUA I SIAMA FA'ALILOILO O LE TB
MA E LATOU TE ONO LE ILOA



Sa e fanau i se nofoaga pe sa e nofo i se atunuu e taatele ai le TB?

E taatele le fatafata TB i le lalolagi atoa. E aofia ai soo se atunuu lava e 'ese mai le lonaite Setete, Kanata, Ausetalia, Niu Sila, poo se atunuu i le itu sisifo poo matū o Europa i lenei fa'ama'i



E iai sou ma'i tumau e te lagonaina ai le TB o lou tino? O oe o se tagata e maua i le ma'i suka?

FESILI I LAU FOMA'I E FA'ATATAU I SIAKI MA TOGAFITIGA O LE FATAFATA TB E LEAI NI ĀUGA

E TUSA PE E TE SOIFUA MALOLOINA, O SIAMA FA'ALILOILO O LE TB E MAFAI ONA AVEA MA MA'I O LE TB



E fa'aapefea ona ese mai le fatafata vaivai (TB) e leai ni āuga mai le fa'ama'i o le fatafata TB

O tagata e maua i le fatafata vaivai e leai ni āuga

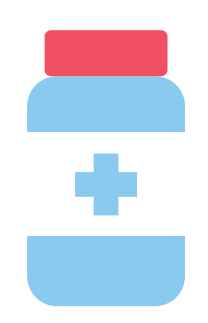
E LEAI NI FA'ALOGONA MA'I



E LE MAFAI ONA PEPESI ATU O LATOU SIAMA I ISI

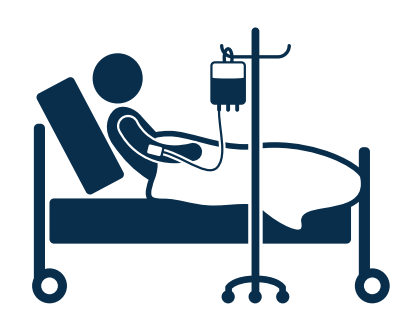


AE MAFAI ONA FA'ATUPUTUPULA'IA LE MA'I FATAFATA TB E AUNOA MA SE TOGAFITIGA

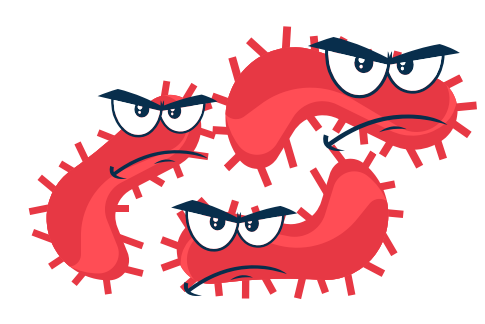


O tagata e maua i le fa'ama'i o le fatafata TB

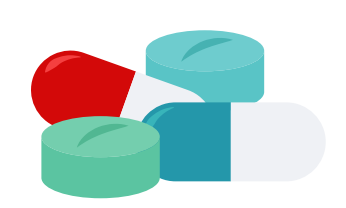
E LAGONA LE MA'I



E MAFAI ONA PEPESI ATU O LATOU SIAMA I ISI



E MAFAI ONA TOGAFITIA LE MA'I FATAFATA TB I VAILAAU



E TUSA PE E TE SOIFUA MALOLOINA, O SIAMA FA'ALILOILO O LE TB E MAFAI ONA AVEA MA MA'I O LE TB

