

# BLACK PROVIDERS NETWORK

**February 23, 2024**

**~Infographic & Data Feedback~**



# WELCOME





# Infographic 1

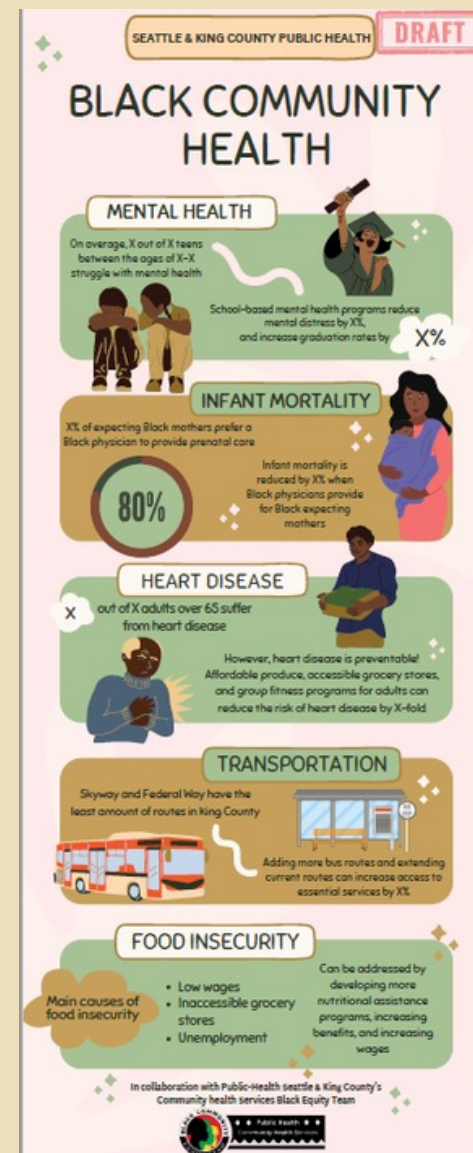


Network comments:

- 2 people selected as top choice
- 2 people selected as 2nd choice
- 2 people selected as 3rd choice
  - A little too busy
  - Looks fantastic
  - Love this one



# Infographic 2



Network comments:

- 5 people selected as top choice
- 1 person selected as 2nd choice
- 0 people selected as 3rd choice
  - More pleasing & eye catching
  - Colors are not so loud, very calming
  - Love this
  - Very clean but still informative



# Infographic 2 update

SEATTLE & KING COUNTY PUBLIC HEALTH **DRAFT**

## BLACK COMMUNITY HEALTH

### MENTAL HEALTH

On average, X out of X teens between the ages of X-X struggle with mental health.

School-based mental health programs reduce mental illness by X%, and increase graduation rates by X%.

### INFANT MORTALITY

X% of expecting Black mothers prefer a Black physician to provide prenatal care.

Infant mortality is reduced by X% when Black physicians provide for Black expecting mothers.

### HEART DISEASE

X out of X adults over 65 suffer from heart disease.

However, heart disease is preventable! Affordable produce, accessible grocery stores, and group fitness programs for adults can reduce the risk of heart disease by X-fold.

### TRANSPORTATION

Skyway and Federal Way have the least amount of routes in King County.

Adding more bus routes and extending current routes can increase access to essential services by X%.

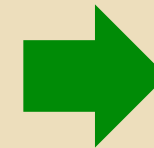
### FOOD INSECURITY

Main causes of food insecurity:

- Low wages
- Inaccessible grocery stores
- Unemployment

Can be addressed by developing more nutritional assistance programs, increasing benefits, and increasing wages.

In collaboration with Public-Health Seattle & King County's Community Health Services Black Equity Team



**DRAFT**

## BLACK COMMUNITY HEALTH IN KING COUNTY

### YOUTH MENTAL HEALTH

Depression prevalence in King County increased by 5.5% among Black youth.<sup>1</sup>

School-based mental health resources, according to multiple studies, can promote positive mental health outcomes among youth.<sup>2</sup>

### INFANT MORTALITY

In 2021, the King County infant mortality rate was 11.6 per 1,000 live births for Black mothers.<sup>3</sup> Infant mortality can be reduced by providing more Black physician networks and quality prenatal care.<sup>4</sup>

### HEART DISEASE

From 2016 to 2021, Heart Disease mortality among Black people increased about 30% in King County.<sup>5</sup>

Improving accessibility to fresh produce and increasing the presence of Black physicians can contribute to lowering heart-related mortality rates.<sup>6</sup>

### ELDER CARE

Black adults ages 65-74 report the highest amount of frequent mental distress (24.5%) compared to any other age group among Black people in King County.<sup>7</sup>

### FOOD INSECURITY

Food insecurity among Black people in King County has decreased by 3.3% from 2018 to 2021.<sup>8</sup>

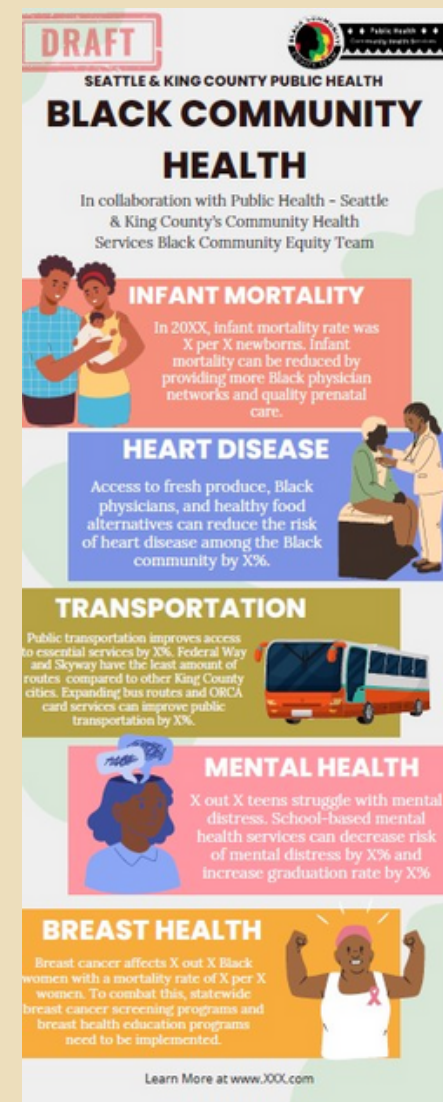
The prevalence of food insecurity among the Black community is still higher than the King County average.<sup>9</sup>

Food insecurity can be addressed by developing more nutritional assistance programs, community gardens, and increasing wages.<sup>10</sup>

visit [kingcounty.gov/acet](http://kingcounty.gov/acet) for more information

1. National Institute of Mental Health, 2021. 2. American Psychological Association, 2021. 3. CDC, 2021. 4. American College of Obstetrics and Gynecology, 2021. 5. CDC, 2021. 6. American Heart Association, 2021. 7. CDC, 2021. 8. USDA, 2021. 9. USDA, 2021. 10. USDA, 2021.

# Infographic 3



Network comments:

- 1 person selected as top choice
- 1 person selected as 2nd choice
- 2 people selected as 3rd choice
  - No additional comments

## Health Topic Survey

As we continue to develop the Data Infographic, we would appreciate your feedback on topics to feature. Please take a moment to fill out this survey - THANK YOU!

Use the table below to indicate your interest:

	Very interested	Interested	Neutral	Not Interested
Mental Health	<input type="radio"/>	<input type="radio"/>	<input type="radio"/>	<input type="radio"/>
Breast Health	<input type="radio"/>	<input type="radio"/>	<input type="radio"/>	<input type="radio"/>
Infant Mortality	<input type="radio"/>	<input type="radio"/>	<input type="radio"/>	<input type="radio"/>
Transportation	<input type="radio"/>	<input type="radio"/>	<input type="radio"/>	<input type="radio"/>
Heart Disease	<input type="radio"/>	<input type="radio"/>	<input type="radio"/>	<input type="radio"/>
Food Insecurity	<input type="radio"/>	<input type="radio"/>	<input type="radio"/>	<input type="radio"/>
Vaping	<input type="radio"/>	<input type="radio"/>	<input type="radio"/>	<input type="radio"/>

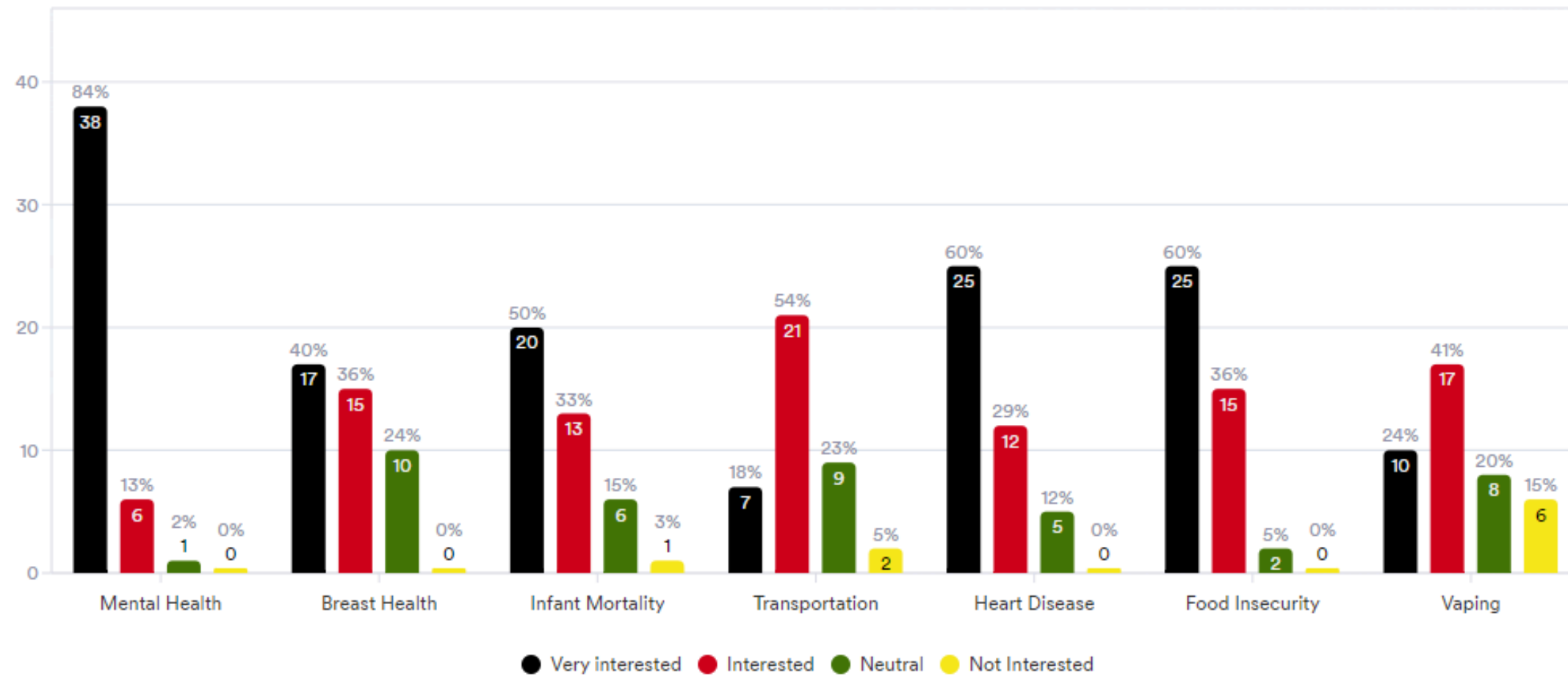




# Health Topics Survey Talled Results

The table below indicates interest among survey respondents:

46 Responses



# ADDITIONAL HEALTH TOPICS

- **Colorectal Cancer**
- **Preventative Health**
- **Complementary Medicine**
- **Maternal Health**
- **Elderly care in Black community**
- **Fentanyl Use**
- **Black Homelessness**
- **Physical Wellness - movement & fitness based programs**
- **Youth & Young People's Health**
- **Disabled People's Health**
- **Colon Cancer Prevention**
- **Alzheimer and Dementia**
- **Nutrition and healthy foods**
- **Improving health outcomes with physical activities**
- **Health career opportunities**
- **Inflammation diseases**
- **Holistic Resource & whole life support focusing on SDOH**
- **Substance Use Disorder**
- **Food Insecurities: Depression, how it affects eating disorders**
- **Economic Security/Wealth & Wellness**
- **Housing**
- **Drug Overdose (Elder focus)**
- **Fall Prevention (Elder focus)**
- **Youth Suicide**
- **Wellness Lifestyle**
- **Diabetes, A1C**
- **Vaccine Confidence**
- **Asthma**
- **Bullying and criminal activity in Black youth**
- **Stress reduction and the positive impact on the body**

**If you have additional topics of interest, please reach out to Devon at [devon.love@kingcounty.gov](mailto:devon.love@kingcounty.gov)**

**Thank you!**

