



**KCRHA**  
King County Regional Homelessness Authority

# **Severe Weather Response: Sheltering our Unhoused Neighbors**

King County Regional Homelessness Authority  
2023-2024 Winter Weather Season

# Mission & Theory of Change

Our mission is to significantly decrease homelessness throughout King County, using equity and social justice principles.

If we create a homeless response system that centers the voices of people with lived experience, then we will be able to meet needs and eliminate inequities, in order to end homelessness for all.



# Purpose and Structure

The **Interlocal Agreement** (ILA) describes the role, scope, and purpose of the KCRHA:

- **Governing Committee & Implementation Board** for accountability (currently under review)
- Unified **planning and coordination of funding and services** for people experiencing homelessness countywide.
- **Oversight** on policy, contract management, and performance management.
- **Continuum of Care** functions, as required by the U.S. Department of Housing and Urban Development to receive federal funding, formerly housed within “All Home”.
- Creation of a new **Ombuds Office** to serve as a single point of contact for customers.
- Establishment of **clear metrics and milestones** for measuring success and for ensuring accountability and transparency.





City of Seattle



King County



**KCRHA**  
King County Regional Homelessness Authority

## INFRASTRUCTURE

Housing Capital  
and Development



CoC Funded Programs



Shelter



## PROGRAMS

Diversion



Rapid Re-Housing



Coordinated Entry



HMIS



## OTHER SERVICES

Outreach



Encampment  
Cleans



Behavioral Health  
and Crisis Response



# Role of KCRHA in Severe Weather

*To provide an emergency system of services, including opening safe, short-term emergency day and nighttime shelters, and coordinating outreach to unsheltered people.*



# Stages of Response

- Monitoring
- Pre-Activation
- Activation
- Operations
- De-Activation
- Post Event



# Winter Weather Response Tiers

Tier 1	Tier 2	Tier 3
<ul style="list-style-type: none"> <li>Daily high temps <b>45 or below for 3 days</b></li> <li>Real Feel (wind, rain) conditions <b>predict dangerous situations</b></li> </ul>	<ul style="list-style-type: none"> <li>Daily high temperatures predicted at <b>40 degrees or below for 3 days</b></li> <li>OR daily low temperatures predicted at <b>35 degrees or below for 3 days</b></li> <li>OR snow/ rain accumulation <b>greater than 2 inches</b></li> </ul>	<ul style="list-style-type: none"> <li>Daily high temperatures predicted at <b>35 degrees or below for a single day</b></li> <li>OR daily low temperatures predicted at <b>30 degrees or below for a single day</b></li> <li>OR snow/rain accumulation <b>greater than 4 inches</b></li> </ul>
<ol style="list-style-type: none"> <li><b>Increased Outreach and Survival Supplies</b></li> </ol>	<ol style="list-style-type: none"> <li><b>Increased Outreach and Survival Supplies</b></li> <li><b>Opening of Temporary Emergency Shelters</b></li> </ol>	<ol style="list-style-type: none"> <li><b>Increased Outreach and Survival Supplies</b></li> <li><b>Opening of Temporary Emergency Shelters</b></li> <li><b>Expanded transportation, storage, warming centers, hotel stays</b></li> </ol>



# Where People Go

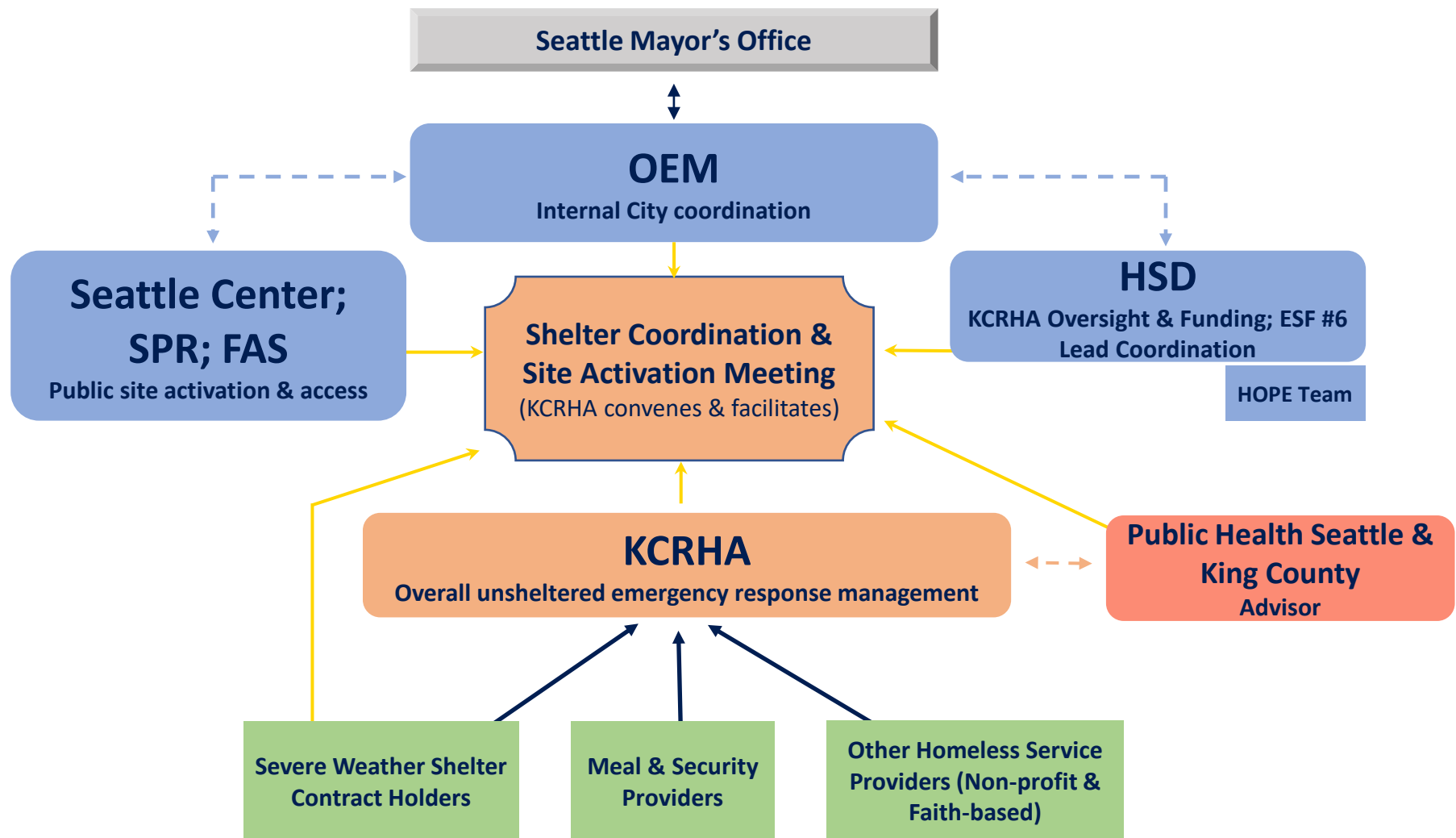
- Existing Emergency Shelters with Drop-In
- Existing Emergency Shelters with Expanded Capacity
- Stand-Up Severe Weather Shelters
- Stand-Up Warming Centers
- King County Library Locations
- Family Shelter Intake Line





# Severe Weather Response by Subregion





# North King County

## NKC Severe Weather Shelter Site-St. Dunstan's

*Funded through our  
partnership with Shoreline,  
Lake Forest Park, Kenmore,  
Bothell, Woodinville, & King  
County*

### Pre- Activation

- Alert cities & shelter operators of activation.
- Alert NKC community of upcoming activation.

### Activation

- Daily huddles with core NKC stakeholders.
- Daily emails to NKC community reporting updates or changes. Sharing flyers, website, and resources.

### Post- Activation

- Collecting utilization numbers from future SW shelters.
- Process reimbursement requests submitted by contracted year-round providers.



# East King County & Snoqualmie Valley

## Pre-Activation

- Alert cities & providers of upcoming activation. Request expansion of shelters and day center hours.
- Alert EKC community of upcoming activation.

## Activation

- Daily huddles with core EKC Severe Weather Stakeholders.
- Daily emails to EKC community of any updates or changes. Sharing flyers, website, and resources.

## Post-Activation

- Collecting utilization numbers from shelters.
- Requesting feedback from shelters and community.
- Processing reimbursement requests for added operational costs.



# South & South East King County

## 2023-24 Response:

- 2-4 Severe Weather Shelters
- 1 Overnight Warming Center
- 2 Emergency Shelters (out of 7) sometimes expand capacity.

Pre-Activation

- Alert cities & shelter operators of activation. Ask if they are planning to open / expand shelters.
- Alert SKC community of upcoming activation.

Activation

- Daily huddles or emails to check in on shelters
- Daily emails to SKC community of any updates or changes. Sharing flyers, website, and resources.

Post-Activation

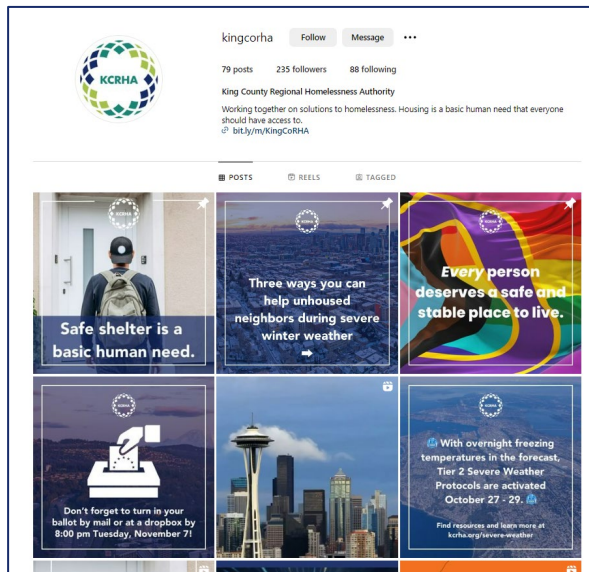
- Collecting utilization numbers from shelters.
- Requesting feedback from shelters and community.



# General Public Comms

Information about severe weather activations is shared widely:

- KCRHA Website & Social Media
- Emails to providers, outreach teams, libraries, and other system partners.



## KCRHA's Severe Weather Response Protocols are not currently active.

*This page was last updated on Monday, October 30 at 11:30 am.*

Across all seasons, Public Health of Seattle-King County has advice on [being prepared for hot weather](#), and [being prepared for wildfire smoke](#), and, in the case of extreme cold, [how to prevent and treat hypothermia](#).

Learn more about [thresholds for cold weather activation](#) or review our full [Severe Weather Policy](#).

Use the links below to find forecast information and year-round resources.

National Weather  
Service  
Seattle Briefings

Year-Round  
Regional Services  
Database

Current  
Seattle  
Forecast

Shareable Graphics & Fliers



Seattle



North King County



South King County



East King County



Snoqualmie Valley



Ways the Community Can Help



# Improving our Response

- Five-Year Plan Severe Weather Activities:
  - Expand number of Severe Weather Shelters
  - Coordinate & Centralize the Severe Weather Response Countywide
  - Expand Outreach During Severe Weather Events
  - Incorporate Severe Weather Funding into Existing Contracts
  - Improve Guests Connections to Services During & After Activation
- Shift to Seasonal Shelters
- Shoring up funding & reimbursement processes
- Exploring partnerships to equip and deploy community volunteers and to identify additional shelter host sites.

