

Infant mortality

King County, 2008-2012 average

Description: Deaths in the first year of life

Source: Linked Birth-Death Certificate Data, Washington State Department of Health, Center for Health Statistics

Most recent data (2012): 4.1 deaths per 1,000 live births in King County, including 102 infants.

	Rate	Lower CI	Upper CI	Count per Year
King County (all live births)	4.1	3.7	4.4	101
Mother's Age				
<18	5.7 [§]	2.4	11.1	2
18-24	6.4	5.4	7.6	26
25-29	3.7	3.1	4.5	24
30-34	3.2	2.6	3.8	26
35-39	3.6	2.9	4.4	17
40+	4.8	3.3	6.9	6
Race/Ethnicity				
AIAN	7.0 [§]	2.8	14.3	1
Asian	3.1	2.5	3.9	15
Black	7.0	5.5	8.8	14
Hispanic	4.3	3.4	5.4	15
Multiple	7.3	5.0	10.2	7
NHPI	4.7 [§]	2.2	8.9	2
White NH	3.4	3.0	3.9	46
Neighborhood Poverty				
High	6.0	5.0	7.1	24
Medium	3.9	3.5	4.3	61
Low	2.9	2.3	3.7	15
Region				
East	2.9	2.3	3.5	18
North	2.8	1.7	4.3	4
Seattle	4.0	3.4	4.7	29
South	4.9	4.3	5.6	50

Notes:

N/A: Not available

* Too few cases to protect confidentiality and/or report reliable rates

§ Too few cases to meet precision standard, interpret with caution

CI is 95% Confidence Interval

Rate = Deaths per 1,000 live births

NH = non-Hispanic

Prepared By: Public Health - Seattle & King County;

Assessment, Policy Development, & Evaluation, 1/2015

Infant mortality by health reporting areas

King County, 2008-2012 average

Source: Linked Birth-Death Certificate Data, Washington State Department of Health, Center for Health Statistics

Health Reporting Area	Rate	Lower CI	Upper CI	Count per Year
King County	4.1	3.7	4.4	101
Auburn	3.6	2.1	5.7	3
Auburn-North	2.7 [§]	1.1	5.5	1
Auburn-South	4.6 [§]	2.2	8.4	2
Bear Creek/Carnation/Duvall	3.1 [§]	1.4	5.8	2
Bellevue	3.1	2.0	4.6	5
Bellevue-Central	2.4 [§]	1.0	5.0	1
Bellevue-NE	4.1 [§]	1.9	7.7	2
Bellevue-South	*	*	*	*
Bellevue-West	3.3 [§]	1.1	7.6	1
Black Diamond/Enumclaw/SE County	6.2	3.4	10.4	3
Bothell/Woodinville	*	*	*	*
Burien	4.5	2.6	7.3	3
Covington/Maple Valley	4.3	2.4	7.2	3
Des Moines/Normandy Park	4.5 [§]	2.2	8.3	2
East Federal Way	2.3 [§]	0.8	5.3	1
Fairwood	5.6 [§]	2.4	11.0	2
Federal Way	6.5	4.7	8.8	9
Fed Way-Central/Military Rd	7.1	4.8	10.1	6
Fed Way-Dash Pt	5.5	2.9	9.4	3
Issaquah	2.9 [§]	1.2	6.0	1
Kenmore/Lake Forest Park	3.1 [§]	1.1	6.6	1
Kent	5.9	4.4	7.6	11
Kent-East	6.4	3.7	10.4	3
Kent-SE	4.0	2.4	6.3	4
Kent-West	8.6	5.4	13.0	4
Kirkland	2.2 [§]	1.1	3.8	2
Kirkland	2.5 [§]	1.1	4.9	2
Kirkland North	*	*	*	*
Mercer Isle/Pt Cities	*	*	*	*
Newcastle/Four Creeks	4.9 [§]	2.0	10.1	1
North Highline	7.7 [§]	3.8	13.7	2
Redmond	3.3	1.8	5.4	3
Renton	4.0	2.8	5.6	7
Renton-East	3.2 [§]	1.4	6.2	2
Renton-North	3.8 [§]	1.7	7.2	2
Renton-South	4.7	2.8	7.4	4
Sammamish	2.4 [§]	0.9	5.2	1
SeaTac/Tukwila	4.7	2.8	7.3	4
Seattle	4.0	3.4	4.7	29
Ballard	3.6 [§]	1.8	6.2	2
Beacon/Georgetown/S Park	5.8	3.3	9.4	3
Capitol Hill/Eastlake	2.8 [§]	0.9	6.4	1
Central Seattle	5.6	3.2	9.2	3
Delridge	5.8	3.3	9.6	3
Downtown	5.4 [§]	2.3	10.5	2
Fremont/Greenlake	2 [§]	0.8	4.4	1
NE Seattle	4.0	2.2	6.9	3
North Seattle	3.6 [§]	1.8	6.4	2
NW Seattle	2.4 [§]	1.0	5.0	1
Queen Anne/Magnolia	3.1 [§]	1.4	5.9	2
SE Seattle	5.3	3.1	8.5	3
West Seattle	2.8 [§]	1.3	5.3	2
Shoreline	3.3 [§]	1.5	6.2	2
Snoqualmie/N.Bend/Skykomish	2.5 [§]	1.0	5.1	1
Vashon Island	*	*	*	*

Comparisons:

Higher than King County

Lower than King County

Notes:

* Too few cases to protect confidentiality and/or report reliable rates

§ Too few cases to meet precision standard, interpret with caution

CI is 95% Confidence Interval

Rate = Deaths per 1,000 live births

Prepared By: Public Health - Seattle & King County;
Assessment, Policy Development, & Evaluation, 1/2015

Infant mortality by comparison areas

Source: Linked Birth-Death Certificate Data, Washington State Department of Health, Center for Health Statistics

The Healthy People 2020 Objective for infant mortality is 6.0.

Place	Latest Available Year	Rate	Lower CI	Upper CI
United States	2010	6.1	N/A	N/A
Washington State	2012	5.1	4.6	5.6
King County	2012	4.1	3.3	5.0

Notes:

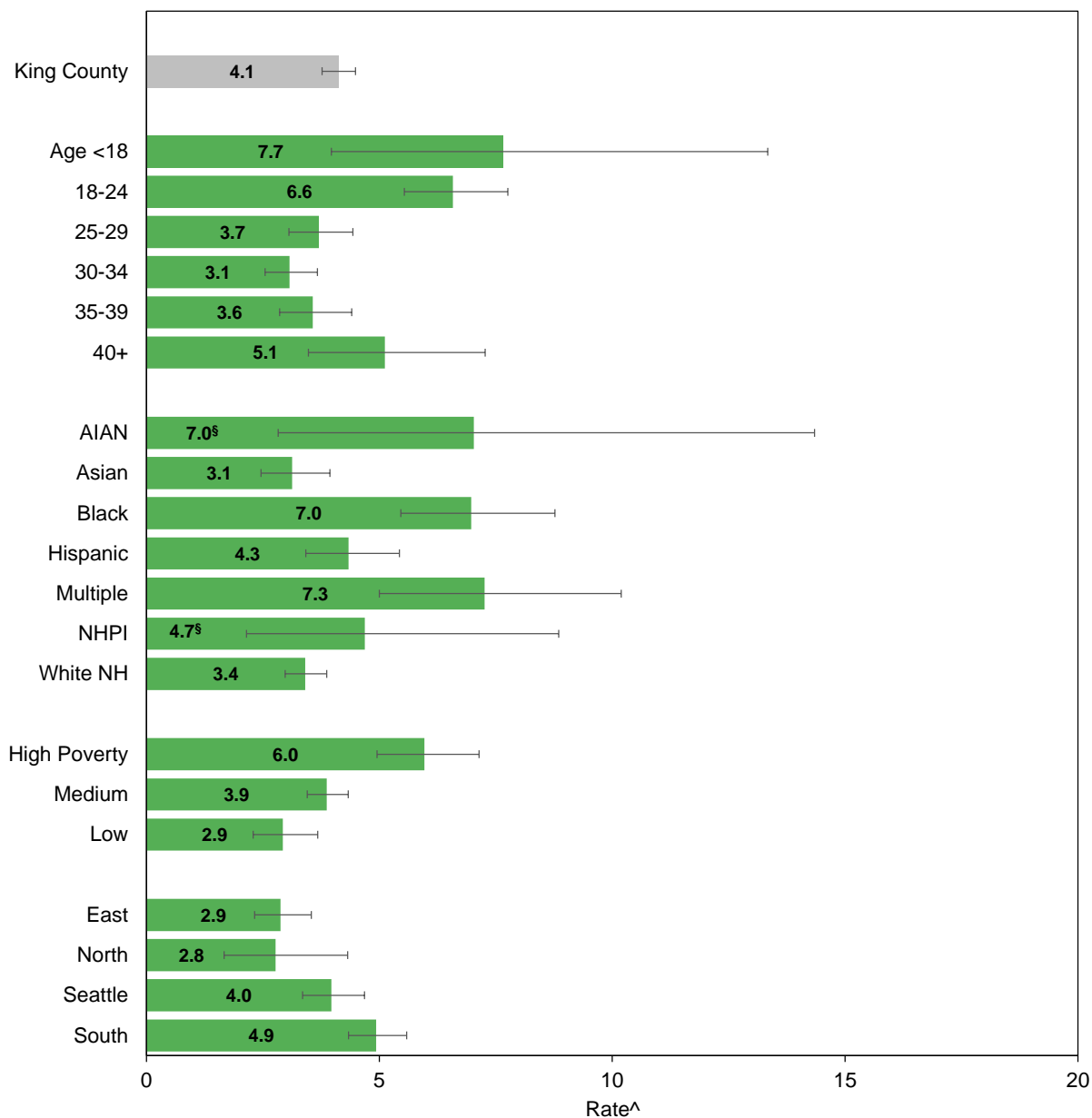
N/A: Not available

CI is 95% Confidence Interval

Rate = Deaths per 1,000 live births

Prepared By: Public Health - Seattle & King County;
Assessment, Policy Development, & Evaluation, 1/2015

Infant mortality, King County, 2008-2012 average



Source: Linked Birth-Death Certificate Data, Washington State Department of Health, Center for Health Statistics

Prepared by: Public Health Seattle & King County, Assessment, Policy Development, & Evaluation, 1/2015

[^]Rate = Deaths per 1,000 live births

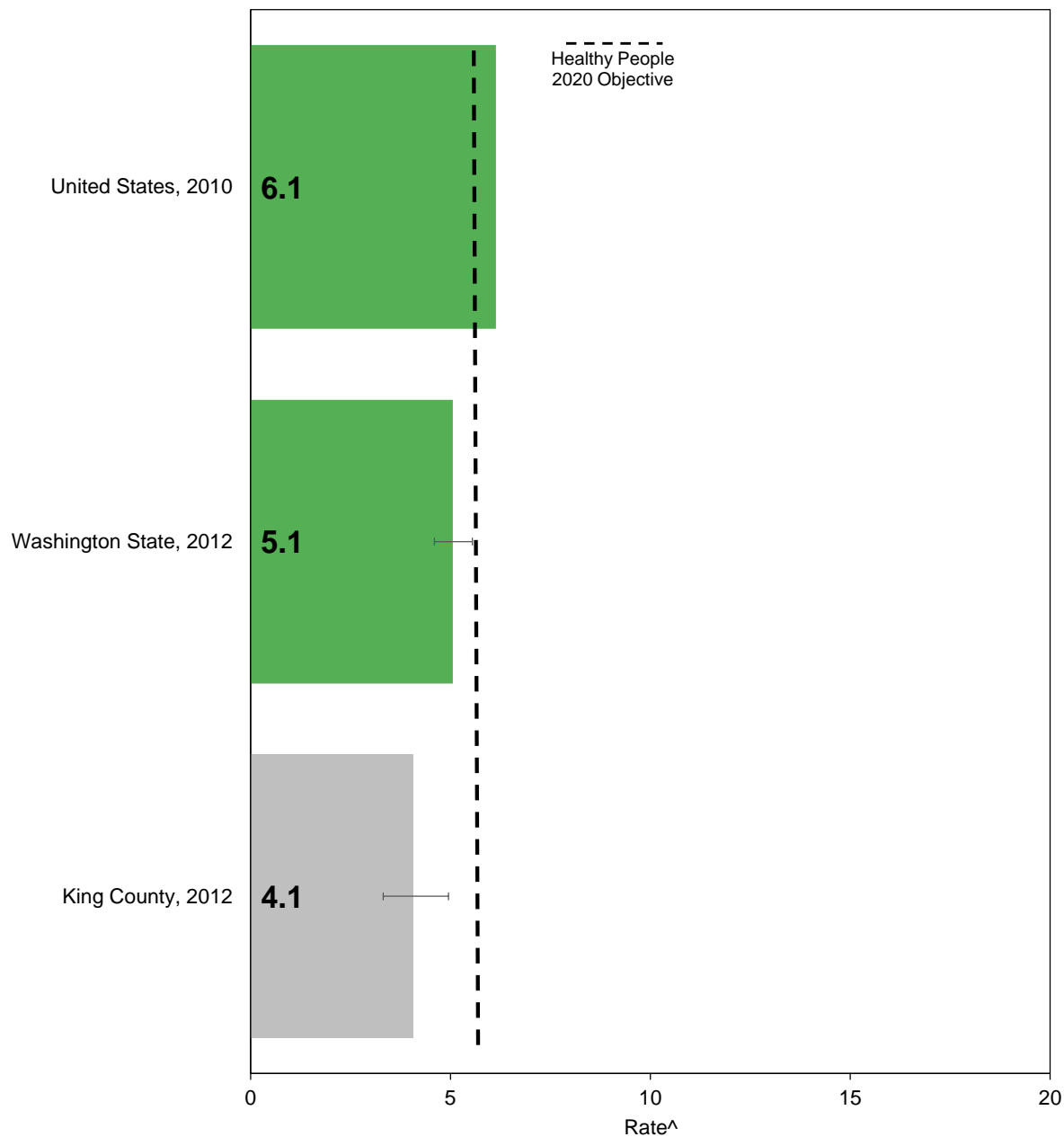
|-----|: Confidence interval shows range that includes true value 95% of the time

* Too few cases to protect confidentiality and/or report reliable rates

§ Too few cases to meet precision standard, interpret with caution

NH = non-Hispanic

Infant mortality by comparison areas



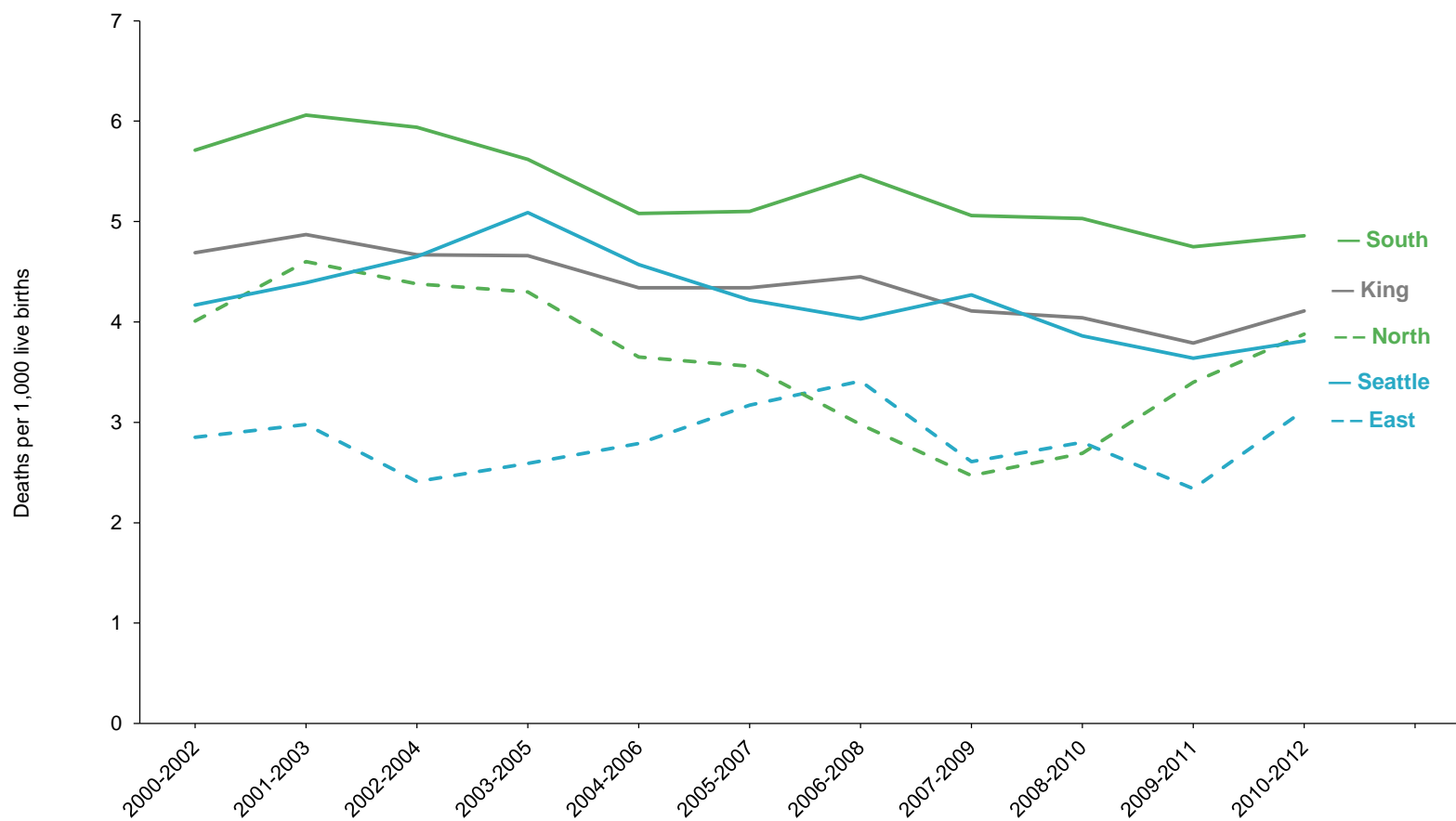
Source: Linked Birth-Death Certificate Data, Washington State Department of Health, Center for Health

Prepared by: Public Health Seattle & King County, Assessment, Policy Development, & Evaluation, 1/2015

^Rate = Deaths per 1,000 live births

|-----|: Confidence interval shows range that includes true value 95% of the time

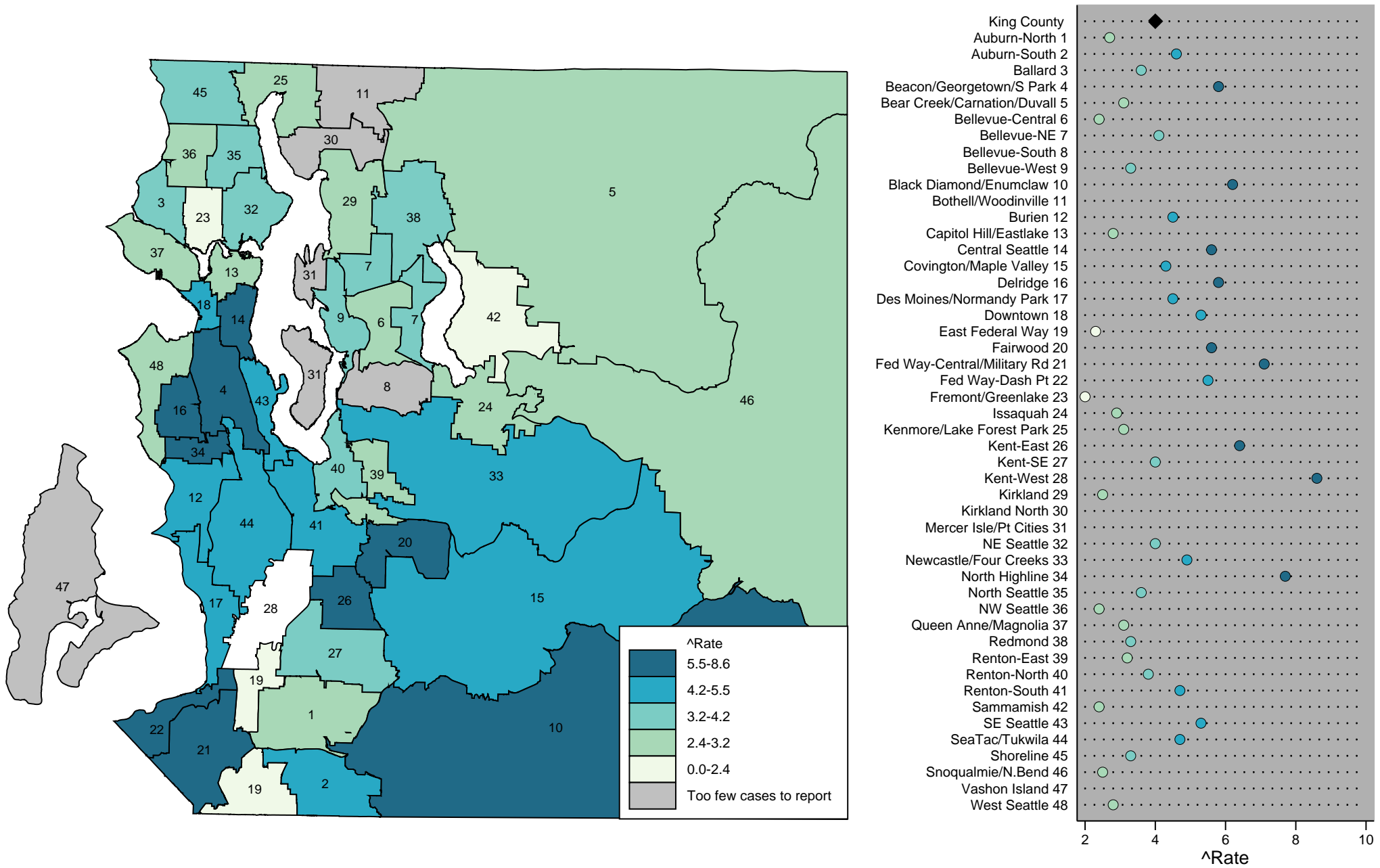
Infant mortality, King County, 2000-2012, three-year rolling averages



Source: Linked Birth-Death Certificate Data, Washington State Department of Health, Center for Health Statistics

Prepared by: Public Health Seattle & King County, Assessment, Policy Development, & Evaluation, 1/2015

Infant mortality by health reporting areas, King County, 2008-2012



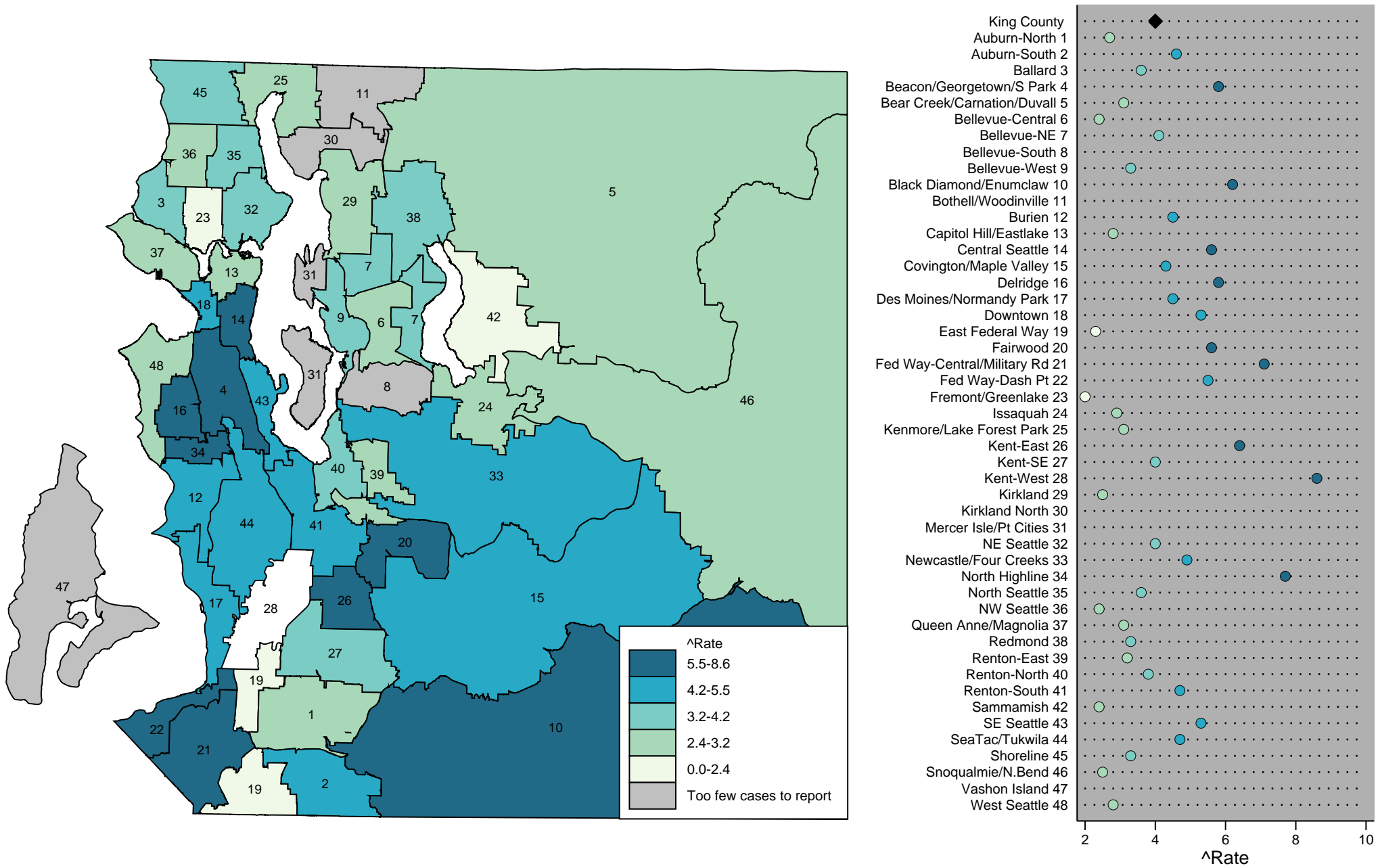
Note: HRA labels on the map match the chart on the right, listed in alphabetical order.

Source: Birth Certificate Data, Washington State Department of Health, Center for Health Statistics.

Prepared by Public Health - Seattle & King County, APDE on 11/4/14.

^Rate = deaths per 1,000 live births.

Infant mortality by health reporting areas, King County, 2008-2012



Note: HRA labels on the map match the chart on the right, listed in alphabetical order.

Source: Birth Certificate Data, Washington State Department of Health, Center for Health Statistics.

Prepared by Public Health - Seattle & King County, APDE on 11/4/14.

^Rate = deaths per 1,000 live births.

Early and adequate prenatal care King County, 2008-2012 average

Description: Percent of live births where prenatal care was started before the end of the 4th month, and 80% or more of the recommended number of prenatal care visits occurred.

Source: Birth Certificate Data, Washington State Department of Health, Center for Health Statistics

Most recent data (2012): 71.1% in King County, including 15,853 infants.

	Percent	Lower CI	Upper CI	Count per Year
King County	69.7	69.2	70.2	14826
Age				
<18	51.2	47.3	55.4	127
18-24	57.9	56.8	59.0	2049
25-29	67.9	67.0	68.9	3753
30-34	73.3	72.4	74.3	5058
35-39	75.7	74.5	76.9	3048
40+	76.2	73.9	78.7	782
Race/Ethnicity				
AIAN	57.4	52.3	62.7	96
Asian	71.1	69.9	72.3	2800
Black	59.2	57.6	60.8	1064
Hispanic	63.6	62.4	64.9	1920
Multiple	65.7	63.2	68.3	519
NHPI	41.3	38.3	44.4	143
White	71.8	71.2	72.5	10010
Neighborhood Poverty				
High	61.8	60.7	63.0	2202
Medium	69.9	69.3	70.5	9429
Low	75.8	74.6	77.0	3151
Region				
East	74.4	73.3	75.5	3522.2
North	75.0	72.6	77.5	725.0
Seattle	74.3	73.3	75.3	4490.6
South	63.9	63.2	64.6	6044.2

Notes:

N/A: Not available

* Too few cases to protect confidentiality and/or report reliable rates

§ Too few cases to meet precision standard, interpret with caution

CI is 95% Confidence Interval

Percent = Number per 100 live births

Prepared By: Public Health - Seattle & King County;

Assessment, Policy Development, & Evaluation, 1/2015

Early and adequate prenatal care

King County, 2008-2012 average

Source: Birth Certificate Data, Washington State Department of Health, Center for Health Statistics.

Health Reporting Area	Percent	Lower CI	Upper CI	Count per Year
King County	69.7	69.2	70.2	14826
Auburn	61.2	58.9	63.6	516
Auburn-North	62.4	59.2	65.7	289
Auburn-South	59.8	56.3	63.3	227
Bear Creek/Carnation/Duvall	75.3	71.7	79.1	327
Bellevue	69.3	67.3	71.3	948
Bellevue-Central	66.1	62.9	69.3	333
Bellevue-NE	71.8	68.0	75.7	270
Bellevue-South	73.8	68.8	79.0	165
Bellevue-West	68.0	63.6	72.6	179
Black Diamond/Enumclaw/SE County	72.8	69.2	76.5	304
Bothell/Woodinville	76.1	71.6	80.7	221
Burien	67.0	64.1	69.9	421
Covington/Maple Valley	70.7	67.8	73.8	428
Des Moines/Normandy Park	65.3	61.8	68.9	264
East Federal Way	60.9	57.6	64.5	243
Fairwood	70.7	66.2	75.4	186
Federal Way	55.5	53.7	57.4	693
Fed Way-Central/Military Rd	55.2	52.9	57.5	445
Fed Way-Dash Pt	56.2	53.1	59.4	248
Issaquah	77.2	73.5	81.1	323
Kenmore/Lake Forest Park	76.8	72.2	81.6	211
Kent	62.0	60.4	63.7	1103
Kent-East	62.1	59.0	65.4	291
Kent-SE	62.2	59.9	64.7	526
Kent-West	61.6	58.5	64.9	285
Kirkland	77.0	74.2	79.8	595
Kirkland	77.0	73.5	80.7	360
Kirkland North	76.9	72.5	81.4	235
Mercer Isle/Pt Cities	81.4	75.1	88.0	125
Newcastle/Four Creeks	71.3	66.7	76.1	181
North Highline	64.9	60.5	69.6	158
Redmond	75.0	72.2	78.0	506
Renton	67.3	65.5	69.2	1080
Renton-East	69.7	66.3	73.2	323
Renton-North	66.5	63.1	70.1	288
Renton-South	66.3	63.6	69.0	470
Sammamish	77.4	73.7	81.3	320
SeaTac/Tukwila	59.7	57.2	62.3	432
Seattle	74.3	73.3	75.3	4491
Ballard	73.8	70.7	77.0	431
Beacon/Georgetown/S Park	65.7	62.5	69.0	309
Capitol Hill/Eastlake	79.6	75.2	84.2	248
Central Seattle	74.5	71.0	78.2	339
Delridge	69.2	65.8	72.8	305
Downtown	71.7	67.1	76.6	180
Fremont/Greenlake	77.7	74.2	81.2	385
NE Seattle	79.4	76.1	82.8	435
North Seattle	75.7	72.2	79.3	346
NW Seattle	70.2	66.8	73.8	305
Queen Anne/Magnolia	80.1	76.6	83.7	393
SE Seattle	68.2	65.1	71.3	379
West Seattle	79.4	76.1	82.8	436
Shoreline	73.0	69.3	76.8	294
Snoqualmie/N.Bend/Skykomish	75.7	72.3	79.2	378
Vashon Island	69.8	59.9	80.8	36

Comparisons:

Higher than King County

Lower than King County

Notes:

* Too few cases to protect confidentiality and/or report reliable rates

§ Too few cases to meet precision standard, interpret with caution

CI is 95% Confidence Interval

Percent = Number per 100 live births

Prepared By: Public Health - Seattle & King County;
Assessment, Policy Development, & Evaluation, 1/2015

Early and adequate prenatal care by comparison areas

Source: Birth Certificate Data, Washington State Department of Health, Center for Health Statistics.

The Healthy People 2020 Objective for early and adequate prenatal care is 77.6%

Place	Latest Available Year	Percent	Lower CI	Upper CI
United States	2010	73.5	73.4	73.6
Washington State	2012	69.2	68.6	69.8
King County	2012	71.1	70.0	72.2

Notes:

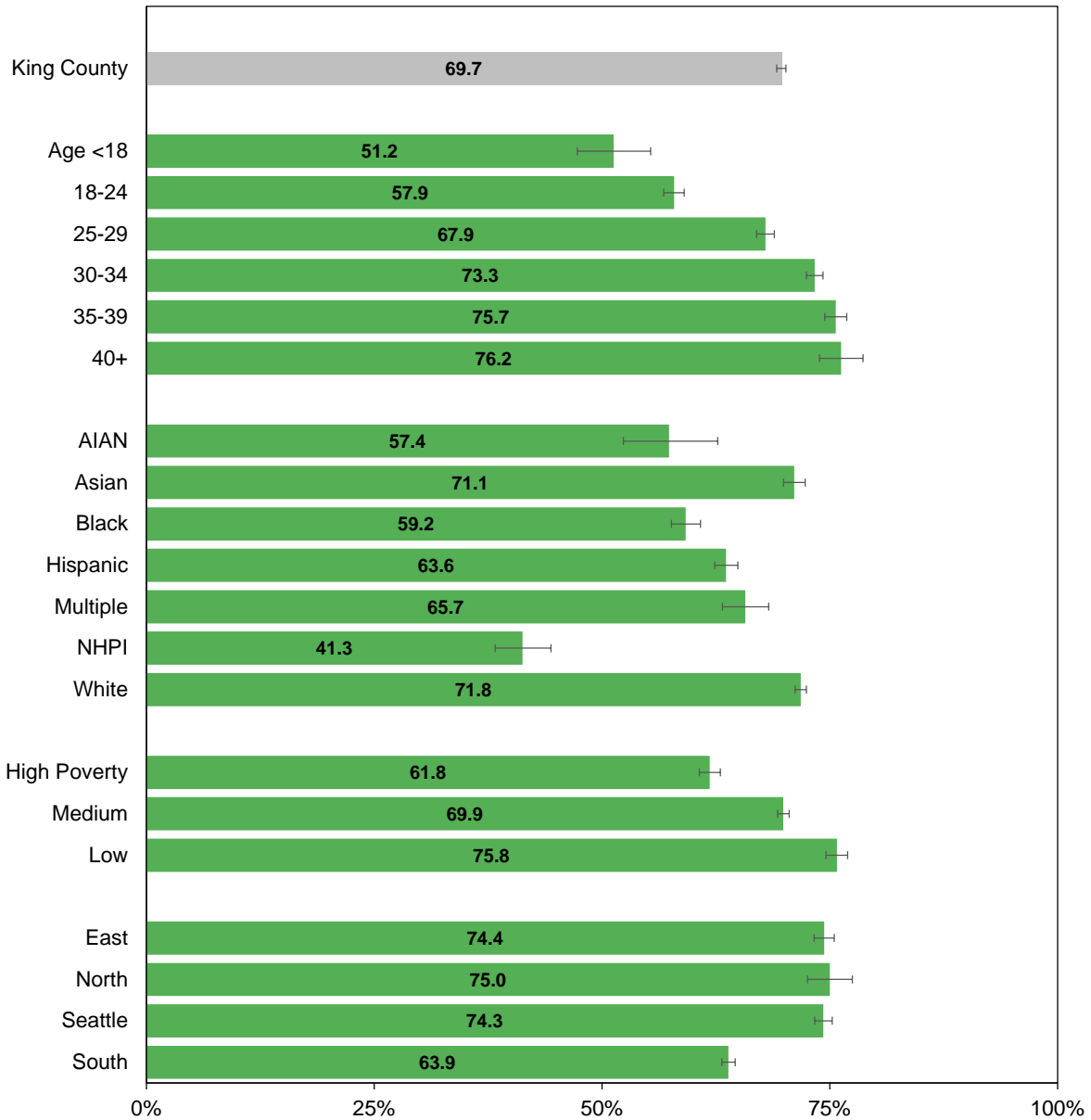
N/A: Not available

CI is 95% Confidence Interval

Percent = Number per 100 live births

Prepared By: Public Health - Seattle & King County;
Assessment, Policy Development, & Evaluation, 1/2015

Early and adequate prenatal care, King County, 2008-2012 average



Source: Birth Certificate Data, Washington State Department of Health, Center for Health Statistics

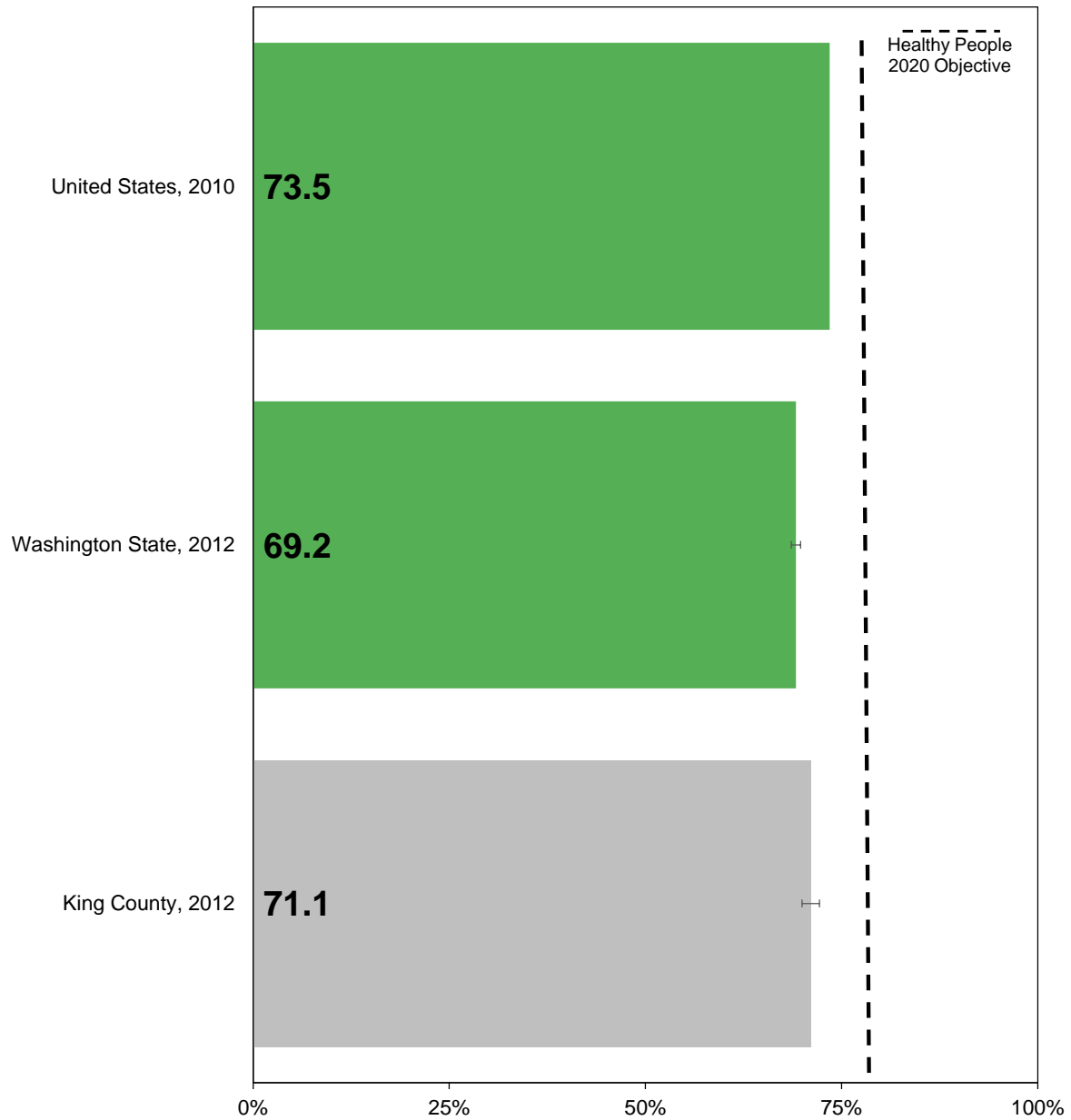
Prepared by: Public Health Seattle & King County, Assessment, Policy Development, & Evaluation, 1/2015

|-----|: Confidence interval shows range that includes true value 95% of the time

* Too few cases to protect confidentiality and/or report reliable rates

! Too few cases to meet precision standard, interpret with caution

Early and adequate prenatal care by comparison areas

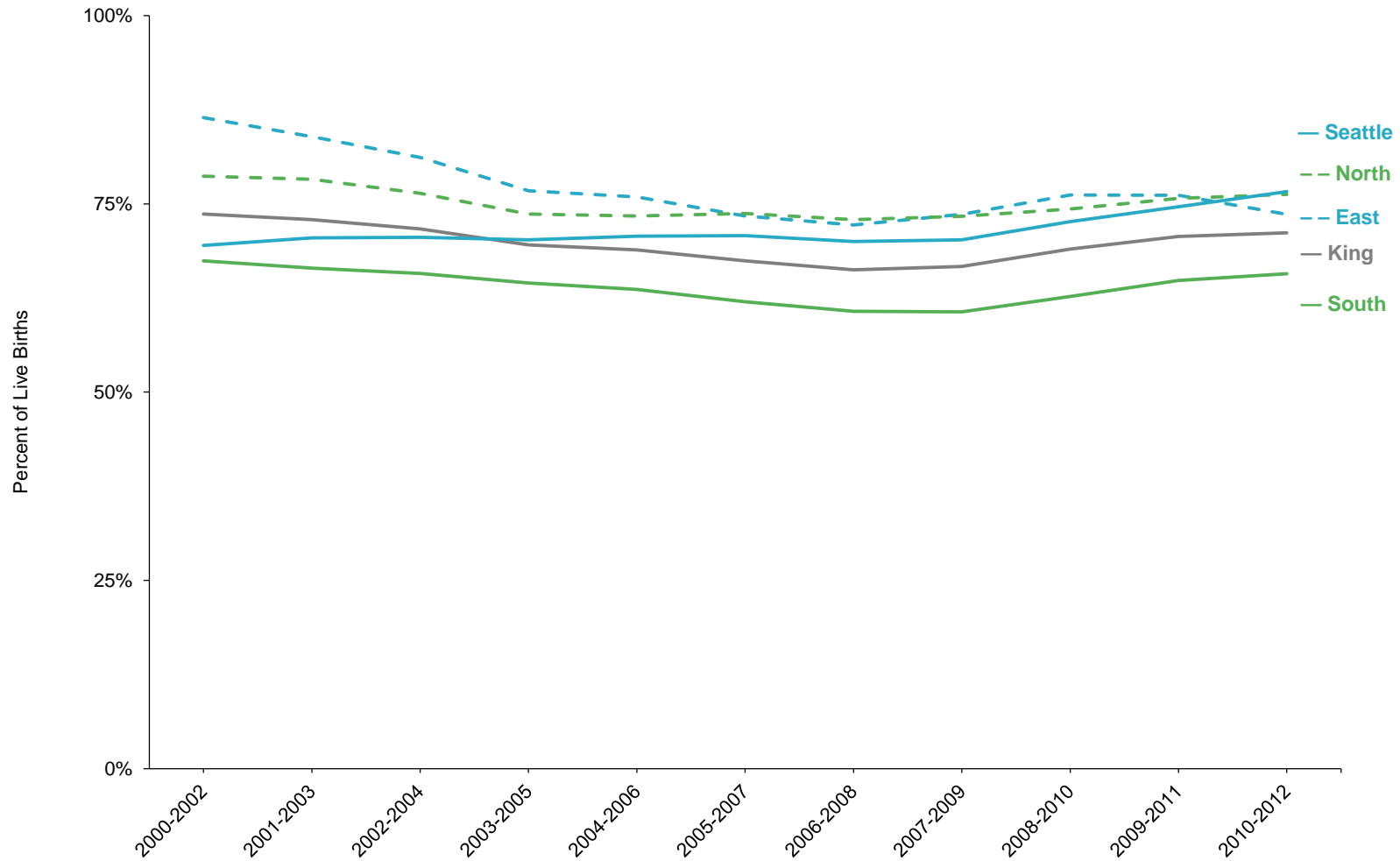


Source: Birth Certificate Data, Washington State Department of Health, Center for Health Statistics.

Prepared by: Public Health Seattle & King County, Assessment, Policy Development, & Evaluation, 1/2015

|-----|: Confidence interval shows range that includes true value 95% of the time

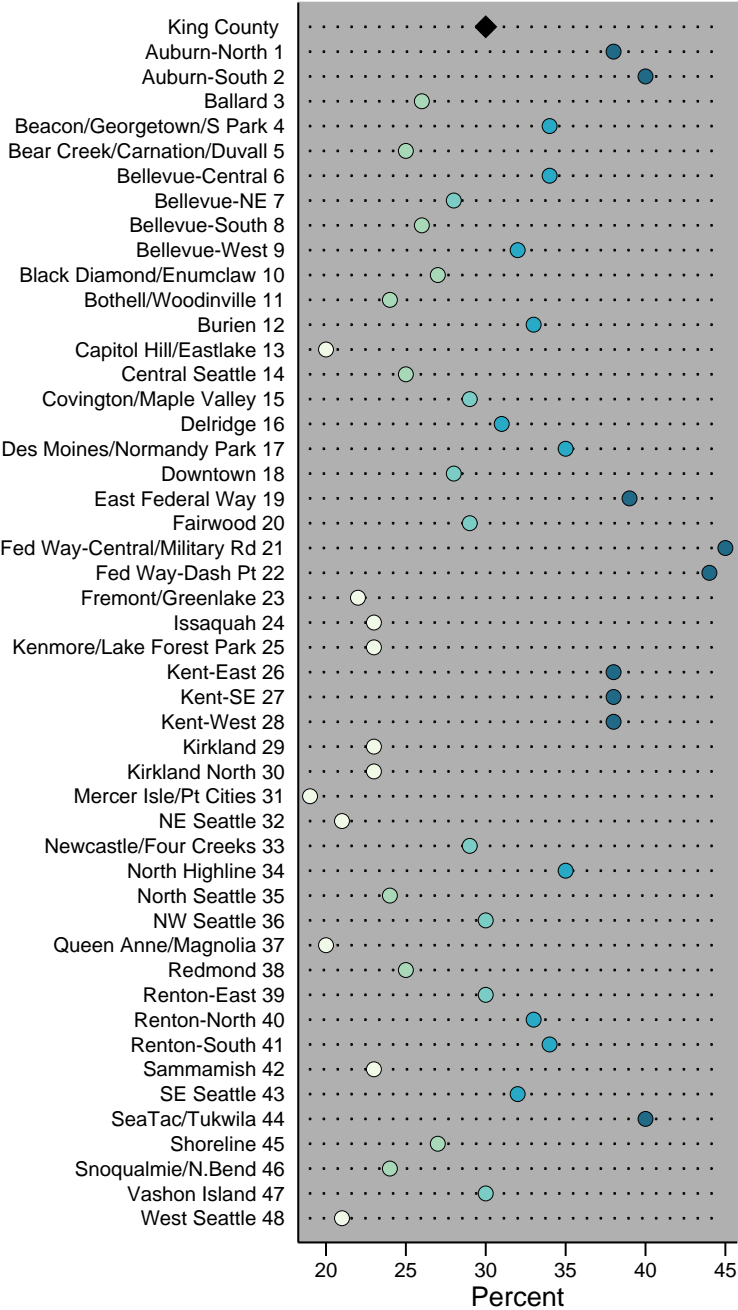
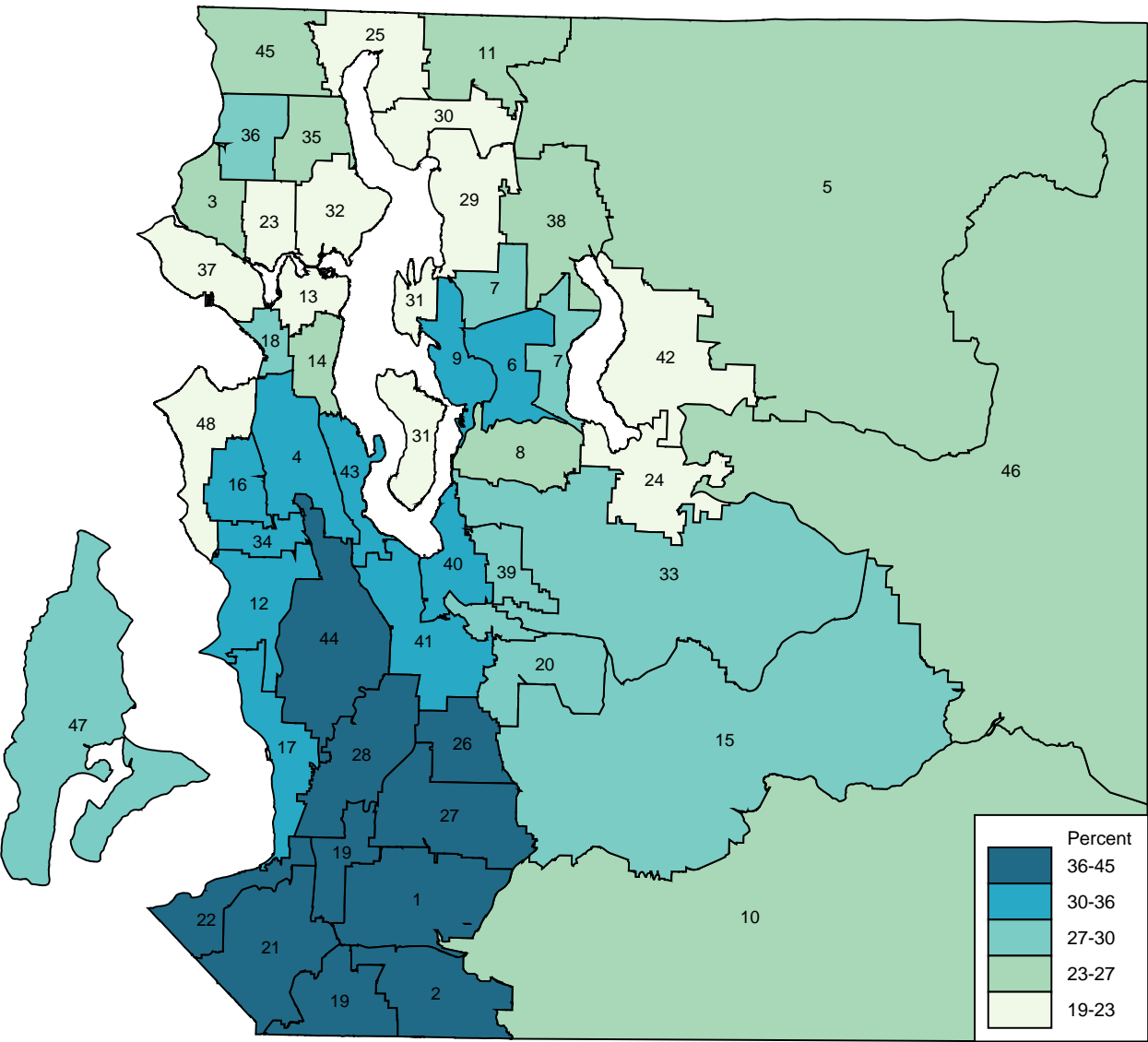
Early and adequate prenatal care, King County, 2000-2012, three-year rolling averages



Source: Birth Certificate Data, Washington State Department of Health, Center for Health Statistics

Prepared by: Public Health Seattle & King County, Assessment, Policy Development, & Evaluation, 1/2015

Early and adequate prenatal care by health reporting areas, King County, 2008-2012



Note: HRA labels on the map match the chart on the right, listed in alphabetical order.
Source: Birth Certificate Data, Washington State Department of Health, Center for Health Statistics.
Prepared by Public Health - Seattle & King County, APDE on 12/22/14.

Low birth weight (all births)

King County, 2008-2012 average

Description: Percent of all live births under 2500 grams, or 5 pounds 8 ounces

Source: Birth Certificate Data, Washington State Department of Health, Center for Health Statistics

Most recent data (2012): 6.3% in King County, including 1,563 infants.

	Percent	Lower CI	Upper CI	Count per Year
King County (all live births)	6.4	6.3	6.6	1599
Age				
<18	6.9	5.6	8.4	19
18-24	6.5	6.2	6.9	263
25-29	5.9	5.6	6.2	376
30-34	6.0	5.8	6.3	487
35-39	7.0	6.6	7.3	334
40+	9.4	8.7	10.2	116
Race/Ethnicity				
AIAN	7.5	5.9	9.4	15
Asian	7.4	7.1	7.8	346
Black	9.3	8.7	9.9	191
Hispanic	5.7	5.4	6.1	200
Multiple	7.4	6.6	8.2	67
NHPI	5.6	4.6	6.8	22
White	5.8	5.6	5.9	936
Neighborhood Poverty				
High	6.8	6.4	7.1	272
Medium	6.5	6.3	6.6	1019
Low	6.0	5.7	6.3	297
Region				
East	6.2	5.9	6.5	362.6
North	6.3	5.7	6.9	85.8
Seattle	6.4	6.2	6.7	461.0
South	6.6	6.4	6.8	678.6

Notes:

N/A: Not available

* Too few cases to protect confidentiality and/or report reliable rates

§ Too few cases to meet precision standard, interpret with caution

CI is 95% Confidence Interval

Percent = Number low birth weight per 100 live births

Prepared By: Public Health - Seattle & King County;

Assessment, Policy Development, & Evaluation, 1/2015

Low birth weight (all births) by health reporting areas

King County, 2008-2012 average

Source: Birth Certificate Data, Washington State Department of Health, Center for Health Statistics.

Health Reporting Area	Percent	Lower CI	Upper CI	Count per Year
King County	6.4	6.3	6.6	1599
Auburn	6.2	5.5	6.9	59
Auburn-North	7.0	6.1	8.1	37
Auburn-South	5.1	4.2	6.2	22
Bear Creek/Carnation/Duvall	6.0	5.2	7.0	35
Bellevue	6.7	6.1	7.3	105
Bellevue-Central	6.9	6.0	8.0	40
Bellevue-NE	6.7	5.6	7.8	29
Bellevue-South	6.5	5.2	8.1	16
Bellevue-West	6.4	5.2	7.8	19
Black Diamond/Enumclaw/SE County	5.4	4.5	6.5	24
Bothell/Woodinville	6.3	5.3	7.5	27
Burien	6.1	5.3	6.9	43
Covington/Maple Valley	6.5	5.7	7.5	42
Des Moines/Normandy Park	6.3	5.3	7.4	28
East Federal Way	6.0	5.0	7.2	26
Fairwood	6.8	5.5	8.3	19
Federal Way	6.1	5.5	6.7	80
Fed Way-Central/Military Rd	6.2	5.4	6.9	52
Fed Way-Dash Pt	6.0	5.0	7.0	28
Issaquah	5.4	4.5	6.4	26
Kenmore/Lake Forest Park	5.6	4.6	6.8	22
Kent	7.0	6.5	7.5	133
Kent-East	6.5	5.6	7.6	33
Kent-SE	7.0	6.3	7.8	63
Kent-West	7.4	6.4	8.5	38
Kirkland	6.0	5.4	6.7	66
Kirkland	5.8	5.0	6.7	37
Kirkland North	6.4	5.4	7.5	29
Mercer Isle/Pt Cities	6.1	4.6	7.9	11
Newcastle/Four Creeks	6.2	5.0	7.7	18
North Highline	7.6	6.2	9.1	22
Redmond	6.4	5.7	7.2	58
Renton	7.0	6.5	7.6	122
Renton-East	6.8	5.8	7.9	34
Renton-North	6.5	5.5	7.6	31
Renton-South	7.4	6.6	8.4	57
Sammamish	6.3	5.4	7.4	31
SeaTac/Tukwila	7.1	6.3	7.9	57
Seattle	6.4	6.2	6.7	461
Ballard	6.6	5.7	7.5	44
Beacon/Georgetown/S Park	6.2	5.3	7.2	34
Capitol Hill/Eastlake	6.7	5.6	8.0	24
Central Seattle	7.0	6.0	8.1	37
Delridge	6.8	5.8	7.8	35
Downtown	7.7	6.4	9.2	23
Fremont/Greenlake	6.3	5.4	7.3	37
NE Seattle	5.6	4.8	6.5	36
North Seattle	6.9	6.0	7.8	42
NW Seattle	5.8	5.0	6.8	33
Queen Anne/Magnolia	5.8	4.9	6.7	33
SE Seattle	7.0	6.1	7.9	44
West Seattle	5.9	5.1	6.8	37
Shoreline	6.7	5.8	7.8	37
Snoqualmie/N.Bend/Skykomish	5.4	4.6	6.4	31
Vashon Island	7.2	4.5	11.0	4

Comparisons:

Higher than King County

Lower than King County

Notes:

* Too few cases to protect confidentiality and/or report reliable rates

§ Too few cases to meet precision standard, interpret with caution

CI is 95% Confidence Interval

Percent = Number low birth weight per 100 live births

Prepared By: Public Health - Seattle & King County;
Assessment, Policy Development, & Evaluation, 1/2015

Low birth weight (all births) by comparison areas

Source: Birth Certificate Data, Washington State Department of Health, Center for Health Statistics.

The Healthy People 2020 Objective for low birth weight is 7.8%

Place	Latest Available Year	Percent	Lower CI	Upper CI
United States	2010	8.2	8.1	8.2
Washington State	2012	6.1	6.0	6.3
King County	2012	6.3	5.9	6.6

Notes:

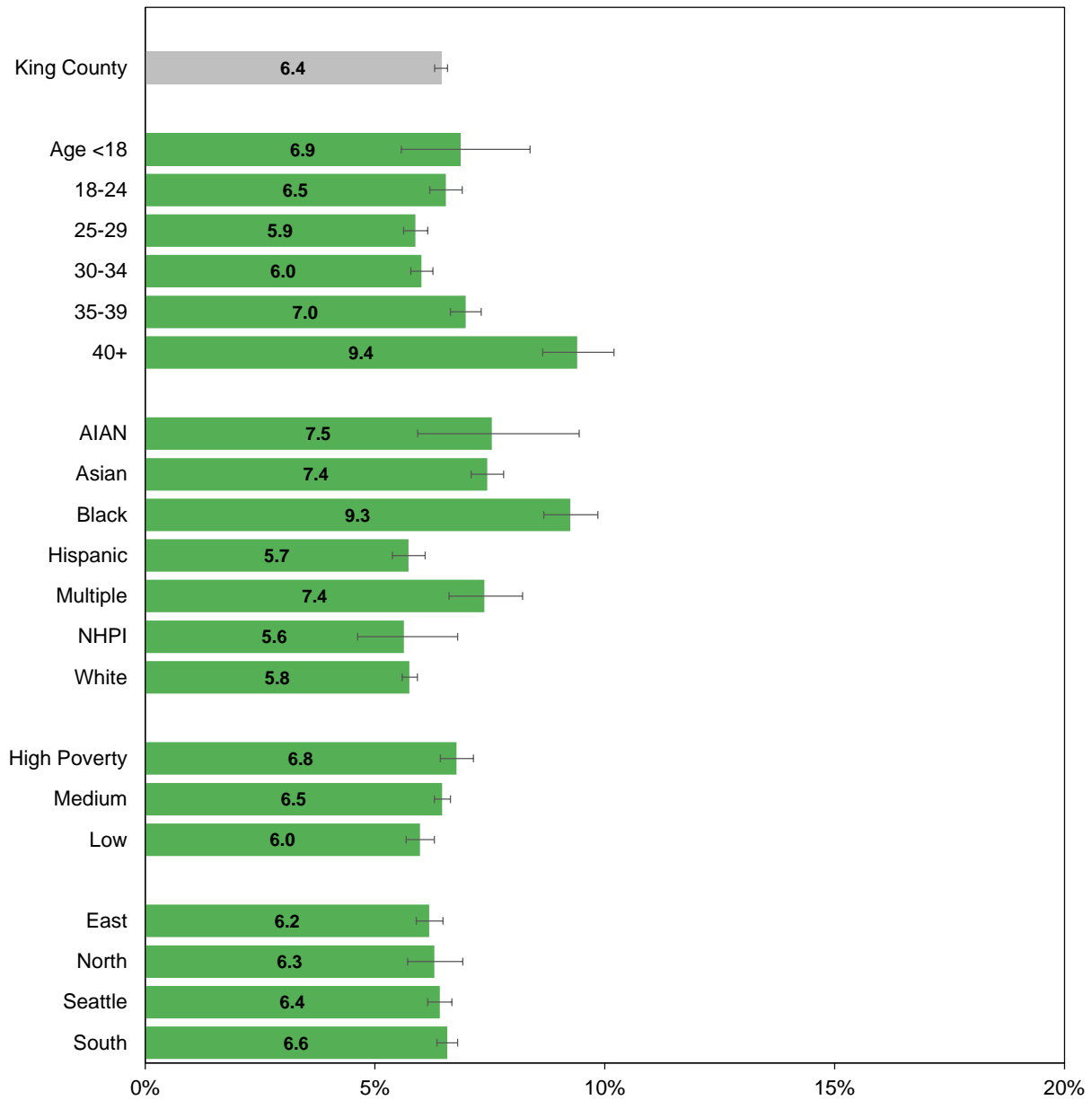
N/A: Not available

CI is 95% Confidence Interval

Percent = Number low birth weight per 100 live births

Prepared By: Public Health - Seattle & King County;
Assessment, Policy Development, & Evaluation, 1/2015

Low birth weight (all births), King County, 2008-2012 average



Source: Birth Certificate Data, Washington State Department of Health, Center for Health Statistics

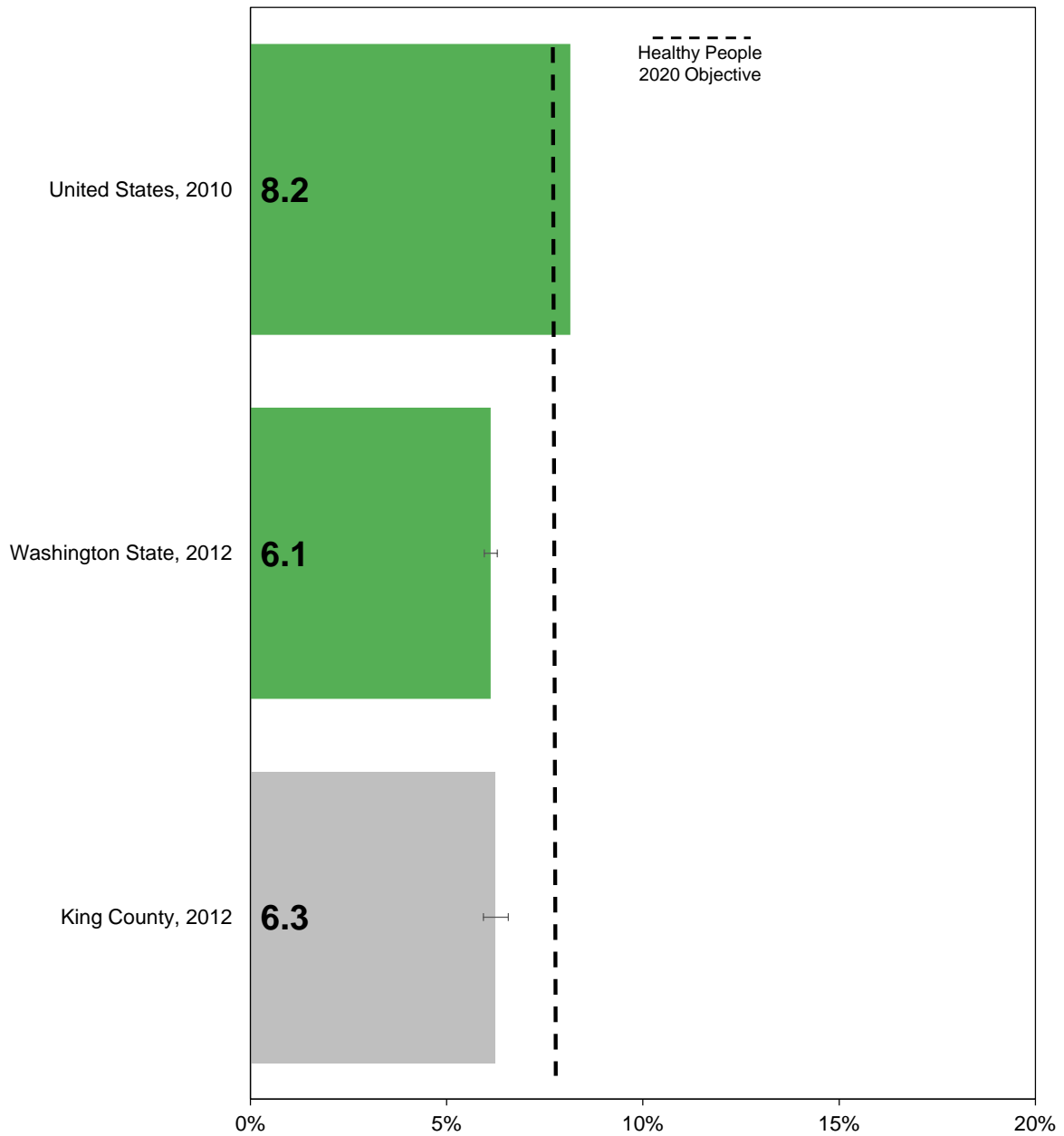
Prepared by: Public Health Seattle & King County, Assessment, Policy Development, & Evaluation, 1/2015

|----|: Confidence interval shows range that includes true value 95% of the time

* Too few cases to protect confidentiality and/or report reliable rates

§ Too few cases to meet precision standard, interpret with caution

Low birth weight (all births) by comparison areas

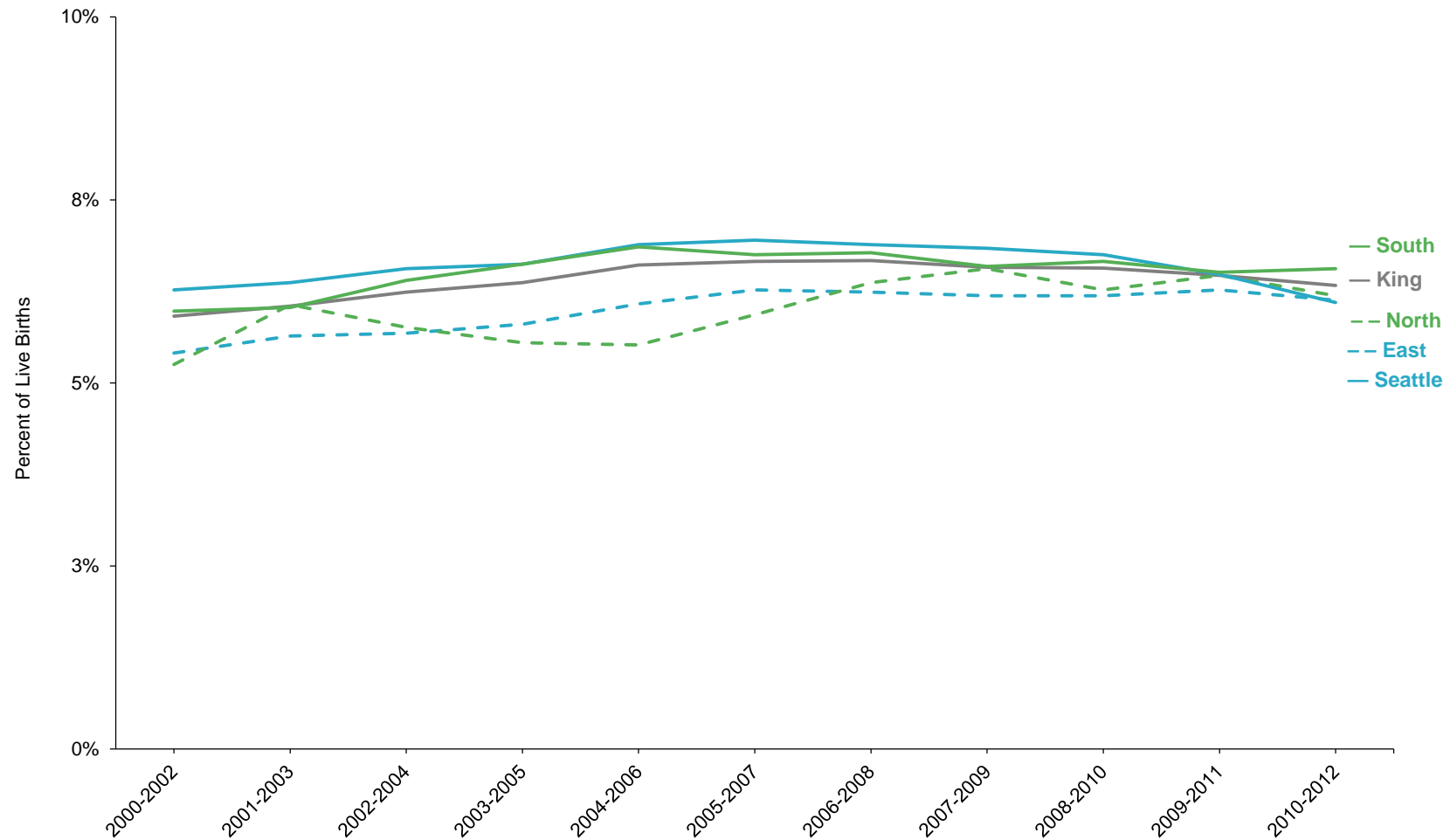


Source: Birth Certificate Data, Washington State Department of Health, Center for Health Statistics.

Prepared by: Public Health Seattle & King County, Assessment, Policy Development, & Evaluation, 1/2015

|-----|: Confidence interval shows range that includes true value 95% of the time

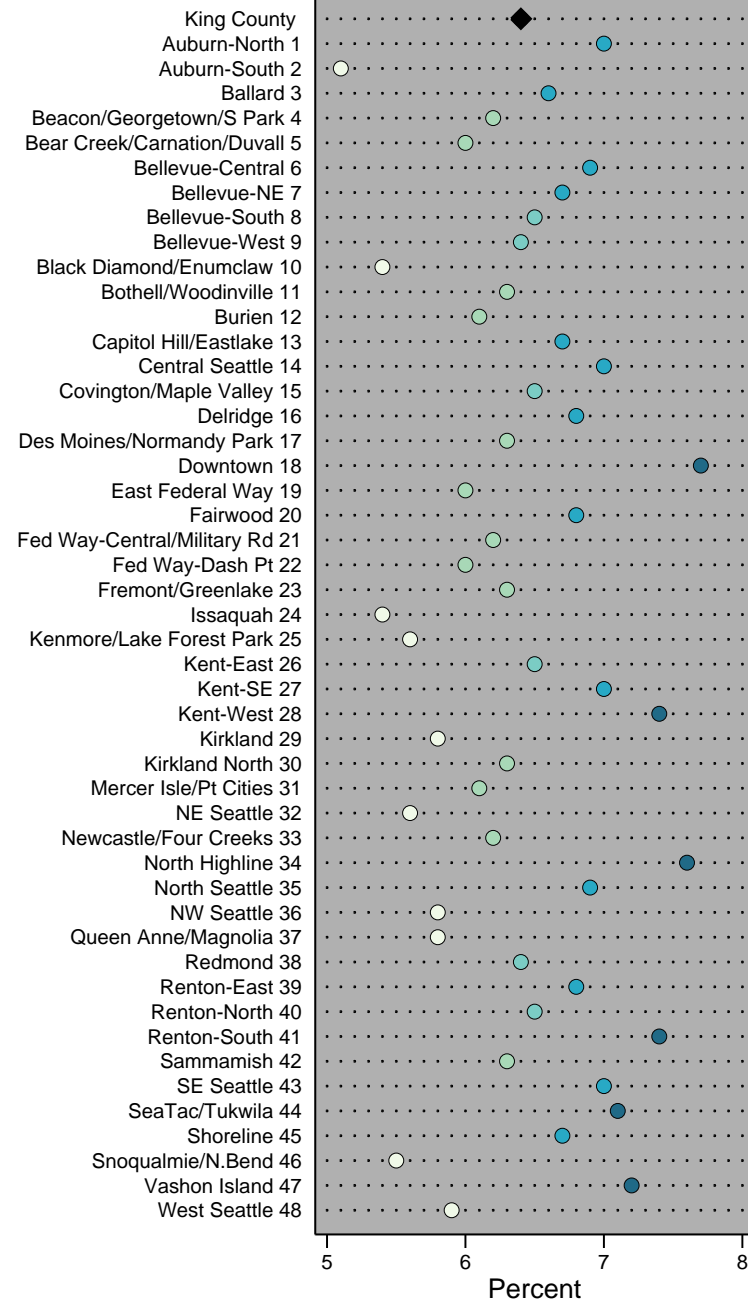
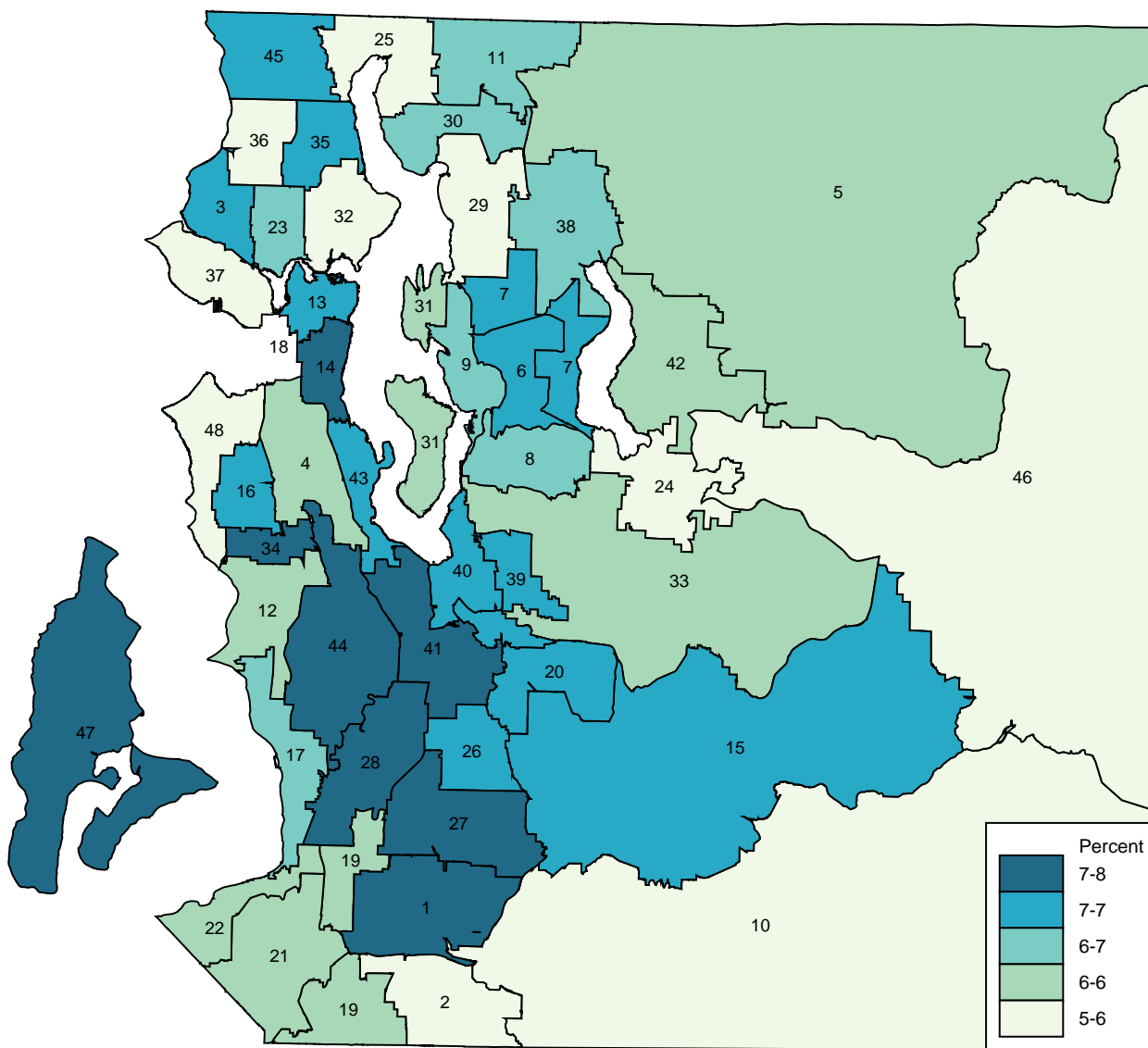
**Low birth weight (all births),
King County, 2000-2012, three-year rolling averages**



Source: Birth Certificate Data, Washington State Department of Health, Center for Health Statistics

Prepared by: Public Health Seattle & King County, Assessment, Policy Development, & Evaluation, 1/2015

Low birth weight by health reporting areas, King County, 2008-2012



Note: HRA labels on the map match the chart on the right, listed in alphabetical order.

Source: Birth Certificate Data, Washington State Department of Health, Center for Health Statistics.

Prepared by Public Health - Seattle & King County, APDE on 11/4/14.