

How to use BCCHP screening guides

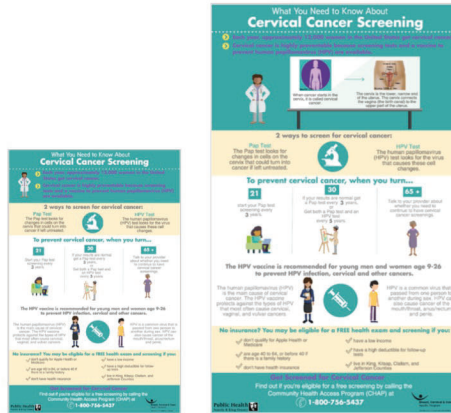
Breast Cancer

Cervical Cancer

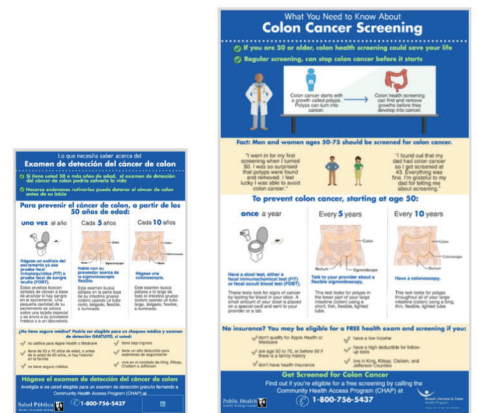
Colon Cancer



8.5 x 5.5 inches 11x14 and 14x17 inches



8.5 x 5.5 inches 11x14 and 14x17 inches



8.5 x 5.5 inches 11x14 and 14x17 inches

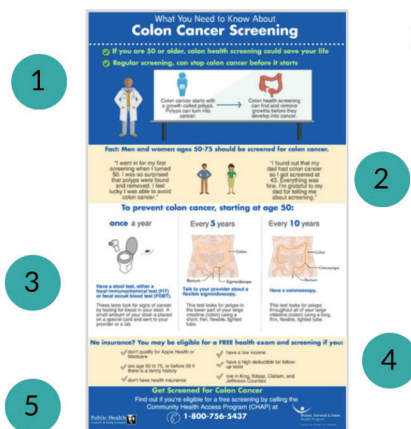
Screening guides are available in 3 sizes and 2 languages (Spanish and English) for use in clinical and community settings.

The smallest size (8.5 x 5.5) is the perfect size for clients to take home or to distribute at community health events. The larger sizes (11 x 14 and 14 x 17), are large enough to display as posters in waiting areas, exam rooms, bathrooms, and at community health events.

How to use

These guides were created to enhance health literacy — especially the importance of early detection through screening for breast, cervical, and colon cancer.

These guides should be used for an interactive conversation by healthcare providers and outreach workers with their clients and the community.



Each screening guide is divided into 5 sections:

- 1) Facts and quick description on the type of cancer
- 2) Narrative about when to start screening
- 3) Detailed description of ways to screen for certain cancers (i.e. mammogram, Pap Test, colonoscopy)
- 4) Eligibility requirements for free health exams
- 5) Contact information and who to call to learn more about BCCHP

How to customize and print

The bottom portion of the smaller (8.5 x 5.5) screening guides can be customized with your contact information.

Email jodi.olson@kingcounty.gov or cristina.delalma@kingcounty.gov your contact information (name, location, and phone number).

An email will be sent with a pdf attachment for your printing needs.

Get Screened for Breast Cancer

For more information reach out to name at location

phone number

Saving Lives Through Early Detection

How to order

You can order screening guides from BCCHP by emailing (lisa.sokanoff@kingcounty.gov) Each order will include:
 (5) 11x14 posters, (5) 14 x17 posters, and (50) 8.5 x 5.5 cards
 (please specify if you want breast, cervical, and/or colon cancer screening guides)

How to download

You can download a pdf version of the screening guides online by visiting the BCCHP webpage on Public Health — Seattle & King County's website.



For questions or more information contact BCCHP