

August 4, 2026

Official Primary and Special Election Ballot
King County, Washington

This ballot contains all
races and measures in
King County. You may
not be eligible to vote
for some races or
measures.

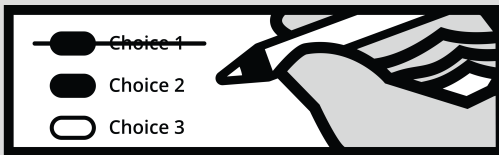
Instructions

How to vote



For each question, fill in *one* oval next to your choice. If you fill in more than one oval, your vote cannot be counted.

How to correct a mistake



To make a correction, draw a line through the entire choice. If you'd like to make a new choice, completely fill in another oval.

Optional write-in

To add a new candidate, fill in the oval next to the write-in line and print the name on the write-in line.

Begin voting here



READ: Each candidate for partisan office may state a political party that the candidate prefers. A candidate's preference does not imply that the candidate is nominated or endorsed by the party, or that the party approves of or associates with that candidate.

Federal

United States Representative Congressional District No. 7

partisan office
vote for one

- David W. Blomstrom**
(Prefers Fifth Republic Party)
- Pramila Jayapal**
(Prefers Democratic Party)
- Nirav Sheth**
(Prefers Republican Party)
- Gwen Kirkland**
(Prefers Democratic Party)
- _____

Federal

United States Representative Congressional District No. 1

partisan office
vote for one

- Benjamin Kincaid**
(Prefers Democratic Party)
- Suzan DelBene**
(Prefers Democratic Party)
- Bryce Nickel**
(Prefers Democratic Party)
- James Etzkorn**
(Prefers Independent Party)
- Hunter Gordon**
(Prefers Democratic Party)
- Mary Silva**
(Prefers Republican Party)
- Catherine Hildebrand**
(Prefers Democratic Party)
- _____

United States Representative Congressional District No. 8

partisan office
vote for one

- Kim Schrier**
(Prefers Democratic Party)
- Trinh Ha**
(Prefers Republican Party)
- Spencer Meline**
(Prefers Republican Party)
- Keith Arnold**
(Prefers Democratic Party)
- Andres Valleza**
(Prefers Republican Party)
- Bob Hagglund**
(Prefers Republican Party)
- _____

Continue voting other side



1 of 12

| Federal | State | State |
|--|--|--|
| <p>United States Representative Congressional District No. 9 partisan office vote for one</p> <p><input type="checkbox"/> Jacob Perasso (Prefers Socialist Workers Party)</p> <p><input type="checkbox"/> Kshama Sawant (Prefers Independent Party)</p> <p><input type="checkbox"/> Melissa Chaudhry (Prefers Democratic Party)</p> <p><input type="checkbox"/> Doug Basler (Prefers Republican Party)</p> <p><input type="checkbox"/> Adam Smith (Prefers Democratic Party)</p> <p><input type="checkbox"/></p> | <p>Legislative District No. 5 Representative Position No. 2 partisan office vote for one</p> <p><input type="checkbox"/> Patrick Peacock (Prefers Republican Party)</p> <p><input type="checkbox"/> Lisa Callan (Prefers Democratic Party)</p> <p><input type="checkbox"/></p> | <p>Legislative District No. 30 Representative Position No. 1 partisan office vote for one</p> <p><input type="checkbox"/> Jamila E. Taylor (Prefers Democratic Party)</p> <p><input type="checkbox"/> Tiffany Bowyer (Prefers Republican Party)</p> <p><input type="checkbox"/></p> |
| <p>State</p> | <p>Legislative District No. 11 Representative Position No. 1 partisan office vote for one</p> <p><input type="checkbox"/> Ashley Fedan (Prefers Democratic Party)</p> <p><input type="checkbox"/> Christian Rombough (Prefers Republican Party)</p> <p><input type="checkbox"/> David Hackney (Prefers Democratic Party)</p> <p><input type="checkbox"/></p> | <p>Legislative District No. 30 Representative Position No. 2 partisan office vote for one</p> <p><input type="checkbox"/> Kristine Reeves (Prefers Democratic Party)</p> <p><input type="checkbox"/> Paul McDaniel (Prefers Independent Party)</p> <p><input type="checkbox"/></p> |
| <p>Legislative District No. 1 Representative Position No. 1 partisan office vote for one</p> <p><input type="checkbox"/> Davina Duerr (Prefers Democratic Party)</p> <p><input type="checkbox"/> Maggie Wang (Prefers Republican Party)</p> <p><input type="checkbox"/></p> | <p>Legislative District No. 11 Representative Position No. 2 partisan office vote for one</p> <p><input type="checkbox"/> Steve Bergquist (Prefers Democratic Party)</p> <p><input type="checkbox"/></p> | <p>Legislative District No. 31 State Senator partisan office vote for one</p> <p><input type="checkbox"/> Tamara Stramel (Prefers Democratic Party)</p> <p><input type="checkbox"/> Phil Fortunato (Prefers Republican Party)</p> <p><input type="checkbox"/></p> |
| <p>Legislative District No. 1 Representative Position No. 2 partisan office vote for one</p> <p><input type="checkbox"/> Jeff Lyon (Prefers Libertarian Party)</p> <p><input type="checkbox"/> Shelley Kloba (Prefers Democratic Party)</p> <p><input type="checkbox"/> Cliff Moon (Prefers Republican Party)</p> <p><input type="checkbox"/> Jenne Alderks (Prefers Democratic Party)</p> <p><input type="checkbox"/></p> | <p>Legislative District No. 12 Representative Position No. 1 partisan office vote for one</p> <p><input type="checkbox"/> Brian Burnett (Prefers Republican Party)</p> <p><input type="checkbox"/> Stacy Willoughby (Prefers Democratic Party)</p> <p><input type="checkbox"/></p> | <p>Legislative District No. 31 Representative Position No. 1 partisan office vote for one</p> <p><input type="checkbox"/> Drew Stokesbary (Prefers Republican Party)</p> <p><input type="checkbox"/> Stephen Szczurko-Walton (Prefers Democratic Party)</p> <p><input type="checkbox"/></p> |
| <p>Legislative District No. 5 Representative Position No. 1 short and full term partisan office vote for one</p> <p><input type="checkbox"/> Topher Leritz (States No Party Preference)</p> <p><input type="checkbox"/> Zach Hall (Prefers Democratic Party)</p> <p><input type="checkbox"/> Aimee Warmerdam (Prefers Democratic Party)</p> <p><input type="checkbox"/> Michelle Bennett (Prefers Republican Party)</p> <p><input type="checkbox"/></p> | <p>Legislative District No. 12 Representative Position No. 2 partisan office vote for one</p> <p><input type="checkbox"/> Mike Steele (Prefers Republican Party)</p> <p><input type="checkbox"/> Adam James (Prefers Republican Party)</p> <p><input type="checkbox"/> Maggie Adams (Prefers Democratic Party)</p> <p><input type="checkbox"/></p> | <p>Legislative District No. 31 Representative Position No. 2 partisan office vote for one</p> <p><input type="checkbox"/> John Bielka (Prefers Democrat Party)</p> <p><input type="checkbox"/> Joshua Penner (Prefers Republican Party)</p> <p><input type="checkbox"/></p> |
| | <p>Legislative District No. 30 State Senator partisan office vote for one</p> <p><input type="checkbox"/> Claire Wilson (Prefers Democratic Party)</p> <p><input type="checkbox"/> Michael Rutland (Prefers Republican Party)</p> <p><input type="checkbox"/></p> | <p>Continue voting other side →</p> <p>2 of 12</p> |


| State | State | State |
|---|--|--|
| Legislative District No. 32 State Senator partisan office vote for one <input type="radio"/> Cindy Ryu (Prefers Democratic Party) <input type="radio"/> Ira McBee (Prefers Republican Party) <input type="radio"/> Jesse Salomon (Prefers Democratic Party) <input type="radio"/> _____ | Legislative District No. 33 Representative Position No. 2 partisan office vote for one <input type="radio"/> Mia Su-Ling Gregerson (Prefers Democratic Party) <input type="radio"/> Yuri Marinchik (Prefers Republican Party) <input type="radio"/> Alex Andrade (Prefers Democratic Party) <input type="radio"/> _____ | Legislative District No. 36 Representative Position No. 2 partisan office vote for one <input type="radio"/> Liz Berry (Prefers Democratic Party) <input type="radio"/> _____ |
| Legislative District No. 32 Representative Position No. 1 partisan office vote for one <input type="radio"/> Jenna Nand (Prefers Democratic Party) <input type="radio"/> Will Chen (Prefers Democratic Party) <input type="radio"/> Keith Scully (Prefers Democratic Party) <input type="radio"/> Danica Noble (Prefers Democratic Party) <input type="radio"/> Lisa Rezac (Prefers Republican Party) <input type="radio"/> Chris Bloomquist (Prefers Democratic Party) <input type="radio"/> _____ | Legislative District No. 34 State Senator partisan office vote for one <input type="radio"/> Emily Alvarado (Prefers Democratic Party) <input type="radio"/> _____ | Legislative District No. 37 State Senator partisan office vote for one <input type="radio"/> Chipalo Street (Prefers Democratic Party) <input type="radio"/> Tatiana Brown (Prefers Democratic Party) <input type="radio"/> _____ |
| Legislative District No. 32 Representative Position No. 2 partisan office vote for one <input type="radio"/> Lauren Davis (Prefers Democratic Party) <input type="radio"/> Imraan Siddiqi (Prefers Democratic Party) <input type="radio"/> _____ | Legislative District No. 34 Representative Position No. 1 partisan office vote for one <input type="radio"/> Brianna K. Thomas (Prefers Democratic Party) <input type="radio"/> _____ | Legislative District No. 37 Representative Position No. 1 partisan office vote for one <input type="radio"/> Sharon Tomiko Santos (Prefers Democratic Party) <input type="radio"/> Kelabe Tewelde (Prefers Democratic Party) <input type="radio"/> _____ |
| Legislative District No. 32 Representative Position No. 2 partisan office vote for one <input type="radio"/> Joe Fitzgibbon (Prefers Democratic Party) <input type="radio"/> Mary Anito (Prefers Democratic Party) <input type="radio"/> _____ | Legislative District No. 34 Representative Position No. 2 partisan office vote for one <input type="radio"/> Joe Fitzgibbon (Prefers Democratic Party) <input type="radio"/> Mary Anito (Prefers Democratic Party) <input type="radio"/> _____ | Legislative District No. 37 Representative Position No. 2 partisan office vote for one <input type="radio"/> Jaelynn Scott (Prefers Democratic Party) <input type="radio"/> Evon McCorkle (Prefers Independent Party) <input type="radio"/> _____ |
| Legislative District No. 33 State Senator partisan office vote for one <input type="radio"/> Tina L. Orwall (Prefers Democratic Party) <input type="radio"/> _____ | Legislative District No. 36 State Senator partisan office vote for one <input type="radio"/> Noel C. Frame (Prefers Democratic Party) <input type="radio"/> Jillian England (Prefers Republican Party) <input type="radio"/> _____ | Legislative District No. 41 Representative Position No. 1 partisan office vote for one <input type="radio"/> Janice Zahn (Prefers Democratic Party) <input type="radio"/> Elle Nguyen (Prefers Republican Party) <input type="radio"/> Alex Tsimerman (Prefers Standup-America Party) <input type="radio"/> _____ |
| Legislative District No. 33 Representative Position No. 1 partisan office vote for one <input type="radio"/> Edwin Obras (Prefers Democratic Party) <input type="radio"/> Darryl K. Jones (Prefers Republican Party) <input type="radio"/> Chris Martinez (Prefers Republican Party) <input type="radio"/> _____ | Legislative District No. 36 Representative Position No. 1 partisan office vote for one <input type="radio"/> Julia Grant Reed (Prefers Democratic Party) <input type="radio"/> _____ | <div style="background-color: #4a90e2; color: white; padding: 10px; text-align: center;"> <p>Continue voting other side </p> <p>3 of 12</p> </div> |

| State | State | State |
|--|--|--|
| Legislative District No. 41 Representative Position No. 2 partisan office vote for one <input type="radio"/> Michael Rosen (Prefers Independent Party) <input type="radio"/> My-Linh T Thai (Prefers Democratic Party) <input type="radio"/> _____ | Legislative District No. 45 Representative Position No. 2 partisan office vote for one <input type="radio"/> Vanessa Kritzer (Prefers Democratic Party) <input type="radio"/> John P Gibbons (Prefers Republican Party) <input type="radio"/> Chandler Torbett (Prefers Democratic Party) <input type="radio"/> _____ | Legislative District No. 47 Representative Position No. 1 partisan office vote for one <input type="radio"/> Jasnoor Kaur Hans (Prefers Democratic Party) <input type="radio"/> Cobi Clark (Prefers Libertarian Party) <input type="radio"/> Logan Evans (Prefers Cascade Democrat Party) <input type="radio"/> Debra Jean Entenman (Prefers Democratic Party) <input type="radio"/> _____ |
| Legislative District No. 43 State Senator partisan office vote for one <input type="radio"/> Hannah Sabio-Howell (Prefers Democratic Party) <input type="radio"/> Heather-Marie Wilson (States No Party Preference) <input type="radio"/> Jamie Pedersen (Prefers Democratic Party) <input type="radio"/> _____ | Legislative District No. 46 State Senator partisan office vote for one <input type="radio"/> Javier Valdez (Prefers Democratic Party) <input type="radio"/> Sandra Stephens (Prefers Republican Party) <input type="radio"/> _____ | Legislative District No. 47 Representative Position No. 2 partisan office vote for one <input type="radio"/> Chris Stearns (Prefers Democratic Party) <input type="radio"/> Ted Cooke (Prefers Republican Party) <input type="radio"/> _____ |
| Legislative District No. 43 Representative Position No. 1 partisan office vote for one <input type="radio"/> Nicole Macri (Prefers Democratic Party) <input type="radio"/> Alby Clendennin (Prefers Democratic Party) <input type="radio"/> _____ | Legislative District No. 46 Representative Position No. 1 partisan office vote for one <input type="radio"/> Gerry Pollet (Prefers Democratic Party) <input type="radio"/> Ron Davis (Prefers Democratic Party) <input type="radio"/> Will Dreher (Prefers Democratic Party) <input type="radio"/> _____ | Legislative District No. 48 State Senator partisan office vote for one <input type="radio"/> Vandana Slatter (Prefers Democratic Party) <input type="radio"/> _____ |
| Legislative District No. 43 Representative Position No. 2 partisan office vote for one <input type="radio"/> Shaun Scott (Prefers Democratic Party) <input type="radio"/> _____ | Legislative District No. 46 Representative Position No. 2 partisan office vote for one <input type="radio"/> Darya Farivar (Prefers Democratic Party) <input type="radio"/> Rodney 'Star' Thornley (Prefers Independent Party) <input type="radio"/> _____ | Legislative District No. 48 Representative Position No. 1 partisan office vote for one <input type="radio"/> Osman Salahuddin (Prefers Democratic Party) <input type="radio"/> Jeffery Poppe (Prefers Republican Party) <input type="radio"/> _____ |
| Legislative District No. 45 State Senator partisan office vote for one <input type="radio"/> Manka Dhingra (Prefers Democratic Party) <input type="radio"/> _____ | Legislative District No. 47 State Senator partisan office vote for one <input type="radio"/> Claudia Kauffman (Prefers Democratic Party) <input type="radio"/> Kristina Soltys (Prefers Republican Party) <input type="radio"/> _____ | Legislative District No. 48 Representative Position No. 2 partisan office vote for one <input type="radio"/> Jessica Forsythe (Prefers Democratic Party) <input type="radio"/> Amy Walen (Prefers Democratic Party) <input type="radio"/> _____ |
| Legislative District No. 45 Representative Position No. 1 partisan office vote for one <input type="radio"/> JoAnn Tolentino (Prefers Republican Party) <input type="radio"/> Roger Goodman (Prefers Democratic Party) <input type="radio"/> _____ | | <div style="background-color: #4a90e2; color: white; padding: 10px; text-align: center;"> <p>Continue voting other side </p> <p>4 of 12</p> </div> |

| County | State Supreme Court | City |
|---|---|---|
| Assessor nonpartisan office vote for one <input type="radio"/> Dominique M Scrimbolo <input type="radio"/> Christopher Roberts <input type="radio"/> Rob Foxcurran <input type="radio"/> Al Dams <input type="radio"/> _____ | Justice Position No. 3 nonpartisan office vote for one <input type="radio"/> Jaime Michelle Hawk <input type="radio"/> David Stevens <input type="radio"/> Mike Diaz <input type="radio"/> _____ | City of Black Diamond Proposition No. 1 Annexation of the City of Black Diamond Into the Puget Sound Regional Fire Authority Should the City of Black Diamond be annexed into and become part of the Puget Sound Regional Fire Authority to provide fire and emergency medical services to Black Diamond residents, with such services to commence January 1, 2028, per City Council Resolution No. 26- 1739? <input type="radio"/> Yes <input type="radio"/> No |
| Metropolitan King County Council District No. 2 short and full term nonpartisan office vote for one <input type="radio"/> Miriam Mboya <input type="radio"/> Toshiko Grace Hasegawa <input type="radio"/> Rebecca Saldaña <input type="radio"/> _____ | Justice Position No. 5 unexpired 2-year term nonpartisan office vote for one <input type="radio"/> Greg Miller <input type="radio"/> Theo Angelis <input type="radio"/> Dave Larson <input type="radio"/> Sharonda Amamilo <input type="radio"/> _____ | <div style="background-color: #4a90e2; color: white; padding: 10px; text-align: center;"> <p>Continue voting other side </p> <p>5 of 12</p> </div> |
| Metropolitan King County Council District No. 8 nonpartisan office vote for one <input type="radio"/> Mia Jacobson <input type="radio"/> Teresa Mosqueda <input type="radio"/> Nick Duda <input type="radio"/> _____ | Justice Position No. 7 nonpartisan office vote for one <input type="radio"/> David R Shelvey <input type="radio"/> Debra L. Stephens <input type="radio"/> Karim A. Merchant <input type="radio"/> Todd A. Bloom <input type="radio"/> _____ | |
| State Supreme Court Justice Position No. 1 unexpired 2-year term nonpartisan office vote for one <input type="radio"/> Colleen Melody <input type="radio"/> Laura Christensen Colberg <input type="radio"/> Scott Edwards <input type="radio"/> _____ | District Court Northeast Electoral District Judge Position No. 1 nonpartisan office vote for one <input type="radio"/> Josh Schaer <input type="radio"/> Jan Trasen <input type="radio"/> Bianca Tse <input type="radio"/> _____ | |

| City | City | City |
|--|--|---|
| <p>City of Covington Proposition No. 1 Formation and Funding of Covington Park and Recreation District</p> <p>The City Council of the City of Covington adopted Resolution 2026-08 concerning the creation of the Covington Park and Recreation District.</p> <p>This proposition would create the Covington Park and Recreation District with the powers set forth in 35.61 RCW, including the authority to acquire, construct, maintain, operate, and improve parks, community centers, pools, and other recreation facilities and programs, and levy regular property taxes at a rate up to \$0.75/\$1,000 assessed value, with an initial rate of \$0.37/\$1,000, with boundaries coterminous with the City of Covington. The City Council would serve as the board of park commissioners.</p> <p><input type="radio"/> For the formation of the Covington Park and Recreation District to be governed by the City of Covington City Council as the ex officio board of park commissioners.</p> <p><input type="radio"/> Against the formation of the Covington Park and Recreation District.</p> | <p>City of Seattle Council District No. 5 unexpired 1-year term nonpartisan office vote for one</p> <p><input type="radio"/> Dimitri Georgakopoulos</p> <p><input type="radio"/> Silas James</p> <p><input type="radio"/> Julie Kang</p> <p><input type="radio"/> Nilu Jenks</p> <p><input type="radio"/> _____</p> <hr/> <p>Seattle Municipal Court Judge Position No. 5 nonpartisan office vote for one</p> <p><input type="radio"/> Lindsay Calkins</p> <p><input type="radio"/> Garmon Newsom</p> <p><input type="radio"/> Gabe Rothstein</p> <p><input type="radio"/> _____</p> | <p>City of Seattle Proposition No. 1 Property Tax Levy for The Seattle Public Library</p> <p>The Seattle City Council adopted Ordinance 127419 concerning replacing an expiring levy to fund library services.</p> <p>Proposition 1 would create a property tax to fund investments in Library operating hours and access, collections, technology, maintenance, and administration, as provided in Ordinance 127419.</p> <p>It authorizes a seven-year levy for collection beginning in 2027 of an additional \$0.23/\$1,000 of assessed value, for a maximum total levy rate of \$3.14/\$1,000. 2027's levy amount would be the base for subsequent levies through 2033. RCW 84.36.381's senior citizens and disabled persons exemption applies.</p> <p>Should this levy be approved?</p> <p><input type="radio"/> Yes</p> <p><input type="radio"/> No</p> |
| | | <p>Continue voting other side →</p> <p>6 of 12</p> |

| School | Special Purpose District | Special Purpose District | | | | | | | | | | | | | | | |
|--|--|--|-------------|------|--------|-----------|------|--------|-----------|------|--------|-----------|------|--------|-----------|--|---|
| <p>Skykomish School District No. 404 Proposition No. 1 Replacement of Existing Educational Programs and Operations Levy</p> <p>The Board of Directors of Skykomish School District No. 404 adopted Resolution No. 8-2026 concerning educational funding. This proposition authorizes the District to levy the following excess taxes, to replace an expiring levy, on all taxable property within the District, to support the District's educational programs and operations not funded by the state:</p> <table border="1" data-bbox="94 636 552 863"> <thead> <tr> <th>Collection Year</th> <th>Estimated Levy Rate/\$1,000 Assessed Value</th> <th>Levy Amount</th> </tr> </thead> <tbody> <tr> <td>2027</td> <td>\$0.45</td> <td>\$164,521</td> </tr> <tr> <td>2028</td> <td>\$0.45</td> <td>\$173,405</td> </tr> <tr> <td>2029</td> <td>\$0.45</td> <td>\$182,682</td> </tr> <tr> <td>2030</td> <td>\$0.45</td> <td>\$192,237</td> </tr> </tbody> </table> <p>Should this proposition be approved?</p> <p><input type="radio"/> Yes <input type="radio"/> No</p> | Collection Year | Estimated Levy Rate/\$1,000 Assessed Value | Levy Amount | 2027 | \$0.45 | \$164,521 | 2028 | \$0.45 | \$173,405 | 2029 | \$0.45 | \$182,682 | 2030 | \$0.45 | \$192,237 | <p>King County Fire Protection District No. 43 Proposition No. 1 Annexation of the District Into the Puget Sound Regional Fire Authority</p> <p>King County Fire Protection District No. 43 (District) proposes to annex into the Puget Sound Regional Fire Authority (Puget Sound Fire). Annexation of the District would be subject to the terms of the Puget Sound Fire plan amendment attached to District Resolution No. R-2026-002. Shall District voters approve of the Puget Sound Fire plan amendment and annexation of the District into Puget Sound Fire, making the District a part of Puget Sound Fire?</p> <p><input type="radio"/> Yes <input type="radio"/> No</p> | <p>King County Fire Protection District No. 47 Proposition No. 1 Property Tax Levy for Fire Protection and Emergency Medical Services</p> <p>The Board of King County Fire Protection District No. 47 adopted Resolution No. 186 concerning a proposition to maintain and adequately fund District operations.</p> <p>This proposition would authorize the District to restore its 2026 property tax levy to \$1.00 per \$1,000.00 of assessed valuation (collected in 2027) and authorize annual adjustments for the five succeeding years based on the greater of the statutory limit factor or the 12-month CPI-U for Seattle-Tacoma-Bellevue reported for June of each year, subject to statutory limits. The maximum allowable levy in 2031 shall serve as the base for subsequent levy limitations.</p> <p>Should this proposition be:</p> <p><input type="radio"/> Approved <input type="radio"/> Rejected</p> |
| Collection Year | Estimated Levy Rate/\$1,000 Assessed Value | Levy Amount | | | | | | | | | | | | | | | |
| 2027 | \$0.45 | \$164,521 | | | | | | | | | | | | | | | |
| 2028 | \$0.45 | \$173,405 | | | | | | | | | | | | | | | |
| 2029 | \$0.45 | \$182,682 | | | | | | | | | | | | | | | |
| 2030 | \$0.45 | \$192,237 | | | | | | | | | | | | | | | |

Continue voting other side 
 7 of 12

| Special Purpose District | Precinct Committee Officer | Precinct Committee Officer |
|---|---|--|
| <p>Snoqualmie Pass Fire and Rescue Proposition No. 1 Intent to Continue Voter Authorized Benefit Charge</p> <p>The Board of Commissioners of Snoqualmie Pass Fire and Rescue adopted Resolution No. 2026-01, concerning a proposition for providing for the re-authorization and continuation of a benefit charge.</p> <p>Shall Snoqualmie Pass Fire and Rescue be authorized to continue voter-authorized benefit charges each year for six consecutive years, not to exceed an amount equal to sixty percent of its operating budget, and be prohibited from imposing an additional property tax under RCW 52.16.160?</p> <p><input type="radio"/> Yes <input type="radio"/> No</p> | <p>Democratic Party Candidates vote for one</p> | <p>Democratic Party Candidates vote for one</p> |
| | <p><input type="radio"/> Trevon Cooper I affirm I am a Democrat.</p> <p><input type="radio"/> TJ Revely I affirm I am a Democrat.</p> | <p><input type="radio"/> Eric Carlson I affirm I am a Democrat.</p> <p><input type="radio"/> Gordon Baxter I affirm I am a Democrat.</p> |
| | <p>Democratic Party Candidates vote for one</p> | <p>Republican Party Candidates vote for one</p> |
| | <p><input type="radio"/> Tracey Cook-Lee I affirm I am a Democrat.</p> <p><input type="radio"/> Janice Bristol I affirm I am a Democrat.</p> | <p><input type="radio"/> Tiffany Atwood I affirm I am a Republican.</p> <p><input type="radio"/> Dale Fonk I affirm I am a Republican.</p> |
| | <p>Democratic Party Candidates vote for one</p> | <p>Republican Party Candidates vote for one</p> |
| | <p><input type="radio"/> Clarence Gunn I affirm I am a Democrat.</p> <p><input type="radio"/> Orna Berryman I affirm I am a Democrat.</p> | <p><input type="radio"/> Dan Farrer I affirm I am a Republican.</p> <p><input type="radio"/> Jana Lottinville I affirm I am a Republican.</p> |
| | <p>Democratic Party Candidates vote for one</p> | <p>Democratic Party Candidates vote for one</p> |
| <p>Precinct Committee Officer</p> | <p><input type="radio"/> Srikant Vemparala I affirm I am a Democrat.</p> <p><input type="radio"/> Vandana Prashant Mishra I affirm I am a Democrat.</p> | <p><input type="radio"/> Kimberley Darby I affirm I am a Democrat.</p> <p><input type="radio"/> Sean Smith I affirm I am a Democrat.</p> |
| <p>For this office only: In order to vote for precinct committee officer, a partisan office, you must affirm that you are a Democrat or a Republican and may vote only for one candidate from the party you select. Your vote for a candidate affirms your affiliation with the same party as the candidate. This preference is private and will not be matched to your name or shared.</p> | <p>Democratic Party Candidates vote for one</p> | <p>Democratic Party Candidates vote for one</p> |
| <p>Democratic Party Candidates vote for one</p> | <p><input type="radio"/> Alex Marcellus I affirm I am a Democrat.</p> <p><input type="radio"/> Rick Kirkham I affirm I am a Democrat.</p> | <p><input type="radio"/> Orla Blythe I affirm I am a Democrat.</p> <p><input type="radio"/> Adrienne Forest I affirm I am a Democrat.</p> <p><input type="radio"/> Robert Murano I affirm I am a Democrat.</p> |
| <p><input type="radio"/> Patricia Larson I affirm I am a Democrat.</p> <p><input type="radio"/> Erica Tomas I affirm I am a Democrat.</p> | <p>Democratic Party Candidates vote for one</p> | <p>Republican Party Candidates vote for one</p> |
| <p>Democratic Party Candidates vote for one</p> | <p><input type="radio"/> Vikram Modgil I affirm I am a Democrat.</p> <p><input type="radio"/> Paul B Neil I affirm I am a Democrat.</p> | <p><input type="radio"/> Yu Sun I affirm I am a Republican.</p> <p><input type="radio"/> Joan Murphy I affirm I am a Republican.</p> |
| <p><input type="radio"/> Shantell Sanders I affirm I am a Democrat.</p> <p><input type="radio"/> Hanan Amer I affirm I am a Democrat.</p> | <p>Republican Party Candidates vote for one</p> | <p>Democratic Party Candidates vote for one</p> <p><input type="radio"/> Lamir Magus I affirm I am a Democrat.</p> <p><input type="radio"/> Marion Palo I affirm I am a Democrat.</p> |
| | <p><input type="radio"/> Meera Hessami I affirm I am a Republican.</p> <p><input type="radio"/> Ozzie Bagan I affirm I am a Republican.</p> | <p>Continue voting other side →</p> <p>8 of 12</p> |

| Precinct Committee Officer | Precinct Committee Officer | Precinct Committee Officer |
|---|---|--|
| Democratic Party Candidates vote for one <input type="radio"/> Michael Neher I affirm I am a Democrat. <input type="radio"/> Lionel Forde I affirm I am a Democrat. | Republican Party Candidates vote for one <input type="radio"/> Jason Gayler I affirm I am a Republican. <input type="radio"/> Michael Tate I affirm I am a Republican. | Democratic Party Candidates vote for one <input type="radio"/> Laura Cain-Harris I affirm I am a Democrat. <input type="radio"/> Livey Beha I affirm I am a Democrat. |
| Democratic Party Candidates vote for one <input type="radio"/> Daniel Schirmer I affirm I am a Democrat. <input type="radio"/> Fanny Pacheco I affirm I am a Democrat. | Democratic Party Candidates vote for one <input type="radio"/> Tim Noonan I affirm I am a Democrat. <input type="radio"/> Roger Ledbetter I affirm I am a Democrat. | Republican Party Candidates vote for one <input type="radio"/> Linda Mills I affirm I am a Republican. <input type="radio"/> Angie Phillips I affirm I am a Republican. |
| Democratic Party Candidates vote for one <input type="radio"/> Brittany Nicole Furgason I affirm I am a Democrat. <input type="radio"/> Elizabeth A. Watson I affirm I am a Democrat. | Republican Party Candidates vote for one <input type="radio"/> Mathew Patrick Thomas I affirm I am a Republican. <input type="radio"/> Chinmay Nagarkar I affirm I am a Republican. | Democratic Party Candidates vote for one <input type="radio"/> Leslie S Harris I affirm I am a Democrat. <input type="radio"/> Hudayfa Ismail I affirm I am a Democrat. |
| Republican Party Candidates vote for one <input type="radio"/> MyAnn Morrow I affirm I am a Republican. <input type="radio"/> Melissa D Ohashi I affirm I am a Republican. | Democratic Party Candidates vote for one <input type="radio"/> Bill Cooper I affirm I am a Democrat. <input type="radio"/> Laura Billington I affirm I am a Democrat. | Democratic Party Candidates vote for one <input type="radio"/> Patrick McKee I affirm I am a Democrat. <input type="radio"/> Nicole Fricke I affirm I am a Democrat. |
| Republican Party Candidates vote for one <input type="radio"/> Ruth-Fiam Nord I affirm I am a Republican. <input type="radio"/> Grace Wong I affirm I am a Republican. | vote for one Democratic Party Candidates <input type="radio"/> Aleathea Batchelor I affirm I am a Democrat. <input type="radio"/> Dawne Adam I affirm I am a Democrat. | Democratic Party Candidates vote for one <input type="radio"/> Jesse Scott-Kandoll I affirm I am a Democrat. <input type="radio"/> Helen Sernett I affirm I am a Democrat. |
| Democratic Party Candidates vote for one <input type="radio"/> Bill Cruikshank I affirm I am a Democrat. <input type="radio"/> Margit Moore I affirm I am a Democrat. | Republican Party Candidates <input type="radio"/> Michael Scheele I affirm I am a Republican. <input type="radio"/> Thomas R Caetano I affirm I am a Republican. | Democratic Party Candidates vote for one <input type="radio"/> Joanna Grist I affirm I am a Democrat. <input type="radio"/> James Apa I affirm I am a Democrat. |
| Democratic Party Candidates vote for one <input type="radio"/> Madison Long I affirm I am a Democrat. <input type="radio"/> Jack Jensen I affirm I am a Democrat. | Democratic Party Candidates vote for one <input type="radio"/> Richard Dustin Wight I affirm I am a Democrat. <input type="radio"/> Patricia Ogunmola I affirm I am a Democrat. | <div style="background-color: #4a90e2; color: white; padding: 10px; text-align: center;"> <p>Continue voting other side →</p> <p>9 of 12</p> </div> |
| Republican Party Candidates vote for one <input type="radio"/> Zhulan Li I affirm I am a Republican. <input type="radio"/> Victoria J Bloom I affirm I am a Republican. | Democratic Party Candidates vote for one <input type="radio"/> Gina Fuentevilla I affirm I am a Democrat. <input type="radio"/> Rachel Segerhammar I affirm I am a Democrat. | |

| Precinct Committee Officer | Precinct Committee Officer | Precinct Committee Officer |
|---|--|---|
| Democratic Party Candidates vote for one <input type="radio"/> Claire Ramos I affirm I am a Democrat. <input type="radio"/> Laura Marie Rivera I affirm I am a Democrat. | Democratic Party Candidates vote for one <input type="radio"/> Bridgette Maryman I affirm I am a Democrat. <input type="radio"/> Jamie Fackler I affirm I am a Democrat. | Democratic Party Candidates vote for one <input type="radio"/> Chio Saeteurn I affirm I am a Democrat. <input type="radio"/> Eric Buley I affirm I am a Democrat. <input type="radio"/> Suresh Chanmugam I affirm I am a Democrat. |
| Democratic Party Candidates vote for one <input type="radio"/> Etan Berkowitz I affirm I am a Democrat. <input type="radio"/> Brad Nelson I affirm I am a Democrat. | Democratic Party Candidates vote for one <input type="radio"/> April Vian I affirm I am a Democrat. <input type="radio"/> Beth Brunton I affirm I am a Democrat. | Democratic Party Candidates vote for one <input type="radio"/> Fernando Medina Corey I affirm I am a Democrat. <input type="radio"/> Brandon Heechan Gim I affirm I am a Democrat. |
| Democratic Party Candidates vote for one <input type="radio"/> Sue Moser I affirm I am a Democrat. <input type="radio"/> Kiana Scott I affirm I am a Democrat. | Democratic Party Candidates vote for one <input type="radio"/> Jennifer Parada I affirm I am a Democrat. <input type="radio"/> Casey Smith I affirm I am a Democrat. | Democratic Party Candidates vote for one <input type="radio"/> Tim Gould I affirm I am a Democrat. <input type="radio"/> Linda J Clifton I affirm I am a Democrat. |
| Democratic Party Candidates vote for one <input type="radio"/> Kendall Oehler I affirm I am a Democrat. <input type="radio"/> Greg Thiessen I affirm I am a Democrat. | Democratic Party Candidates vote for one <input type="radio"/> Robert Stephens Jr I affirm I am a Democrat. <input type="radio"/> Carla Curio I affirm I am a Democrat. | Democratic Party Candidates vote for one <input type="radio"/> Carl Slater I affirm I am a Democrat. <input type="radio"/> Aaron Wheeler I affirm I am a Democrat. |
| Democratic Party Candidates vote for one <input type="radio"/> Joe Harrington I affirm I am a Democrat. <input type="radio"/> E. Bailey Medilo I affirm I am a Democrat. <input type="radio"/> Melissa Falcone I affirm I am a Democrat. | Democratic Party Candidates vote for one <input type="radio"/> Megan Riel-Mehan I affirm I am a Democrat. <input type="radio"/> Heather Hess I affirm I am a Democrat. | Democratic Party Candidates vote for one <input type="radio"/> Daniel Heppner I affirm I am a Democrat. <input type="radio"/> Bryce Kolton I affirm I am a Democrat. |
| Democratic Party Candidates vote for one <input type="radio"/> Scott Winn I affirm I am a Democrat. <input type="radio"/> Carla McLean I affirm I am a Democrat. | Democratic Party Candidates vote for one <input type="radio"/> Maya Cutforth I affirm I am a Democrat. <input type="radio"/> Kirky Hanson I affirm I am a Democrat. | Democratic Party Candidates vote for one <input type="radio"/> Adora Blue I affirm I am a Democrat. <input type="radio"/> Erik Wren I affirm I am a Democrat. <input type="radio"/> Aaron McCloud I affirm I am a Democrat. |
| Democratic Party Candidates vote for one <input type="radio"/> Daniel Escapa I affirm I am a Democrat. <input type="radio"/> Chukundi Salisbury Sr I affirm I am a Democrat. | Democratic Party Candidates vote for one <input type="radio"/> Ian Mosher I affirm I am a Democrat. <input type="radio"/> Marietta Zintak I affirm I am a Democrat. | <div style="background-color: #4a90e2; color: white; padding: 10px; text-align: center;"> <p>Continue voting other side </p> <p>10 of 12</p> </div> |

| Precinct Committee Officer | Precinct Committee Officer | Precinct Committee Officer |
|---|---|---|
| Democratic Party Candidates vote for one <input type="radio"/> Emeka Alozie I affirm I am a Democrat. <input type="radio"/> Leonard Harrison Jerome I affirm I am a Democrat. | Democratic Party Candidates vote for one <input type="radio"/> Stephen Paolini I affirm I am a Democrat. <input type="radio"/> Brandon Monson I affirm I am a Democrat. | Democratic Party Candidates vote for one <input type="radio"/> Candy Wilson I affirm I am a Democrat. <input type="radio"/> Janet M Way I affirm I am a Democrat. |
| Democratic Party Candidates vote for one <input type="radio"/> Sean Butterfield I affirm I am a Democrat. <input type="radio"/> Jase Pickering I affirm I am a Democrat. | Democratic Party Candidates vote for one <input type="radio"/> Paul Nacamuli I affirm I am a Democrat. <input type="radio"/> Frank Field I affirm I am a Democrat. | Democratic Party Candidates vote for one <input type="radio"/> Andrew Holt I affirm I am a Democrat. <input type="radio"/> Norbert Steele I affirm I am a Democrat. |
| Democratic Party Candidates vote for one <input type="radio"/> Amy Madden I affirm I am a Democrat. <input type="radio"/> Matthew Epshtein I affirm I am a Democrat. | Democratic Party Candidates vote for one <input type="radio"/> David Lichter I affirm I am a Democrat. <input type="radio"/> Sharon London I affirm I am a Democrat. | Democratic Party Candidates vote for one <input type="radio"/> Bettelinn Brown I affirm I am a Democrat. <input type="radio"/> Allison Luzader I affirm I am a Democrat. <input type="radio"/> Desiree Moore I affirm I am a Democrat. |
| Democratic Party Candidates vote for one <input type="radio"/> Bob Mahon I affirm I am a Democrat. <input type="radio"/> Anne Purcell I affirm I am a Democrat. | Democratic Party Candidates vote for one <input type="radio"/> Sylvia Haven I affirm I am a Democrat. <input type="radio"/> Nancy Lichter I affirm I am a Democrat. | Democratic Party Candidates vote for one <input type="radio"/> Lauri DeVore I affirm I am a Democrat. <input type="radio"/> Tom Fitzpatrick I affirm I am a Democrat. |
| Democratic Party Candidates vote for one <input type="radio"/> Jeremy Erdman I affirm I am a Democrat. <input type="radio"/> Seth May I affirm I am a Democrat. | Democratic Party Candidates vote for one <input type="radio"/> Ed Freeman I affirm I am a Democrat. <input type="radio"/> Matt Weatherford I affirm I am a Democrat. | Republican Party Candidates vote for one <input type="radio"/> Laura Steinmetz I affirm I am a Republican. <input type="radio"/> Ping Liu I affirm I am a Republican. |
| Democratic Party Candidates vote for one <input type="radio"/> Paul Lee I affirm I am a Democrat. <input type="radio"/> Aspen Coyle I affirm I am a Democrat. | Democratic Party Candidates vote for one <input type="radio"/> Hunter Brown I affirm I am a Democrat. <input type="radio"/> Lisa Rivera I affirm I am a Democrat. | Democratic Party Candidates vote for one <input type="radio"/> Eric Scheir I affirm I am a Democrat. <input type="radio"/> Hammad Ali Hashmi I affirm I am a Democrat. |
| Democratic Party Candidates vote for one <input type="radio"/> Chanpreet Singh I affirm I am a Democrat. <input type="radio"/> Grant Peltier I affirm I am a Democrat. | Democratic Party Candidates vote for one <input type="radio"/> Tara Gallagher I affirm I am a Democrat. <input type="radio"/> John Luethe I affirm I am a Democrat. | <div style="background-color: #0070C0; color: white; padding: 10px; text-align: center;"> <p>Continue voting other side</p> <p>11 of 12 </p> </div> |

Precinct Committee Officer

Democratic Party Candidates

vote for one

- Christine Ann Pinto**
I affirm I am a Democrat.
- Janice Gedlund**
I affirm I am a Democrat.

Democratic Party Candidates

vote for one

- Dian Ferguson**
I affirm I am a Democrat.
- Dennis Martinez**
I affirm I am a Democrat.

Democratic Party Candidates

vote for one

- Tamara M Bauman**
I affirm I am a Democrat.
- Kate Kruller**
I affirm I am a Democrat.

Republican Party Candidates

vote for one

- Michael Bladow**
I affirm I am a Republican.
- Paul Michael McMahon**
I affirm I am a Republican.

Republican Party Candidates

vote for one

- Paul R Fisher**
I affirm I am a Republican.
- Nirav Sheth**
I affirm I am a Republican.

Democratic Party Candidates

vote for one

- Lloyd T Spencer**
I affirm I am a Democrat.
- Dominik Faunce**
I affirm I am a Democrat.

Democratic Party Candidates

vote for one

- Srikanth Sundaragopalan**
I affirm I am a Democrat.
- Aspen Richter**
I affirm I am a Democrat.

End of Ballot

Vote both sides of ballot