

February 11, 2025 Special Election

# King County Official Local Voters' Pamphlet

as requested by Seattle School District No.1

## Sign up for ballot alerts!

Get texts or emails as your ballot is processed and counted. Opt in at [kce.wiki/TrackMyBallot](https://kce.wiki/TrackMyBallot).



## Register to vote



**Online:** Visit [VoteWA.gov](https://VoteWA.gov) to register to vote online. The deadline to register online for the February Special Election is February 3.



**By mail:** Download and print a registration form from [kce.wiki/VoterReg](https://kce.wiki/VoterReg) and mail to King County Elections: 919 SW Grady Way, Renton, WA 98057. It must be received by February 3.



**In person:** You can register in person through February 11, Election Day, at King County Elections headquarters. More information about hours and services can be found at [kingcounty.gov/elections](https://kingcounty.gov/elections).

## Contact us to receive this pamphlet in an alternate format.

Contact us to receive your voting materials in Chinese, Korean, Russian, Somali, Spanish or Vietnamese.

如需獲取您的中文投票資訊，請與我們聯絡。

한국어로 투표 자료를 받으시려면 저희에게 연락하세요.

Свяжитесь с нами, чтобы получать материалы для голосования на русском.

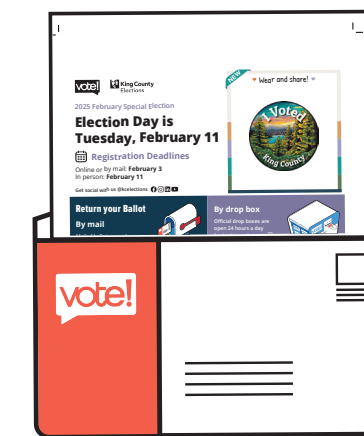
Nala soo xiriir si aad u hesho agabkaaga codeynta oo ku qoran Af-Soomaali.

Comuníquese con nosotros para recibir sus materiales de votación en español.

Xin vui lòng liên lạc với Sở Bầu cử Quận King để nhận tài liệu bầu cử bằng tiếng Việt.



## Learn more about drop boxes, vote centers, and more!



### We are here to help!

Elections staff can help you register and get a new ballot all the way up to Election Day. Need a replacement ballot and want to mark your ballot privately? Access your ballot online at [kingcounty.gov/elections/obmp](https://kingcounty.gov/elections/obmp) to utilize the Online Ballot Marking Program.

Wrapped around your ballot is vital information about how to return your ballot, receive assistance, and more. Be sure to check out your ballot wrap for:

- The five closest drop boxes to you
- Where to get in-person assistance
- How to print your ballot if yours is lost or damaged.

# How to vote!

**1** Read the statements in this insert about the contests you're voting on.



**2** On your ballot, fill in the oval beside your choice with any color pen.



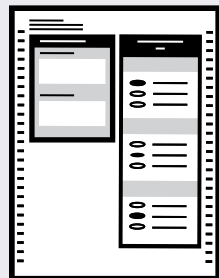
**3** Sign your envelope. Your signature must match the signature on your voter registration record for your ballot to be counted.



**4** Return your ballot early. Whether using a drop box or the mail, vote early!



**5** Track your ballot at [kce.wiki/TrackMyBallot](https://kce.wiki/TrackMyBallot). This is the fastest way for you to know your ballot was counted, and your voice was heard.



## Need a replacement ballot?

If your ballot is lost or damaged, you can print a replacement from home, the library, or wherever is convenient.

The Online Ballot Marking Program (OBMP) is available for all registered voters. It's designed to enable voters with disabilities, particularly who are blind or low vision, to mark their ballot privately.



## How to use the Online Ballot Marking Program



- Go to [kingcounty.gov/elections/obmp](https://kingcounty.gov/elections/obmp).
  - Enter your information in the form.
  - Mark your ballot choices online and then print your completed ballot.
  - OR
  - Print your ballot and mark it by hand.
  - Check that your ballot is marked correctly.
  - Return your ballot as usual, at a ballot drop box or via USPS.
- No postage is required when you use the envelope cover sheet included when you print your ballot.



If you need additional assistance or another way to cast your ballot, please contact our office at 206-296-VOTE (8683).



## Who donates to campaigns?

View financial contributors for state and local candidates and measures:

Public Disclosure Commission  
[www.pdc.wa.gov](https://www.pdc.wa.gov) | Toll Free 1-877-601-2828

206-296-VOTE (8683)  
[elections@kingcounty.gov](mailto:elections@kingcounty.gov)  
[kingcounty.gov/elections](https://kingcounty.gov/elections)

Get social with us @[@kcelections](https://twitter.com/kcelections)



**Proposition No. 1**

**Replacement for Educational Programs and Operations Levy**

The Board of Directors of Seattle School District passed Resolution No. 2024/25-3 concerning this proposition to maintain current educational funding. To continue high quality programs that are not state funded or fully funded, this authorizes the District to levy the following excess taxes replacing an expiring levy on all taxable property within the District:

Collection Years	Estimated Levy Rate/\$1,000 Assessed Value	Levy Amount
2026	\$0.78	\$250,000,000
2027	\$0.75	\$249,000,000
2028	\$0.72	\$248,000,000

as provided in the Resolution, subject to legal limits at time of levy. Should this proposition be approved?

Yes  
No

*The complete text of this measure is available at the Elections Office or online at [kingcounty.gov/elections](http://kingcounty.gov/elections).*

Requirement passage: Simple majority (Wash. Const. art. VII, sec. 2(a))

**Explanatory statement**

Seattle Public Schools requests voter approval of an operations levy of \$747.0 million in the aggregate to be collected in the three-year period from 2026 to 2028. The proposed levy will replace an expiring levy.

Passage of Proposition No. 1 would allow the levy of taxes to pay for the education programs and operations and to meet the education needs of the students attending District schools. Funds will be used to fund programs that are not funded or not fully funded by the State. The money in and to be paid into the General Fund of the District is insufficient to meet those needs without additional funds.

Programs and services to be funded by the levy include, but are not limited to: teachers, instructional assistants, classified and administrative staff salaries; textbooks and classroom supplies; bilingual and special education services; student transportation, security, maintenance and other operations; student activities, such as arts, extra-curricular and co-curricular activities; professional development and training.

The total amount to be collected will be \$250 million in 2026, \$249 million in 2027 and \$248 million in 2028. The estimated levy rates per \$1,000 of assessed value will be \$0.78 for 2026 collection; \$0.75 for 2027 collection; and \$0.72 for 2028 collection. The exact levy rates will be adjusted based upon the actual assessed value of the property within the District at the time of the levy.

Exemptions from taxes may be available to certain homeowners. To determine if you qualify, call the King County Assessor at 206-296-7300.

**For questions about this measure, contact:**  
**Dr. Kurt Buttleman**  
 Assistant Superintendent of Finance  
 (206) 252-0086  
[krbuttleman@seattleschools.org](mailto:krbuttleman@seattleschools.org)

**Proposition No. 2**

**Building Excellence Program (BEX) VI – Capital Levy**

The Board of Directors of Seattle School District requests approval of a capital levy as described in Resolution No. 2024/25-4. The proposition replaces an expiring capital levy and authorizes the levy of excess taxes to fund BEX VI for safety and security, energy efficiency projects, construction or renovation at five schools, projects for building systems and major maintenance, and technology and other projects throughout the District:

Collection Years	Estimated Levy Rate/\$1,000 Assessed Value	Levy Amount
2026	\$0.93	\$300,000,000
2027	\$0.90	\$300,000,000
2028	\$0.87	\$300,000,000
2029	\$0.84	\$300,000,000
2030	\$0.81	\$300,000,000
2031	\$0.79	\$300,000,000

Should this proposition be approved?

Yes  
No

*The complete text of this measure is available at the Elections Office or online at [kingcounty.gov/elections](http://kingcounty.gov/elections).*

Requirement passage: Simple majority (Wash. Const. art. VII, sec. 2(a))

**Explanatory statement**

Seattle Public Schools requests voter approval of a capital levy of \$1.8 billion for the Building Excellence VI (BEX VI) Program. The proposed levy will replace an expiring levy.

Passage of Proposition No. 2 would allow the levy of taxes over a six-year period to make districtwide safety and security improvements, including door access hardware, cameras, emergency notification upgrades, as well as building condition and infrastructure improvements throughout the District including energy efficiency upgrades, roof replacements, mechanical systems, interior and exterior renovations. The levy funding will also construct, renovate, replace or make additions at up to five schools, including career and technical education classrooms. The levy funds approximately 90 percent of the district's technology budget, including student technology and related staff training to ensure we meet today's current and future educational needs.

The total amount to be collected will be \$300 million in each year from 2026 to 2031. The estimated levy rates per \$1,000 of assessed value will range from \$0.93 for 2026 collections to \$0.79 for 2031 collections. The exact levy rate will be adjusted based upon the actual assessed value of the property within the District at the time of the levy.

Exemptions from taxes may be available to certain homeowners. To determine if you qualify, call the King County Assessor at 206-296-7300.

**For questions about this measure, contact:**  
**Dr. Kurt Buttleman**  
 Assistant Superintendent of Finance  
 (206) 252-0086  
[krbuttleman@seattleschools.org](mailto:krbuttleman@seattleschools.org)

**Statement in favor**

Jorge L. Barón, Susie Clark  
[www.seattleschoolsfirst.org](http://www.seattleschoolsfirst.org)

Please *renew* this essential Seattle Public Schools Educational Programs and Operations Levy. Its passage is vital to providing a quality education to the nearly 50,000 students currently enrolled.

A great city must have great public schools. This levy benefits every school in every part of Seattle. It replaces our current levy and provides needed funding to pay for *critical educational support* such as STEM education, Career and Technical Education, school security staff, counselors, custodians, child nutrition programs, instructional materials and new curriculum, and Special Education services. If the Operations Levy is not renewed, the district will have to make deep cuts. Teachers and instructional assistants will be laid off, and valuable programs that support students will be cut back or eliminated.

“Here’s something positive we can *All* support to make our schools better, particularly helping fund our STEM and Career and Technical Education curriculums. Please vote to renew this levy! Without these resources it is hard to imagine how teachers can do their jobs. Thank you.” – Susie Clark, 6th grade Aki Kurose teacher.

This levy is not a new tax. It replaces the expiring Operations Levy. Please vote Yes to renew our commitment to Seattle’s children.

**Statement in opposition**

No statement submitted.

Statements in favor of and in opposition to a ballot measure are submitted by committees appointed by the jurisdiction. No persons came forward to serve on the committee and to write a statement in opposition. If you would like to be involved with a committee in the future please contact the jurisdiction.

**Statement in favor**

Stephan Blanford, Dow Constantine, Samantha Fogg  
[www.seattleschoolsfirst.org](http://www.seattleschoolsfirst.org)

Please vote *Yes* to renew this levy, which helps make sure our students are safe and our schools well maintained. The Capital Levy will make sure all students and teachers have a safe learning environment by retrofitting buildings for earthquake safety, improving fire alarms and school security systems, and making other critical safety investments. This levy also provides 90% of the money for technology, including student computers and classroom technology.

The Capital Levy replaces an expiring Capital Levy and is dedicated to building safe and healthy learning places for our children. Many of our school buildings are over 50 years old and need renovation or replacement. The Capital Levy funds critical repairs and renovations across Seattle including major construction, renovation, or replacement of five schools. Every student and every school benefits!

This levy is not a new tax. It replaces the expiring Capital Levy. Please vote to renew our commitment to Seattle’s children.

**Statement in opposition**

Chris Jackins

Seattle loves schools. Prop 2 closes them. Please vote “No” on Prop 2. This BEX Capital levy builds mega-size schools to “consolidate” and close schools. That is not what the public wants. Request a levy rewrite by voting “No”.

Please reject this levy so a better Capital levy can be written with three aims as follows. (1) Keep schools open and sparkling. (2) Set aside portions of Capital levy funds in bank accounts to generate interest which by state law (RCW 28A.320.320) can be used to help the District’s separate Operating budget. (3) Shrink this \$1.8 billion Capital levy to reduce taxes and make Seattle more affordable including for families. That would be a win, win, win.

**Rebuttal of statement in opposition**

The “Con” statement is wrong. Read the text for yourself; there is nothing in Prop. 2 that will close a single school or consolidate schools. In fact, Prop. 2 maintains, rebuilds and replaces aging existing school buildings, roofs, HVAC systems, technology and security systems districtwide.

“All Seattle kids, regardless of zip code, deserve safe and healthy schools and up-to-date technology. Let’s continue investing in their future success.” – State Senator Javier Valdez.

**Rebuttal of statement in favor**

Please vote “No” to tell the School Board: “Don’t close schools.” Vote “No” to request a levy rewrite.

Thank you.