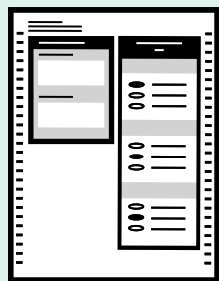


April 22, 2025 Special Election

# King County Official Local Voters' Pamphlet

as requested by King County and King County Fire Protection District No. 45



## Need a replacement ballot?

If your ballot is lost or damaged, you can print a replacement from home, the library, or wherever is convenient.

The Online Ballot Marking Program (OBMP) is available for all registered voters. It's designed to enable voters with disabilities, particularly who are blind or low vision, to mark their ballot privately.



## How to use the Online Ballot Marking Program

- Go to [kingcounty.gov/elections/obmp](http://kingcounty.gov/elections/obmp).
  - Enter your information in the form.
  - Mark your ballot choices online and then print your completed ballot.
  - OR
  - Print your ballot and mark it by hand.
  - Check that your ballot is marked correctly.
  - Return your ballot as usual, at a ballot drop box or via USPS.
- No postage is required when you use the envelope cover sheet included when you print your ballot.

## Contact us to receive this pamphlet in an alternate format.

Contact us to receive your voting materials in Chinese, Korean, Russian, Somali, Spanish or Vietnamese.

如需獲取您的中文投票資訊，請與我們聯絡。

한국어로 투표 자료를 받으시려면 저희에게 연락하세요.

Свяжитесь с нами, чтобы получать материалы для голосования на русском.

Nala soo xiriir si aad u hesho agabkaaga codeynta oo ku qoran Af-Soomaali.

Comuníquese con nosotros para recibir sus materiales de votación en español.

Xin vui lòng liên lạc với Sở Bầu cử Quận King để nhận tài liệu bầu cử bằng tiếng Việt.



If you need additional assistance or another way to cast your ballot, please contact our office at 206-296-VOTE (8683).

## Sign up for ballot alerts!

Get texts or emails as your ballot is processed and counted. Opt in at [kce.wiki/TrackMyBallot](http://kce.wiki/TrackMyBallot).



## Register to vote



**Online:** Visit [VoteWA.gov](http://VoteWA.gov) to register to vote online. The deadline to register online for the April Special Election is April 14.



**By mail:** Download and print a registration form from [kce.wiki/VoterReg](http://kce.wiki/VoterReg) and mail to King County Elections: **919 SW Grady Way, Renton, WA 98057**. It must be received by April 14.



**In person:** You can register in person through April 22, Election Day, at King County Elections headquarters. More information about hours and services can be found at [kingcounty.gov/elections](http://kingcounty.gov/elections).

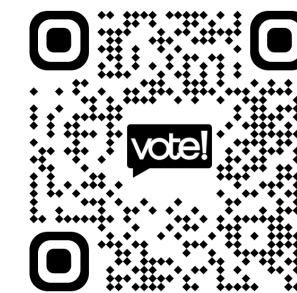
## In this election, you have options!

For this election only, you can verify your identity online!

Prefer to sign? That works too. You only need to do one or the other.

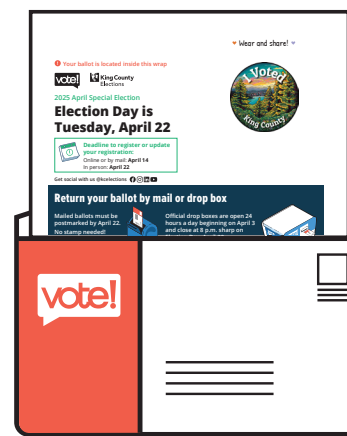
Visit [kce.wiki/verify](http://kce.wiki/verify) and follow the instructions online.

Need help? Contact us at 206-296-VOTE (8683) or [elections@kingcounty.gov](mailto:elections@kingcounty.gov).



[kce.wiki/verify](http://kce.wiki/verify)

## Learn more about drop boxes, vote centers, and more!



### We are here to help!

Elections staff can help you register and get a new ballot all the way up to Election Day. Need a replacement ballot and want to mark your ballot privately? Access your ballot online at [kingcounty.gov/elections/obmp](http://kingcounty.gov/elections/obmp) to utilize the Online Ballot Marking Program.

Wrapped around your ballot is vital information about how to return your ballot, receive assistance, and more. Be sure to check out your ballot wrap for:

- The five closest drop boxes to you
- Where to get in-person assistance
- How to print your ballot if yours is lost or damaged.

## Who donates to campaigns?

View financial contributors for state and local candidates and measures:

Public Disclosure Commission  
[www.pdc.wa.gov](http://www.pdc.wa.gov) | Toll Free 1-877-601-2828

206-296-VOTE (8683)  
[elections@kingcounty.gov](mailto:elections@kingcounty.gov)  
[kingcounty.gov/elections](http://kingcounty.gov/elections)

Get social with us @[@kcelections](https://www.instagram.com/kcelections)



## Proposition No. 1

## Regional Automated Fingerprint Identification System (AFIS) Levy

The King County Council has passed Ordinance No. 19884 concerning this proposition for the regional automated fingerprint identification system (AFIS) levy. This proposition would fund the continued operation of the AFIS program to provide enhanced forensic fingerprint and palmprint technology and services to aid in the administration of justice. It would authorize an additional property tax for seven years beginning in 2026 at \$0.0275 per \$1,000 of assessed valuation, use the 2026 levy amount to compute limitations under Chapter 84.55 RCW for subsequent levies in 2027-2032, and exempt eligible seniors, veterans, and disabled persons under RCW 84.36.381. Should this proposition be:

Approved

Rejected

*The complete text of this measure is available beginning on page 5.*



You will be voting to  
**Approve or Reject**  
Proposition No. 1

*Requirement passage: Simple majority (RCW 84.55.050)*

### Explanatory statement

This proposition would reauthorize King County to levy an additional regular property tax to support the continued operation and enhancement of the regional automated fingerprint identification system (AFIS) program and would replace the voter-approved levy that expired on December 31, 2024. The AFIS program is designed to improve the ability of law enforcement agencies within King County to aid in the administration of justice. Among other activities, the AFIS program provides enhanced forensic fingerprint and palmprint identification technology and services.

The proposed levy would be authorized for a seven-year period with collection beginning in 2026. During the first year, the tax would be levied at a rate of 2.75 cents (\$0.0275) or less per one thousand dollars (\$1,000) of assessed valuation on all taxable property within King County. For example, a home assessed at \$885,000 in 2026, would have a maximum levy amount of \$24.34 in the first year. Annual increases in each of the succeeding six years would be limited to the statutory rate set forth in chapter 84.55 RCW. Qualifying seniors, veterans, and disabled persons would be eligible for exemption from the levy under RCW 84.36.381.

Proposition No. 1 would retain the AFIS advisory committee.

#### For questions about this measure, contact:

**Mike Leahy**  
AFIS Regional Manager  
(206) 263-2750  
michael.leahy@kingcounty.gov

### Statement in favor

Patti Cole-Tindall, Pete von Reichbauer, Jon Schuldt  
yesforAFIS2025@gmail.com

For nearly 40 years, the King County Automated Fingerprint Identification System (AFIS) has been an essential forensic tool in the fight against crime. AFIS has been instrumental in solving everything from violent offenses to burglaries, and your yes vote continues the ability to provide closure for victims and their families.

Through advanced matching technology, AFIS ensures swift and accurate identification of arrestees, applicants, and criminal suspects. As a regionally funded program, all law enforcement agencies in King County share access to these forensic services at a lower overall cost than if they funded their own.

The AFIS program has demonstrated responsible fiscal management and, through prudent financial oversight, was able to extend the previous six-year levy by an additional year. This achievement shows that the program efficiently utilizes resources and can be trusted with the allocation of our tax dollars.

Voting yes to renew the AFIS levy is an investment in a safer community. It supports a proven tool that strengthens investigations, ensures faster resolution of cases, and fosters a sense of security for all residents. Let us continue to benefit from this indispensable program and uphold justice in King County. Please, vote yes on Proposition 1.

### Statement in opposition

No statement submitted.

Statements in favor of and in opposition to a ballot measure are submitted by committees appointed by the jurisdiction. No persons came forward to serve on the committee and to write a statement in opposition. If you would like to be involved with a committee in the future please contact the jurisdiction.

**Proposition No. 1**

Shall Duvall Fire (King County Fire Protection District No. 45) be authorized to continue voter-authorized benefit charges each year for six consecutive years, not to exceed an amount equal to sixty percent of its operating budget, and be prohibited from imposing an additional property tax under RCW 52.16.160?

Yes

No

*The complete text of this measure is available at the Elections Office or online at [kingcounty.gov/elections](http://kingcounty.gov/elections).*



You will be voting  
**Yes or No**  
on Proposition No. 1

*Requirement passage: Simple majority (RCW 52.18.050)*

**Explanatory statement**

King County Fire District 45 – Duvall Fire (the District) serves the citizens of Duvall by contract with Eastside Fire & Rescue. The District is placing a measure on the April 22, 2025 special-election ballot to continue the District’s Benefit Charge, for a period of six consecutive years.

District voters approved the Benefit Charge in 2019, for collection between 2020-2025. The Benefit Charge is not a tax, but rather a fee based on square footage, property use, and fire risk factors. If this measure passes, the District may not impose a fire tax levy in excess of \$1.00 per \$1,000 in assessed valuation. The Benefit Charge may not make up any more than 60% of the District’s operating budget.

The District has a contract for services with Eastside Fire & Rescue, a fully paid fire department which provides fire suppression, emergency medical treatment and transport, hazardous materials and technical rescue response, water rescue and fire prevention in Duvall. The District’s current tax levies are insufficient to adequately fund fire and emergency medical services to the citizens of Duvall. Passage of this measure would continue a sustainable funding source of the District.

**For questions about this measure, contact:**

**Ben Lane**  
Fire Chief  
(425) 313-3200  
[blane@esf-r.org](mailto:blane@esf-r.org)

**Statement in favor**

Michael Beard  
[mrbeard45@gmail.com](mailto:mrbeard45@gmail.com)

Please vote to renew the Benefit Service Charge (BSC) as one of the sources used to finance Fire District operations and services.

The BSC is calculated based on the area of buildings and other improvements on parcels. There is no charge for undeveloped land, and buildings with fire sprinklers have a reduced rate. The BSC calculation more closely approximates the fire risk to property and the service potentially required from KCFD45. The BSC calculation considers that those who benefit more from the fire protection services (e.g., large structures and structures used in a manner that pose higher fire risk, such as commercial structures) fund more for to prepare for fire response.

The ability to adjust the BSC in each annual budget cycle enables the Board of Fire Commissioners to maintain KCFD45’s high standard of service levels and to adjust to the cost fluctuations impacting daily operations and long-term capital and equipment needs. The District maintains these funds for apparatus, equipment replacement purchases, and other capital and personnel expenditures, all from the property tax and the BSC and not through special levies.

This has been an effective, and predictable tool to help operate our stations and support our highly trained Firefighters.

**Statement in opposition**

No statement submitted.

Statements in favor of and in opposition to a ballot measure are submitted by committees appointed by the jurisdiction. No persons came forward to serve on the committee and to write a statement in opposition. If you would like to be involved with a committee in the future please contact the jurisdiction.

## Full text of Ordinance 19884

AN ORDINANCE providing for the submission to the qualified electors of King County at a special election to be held in King County on April 22, 2025, of a proposition to reauthorize an expired regular property tax levy in excess of the levy limitation contained in chapter 84.55 RCW, for a consecutive seven year period beginning in 2026 at the rate of not more than \$0.0275 per one thousand dollars of assessed valuation, with the 2026 levy amount being the base for computing maximum allowable levy amounts under chapter 84.55 RCW for years two through seven (2027–2032), for the purpose of funding the continued operation of the regional automated fingerprint identification system, also known as AFIS, which maintains expanded crime scene and arrest identification technology and services for all local criminal justice agencies in King County.

### STATEMENT OF FACTS:

1. To expand and enhance upon the limited identification services provided by individual city and county law enforcement agencies or at the state level, in 1986 the voters of King County approved funding for the purchase of a shared regional automated fingerprint identification system (“AFIS”) computer, which matches unknown fingerprints to known fingerprints. King County’s AFIS database holds over two million fingerprint records, over one million palmprint records, and approximately sixty-three thousand crime scene prints from unsolved cases. The King County AFIS is a regional system with program services available to every city and unincorporated area in King County.

2. The AFIS computer is used for two primary purposes:

a. To quickly identify arrested individuals, and prevent the wrongful release of those who use false names to evade arrest warrants or hide criminal records; and

b. To search fingerprints and palmprints collected from crime scenes to identify unknown suspects and aid in convictions.

3. The county first purchased the shared AFIS computer after the voters of King County approved a property tax levy for that purpose in November 1986. The ballot measure was authorized by Ordinance 7747. Since 1986, the voters of King County have continued to endorse the service by approving renewal property tax levies ranging from \$0.0200 to \$0.0665 per one thousand dollars of assessed valuation as needed to support, expand, and enhance AFIS services. The levy history for the AFIS program is:

a. Five-year renewal levy approved in November 1990. The ballot measure was authorized by Ordinance 9603;

b. Five-year renewal levy approved in November 1995. The ballot measure was authorized by Ordinance 11948;

c. Five-year renewal levy approved in September 2000. The ballot measure was authorized by Ordinance 13894. Funding sustained AFIS program operations through 2006 without a concurrent property tax levy;

d. Six-year reauthorization levy approved in September 2006. The ballot measure was authorized by Ordinance 15537. Below budget program spending allowed the county to reduce levy rates in 2011 and 2012;

e. Six-year renewal levy approved in November 2012. The ballot measure was authorized by Ordinance 17381; and

f. Six-year renewal levy approved in August 2018. The ballot measure was authorized by Ordinance 18674. Through conservative spending, the county accumulated a fund balance, which will sustain AFIS program operations through 2025 without a concurrent property tax levy.

4. The AFIS computer was first installed in 1988. That initial system was updated in 1999, and then replaced with a new system in 2011. The new system introduced palmprint searching for the first time in King County. The system was upgraded in 2018 to a cloud-based

system which is continually updated to ensure the county is using the latest fingerprint matching technology.

5. The 2018 AFIS levy, which was adopted at a rate of \$0.03501 per one thousand dollars of assessed valuation, expired on December 31, 2024. Through prudent fiscal management, a balance has accumulated in the AFIS fund over the past six years. The balance will be used to sustain appropriations in 2025 and continue AFIS program operations without a concurrent property tax levy. This ordinance proposes a renewed AFIS levy at a rate of \$0.0275 per one thousand dollars of assessed valuation with collections beginning in 2026. Without renewed revenue, fund balances will be depleted after 2025 and funding for the program will end.

6. Large cities and metropolitan areas around the country have realized great benefit from having their own AFIS technology and supporting staff, but it is often not affordable for local independent police agencies. King County is the only county in the state of Washington with its own AFIS computer, and it is the only Washington county with a shared, regional model that provides services to all local law enforcement agencies. By centralizing services, technology, and resources, the regional approach supports crime-solving at a lower overall cost, through economy of scale. Other benefits of a regional approach include a larger, higher quality database that results in more identifications, and more information sharing between agencies.

7. In 2023, the AFIS program searched almost fifty-one thousand electronically submitted fingerprint records and identified over two hundred individuals who had given false names when arrested. The program responded to over three thousand requests for crime scene assistance, processed over fifteen thousand pieces of evidence and identified well over five thousand crime scene prints. The AFIS computer was also used to search almost six thousand fingerprint records submitted by officers in the field using mobile identification devices.

8. King County criminal justice agencies consider the AFIS program to be essential to law enforcement, and the AFIS program has been recognized for its exceptional standards and service. The program’s regional model has provided effective crime-solving support to all criminal justice agencies in King County since its inception in 1988. The current AFIS program provides for many shared services, including:

a. The purchase, maintenance, and staff operation of the AFIS computer which stores, searches and provides potential matches for fingerprints and palmprints;

b. The purchase, maintenance, training and support for fifty-five Livescans, which are fingerprinting devices installed throughout King County for the purpose of collecting high-quality prints from arrestees and applicants and transmitting them electronically for a faster and more efficient comparison and response;

c. The purchase, maintenance, training and support for three-hundred handheld mobile identification devices, which enable officers to quickly search fingerprints in the field, aiding the officers in determining whether to detain or release an unknown subject;

d. The recording of high-quality fingerprints in county jail facilities, and fingerprint examiners available twenty-four hours a day and seven days a week, for the quick identification of arrested individuals;

e. Examiners and technicians who collect prints from crime scenes, process items of evidence chemically, preserve those prints photographically, and search them in AFIS to identify unknown potential suspects or store the unidentified prints for continual search as new records are added to the system; and

f. Training on fingerprint collection and crime scene processing, and customer support for all law enforcement agencies.

9. During the last six years, the AFIS program has maintained

effective operations, achieved efficiencies to reduce staffing, updated the AFIS computer, replaced end-of-life MobileID devices, and replaced the outdated and undersized processing laboratory and AFIS offices.

10. The AFIS program has developed a seven-year budget overview with associated revenue projections for 2026-2032. The proposed levy would maintain current services with a first-year levy rate that is lower than the first-year levy rate approved by voters in 2018.

11. The AFIS program produces publicly available annual reports that provide status updates on program initiatives and accomplishments. The success of the regional AFIS program has been a result of regular collaboration with law enforcement agencies across King County.

12. The proposed levy will be authorized for seven years.

### BE IT ORDAINED BY THE COUNCIL OF KING COUNTY:

**SECTION 1. Definitions.** The definitions in this section apply throughout this ordinance unless the context clearly requires otherwise.

A. “AFIS” means automated fingerprint identification system.

B. “AFIS computer” means the automated fingerprint identification system, which is the computer system that utilizes AFIS as its foundation, and through modular design incorporates other databases of criminal identification records, and related equipment, technology, networks and interfaces employed by trained staff for capturing, storing and comparing criminal identification records based on friction ridge analysis, or successor technology.

C. “AFIS program” means the acquisition, implementation, maintenance and operation of the regional AFIS computer. “AFIS program” also means the countywide effort of trained personnel who, through fingerprints, palmprints and other identification methods: identify detained persons; identify suspects of crimes from fingerprints and palmprints left on evidence at crime scenes and other locations; assist in the conviction of criminals through these identifications; train law enforcement on crime scene evidence collection and identification methods; support accurate and complete criminal history records; conduct field research aimed at improving and enhancing program services; and otherwise enhance public safety as consistent with this ordinance and permitted by law.

D. “Levy” means the levy of regular property taxes, for the specific purpose and term provided in this ordinance and authorized by the electorate in accordance with state law.

E. “Levy proceeds” means the principal amount of moneys raised by the levy, any interest earnings on the moneys, and the proceeds of any interim financing following authorization of the levy.

**SECTION 2. Levy submittal to voters.** To provide necessary moneys for the AFIS program, the King County council shall submit to the qualified electors of the county a proposition to reauthorize an expired regular property tax levy in excess of the levy limitation contained in chapter 84.55 RCW for seven consecutive years, with collections beginning in 2026, at a rate not to exceed \$0.0275 per one thousand dollars of assessed value in the first year of the levy period. The dollar amount of the levy in the first year shall be the base upon which the maximum allowable levy amounts in years two through seven (2027-2032) shall be calculated using the limit factor in chapter 84.55 RCW, as amended.

**SECTION 3. Deposit of levy proceeds.** All levy proceeds collected as authorized in this ordinance shall be deposited into a subfund in the automated fingerprint identification system fund and used only for the eligible expenditures described in section 4 of this ordinance.

**SECTION 4. Eligible expenditures.** If approved by the qualified electors of the county, all proceeds of the levy authorized in this ordinance shall be used to pay the costs of the AFIS program, together with the necessary software and hardware operations

and maintenance expenses and such sums as are necessary to provide for the costs incurred by the county that are attributable to AFIS levy elections. Eligible expenditures include the salaries, benefits, training, office and laboratory supplies and equipment, workspace, contracted goods and services, related studies and research, administration, and other costs incidental to the operation and enhancement of the regional AFIS program. Workspace expenditures may include the lease, rental, or purchase of land or building space to house AFIS program technology, staff, or laboratory functions.

Eligible expenditures shall also include nonbonded debt and finance costs and the reimbursement of extraordinary expenditures incurred by the county after the effective date of this ordinance with regard to the AFIS program. The AFIS levy is intended as supplemental funding to maintain the current expanded crime scene and arrest identification technology and services on a shared regional basis, which lowers the cost of technology and staff through economy of scale and makes the benefit accessible to all agencies. The levy shall not at any time provide general criminal justice funding or fund programs or purposes not otherwise consistent with this ordinance.

**SECTION 5. Call for special election.** In accordance with RCW 29A.04.321, the King County council hereby calls for a special election to be held on April 22, 2025. The King County director of elections shall cause notice to be given of this ordinance in accordance with the state constitution and general law and to submit to the qualified electors of the county, at the said special county election, the proposition hereinafter set forth. The clerk of the council shall certify that proposition to the King County director of elections in substantially the following form, with such modifications as may be required by the prosecuting attorney:

King County

Proposition No. 1

Regional Automated Fingerprint Identification System (AFIS) Levy

The King County council has passed Ordinance \_\_\_ concerning this proposition for the regional automated fingerprint identification system (AFIS) levy. This proposition would fund the continued operation of the AFIS program to provide enhanced forensic fingerprint and palmprint technology and services to aid in the administration of justice. It would authorize an additional property tax for seven years beginning in 2026 at \$0.0275 per \$1,000 of assessed valuation, use the 2026 levy amount to compute limitations under Chapter 84.55 RCW for subsequent levies in 2027-2032, and exempt eligible seniors, veterans, and disabled persons under RCW 84.36.381. Should this proposition be:

Approved [ ]

Rejected [ ]

**SECTION 6. AFIS advisory committee extension.** If the levy is approved by the voters in accordance with section 5 of this ordinance, the AFIS advisory committee previously authorized by the voters shall be retained to review AFIS operations and expenditures and make recommendations concerning the AFIS program.

**SECTION 7. Ratification.** Certification of the proposition by the clerk of the King County council to the director of elections in accordance with law before the election on April 22, 2025, and any other act consistent with the authority and before the effective date of this ordinance are hereby ratified and confirmed.

**SECTION 8. Severability.** If any provision of this ordinance or its application to any person or circumstance is held invalid, the remainder of the ordinance or the application of the provision to other persons or circumstances is not affected.