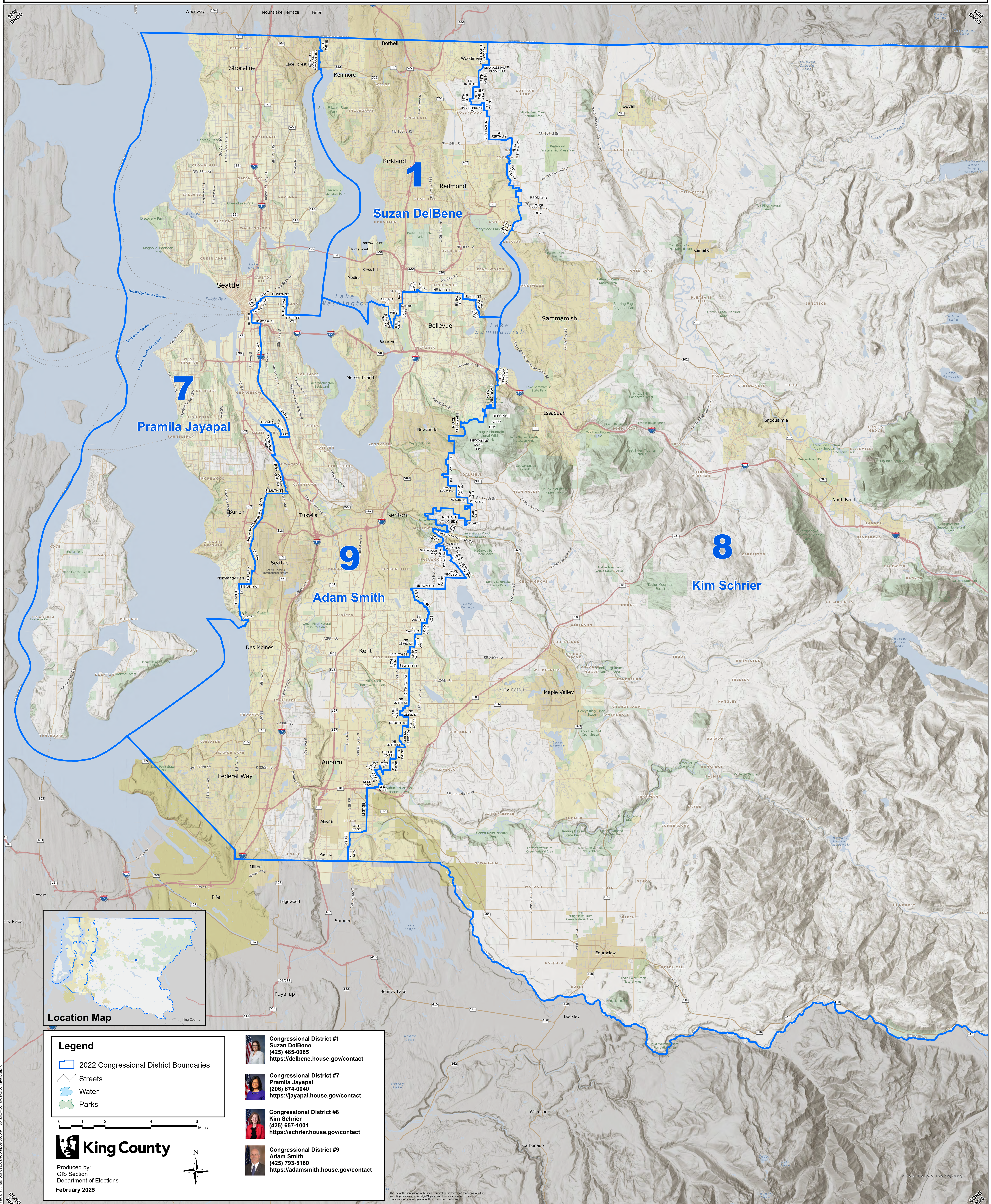


2022 Congressional Districts

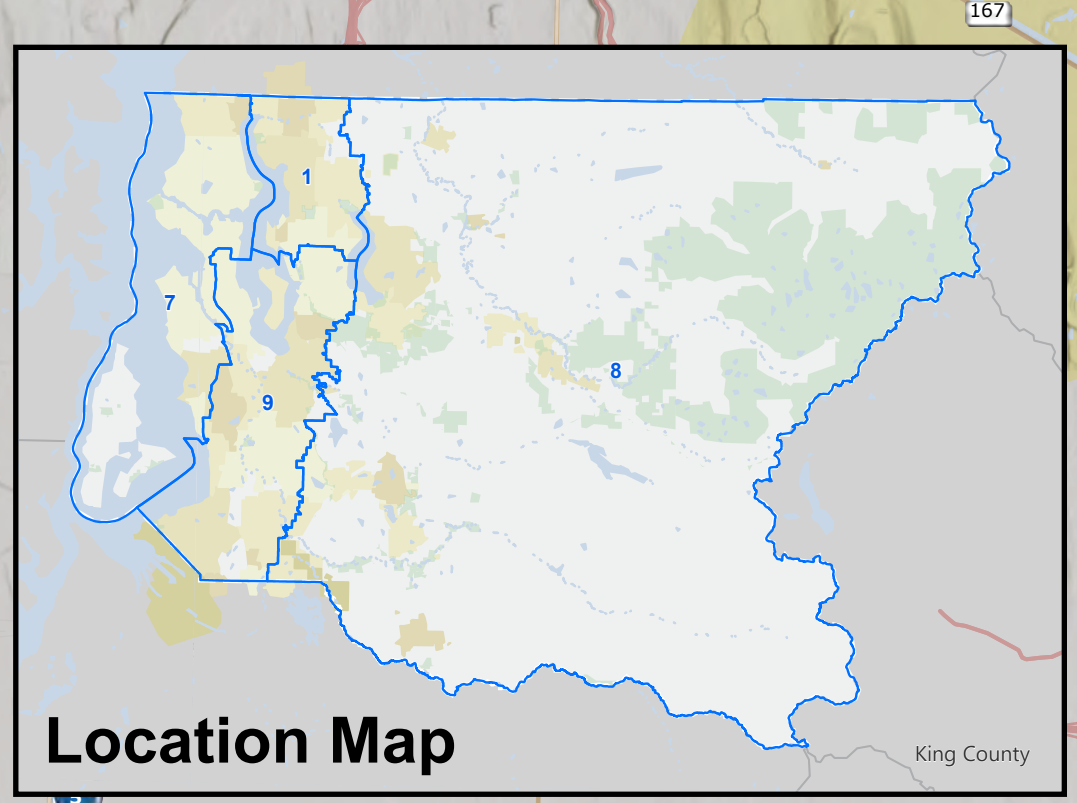


1
Suzan DelBene

7
Pramila Jayapal

9
Adam Smith

8
Kim Schrier



Legend

- 2022 Congressional District Boundaries
- Streets
- ~ Water
- + Parks

0 1 2 4 6 Miles

King County

Produced by:
GIS Section
Department of Elections
February 2025

| | |
|---|---|
|  | Congressional District #1 Suzan DelBene (425) 485-0085 https://delbene.house.gov/contact |
|  | Congressional District #7 Pramila Jayapal (206) 674-0040 https://jayapal.house.gov/contact |
|  | Congressional District #8 Kim Schrier (425) 657-1001 https://schrier.house.gov/contact |
|  | Congressional District #9 Adam Smith (425) 793-5180 https://adamsmith.house.gov/contact |

The use of the information in this map is subject to the terms and conditions found at: <https://www.kingcounty.gov/transportation/transportation-services/transportation-services/transportation-services.aspx>