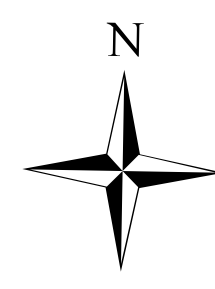


# Legislative District 47

## Legend

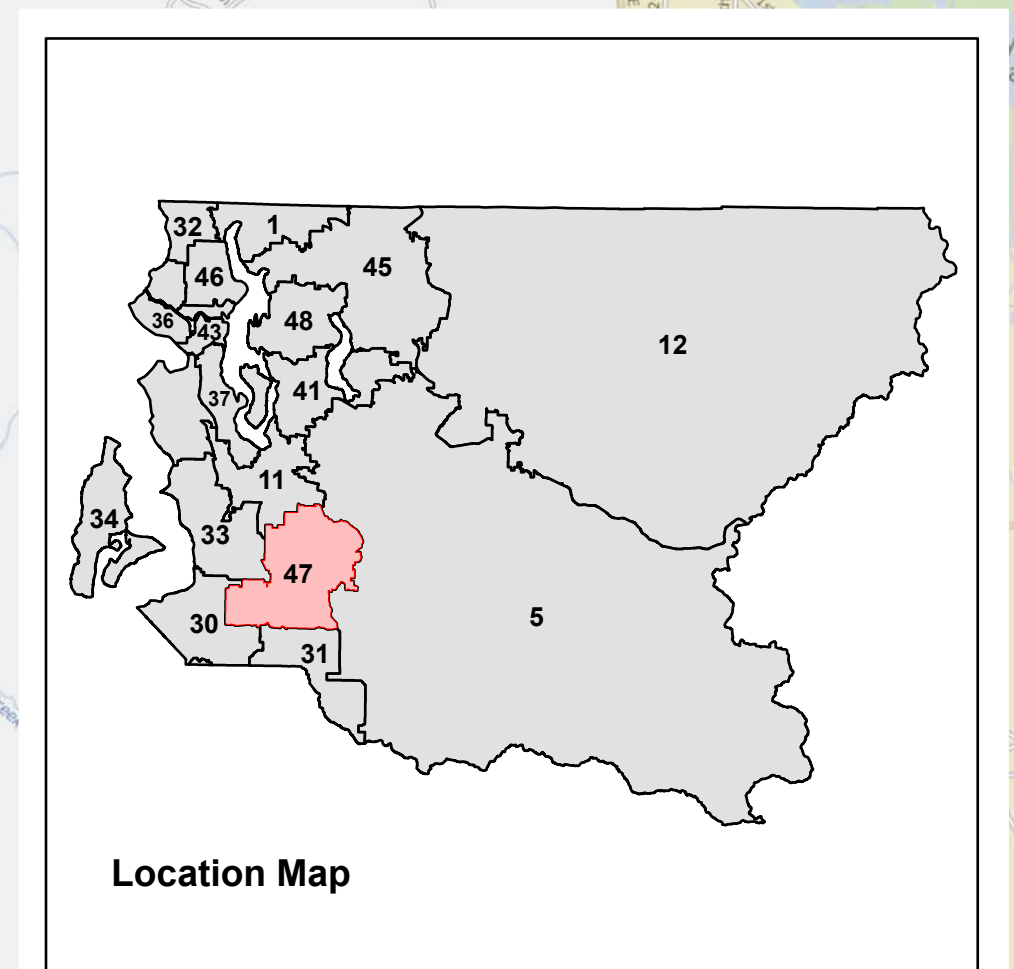
- 2025 Precincts
- Cities
  - Auburn
  - Covington
  - Kent
  - Unincorporated King County
- County Council District Boundaries
- Congressional District Boundaries
- Streets
- Water
- Parks



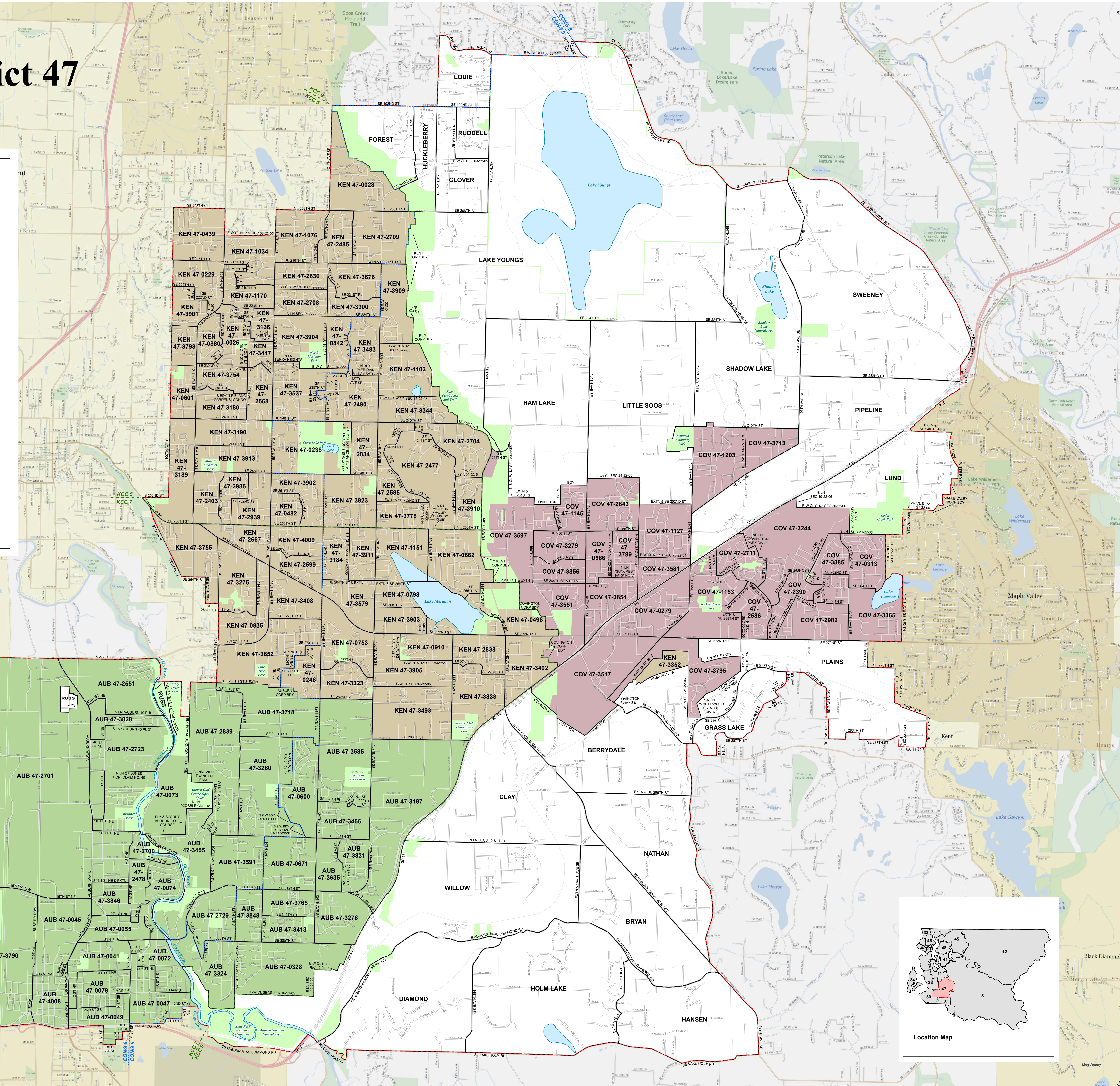
0 0.17 0.35 0.7 1.05 1.4 Miles



Produced by:  
GIS Section  
Department of Elections  
February 2025



Location Map



LEG 47  
2025

LEG 47  
2025