


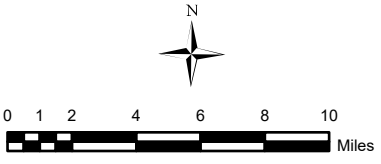
### Legend

Failure to Cure Rate  
County average is 47%

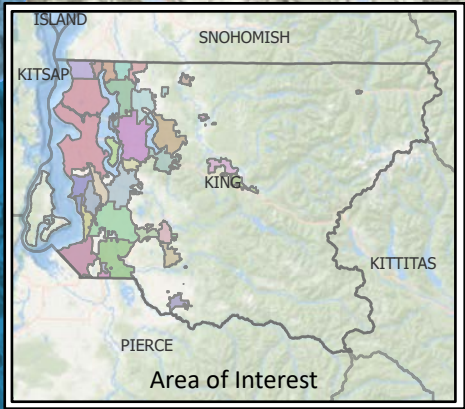
- 0 - 35%
- 35% - 45%
- 45% - 55%
- 55% - 65%
- 65% - 100%
- Cities



Data Source: KCE 2024 Voter Registration Database and Census 2020 Tracts Tiger Files



*The fail to cure rate is determined by dividing the number of ballots left uncured by the number of ballots challenged*



Produced by:  
GIS Section  
Department of Elections  
March 2025

The information included on this map has been compiled by King County staff from a variety of sources and is subject to change without notice. King County makes no representations or warranties, express or implied, as to accuracy, completeness, timeliness, or rights to the use of such information. This document is not intended for use as a survey product. King County shall not be liable for any general, special, indirect, incidental, or consequential damages including, but not limited to, lost revenues or lost profits resulting from the use or misuse of the information contained on this map. Any sale of this map or information on this map is prohibited except by written permission of King County.

Path: X:\Custom Maps\SigChallengeMaps\SigChallengebyCensus\SigChallengebyCensus.aprx

# Failure to Cure Rate by Census Tract 2024 General Election