

A note from King County Elections

This edition of the voters' pamphlet includes **only** the contests for which candidates submitted statements. Other contests, not included in this pamphlet, may appear on your ballot.

The following content, in the form of candidate statements and ballot measure pro, con and rebuttals, are solely the responsibility of the those submitting the statements. This information is not verified or endorsed by King County Elections.

Explanatory statements for all ballot measures and resolutions are prepared or approved by the jurisdiction's attorney.

The complete text of the ballot measures can be found online at www.kingcounty.gov/elections .



King County
Elections

Table of contents

King County.....	56	Fire Districts.....	88
Court of Appeals.....	61	Water Districts	89
Port of Seattle	62	Wastewater District.....	90
City of Lake Forest Park.....	65	Hospital District.....	91
City of Seattle.....	67	King County Charter Amendments	92
City of Shoreline.....	80	Text of Charter Amendments	96
School Districts	82	Additional Voting Information.....	99

56 King County Executive (nonpartisan office • short and full term)



Susan Hutchison

PO Box 45400
Seattle, WA 98145
206-337-0014
SusanHutchison.com

Occupation: Executive Director - Non-Profit Arts and Sciences Foundation

Education: B.S. -- University of Florida

This year's election for King County Executive provides voters a clear choice between the old way of partisan politics or the new way of BRINGING PEOPLE TOGETHER TO GET THINGS DONE – that's my commitment to you.

As the Executive Director of an arts, science and education foundation, as well as years of service in leadership roles at the Seattle Symphony, Children's Hospital and Salvation Army, I've established a successful record of bringing diverse people and interests together to solve complex problems.

I am a **BUDGET REFORMER, NOT A CAREER POLITICIAN**. I do NOT believe the answer to budget problems is a higher fee or new tax. I'll use my leadership experience in the private and non-profit sectors to cut wasteful spending and balance the budget.

I'LL WORK for the PEOPLE of King County to:

HELP SMALL BUSINESSES CREATE JOBS. Small businesses are the engine of our economy. I'll fight for tax incentives for small businesses to create new jobs, encourage businesses to locate here, and keep existing businesses from leaving.

EASE CONGESTION THROUGHOUT OUR REGION. Traffic gridlock is killing jobs. I'll appoint a leader to coordinate our transportation policy so our multiple agencies work together to cut costs and increase efficiency.

PROTECT OUR ENVIRONMENT. I'll work cooperatively with environmental, labor and business groups toward goals that serve our entire community.

I am proud to be **ENDORSED BY DEMOCRATS:** Lieutenant Governor Brad Owen, State Auditor Brian Sonntag and former Congressman Don Bonker, **AND REPUBLICANS:** Attorney General Rob McKenna, former Governor Dan Evans and former Secretary of State Ralph Munro. If you want positive change, and strong, independent leadership, I humbly ask for your support. **Working together** we can again make King County the best place to live and work. Thank you for your vote!



Dow Constantine

PO Box 16285
Seattle, WA 98116-0285
206-484-7921
www.dowconstantine.com

Occupation: Chair: County Council, Sound Transit Operations; former State Senator; Attorney

Education: Law Degree, Master's Degree in Urban Planning, and Bachelor's Degree, UW; West Seattle High School

Dow Constantine: Real Reform – and Results to Prove It
Dow Constantine is a no-nonsense reformer who knows how to lead on tough issues. Dow was the first candidate for King County Executive to offer a plan to reform King County and cut county benefit costs, praised by *The Seattle Times* as "a dose of economic reality."

Instead of sound bites, Dow leads by example: passing a countywide hiring freeze, slashing administrative costs, and implementing performance measures. His budget plan identifies \$75 million in savings, streamlining bureaucracy and cutting

overhead. **Dow will balance the budget and protect core services, from parks to public safety, without new taxes.** His proposal was hailed by the Times as "the most detailed blueprint to date for balancing the 2010 budget."

A Vision for All of King County: Dow represents suburban, rural, and urban neighborhoods. Dow rejects tired political divisions that pit communities against each other.

A Champion for Jobs: The son of teachers and grandson of a sawmill worker, Dow will cut red tape for small businesses, fight for new careers in clean energy and biotechnology, and protect manufacturing jobs.

Proven Transportation Leadership: Dow helped lead the successful effort to expand light rail across King County. He proposed hundreds of millions in Sound Transit savings, and shifting funds from ferry expansion proposals to save Metro bus service.

Genuine Environmental Commitment: Dow helped stop a multinational mining company from despoiling Puget Sound, and led with action on climate change, preserving open space, and saving parks from threats of closure.

Dow Constantine offers plain-spoken, honest leadership, committed to reform that is true to our fundamental values.

Select Endorsements: Firefighters; Paramedics; Sierra Club; Conservation Voters; County Democrats; business leaders; NARAL Pro-Choice; Planned Parenthood Votes; County Labor Council; Senator Maria Cantwell; Senator Patty Murray.

Highest Rated: Municipal League



Sue Rahr

PO Box 21251
Seattle, WA 98111
206-443-1990
www.suerahr.com

Occupation: Sheriff of King County

Education: BA, Criminal Justice- Washington State University,
Cum Laude

As your Sheriff, I had to cut 87 deputies and critical personnel last year because of the county budget crisis. And more cuts are scheduled for this year. That's why I need your vote and your help now to fight for the protection you deserve.

As the top law enforcement officer of Washington State's largest county, I oversee an organization of over 1000 employees

and a \$150 million budget in a county that spans over 2,100 square miles. This includes providing police services to 12 cities, Metro Transit, Sound Transit, the Muckleshoot Tribe, the United States Forest Service, and the King County International Airport.

It is my job to sound the alarm when police services drop below the level you elected me to uphold. The budget may be in crisis, but I will not stand by silently while deputies are cut and county programs such as the foot ferries and high priced bureaucrats take valuable resources we should be using to protect you. I need you to pay attention to budget talks this year – and join me in telling your County Councilmembers that we cannot cut this Sheriff's budget any further.

It has been my honor to serve you. Together, let's ensure that King County remains a safe place to live.

Sue Rahr spent 30 years rising through the Sheriff's office ranks – from patrol deputy to head of the Gang Unit to Chief of Field Operations. Sue was appointed Sheriff to finish the term of now-Congressman Dave Reichert, and faced the voters in 2005, winning with a 77% majority. She was elected the first female sheriff in King County's 155 year history. She is the only woman on the National Sheriff's Association Executive Board and frequently speaks on behalf of urban sheriffs.

58 King County Assessor (nonpartisan office • unexpired 2-year term)



Graham Albertini

PO Box 50134
Bellevue, WA 98015
425-747-4336
GrahamAlbertini.com

Occupation: Certified Residential Appraiser, Former Appraisal Manager, College Instructor.

Education: B.A. University of Washington. UW Certificate in Organizational Communication

I have the experience and the backbone to be the "Taxpayers' Advocate" - as your next King County Assessor.

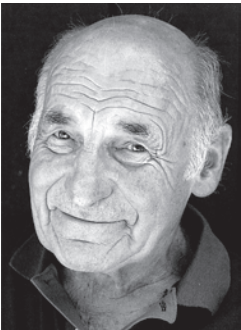
My qualifications and experience are ideal to lead the Assessor's Office. I have been a full-time appraisal professional since the age of 22. At age 26 I was promoted to manage a large appraisal department in Bellevue. I am one of fewer than 700 people nationwide certified to teach the Appraisal Standards course that

all licensed appraisers must pass, and have trained many new appraisers - including some who now work in the Assessor's Office. In addition to working as an appraiser, I serve as an instructor at North Seattle Community College and the Rockwell Institute, instructing my students that high standards are not negotiable.

I know what it takes to stand up for your interests. As a former Washington Mutual employee I was appalled at the sub-standard property appraisals they were using to make bad loans. I publicly exposed their disreputable appraisal practices. The collapse of the banking giant is a potent reminder that lax appraisal standards can have disastrous effects. I fought for fiscal prudence to protect borrowers and shareholders, and, as King County Assessor I'll fight just as hard to protect your interests as property owners.

As your Assessor, I will • Work to ensure homeowners are taxed on a realistic assessment of their home, not on the peak value from the boom years • Maintain professionalism and ethics within our nationally recognized assessor's department • Be a prudent manager of your resources • Bring fresh ideas from the private sector.

King County taxpayers need an Assessor who is competent and fair. I proved with WaMu that I will stand up for what is right. I'm ready to serve as your Assessor. I ask for your vote.



Gene Lux

10850 Dixon Drive S
Seattle, WA 98178
206-772-3177
evlux@comcast.net

Gene Lux has been a resident of King County since 1942. After graduating from Cleveland High School and working in the home building industry, Gene took many correspondence courses and attended extension courses at U.W. Gene has served 12 years on the Group Health Coop Board, now serves as the senior caucus representative on the Washington Senior Lobby Board in Olympia.

Gene has been a general contractor and residential property developer since the 1950s.

In the early 1970s and 80s Gene served 13 years in the Washington House of Representatives with two appointments to the Washington State Senate.

Gene has served on the Washington State Health Care Authority, Public Employee Benefits Board and on the Funeral Directors and Embalmers Board.

As a fire Commissioner for Fire District #20 in the unincorporated area of Skyway he is very aware of how critical the Dept. of Assessments affects the district budget.

Gene has served on the board of the King County Fire Commissioners Association as well as the Washington State Fire Commissioners Association.

Gene has lived in the West Hill area for 30 years and serves as a board member on the West Hill Community Council.

Your support is appreciated.



Lloyd Hara

466 Smith Street
Seattle, WA 98109
206-726-8053
www.lloydhara.com

Occupation: Seattle Port Commissioner and Small Business Owner

Education: BA in Economics, U of Wash.; Masters in Public Administration, U of Wash.

The work of the Assessor's Office has a direct effect on the property taxes you pay. Your next assessor needs to have a record of solid management skills, integrity, and dealing with taxpayers in a fair and open manner.

I fit the bill. I'm **Lloyd Hara**, and I'm asking for your vote.

I've spent my career working for you – as a national award-winning Seattle City Treasurer and King County Auditor, an Army officer, regional FEMA Director, and currently as a watchdog – not a lapdog – on the Port Commission.

I've successfully run complex public agencies dealing in financial matters, managing hundreds of employees, and holding myself and the agencies to the highest public accountability standards. I'm a proven manager, not just a number cruncher.

Here's what I'll do: **Fight** to get seniors greater property tax relief -- **Ensure** your property is fairly and equitably assessed at current values -- **Reform** the Assessor's office to be more accessible, so taxpayers get questions answered -- **Order** a performance audit to find out what's right, what's wrong, and then fix it.

Times are tough for our neighbors who have lost wages, life savings, even their homes. Plunging real estate values have spurred a record number of property tax appeals. This is no time for unnecessary risks -- King County needs a proven manager with a record of fairness and integrity. I'd appreciate your vote.

I am endorsed by over 700 civic leaders, organizations, former officials, and prominent citizens, including Speaker Frank Chopp, former Auburn Mayor Chuck Booth, King County Democrats, Bull Moose Republicans, Aerospace Machinists Local 751, Builders United in Legislative Development, Seattle Councilmember Richard Conlin, Inlandboatmen's Union, Bellevue Councilmember Conrad Lee, Sea-Tac Fire Fighters, State Representatives Eric Pettigrew, Judy Clibborn, Dave Upthegrove, State Sen. Claudia Kauffman, and Carpenters and Joiners Local 1797.



Bob Rosenberger

9686 54th Avenue S
Seattle, WA 98118
206-396-7891
bobrosenberger.com

Occupation: Retired Deputy Assessor and real estate investor

Education: University of Washington, BA Sociology; International Association of Assessing Officers, advanced classes including Assessment Administration

King County deserves an Assessor who will be ready to work from day one. That Assessor is Bob Rosenberger, a widely respected and experienced professional who knows what it takes to ensure that: • You pay only your fair share of taxes • Teachers, firefighters, nurses, and police keep providing needed services through fair and accurate distribution of levies • Senior citizens stay in their homes in the face of changing economic conditions.

Bob is the only candidate with 24 years of prime responsibility

for appraising thousands of complex properties across the county – from the home you might own or rent all the way up to large commercial and industrial projects.

While the Assessor's office has won awards for service and outreach, Bob will place more information on the web and improve communication with other agencies.

Bob Rosenberger understands the technical aspects of tax law. He understands real estate; he spent seven years in brokerage, and now invests in residential property. He knows the importance of reliable results.

Bob served as shop steward and has been a local leader in the International Association of Assessing Officers. He has attended five International Conferences as well as qualifying as an instructor.

In these hard times, Bob knows where to cut costs while improving outcomes. He will run a leaner and greener department to the benefit of the taxpayers.

Bob Rosenberger believes in current value appraising to assure accuracy and fairness. He will work to reduce exemptions that merely shift taxes onto the rest of us.

King County voters need an Assessor who won't create more risk in an already risky economic environment. That is why Bob Rosenberger has the endorsements of former Assessor Ruthie Ridder, Senator Margarita Prentice, Senator Joe McDermott, Representative Sharon Tomiko Santos, and other regional leaders.

60 **King County Assessor**
(nonpartisan office • unexpired 2-year term)



Bob Blanchard

13223 NE 89th Street
Redmond, WA 98052
425-298-9851
www.BobBlanchard.net

Occupation: Certified Public Accountant

Education: B.A., University of Washington

I have the experience to make the tough decisions, to be fair and to operate with the highest integrity. I am a Certified Public Accountant that has conducted audits of public entities, as well as, government programs. I have been an officer and tax manager of a national real estate developer and management company. I have appealed property assessments in various jurisdictions. I am a Vietnam era Veteran. I was a paratrooper with the 82nd Airborne. I have the toughness and management skills to head a department undergoing budget cuts.

A June 1, 2009 state audit criticizes the assessor's office for not having adequate policies and procedures over personal property tax refunds. A spokesman at the Assessor's office recently stated that he has only two people to deal with the 13,000+ tax appeals. He is quoted as saying "something has to change." I understand effective internal controls and I will take action to insure that these problems are addressed.

Current and future budget cuts will require the Assessor to re-allocate resources. I will return to reassessing property every two years like many other counties do, saving both manpower and other expenses. My experience working as a CPA auditor will enable me to assess the problems and take corrective actions.

It is clear that government will be required to operate with less revenue. Taxpayers are hurting. The answer is not new taxes. The Assessor's office will need to operate more efficiently and at a lower cost.

I offer King County Voters the opportunity to elect someone who has operated his own business. I know when times are tough you have to make adjustments on the way you operate. My private sector business experience has given me the management skills to provide the leadership needed. I ask for your vote.



Bob Ferguson

8255 Second Avenue NE
Seattle, WA 98115
206-523-7245
www.electbobferguson.com

Occupation: King County Councilmember; former attorney at Preston Gates & Ellis.

Education: Graduate of UW (B.A., 1989) and New York University (J.D., 1995).

Bob Ferguson is committed to protecting public safety, health, and human services and has a proven record of improving government and spending tax dollars wisely. His common sense approach to budgeting – for example, purchasing used furniture to outfit a new King County office building – saves money to preserve core services. His recent budget transparency legislation makes the budget a better tool for citizens and policy-makers to track where dollars are spent and eliminate waste.

A reformer: Bob led efforts to improve access to public records, establish civilian oversight of the sheriff's office, and revamp county elections.

An attorney and former human services agency director: Bob understands the importance of justice for all and the tie between crime reduction and social services. He has been a leader in: protecting drug and mental health court; securing funding for mental health; and fighting for millions of dollars to support veterans and human services.

An avid outdoorsman: Bob championed the Open Space Preservation Act to protect open space for future generations.

A bus commuter: Bob is committed to improving transit.

A fourth generation Washingtonian: Bob and his wife Colleen live in Maple Leaf with their twin toddlers.

Court of Appeals, Division No. 1, District No. 1 **Judge Position No. 3** (nonpartisan office • 6-year term)



Anne L. Ellington

PO Box 1827
Seattle, WA 98111
206-748-1488
www.judgeanneellington.com

Occupation: Judge Ellington serves on the Court of Appeals.

Education: She received her law degree from UW in 1974.

Biographical Information

Judge Ellington was a Supreme Court law clerk, an assistant attorney general, and partner in a local law firm before her election to King County Superior Court, where she served for 10 years and was the first woman elected as Presiding Judge. She was appointed to the Court of Appeals in 1995.

Candidate Statement

Growing up in a large family, Judge Ellington learned to work hard and share the good things. She believes in respect and fairness toward those who appear before her, and strives for justice and clarity in her decisions. She is regarded as a

fair, practical, and hardworking judge and has a reputation for integrity, intelligence, legal ability, compassion, and courage.

Our courts are the centerpiece of our democracy. Without the rule of law, we would have no freedom. Judge Ellington believes our courts must be independent, accessible and responsive. She is passionate about her work and about her efforts to ensure access to the courts and to reduce delay.

Judge Ellington receives excellent ratings (“exceptionally well qualified”) and has been honored three times as Outstanding Judge (King County Bar Association, Washington Women Lawyers, and Washington State Trial Lawyers Association). She received the Judicial Leadership Award from the Access to Justice Board, the President's Award from the National Association of Women Lawyers, the White Ribbon Award from the Washington Coalition of Citizens with disAbilities, and was named Distinguished Alumna by UW law women's caucus.

She regards the opportunity to serve on the court as a great privilege and responsibility, and is honored to serve this community. Please vote to re-elect her. Thank you.

Endorsements

Supporters include [Governor Christine Gregoire](#), [Chief Justice Gerry Alexander](#), [King County Prosecuting Attorney Dan Satterburg](#), former [Superior Court Presiding Judge Charles V. Johnson](#), [Ruth Woo](#), [Judy Maleng](#), and the [37th District Democrats](#).

62 Port of Seattle Commissioner Position No. 1 (nonpartisan office • 4-year term)



John Creighton

PO Box 9362
Seattle, WA 98109
206-320-1238
www.johncreighton.org

Occupation: Business lawyer specializing in corporate financings and cross-border transactions.

Education: JD, Columbia University; BA and MA, International Relations, Johns Hopkins University; Interlake High School, Bellevue

Re-elect John Creighton: Effective Leadership, Real Reform

An independent, progressive thinker, John Creighton has championed family wage jobs, public accountability and environmental sustainability as your Seattle Port Commissioner. Committed to improving competitiveness and trade, John has worked effectively on transportation and freight mobility issues important to the region.

John understands that one out of every three jobs in the region is based on international trade, yet the Port risks falling behind in its ability to drive economic development in King County. That's why he has worked hard to:

- Increase the number of family wage jobs generated by Port operations.
- Ensure that critical Port infrastructure is built, maintained and protected with the least burden to taxpayers.
- Implement real reform of Port operations, including more accountable contracting, internal audits, stronger staff oversight, and better controls and procedures.
- Strengthen the Port's commitment to the environment.
- Explore productive areas of cooperation with other ports and regional governments in the Northwest.

John is working effectively to bring new energy and leadership to the challenges facing the Port. That's why he has the support of a wide cross-section of our region's leaders, from business, labor, environmental, community and many other sectors, Democrats, Republicans and Independents.

"Creighton has demonstrated a clear vision for the future of our Port and we're confident he'll continue to lead on environmental issues on the Commission." -- Washington Conservation Voters

"John sees the big picture and understands that keeping the Port competitive requires a responsible fiscal policy and a close eye on costs in the interests of both tenants and taxpayers. He has the leadership to deliver for working families, businesses and ultimately for the residents of King County." -- Brad Tilden, President, Alaska Airlines

Please join them in supporting John Creighton for Seattle Port Commissioner!



Rob Holland

PO Box 22562
Seattle, WA 98122
206-353-0689
www.robforport.com

Occupation: Biofuel/Truck Fleet Fuel Salesman

Education: Masters of Public Administration, Seattle University, 2004

Rob Holland For Port Commission Direct Port Experience

Rob is the only candidate in this position with diverse, hands-on Port experience—a nearly two decade career working with shipping companies, trucking and freight firms, trade and development offices, and industrial real estate.

Rob is uniquely qualified to bring accountability and a renewed focus on job creation, community protection and environmental stewardship to build a world class Port that drives our regional economy.

A Plan For Jobs

Supported by small business leaders, unions and waterfront industries, Rob is the only candidate with a detailed plan for job creation, with a focus on “green” jobs that make our Port not only competitive, but sustainable.

Caring for Communities

Rob will make sure that communities and neighborhoods around Port facilities are respected and treated fairly. Rob’s goal is to resolve issues BEFORE they become time and resource wasting problems.

Environmental Stewardship

Rob will follow through on commitments to make the Port a partner in Puget Sound cleanup, reduce greenhouse emissions, and meet clean air targets.

Endorsements That Matter

According to *The Seattle Times*, “The Port Commission needs people who are smart, who will do the work, and who have a broad view of the public’s interest and how the Port fits into it. We endorse Rob Holland.”

Also endorsed by Sierra Club, King County Democrats; King County Labor Council; Rep. Adam Smith; more than a dozen legislators, Mayors of Kent, SeaTac, Burien; firefighters; business leaders and hundreds more...



David Doud

PO Box 892
Bellevue, WA 98009-0892
425-985-4081
info@daviddoud.com

Occupation: Investment Properties Broker

Education: MBA from Thunderbird School of Global Management

David Doud will continue reforming the Port, ensure that the work of the Port is done ethically and fight to bring new jobs to King County. David is someone the voters can count on to make sure that Port contracts and leases benefit King County taxpayers.

The Port of Seattle links our state to the world’s economy – and it’s our best hope for creating jobs and getting our region out of this recession. David graduated from a top international business school, has worked here and abroad in business, and understands the importance of family wage jobs to our local economy.

Currently there are no Port Commissioners from outside Seattle, though the Port serves and derives taxes from all of King County. David’s county-wide endorsements demonstrate that he will represent the north, south and east reaches of the county as well as Seattle on the Commission. David has support from over a dozen mayors, including Bothell, Auburn, Bellevue, Enumclaw and Federal Way.

David Doud’s bipartisan endorsements include Democrats like former Governor Booth Gardner, former Seattle Mayors Charles Royer and Wes Uhlman, State Democratic Legislators Judy Clibborn, Deb Eddy, Mark Ericks, Larry Springer and civic leaders such as Ken Bunting and Nate Miles. Republican endorsements include Attorney General Rob McKenna, County Council members Kathy Lambert, Jane Hague, Reagan Dunn, and Peter von Reichbauer. Even Seahawks Quarterback Matt Hasselbeck supports him. Finally, David is endorsed by community leader Al Yuen, his other primary opponent.

Six unions who have labor contracts with the Port have raised over \$120,000 to buy the Port Commission. David’s opponent is being supported by out-of-state labor organizations who want to control the Port. David is an independent voice, not someone in the back pocket of the union bosses. David Doud is running for the taxpayers of King County.

64 Port of Seattle Commissioner Position No. 4 (nonpartisan office • 4-year term)



Tom Albro

300 Lenora Street #226
Seattle, WA 98121
206-443-1990
www.albroforport.com

Occupation: Small business owner, Municipal League Chair (former), and Civil Engineer.

Education: University of Washington, BS Civil Engineering; American Marshall Memorial Fellow; Leadership Tomorrow.

Tom Albro has a wide spectrum of support in the region, from **Washington Conservation Voters** to the **Eastside Business Alliance**, from *The Seattle Times* to *the Stranger*. In addition, he has **Allied Arts**, the **Board of Realtors**, and is the only candidate for Port Commission to receive an **“Outstanding” rating by the Municipal League**.

In the primary, special interests bankrolled by out-of-state organized labor called themselves “Port Reform,” putting

\$120,000 in the bank to oppose candidates not partisan to them. But, they underestimated the public’s demand for impartiality and honest debate. Beware of their tactics in the General Election.

Tom won the primary by more than 30,000 votes. Tom Albro is an independent voice, not a career politician, nor a pawn of special interests.

Tom believes that rebuilding the public’s confidence in the Port is imperative, but its key role is being the engine that drives the region’s economy. He says: **“Lots of other Ports want our business and our jobs – from Los Angeles to Vancouver to the Panama Canal: our job is to be more competitive and not be beaten by Ports with lower worker or environmental standards.”**

Tom says, **“I also have a strong, passionate commitment to reducing the Port’s environmental impacts by implementing smart operating practices, more innovation and wise stewardship.”**

Local leaders from both sides of the aisle support Tom Albro: Gov. Dan Evans (former), Rep. Deb Eddy, Rep. Eric Pettigrew, Mayors Ava Frisinger (Issaquah), Grant Degginger (Bellevue), King County Council Member Peter von Reichbauer, and former Council Member Peter Steinbrueck (Seattle).

Tom knows how to move freight and people (owner of Seattle Monorail Services, former manager at UPS) and owned his first business before he was 30. He recently merged his local medical records business with a national firm, preserving the jobs locally.



Max Vekich

PO Box 19511
Seattle, WA 98109
206-658-3514
www.max4ourport.com

Occupation: Longshore Worker, former four term Democratic Legislator

Education: BA University of Puget Sound; Grays Harbor College, Student Body President

The old ways of doing business at the Port of Seattle are over. It’s time to move forward with experienced leadership committed to reform, job creation and environmental stewardship.

Instead of another insider, we need an advocate who will open doors to trade, improve accountability, and be a true partner for Puget Sound cleanup.

I’ve served eight years as a legislator chairing critical trade and economic development committees, worked on the docks as a longshoreman and marine trade representative,

and spent a lifetime fighting for good jobs and open, transparent government.

On the Port Commission I’ll be a strong, principled voice for change, and bring needed legislative and coalition building skills to this critical position. I’ll be a voice for all the people of King County, not a select few: Transparency and Accountability

The Port has been distracted by scandal and fraud—undermining public confidence. I bring the oversight experience to ensure the Port does what the public asks and pays for. I’ll fight for policies that increase transparency!

Environmental Leadership

I’ll work to implement new technologies that reduce ship emissions, work with truckers to ‘green’ their trucks, make the Port a lead agency in the Duwamish cleanup, and help reduce jet noise and emissions.

Protect and Expand Jobs

I’ll fight to preserve and create jobs at the Port and in the many Port-dependent businesses. I will focus on long term competitiveness and preserve Fisherman’s Terminal and our urban industrial areas to protect jobs.

I’m proudly endorsed by King County Democrats, Senator Maria Cantwell, Congressmen Jay Inslee and Adam Smith, over 35 current and former State Legislators, Rogelio Riojas of SEA MAR, Port Commissioner John Creighton, King County Labor Council, Seattle/King County Building and Construction Trades Council, environmental leaders and many, many others.

I ask for your vote.



Sandy Koppenol

16027 36th Avenue NE
Lake Forest Park, WA 98155
206-361-7129
www.sandykoppenol.com

Occupation: Lake Forest Park Councilmember, Pharmaceutical Scientist / Consultant, and Pharmacist

Education: Post-doctoral research, University of Washington • PhD/MS, University of Wisconsin • BS, Philadelphia College of Pharmacy

This race is about the quality of life in our city. I am focused on the future and am not constrained by 20 year-old ideas. I have looked at our City's present and future needs and we can responsibly meet them with today's tight budget.

I've fought for funding that maintains our public safety, roads, sidewalks, provides for our parks as well as Third Place Commons, our Farmers Market, after school youth programs, and the Senior Center.

My leadership has resulted in the: • Legacy Vision to sustain a livable and green community • Tree Ordinance to protect our valued assets including stream quality • Redevelopment of the BG trail for use by all • Greater accountability to our citizen commissions.

Join Representative Ruth Kagi, Mayor Dave Hutchinson, former Councilmember Roger Olstad and many other prominent citizens in voting for me--a proven leader for the future of our City.



Alan Kiest

18710 26th Avenue NE
Lake Forest Park, WA 98155
206-365-4731
www.alankiest.com

Occupation: administrator, King Eastside Community Services Office, DSHS

Education: BA, UPS; Master of Public Administration, Evans School, UW

Halt New Taxes - Resisted the efforts of some at City Hall to "fix" the budget by raising utility and property taxes.

Increase Parks - Supported the creation of each of the city's 28 acres of parks and the Legacy Task Force's proposal to acquire property for open space.

Protect Forest Canopy and Streams/Reduce Flooding - Supported the original Tree Ordinance and the Sensitive Areas Ordinance. And continue to work to protect our natural heritage and to seek environmentally sound solutions to flooding problems.

No Regional Jail - Instrumental in getting the City Council unanimously on record against locating a regional jail near LFP families.

With your support I will continue as your strongest INDEPENDENT voice at City Hall for preserving the quality of life in our neighborhoods. I will put my experience to work for you to ensure your government gives value to residents in return for your hard-earned tax dollars.

Council Position No. 3 (nonpartisan office • 4-year term)



Jean Thomas

3715 NE 180th Street
Lake Forest Park, WA 98155
206-363-9673
www.jeanthomaslfp.com

Occupation: Administrative Management and Technical Editor

Education: Attended Otterbein College and Boston University

The challenges facing our City require a leader with the skills, the professional experience, and a depth and breadth of knowledge about the issues. I am that leader, and I have earned the endorsement of dozens of local residents and organizations.

Fiscal responsibility must be balanced by the needs of our City's residents. We need greater protection of all of our natural resources, including protecting our aquifer from the impact of the Brightwater wastewater tunnel. Residents need clearer access to information and to know that their concerns are being heard and addressed.

As your next City Council Member, my extensive administrative and financial experience, plus my ability to "think outside the box," will produce much-needed results. To learn more — or to contact me — go to www.jeanthomaslfp.com.

Serving our City would be a tremendous honor. I ask for your support and your vote on November 3rd.



John Wright

15830 38th Avenue NE
Lake Forest Park, WA 98155
206-363-9927
JWright4LFP@live.com

Occupation: Resident Engineer, King County Department of Transportation (Metro Transit)

Education: UW Graduate, Volunteer LFP Transportation Commissioner, Member of LFP Legacy Task Force

The premier issue facing LFP is how the City will weather lean economic times and maintain essential services without raising taxes. The focus must be on efficient government in partnership with our citizens to best meet their needs.

Maintaining and improving Lake Forest Park's unique quality of life is vital, and the 100-year Legacy plan of 'green infrastructure' should guide our planning and future development.

Transportation is also a priority, and I will continue working to establish a Park & Ride within the city both to provide a transportation hub and reduce commuter parking problems.

I care deeply about the future of our City and I'll work to ensure that all of our citizen's rights are valued and respected. Lake Forest Park is a small city of great possibilities, and if you agree I'd appreciate your support!

66 City of Lake Forest Park Council Position No. 5 (nonpartisan office • 4-year term)



Don Fiene

4014 NE 178th Street
Lake Forest Park, WA 98155
206-898-3648
www.donfiene.com

As a Lake Forest Park City Councilmember for the last four years, I've demonstrated leadership by bringing people with divergent views together to resolve sensitive issues including solving flooding problems within the City, preserving our green infrastructure, developing the 100 Year Vision for our City's future, creating the plan for our Lake Washington shoreline, as well as representing LFP's interests on regional organizations dealing with transportation and salmon habitat protection.

I've worked on improving safety around our school zones, creating more sidewalks and connecting trails. I am working across jurisdictional lines to improve water quality and reduce downstream flooding. I am an advocate for a feasible solution to preserve the Cedarbrook property as an active park and believe there are better locations for the proposed jail than the Aldercrest site.

In today's tough economic times, I see opportunities to improve the City's financial stability by Transit Oriented Development.

Council Position No. 7 (nonpartisan office • 4-year term)



Robert E. (Bob) Lee

15823 35th Avenue NE
Lake Forest Park, WA 98155
206-363-1211
drrlee@comcast.net

Occupation: Retired from UW; Instructor at Seattle Central Community College

Education: Ph.D. in geography and education; post-graduate at Harvard University

Since 2003, I have dedicated myself to community service and consensus building in Lake Forest Park, serving as co-chair of The Legacy 100-Year Vision – a plan that will guide growth and preservation of our unique community resources. I currently chair our City's Planning Commission and the Legacy Advisory Committee.

I've worked to retain the special "small town" feeling and "quality of life" residents' treasure. To continue this, we must insure transparency and stress fiscal responsibility while supporting public safety, emergency preparedness, critical senior and youth services, surface water management, environmental education and the preservation of parks and open space.

With experience in teaching, online instruction, small business ownership, and city planning, I will work to ensure consensus in the City Council — balancing budgets, increasing appropriate economic development, encouraging home businesses, and preserving our natural environment.

With your support, we can build on today, and open doors for future opportunities.



Tom French

Lake Forest Park, WA 98155
206-898-8783
www.electtomfrench.com

Occupation: Strategic Management Consultant

Education: BA, Eckerd College; LFP Shoreline Program Chair; Burke Gilman Advisory Group; LFP Financial Task Force

As a more than 42-year resident of our community, I have a unique perspective on Lake Forest Park.

I believe in **protecting the character of our neighborhoods**, maintaining our **sense of community** and preserving our city for future generations as one where families and seniors want to live.

As a business leader, I am committed to increased efficiencies in our government and preserving city services **without raising taxes**.

I greatly value the natural environment of our city and I applaud the 100-year Legacy Plan's elements that are proper and **affordable** in the near term.

Practical transportation is essential to our city, as is the development of a Park and Ride, and improved pedestrian access and safety throughout our city.

I bring a **fiscally responsible**, pragmatic approach to the City Council. My voice is a balanced one and I will always listen carefully to the citizens of Lake Forest Park.



Seattle is a Charter City that has a Mayor/Council form of government. The Mayor, the City Attorney, and City Councilmembers are full-time, nonpartisan, elected officials, who are elected to four-year terms. Together the Mayor and Council are responsible for the conduct of City government. Elections for these positions are held in odd-numbered years.

CITY OF SEATTLE MAYOR

The Mayor of Seattle is the chief executive officer of the City and is charged with the enforcement of City and state law, of City contracts, and the maintenance of order. The Mayor directs and controls all subordinate officers of the City, unless otherwise provided for by the City Charter.

Departments in the City of Seattle include two major utilities, Seattle Public Utilities and Seattle City Light; administrative departments, such as the Department of Finance and the Department of Fleets and Facilities; public safety departments, such as the Police and Fire Departments; and social service providers, such as the Department of Housing and the Department of Human Services. All of these operate under the Mayor's direction and control. In addition, the Mayor's office is responsible for applying for federal funds and preparing the entire City budget.

The Mayor appoints, subject to the approval of the City Council, most of the heads of departments. He or she also appoints some of the members of several boards and commissions. The Mayor has the authority to veto ordinances passed by the City Council, but the Council may override such vetoes by a two-thirds majority vote.

The City Charter provides that the Mayor must be a United States citizen and registered to vote in the City of Seattle.

SEATTLE CITY ATTORNEY

The City Attorney is the City's corporation counsel. He or she is the head of the Law Department, and appoints all of the Assistant City Attorneys, City Prosecutors, and other department staff. The City Attorney supervises and controls the litigation of the City, and any litigation in which the City or any of its departments are interested. He or she provides legal counsel to all City departments, and appointed and elected officials.

The City Charter provides that the City Attorney must be licensed to practice law in the State of Washington, and have been in the practice of law in the City of Seattle for at least four years before the election.

SEATTLE CITY COUNCIL

The Seattle City Council is the City's elected legislature. The nine members determine City policy through the enactment of ordinances and the adoption of resolutions. The Council authorizes public improvements and expenditures, provides for public safety and health, adopts regulations, levies taxes, controls the finances and property of the City and performs many related legislative tasks. All ordinances enacted by the Council are subject to Mayoral veto, which may be overridden by a vote of six councilmembers.

The City Charter provides that City councilmembers must be United States citizens and registered to vote in the City of Seattle. In 2009, positions 2, 4, 6 and 8 are on the ballot.

WORKING FOR A CANDIDATE OR BALLOT ISSUE

If you are interested in working on a City candidate or ballot issue campaign, please call the SEEC at 206-684-8500 or visit our web site at www.seattle.gov/elections for campaign contact information.

MAKING CAMPAIGN CONTRIBUTIONS

The following City and State regulations apply to campaign contributions for City candidate and City ballot issue committees:

- Committees must report the receipt of both monetary and in-kind contributions.
- Candidate committees have a contribution limit of \$700 per contributor per election cycle. Ballot issue committees do not have contribution limits except during the final 21 days before the election, when they may not accept contributions of more than \$5,000 from any one contributor.
- Individuals who contribute more than \$100 to a committee are required to disclose their occupation, the name of their employer, and the city and state where they are employed.
- Committees may not accept cash contributions of more than \$60. Contributions of more than \$60 in the aggregate must be made by check, money order, or credit card.

Official Ballot Title

City of Seattle**Proposition No. 1****Low-Income Housing Levy**

The City of Seattle's Proposition 1 concerns a seven-year property-tax increase for low-income housing assistance.

This proposition would fund affordable housing and other housing needs of low-income households. It authorizes collection of regular property taxes above limits otherwise allowed by state law. It allows \$145,000,000 in additional taxes over seven years beginning in 2010, limited to \$20,714,286 annually. In 2010, the increase would be up to \$0.17 per \$1,000 of assessed value. The City's total regular property-tax rate would not exceed the state law limit of \$3.60 per \$1,000 of assessed value.

Should this housing levy be approved?

Yes

No

Statement for**VOTE YES! HELP SENIORS AND THE MOST VULNERABLE**

Since 1981, Seattle voters have provided housing for the most vulnerable in our city through the Housing Levy: low-income families, **SENIORS**, victims of domestic violence and people who are **DISABLED** or homeless. These apartments are guaranteed to be affordable for at least 50 years, helping tens of thousands of families and individuals.

NOW MORE THAN EVER: VOTE YES! TO RENEW THE HOUSING LEVY

In a time of economic insecurity, our investment in affordable housing is critical. The Housing Levy keeps people in their homes who have lost their job or suffered other life emergencies. Levy-funded housing connects people to job training, counseling and other services to get their lives back on track.

SEATTLE HOUSING LEVY: EXCEEDING GOALS

The current Housing Levy, passed by voters in 2002, exceeded its goals. The funding you supported preserved and constructed nearly 2000 apartments and helped over 4000 families with emergency rental assistance.

LEVERAGING INVESTMENTS, CREATING FAMILY WAGE JOBS

For every Housing Levy dollar, more than \$3.00 are matched from other sources like foundations, banks, state and federal governments—stretching dollars to help more people. This money is invested in our neighborhoods by rehabbing apartment buildings and constructing new housing that meets green standards.

VOTE YES! FOR A PROVEN SUCCESS

Seattle voters have consistently supported past housing levies, and this year it is perhaps the most important vote we will take. In a time of economic insecurity, more of our neighbors are vulnerable and our investment in affordable housing is critical. The \$145 million proposal will cost the

City Attorney's Explanatory Statement

Proposition Number 1 would authorize a seven-year property tax increase to finance low-income housing, and otherwise provide for the housing needs of low-income households. The proposition defines low-income households based on guidelines published by the United States Department of Housing and Urban Development. Most programs funded by the proposed levy serve households earning less than \$17,700 for a single person and \$20,250 for a family of two, or 30 percent of Seattle area median income.

Some form of housing levy has been in effect since 1981. The last housing levy passed in 2002 and expires this year. If approved, Proposition Number 1 would increase taxes levied in 2009 through 2015 and collected in 2010 through 2016. It would authorize Seattle to raise up to \$145 million in additional property taxes over the seven-year period to pay for levy programs. The City could levy no more than \$20,714,286 in additional taxes each year.

Proposition 1 includes a list of anticipated levy programs. These are:

- **Rental Production and Preservation.** The City anticipates spending \$104 million to construct or preserve an estimated 1670 affordable rental housing units. At least 60 percent of the program funding would be reserved for households at or below 30 percent of area median income. In 2009, 30 percent of area median income for a family of two is approximately

typical Seattle homeowner \$5.50 per month, most of which we are already paying through the current Housing Levy.

Supported by: Senior Services, YWCA, Habitat for Humanity, Jubilee Women's Center, Urban League, King County Democrats, SEIU 1199 NW, UFCW Local 21, Downtown Seattle Association, Key Bank, Uwajimaya, Capitol Hill Chamber of Commerce, Cascade Land Conservancy, Mayor Nickels, former Mayors Charles Royer and Norman Rice, Mayoral Candidates Mallahan and McGinn, and all 9 City Council Members.

Vote YES on Proposition 1!

Rebuttal of statement against

The Housing Levy protects seniors, people who are disabled or homeless, victims of domestic violence, and vulnerable families--those most in need in a challenging economy.

Opponents are mistaken. Median home prices rose 73% between 2002 and 2008 and rents increased 21% since 2004 and have moderated only slightly. Despite the recession, the cost of housing outpaces income for many low-income working families, and fixed-income seniors.

Larger proposals were rejected to keep programs targeted and maintain the same goals as the current Housing Levy. No new staff positions are created by this levy. For \$2.00 more per month, the Housing Levy creates family-wage jobs, drives economic revitalization, and helps Seattle residents meet their basic housing needs.

Senior advocates, neighborhood leaders, unions, business leaders, and people across Seattle support the Housing Levy.

Vote Yes on Proposition 1.

Statement Submitted by: DENISE KLEIN, Senior Services; MICHAEL RAMOS, Church Council of Greater Seattle; JOHN LITTEL, Northwest Carpenters Union.

\$20,250. In addition, no more than 10 percent of program funding would be used for households earning 61 to 80 percent of area median income.

- **Operating and Maintenance.** The City anticipates spending \$14.4 million to assist an estimated 220 low-income households by providing support to owners of Levy-funded housing for 20 years. This program is aimed at residents whose incomes are at or below 30 percent of area median income.
- **Rental Assistance.** The City anticipates spending about \$4.2 million over seven years to provide rental assistance to an estimated 605 households each year. The program is intended to prevent eviction and homelessness, and help families earning no more than 50 percent of area median income. In 2009, 50 percent of area median income for a family of two is approximately \$33,700.
- **Homebuyer Assistance.** The City anticipates spending up to \$9.09 million to assist an estimated 180 first-time low-income homebuyers. Among other things, this program is intended to promote long-term housing affordability. This assistance would go to homebuyers earning less than 80 percent of area median income, which, for a family of two, is approximately \$51,200.
- **Acquisition and Opportunity Loans.** The City anticipates spending \$6.5 million for short-term loans to buy buildings or

land for housing developments for an estimated 175 low-income households. Levy funds not yet needed for other levy programs will be used. Because this is a loan, the City expects that the \$6.5 million will be repaid and that the money will be available for other levy programs.

- **Administration.** About \$13.3 million in levy funds will be spent on the administration of all programs except the Operation and Maintenance Program. The Operation and Maintenance Program administrative costs will be paid with interest earnings on the levy funds and other revenues.

The City Council described these anticipated programs in Ordinance number 123013. The City Council could change the programs, consistent with the basic purposes of the proposition. The Council could add or delete programs, or change the amount of money for any program.

Administrative and Financial Plans covering all levy programs would be periodically submitted to the City Council for its review. Each plan would include amounts allocated to programs, criteria for funding projects, guidelines for loans or grants, requirements for project sponsors, progress and performance reports, program reviews to ensure that levy funds are used for their stated purposes, and guidelines for use of program income and investment earnings. The City Council could also request that the

(continued on next page)

Statement against

A 68% middle-class tax increase during a recession? Who are they kidding?

“Administration” -- **OVERHEAD -- UP from \$4,258,000 to \$13,262,000? More than triple!** What's that going to do for the rest of us?

The 2002 Housing Levy took \$86,000,000. This one would take \$145,000,000 -- a **68.6% Tax Increase, in seven years!** That's not about inflation, which was more like 2% per year. It's the relentless increase in property taxes, even while our incomes and home values fall.

There's an "Oversight Committee" in the ordinance, Section 9. It encourages conflicts of interest -- employees of the businesses which will receive levy money are welcome on the committee. That isn't oversight -- it's a cartel. And you can bet that the donors to the pro-levy campaign will select their employees -- they're on the current committee now, along with a guy from Washington Mutual.

The housing bubble is over. Rents and home prices are falling. Government departments are tightening their belts, getting by with less -- just like the rest of us. Even if you got a raise this year, your neighbors probably didn't -- especially if their money was in a 401(k).

City government is still awarding tax breaks for developers who set aside some "affordable" units. This isn't always very efficient, but at least it doesn't involve triple overhead!

This levy would do some good for some people, but it's too big an increase for a recession. This industry can get by on less than a 68% raise, and their bureaucrats don't need a Triple. Encourage the City Council to submit a smaller levy -- vote NO on this fat one.

Rebuttal of statement for

We can't afford endless property tax increases, especially in the worst recession in 70 years.

Check the Bureau of Labor Statistics' Inflation Calculator:

http://www.bls.gov/data/inflation_calculator.htm

\$86,000,000 in 2002 (the current Housing Levy amount) is the equivalent of less than \$103,000,000 today. That's a **\$42,000,000 tax increase**, AFTER inflation!

The proponents' campaign is funded by the same levy recipients who will dominate the **sham "Oversight Committee"** -- the agencies and their employees, government employees, and bailed-out banks. (We are not accepting ANY campaign contributions!)

A NO vote won't end all these government programs, but it WILL persuade the City Council and the new Mayor to offer a reasonable renewal, without **tripled overhead**. It should also tell them to **restrain themselves** when they adopt their next budget and submit their future annual tax increase referenda.

Statement Submitted by: KIRK ROBBINS, Queen Anne Community Organizer, homeowner and taxpayer; DORIS BURNS, Montlake Senior Citizen, homeowner and taxpayer; ANTONY LEO, Ballard Environmental Specialist, homeowner and taxpayer.

City Attorney's Explanatory Statement (continued)

Plans include other information. Upon review, the Council could approve or modify the Plans.

The proposition also would create an oversight committee to monitor and report on the progress of the levy programs. The committee would report on levy program accomplishments and problems. It would also make recommendations on the Administrative and Financial Plans and on actions to be taken, including additions or deletions of programs or amounts of money allocated to programs. Committee members would serve without compensation.

Proposition 1 would authorize the collection of more property taxes than would otherwise be allowed by the limits imposed under RCW 84.55. That state law generally limits the increase in property tax revenue to one percent over the highest amount that the City could have received in the prior year.

The taxes authorized by Proposition 1 would be in addition to the maximum regular property taxes to which the City would have been limited under state law without the proposition, plus any other authorized levy lid lifts. In the first year of collection (2010), the additional tax rate associated with the tax increase authorized by Proposition 1 for any property owner would be approximately 17 cents per thousand dollars of assessed value. The City's total regular property-tax rate would not exceed the state law limit of \$3.60 per \$1,000 of assessed value. Taxes levied in 2016 for collection in 2017, and later tax levies, would be calculated as if Proposition 1 had not been passed.

Ordinance Number 123013, which placed Proposition 1 on the ballot, is reprinted in full in this voters' pamphlet.

City of Seattle Proposition No. 1
 Ordinance 123013

AN ORDINANCE relating to low-income housing; requesting that a special election be held concurrent with the November 2009 general election for submission to the qualified electors of the City of a proposition to lift the limit on regular property taxes under Chapter 84.55 RCW in order to authorize the City to levy additional taxes for low-income housing for up to seven (7) years; providing for interim financing pending tax receipts; creating a levy oversight committee; providing for implementation of programs with funds derived from the taxes authorized; and ratifying and confirming certain prior acts.

WHEREAS, the \$86,000,000 housing levy authorized in Ordinance 120823 and approved by the voters in 2002 (the "2002 Levy") expires with the collection of 2009 property taxes; and

WHEREAS, the 2002 levy had a production goal of 1,718 rental units, and as of December 2008 the City has approved 2002 Levy funding for the production or preservation of 1,814 rental units, as well as assisted 211 first-time homebuyers and 4,146 renter households at risk of homelessness; and

WHEREAS, the \$59,211,000 housing levy authorized in Ordinance 117711 and approved by the voters in 1995 had a production goal of 1,360 units, and over 2,632 units were actually produced or preserved by leveraging other funds; and

WHEREAS, the \$49,975,000 housing levy authorized in Ordinance 112904 and approved by the voters in 1986 had a production goal of 1,000 units, and over 1,800 units were actually produced or preserved by leveraging other funds; and

WHEREAS, the \$48,178,000 low-income elderly and handicapped housing bond issue authorized in Ordinance 110124 and approved by the voters in 1981 had a production goal of 1,000 units, and 1,198 units were actually produced or preserved; and

WHEREAS, substantial need remains for additional low-income housing and assistance to help low-income persons access housing they can afford, as documented in the Housing Appendix to the Comprehensive Plan and the City's 2009-2012 Consolidated Plan; and

WHEREAS, Chapter 84.55 RCW generally limits the dollar amount of regular property taxes that a city may levy in any year, but RCW 84.55.050 allows a city to levy taxes exceeding such limit by majority approval of the voters, and allows a city to include in the ballot proposition a limit on the purpose for which the additional taxes levied will be used and to provide for the expiration of the additional taxing authority; and

WHEREAS, RCW 35.21.685 authorizes a city to assist in the development or preservation of publicly or privately owned housing for persons of low income by providing loans or grants of general municipal funds to the owners or developers of the housing, including loans or grants to finance the acquisition, construction or rehabilitation of low-income housing;

NOW THEREFORE,

BE IT ORDAINED BY THE CITY OF SEATTLE AS FOLLOWS:

Section 1. Findings. The City Council makes the following findings and declares as follows:

A. The City of Seattle has insufficient safe, sanitary, and decent housing affordable to low-income households to meet the present and anticipated needs of such households, as documented in the Housing Appendix to the Comprehensive Plan and the City's 2009-2012 Consolidated Plan.

B. Affordable rental housing for low-income households, including the homeless, other persons with special needs, families and seniors, often requires a commitment of City funds for development or preservation, or other forms of assistance.

C. Promoting home ownership through loans to low-income first-time homebuyers, coupled with homeownership counseling, helps create financial stability for families and mixed income neighborhoods.

D. Providing funding for acquisition or preservation of buildings or property for low-income housing is critical to take advantage of current housing market conditions.

E. Providing funding to help develop, preserve and finance housing affordable to low-income renters and homebuyers helps create jobs and generate significant income received by construction workers and local business owners.

F. The additional taxes to be levied under this ordinance will enable the City to provide for the housing needs of low-income households and thereby to fulfill the purposes of federal, State, County and City laws and policies, including without limitation the federal HOME Investment Partnerships Act, the State Growth Management Act ("GMA"), the Countywide Policies adopted under GMA, and the City's Comprehensive Plan.

Section 2. Definitions. The following terms used in this ordinance shall have the definitions stated below unless the context otherwise clearly requires:

"Low-income housing" means housing that will serve "low-income households."

"Household" means a single person, family or unrelated persons living together.

"Low-income household" means a household with income less than or equal to eighty percent (80%) of median income.

"Median income" means annual median family income for the statistical area or division thereof including Seattle for which median family income is published from time to time by the U.S. Department of Housing and Urban Development, or successor agency, with adjustments according to household size in a manner determined by the Director of Housing, provided that if an Administrative and Financial Plan adopted under Section 6 of this ordinance shall adopt a substitute definition of "median income,"

the substitute definition shall apply.

To the extent permitted by applicable State law, income determinations may take into account such exclusions, adjustments and rules of computation as may be prescribed or used under federal housing laws, regulations or policies for purposes of establishing income limits, or as may be established in City planning documents consistent with federal laws, regulations or policies.

Section 3. Proposition to Authorize Levy of Additional Regular Property Taxes.

The City submits to the qualified electors of the City a proposition as authorized by RCW 84.55.050(1), to exceed the levy limitation on regular property taxes contained in RCW Chapter 84.55 for property taxes levied in 2009 through 2015 for collection in 2010 through 2016, respectively, raising up to \$145,000,000 in aggregate over a period of up to seven years. The proposition shall be limited so that the City shall not levy more than \$20,714,286 in additional taxes each year. All the levy proceeds shall be used for the purposes specified in Section 5.A. of this ordinance. The taxes authorized by this proposition will be in addition to the maximum amount of regular property taxes the City would have been limited to by RCW 84.55.010 in the absence of voter approval under this ordinance, plus other authorized lid lifts. If the voters approve the proposition submitted by this ordinance, the maximum total dollar rate for City of Seattle regular property taxes for collection in 2010 shall be a total maximum of \$ 3.60 per thousand dollars of assessed valuation. The dollar amount of the City's levy of regular property taxes in 2009 for collection in 2010, including the increase authorized under this section, shall be used for the purpose of computing the limitations for subsequent levies provided for in RCW Chapter 84.55, through and including the levy of taxes in 2015 for collection in 2016. Pursuant to RCW 84.55.050(5), the maximum regular property taxes that may be levied in 2016 for collection in 2017 and in later years shall be computed as if the limit on regular property taxes had not been increased under this ordinance.

Section 4. Levy Revenues.

A. Unless otherwise directed by ordinance, all revenues collected from the additional taxes authorized pursuant to this ordinance shall be deposited in the Low-Income Housing Fund to be used to finance housing for low-income households and otherwise to provide for the housing needs of such households. The Director of Executive Administration is authorized to create other subfunds or accounts within the Low-Income Housing Fund as may be needed or appropriate to implement the purposes of this ordinance.

B. Pending expenditure for the purposes authorized in this ordinance, amounts deposited in the Low-Income Housing Fund pursuant to this ordinance may be invested in any investments permitted by applicable law. All investment earnings on the balances shall be deposited into the Low-Income Housing Fund. Amounts received by the City from payments with respect to loans, recovery of grants, insurance proceeds or proceeds of sale or disposition of property ("program income") shall be deposited into the Low-Income Housing Fund unless otherwise specified by ordinance. The Director of Housing shall use any investment earnings and program income derived from revenues collected from the additional taxes authorized pursuant to this ordinance consistent with the provisions of any Administrative and Financial Plan ("A & F Plan") adopted by the City Council under Section 6 of this ordinance.

Section 5. Administration; Use of Proceeds.

A. The levy funds shall be used to finance affordable housing for low-income households, and otherwise to provide for the housing needs of low-income households.

B. The City Office of Housing, or such other department as may be designated by ordinance, shall administer programs funded with the additional taxes authorized pursuant to this ordinance. Programs adopted by the City Council for use of the funds derived under this ordinance shall be referred to as "Levy Programs." Levy Programs shall be implemented consistent with Administrative and Financial Plans, adopted by the City Council under Section 6 of this ordinance.

C. Anticipated Levy Programs are shown in Exhibit 1, attached hereto. The City Council, upon recommendation of the Oversight Committee described in Section 9 of this ordinance, or upon recommendation of the Mayor, or on its own motion, may review the timing of the allocations to particular Levy Programs and make changes to the programs, including additions and deletions of programs and/or in the amount of funds allocated to any program, consistent with the basic purposes of this ordinance and applicable law. Administration funding shown on Exhibit 1 is intended to be used for administration of the use of levy proceeds for all programs except the Operating and Maintenance Program. Administration funding for the Operating and Maintenance Program, for the monitoring of funded projects over their lives, and for any use of loan repayments, may come from investment earnings or program income.

Section 6. Administrative and Financial Plans.

A. Every two years, or at such other intervals as the City Council may specify, the Director of Housing, or other department head as may be designated by the Mayor, shall prepare an A & F Plan covering all of the Levy Programs. Such plans shall cover periods commencing in 2010 and continuing through 2016, and thereafter if so specified by the City Council.

B. Unless otherwise requested by the City Council, each A & F Plan shall include: amounts allocated to programs, which may vary from year to year in order to respond to changing housing market conditions, leveraging opportunities or other circumstances; criteria for evaluating and selecting projects; guidelines for loans or grants, including any fees to be collected to defray costs; requirements for project sponsors; progress and performance reports on ongoing projects and for each Levy Program; program reviews to ensure that levy funds are used for their stated purposes; and guidelines for use of program income and investment earnings. An A & F Plan may include such other information as the Mayor or Director of Housing may deem appropriate or the City Council may request.

C. The A & F Plan shall be submitted to the City Council for its approval, with such modifications as the City Council may require. For purposes of future updates of the A & F Plan, all criteria, guidelines, and requirements contained in a previously approved A & F Plan shall remain in effect pending approval by City Council of a new A & F Plan, unless otherwise provided by ordinance.

Section 7. Appropriations and Funding Approvals. The City Council shall appropriate from the Low-Income Housing Fund, as part of the City budget or supplementally, such monies derived from the levies authorized in this ordinance as it deems necessary to carry out the Levy Programs. The Director of Housing or other department head as may be designated by the Mayor or City Council, or the designee of such director (any such director or designee is hereinafter referred to as "Director"), is authorized, for and on behalf of the City, to select projects for funding and to approve, make and modify loans, grants or other expenditures to carry out the Levy Programs, provided that such authority is subject to the appropriation of sufficient funds. The Director and his or her designees are further authorized, for and on behalf of the City, to execute and deliver such documents and instruments as he or she may determine to be necessary or appropriate to implement the financing of specific projects or to otherwise carry out the Levy Programs.

Section 8. Bonds and Notes. To the extent permitted by applicable law the City may issue bonds, notes or other evidences of indebtedness payable wholly or in part from the proceeds of the additional taxes authorized under this ordinance, and apply such tax proceeds to the payment of principal of, interest on, and premium (if any) on such bonds, notes or other evidences of indebtedness and to the payment of costs associated with them.

Section 9. Oversight Committee.

A. Conditioned upon voter approval of the ballot proposition submitted by this ordinance, there is established an Oversight Committee for the purpose of monitoring the progress of Levy Programs and reporting to the Mayor and City Council on the progress of Levy Programs. The Committee shall inform the Mayor and the City Council of Levy Program accomplishments and problems and make recommendations on the A & F Plans and on actions to be taken, including additions to or deletions of programs or amounts of funds allocated to the several programs, so that Levy Programs may be conducted in a timely and efficient manner. The Committee may elect officers and establish rules of procedure, including rules establishing what shall constitute a quorum. The Director of Housing or such other department head as may be designated by the Mayor shall provide the Committee such information as is necessary for the Committee to determine the status of individual programs and projects. The Oversight Committee shall consist of thirteen (13) voting members, selected as follows: one (1) shall be a City employee appointed by the Mayor or his designee; one (1) shall be a City employee appointed by the City Council; the remainder shall be persons outside City government, of whom six (6) shall be appointed by the Mayor, and five (5) by the City Council. The appointing authority shall remove any member who is absent from two or more consecutive meetings without cause. The appointing authority may remove any member for other good cause shown or to ensure compliance with subsection B of this section.

B. At all times no more than three (3) Committee members appointed by the Mayor and no more than two (2) Committee members appointed by the City Council shall be an officer, director, board member, trustee, partner or employee of an entity that receives or competes for funding under this ordinance; or be a member of the immediate family of, or an individual residing with, an officer, director, board member, trustee, partner or employee of an entity that receives or competes for funding under this ordinance; or be a person seeking or having an arrangement concerning future employment with an entity that receives or competes for funding under this ordinance. For the purposes of this ordinance an individual's "immediate family" means his or her spouse, domestic partner, child, child of a spouse or domestic partner, brother-in-law, sister-in-law, parent, parent of a spouse or domestic partner, a person for whom the individual acts as a guardian, or a person claimed as a dependent on the individual's most recent federal income tax return. Subject to the preceding sentence and applicable law, an individual serving as an officer, director, board member, trustee, partner or employee of an entity that receives or competes for funding under this ordinance, or who has an interest in such an entity, shall not thereby be disqualified from serving on the Committee, but shall fully disclose any such relationships and shall not vote on any matter in which the interest of such entity is directly involved. For purposes of this section, "entity" does not include a City department or office.

C. Upon the resignation, retirement, death, incapacity or removal of a Committee member, the authority appointing such member may appoint a replacement for the balance of the term. Committee members shall serve without compensation.

D. The City Council shall prescribe by ordinance or resolution the terms of office of Committee members, which

may be staggered to provide continuity, and the initial committee members shall be selected within six months after voter approval of the proposition submitted by this ordinance. The City Council may prescribe such other rules relating to the operation of the Committee as shall be necessary or appropriate.

E. The Oversight Committee shall continue in existence through 2016, and thereafter if so provided by ordinance.

Section 10. Election - Ballot Title. The City Council directs that the City Clerk file this ordinance with the Director of Elections of King County, Washington, as ex officio supervisor of elections, requesting that the Director of Elections call and conduct a special election in the City in conjunction with the state general election to be held on November 3, 2009, for the purpose of submitting to the qualified electors of the City the proposition set forth in this ordinance. The City Clerk is directed to certify to the King County Director of Elections the ballot title approved by the City Attorney in accordance with his responsibilities under RCW 29A.26.071. The following ballot title is submitted to the City Attorney for his consideration:

Seattle's Proposition 1 concerns increased property taxes for 7 years for low-income housing assistance.

This proposition would fund affordable housing and provide for other housing needs of low-income households, as provided in Ordinance XXX. It would authorize collection of regular property taxes above RCW 84.55 limitations. This proposition allows \$145,000,000 in additional taxes over seven years beginning in 2010, limited to \$20,714,286 annually. The 2010 regular tax rate would be limited to \$3.60 per \$1,000 assessed value, including about \$.17 in additional taxes.

Should this levy lid lift be approved?

Yes

No

Those in favor shall vote "Yes"; those opposed shall mark their ballots "No".

Section 11. Severability. If any one or more provisions of this ordinance shall for any reason be held invalid, such invalidity shall not affect any other provision of this ordinance or the levy of additional taxes authorized, but this ordinance shall be construed and enforced as if such invalid provisions had not been contained herein, except that if any provision shall be held invalid by reason of its extent or the range of persons eligible to benefit therefrom, then such provision shall be deemed to be in effect to the extent permitted by law and to benefit only such class of persons as may lawfully be granted the benefit thereof.

Section 12. Ratification. The City Clerk's certification to the King County Director of Elections of the proposition referred to in Section 10 and any other acts taken after the passage of this ordinance and consistent with its authority, are ratified and confirmed.

Section 13. Effectiveness. Those portions of this ordinance providing for the submission of a ballot proposition to the voters shall take effect and be in force immediately upon the approval by the Mayor; or if returned to the Council by the Mayor unsigned, then immediately upon its return; or if not approved and returned by the Mayor within 10 days after presentation, then on the 11th day after its presentation to the Mayor; or if vetoed by the Mayor, then immediately after its passage over his veto. All provisions of this ordinance that have not taken effect on an earlier date shall take effect and be in force thirty (30) days from and after the Mayor's approval of this ordinance, but if this ordinance shall not be approved and returned by the Mayor within ten (10) days after presentation, such provisions shall take effect as provided by Municipal Code Section 1.04.020.

Passed by the City Council the 15th day of June, 2009, and signed by me in open session in authentication of its passage this 15th day of June, 2009.

**EXHIBIT 1
2009 HOUSING LEVY PROGRAMS**

Program	Total Funding (7 Years)	Estimated Housing Produced/ Households Assisted	Program Description / Affordability Levels
Rental Production and Preservation	\$104,000,000	1,670	<ul style="list-style-type: none"> • Affordable rental housing for low-income households, including people with disabilities, the elderly, homeless, working families, and families with children • At least 60% of program funding for housing serving households at or below 30% of area median income • No more than 10% of program funding for housing serving households with incomes of 61% -80% of area median income.
Operating and Maintenance (O&M)	\$14,400,000	220	<ul style="list-style-type: none"> • Building operating support provided to owners of Levy-funded housing for 20 years, supplementing rent for residents at or below 30% of area median income
Rental Assistance	\$4,248,000	605 households each year	<ul style="list-style-type: none"> • Assistance to families and individuals up to 50% of area median income to help preserve their housing, preventing eviction and homelessness
Acquisition and Opportunity (A&O) Loans	\$6,500,000 <i>Not included in \$145 million total.</i>	175	<ul style="list-style-type: none"> • Short-term acquisition loans for strategic purchases of buildings or land for rental or homeownership housing development that will serve low-income households • Loans made with funds that are not yet needed for other levy programs
Homebuyer Assistance	\$9,090,000	180	<ul style="list-style-type: none"> • Assistance to first-time homebuyers with incomes at or below 80% of area median income including program models that promote the long term affordability of the housing produced.
Administration	\$13,262,000	N/A	
TOTALS	\$145,000,000¹	1,850 housing units and 3420 households	<ul style="list-style-type: none"> • Housing units funded by Rental Production and Preservation and Homebuyer Assistance programs. • Households assisted by Rental Assistance, Operating & Maintenance, and Acquisition & Opportunity Loan funds.

Exhibit 1: Housing Levy Programs

¹\$145 million total does not include \$6.5 million for Acquisition and Opportunity Loans because these are intended as only short-term uses of funds, and repayments are included in the amounts shown for other levy programs.

74 City of Seattle Mayor (nonpartisan office • 4-year term)



Mike McGinn

McGinn for Mayor
PO Box 70643
Seattle, WA 98127
206-501-4275
McGinnformayor.com
Info@mcginnformayor.com

I'm running for mayor because I've seen what can happen when people come together around common goals. Here's my story:

After graduating from UW law school, I joined a Seattle law firm and made partner. My wife and I loved our Greenwood neighborhood, but we worried about our children's safety because we had no sidewalks. City officials didn't seem to care about our concerns, so I worked with my neighbors to organize our community and get sidewalks built. Buoyed by our success, we worked to revitalize our local business district.

Talking to people in other neighborhoods, I realized we weren't alone in our frustration with the lack of progress. I decided to leave the law firm to form a non-profit - the Seattle Great City Initiative - to bring people together, find common ground, and get results.

We've had success. We delivered neighborhood improvements and passed the 2008 Parks Levy.



Joe Mallahan

Mallahan for Mayor
PO Box 9100
Seattle, WA 98109
206-313-6839
www.joemallahan.com
info@joemallahan.com

Let's make Seattle an even better place to live.

These tough economic times call for smart fiscal policy and experienced, effective management. I have a proven track record of successful management and executive experience to deliver major projects on time and on budget, grow our economy, create jobs and keep moving our city forward. Together, we can make Seattle an even better city to live, work and play.

I have the progressive vision, leadership skills, and management experience to move Seattle forward.

I was born and raised in the Pacific Northwest, and my wife and I are raising our family in the Wallingford neighborhood in Seattle. Currently, I am Vice President of Operations Strategy at an international communications carrier, where I help the company thrive by fostering innovation and driving efficiencies.

I want to bring this cooperative approach to the mayor's office. Here are my priorities:

Transportation - As a Sierra Club leader, I worked for great transit. Now we need to connect Seattle neighborhoods to the new light rail line - with new mass transit on dedicated rights of way that won't get stuck in traffic. You vote for it. We'll build it.

Education - Schools need our help. As mayor, city government will become a partner with the school system - sharing resources and reducing overhead.

Jobs and Economy - President Roosevelt created the CCC. Seattle can learn from history. We need a jobs program to put people to work on things like weatherizing homes, building sidewalks, and improving parks. We need to take care of our local streets and bridges and invest in the next generation of infrastructure - fiber optic Internet to make us competitive and reduce the digital divide.

Finally, **I am against the \$4.2 billion waterfront tunnel.** It's a bad deal and threatens all our other priorities:

- 1) It's the largest tax increase in city history - putting Seattle under mountains of debt for decades.
- 2) State law holds Seattle taxpayers responsible for ALL cost overruns.
- 3) It has no on-ramps or off-ramps downtown and no dedicated transit component.
- 4) Includes \$400 million in new tolls - about \$6.00 each way.

Go to my website for additional policy proposals and to share your ideas and feedback.

If we work together, Seattle wins. I'd appreciate your vote.

The Mallahan Plan

In good times and bad, we should have confidence that our city government is using our tax dollars judiciously and in a way that matches our values and priorities. That begins with a mayor who is a proven, effective manager who solves problems, makes difficult decisions, and listens to the people.

I will work with the City Council, neighborhood organizations, our regional partners, and most importantly, the people of Seattle, to create an open and accessible city government focused on Seattle's priorities and moving Seattle forward.

- **Transportation** - Provide real oversight and develop comprehensive traffic solutions to ease congestion.
- **Seniors** - Seattle shouldn't just be a great place to grow up but also a great place to grow old. I will work to increase senior services and better support senior centers.
- **Public safety** - Empower and work with neighborhood leadership to protect our community, give our police and first responders the resources they need and expand the gang unit to stop youth violence.
- **Grow Seattle's economy** - Work with small and large businesses alike to make Seattle a great place to do business and create jobs for our working families. Partner with our colleges and universities to create public/private partnerships to help develop small businesses.
- **Move Seattle forward** - Work with regional and federal partners to bring infrastructure investment projects to Seattle and execute those projects on time and on budget.

We can do better as a City. I believe you deserve better. Please join me in moving Seattle forward.

Thank you for voting **Joe Mallahan for Seattle Mayor.**



Pete Holmes

Pete Holmes for City Attorney
PO Box 28331
Seattle, WA 98118
206-529-4050
www.holmesforseattle.com
info@holmesforseattle.com

As your City Attorney, Pete Holmes will work to make Seattle government open, responsive and attentive to your priorities.

Endorsed by the Seattle Times, King County and local Democrats, GLBT leadership and advocates for open government and individual liberties, Pete Holmes is an effective advocate for the people of Seattle. Earning his B.A. at Yale and his J.D. at Virginia, Pete is a seasoned litigator with 25 years of legal expertise—24 in Seattle—in business, insolvency and environmental law. Pete combines diverse professional experience with a commitment to equality and justice, having chaired Seattle's first Office of Professional Accountability Review Board. Thanks to his leadership, last year 29 improvements were made to the Seattle Police Department's misconduct investigation system.

Pete will bring transparency, accountability and a spirit of public service to the City Attorney's Office.

No New Jail; Genuine Public Safety

Pete will work to avoid the shame of building a new jail while closing neighborhood schools, seeking alternatives to incarceration for nonviolent misdemeanors. He will fully support

mental health and community courts, and expand crime reduction programs like Clean Dreams. Pete will emphasize tough sentencing for real criminals—those who threaten our personal safety and property.

Sound Legal Counsel—Saving Money and Protecting Our Quality of Life

From loss of the Sonics to managing our First Responders, Seattle cannot afford misguided lawsuits. Environmental and labor rules require enforcement, while money-wasting nightclub “stings” expose taxpayers to civil liability. Seattle needs a City Attorney who understands legal strategy, risk management and the art of settlement.

The Right Priorities

As your City Attorney, Pete will be an advocate for the people of Seattle, not just City Hall. A proven leader committed to public service, Pete will make you—the citizen—his most important client.

The Seattle Times says Holmes has “excellent experience to become a city attorney — one sensitive to the people's rights as well as the needs of their government.”

The Broadest Support

King County and the 11th, 36th, 37th and 43rd LD Democrats; Metropolitan Democratic Club; State Senators Ed Murray and Ken Jacobsen; State Representatives Scott White, Mary Lou Dickerson, Eric Pettigrew, and Bob Hasegawa; City Councilmember Nick Licata and Peter Steinbrueck; IATSE Local 15 and IBEW Local 46.

The need for change doesn't stop in the Mayor's Office: Pete Holmes will bring reform and fresh focus to the City Attorney's Office, too!



Tom Carr

4701 SW Admiral Way, #172
Seattle, WA 98116
206-354-9966
www.tomcarrforcityattorney.com
tomcarrforcityattorney@comcast.net

During this time of change, Seattle needs an experienced, caring City Attorney with a vision for keeping you safe. Based on my record, the **Municipal League** has rated me as “**outstanding.**” The **Seattle Times** described me as “smart, aggressive, plainspoken, and a **bulldog in defense of the city.**” The Seattle Police Officers Guild, Washington Conservation Voters, the 34th District Democrats, prosecutors, former judges, and public defenders; private attorneys; local and state elected officials; and Labor have endorsed me.

I believe in law and order by holding offenders accountable, tempered with caring. I was raised with six family members in a one-bedroom apartment in the Bronx. My dad, a combat veteran, suffered from alcoholism and died in a fall, leaving my mom to raise four kids. From an early age, I saw homelessness, addiction, and crime and vowed to do something about it.

To protect you, I have:

-Taken a new approach to prosecuting repeat car thieves and, as a result, **car theft dropped by 60%** since 2005.

-Reduced the cycle of arrest and jail time for low-risk, repeat offenders by creating the nationally recognized Seattle Community Court **saving over \$1,000,000** in jail costs and **providing over 30,000 hours of community service** to your neighborhoods.

-Worked to avoid building a new jail through alternatives to putting people away and **reduced our jail population by almost 40%**.

-**Won over \$1,000,000 in federal grants** to pay for a community prosecutor in every precinct; expand Community Court citywide; drive justice system efficiencies; improve domestic violence prosecution, and deter street drug dealers.

-Partnered with public defenders, mental health treatment providers, and Municipal Court judges to manage low-risk mentally ill offenders in the community instead of in jail.

-Championed better laws for **walker, runner and bicycle safety.**

In the next four years, **I plan to** build on these successes by:

-**expanding the Drug Market Initiative** beyond the Central Area and into Southeast Seattle and other areas, while balancing zero tolerance for drug dealing with giving low level dealers the opportunity to change.

-**establishing a treatment court** to help defendants addicted to drugs or alcohol help themselves and the community.

-**building a family justice center** to provide a safe place for domestic violence victims to get help and protection.

With a new Mayor coming into office, a City Attorney with my experience and caring is vital to keeping you safe. Please vote for me, Tom Carr.

76 City of Seattle Council Position No. 2 (nonpartisan office • 4-year term)



Richard Conlin

People for Richard Conlin
206-954-2322
www.richardconlin.com
info@richardconlin.com

Rated “OUTSTANDING” by the Municipal League. Richard Conlin is an innovative neighborhood leader who puts his experience to work for all of Seattle. He listens and creates opportunities to get things done that make a difference in our lives. He works hard to ensure that Seattle makes effective decisions to protect and improve our communities and our environment. **Richard Conlin makes change happen.**

“Thank you for the honor of serving as your Councilmember. Tough times require experienced leadership and a fresh approach for our future. You can depend on me to do everything I can to bring economic health back to Seattle, take care of those who are left out and left behind, and move Seattle to a new and greener economy.

My work demonstrates that Seattle can make smart choices to have great neighborhoods and a thriving downtown, connected by transit, bicycle, and pedestrian ways and well maintained roads. **I have a record of accomplishment** -- initiating new programs to reduce waste, creating affordable housing, fighting hunger and supporting community gardens through my Local

Food Action Initiative, and keeping transportation improvements on track.

I share your commitment to our neighborhoods. We’ve worked together to make sure people all around Seattle have parks, community centers, libraries, and excellent fire and police services – and that you get value from every dollar the City spends.

My wife Sue Ann and I have lived in Madrona for 28 years. Our three children graduated from Seattle Public Schools. I ask for your vote, and pledge to continue working with you and for you to keep Seattle a place we are proud to call home.”

My priorities include:

- **Bring back Seattle’s economy, create jobs, and support local businesses.**
- **Work for effective human services, clean air and water, and alternatives to dependence on imported oil.**
- **Get light rail to Northgate, the airport, and the Eastside.**
- **Make government open and transparent.**
- **Replace the Alaskan Way Viaduct and SR520 Bridge before disaster happens.**
- **Require fiscal accountability on all projects.**

Endorsed By:

- **Sierra Club, Washington Conservation Voters, Cascade Bicycle Club**
- **Seattle Police Management Association**
- **King County Labor Council, SEIU, many other unions**
- **Recommended by the Alki Foundation (Chamber of Commerce)**
- **King County Democratic Party, all Democratic Legislative Districts voting to date**
- **Allied Arts**
- **Seattle-King County Association of Realtors**
- **Business, community, and human services leaders**



David Ginsberg

Friends of David Ginsberg
PO Box 9100
Seattle, WA 98109
206-979-8338
www.davidginsberg.org
info@davidginsberg.org

I am running for City Council to bring an effective, decisive and pragmatic approach to City Hall. The City Council has a reputation for advancing policies that have little to do with the “kitchen table” issues most families face in our city. Families and working Seattleites are hurting: our local economy isn’t creating jobs, our city is plagued by rising crime and we continue to idle in traffic. The current City Council does not have a vision to tackle these big issues, nor a plan to get us moving again.

My values are your progressive Seattle values. On the City Council, I will work for:

Economic Opportunity to make it through these tough times and lay the foundation in which our small businesses can thrive and grow the next great economy—one that will provide a better quality of life throughout the city.

Affordable, Safe Neighborhoods, because we must make sure Seattle continues to be a great place to live and raise our families. This means building enough housing stock to keep

prices affordable. It means creating safe, walkable communities with vibrant business districts. And it means protecting the character of our neighborhoods by involving our communities in the planning process from the start.

Transportation Solutions, because it’s time for Seattle to plan and build the infrastructure that will serve this city for the next century, with safe and reliable transportation options connecting our walkable communities to each other and to a strong and thriving downtown core. Unlike the debate on the viaduct replacement, I’ll make sure citizens are heard on transportation solutions to meet the needs of everyone.

I believe it’s time for the city to create a strategic plan to support small businesses and spur their growth. Having worked as a Solutions Architect for the last six years, I know how to deliver projects on time and within budget. I have a track record of cutting through the red tape and reducing costs.

I am a third generation Seattle native. My partner and I are raising twins adopted from a drug-addicted mother and we live in West Seattle’s green-built High Point neighborhood.

Endorsed by: King County Democrats, 11th District Democrats, 34th District Democrats, 37th District Democrats, ILWU Local 52, Senator Joe McDermott, Senator Ed Murray, Representative Sharon Nelson, Representative Marko Liias and Honorable Dawn Mason.

For a change, Vote **David Ginsberg** for Seattle City Council.



Sally Bagshaw

PO Box 21171
Seattle, WA 98111-3171
206-595-8525
www.sallybagshaw.com
info@sallybagshaw.com

Seattle needs a strong, proven leader who will unite people to solve problems. Sally Bagshaw is that leader, working and volunteering for three decades on issues that matter.

Sally is a former public school mom and small business advocate. She retired as Chief Civil Deputy in the King County Prosecutor's Office, where she led a division of nearly 100 lawyers and legal staff. Earlier in her career she was head of KC-Metro's Legal Department, served as Minority and Women's Business Officer for the University of Washington and worked as an Assistant Attorney General at both the UW and WSU.

Throughout her career, Sally has gotten results: she is the leader who advocates for innovative criminal justice programs, supports strong public schools, protects neighborhoods and parks, and works to end traffic gridlock.

Sally has earned broad support throughout the city because she listens. She will bring her record of positive management, dedication to her community and compassion for people to City Council.



David Bloom

Citizens for David Bloom
3822 42nd Avenue NE
Seattle, WA 98105
206-453-5626
www.bloomforcouncil.org
Info@bloomforcouncil.org

We have to make Seattle more affordable.

For too long, politicians in this city have ignored the will of the people with wrongheaded and costly projects:

- The most expensive option for replacing the viaduct, with huge possible cost overruns
- \$50 million for a street car for South Lake Union with few riders
- A \$300 million fix for Mercer Street without improving traffic flow
- A possible \$200 million for a new city jail while we are closing schools.

My priorities:

- Make a serious commitment to protecting and increasing our supply of affordable housing
- Develop a regional transportation plan that connects our neighborhoods with more bus routes
- Replace the expensive redo of Mercer and redirect our resources to rebuilding our neighborhood infrastructure

For a Stronger Economy...

Sally will help diversify and strengthen Seattle's economy, encouraging growing industries like biotechnology and clean energy. She will make the city a better partner with business and labor to protect and increase family wage jobs.

...Vital Neighborhoods...

A longtime neighborhood leader, Sally will promote diverse, affordable and well-designed neighborhoods to support our quality of life.

...Excellent Schools...

Sally will coordinate with the Seattle Public Schools to wisely use our resources. There's no excuse for overcrowding some schools while displacing kids from their neighborhoods.

...Parks and Open Space Protection...

Sally will follow through on city commitments to fund parks, protect streams and open spaces, and clean Puget Sound.

...Safe Streets...

Sally will push for more foot patrols to reduce crime, and work closely with former colleagues at the County to wisely use our public resources.

...Protecting the Vulnerable

Sally started an award-winning legal clinic in King County for homeless women. She will fight to maintain strong human services.

Endorsements!

Sally is rated **OUTSTANDING** by the Municipal League. She is endorsed by a broad range of organizations including Seattle Firefighters; Alki Foundation; Washington Conservation Voters; King County Labor Council; Allied Arts; Building and Construction Trades Council; Cascade Bicycle Club; Carpenters; Painters and Allied Trades; Plumbers and Pipefitters; Seattle Police Officers' Guild; Women's Political Caucus and more. Over 30 local elected officials endorse Sally. See the entire list at www.SallyBagshaw.com.

- Create a City initiative to increase living wage jobs
- Protect neighborhood trees, watersheds, and open space

I have worked for 30 years as a social justice advocate in Seattle to make sure all voices are heard. As Deputy Director of the Church Council of Greater Seattle, I led an urban program committed to building and preserving low-income housing, providing shelter for those who are homeless, working for social change, and advocating for human rights. I co-founded the Downtown Emergency Service Center, Common Ground, the Seattle Displacement Coalition, and the Interfaith Task Force on Homelessness. I have also served as an organizer and board member for Real Change. Recently, I have taken my experience to the classroom as adjunct faculty at Antioch University-Seattle, teaching courses on community organizing, homelessness, and spirituality & social action.

My endorsements:

The 11th, 36th, 37th, 43rd, and 46th District Democrats, The King County Democrats, Metropolitan Democratic Club, UFCW Local 21, SEIU Local 6, ILWU Local 52, I.A.T.S.E. Local 15, Inland Boatman's Union, SEAMEC, Seattle Gay News, Publicola, United African Public Affairs Committee of Washington State, King County Councilmember Larry Gossett, Seattle Councilmember Nick Licata, Former Councilmember Peter Steinbrueck, Former Seattle City Councilmember Dolores Sibonga, State House Speaker Frank Chopp, State Representatives Bob Hasegawa, Zack Hudgins, Eric Pettigrew, Sharon Tomiko Santos...and many others.

We have a progressive tradition in Seattle and strong sense of community in our neighborhoods. We need to keep that character alive and well in the 21st Century.

I will work with you to keep our progressive values, strengthen our neighborhoods, and refocus our priorities on essential city government services. I ask for your vote.

78 City of Seattle Council Position No. 6 (nonpartisan office • 4-year term)



Nick Licata

People with Nick Licata
2518 S Brandon Court
Seattle, WA 98108
www.nicklicata2009.com
votelicata09@gmail.com

Dear Voter,

With your support I look forward to working with a new Mayor and City Council. Some things will not change. I will continue as a **strong, effective, and tireless leader** with the **common sense** to ask questions before the bill comes due.

Seattle's citizens have come to **expect** that **perspective** and **vision** from me. I take my role as a legislator and representative of the people to heart. It is a job that I feel honored to do **working everyday in pursuit of the common good**.

My consistent record of promoting legislation that **benefits communities** throughout Seattle includes:

- Amending the Mayor's **public safety** budget to **add new police officers** for the first time since the late 1970's;
- Funding **critical transportation improvements** for the Spokane Street Project-ensuring West Seattle mobility when Alaskan Way Viaduct work begins;
- Developing a \$3 million **Strategic Pedestrian Safety Initiative** including \$1.5 million for new sidewalks and sidewalk repair;

But when public dollars are proposed for projects that make vague promises without clear evidence I will continue to ask the tough questions, and **get results**.

The Seattle Weekly says about my work on the council: "He's often the lone voice of dissent when his City Council colleagues are willing to sign off on questionable public policy."

Our city faces challenges and requires **creative and tested leadership** to resolve the many demands on limited resources. I will use my energy to ensure **true progressive public benefits**:

- **Better** public transportation through **more reliable bus** service
- Safer neighborhoods through more **foot and bike police** patrols, while speaking out to **protect civil rights**
- A **healthier more sustainable** environment -sidewalks, bike lanes, green building codes and community gardens
- Pursuing policies to help small **local business** thrive
- Providing more **affordable housing** for those most in need
- Promoting vibrant **cultural institutions**, libraries and community centers, major art institutions and neighborhood cultural districts.

My vision for a **prosperous and sustainable** Seattle has earned diverse endorsements - 15 of Seattle's state **legislators**, County Councilmembers Bob Ferguson and Larry Gossett, former **Governors** Mike Lowry and Albert Rosellini, **local unions** representing the Teamsters, Service Employees, Police, Transit Operators, and the sole endorsement of the **Sierra Club**.

I'd appreciate your vote too. Join me in making Seattle a city that grows with grace, respect and **fairness towards all**.

Sincerely,

Councilmember Nick Licata



Jessie Israel

PO Box 9100
Seattle, WA 98109
206-443-1990
www.jessieisrael.com
jess@jessieisrael.com

Jessie Israel – new ideas, new energy and a new approach to the problems facing our community

Issues of environmental protection, public safety, and transit loom large for Seattle. It has taken 40 years to complete the first phase of light rail. 40 years too long.

Yet with the clock ticking, our City Council has been bogged down in minutia, mired in process, and distracted by tangents -- banning circuses, opposing wars, establishing poet laureates.

You deserve a City Council that works for you. Not just asking questions, but finding solutions. It's time for a new generation of pragmatic, proactive leadership.

Jessie Israel – a proven track record of getting things done

Jessie is a leader who finds smart, innovative solutions. As an entrepreneur within King County Parks, she helped save 25,000 acres of parkland when 80% of the budget was cut. Those parks – from Cougar Mountain to the Burke Gilman - are still open today.

Jessie's background includes: King County Parks executive; Center for Women & Democracy operations manager; consultant for Central Area, Eastlake, Denny Triangle, Wallingford neighborhood plans; Boards of Directors for City Year, Ballard Food Bank and the Women's Political Caucus; Peace Corps, West Africa; Seattle University graduate.

Jessie Israel – priorities that matter

Jessie will make sure Seattle's City Council delivers on the basics, with a vision toward our future success.

Environment: Smart investments in energy efficiency and the environment that will create jobs and attract a new, clean energy economy to Seattle.

Public Safety: Increasing neighborhood patrols, funding the gang unit, and tackling the increasingly hostile environment in downtown's public spaces while prioritizing real solutions to our human services needs.

Reliable Transportation: A long-term vision for moving people and goods with light rail, buses, bicycle paths, sidewalks, and maintaining roadways.

Jessie Israel – a leader we can work with and trust

Jessie is endorsed by: Seattle Times • Washington Conservation Voters • Women's Political Caucus • Cascade Bicycle Club • Alki Foundation (of the Greater Seattle Chamber of Commerce) • Seattle Firefighters Local 27 • Seattle Police Officers Guild • King County Realtors • Rental Housing Association • Building Trades Council • Union of Painters and Allied Trades • 34th District Democrats • King County Young Democrats • West Seattle Democratic Women • Allied Arts • Friends of Seattle • Seattle Transit Blog • and the Municipal League rates Jessie: Very Good!



Mike O'Brien

206-629-8879
obrienforseattle.com
info@obrienforseattle.com
206-984-4787 (fax)

I believe Seattle is a beautiful city with wonderful neighborhoods, great diversity, and rich culture.

But critical needs aren't being met.

We need affordable housing for families, schools that serve our children, and transportation that's efficient and reliable.

Is it any surprise that our city faces a \$72 million budget deficit when not one current Council member has experience or training in finance?

I'm running for City Council because Seattle needs someone who understands the issues and has the financial background to make a difference. I earned my MBA at the University of Washington and have 10 years experience as Chief Financial Officer of a Seattle law firm. I would be the only Council member with the fiscal knowledge to bring real oversight to the city's budget process.

Oversight must start with the \$4 billion downtown deep-bore tunnel to replace the Alaskan Way Viaduct.

The deep-bore tunnel is a bad deal for Seattle. It doesn't connect to downtown and it won't serve 60 percent of the people who use the viaduct today. It won't meet our long-term transportation needs.

We've already rejected the tunnel — 70 percent of Seattle voters said no in the 2007 election. But politicians want to build it anyway and stick us with the bill, through higher taxes or increased rates and fees.

As a City Council member I will fight for better alternatives. I know how because I've done it before.

As Chair of the Sierra Club, I stood up to politicians who said we had to build 182 miles of new highways to get light rail. Together we rejected that plan. Today, we're laying the foundation for cost effective and sustainable transportation.

As a former CFO, I know **we can have smart policies that are good for the economy, nurture our communities, and protect our environment.**

The future for Seattle that I envision includes:

- **No downtown deep-bore tunnel.**
- **Affordable housing**, so teachers and firefighters can live in the communities they serve.
- **Reliable transportation**, where people can get around with just a transit pass or a bicycle.
- **Great neighborhood schools**, so every child can get a good education — no matter where they live.
- **Job opportunities** through smart policies that enable businesses to thrive.

Please vote for me, Mike O'Brien, for Seattle City Council position 8. I will represent your interests and work for the priorities we all care about most.



Robert Rosencrantz

206-726-9999
www.robertrosencrantz.com
robert@robertrosencrantz.com

I'm running for City Council to make sure your tax dollars are used wisely.

Keeping Seattle affordable is near to my heart. I want all our children to be able to live here when they grow up. Much of my work has involved creating or preserving affordable housing by successfully bringing together non-profits, government and investors.

Growing up in Seattle, I learned about housing from the ground up, beginning with my first job as an apartment house janitor. After Terry and I got married we lived modestly and saved enough over the years to buy four apartment buildings. We keep rents reasonable and provide nice places to live for our terrific tenants.

Jobs & the Economy

The City must work better to keep high-paying jobs here and attract new industries. I'll make sure we create opportunity, rebuilding a job-growing economy.

The Viaduct Replacement

Some say don't build a tunnel, just tear down the Viaduct -- dumping 110,000 cars and trucks a day into downtown traffic.

The tunnel wasn't my first choice. But the state funding is in place to build it. We have to do something. Let's get started.

Seniors, homeowners and renters must not be stuck with the bill. Opening up the waterfront will be a goldmine for developers and downtown property-owners. I will make sure they pay any cost overruns.

Actively Involved Citizen

For many years I have actively served on boards or as a volunteer, including:

- Friends of the Cedar River Watershed
- Children's Hospital Citizen's Advisory Committee
- Church Council's Interfaith Task Force on Homelessness
- Thornton Creek Alliance
- Fort Lewis, working with wounded Soldiers
- Tabor 100, empowering minority-owned businesses
- AIDS Housing of Washington

As a past Community Council president, I know how hard it is for neighborhoods to have their voices heard at City Hall. If elected, I'll listen. My door will always be open.

Rated "Outstanding" by the Municipal League

"[Robert Rosencrantz] has made numerous outstanding contributions requiring skills related to the office, is a path-finding and respected leader, and brings knowledge and creativity to issues facing the office."

I'm Robert Rosencrantz. I ask for your vote.

Endorsed by: Speaker of the House Frank Chopp, Ruth Woo, Rev. Dr. Samuel McKinney, Vivian McLean, Representative Sharon Tomiko Santos, Representative Eric Pettigrew, Senator Ed Murray, Ellen Ferguson, Senator Ken Jacobsen, Bobby Forch, Representative Jamie Pedersen, Jordan Royer, and many others.

80 City of Shoreline Council Position No. 1 (nonpartisan office • 4-year term)



Keith McGlashan

PO Box 60054
Shoreline, WA 98060
206-841-8686
www.reelectkeithmcglashan.com

Occupation: James Alan Salon, Retired / Starbucks, Barista

I've been a long-time Shoreline volunteer and community leader serving as your councilmember for four years.

I've managed an award-winning small business in Shoreline for 26 years and understand the need to turn our economy around. I've worked to attract businesses, and with them jobs and tax revenue, both essential for smart growth.

Since I've been on the council I've supported the addition of more police for traffic safety and improvements to our parks. I've championed the Aurora and Interurban Trail projects and pushed for neighborhood-conscious mixed-use development.

I've earned many endorsements for my work: State Senator Fairley, Representatives Kagi and Liias, business leaders, environmentalists and neighbors across Shoreline.

Shoreline is a great city. We've been voted best neighborhood for the past two years and I will make sure it stays that way. With your vote, I will be the common sense voice for your priorities.

Council Position No. 3 (nonpartisan office • 4-year term)



Patty Hale

18405 Aurora Avenue N Suite H-106
Shoreline, WA 98133
206-365-8596
ElectPattyHale@msn.com

Occupation: K-12 Substitute Teacher, Shoreline School District since 2000.

Education: BA in Education, Eastern Washington University. I am continuing graduate studies at Seattle Pacific University.

For the last 15 years, I've been involved in dozens of Shoreline community organizations – from the Shoreline Parks Board to my Neighborhood Association, as a founding member of Shoreline Council of Neighborhoods to Block Watch organizer and as a Shoreline Police volunteer. **I've worked with my neighbors to solve problems and make Shoreline a better place to live and raise a family.**

As a mom, teacher and long-time community volunteer, *I share your priorities*. On the Council, I'll fight for: • A stronger local economy that supports business • sustainable development that protects our neighborhoods • police, fire and emergency protection we can count on • clean and safe parks and open space.

I am proud to be rated "Very Good" by the Municipal League and endorsed by Supreme Court Justice Faith Ireland, former Mayors Connie King and Scott Jepsen plus hundreds of neighbors.

Visit www.ElectPattyHale.com for the complete list.



Will Hall

832 NW 193rd Street
Shoreline, WA 98177
206-801-7249
www.ElectWillHall.org

Occupation: Senior Legislative Analyst, Snohomish County Council

Education: University of Chicago, BA, 1985; Johns Hopkins University, MA, 1988; University of Washington, MMA, 2000

As a planning commission volunteer for five years, I have listened to you and your neighbors describe your vision for Shoreline. Now I want your vote to **protect our neighborhoods, protect our environment, strengthen our economy, and improve transportation options** by focusing economic development in the right places.

I have a decade of full-time experience working with governments and communities to strengthen neighborhoods and restore the environment. As a former teacher, soccer coach, and business consultant, I also understand the importance of having great schools and local businesses.

People trust me to seek input, respect all opinions, and make decisions through an open process so we can get the job done and keep costs down. My approach helped build consensus for Shoreline's new vision statement, environmental regulations, and improved transit coordination.

Will Hall: trust, respect, service, experience. Rated "Outstanding" - Municipal League. Endorsed - King County Police Officers Guild.



Shari Tracey

19514 Burke Avenue N
Shoreline, WA 98133
206-542-5763
www.ElectShariTracey.com

Occupation: Special Projects & Events Manager

Education: Shoreline Community College

Shari will be our public servant bringing ethical, accountable, and open government back to the Shoreline City Council. A 17 year Shoreline resident, Shari has worked for the King County Council and at a local law firm for 21 years. She raised her family in Shoreline, values our quality of life, and shares our vision for the future.

Shari is a proven community leader. She co-chaired the successful 2006 Parks Bond, served on Shoreline's Long Range Financial Planning Committee, is a Rotary member and an Echo Lake Neighborhood Association board member.

Shari is a problem solver who works collaboratively and gets results. She makes tough decisions using sound judgment. The Municipal League rated Shari higher than her opponent.

Shari has broad community support. Endorsements include Senator Darlene Fairley, the King County Police Officers Guild, and hundreds of our friends and neighbors.

Vote Shari! A responsive decision maker – for a change!

As your Mayor and Councilmember, I supported increasing public safety and keeping our streets and sidewalks safe and maintained. I have been a strong advocate for improving our open spaces and parks, and enhancing Shoreline's neighborhoods while being fiscally responsible.

I led making our government more transparent, welcomed public input, and assured robust discussions. I advocated planning for growth while protecting neighborhoods from developments such as Point Wells. I will continue effective advocacy for small businesses, economic development, and our fair share of transportation funding, including completing Aurora Avenue.

I have the education, training, and experience to lead and work productively, both locally and regionally. I serve on Association of Washington Cities-Director, King County Regional Transit Committee, SeaShore Transportation Forum, and Suburban Cities Association Budget Group.

Endorsed: King County/32nd District Democrats • WFSE-AFSCME 341 • ATU 587 • Women's Political Caucus • Washington Conservation Voters • 32nd District Republicans "preferred" candidate.



Cindy Ryu

15017 Aurora Avenue N
Shoreline, WA 98133
206-605-1588
www.CindyRyu.com

Occupation: Mayor; manages family-owned property with her husband

Education: Bachelor of Science, UW - Microbiology & Immunology; Master of Business Administration, UW - Operations Management

Council Position No. 7 (nonpartisan office • 4-year term)



Christopher Roberts

PO Box 55621
Shoreline, WA 98155
206-708-1734
www.robertsforshoreline.com

Occupation: Instructor, University of Washington; Member Shoreline Human Services Task Force

Education: MA, University of Washington; BA, Willamette University; PhD in Political Science expected 2010.

"Exceptional" – Shoreline Chamber of Commerce

To keep our neighborhoods strong and vibrant, we need more members of the Council who will listen to **your ideas** and **your concerns**. I want to be **your voice** and **your advocate** on the Council.

Our Council must listen to our community members, business leaders, and educators; encourage small business development; provide the tools to retain and attract new businesses that create local jobs; and partner with other agencies to ensure a high-quality workforce.

I will provide honesty, transparency, and fiscal responsibility for our community. I will continue to speak against the large-scale development at Point Wells and the proposed jail in our city, and for citizen-driven development that respects existing neighborhoods and protects our environment. I will advocate for the preservation and expansion of our parks and open spaces for our children and grandchildren.

Endorsements: King County Democrats, Labor, and your neighbors



Ron Hansen

20146 25th Avenue NW
Shoreline, WA 98177
206-546-5417
http://ronhansenforcouncil.com

Shoreline celebrates fourteen great years as a city recognized for providing a high quality of life for those raising children, pursuing careers, or enjoying retirement. Together we have formed a city and begun building our own identity, services and facilities. There are still great opportunities ahead. Using my professional business skills and fourteen years of local and regional government experience I will continue to work for tax containment, fiscal responsibility and accountability, safe streets, communication with the community, opportunities for arts and recreation, an attractive environment for business and economic development, and a city government that is efficient, effective, easily accessible and dedicated to meeting the needs of the community. **I am committed to continue displaying honesty, integrity, and veracity in leadership, upholding individual worth and dignity, providing protection for personal and property rights, and promoting a sense of community and cooperation among Shoreline residents. I would appreciate your vote.**

82 **Seattle School District No. 1**
Director District No. 4 (nonpartisan office • 4-year term)



Michael DeBell

5203 First Avenue NW
Seattle, WA 98107
206-782-4622
michaeldebell.org

Occupation: Business owner

Education: BA Economics UCSD, MA Social Studies HSU, PhD Candidate Political Science UW

I am proud to serve as President of the Seattle School Board, governing a good school district on its way to becoming a great school district. Over the past four years, I have sought to improve academic performance, spend taxpayers' money wisely and sustainably, reform district policy and priorities to align with children's needs, and increase parent engagement and confidence in our schools. As we move forward, I will continue to work hard toward these important goals.

It is critical, however, that as a Board and as a community, we set our sights higher still. Seattle needs high quality schools with innovative programs in every neighborhood. We need high expectations and rigorous standards in every school. We must hold all employees accountable. We must foster engagement, public-private partnerships, and healthy debate on our Board and across our city.

The goals of our Strategic Plan, "Excellence for All," can produce consistent, high quality instruction across the District. The heart of this plan is a performance accountability system for teachers, principals, administrators and schools. We must revitalize our low performing schools quickly and decisively. We must measure the quality of our work and reward excellence.

Change is difficult but worth the effort. All our children, who collectively are Seattle's future, must be given the tools for success so that they may thrive in a challenging local and global economy.

I will continue to listen to students, parents, taxpayers, staff, my fellow elected officials and community leaders across the city to guide my decisions. Great schools require that we all work together. Thank you for the chance to serve our wonderful children. Please support our public schools in every way you can!



Kay Smith-Blum

PO Box 868
Seattle, WA 98111
206-901-1114
electKSB.org

Occupation: Butch Blum Inc., CEO (former Neiman Marcus Executive)

Education: University of Texas, Bachelors of Business Administration, Marketing Major

We need to reframe the conversation. This is about an achievement gap – a city not providing a 21st Century education for all our children. Since 1992, Kay Smith-Blum has created community-building strategies that have generated thousands of volunteer hours and poured millions of dollars into our Seattle Public Schools. She knows we can bridge the gap by engaging ALL stakeholders NOW.

We must hear the community's voice PRIOR to policy

proposals that affect the client – our students. We must reach out to new parents and provide pre-school for economically strapped children. From kindergarten on we need: • Foreign language • Rigorous academics • Daily PE • Arts & Music curriculum • Courses for fiscal literacy, citizenship, vocational & entrepreneurial training, environmental and wellness training.

Simple, but bold, changes would include teaching core academics during the hours when students actually learn according to age and creating public/private partnerships so ALL students are prepared for a global marketplace.

Kay and Butch Blum, are Capitol Hill residents, with 3 sons, all of whom attended Seattle Public Schools. Kay has balanced multi-million dollar budgets since age 23 and been a business owner for 28 years. She has served on the PTSA boards of Montlake, WMS and Garfield.

Kay has the best Municipal League rating for her position, rated Very Good. She is endorsed by *The Seattle Times*, *The STRANGER*, the Young Dem's of King County, The KCDCC Exec board, the 43rd Dem's, the Hon. Mary Lou Dickerson, Hon. Jamie Pederson, Hon. Ruth Kagi, Hon. Bobbe Bridge, Hon. Skip Priest, Hon. Jeanne Kohl-Welles, former SSD Directors Don Nielsen and Barbara Schaad Lamphere, Trish Millines Dziko, TAF founder, Tina Podlodowski, James Kelly, Urban League President, Debbi Brainerd, Islandwood founder, community leaders Gayle Johnson, Craig Dawson, Oscar Desper and numerous teachers, principals and activists in Seattle Schools.



Mary E. Bass

901 Martin Luther King Way
Seattle, WA 98122
206-271-4137
contact@marybass.com

Occupation: Project/Program Manager, King County Department of Transportation

Education: B.A. Economics, UW; Masters Public Administration, focus in Public Policy and Environmental Economics, UW

Mary Bass believes public education is the cornerstone of our democracy. It enables our students to make choices and decisions which lead to a successful life and society.

For eight years, Mary has been a model community leader. Her leadership has connected families to our schools. She has worked tirelessly for fiscal accountability and oversight and for the means to close the achievement gap.

She has taken strong positions to serve all children, advocating for: the strongest high school math program; a neighborhood student assignment plan which build enduring school

communities; the implementation of each academic audit's recommendation for Special Education, Alternative Education, and Bilingual Education; increased state funding (in 12 years Washington State has gone from #26 to #46 in nation); and the implementation of the strongest water remediation plans in the nation. In her advocacy, she has remained resolute.

Corporatization is the single most concerning, overarching issue public education is facing today. As Board President, she led the Board to a 6-1 vote against statewide charter schools and fought against school closures three separate times.

Given another four years, Mary Bass will: • demand that challenging academic programs be placed across the city in all neighborhoods • promote bi-lingualism and multi-lingualism in our schools • ensure that all students get the necessary tools to excel in math and science • champion Washington schools attaining the national average of state financial support.

Keep Mary Bass' experience, compassion and integrity working for all of Seattle's children.

Selected endorsements/rating: King County Democrats, 37th District Democrats, 11th District Democrats, Metropolitan Democratic Club, Highest rating from SEAMEC, Women's Political Caucus, Operating Engineers Local 609, PubliCola.net, Sen. Adam Kline, Rep. Sharon Tomiko Santos, Rep. Eric Pettigrew, King County Councilmember Larry Gossett, Charles Z. and Elie, George Griffin, III, Justin Simmons. Highest rating in SEAMEC

84 **Seattle School District No. 1**
Director District No. 7 (nonpartisan office • 4-year term)



Betty Patu

PO Box 78317
Seattle, WA 98178
<http://bettypatu.com/>

Occupation: Retired after 32 years of working for Seattle Public Schools.

Education: BA Educational Leadership, now completing Master's Degree in Education Administration from Antioch University.

There are few who understand the challenges of today's classroom as well as Betty Patu. She has been the trusted friend and professional to whom families, students and administrators have turned to keep kids in school and graduating.

Many at-risk students now come back to school to graduate with their diplomas, thanks to Betty.

Proven Experience

Betty worked tirelessly to create after-school tutoring programs for students, recruiting highly-qualified University students to tutor. She created individual programs to help student's make-up failing credits and successfully directed award-winning programs

to close the achievement gap, grow the number of college-bound students and reduce gang violence.

Proven Leadership

Betty has served as a program administrator and community leader for Seattle Public Schools. She has learned how to find creative solutions for tough budget decisions without compromising her high standards for students. Board membership includes: Asian Counseling Referral Services, Rainier Beach Community Empowerment Coalition, Rainier Beach Foundation, Parent Teachers, Students Association and Founder, Islanders Children & Youth Services.

Proven Results

Betty's efforts have directly increased graduation rates, lowered drop-out rates, and increased family and school partnerships. Her work has won her local and national acclaim: Big Sister "Role Model" Award; Women's Funding Alliance, "Dorothy Bullitt" Award; Asian Counseling Referral Services "Community" Award; Alliance for Education, A+ Excellence in Education Award; International Examiner, "Community Voice" Award; Rainier Beach Community Empowerment Coalition "2007 RB" Award, and Sen. Patty Murray's "Golden Tennis Shoe" award for outstanding community contributions.

Betty's most personal accomplishment: all five of her children graduated from college.

KEY ENDORSERS: NWPC-WA, Metropolitan Democratic Club, 37th and 11th District Democrats, Former School Board Director Michael Preston, State Representatives Sharon Tomiko Santos, Bob Hasegawa, and Eric Pettigrew, Former State Representative Dawn Mason, King County Councilman Larry Gossett, Former Seattle City Council Member David Della.



Wilson Chin

PO Box 94792
Seattle, WA 98124
206-498-2369
wilsonchinforschools.com

Occupation: research scientist

Education: bachelor of science University of Washington

My family has a long history of commitment to Seattle Public Schools. My brothers, sisters and I are all products of Seattle Schools. I graduated from Cleveland and earned my BS from the University of Washington.

My wife is Tina Young, an educator at Seattle Central Community College. Our four children have always attended south end schools.

Professionally I'm a research scientist at the University of Washington developing HIV trial vaccines. I coach youth basketball and serve on the Building Leadership Team at Kimball Elementary.

I believe Seattle school kids deserve an equitable, quality public education. As director, I'd focus on respecting the rich diversity that all of our students possess; crafting a rigorous, accountable educational environment that prepares college students, skilled workers, and artisans.

I ask for your vote.

Endorsements: Ruth Woo, Garry Owens, Kip Tokuda, George & Pat Robertson, Melinda Mann, Ai Sugiyama

Director District No. 2 (nonpartisan office • 4-year term)



Corey Murata

19855 25th Avenue NE #311
Shoreline, WA 98155
206-818-2459
<http://coreyforschools.murata60.com>

Occupation: Librarian

Education: Education: B.A. - History (University of Hawaii); MLIS - Library Studies (University of Hawaii)

The Shoreline Schools are a destination. Their history and reputation of excellence attracts parents who want a quality education for their children. As a member of the School Board, I will work towards the continuous improvement of our schools by advocating for a culture of openness, collaboration and inclusiveness in the Board's planning and decision making processes. It is through open and continuous communication with parents, neighbors and stakeholders that the Board can make the best decisions to serve the wide diversity of families in the Shoreline Schools.

As a librarian and the son of school teachers, I have been around education and educators all my life. As the father of two young children who will be entering the Shoreline Schools I care deeply about the long-term success of our schools. Help me to keep the Shoreline Schools a destination for our children and generations of children to come.



Debi Ehrlichman

511 NW 162nd Street
Shoreline, WA 98177
www.DebiForShorelineSchools.com

Occupation: Current President Shoreline School Board; Former Special Education Teacher

Education: University of Washington, M.Ed.; Stanford University, B.A.

At a time when experience and commitment matter most, I'm ready to continue building on accomplishments Shoreline School District has achieved since I joined the Board.

Early in my first term, the District faced a serious financial deficit. In response, the Board worked with new administrative leadership to set strong fiscal practices and create a balanced budget. I am proud that at the close of 2008-09, we achieved a healthy 4% unreserved ending fund balance.

An uncertain economy continues to challenge us all. That's why Shoreline/Lake Forest Park students, families and staff deserve continuity and proven School Board leadership. My 25 years of broad-based, hands-on volunteer work with PTA, Shoreline Schools Foundation, and successful levy campaigns, as well as parenting three children through Shoreline Schools ('98, '00, '07 Shorecrest HS grads), has prepared me for this important work advocating for strong, effective public schools. I appreciate your support.

Director District No. 3 (nonpartisan office • 4-year term)



David Wilson

18405 Aurora Avenue N, Suite H-PMB #121
Shoreline, WA 98133
David22651@Yahoo.com

The communities of Shoreline and Lake Forest Park have a rich tradition of supporting a strong public school system. Our public schools reflect the positive diversity of our community and provide an encouraging educational environment for our children.

Our family moved to Shoreline in 1997. My wife taught at Parkwood Elementary School in Shoreline for 7 years. We have a daughter who will be a junior next year at Shorewood High School. Our son will be a sophomore at the University of Puget Sound

My priorities are a safe, nurturing learning environment, fiscal accountability, professional development, curriculum innovation, and encouragement of a strong partnership between parents, students and schools.

I believe that nothing will open the door of opportunity for the students of the Shoreline School District more than a quality public education. This is why I am again asking for your vote.

86 **Northshore School District No. 417**
Director District No. 1 (nonpartisan office • 4-year term)



Sue Buske

4807 196th Street SE
Bothell, WA 98012
425-481-1639
<http://sites.google.com/site/reelectsuebuske>

Occupation: School Board Member

Education: Bachelor of Arts of Political Science from University of Washington

I have been honored to serve the students and families of Northshore as a School Board member for the past four years, working in the best interests of all students. I understand the complexities of public education and want to maintain our high-quality instructional program. I recently voted for the adoption of "Math Expressions" curriculum for K-5 and piloting the Prentice-Hall and Holt curriculum for older students. We avoided teacher layoffs this year because we listened to our community and protected the classroom.

I have lived in the Northshore School District for nearly 30 years and have been an involved parent and PTA volunteer for 17 years. I have been a substitute teacher, as well as a volunteer in schools and on school district committees. I served as PTSA president for five years and was PTA Northshore Council President for two years.

Re-elect Sue Buske to the School Board.



Julia Lacey

www.julialacey4nsd.com

Occupation: Certified Teacher, experienced: preschool – high school traditional and alternative classrooms.

Education: University of Washington – BA in Communication, University of Denver-Endorsed to teach 6-12th grade English.

Northshore has a reputation of educational excellence that benefits our children, property values, and community pride. However, the current school board's lack of direction and closed door policy, evident in recent proposals and budget cuts, diminishes the quality of our schools and community.

Now is the time for a board that serves the community it represents. As the only candidate **endorsed by the teachers**, nurses, and office professional employee associations, I will enlist all communities involved because I value their contributions and trust their commitment toward bettering our district.

Now is the time for strong leadership to make decisions to lower class sizes and raise the level of education teachers can provide. My education experience and strong ties to my community prepare me to ask the right questions, collaborate effectively with all involved, and explore innovative solutions for improving our district while staying focused on student learning.

Director District No. 4 (nonpartisan office • 4-year term)



Sandy R. Hayes

13147 NE 145th Place
Kirkland, WA 98034
425-308-7036
sandyh@electroimpact.com

Occupation: LSAT Instructor

Education: University of Washington, BA & JD

As an undergraduate and law graduate of the University of Washington and someone who has spent the last 11 years running a test preparation business, public education in Washington has always been very important to me. Being a mother of three children in the Northshore schools, I have been actively involved by volunteering in the classroom and serving on several PTAs. I am continuously impressed with the quality of the Northshore schools but grow increasingly concerned about the impact of state budget cuts. In this tough budget climate, I hope to be part of the process of mitigating the effects of these cuts. I am committed to help protect the core of what makes the Northshore School District strong. It would be an honor to build on my involvement in the district and to serve all of the school district community.



Todd M. Banks

15803 163rd Avenue NE
Woodinville, WA 98072
425-482-0311
www.Toddbanks4nsd.com

Occupation: General Manager, CFO,
Partner - Kenmore Air Harbor, Inc.

Education: Bachelor of Science in
Economics, University of Oregon

Background: Resident of Bothell & Woodinville 14 years • Three students in district • Successful community businessman with management experience and financial expertise • Active community and school volunteer.

Our school district is challenged with unprecedented economic conditions and clearly needs (and tax payers deserve) **strong financial management and accountability**. Our community needs a School Board that's **accessible, transparent**, and open to **cooperative problem-solving**. Our teachers need the resources to deliver excellent education in properly sized classes.

I offer **leadership, vision, honesty, and integrity** while embracing our district's mission: ***Strengthening Our Community Through Excellence in Education***. I'm committed to keeping our district financially healthy while protecting our property values, reputation and community pride. Our School Board needs a **fresh voice!** **Let's refocus on educating our kids, they're our priority.**

I welcome the opportunity to serve and will work diligently for **our families**.
Endorsed by Washington State Attorney General – Rob McKenna



Cathy Swanson

14319 172nd Avenue NE
Redmond, WA 98052
425-483-1129
www.reelectcathyswanson.com

Occupation: Mental Health Counselor

Education: Bachelors' of Arts from
University of Washington; Masters' of
Sciences from Seattle Pacific University
completion June 2010

I serve on the Northshore School Board because I believe in being involved in the Northshore community. My experience as a parent in the district and as a PTA and community volunteer has reinforced my belief in a strong public school system and I will continue to maintain the excellent schools for which Northshore is known.

During my eight years on the School Board I have fought for stable and adequate funding for public schools, and worked hard to make sure our legislators understand how their decisions impact our community.

I appreciate the feedback I receive from the community and I work hard to represent the best interests of all schools and all students. As a member of the Northshore School Board I am committed to discussing important issues in public, facilitating community input, and following through on commitments.

I would be proud to continue to serve the Northshore community.

88 Fire Protection District No. 16
Commissioner Position No. 3 (nonpartisan office • 6-year term)

No
Photo
Submitted

Ronald Gehrke

No statement submitted.

Commissioner Position No. 5 (nonpartisan office • 6-year term)



David Maehren

6316 NE 196th Street
Kenmore, WA 98028
425-481-7199

Occupation: Retired King County Sheriff
Captain

During my current term the Northshore Fire department has dramatically improved our accounting system, received voter approval for a new headquarters station (construction began in September) and added a full time Medic 1 unit at the LFP station. With your support in the coming term I will focus on maintaining our quality service level despite reduced property tax revenue. The district assessed valuation will be reduced by 18% in 2010 due to falling home values. I will work to implementing best business practices, strong cost controls, utilization of strategic planning and foster additional regional collaboration. Thank you for your support.

Shoreline Fire Department
Commissioner Position No. 3 (nonpartisan office • 6-year term)



Rod Heivilin

My wife and I have been residents of Shoreline for 42 years. Both of our children graduated from Shorewood High School. We have been active in the community and care a great deal about the quality of life the citizens of Shoreline enjoy. The fire department, for whom I worked for more than 24 years, has always served our community well. Nowhere across the State of Washington does the community stand behind its fire department like it does in Shoreline, and I would like to do all I can to keep that trust and commitment alive. I believe that as a commissioner I can work to make that happen. It is with that desire that I ask for your vote.

Lake Forest Park Water District

89

Commissioner Position No. 2 (nonpartisan office • unexpired 4-year term)



Julie Hungar

18213 Ballinger Way NE
Lake Forest Park, WA 98155
206-365-5738
jhungar@hotmail.com

I have been a resident of Lake Forest Park since 1972 and have raised four children here. I value the purity and excellence of our water and commend the commissioners and staff of the Water District for their management and guardianship of this resource. As commissioner, I will do my best to support their good work and to help keep District customers informed of all important matters related to our water supply.

Occupation: Retired Community College
Educator

Education: Post Graduate

Commissioner Position No. 3 (nonpartisan office • 6-year term)

No
Photo
Submitted

William E. Currie

No statement submitted.

90 **Shoreline Water District**
Commissioner Position No. 3 (nonpartisan office • 6-year term)



Charlotte Haines

As your water commissioner I will continue to work hard for the residents of Shoreline and Lake Forest Park to maintain the highest water quality while working to keep the lowest rates possible for the ratepayers.

I will continue to encourage community involvement, the high level of customer service and availability now provided by the Shoreline Water District board and staff.

While the current economy has resulted in a decrease in building development, job loss and loss of financial stability the Shoreline Water District must continue to plan for the future. This includes estimating the cost for future growth while maintaining a strong infrastructure. As a board member I feel that capital projects required to support development should be paid for by the developers, not the general ratepayers.

Ronald Wastewater District
Commissioner Position No. 3 (nonpartisan office • 6-year term)



Brian T. Carroll

1408 NW 186th Street
Shoreline, WA 98177
206-849-0800
carrollbt@earthlink.net

Occupation: Chief Financial Officer

Education: University of Washington, BA in Accounting

As the incumbent and District President, working with fellow commissioners and the management team, I have the experience and commitment to serve the ratepayers of the District. Experienced in financial accounting, I am qualified to set policies governing the management, financial assets and facilities of the District. As a corporate officer for a forest products, land and asset management company, I am trained in business operations and strategic planning.

A native of Shoreline, graduate of Shorewood High School and UW (BA in Accounting), I am married with two sons. A past homeowners' association president, former Hillwood & St. Joseph School soccer coach, and Bitter Lake basketball coach, I serve on the board of Family Law CASA of King County and am a member of the AICPA, the WSSCPA and Washington Association of Sewer and Water Districts.

Committed to YOU the ratepayers, I ask for your vote.



Al F. DeYoung

PO Box 863
Woodinville, WA 98072
425-486-9731
lucydeyoung@isomedia.com

Occupation: Property Investment and Management

Education: Bothell High School

Having been a resident of the Northshore area all my life has given me the opportunity to recognize the importance of making quality healthcare available on the Eastside. Thus, as a Commissioner on the Evergreen Hospital Board for many years, I have been able to work for and see Evergreen grow from a small Community Hospital into the major Medical Center that it is today. Evergreen now provides many services including Home and Hospice Care, the Family Maternity Center, the Outpatient Surgery Center, and new facilities for the Booth Gardner Parkinson's Center and the Multiple Sclerosis Center. Evergreen is among only three Hospitals statewide to receive the Outstanding Achievement Award from the Commission on Cancer of the American College of Surgeons. My goal as your Commissioner is to continue the work to see Evergreen provide a complete range of services for the community at an affordable cost to our taxpayers.

Commissioner Position No. 4 (nonpartisan office • 6-year term)



Charles A. Pilcher

10127 NE 62nd Street
Kirkland, WA 98033
206-915-8593
www.PilcherForEvergreen.com

Occupation: Emergency Physician

Education: BS, Mathematics, Duke University; MD, University of Washington School of Medicine.

budgeting, or working with architects on our state-of-the-art facilities, will be an asset to the Board, as we face the anticipated challenges of healthcare reform.

I recently retired as a full-time Evergreen emergency physician and was the ER Medical Director for most of my career. I have served as President of the Medical Staff and the "voice" of the highly successful "Yes for Evergreen" campaign to build the new patient tower. I was Medical Director of Evergreen Medic I for 15 years and was honored as Washington's EMS Medical Advisor of the Year. In 2005 the Evergreen Hospital Commissioners presented me the District's annual "Community Service Award." I also serve on the Evergreen Healthcare Foundation Board.

I commit to you, our taxpayers, to keep the hospital's tax rate as low as possible while providing affordable, consistent, and award-winning healthcare. As a doctor and community supporter, my goal is to insure that Evergreen is truly working "to enrich the health and well-being of every life we touch." I look forward to continuing to serve this superb organization by representing you on Evergreen Hospital's Board of Commissioners.

I am endorsed by firefighters, paramedics, community leaders, Evergreen supporters, and hundreds of your neighbors. You yourself may have been one of my 100,000+ patients, and I trust that I have earned your respect, support, and your vote.

Throughout my 35 year career as an emergency physician I have been honored to be a part of Evergreen's remarkable journey from a community hospital to a highly respected regional medical center. I now want to serve in an even larger role, as the only physician on the Board of Evergreen Hospital (KCPHD #2).

My experience in both medical and operational aspects of managing a healthcare organization, whether monitoring the quality of your care,



Rex H. Lindquist

7801 NE 133rd Place
Kirkland, WA 98034
425-823-0652
takm7@comcast.net

Occupation: Fire Chief

Education: Eastern Washington University

of the examples. The Physicians are first rate, working with great nurses. We have recently formed partnerships with Overlake Hospital to better serve the greater Eastside. As a lifelong resident and a Firefighter for over 30 years, I am committed that our Hospital be there for our children and us. It is important to use our taxes to improve the health of our community. During my term on the Board (since 1996), we have not increased the basic tax rate, but we have improved our level of care. Our tax dollars total about 4% of our operating budget and is all invested back into the community. I believe our Hospital should be run, as a Citizen Board not one that has Board members with special interests. A Citizen Board keeps us focused on our true needs. I will not be accepting money, asking for in kind donations or put up political signs. This important position should avoid the trapping of politics. I ask for your vote and support to continue our work to improve our healthcare. Our new buildings have been constructed to meet the growing needs for service. We now have a state of the art Emergency Department, which is reducing waiting times and makes us better prepared for disasters if they happen.

I believe my responsibility is to ensure King County Hospital District #2 (Evergreen Hospital Medical Center) provides quality care at reasonable costs. Evergreen is providing award-winning healthcare. Women and Family Health Services, Newborn critical care, and Hospice are just a few

Official Ballot Title

King County

Charter Amendment No. 1

Repeal of Section 350.20.30 and Portions of Article 9 – Transitory Provisions

Shall those no longer relevant portions of King County Charter Article 9 relating to the county's prior transition to a home rule charter and King County Charter Section 350.20.30, relating to the county's transition to a metropolitan form of government, be repealed, as provided in Ordinance No. 16484?

YES

NO

Explanatory Statement

Article 9 of the King County Charter relates to the 1969 transition from the pre-charter form of government to the form of government established by the charter. King County Charter Section 350.20.30 relates to the county's 1992 transition to a metropolitan form of government. Both of those transitions are complete, and the applicable charter language is obsolete. If adopted, Charter Amendment No. 3 would repeal Section 350.20.30 and all of Article 9 except certain provisions in Section 990, relating to the effect of the May 1, 1969 charter adoption on prior county laws, actions and obligations.

Statement for

When the King County Charter was first enacted, the mechanics of moving seamlessly to a new form of government was a major concern. Article 9 of the Charter, entitled "Transitory Provisions," by its own terms is "related to the transition from the existing form of government to the form of government established by this charter." In 1992, the County government merged with Metro and Charter section 350.20.30 was added to deal with the merger process. As Charter government has been in place for almost 40 years and the Metro merger is complete, these provisions are virtually all obsolete.

Removing obsolete material from the Charter makes the document clearer and more understandable to the public as well as less expensive to print and distribute. Citizens, including historians and other researchers, will retain archival access to the deleted material. The 2007-2008 Charter Review Commission, on which we each served, supported this amendment without dissent. We urge voters to support this essentially housekeeping measure.

STATEMENT PREPARED BY: Bryan Glynn, Doreen Cato, Lois North

Statement against

No statement submitted.

Official Ballot Title

**King County
Charter Amendment No. 2
Repeal of Charter Section 475 – Work
Programs and Allotments**

Shall King County Charter Section 475, relating to preparation of work programs and requested allotments and to appropriation transfers, be repealed, as provided in Ordinance No. 16546?

- YES
- NO

Section 475 of the King County Charter requires all county agencies, except the county council, to present work programs and requested allotments to the county executive to control expenditures and prevent deficits. It also contains provisions regarding the transfer of appropriations by the executive and the council. Section 475 was originally adopted in 1969 and since the budget processes that are referred to in Section 475 are no longer used, the section has become obsolete.

At the request of the county executive and the county council, the King County Charter Review Commission recommended repeal of Section 475. If approved, this charter amendment would repeal Section 475.

The repeal of Section 475 is not intended to affect existing legislation or to limit the power of the council to adopt legislation regarding the matters addressed in Section 475.

Statement for

When it comes to a “constitution” such as the King County Charter, flexibility, including the freedom to adapt to changing times and circumstances, is critical. This is especially true with respect to tools used to monitor and control expenditures. Charter Section 475 addresses the fiscal control issue by means of a system of quarterly allotments and other devices. These devices were crafted to work with a budget control system that no longer exists. This Charter Amendment frees up present and future elected officials to enact by ordinance systems of fiscal control that are responsive to contemporary needs and which build upon modern budget monitoring methods without unnecessary Charter restraints.

Both Executive and Council staffs agree that allotments are cumbersome, outdated and add nothing to effective fiscal control. Moreover, the recently convened King County Financial Policies Advisory Task Force recommended that the allotment provision be removed from the Charter. The 2007-2008 Charter Review Commission, on which we each served, concurred without dissent. We urge voters to support this needed fiscal reform.

STATEMENT PREPARED BY: *Bryan Glynn, Doreen Cato, Mike Lowry*

Statement against

No statement submitted.

Official Ballot Title

King County

Charter Amendment No. 3

Amendment of Section 800 – Charter Review

Shall King County Charter Section 800 be amended to clarify that charter commission appointees are to be confirmed by the council and to provide that the council is required to consider proposed charter amendments and act on them at an open public meeting, as provided in Ordinance Nos. 16547 and 16599?

YES

NO

Explanatory Statement

Section 800 of the King County Charter sets forth a process for review and amendment of the charter. Pursuant to this section, at least every ten years, the county executive appoints a citizen commission of at least 15 members to review the charter and submit a report to the county council recommending amendments, if any, that should be made to the charter. If Charter Amendment No. 2 is adopted, it would clarify that the executive's appointees to the charter commission are subject to confirmation by the council. The amendment would also require the council to consider the commission's report and recommendations and to decide at an open public meeting how to proceed on the commission's recommended charter amendments.

Statement for

There are two provisions in the current Charter which speak to the formation and appointment of individuals to serve as commissioners. Section 340.40 stipulates that appointments by the county executive are subject to confirmation by a majority of the county council. Section 800 likewise states that the county executive is responsible to appoint a commission, but does not mention any need for confirmation by the County Council.

These discrepancies led to some disagreement and confusion. It was the unanimous recommendation of this Commission to amend the Charter so as to establish a clear appointment process.

Once seated, the Charter Review Commission deliberates for over a year on current needs and changing concerns within the charter that have developed over the previous ten years. It then makes recommendations for changes to the County Council. The second part of this Amendment requires the Council to respond publicly to these recommendations.

For the foregoing reasons, we urge you to vote yes to amend Section 800 so as to ensure that appointees to future Charter Review Commissions are confirmed by a majority vote of the County Council, and that the findings and recommendations of future Commissions are considered in an open public meeting.

STATEMENT PREPARED BY: Sarah Rinlaub, Tara-Jo Heinecke, Lois North

Statement against

No statement submitted.

Official Ballot Title

**King County
Charter Amendment No. 4
Adding New Section 897 – High
Conservation Value Properties**

Shall the King County Charter be amended to add a new Section 897 that would provide enhanced protection for certain county properties designated as high conservation value properties by prohibiting the county from conveying or relinquishing its interest in those properties or authorizing their expanded use, except in specified circumstances, as provided in Ordinance No. 16600?

- YES
- NO

King County has acquired interests in a number of open space properties in the form of fee simple ownership, conservation easements, and development rights. If approved, Charter Amendment No. 4 would provide enhanced protection of certain open space properties deemed by the county to have high conservation value. The county would not be permitted to convey or relinquish its interest in these properties or to authorize them to be used in a manner that was not permissible at the time the county acquired its property interest, except under certain circumstances as outlined in Charter Amendment No. 4.

The initial inventory of high conservation value properties would be established by an ordinance that is approved by a minimum of seven affirmative votes of the nine-member council. Additions to or removal of properties on the list would be by ordinance and would require seven affirmative votes of the council, specific findings of fact supporting the modification, a public hearing, and reasonable effort by the council to consult with the executive regarding the modification. An ordinance removing a property from the list would have to include certain findings of fact as set forth in Charter Amendment No. 4. Seven affirmative votes of the council would be required to override an executive veto of an ordinance establishing the initial inventory or modifying the inventory.

Statement for

Vote “Yes!” for the Open Space Preservation Act. It amends the King County Charter to enhance protection for over 156,000 acres of land already owned or held in a conservation easement by King County.

These irreplaceable properties include treasures such as Cougar and Taylor Mountains, forests, wetlands, rivers, wildlife, and salmon habitat. They are truly special places, whether to walk, bike, bird watch, or simply enjoy their beauty from a distance. With high conservation and resource values, they are also working forests, preserving jobs and nearby natural riches.

The amendment requires no new land to be purchased and involves no direct costs – the properties are already publicly owned. The amendment strengthens protection against the sale or transfer of these properties by requiring a 28-day public comment period, finding of facts, and a supermajority vote (7 of 9) of the County Council before any change in property status can occur.

The Open Space Preservation Act is unanimously supported by the County Council, Executive, environmental groups and community leaders. Check the website for a complete list. It provides strong protection to our most cherished green spaces through a defined public process and leaves a legacy for future generations to enjoy.
www.openspaceamendment.org

STATEMENT PREPARED BY: *Terry Lavender, Bob Ferguson, Reagan Dunn*

Statement against

No statement submitted.

Proposed No. 2009-0259.2 Sponsors Ferguson

AN ORDINANCE proposing an amendment to Section 990 of the King County Charter; repeal of Section 350.20.30 of the King County Charter, regarding the county's prior transition to a metropolitan government; and repeal of Section 900 of the King County Charter, Section 910 of the King County Charter, Section 920 of the King County Charter, Section 920.10 of the King County Charter, Section 920.10.10 of the King County Charter, Section 920.10.20 of the King County Charter, Section 920.10.30 of the King County Charter, Section 920.10.40 of the King County Charter, Section 920.20 of the King County Charter, Section 920.20.20 of the King County Charter, Section 920.20.30 of the King County Charter, Section 920.20.40 of the King County Charter, Section 920.20.50 of the King County Charter, Section 920.20.60 of the King County Charter, Section 920.20.70 of the King County Charter, Section 920.20.80 of the King County Charter, Section 920.30 of the King County Charter, Section 930 of the King County Charter, Section 940 of the King County Charter, Section 950 of the King County Charter, Section 960 of the King County Charter, Section 970 of the King County Charter, Section 970.10 of the King County Charter, Section 970.30 of the King County Charter, Section 970.40 of the King County Charter, Section 970.50 of the King County Charter and Section 980 of the King County Charter, regarding the county's prior transition to home rule charter form of government; and submitting the same to the voters of the county for their ratification or rejection at the November 2009 general election.

SECTION 1. There shall be submitted to the voters of King County for their approval and ratification or rejection, at the next general election to be held in this county occurring more than forty-five days after the enactment of this ordinance, an amendment to the King County Charter, amending Section 990 of the King County Charter and repealing Section 350.20.30, Section 900, Section 910, Section 920, Section 920.10, Section 920.10.10, Section 920.10.20, Section 920.10.30, Section 920.10.40, Section 920.20, Section 920.20.10, Section 920.20.20, Section 920.20.30, Section 920.20.40, Section 920.20.50, Section 920.20.60, Section 920.20.70, Section 920.20.80, Section 920.30, Section 930, Section 940, Section 950, Section 960, Section 970, Section 970.10, Section 970.30, Section 970.40, Section 970.50, and Section 980 of the King County Charter, as set forth herein:

Section 990. Transition.

~~((Except as provided by this article, the terms of office of elective county officers subject to this charter holding office on April 30, 1969, shall terminate on the effective date of this charter. All appointed officers and employees holding office on the effective date of this charter shall continue in the performance of their duties until their successors are appointed or until their duties are transferred, altered or abolished in accordance with the provisions of this charter. All boards and Commissions whose functions have not been transferred by this charter to another agency of county government established by this charter shall continue to function for one hundred twenty days after the effective date of this charter, at the end of which time they are hereby abolished unless re-established or continued by ordinance.))~~ All ordinances, resolutions and other official actions of the board of county Commissioners (~~which~~) that are in effect on the May 1, 1969, effective date of this charter and (~~which~~) that are not inconsistent with this charter shall continue in effect until they are amended, repealed or superseded in accordance with the provisions of this charter. All rights, claims, actions, orders, obligations, proceedings and contracts existing on (~~the effective date of this charter~~) May 1, 1969, shall not be affected by the adoption of this charter.

Section 350.20.30 repealed. Section 350.20.30 of the King County Charter, "Metropolitan Services Department Transitory Provisions," is hereby repealed.

Section 900 repealed. Section 900 of the King County Charter, "Effective Date and Elections," is hereby repealed.

Section 910 repealed. Section 910 of the King County Charter, "Councilman Districts," is hereby repealed.

Section 920 repealed. Section 920 of the King County Charter, "Administrative Offices and Executive Department," is hereby repealed.

Section 920.10 repealed. Section 920.10 of the King County Charter, "Administrative Offices," is hereby repealed.

Section 920.10.10 repealed. Section 920.10.10 of the King County Charter, "Office of Budgets and Accounts," is hereby repealed.

Section 920.10.20 repealed. Section 920.10.20 of the King County Charter, "Office of Personnel," is hereby repealed.

Section 920.10.30 repealed. Section 920.10.30 of the King County Charter, "Office of Systems Services," is hereby repealed.

Section 920.10.40 repealed. Section 920.10.40 of the King County Charter, "Office of Property and Purchasing," is hereby repealed.

Section 920.20 repealed. Section 920.20 of the King County Charter, "Executive Departments," is hereby repealed.

Section 920.20.10 repealed. Section 920.20.10 of the King County Charter, "Department of Public Works, Utilities and Transportation," is hereby repealed.

Section 920.20.20 repealed. Section 920.20.20 of the King County Charter, "Department of Public Safety," is hereby repealed.

Section 920.20.30 repealed. Section 920.20.30 of the King County Charter, "Department of Public Health," is hereby repealed.

Section 920.20.40 repealed. Section 920.20.40 of the King County Charter, "Department of Records and Elections," is hereby repealed.

Section 920.20.50 repealed. Section 920.20.50, "Department of Finance," is hereby repealed.

Section 920.20.60 repealed. Section 920.20.60 of the King County Charter, "Department of Parks," is hereby repealed.

Section 920.20.70 repealed. Section 920.20.70 of the King County Charter, "Department of Planning," is hereby repealed.

Section 920.20.80 repealed. Section 920.20.80 of the King County Charter, "Department of Building," is hereby repealed.

Section 920.30 repealed. Section 920.30 of the King County Charter, "Modification of Administrative Offices and Executive Departments," is hereby repealed.

Section 930 repealed. Section 930 of the King County Charter, "County Commissioners," is hereby repealed.

Section 940 repealed. Section 940 of the King County Charter, "County Assessor," is hereby repealed.

Section 950 repealed. Section 950 of the King County Charter, "Commencement and Terms of Office," is hereby repealed.

Section 960 repealed. Section 960 of the King County Charter, "Compensation," is hereby repealed.

Section 970 repealed. Section 970, "The Personnel System," is hereby repealed.

Section 970.10 repealed. Section 970.10, "Personnel Board Members," is hereby repealed.

Section 970.30 repealed. Section 970.30 of the King County Charter, "Elective County Officers," is hereby repealed.

Section 970.40 repealed. Section 970.40, "County Employees," is hereby repealed.

Section 970.50 repealed. Section 970.50 of the King County Charter, "Sheriff's Civil Service System," is hereby repealed.

Section 980 repealed. Section 980 of the King County Charter, "Board of Appeals," is hereby repealed.

SECTION 2. The clerk of the council shall certify the proposition to the county elections director, in substantially the following form, with such additions, deletions or modifications as may be required by the prosecuting attorney for the proposition listed below:

Shall the King County Charter be amended to remove no longer relevant transitional language relating to the county's prior transition to a home rule charter and metropolitan form of government?

Ordinance 16484 was introduced on 4/13/2009 and passed by the Metropolitan King County Council on 4/27/2009, by the following vote:

Yes: 7 - Mr. Constantine, Mr. Ferguson, Ms. Lambert, Mr. von Reichbauer, Mr. Phillips, Mr. Gossett and Ms. Patterson
No: 0
Excused: 2 - Ms. Hague and Mr. Dunn

Proposed No. 2009-0282.2 **Sponsors** Ferguson

AN ORDINANCE proposing to repeal Section 475 of the King County Charter pertaining to work programs and allotments, and submitting the same to the voters of the county for their ratification or rejection at the November 2009 general election.

BE IT ORDAINED BY THE COUNCIL OF KING COUNTY:

SECTION 1. There shall be submitted to the voters of King County for their approval and ratification or rejection, at the next general election to be held in this county occurring more than forty-five days after the enactment of this ordinance, an amendment to the King County Charter repealing Section 475, as set forth herein:

Section 475 repealed. Section 475 of the King County Charter, "Work Programs and Allotments," is hereby repealed.

SECTION 2. The clerk of the council shall certify the proposition to the county elections director, in substantially the following form, with such additions, deletions or modifications as may be required by the prosecuting attorney:

Shall the King County Charter be amended to repeal Section 475, "Work Programs and Allotments"?

SECTION 3. The repeal of Section 475 of the King County Charter is not intended to affect existing legislation or to limit the power of the council to adopt legislation regarding the matters that were addressed in Section 475.

Ordinance 16546 was introduced on 4/20/2009 and passed by the Metropolitan King County Council on 6/8/2009, by the following vote:

Yes: 9 - Mr. Constantine, Mr. Ferguson, Ms. Hague, Ms. Lambert, Mr. von Reichbauer, Mr. Gossett, Mr. Phillips, Ms. Patterson and Mr. Dunn
No: 0
Excused: 0

King County Charter Amendment No. 3
Ordinance 16547 as amended by Ordinance 16599

Proposed No. 2009-0348.2 **Sponsors** Ferguson and Lambert

AN ORDINANCE proposing an amendment to Section 800 of the King County Charter, to provide for council confirmation of charter review commission members and to require council consideration of charter review commission recommended charter amendments; and submitting the same to the voters of the county for their ratification or rejection at the November 2009 general election.

BE IT ORDAINED BY THE COUNCIL OF KING COUNTY:

SECTION 1. There shall be submitted to the voters of King County for their approval and ratification or rejection, at the next general election to be held in this county occurring more than forty-five days after the enactment of this ordinance, an amendment to Section 800 of the King County Charter as set forth herein:

Section 800 Charter Review and Amendments.

At least every ten years after the adoption of this charter, the county executive shall appoint a citizen commission of not less than fifteen members whose mandate shall be to review the charter and present, or cause to be presented, to the county council a written report recommending those amendments, if any, which should be made to the charter. Appointees shall be subject to confirmation by a majority of the county council. This citizen commission shall be composed of at least one representative from each of the county council districts. The county council shall consider the commission's report and recommendations and decide at an open public meeting how to proceed on each of the commission's recommended charter amendments, as provided by ordinance.

The county council may propose amendments to this charter by enacting an ordinance to submit a proposed amendment to the voters

of the county at the next general election occurring more than forty-five days after the enactment of the ordinance. An ordinance proposing an amendment to the charter shall not be subject to the veto power of the county executive. Publication of a proposed amendment and notice of its submission to the voters of the county shall be made in accordance with the state constitution and general law. If the proposed amendment is approved by a majority of the voters voting on the issue, it shall become effective ten days after the results of the election are certified unless a later date is specified in the amendment.

SECTION 2. The clerk of the council shall certify the proposition to the county elections director, in substantially the following form, with such additions, deletions or modifications as may be required by the prosecuting attorney:

Shall the King County Charter be amended to provide for council confirmation of charter review commission members and to require public council consideration of the charter review commission's recommended charter amendments?

Ordinance 16547 was introduced on 6/1/2009 and passed by the Metropolitan King County Council on 6/8/2009, by the following vote:

Yes: 9 - Mr. Constantine, Mr. Ferguson, Ms. Hague, Ms. Lambert, Mr. von Reichbauer, Mr. Gossett, Mr. Phillips, Ms. Patterson and Mr. Dunn
No: 0
Excused: 0

King County Charter Amendment No. 4
Ordinance 16600

Proposed No. 2009-0245.2 **Sponsors** Ferguson, Phillips, Hague, Patterson, Constantine, Dunn and Lambert

AN ORDINANCE proposing an amendment to the King County Charter; providing enhanced protection for certain high conservation value properties that are designated by a supermajority vote of the council, by prohibiting the county from conveying or relinquishing its interest in those properties or authorizing their expanded use, except in specified circumstances; adding a new Section 897 to the King County Charter, and submitting the same to the voters of the county for their ratification or rejection at the November 2009 general election.

BE IT ORDAINED BY THE COUNCIL OF KING COUNTY:

SECTION 1. Findings:

A. King County has acquired interests in open space properties in the form of fee simple ownership, conservation easements and development rights. The county has done so using funds from various funding sources, including conservation futures taxes, Forward Thrust, real estate excise taxes, surface water management fees, the river improvement fund, the salmon recovery funding board, the interagency committee for outdoor recreation, voter-approved open space bond funds and state and federal conservation-oriented grants.

B. The primary purposes of acquiring open space properties are to conserve, preserve, protect, or enhance natural or scenic resources, timberland devoted primarily to the growth and harvest of timber for commercial purposes, streams, rivers, wetlands, soils, beaches, tidal marshes, fish or wildlife habitat, water quality, passive recreational opportunities, visual quality along highway, road and street corridors, and scenic vistas for current and future generations of King County residents.

C. Preserving the character of open space properties also reduces urban sprawl, provides natural corridors in urban areas, and serves to mitigate the effects of human activities that contribute to climate change.

D. The county council wishes to provide enhanced protection of certain high conservation value, open space properties that King County currently owns, or in which the county owns a conservation easement or

98 King County Charter Amendment No. 4
Ordinance 16600 (continued)

development rights, without increasing current restrictions on the use of those properties or requiring the county to purchase additional properties.

E. An effective means of providing enhanced protection is to require approval by a county council supermajority of at least seven affirmative votes (out of nine councilmembers) before the county may transfer or relinquish its interest in those properties or authorize their expanded use beyond what was permissible when the county acquired them, except in specified circumstances, and before properties are added to, or removed from, the inventory of protected properties.

SECTION 2. There shall be submitted to the voters of King County for their approval and ratification or rejection, at the next general election to be held in this county occurring more than forty-five days after the enactment of this ordinance, the addition of a new Section 897 to the King County Charter to read as follows:

Section 897. High Conservation Value Properties.

The county council may, by a minimum of seven affirmative votes, adopt an ordinance establishing an inventory of those high conservation value properties that are to be preserved under the terms of this section. Such an ordinance may be adopted before, on, or after the effective date of this section. The inventory shall include only properties in which the county has a real property interest. The inventory may not be modified by the addition or removal of a property except by an ordinance adopted by a minimum of seven affirmative votes and including specific findings of fact supporting the modification. An ordinance removing a property from the inventory shall include findings of fact that one or more of the following factors exist: (1) the property no longer provides the open space values initially contemplated, for specific reasons set forth in the ordinance; (2) maintaining the property in public ownership is no longer practical, for specific reasons set forth in the ordinance; or (3) open space values will be enhanced by substituting the property interest for another property interest. At least twenty-eight days after the introduction of a proposed ordinance modifying the inventory, except an emergency ordinance, and prior to its adoption, the county council shall hold a public hearing after due notice to consider the proposed ordinance. Before the county council adopts an ordinance modifying the inventory, the chair or other designee of the county council shall make a reasonable effort to consult with the county executive about the modification. Seven affirmative votes are required to override the veto of an ordinance establishing or modifying the inventory following the effective date of this section.

The county shall not convey or relinquish its interest in an inventoried property or authorize an inventoried property to be converted to a use that was not permissible when the county acquired its interest, as evidenced by deed, easement, covenant, contract or funding source requirements, except that this section shall not prevent: the conveyance of the county's interest in an inventoried property to another government or to a non-profit nature conservancy corporation or association as defined in RCW 84.34.250, as currently adopted or hereafter amended; the conveyance of the county's interest in an inventoried property under the lawful threat or exercise of eminent domain; the grant of an easement, license, franchise or use agreement for utilities or other activities compatible with use restrictions in place when the county acquired its interest; or the use of an inventoried property for habitat restoration, flood control, low-impact public amenities or regionally significant public facilities developed for purposes related to the conservation values of the property, road or utility projects or emergency projects necessary to protect public health, welfare or safety. This section shall not affect any contractual obligations entered into as part of the county's acquisition of an interest in an inventoried property.

SECTION 2. The clerk of the council shall certify the proposition to the county elections director, in substantially the following form, with such additions, deletions or modifications as may be required by the prosecuting attorney:

Shall the King County Charter be amended to add a new Section 897 that provides enhanced protection for certain high conservation value county properties that are designated by a supermajority vote of the council, by prohibiting the county from conveying or relinquishing its interest in those properties or authorizing their expanded use beyond what was permissible when the county acquired them, except in specified circumstances?

Ordinance 16600 was introduced on 4/6/2009 and passed by the Metropolitan King County Council on 7/20/2009, by the following vote:

Yes: 9 - Mr. Constantine, Mr. Ferguson, Ms. Hague, Ms. Lambert, Mr. von Reichbauer, Mr. Gossett, Mr. Phillips, Ms. Patterson and Mr. Dunn

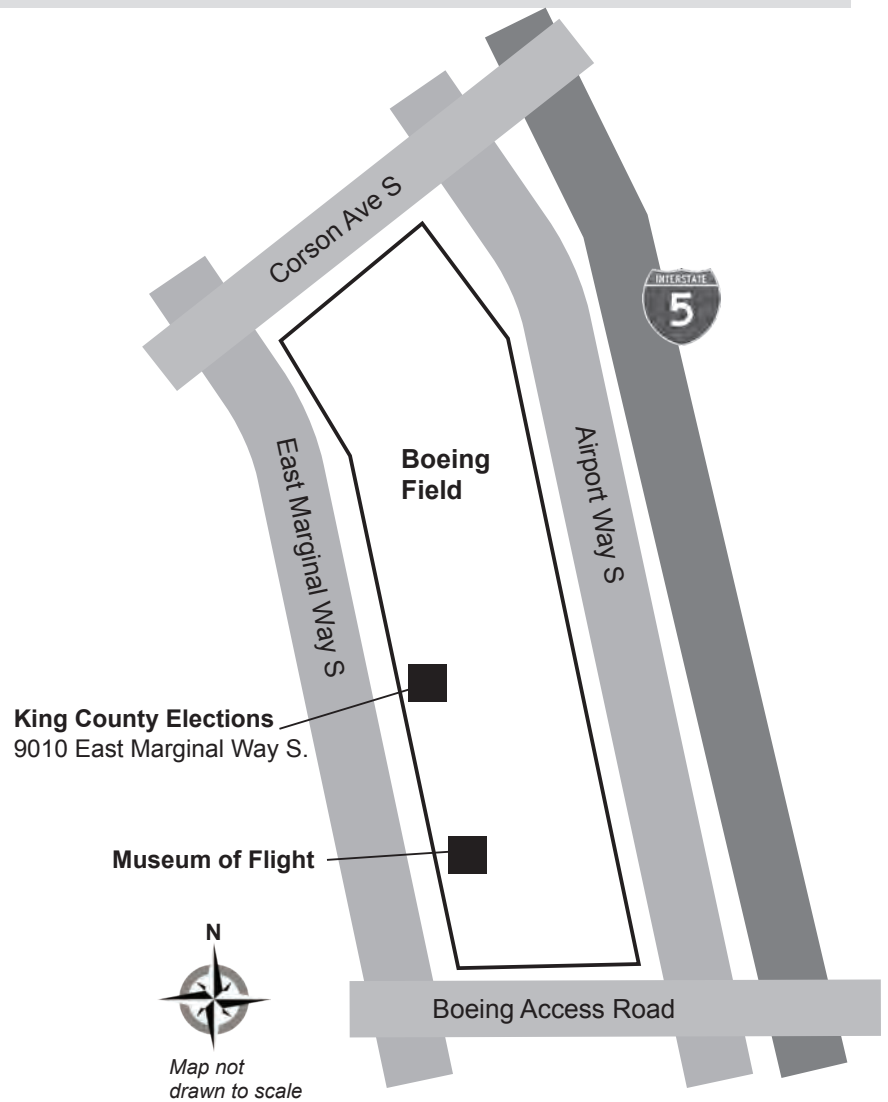
No: 0

Excused: 0

We moved!

As a response to possible flooding associated with needed repairs at the Howard Hanson Dam, King County Elections has temporarily relocated all operations to a new location in Tukwila, near Boeing Field.

The new facility offers accessible voting during all elections.



King County Elections

- 9010 East Marginal Way S, Tukwila, 98108
- Open weekdays from 8:30 a.m. to 4:30 p.m.
- 206-296-VOTE (8683)

King County now votes by mail

Your ballot will come soon in the mail.

All registered voters will be mailed a ballot for this and all future elections. Voters will have plenty of time to study the candidates and issues and return their ballot by mail or at a secured, 24-hour ballot drop box.

King County voters have been successfully voting by mail since February 2009. Voted ballots must be received at a designated drop box by 8 p.m. on election night, November 3, or be postmarked by the U.S. Postal Service on or before election day.

Track your ballot online!

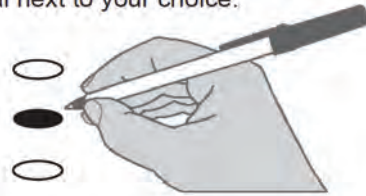
Voters can use the King County Elections' Web site to track their ballot's progress online, as it is processed.

Learn more at www.kingcounty.gov/elections.

Instructions

Making selections

Use a dark pen to completely fill in the oval next to your choice.



! Do not cut, tear or damage ballot.

Returning the ballot

Insert completed ballot into security envelope.



Insert security envelope containing completed ballot into return envelope. Sign the oath on the return envelope.



Optional

Write-in

To vote for a write-in candidate, write the name and darken the oval.



Making corrections

To make a correction, draw a line through the candidate's name. You then have the option of making another choice.



vote!

Voting in the November 3 General Election

101

24-hour ballot drop boxes

Return your ballot without postage at one of the ballot drop boxes located throughout the county by 8 p.m. on Election Day, November 3.

King County locations

Auburn Library

1102 Auburn Wy S, 98002

Library Connection@Crossroads

(Crossroads Shopping Center)
15600 NE 8th St, Bellevue 98008

Black Diamond Library

24707 Roberts Dr, 98010

Covington Library

27100 164th Ave SE, 98042

Des Moines Library

21620 11th Ave S, 98198

Earlington Business Center

919 SW Grady Wy, Renton 98057

Fall City Library

33415 SE 42nd Pl, 98024

Federal Way Library

848 S 320th St, 98003

Kent Regional Library

212 2nd Ave N, 98032

Lake Forest Park Library

17171 Bothell Wy NE, 98155

White Center Library

11220 16th Ave SW, Seattle 98146

Woodinville Library

17105 Avondale Rd NE, 98072

Seattle location

King County Administration Building

500 4th Ave, 98104

Seattle Neighborhood Service Centers

Ballard

5604 22nd Ave NW, 98107

Lake City

12525 28th Ave NE, 98125

Central

2301 S Jackson, 98144

Southeast

3815 S Othello St, 98118

Delridge

5405 Delridge Wy SW, 98106

University

4534 University Wy NE, 98105

Accessible voting centers

Voters with disabilities can cast a private and independent ballot at the following locations, dates and times.

King County Elections-- New location!

9010 East Marginal Way S, Tukwila, 98108

Weekdays, October 14 – November 2:

8:30 a.m. – 4:30 p.m.

Saturday, October 31: 10 a.m. – 5 p.m.

Tuesday, November 3: 7 a.m. – 8 p.m.

Bellevue City Hall 450 110th Avenue NE, Bellevue, 98009

Seattle, Union Station 401 S Jackson St, Seattle, 98104

Friday, October 30: 10 a.m. – 5 p.m.

Saturday, October 31: 10 a.m. – 5 p.m.

Monday, November 2: 10 a.m. – 5 p.m.

Tuesday, November 3: 7 a.m. – 8 p.m.

Frequently asked questions: vote by mail



What is vote by mail?

Vote by mail is a method of distributing ballots in an election. Instead of using traditional polling places where voters go to cast ballots, a ballot is mailed to each registered voter. The ballot is then voted and returned to King County to be counted.

What do I have to do?

If your address and registration is current, your ballot packet will automatically be mailed to you. Once you vote the ballot, place it in the security envelope and seal it in the return envelope. Be sure to read and sign the voter oath on the return envelope.

When must my voted ballot be returned?

The voted ballot must be received at a designated drop box by 8 p.m. on election night, November 3, or be postmarked by the U.S. Postal Service on or before election day.

What if I make a mistake?

If you make a mistake, correct it using the instructions on the ballot.

How do I know if my ballot is received?

Visit www.kingcounty.gov/elections to track your ballot at several points as it is processed.

What if I lose my ballot?

If you lose your ballot, call King County Elections at 206-296-8683 and request a replacement ballot. Your ballot has been cast as soon as you deposit it in the mailbox or at a drop site. After that, you cannot receive a new ballot to re-vote.

What if my ballot doesn't come?

If you have not received your ballot by October 23, call us and we will mail you a replacement ballot.

Will my vote still count if I forget to put my ballot into the security envelope?

Yes, your ballot will still be counted.

When will election results be known?

Ballot counting cannot begin until election day. Initial results are released after 8 p.m. on election night and will be updated once a day in the days that follow until all ballots have been counted. Final certification of results will occur on November 24.

