



King County

International Airport Boeing Field

7277 Perimeter Road S., Seattle WA 98108

Meeting: Roundtable Advisory Committee
Date: Monday, May 13, 2024
Time: 5:00 – 6:30 pm
Location: Zoom Meeting /Terminal 110 Conference Room

A G E N D A

1. Welcome (Erik Utter, Chair) 5:00 pm
2. Public Comment
Public comments are limited to 2 minutes each speaker for a total of 10 minutes.
3. Roll Call
4. Approval of April Meeting Minutes
5. Chair's Report: (Erik Utter)
 - Roundtable Facilitator Discussion
6. Airport Updates:
 - Strategic Plan Update (Matt Sykora)
 - Community Collaboration Plan Feedback (Matt Sykora)
 - Vision 2045 and Part 150 Public Participation (Matt Sykora)
 - Summer Construction Update (Derek Doell)
 - FAA Part 139 Cert Inspection (Sean Moran)
 - Microsoft CEO Summit (Sean Moran)
 - U.S. Army Operation Armadillo Exercise (Sean Moran)
 - Roundtable Vacancies (Beacon Hill/South Park) (Dave Decoteau/Ellen Knowlen)
7. New Business:
8. Adjourn 6:30 pm

Zoom Best Practices:

* Please mute your microphone when you are not speaking. If a question comes up during the meeting, please use the chat feature so it can be addressed.



**King County
International Airport
Boeing Field**

Department of Executive Services -- Airport Division
Roundtable Meeting Minutes for April 8, 2024

5:10 p.m. Meeting called to order by John Parrott

1. Welcome (John Parrott)
2. Roll Call (Ellen Knowlen)
3. Approval of Minutes – We had a quorum; March amended meeting minutes were approved.
4. Public comment. No public comment.
5. Airport Updates:
 - i. Continued Roundtable Facilitator Discussion (John Parrott/Ali Lee): John opened this discussion by asked the members for their thoughts on the facilitators that they met at the March meeting. This was followed by several members sharing their thoughts on this issue and comments agreeing to bring in a facilitator to help the committee be more proactive but also define/identify what things they want the facilitator to address the items from the auditor’s report. John shared that to begin with the facilitator could work with the leadership team on the agenda and leading the meetings but then in a few months look at other ways to use the facilitator’s services. The group had asked for a short interview session with the facilitator, but Matt shared that the facilitator would have to be under contract, he suggested a draft scope of work that would allow funds to support this, but this is a 30-day process. Ali asked the committee for a motion to setup a subcommittee, Holly suggested the subcommittee work with airport staff to draft the scope and how they would use the current proposed facilitator. A vote was taken and the Ayes passed the motion. Members who would like to be on the subcommittee should send their name to Ellen and if they have questions for the facilitator to send that information also.
 - ii. AAAE Airport 101 Virtual Training Feedback (McIntyre/Moninski): Ken Moninski enjoyed the training and learning about the Airport side of things. Mark McIntyre was interested in the grant processes that were discussed and thought it was well worth attending. Both members highly recommended other Roundtable members take this training.
 - iii. New Council Members Airport Tour (John Parrott): On April 1, new King County Council members Mosqueda and Barón were given an airfield tour, they learned about the U.S. Immigration and Custom Enforcement (ICE) flights, and the overall operations around the airport. This included the details on the airport and its economic impact. The airport sits on over 600 acres and 18,000 family wage/union jobs are facilitated from here, along with a staff of 75 King County employees.
 - iv. New Managing Engineer – Derek Doell (John Parrott): John introduced Derek who comes from the SeaTac Airport Design section, he is a civil engineer and prior consultant.

- v. Strategic Plan Update (Matt Sykora): The goals and objectives workshop was held with the Airport's leadership team, this will be followed by separate sessions with the Roundtable committee and the local communities in May.
- vi. 43rd Annual Women in Trades Fair (John Parrott): On Friday, May 3, the Airport will be manning their annual booth at the event and will have staff participating. <https://www.wawomenintrades.com/trades-fair>
- vii. NW Aviation Conference and Tradeshow Update (Sean Moran): Airport staff attend this yearly event, manning a booth and sharing construction updates with attendees.
- viii. Airport Noise Update (Sean Moran): Sean shared that the Airport continues to monitor noise measurements, two additional noise monitors will be installed this year, and this information will be available on the Airport's website.
- ix. Community Collaboration Plan Feedback (Matt Sykora): Matt shared that the community collaboration plan had been forwarded to the Roundtable members and he was asking for their feedback and recommendations on the document.
- x. Vision 2045 and Part 150 Public Participation (Matt Sykora): Matt shared that work on the final stages of the project advisory committee is moving forward and the Airport will be sharing the updates to the local communities and tenants. These will be quarterly meetings covering major milestones.
- xi. Summer Construction Update (Matt Sykora): The Airport has a lot of construction projects planned for this summer; repaving the secondary runway, realigning the Alpha 4 intersection (late May or early June), repaving the Alpha 11 intersection which will tie in with the large runway closure, along with the stormwater project in the runway safety area. There are scheduled safety improvements on the west side taxiways at Bravo 1, Bravo 5, and Bravo 10, and runway guide lights improvements. Stormwater pipes on the west side of Taxiway Bravo will be replaced. Also, UPS will be installing an employee parking lot and realigning the airport access road to the stop light.

6. Chair's Report (Ali Lee):

- i. Ali asked that the community collaboration plan be discussed during the May meeting. The file was sent out in the April meeting materials, please check your Inbox emails for the document or contact Ellen and she can send it to the members.

7. New Business: None.

8. 6:25 pm Motion to Adjourn.

This meeting was attended via Zoom and in person.

Roundtable members in attendance: Ali Lee, Kelly Ronan-Hafner, Holly Krejci, Morgan Kaivo, Matt Hayes, Lisa Krober, Evan Nelson, Ryan Tomasich, Mark McIntyre, Ed Lutgen, Ken Moninski, and Takashi Nelson

Roundtable excused members: Erik Utter

KCIA staff in attendance: John Parrott, Chief Youngblood, Derek Doell, Matt Sykora, Lorenzo Clara, Sean Moran, Gil White, Ginny Justiniano, and Ellen Knowlen

DES staff in attendance: Lorraine Patterson-Harris, Barbara Ramey

Public guests in attendance: Carmela Ennis, Stephen Ratzlaff, Tim Barnes, Tyler Pichette, Rosemary Brester, Brad Schuster

This meeting was audio recorded.

20
24

COMMUNITY COLLABORATION PLAN

Draft



King County

International Airport Boeing Field

Table of Contents

About the Airport	1
Airport Boundary Map	2
Community Demographics	3/4/5
Languages Spoken Around KCIA	6
Community Collaboration Plan Objectives	7
Community Engagement	8
Community Engagement in KCIA Projects	9
KCIA Standard Project Development	10/11
Project Notification	12
Community Working Groups	13
Get Involved with KCIA	14
Media Inquiries	15
Website Links	16

Draft



King County

International Airport Boeing Field

Acronyms and Abbreviations

AC: Advisory Circular

ACAP: Airport Carbon Accreditation Program

ARFF: Aircraft Rescue and Fire Fighting

CAA: Civil Aeronautics Administration

CAB: Civil Aeronautics Board

CFR: Code of Federal Regulations

FAA: Federal Aviation Administration

FOD: Foreign Object Debris

GA: General Aviation

KCIA: King County International Airport

NOTAMs: Notice to Air Missions

NPIAS: National Plan of Integrated Airport Systems

PIO: Public Information Officer

SEA: Seattle - Tacoma International Airport

UNICOM: Universal Communications

VFR: Visual Flight Rules

Draft



King County

International Airport Boeing Field

About the Airport

In 1928, voters living in King County approved a \$950,000 plan to build the region's first municipal airport.

The King County International Airport Boeing Field (KCIA) began its operations in 1928. KCIA served as Seattle's main passenger airport from 1928 until 1944, when the Seattle - Tacoma International Airport (SEA) opened.

The Airport played a key role in World War II (WWII). On December 6, 1941, the airport was taken over by the United States Government due to its strategic location. There was a 24-hour around the clock schedule at KCIA with the goal of building B-17 and B-29 bombers to aid efforts in WWII. More than 7000 B-17 bombers flew from KCIA to serve in WWII. Federal Government occupation lasted until 1943.

After the last major passenger service left KCIA for SEA, the airport started to shift and have a major focus on General Aviation (GA). Today, KCIA is home to 383 based aircraft and is part of the FAA's National Plan of Intergrated Airport Systems (NPIAS). The airport serves all sizes and types of aircraft, from commercial to recreational.

KCIA supports \$3.5 billion in local businesses, which supports more than 16,000 jobs. This creates \$2 billion in labor income for King County. The airport has a wide variety of tenants, and these tenants support more than 5,000 jobs in the regional economy. The airport is also home to three fixed-base operators (Modern Aviation, Signature Flight Support, and Skyservice), and several small airlines.

Airport Leadership:

John Parrott, AAE - Director

David Decoteau, AAE, USAP - Deputy Director



Community Demographics

Population of communities around the airport:

Communities	Population
Allentown, WA	5,161
Beacon Hill, WA	2,122
Georgetown, WA	1,949
SeaTac, WA	30,927
South Park, WA	23,759
Tukwila, WA	21,569
White Center, WA	15,479

Draft

Community Demographics

A diverse community demographic is crucial as it encourages inclusivity and promotes a sense of belonging.

Racial Demographics in Allentown:

American Indian & Alaska Native: 2.7%
Asian: 22.7%
Black or African American: 14.2%
Hispanic or Latino: 15.8%
Native Hawaiian & Pacific Islander: 6.2%
White: 30.3%
Two or More Races: 3.2%
Other: 4.8%

Racial Demographics in Beacon Hill:

American Indian & Alaska Native: 0.1%
Asian: 45.5%
Black or African American: 11.9%
Hispanic or Latino: 9.6%
Native Hawaiian & Pacific Islander: 0.4%
White: 27.5%
Two or More Races: 5.1%
Other: 0%

Racial Demographics in Georgetown:

American Indian & Alaska Native: 1.9%
Asian: 11%
Black or African American: 1.9%
Hispanic or Latino: 16.9%
Native Hawaiian & Pacific Islander: 0%
White: 65.8%
Two or More Races: 2.5%
Other: 0%

Racial Demographics in SeaTac:

American Indian & Alaska Native: 0.7%
Asian: 16.2%
Black or African American: 24.3%
Hispanic or Latino: 21.1%
Native Hawaiian & Pacific Islander: 3.2%
White: 29.8%
Two or More Races: 7.6%
Other: 0.24%

Draft



Community Demographics

A diverse community demographic is crucial as it encourages inclusivity and promotes a sense of belonging.

Racial Demographics in South Park:

American Indian & Alaska Native: 0.7%
Asian: 11.8%
Black or African American: 4.3%
Hispanic or Latino: 46.3%
Native Hawaiian & Pacific Islander: 5.6%
White: 26.2%
Two or More Races: 5%
Other: 0%

Racial Demographics in Tukwila:

American Indian & Alaska Native: 1%
Asian: 24.4%
Black or African American: 17.4%
Hispanic or Latino: 22.2%
Native Hawaiian & Pacific Islander: 3.4%
White: 31.8%
Two or More Races: 7.1%
Other: 9%

Racial Demographics in White Center:

American Indian & Alaska Native: 1%
Asian: 21.7%
Black or African American: 10%
Hispanic or Latino: 26%
Native Hawaiian & Pacific Islander: 0%
White: 37%
Two or More Races: 5%
Other: 1%

Top Languages Spoken Around the Airport:

Amharic
Arabic
Chinese (Simplified & Traditional)
English
Mandarin
Spanish
Tagalog
Vietnamese

Draft

Languages Spoken Around KCIA

Recognizing the diversity of languages in our communities promotes cultural inclusivity and enables effective communication with a wider range of community members.

Top Languages Spoken Around the Airport

- Chinese (Simplified & Traditional)
- English
- Khmer
- Spanish
- Tagalog
- Vietnamese

Draft

Community Collaboration Plan Objectives

KCIA aims to facilitate effective communication between the airport and the communities it serves.

Enhancing Communication: KCIA wants to facilitate effective and transparent communication between the airport and the diverse communities around the airport. Our goal is to ensure that important information that impacts our communities is relayed.

Addressing Community Concerns: The airport wants to identify concerns and issues raised by our local communities such as noise, environmental impacts, and safety matters.

Building Trust and Relationships: The airport wants to foster a positive relationship with communities and interested parties around the airport in order to promote trust, collaboration, and a mutual understanding.

Seeking Community Input: We want to involve the community in the decision making around our planning and design process of our capital projects.

Promoting Transparency: KCIA strives to provide accessible and understandable information about our airport projects and initiatives to our communities.

Mitigating Impacts: The airport wants to work collaboratively with our communities and agencies to minimize impacts of our airport operations.

The objectives of our Community Participation Plan aim to foster an inclusive and cooperative relationship between the airport and the surrounding communities. KCIA will review and update the plan as needed, and if you have any suggestions regarding the plan, you can email us at KciaCommunityOutreach@kingcounty.gov.

Community Engagement

Different ways to get involved.

Roundtable Advisory Committee: The Roundtable is an advisory board that makes recommendations to the airport's administrators, the King County Executive, and the King County Council. Its membership includes representatives of aviation-related businesses and communities interested in airport issues. These meetings are open to the public and have a public comment period as part of the agenda. To register for these meetings, please follow the [link](#).

Project-Specific Meetings: The airport plays a vital role in these communities, so we always want to inform community members about large airport projects. You can also use this [link](#) to let us know of future project-specific meetings.

Project Working Groups: KCIA utilizes working groups for specific capital projects around the airport. Project working groups are comprised of community members, and they are selected from the list of community members who have signed up through our community engagement sign-up [form](#).

Plane Talk Newsletter: Stay up to date with events and projects at the airport. The airport sends out a newsletter on the first Friday of each month. This is a great way to stay informed about what's happening at the airport. You can register for the newsletter at the following [link](#).

Community Meetings: Airport staff regularly attend community meetings. A list of airport staff meetings will be posted on the airport's website.

If you would like KCIA to attend any community events, please email us at KciaCommunityOutreach@kingcounty.gov.

Community Engagement in KCIA Projects

KCIA follows King County's guidance and determines where every project will fall on the community engagement continuum below during the pre-planning stage of the process.

Due to the heavily regulated nature of airports, most airport projects fall within County Informs, County Consults, or the County Engages in Dialogue. These projects will either be briefed to the round table or specific public meetings held depending on the total dollar value and type of project.

When projects fall in County and Community Work Together or Community Directs Action, the airport will develop community and tenant working groups for the projects. For these projects, the airport works to establish a charter for the project with the community and tenants who want to be more heavily involved in the project.

Draft

Levels of Engagement				
County Informs	County Consults	County engages in dialogue	County and community work together	Community directs action
King County initiates an effort, coordinates with departments and uses a variety of channels to inform community to take action	King County gathers information from the community to inform county-led interventions	King County engages community members to shape county priorities and plans	Community and King County share in decision-making to co-create solutions together	Community initiates and directs strategy and action with participation and technical assistance from King County
Characteristics of Engagement				
<ul style="list-style-type: none"> Primarily one-way channel of communication One interaction Term-limited to event Addresses immediate need of county and community 	<ul style="list-style-type: none"> Primarily one-way channel of communication One to multiple interactions Short to medium-term Shapes and informs county programs 	<ul style="list-style-type: none"> Two-way channel of communication Multiple interactions Medium to long-term Advancement of solutions to complex problems 	<ul style="list-style-type: none"> Two-way channel of communication Multiple interactions Medium to long-term Advancement of solutions to complex problems 	<ul style="list-style-type: none"> Two-way channel of communication Multiple interactions Medium to long-term Advancement of solutions to complex problems
Strategies				
Media releases, brochures, pamphlets, outreach to vulnerable populations, ethnic media contacts, translated information, staff outreach to residents, new and social media	Focus groups, interviews, community surveys	Forums, advisory boards, stakeholder involvement, coalitions, policy development and advocacy, including legislative briefings and testimony, workshops, community-wide events	Co-led community meetings, advisory boards, coalitions, and partnerships, policy development and advocacy, including legislative briefings and testimony	Community-led planning efforts, community-hosted forums, collaborative partnerships, coalitions, policy development and advocacy including legislative briefings and testimony

KCIA Standard Project Development

Phases of an Airport Capital Project

Pre-Planning: The major goal of this stage of project development is to determine if a conceptual project idea becomes viable and authorized. Pre-planning starts when a project is identified and ends when that project is added to the approved Biennium Budget. There are 5 steps to completing this phase.

- **Project Idea:** A project idea is submitted with a high-level scope of work and budget estimate. Each project will be evaluated by airport leadership to determine if the project should move forward to being a part of the airport Capital Improvement List.
- **Project Idea Approved:** Airport Leadership Approves a project and ranks it against other priorities on the airport's capital improvement list. Just because a project makes it on the list does not guarantee that it will be funded or constructed. As part of the approval process, an initial determination will be made on where the project falls on the community engagement continuum.
- **Agency Proposed Budget:** The Airport Leadership Team moves projects from the CIP Proposed Project List into the proposed budget to be funded as a CIP Project.
- **Executive Proposed Budget:** The County Executive reviews and submits the whole County's budget to the County council for approval.
- **Council Adopted Budget:** Only at this stage is a project approved to start.

Draft

KCIA Standard Project Development

Phases of an Airport Capital Project

Planning: This phase of the project involves reviewing different alternatives and evaluating compliance with all FAA standards. Depending on the type of project, a National Environmental Policy Act (NEPA) Determination will also be made. Some projects are just planning-level projects and conclude after this phase. It's during this phase that the final determination is made on where the project falls into the community engagement continuum and where the appropriate level of community and tenant engagement is proposed and budgeted.

Preliminary Design: Preliminary Design starts when a project's selective alternative is approved and ends when the project's baseline is approved. The project's selected alternative is moved to the 30% to 40% design level and establishes a project baseline scope, schedule, and budget.

- **Project Baseline:** means the scope, schedule, and budget set at the conclusion of the preliminary design phase when the preferred alternative has been selected, and the design has progressed adequately to make a reasonable and informed commitment. The project baseline is used as a basis for variance reporting and performance measurements for the entire project.

Final Design: The Final Design Phase of a project starts when the project's baseline is approved and ends when the project's design package is approved to be advertised.

Implementation: The Implementation Phase begins when the construction contract procurement process is initiated and ends when the contractor reaches substantial completion.

Project Close Out: Closeout begins when a Notice of Substantial Completion is issued and ends when all permitting, financial and grant reporting is complete, and project documents are archived.

Project Notification

Below is a table for how the county will engage the community and tenants if the project falls into one of the following categories on the King County Community Engagement Continuum

- County Informs
- County Consults
- County Engages in Dialogue

<p>Airport maintenance projects, New CIP Projects less than 1 million dollars, new technology projects that are less than 10 million dollars and all tenant-funded projects.</p> <p>Project Examples:</p> <ul style="list-style-type: none"> • Pavement Replacement • Storm Water Pipe Lining • Light Replacement • Tenant Hangar Construction 	<p>Written Notification</p> <p>This could be an email, Newsletter notice or a notice at the airport round table prior to the start of consution.</p>
<p>New capital airport projects between 1 - 5 million dollars.</p> <p>Project Examples:</p> <ul style="list-style-type: none"> • Installation of In-pavement Runway Guard Lights • Demolition of current building • Installation of Electric Vehicle Charging Stations 	<p>Airport staff will brief the Roundtable and provide project updates at monthly meetings.</p> <p>Updates will be provided during the project's pre-planning, planning, design, implementation, and close-out phases.</p>
<p>New projects over 5 million dollars and all airport funded projects over 10 million dollars.</p> <p>Project Example:</p> <ul style="list-style-type: none"> • Runway 14L/32R Rehabilitation • Runway 14R/ 32L Rehabilitation • Addition of New Airport Maintenance Building 	<p>Airport staff will notify the Airport Roundtable members and hold at least three specific project outreach meetings.</p> <p>Project Outreach Meetings will be held during the pre-planning process, early design, and after the final design but before implementation.</p>

Draft



Community Working Groups

For projects that fall into one of the following categories on the King County Community Engagement Continuum, a working group will be formed of both community members and airport tenants.

- County and Community Work together
- Community Directs Action

When a project falls into one of these categories and the gate committee approves it to be funded, airport staff will message all who have registered via the following link to let airport staff know they are interested in serving on a project working group.

In the first email, airport staff will send high-level information about the project and its anticipated duration, along with instructions on what to do if you are interested in being part of that specific project working group.

A charter will be created once the project's working group is formed, but before the project officially kicks off. In the charter, a project budget will be established by airport staff.

At the working group's conclusion, community members and airport staff will present their findings and recommendations to airport leadership, who will determine if additional steps should be taken.

Due to FAA regulations, the airport cannot pay community members for being in a working group or attending working group meetings.

An example of a recently completed working group would be the airport's Northwest Fence Line Replacement Project, where community members and staff members worked together to determine the best type of fence that runs along some of the Georgetown neighborhoods while still being compliant with FAA standards. You can find more about that project [here](#).

Get Involved with KCIA

It's important for us to provide clear ways for our communities to contact us in order to foster open communication, address concerns, provide support, and build strong relationships with those we serve.

Ways to Get Involved	Information
Front Desk Phone Number	(206) 296-7380
24/7 Operations Phone Number	(206) 296-7334
Community Outreach Email	KciaCommunityOutreach@kingcounty.gov
Facebook	@KingCountyAirport
Instagram	@KingCountyAirport
King County International Airport Website	www.kingcounty.gov/airport
Airport Roundtable Advisory Committee	Join our monthly Roundtable Meetings
Careers at King County	Visit the King County Career Page
KCIA Plane Talk Newsletter	Subscribe to Plane Talk
Stay Informed on KCIA Projects	Sign up to be informed about future Airport Projects
Visit our Community Engagement Website	KCIA Community Engagement Website

Draft

Media Inquiries

For Media Inquiries, you can email KciaMedia@kingcounty.gov. You can also call (206) 263-9758 or (206) 409-7840 to get in touch with one of our Public Information Officers (PIO).

Draft

Website Links

(1): Airport Roundtable Advisory Committee:

<https://kingcounty.gov/services/airport/airport-roundtable.aspx>

(2): Stay Informed on the Planning and Designing of Capital Projects at BFI:

https://forms.office.com/Pages/ResponsePage.aspx?id=mgXlurvB210mZInLf6V1px71-TkD_Fu5KqUzpm8iOEVNUMFZEQ1hWQkNJT1pPVUNPUkZEUVJDMIFGNC4u

(3): Subscribe to Plane Talk:

<https://content.govdelivery.com/accounts/WAKING/bulletins/3800b08>

Draft



Thank you for supporting the
King County International Airport
Boeing Field
Draft

Contact

King County International Airport Boeing Field
7277 Perimeter Rd. S. Ste. 200
Seattle, WA 98108
(206) 296-7380

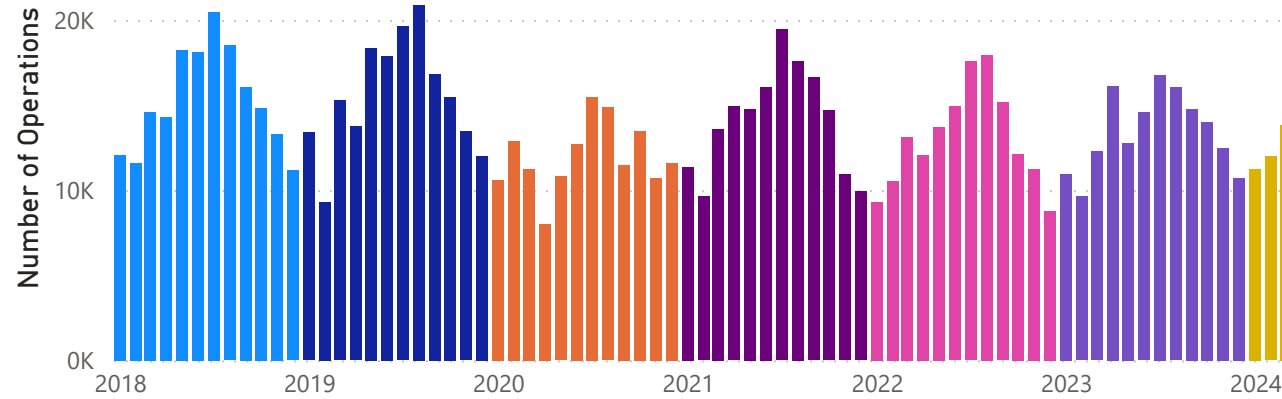
www.kingcounty.gov/airport
KciaCommunityOutreach@kingcounty.gov

Number	Name	PM	YTD Actuals	\$ Annual Variance	% Annual Variance	Key Activities - Current Quarter	Key Activities - Next Quarter	Closely Monitored Issues and Key Risks
1135085	RUNWAY 14L-32R REHAB	Miller	\$33,705		0%	Execute the construction contract, and contractor will mobilize to the site and begin site preparation and pavement demo.		If we continue to experience delays with central procurement & Permitting, the projects schedules will be delayed. If the projects schedule is delayed this will jeopardize our FAA funding. FAA has not committed any AIP discretionary funds to the project in writing. FAA has not previously submitted timely reviews, if timely responses are not received this could further delay the project. Current project forecast is roughly \$9m over the project appropriation, the difference between the forecast and appropriation is due to the addition of a PM Services, inflation, and additional scope items that were added by stakeholders at 30%. Invoices from RS&H have been severely delayed and they are roughly 11 months behind in billing. Ginny and I met with RS&H on 6/7/2023 to clarify their responsibilities and chart out a path to get back on track. RS&H will be required to submit monthly invoices for each month to catch up.
1139512	TAXIWAY B TOFA SAFTY CORR	Miller	\$2,940		0%	Execute contract and develop a critical path schedule with the consultant and begin design.		Coordination with tenants for work on their leaseholds will require the project team to incorporate the tenants standards into the project. If the tenant is not willing to coordinate or does not provide timely feedback the project could be delayed.
1141114	A11 CONNECTOR RECONST	Miller	\$29,765		0%	Open construction bids, evaluate the bids and execute the construction contract.		Central Procurement was delayed in reviewing the documents, and if this pattern continues it will delay the project. King County Permitting also has not started their review and if this trend continues could delay the project.
1141122	STRMWTR PIPE REPLCMT PH III	Dumaliang	-\$25,806		0%	Execute Construction and CM contracts. Notice to proceed and start of construction. Design Phase III is executed for CA and closeout.		Procurement schedule for rebid.
1141128	AIRPORT WAY STORMWATR INPUT	Dumaliang	\$9,206		0%	Start design process.		FAA NEPA review timeline will extend to next year. Design contract to be extended to March 2023..
1141154	CARBON ACCREDITATN STUDIES	Miller	\$2,021		0%	Finalize coordination with tenants and begin drafting the Level 3 certification docs.		KCIA has to continually demonstrate emission reductions, which is currently not shown in our emission trends.
1141164	AIRFD ELEC SYS UPGDE PH III	Dumaliang	-\$155,025		0%	Execute Construction and CM contracts. Notice to proceed and start of construction. Design Phase III is executed for CA and closeout.		Procurement process includes contract and CM services. These will need to be completed by 2Q 2024.
1141172	ASSET MGT FRAMEWORK	Dumaliang	\$1,287		0%	Complete Phase II Implementation Plan		Seeking feedback from leadership on priorities for implementation plan
1141350	STRMWTR FACLTY CLEANING	Dumaliang	\$0		0%	None		Review status of universal contract.
1141353	STRMWATR LINE/CB CLEANING	Dumaliang	\$0		0%	Conduct line cleaning and CCTV.		Work with Contracts on the use of the VPC contract.
1141355	SLIP 4 SOURCE CONTRL INVEST	Dumaliang	\$0		0%	Perform work.		None
1142941	ART PERMITTING	Khalili	\$15,549		0%	Support King County ART Permitting		NA
1143915	RUNWAY 14R-32L REHAB	Miller	\$2,197		0%	Execute both contracts, and work with consultants to develop a critical path schedule and begin work.		FAA ADO is required to review and approved the Scope and fee before the contract can be executed. This process can take months, which would delay the project. Timely responses from the FAA ADO are required.
1143917	WANG SITE REHAB	Miller	\$3,950		0%	Begin on-site activities		This project was originally planned for the 2026-27 budget and we need to appropriate additional funds to start the work now. The current plan is for FMD to take over project management and delivery. Managing this relationship will be key to the projects success

1143948	VISION 2045/PART 150 STUDY	Bartley	\$118,171		0%	Consultant finish Aviation Forecast and submit to FAA for review. Draft inventory submitted to airport start noise exposure maps start environmental considerations start agis survey work Start facilities requirements documentation	Final Forecast Chapter Final Inventory Chapter Continue noise exposure maps. Start Land use impact analysis Finish environmental inventory Finish agis survey work, continue data collection Start facilities requirements documentation Start Alternatives	Community and Tennent Engagement will be a major focus of this project. There will be high visibility with the Executive's Office and Council on this project. Will need to work closely with the FAA ADO on the aviation forecast and ALP approval to stick on schedule.
1146188	FSS HVAC SYS REPL & SOLAR	Miller	\$24,584		0%	Finalize the bid documents, evaluate the bids, and execute the construction contract.		Stakeholders have requested the design team to assess the feasibility of having the solar array feed the car chargers, the design team is currently reviewing this. This would cost the project additional funds and add additional days to the design schedule.
1146794	AIRPORT STRATEGIC PLAN	Bartley	\$1,547		0%	Mission Vision and Values workshops SWOT Analysis Desing Evaluation Framework	Community Meetings for draft and final documents	Tight schedule to meet all requirements and be delivered in close coordination with Vision 2045. There will be a lot of overlapping community engagement for both these projects at the same time.
1146861	PLANNING PRGM CIP ADMIN	Bartley	\$1,547		0%	Contract Management Budget Prep	Contract Management Budget Prep	Closing out old WOs and balancing work with new master WOs
1146863	LAP UPS AREA PNDING REMDTN	Khalili	\$3,392		0%	Construction Contracting will be starting end of May.		N/A
1146953	FAC SPU BACKFLOW	Khalili	\$14,994		0%	Construction Contract and start installation.		Water Shut down for couple of Hrs
1147071	SENSUS WATER METER INSTALL	Khalili	\$924		0%	Working with 3rd party to replace water meters		Delay from 3rd party installer

Total Flight Operations 2018 - Present

● 2018 Total ... ● 2019 Total ... ● 2020 Total ... ● 2021 Total ... ● 2022 Total ... ● 2023 Tot... ● 2024 Tot...

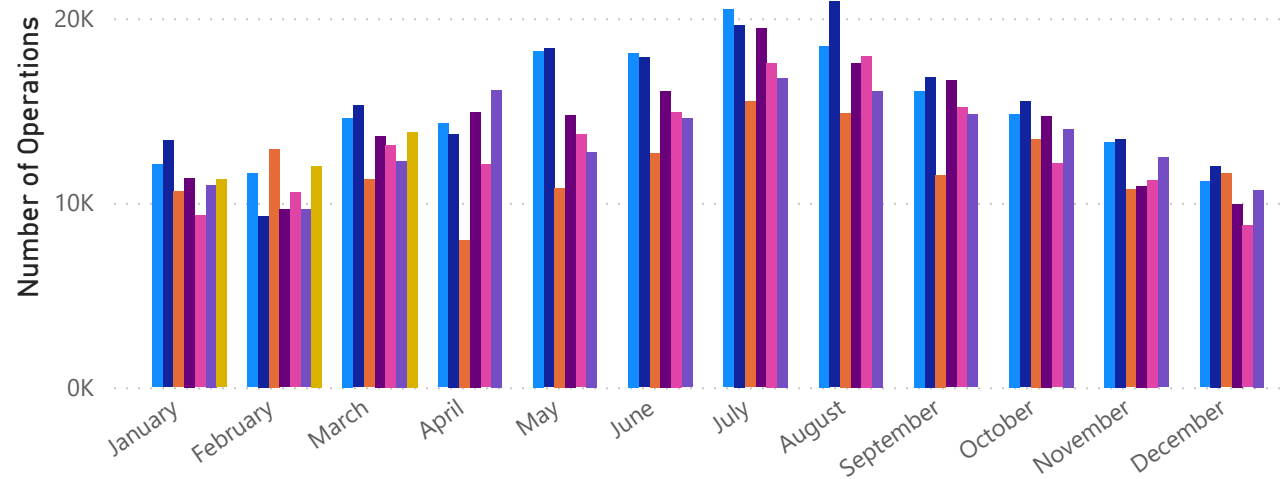


Total Flight Operations 2018 - Present

Month	2018 Total Operations	2019 Total Operations	2020 Total Operations	2021 Total Operations	2022 Total Operations	2023 Total Operations	2024 Total Operations
January	12,071	13,382	10,614	11,362	9,309	10,971	11262
February	11,591	9,287	12,908	9,635	10,556	9,634	11981
March	14,591	15,280	11,254	13,612	13,142	12,268	13846
April	14,303	13,740	7,996	14,925	12,067	16,106	
May	18,242	18,365	10,797	14,774	13,700	12,760	
June	18,133	17,876	12,715	16,072	14,919	14,562	
July	20,474	19,629	15,497	19,449	17,567	16,763	
August	18,506	20,903	14,869	17,575	17,955	16,045	
September	16,062	16,830	11,489	16,625	15,160	14,780	
October	14,828	15,486	13,467	14,686	12,126	14,003	
November	13,310	13,445	10,729	10,925	11,251	12,463	
December	11,157	12,005	11,581	9,929	8,770	10,698	
Total	183,268	186,228	143,916	169,569	156,522	161,053	37089

Total Flight Operations Comparison

● 2018 Total ... ● 2019 Total ... ● 2020 Total ... ● 2021 Total ... ● 2022 Total ... ● 2023 Tot... ● 2024 Tot...



Year

All

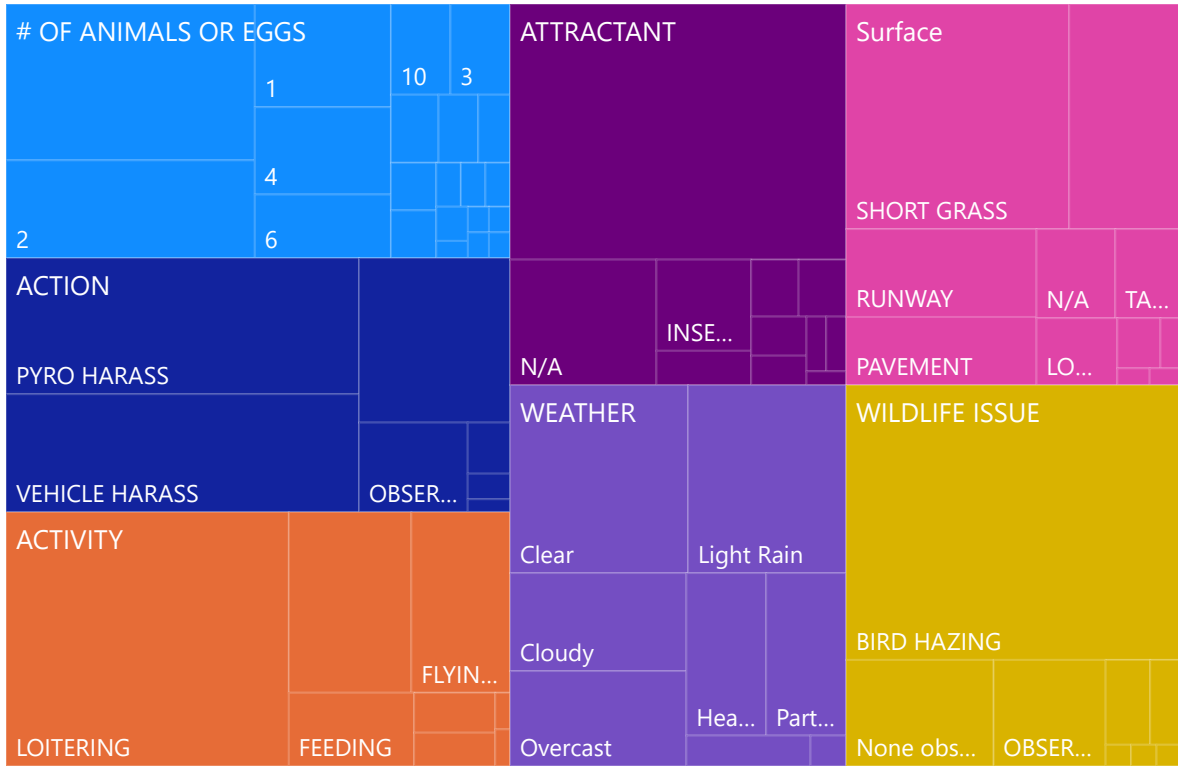
Quarter

All

Month

All

Count of REQUESTID by CUSTFIELDNAME and CUSTFIELDVALUE



INITIATEDBY CATEGORY CUSTFIELDNAME

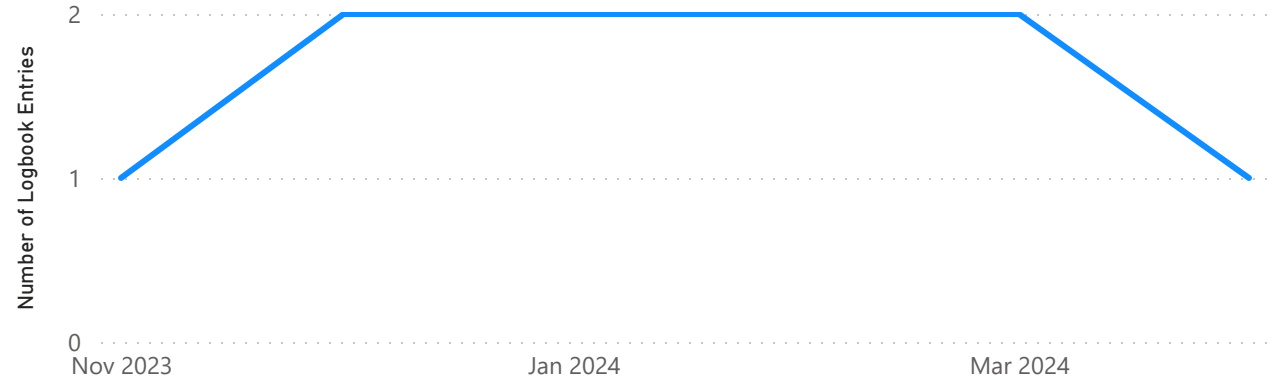
DATETIMEINIT

📅 11/11/2023 - 5/10/2024

237

Count of REQUESTID

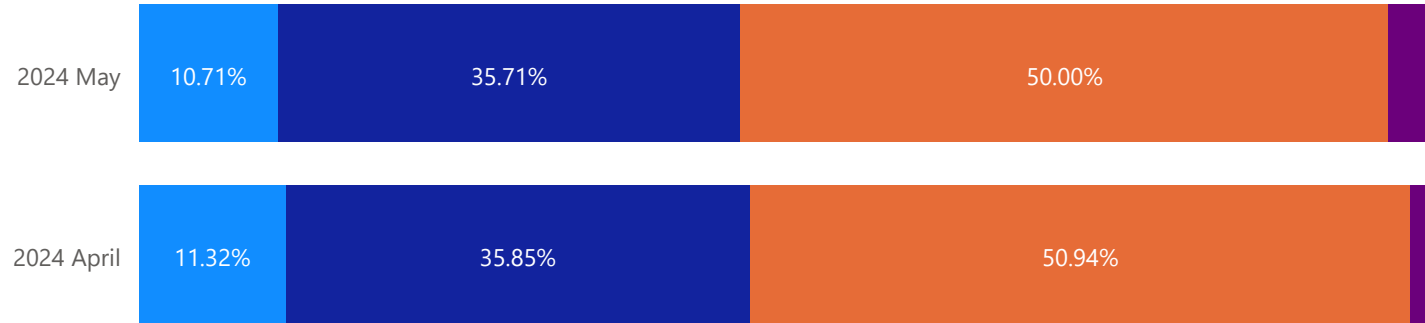
Number of Logbook Entries Created Over Time



REQUESTID	# OF ANIMALS OR EGGS	ACTION	ACTIVITY	ATTRACTANT	Surface	WEATHER	WILDLIFE ISSUE
12840		VEHICLE HARASS	LOITERING		SHORT GRASS	Clear	BIRD HAZING
12835						Clear	None observed
12831		VEHICLE HARASS	FLYING LOCAL		SHORT GRASS	Cloudy	BIRD HAZING
12828	12					Light Rain	OBSERVED
12827	2	VEHICLE HARASS	LOITERING		SHORT GRASS	Light Rain	BIRD HAZING
12826	1	VEHICLE HARASS	LOITERING		PAVEMENT	Light Rain	BIRD HAZING
12818	1	VEHICLE HARASS	LOITERING		PAVEMENT	Cloudy	BIRD HAZING
12816	1	VEHICLE HARASS	LOITERING		TAXIWAY	Clear	BIRD HAZING
12812		PYRO HARASS	FLYING LOCAL		RUNWAY	Clear	BIRD HAZING
12811		PYRO HARASS	LOITERING		SHORT GRASS	Clear	BIRD HAZING

Inspection Types by Month as a Percentage

Inspection Type ● Part 139 Continuous ● Part 139 Day ● Part 139 Night ● Part 139 Special



INITIATEDDATE

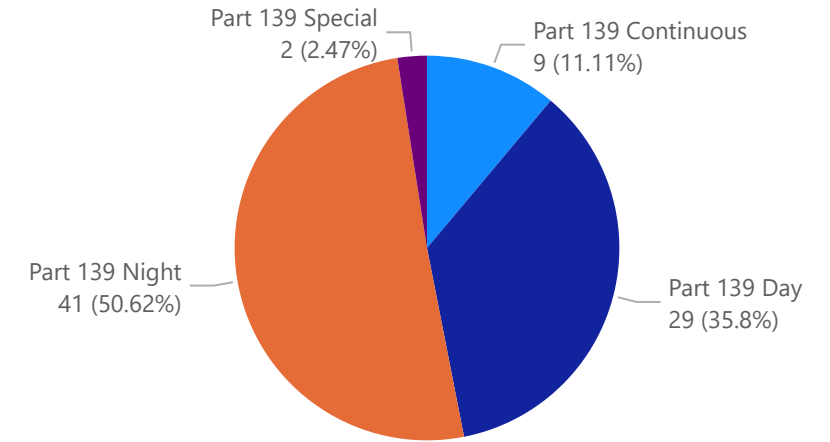
Last Months

4/11/2024 - 5/10/2024

81

INSPECTIONID

Part 139 Inspections by Type

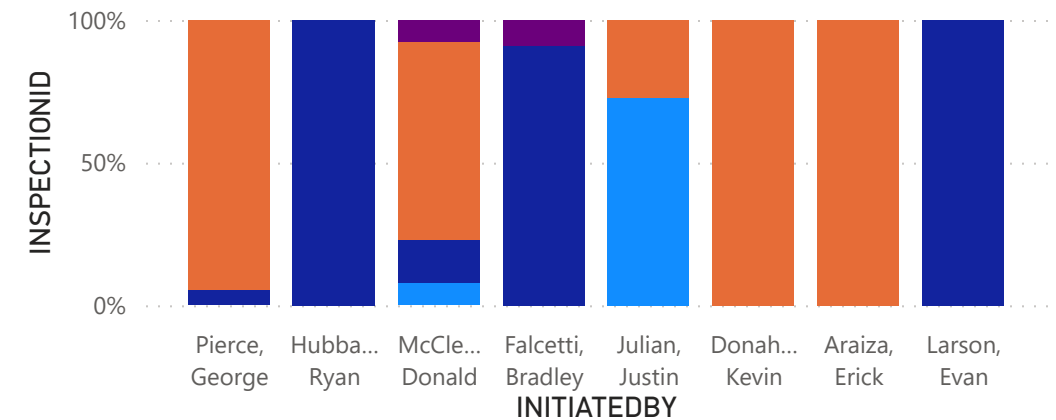


INSPECTIONID	INITIATEDDATE	INSPTEMPLATENAME	INITIATEDBY	INSPECTEDBY	CLOSEDBY	STA
6532	05/10/2024	Part 139 Night	Pierce, George	Pierce, George		OPE
6531	05/09/2024	Part 139 Night	McClendon, Donald	McClendon, Donald	McClendon, Donald	CLO
6530	05/09/2024	Part 139 Day	Larson, Evan	Larson, Evan	Larson, Evan	CLO
6529	05/09/2024	Part 139 Night	Pierce, George	Pierce, George		OPE
6528	05/08/2024	Part 139 Night	Donahue, Kevin	Donahue, Kevin	Donahue, Kevin	CLO
6527	05/08/2024	Part 139 Day	Larson, Evan	Larson, Evan	Larson, Evan	CLO
6526	05/07/2024	Part 139 Night	Donahue, Kevin	Donahue, Kevin	Donahue, Kevin	CLO
6525	05/07/2024	Part 139 Day	Larson, Evan	Larson, Evan	Larson, Evan	CLO
6524	05/07/2024	Part 139 Continuous	Julian, Justin	Julian, Justin	Julian, Justin	CLO
6523	05/06/2024	Part 139 Night	Donahue, Kevin	Donahue, Kevin	Donahue, Kevin	CLO

Total

Inspection Types by Employee as a Percentage

Inspection Type ● Part 139 Conti... ● Part 139 Day ● Part 139 Night ● Part 139 Sp...



All Logbook Entries



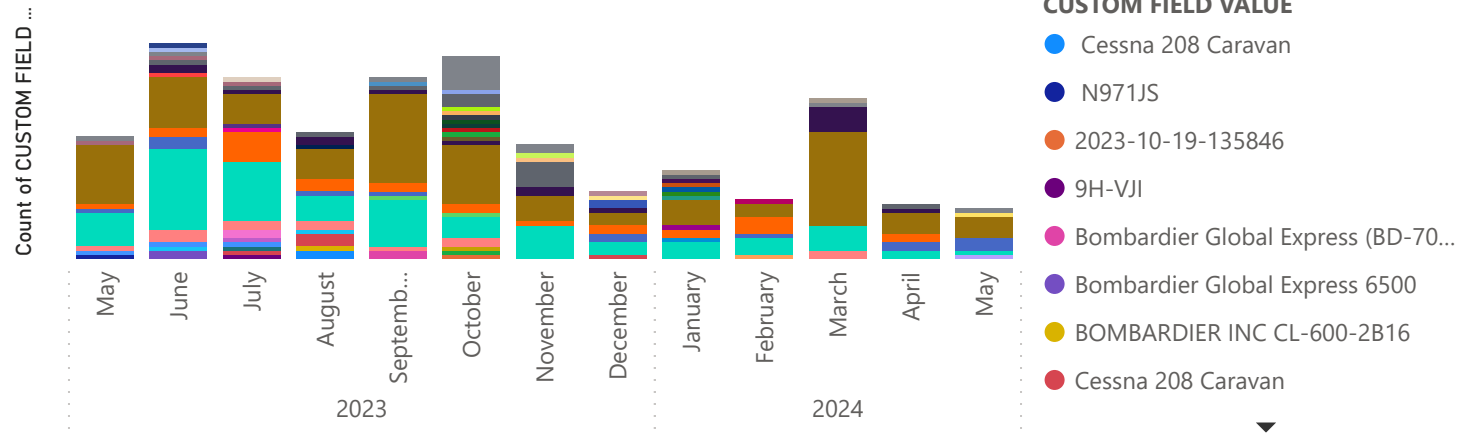
How To Use This Report:

1. Set the Date Range Below.
2. Use the Logbook Drill Down arrows (V) to refine the visuals.
3. Use Ctrl+ to select multiple values.
4. Click on the 'Reset Slicers' button above to clear all filters.

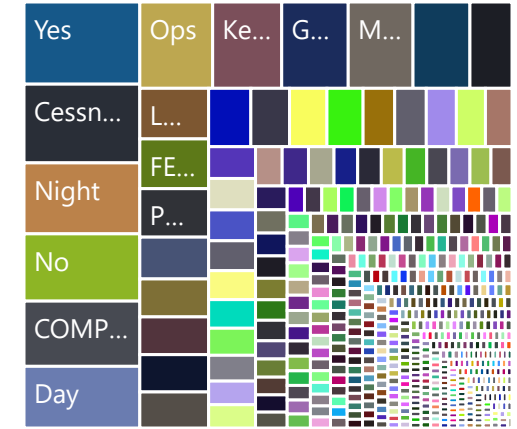
Date ▼

Last ▼ 1 Years ▼

Count of Custom Field Name and Custom Field Values Over Time



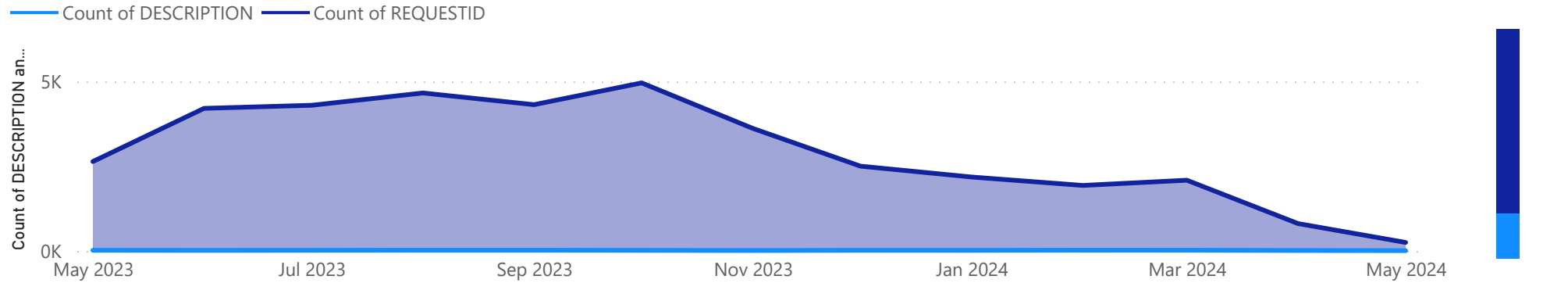
Count of Custom Field Value and Logbook Entry



Logbook Drill Down Slicer

- Aircraft Alert
- Aircraft Incident / Accident / D...
- Communications
- Engine Run-Up
- Escort
- Fire Alarm - Airside
- Fire Alarm - Landside
- FOD
- Fuel Spill
- Gate Reservation

Count of Logbook Description and Logbook Entries Over Time



Logbook 'Custom Fields' Details

(only Logbook Entries with Custom Fields values will show here)

Count of Logbook Entries with CF values: **2597**

REQUESTID	# Birds Seen	# Birds Struck	# OF ANIMALS OR EGGS	# of Crew	# of Crew (archived)
12843					
12841					
12840					
12839					
12837					

General Details Based on 'Description'

(this table will not update based on 'Custom Field' selections)

Count of Logbook Entries based on Description: **2700**

REQUESTID	DATETIMEINIT	DESCRIPTION	STATUS	DETAILS
<u>12843</u>	05/10/2024	Security Inspection	OPEN	Patrolled and inspected all airport ga No issues.
<u>12842</u>	05/09/2024	Snow and Ice	OPEN	Vehicle calibrated to summer specs.
<u>12841</u>	05/09/2024	Fuel Spill	OPEN	Roughly 160 gallons of jet A was
Total				