



# King County

International Airport Boeing Field

7277 Perimeter Road S., Seattle WA 98108

---

**Meeting:** Roundtable Advisory Committee  
**Date:** Monday, February 10, 2024  
**Time:** 5:00 – 6:30 pm  
**Location:** Zoom Meeting /Terminal 110 Conference Room

---

## A G E N D A

1. Welcome (Erik Utter, Chair) 5:00 pm
2. Public Comment – 10 minutes  
*Public comments are limited to 2 minutes each speaker for a total of 10 minutes.*
3. Roll Call - 2 minutes
4. Approval of January Meeting Minutes – 2 minutes
5. Airport Updates and Discussion:
  - Hangar and Tie Down Fees (M. Sykora) - 15 minutes
    - Draft letter review
    - Q&A
  - Taxiway Bravo Relocation Safety Project (M. Sykora) – 10 minutes
    - Presentation
    - Q&A
  - Vision 2045, Part 150 Update (M. Sykora) – 10 minutes
    - Presentation
    - Q&A
  - 2025 Summer Construction Update (M. Sykora) – 15 minutes
    - Presentation
    - Q&A
6. Chair's Report (E. Utter)
  - Review minimum standards motion made in January meeting and discuss feedback – 10 minutes
  - Bus stop update - 5 minutes
7. New Business



# King County

International Airport Boeing Field

- 2025 Roundtable priority setting retreat - 10 minutes

8. Adjourn

6:30 pm

**Zoom Best Practices:**

\* Please mute your microphone when you are not speaking. If a question comes up during the meeting, please use the chat feature so it can be addressed.



Department of Executive Services -- Airport Division  
Roundtable Meeting Minutes for January 13, 2025

5:05 pm Meeting called to order by Erik Utter

1. Welcome (Erik Utter)
2. Introduce Jenny Thacker and Ayako Shapiro, facilitation team (Erik Utter)
3. Roll Call (Ellen Knowlen)
4. Approval of Meeting Minutes. We had a quorum; December's meeting minutes were approved.
5. Public comment. We had public comments.
6. Airport Updates:
  - i. Strategic Plan (Matt Sykora and AMCG Consultants): M. Sykora introduced the latest work on the Strategic Plan and handed it over to AMCG consultants, David Brenner and Bob Trimborn, to go through a slide deck that showed directly where input the Roundtable had provided in the past influenced changes in the Strategic plan. They explained key revisions and additions to the documents and then discussed timeline and next steps.
  - ii. Taxiway Bravo Relocation Safety Project (Matt Sykora): Matt gave an update on the project and noted who it would impact.
7. Chair's Report (E. Utter)
  - i. Metro Bus Stop/Roundtable Letter: Ali asked the Roundtable members if they all agreed to put forward the letter requesting a safe location for the bus stop. **A vote was taken on sending the letter out and the motion was passed.**
  - ii. Minimum/Standards – Rules and Regulations Subcommittee: Erik shared the comments that the Rules and Regulations Subcommittee made to the proposed minimum standards and asked the board to support the Subcommittee's recommended edits that were made as comments to the draft document. **A motion was made to support the Rules and Regulation Subcommittee recommended edits to the Minimum Standards document and the motion passed.**
8. New Business:
  - Upcoming Roundtable meeting to set priorities: Jenny and Ayako will schedule for first quarter.
  - Airport 101 training: Matt Sykora is working on setting up a training for the Roundtable.
  - Public meeting training: This will also take place during the first quarter, maybe during the priority setting meeting.
9. 6:30 pm Motion to Adjourn.

Roundtable members in attendance: Erik Utter, Ali Lee, Brian Algiers, Dalan Angela, Matt Hayes, Holly Krejci, Mark McIntyre, Ken Moninski, Evan Nelson, Takashi Nelson, Stephen Ratzlaff, Kelly Ronan-Hafner, Ryan Tomasich, Velma Veloria

KCIA staff in attendance: John Parrott, Dave Decoteau, Matt Sykora, Ellen Knowlen

Consultants: David Brenner (AMCG), Bob Trimborn (AMCG)

Facilities: Ayako Shapiro and Jenny Thacker (PRR)

This meeting was attended via Zoom and in person. This meeting was audio recorded.



## King County

### Facilities Management Division

Department of Executive Services  
410 Fifth Avenue, Room 900  
Seattle, WA 98104  
Phone: (206) 477-9365  
Fax: (206) 205-5070

Date

Dear Valued Airport Tenant,

This letter serves as a courtesy notice regarding upcoming changes to our hangar and tiedown rental rates at the airport. As you may be aware, the rental rates have remained unchanged for over five years. To ensure the airport's fiscal stability and to support necessary capital improvements, King County will be increasing hangar and tie-down rental rates in 2025.

#### **Key Changes:**

- New monthly rental agreements will be prepared for all tenants.
- New rates will take effect August 1, 2025.
- All tenants will be required to execute new monthly rental agreements.

No immediate action is required from you at this time. This notice is intended to keep you informed of the upcoming changes and process. New monthly rental agreements will be provided well in advance of the effective date. On the reverse side of this of this letter, you will find the recently appraised rental rates. Below that section are the planned rental rates.

If you have any questions or concerns regarding these changes, please don't hesitate to contact me at [gil.white@kingcounty.gov](mailto:gil.white@kingcounty.gov).

Thank you for your continued partnership in maintaining our airport's excellence.

Sincerely,

Gil White  
Real Property Agent  
Facilities Management Division

**Facilities Management Division 2025 Hanger & Tiedown Rate Adjustments**

**Appraised Value**

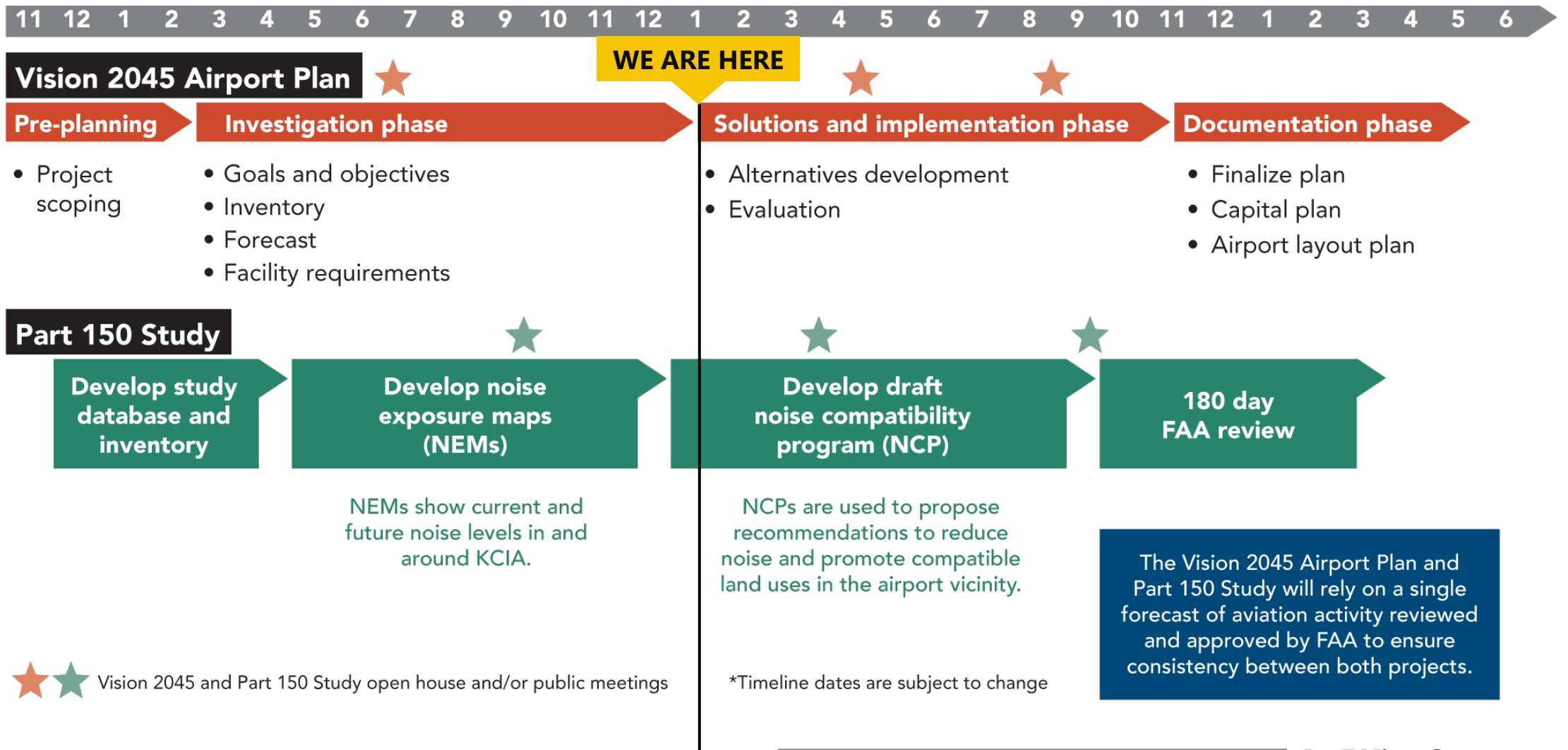
| <b>Hanger</b>         | <b>Appraised Monthly Rate</b> | <b>Percentage Increase</b> |
|-----------------------|-------------------------------|----------------------------|
| Midfield – Building A | \$3,816                       | 9%                         |
| Midfield – Building B | \$5,202                       | 7%                         |
| Midfield – Building C | \$1,361                       | 15%                        |
| Midfield – Building D | \$1,089                       | 9%                         |
| Northeast             | \$1,070                       | 9%                         |
| Southwest             | \$1,418                       | 47%                        |
| Tie Downs             | \$190                         | 73%                        |

**Rates Effective 7/1/2025** (Lease Framework Working Group recommendations considered)

| <b>Hanger</b>         | <b>Current Monthly Rate</b> | <b>New Monthly Rate</b> | <b>Percentage Increase</b> |
|-----------------------|-----------------------------|-------------------------|----------------------------|
| Midfield – Building A | \$3,498.04                  | \$3,816                 | 9%                         |
| Midfield – Building B | \$4,852.12                  | \$5,202                 | 7%                         |
| Midfield – Building C | \$1,182.56                  | \$1,361                 | 15%                        |
| Midfield – Building D | \$995.25                    | \$1,089                 | 9%                         |
| Northeast             | \$981.71                    | \$1,070                 | 9%                         |
| Southwest             | \$964.78                    | \$1,158                 | 20%                        |
| Southwest – End Units | \$983.96                    | \$1,181                 | 20%                        |
| Tie Downs             | \$110                       | \$132                   | 20%                        |

cc: Drew Zimmerman, Acting Director, FMD  
 John Parrott, Director, KCIA  
 Julie Ockerman, Property Services Manager, FMD  
 Steve Rizika, Real Property Agent Supervisor, FMD  
 Kristin Cline, Finance Manager, KCIA

# Updated schedule (January 2025)





# Learn more

Mark your calendars, and invite your community and colleagues:

## **Part 150 Study Open House**

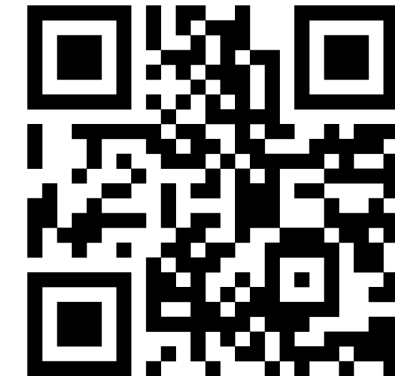
Wednesday, March 20, 2025

5:30 to 7:30 p.m.

KCIA Flight Service Station  
6526 Ellis Avenue S. Seattle, WA

**Project study website**

[KCIPlanning.com](http://KCIPlanning.com)





# Vision 2045

AIRPORT PLAN UPDATE

# Part 150 Study

NOISE AND LAND USE COMPATIBILITY STUDY

## Help us plan for the future of King County International Airport

King County International Airport (KCIA) is undertaking two important studies to plan for the future: Vision 2045 and the Part 150 Study.

### What is the Vision 2045 Airport Plan?

The Vision 2045 Airport Plan will evaluate how KCIA can evolve and adapt to meet future aviation needs and maintain its status as a world-class airport. KCIA will consider:

- Safety
- Efficiency
- Environmental stewardship
- Fiscal sustainability
- Land management
- Community engagement
- Operational readiness

Through this planning, the Vision 2045 Airport Plan will identify projects KCIA would implement to operate safely and efficiently while meeting changing aviation demand. Vision 2045 will follow long-range facility planning guidance from the Federal Aviation Administration (FAA) and will account for potential environmental and socioeconomic impacts. Vision 2045 started in January 2024, and will continue for about two years.



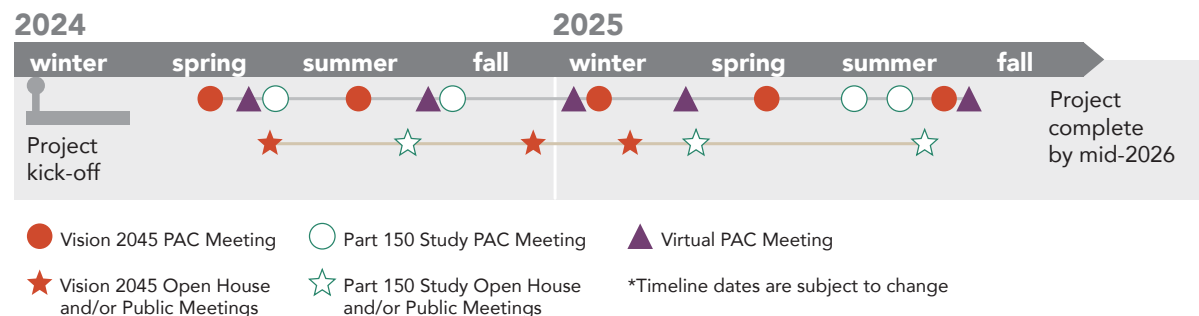
### Help inform Vision 2045 and the Part 150 Study

Your input will influence the priorities and strategies that will shape the future of KCIA. We will ask for feedback on important study topics like safety, noise, environmental impacts, and use of the airport.

#### How we ask for input

- Project Advisory Committee (PAC)
- Meetings with community-based organizations
- Public open houses
- Project email and website updates
- Newsletters and mailers
- Community events and briefings

### Timeline



### Contact us

If you have questions, email [KCIACommunityOutreach@kingcounty.gov](mailto:KCIACommunityOutreach@kingcounty.gov) or visit [KCIAPlanning.com](http://KCIAPlanning.com)

Si desea más información en español, visite [KCIAPlanning.com/kcia-es](http://KCIAPlanning.com/kcia-es), o escanee.

您了解更多信息 (中文), 請瀏覽 [KCIAPlanning.com/kcia-zh-tw](http://KCIAPlanning.com/kcia-zh-tw) 或掃描。

想要了解更多中文信息, 请访问 [KCIAPlanning.com/kcia-zh-cn](http://KCIAPlanning.com/kcia-zh-cn), 或扫描。

Para sa karagdagang impormasyon sa Tagalog mangyaring bisitahin [KCIAPlanning.com/kcia-tl](http://KCIAPlanning.com/kcia-tl), o i-scan.

Để tìm hiểu thêm bằng tiếng Việt, vui lòng ghé trang web [KCIAPlanning.com/kcia-vi](http://KCIAPlanning.com/kcia-vi) hoặc quét mã QR.

សម្រាប់ការផ្តល់ព័ត៌មានបន្ថែមជាភាសាខ្មែរ សូមចូលមកកាន់ [KCIAPlanning.com/kcia-km](http://KCIAPlanning.com/kcia-km) ឬស្កេន QR កូដ។

# Part 150 Study

## NOISE AND LAND USE COMPATIBILITY STUDY

### What is the Part 150 Study?

The Part 150 Noise and Land Use Compatibility Study (Part 150 Study) is a voluntary Federal Aviation Administration (FAA) process that identifies the level of aircraft noise in an airport vicinity and identifies potential measures to reduce the effects of noise on surrounding neighborhoods.

KCIA will use information from the Part 150 Study to inform parts of the Vision 2045 Plan.

### Did you know?

#### Two noise studies at different airports

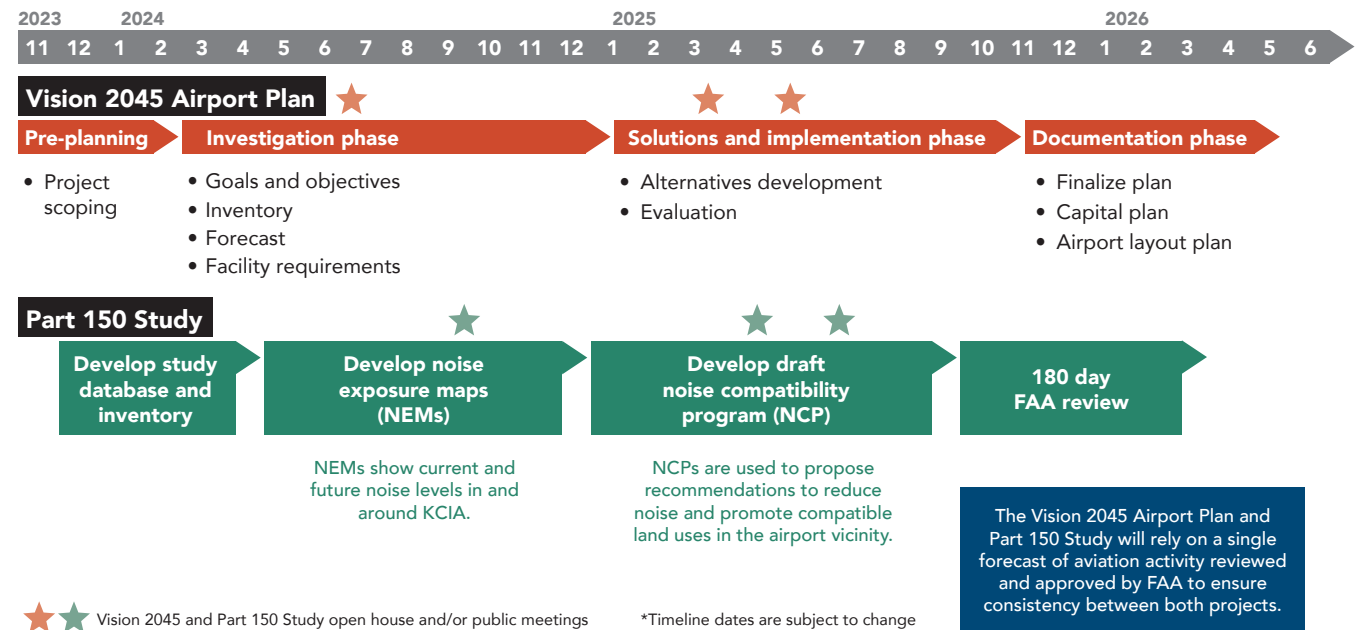
The Port of Seattle is doing a separate Part 150 Study for SEA Airport at the same time as the KCIA Part 150 Study. KCIA and Port of Seattle are coordinating community meetings so that they don't overlap. Learn more about the SEA Part 150 Study at [portseattle.org/page/sea-part-150-noise-study](https://portseattle.org/page/sea-part-150-noise-study)

### Part 150 Study process

The Part 150 Study is expected to take approximately two and a half years, with study completion and FAA approval in 2026. There are two parts to the Part 150 Study planning process.

- 1. Create noise exposure maps (NEMs) to show current and future noise levels in and around KCIA.** NEMs show noise levels based on the types and number of aircraft operations, runway layout, time of day of aircraft operations, and aircraft flight patterns.
- 2. Create a Noise Compatibility Program (NCP) and seek FAA approval.** In the NCP, the KCIA study team will propose recommendations to reduce noise and promote compatible land uses in the airport vicinity. Then the FAA will review the NCP. After review, the FAA will send KCIA a Record of Approval (ROA), which identifies the measures the FAA does or does not approve for implementation.

### Vision 2045 and Part 150 Study Timeline



### Join the conversation

If you have questions, email [KCIACommunityOutreach@kingcounty.gov](mailto:KCIACommunityOutreach@kingcounty.gov) or visit [KCIAPlanning.com](https://KCIAPlanning.com)

| Number  | Name                        | PM        | YTD Actuals | \$ Annual Variance | % Annual Variance | Key Activities - Current Quarter   | Closely Monitored Issues and Key Risks  |
|---------|-----------------------------|-----------|-------------|--------------------|-------------------|--|---|
| 1028653 | PAVEMENT REHABILITATION     | Khalili   | -\$915      | -\$970,101         | -97%              | Ongoing program. Quarterly Activities managed through sub projects   | Ongoing program. Risks managed through sub projects   |
| 1028654 | LOOP BLDG REMEDIATION       | Cracknell | \$0         | \$912,000          |                   | Review bids and select subconsultant for HazMat abatement  | Building is contaminated with asbestos and lead. Sampling will reveal level of effort for safely abating the building.  |
| 1028662 | NORTH BOEING FIELD MTCA     | Dumaliang | \$75        | -\$113,183         | -74%              | Slip 4 source control work to include PFAS Investigation.  | Key risk is Ecology request for additional work as PLP. Current request is PFAS investigation.  |
| 1119982 | AIRPORT REDEVELOPMENT       | Dumaliang | \$176       | -\$46,659          | -19%              | Ongoing program. Quarterly Activities managed through sub projects The ART Permitting continues. The FSS HVAC Repl & Solar is slated to complete this quarter.   | Ongoing program. Risks managed through sub projects. For FSS, stakeholders have requested the design team to assess the feasibility of having the solar array feed the car chargers, the design team is currently reviewing this. This would cost the project additional funds and add additional days to the design schedule.  |
| 1120212 | NBF GTSP REMEDIAL ACTION    | Dumaliang | \$75        | -\$5,572           | -12%              | RI Report to be completed. MTCA Grant reimbursements. Start of Feasibility Study.  | The scope of this project is dependent on the north Boeing field remedial investigation and feasibility study. Cleanup operations to occur after in a separate order.   |
| 1120730 | AIRPORT FACILITIES REPAIR   | Khalili   | -\$361,513  | \$1,277,242        | 177%              | Ongoing program. Quarterly Activities managed at the annual basis through sub project  | Ongoing program. Risk managed at the annual basis through sub project   |
| 1120731 | AIRPORT FLEET               | Bartley   | \$3,923     | -\$1,268,689       | -42%              | Ongoing program. Quarterly Activities managed through sub projects   | Ongoing program. Risks managed through sub projects   |
| 1120732 | LOWER DUWAMISH WATERWAY     | Dumaliang | -\$7,969    | -\$90,750          | -70%              | Ongoing program. Quarterly Activities managed through sub projects. Prepare work order for 2025 sampling.  | Ongoing program. Risks managed through sub projects   |
| 1135085 | RUNWAY 14L-32R REHAB        | Miller    | \$915,839   | -\$6,253,289       | -23%              | Ensure all materials have been ordered and delivered, finalize construction schedule, hold preconstruction meeting, and commence construction by March 15th (with mobilization occurring in early March).  | FAA has not previously submitted timely reviews, if timely responses are not received this could further delay the project. Invoices from RS&H have been severely delayed, Ginny and I met with RS&H to clarify their responsibilities and chart out a path to get back on track. RS&H will be required to submit monthly invoices for each month to catch up.  |
| 1137242 | AIRFIELD ELECTRICAL UPGRDES | Dumaliang | -\$3,660    | \$1,493,346        | 902%              | Ongoing program. Quarterly Activities managed through sub projects. Airfield Electrical Project Phase III is planning to complete work this quarter.   | Ongoing program. Risks managed through sub projects. In December 2024, the project was to be ended early with ALCMS completion in 1Q/2Q 2025 and remaining scope cancelled.   |
| 1138851 | ASSET MANAGEMENT PROGRAM    | Dumaliang | \$0         |                    | 0%                | Ongoing program. Quarterly Activities managed through sub projects. Asset Management Framework project closure.  | Ongoing program. Risks managed through sub projects. Final payments to be made before project closeout.   |
| 1139512 | TAXIWAY B RELOCATION        | Miller    | \$1,390     | \$4,899,898        | 1558%             | Advertise the A&E contract, perform proposal evaluation and issue notice of intent to award to the selected consultant. Receive FAA approval on the Alternative Project Delivery method, and advertise the OA contract. Continue with Section 7 consultation, and the initial steps of the NEPA process. | Coordination with tenants for work on their leaseholds will require the project team to incorporate the tenants standards into the project. If the tenant is not willing to coordinate or does not provide timely feedback the project could be delayed.<br><br>This project will require very close coordination with the FAA which can cause delays if their reviews exceed the standard timeframes.  |
| 1139534 | KCIA CLIMATE ACTION PLAN    | Dumaliang | \$433       | \$71,743           | 64%               | Ongoing program. Quarterly Activities managed through sub projects.  | Ongoing program. Risks managed through sub projects   |
| 1139536 | AIRPORT STORMWATER PROGRAM  | Dumaliang | -\$396,551  | \$2,750,003        | 7857%             | Ongoing program. Quarterly Activities managed through sub projects   | Ongoing program. Risks managed through sub projects   |
| 1139545 | AIRPORT SECURITY PROGRAM    | Harris    | \$0         | \$1,456,311        | 7281554900%       | Executing construction work orders to update fences and support one future project<br><br>1. Loop building gate and fence<br><br>2. Budget for a future standalone contract.   | Schedule could impact available budget as WO contract expires in May.   |
| 1139547 | WATER AND SEWER MGT SYSTEM  | Khalili   | \$0         | -\$250,000         | -100%             | Ongoing program. Quarterly Activities managed through sub projects   | Ongoing program. Risks managed through sub projects   |
| 1141114 | A11 CONNECTOR RECONST       | Miller    | \$5,977     | -\$1,203,649       | -98%              | Finalize permit, advertise the construction contract, receive and evaluate the construction bids, issue notice of intent to award.   | Central Procurement was delayed in reviewing the documents, and if this pattern continues it will delay the project. King County Permitting also has not started their review and if this trend continues could delay the project.  |
| 1141122 | STRMWTR PIPE REPLCMT PH III | Dumaliang | -\$396,849  | -\$1,678,427       | -42%              | Work suspension initiated from Nov-Mar. Resume progress meetings on March 2025 prior to start of work. Tentative schedule to sequence Work areas 7 & 8 in March 2025 and Work Areas 2 & 3 in July 2025.  | Schedules for construction projects are being planned for next year and a schedule to be provided to avoid impacts with other projects.   |
| 1141128 | AIRPORT WAY STORMWATR INPUT | Dumaliang | \$298       | -\$151,649         | -29%              | Execute design amendment and proceed to design and bid support.  | The design of the project will include capacity improvements of Drainage basin 3 from offsite drainage. This will improve the capacity of the stormwater system. The Taxiway Bravo project in the future will benefit from the improved stormwater capacity and reduce the need for major capacity improvements for the project. Additional scope of VSR realignment and pavement construction added to scope will increase cost. Budget submission for construction submitted. |
| 1141154 | CARBON ACCREDITATN STUDIES  | Dumaliang | \$335       | -\$32,313          | -16%              | Continue Level 3 work. Procure third party contractor for certification.   | KCIA has to continually demonstrate emission reductions, which is currently not shown in our emission trends.   |
| 1141157 | CLIMATE PREPARDNSS STUDIES  | Dumaliang | \$0         | -\$48,957          | -72%              | USGS monitoring of Airport groundwater levels.   | None.   |
| 1141164 | AIRFD ELEC SYS UPGDE PH III | Dumaliang | -\$3,660    | -\$1,572,894       | -53%              | Work suspension Nov-Feb. Resume work on March with progress meetings. Schedule to come out in a week or so. Work with on extending Designer contract by 2/28   | Storage of products already purchased.  |
| 1141172 | ASSET MGT FRAMEWORK         | Dumaliang | \$0         | -\$34,011          | -100%             | Asset Management Framework project closure.  | Final payments to be made before project closeout.  |
| 1141346 | KCIA AIR MONITORING PLAN    | Cracknell | \$97        |                    |                   | Project is complete.   | None  |

|         |                             |                |            |              |       |   |   |
|---------|-----------------------------|----------------|------------|--------------|-------|---|---|
| 1141350 | STRMWTR FACLTY CLEANING     | Dumaliang      | \$0        |              | 0%    | Prepare contract and schedule for 3Q cleaning.  | Review status of universal contract for 2025 work.  |
| 1141353 | STRMWATR LINE/CB CLEANING   | Dumaliang      | \$0        | -\$180,000   | -100% | No activity. Project completed and will be moved to operating budget in 2025  | Work with Contracts on the use of the VPC contract.   |
| 1141355 | SLIP 4 SOURCE CONTRL INVEST | Dumaliang      | \$0        | -\$107,611   | -100% | complete work.  | This work will be performed with PAO oversight and reviews.   |
| 1142941 | ART PERMITTING              | Khalili        | \$0        | \$6,000      | 3%    | Ongoing support for existing projects during the permitting stage. If any permitting agencies require additional fees or support, this will be handled exclusively for the existing projects still under the ART team's responsibility. | N/A   |
| 1143915 | RUNWAY 14R-32L REHAB        | Miller         | -\$6,915   | \$1,820,833  | 439%  | Finalize the NEPA and planning phase documents. Finalize negotiations for the Phase 2 Design contract and submit to the FAA for approval.   | FAA ADO review is required at various points throughout the project, which can sometimes take months, which would delay the project. Timely responses from the FAA ADO are required. Timely responses and review from the King County Department of Permitting are also required, or the project will face delays.  |
| 1143917 | WANG SITE REHAB             | Sanchez Yubero | \$118      | -\$883,968   | -27%  | Procurement for the Seismic Assessment (201 Building). FMD-GLY  | This project was originally planned for the 2026-27 budget and we need to appropriate additional funds to start the work now.<br>The current plan is for FMD to take over project management and delivery. Managing this relationship will be key to the projects success<br>We are currently performing a soil liquefaction analysis, pending the results of the analysis the project will move forward or the project will need to be modified to fix the issues. |
| 1143931 | AIRPORT INFO MGT PROGRAM    | Harris         | \$0        |              | 0%    | Create digital asset standards for publishing continued   | Budget has caused a search for new consultant services.   |
| 1143948 | VISION 2045/PART 150 STUDY  | Bartley        | -\$734,906 | -\$874,733   | -34%  | Finalize Facilites Requirements<br>Draft Alternatives<br>Develop NCP  | Community and Tennent Engagement will be a major focus of this project. There will be high visibility with the Executive's Office and Council on this project. Will need to work closely with the FAA ADO on the aviation forecast and ALP approval to stick on schedule.   |
| 1143950 | AIRPORT PLANNING/SUPPORT    | Bartley        | \$24,914   | \$566,488    | 500%  | NA  | Most of the budget is contingency for "pop-up" projects so project spend is unknown.  |
| 1146188 | FSS HVAC SYS REPL & SOLAR   | Sanchez Yubero | \$176      | -\$1,011,618 | -99%  | Procurement process (ESPC and/or JOC)   | Stakeholders have requested the design team to assess the feasibility of having the solar array feed the car chargers, the design team is currently reviewing this. This would cost the project additional funds and add additional days to the design schedule.  |
| 1146412 | TAXIWAY B SINKHOLE REPAIR   | Sanchez Yubero | \$0        | -\$201,250   | -100% | N/A   | Risks to immediate fix include delays due to material availability and executing a change order with additional costs.<br><br>Risk of recurrence if a permanent fix is not implemented in the next 5-7 years. 7 years absolute max.   |
| 1146512 | PAVEMENT REHAB 2023 2024    | Sanchez Yubero | \$118      | -\$1,019,600 | -100% | Implementation of the following WOs:<br>1. Pavement Repair at VSR near UPS Ramp<br>2. Pavement Repair at VSR next to Taxiway A2   | Lack of bidders - central procurement recommended the time and materials approach to attract more bidders the next time<br><br>Procurement delays - because this is a similar scope and tech specifications to the last time we hope to minimize procurement delays due to reviews.   |
| 1146794 | AIRPORT STRATEGIC PLAN      | Bartley        | \$24,914   | -\$134,616   | -41%  | Review and revise draft document.   | Tight schedule to meet all requirements and be delivered in close coordination with Vision 2045. There will be a lot of overlapping community engagement for both these projects at the same time.  |
| 1146797 | 2024 FLEET VEHICLE PRCHS    | Fotheringill   | \$0        |              |       | Q1 2025<br>Take delivery of the Oshkosh Volterra Striker Hybrid Fire Truck<br>Take Delivery of 5 Chevy Silverados for ARFF<br>Monitor Purchase of Dump Truck Swap Loader  | Estimated timelines for vehicle delivery from manufacturer and in service dates<br>Estimated costs for upfitting versus actuals<br>Run time reports for vehicles monthly  |
| 1146861 | PLANNING PRGM CIP ADMIN     | Bartley        | \$0        | -\$26,000    | -100% | Closeout the project number   | Closing out old WOs and balancing work with new master WOs  |
| 1146883 | LDW SOURCE CNTRL SMPLNG     | Cracknell      | -\$7,969   | -\$25,750    | -74%  | Sampling plan and HASP will be sent for review. Sampling date will be dependent on dry weather.<br>Sampling completed on 11/27/2024   | Sampling is weather dependent. High rains cause increased flows in stormwater system, creating an unsafe environment for consultant to collect solids.<br>Sampling was conducted on a dry day (no precipitation) and pump stations were turned off as an added layer to safety.<br>Sampling complete for 2024.  |
| 1146953 | FAC SPU BACKFLOW            | Khalili        | -\$361,513 | -\$480,800   | -100% | Closeout phase  | N/A   |
| 1147071 | SENSUS WATER METER INSTALL  | Khalili        | \$0        | -\$6,000     | -100% | We plan to replace additional meters as materials and the third-party contractor become available.  | The risks associated with this project include the availability of the third-party installer, lead time for obtaining additional meters, and potential shipping delays during the winter season, which could be critical to the project timeline.   |
| 1147360 | SW FLOW MONITORING 2023/24  | Dumaliang      | \$36,416   |              |       | Data review and reporting to conclude project.  | Work order expires in March of 2025.  |
| 1147373 | DIGITAL ASSET STANDARDS     | Harris         | \$0        |              |       | Execute Work order and proceed with requirements gathering.<br>Complete first draft of standards and templates<br><br>Incorporate corrections for standards document and templates. Deliver final product and close.                    | Delivery of standards<br>Lack of budget is creating issue with consultant selection.  |
| 1148879 | ARFF MODFCTNS EV CHRNG STN  | Bartley        | \$0        |              |       | Preform load test using fancy new load sensors<br>Closeout  | Schedule, the truck will arrive in December<br>Lack of communication with the manufacturer  |

|         |                             |                |          |            |       |  |   |
|---------|-----------------------------|----------------|----------|------------|-------|--|---|
| 1148966 | KENMORE HANGAR DEMO         | Bartley        | \$0      |            |       | Start and complete NEPA<br>Continue Negotiations for Demo<br>Start demo (if weather permits) | Unknown   |
| 1141137 | ROSSO FENCE REPL            | Khalili        | \$0      | -\$300,708 | -100% | Project Closeout   | N/A   |
| 1146863 | LAP UPS AREA PENDING REMDTN | Sanchez Yubero | -\$7,009 | -\$300,000 | -100% | N/A  | Contract Procurement depend on FMD ,any delay from FMD will impact the Schedule |
| 1147298 | ATCT/SW AIRPARK COND ASSESS | Harris         | \$0      | -\$239,400 | -100% | Closed   | None  |

## External Relations Monthly Report

February 2025

### Past Meetings

1. Airport Strategic Plan Meeting – January 13<sup>th</sup>
2. South Seattle Community Round Table – January 23<sup>rd</sup>

### Upcoming Opportunities

1. 2025 Summer Construction Meeting
  - Date:** Thursday, February 13th, 2025
  - Time:** 2:00 p.m. to 3:00 p.m.
  - Where:** King County International Airport – Former Flight Service Station Building
2. Vision 2045 / Part 150 Project Advisory Committee Meeting (**PAC Members Only**)
  - Date:** Wednesday, February 26, 2025
  - Time:** 4-5:30 p.m.
  - Location:** KCIA Main Terminal, 7277 Perimeter Rd. S.
3. Part 150 Open House
  - Date:** Thursday, March 20<sup>th</sup> 2025
  - Time:** 5:30 pm – 7:30 pm
  - Where:** King County International Airport – Former Flight Service Station Building

### Recourses

[Vision 2045 / Part 150 Website](#)

# Newsletter

January 2025



**King County**  
International Airport  
Boeing Field

**Vision 2045**  
AIRPORT PLAN UPDATE

**Part 150 Study**  
NOISE AND LAND USE COMPATIBILITY STUDY

## Planning for the future of KCIA

King County International Airport (KCIA) is conducting the Vision 2045 Airport Plan and the Part 150 Study, both aimed at shaping the future of the airport. Your voice is essential in this process, as community feedback will guide our priorities and help KCIA meet evolving community and aviation needs. These studies began in January 2024 and will be complete by mid-2026.

Sign up for project email updates and learn how to provide input throughout the Vision 2045 Airport Plan and Part 150 Study at [KCIPlanning.com](https://www.kciaa.com/kcia-planning)

### What's new?

The Vision 2045 Airport Plan Facility Requirements are underway, and the Part 150 Study draft Noise Exposure Maps (NEMs) will be submitted to the FAA for review and approval shortly. Learn more about NEMs and the Part 150 Study process at our next in-person Part 150 Study open house. Please see open house details on the right for more information.

### OPEN HOUSE

March 20, 2025 5:30-7:30 p.m.

Flight Service Station  
6526 Ellis Avenue S., Seattle, WA 98108

Planning to join us? RSVP or register in advance at [KCIPlanning.com](https://www.kciaa.com/kcia-planning).

**Part 150 Study**  
NOISE AND LAND USE COMPATIBILITY STUDY

## Vision 2045 Airport Plan and Part 150 Study overview

Vision 2045 and the Part 150 Study are separate but related efforts. The study team is sharing information about both efforts to make it as easy as possible for the community to participate and share input.

**Vision 2045**  
AIRPORT PLAN UPDATE

- Will create a plan for KCIA to evolve and adapt to meet aviation needs and maintain its status as a world-class airport
- Identifies projects KCIA would implement to continue to operate safely and efficiently while meeting changing aviation demand
- Follows long-range facility planning guidance from the Federal Aviation Administration and accounts for potential environmental and socioeconomic impacts

**Part 150 Study**  
NOISE AND LAND USE COMPATIBILITY STUDY

- A voluntary Federal Aviation Administration noise study
- Measures how much airplane noise is affecting noise exposure for people on the ground
- Creates processes or programs to address effects of airplane noise
- Will be used to inform the Vision 2045 Airport Plan

continues >

# Community input helps inform our planning process

KCIA is committed to involving the community, airport tenants, and interested parties in the Vision 2045 Airport Plan and the Part 150 Study.

## Open House updates

The study team will host a third open house on March 20, 2025. Community members, airport tenants, and interested parties are invited to review the draft Noise Exposure Maps and share input on the development of the Noise Compatibility Program (NCP). The NCP will identify measurable actions to reduce airport noise and promote compatible land uses near KCIA. Read the open house details on the right and register to attend the event. The study team will hold another open house this summer to share and receive input on the draft NCP developed out of the Noise Exposure Map process.

### OPEN HOUSE

March 20, 2025 5:30-7:30 p.m.

Flight Service Station  
6526 Ellis Avenue S., Seattle, WA 98108

Planning to join us? RSVP or register in advance at [KCIAPlanning.com](https://www.kcia.org/planning).

### Part 150 Study

NOISE AND LAND USE COMPATIBILITY STUDY

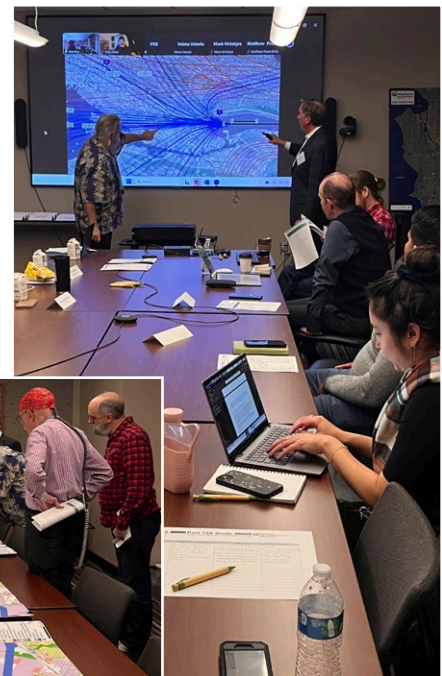
## Community-based organization interviews

Members of the study team held meetings with several representatives of community-based organizations (CBOs) and will conclude these meetings in early 2025. KCIA wants to ensure community-focused organizations are well-informed and share input on these studies. If you represent a CBO in the vicinity of KCIA and would like to schedule an interview, please email the study team at [KCIACommunityOutreach.gov](mailto:KCIACommunityOutreach.gov).

## Project Advisory Committee (PAC) updates

In early December 2024, the study team hosted PAC Meeting 4, which focused on the draft Part 150 Study Noise Exposure Maps (NEMs). The NEMs show noise exposure levels of aircraft operating at KCIA, both now and in the future, and how those noise exposure levels affect different land uses (e.g., residential housing and commercial properties).

PAC Meeting 5 will be held in late February 2025 to review the Vision 2045 Airport Plan Facility Requirements. Facility requirements establish what additional facilities an airport might need to meet future demand. Facility requirements look at all sectors of an airport including airside facilities (e.g., runways and taxiways), landside facilities (e.g., terminal, vehicle parking, roadways, and aircraft hangars), and support facilities (e.g., air traffic control, firefighting, and aircraft fueling).



continues >



# Vision 2045

AIRPORT PLAN UPDATE



# Part 150 Study

NOISE AND LAND USE COMPATIBILITY STUDY





## Upcoming opportunities to get involved

Stay engaged with our team as we move forward. Key dates include:


- Community-based organization interviews: October 2024 – February 2025
- Project Advisory Committee Meeting 5: February 26, 2025
- Open House 3: March 20, 2025


## Stay informed and share your thoughts


 Visit the Vision 2045 Airport Plan and Part 150 Study website: [KCIAPlanning.com](https://www.kcia-planning.com)  
 Email the KCIA project team: [KCIACommunityOutreach@kingcounty.gov](mailto:KCIACommunityOutreach@kingcounty.gov)


 Si desea más información en español, visite [KCIAPlanning.com/kcia-es](https://www.kcia-planning.com/kcia-es), o escanee.


 Para sa karagdagang impormasyon sa Tagalog mangyaring bisitahin [KCIAPlanning.com/kcia-tl](https://www.kcia-planning.com/kcia-tl), o i-scan.


 您了解更多信息 (中文)，請瀏覽 [KCIAPlanning.com/kcia-zh-tw](https://www.kcia-planning.com/kcia-zh-tw) 或掃描。


 Để tìm hiểu thêm bằng tiếng Việt, vui lòng ghé trang web [KCIAPlanning.com/kcia-vi](https://www.kcia-planning.com/kcia-vi) hoặc quét mã QR.


 想要了解更多中文信息，请访问 [KCIAPlanning.com/kcia-zh-cn](https://www.kcia-planning.com/kcia-zh-cn)，或扫描。


 សម្រាប់ការផ្តល់ព័ត៌មានបន្ថែមជាភាសាខ្មែរ សូមចូលមកកាន់ [KCIAPlanning.com/kcia-km](https://www.kcia-planning.com/kcia-km) ឬស្កេន QR កូដ។

**KCIA Vision 2045 Airport Plan and Part 150 Study - Public Comments (Last published on 1/28/2025)**

Updated 1/27/2025

Public comments are received through email (KCIACommunityOutreach@kingcounty.gov), the project website (KCIPlanning.com), phone calls, and public meetings and open houses.

| Comment/Inquiry  | Source                    | Category           | Response  | Received  | Responded  | Name            |
|--|---------------------------|--------------------|---|-----------|------------|-----------------|
| Is there a plan to expand tie-down and hangar space for small aircraft?  | Other                     | Airport operations | Question was asked and addressed during an Airport Strategic Plan public meeting.<br><br>Facility needs for general aviation aircraft storage will be developed in Vision 2045 through the facility requirements task, and potential options to address those needs will be included in the alternatives phase of the Plan.   | 6/11/2024 | 6/11/2024  | N/A             |
| Please address the shortage of small general aviation hangars and covered parking. There is a huge shortage of hangar space nationwide, and especially in the Seattle area. BFI has a 7+ year waitlist for hangars currently for example. The only construction I have seen at the airport is building new private hangars for FBOs and corporate jets, are there any plans to build more hangars for small GA planes?   | Other                     | Airport operations | Question was asked and addressed during an Airport Strategic Plan public meeting.<br><br>Facility needs for general aviation aircraft storage will be developed in Vision 2045 through the facility requirements task, and potential options to address those needs will be included in the alternatives phase of the Plan.   | 6/11/2024 | 6/11/2024  | N/A             |
| I'd like to see proposals on how Boeing can maximize utilization of the area. I look around and see many hangars that are significantly under-utilized (one plane in a large space). There are also many ramp areas in front of private hangars that are empty. This is a very large land area. It would be great to increase density for the benefit of all tenants. The proverbial, "ADU-like" density increases that are increasing housing density, but applied to aviation.   | Other                     | Airport operations | Question was asked during an Airport Strategic Plan public meeting. A project team member offered to relay the question to the Vision 2045 Airport Plan and Part 150 study team.<br><br>Future land use options for KCIA will be studied during the facility requirements and alternatives chapters of Vision 2045. However, generally KCIA does not address efficiency or uses within individual active leaseholds.  | 6/11/2024 | 6/11/2024  | N/A             |
| Alternative fuel sources are still largely in a developmental stage, but what infrastructure plans does the airport have for further integration of things like SAF, but also eventually things like electric power? Also how does the airport plan to upgrade its fuel handling and storage infrastructure to meet the demands of the next 10-20 years?   | Other                     | Airport operations | Question was asked and addressed during an Airport Strategic Plan public meeting.<br><br>Potential facility needs for emerging trends in the aviation sector such as increased integration of SAF, electrification, transition to unleaded fuel, and other aircraft fuel options will be developed in Vision 2045 through the facility requirements chapter, with potential options to address anticipated needs included in the alternatives chapter.  | 6/11/2024 | 6/11/2024  | N/A             |
| I am puzzled by the failure to cite aircraft emissions of particulate matter within this introductory material. I live on South Beacon Hill, and this is more of a concern than is the noise, which is obvious and constant.   | Project website           | Air quality        | The KCIA study team has included air quality in the Vision 2045 Goals and Objectives because it is a recognized concern of KCIA and the community. Vision 2045 will include an environmental overview that will document the air quality status in the region. As part of the Vision 2045 process, the team will develop and propose a series of projects that the airport could choose to build over the next 20 years. Before implementing any of these projects, federal law will require that KCIA do environmental analysis and additional public involvement as part of the National Environmental Policy Act (NEPA). NEPA requires that KCIA address air quality as an environmental resource during that process.<br><br>The Part 150 Study is a noise and land use compatibility study and that process must follow FAA guidance for the evaluation of aircraft noise. Air quality is not a consideration in the Part 150 Study process. | 8/20/2024 | 8/30/2024  | William Carrico |
| I live in magnolia, under the flight path to kcia when the winds are from the south. Freight and passenger jets fly in low and very loud during the early morning hours, like 4 to 6 AM. A few years back, FAA or whoever experimented with flight paths over Puget Sound. This seems to have been abandoned. It is quite disturbing to be jolted out of sleep. The PS alternative was touted as being very feasible but was defeated by air carriers. Please consider that we are in a very low altitude approach to the airport and that a very feasible alternative is very viable. | Project website           | Noise / Vibrations | The Part 150 Study team is accepting public comment related to noise surrounding the airport. If you would like your comments logged as part of the Part 150 Study process, please respond, and include your full name and street address so that we can log it in our system.  | 8/30/2024 | 9/10/2024  | George Kuhn     |
| Require planes to reduce noise even further (using technology upgrades and keeping flights within specific hours), and offer residences surrounding King County Airport with funds to improve their windows to reduce noise - and please don't do a shitty job of this like SeaTac did. The windows they installed for residences ended up being faulty and/or failed within a couple of years. South Beacon Hill is affected by the airports noise and air pollution.   | Project website           | Part 150 Study     | Thank you for your feedback. Feedback received will be considered in the Vision 2045 Airport Plan and the Part 150 Study. You were added to the email list to receive future updates on these studies.<br>King County International Airport (KCIA) is preparing a Part 150 Noise Study to evaluate noise around the airport and develop noise management measures for consideration.<br><br>Learn more about the Vision 2045 Airport Plan and Part 150 Study at KCIPlanning.com.  | 9/4/2024  | 9/23/2024  | N/A             |
| I can't find the specifics for either of these plans. In general, my first priority would be an immediate phase out of leaded fuel, because the health effects of lead are dramatic and proven. There are also studies on the health effects of noise, so I hope the Part 150 study is well-designed. Are you doing anything about the health or climate effects of the other aviation emissions (besides lead)? Those are critical as well. In short, KCIA has a long way to go to ensure the safety of residents.  | Project website           | Noise / Vibrations | The KCIA study team has included air quality in the Vision 2045 Goals and Objectives because it is a recognized concern of KCIA and the community. Vision 2045 will include an environmental overview that will document the air quality status in the region. As part of the Vision 2045 process, the team will develop and propose a series of projects that the airport could choose to build over the next 20 years. Before implementing any of these projects, federal law will require that KCIA do environmental analysis and additional public involvement as part of the National Environmental Policy Act (NEPA). NEPA requires that KCIA address air quality as an environmental resource during that process.<br><br>The Part 150 Study is a noise and land use compatibility study and that process must follow FAA guidance for the evaluation of aircraft noise. Air quality is not a consideration in the Part 150 Study process. | 9/4/2024  | 9/25/2024  | N/A             |
| Hopefully control noise because sometime (illegible) set up the (illegible) inside the house to check the noise. If can fix the windows.   | Part 150 Study Open House | Part 150 Study     | Thank you for attending the King County International Airport (KCIA) Part 150 Study Open House on Sept. 4 and sharing feedback. Feedback received will be considered in the Vision 2045 Airport Plan and the Part 150 Study. You were added to the email list to receive future updates on these studies.<br><br>Regarding window replacement as a noise mitigation measure, currently, KCIA does not offer a noise insulation and window replacement program. KCIA is preparing a Part 150 Noise Study to evaluate noise around the airport and develop noise management measures for consideration.<br><br>Learn more about the Part 150 Study and the Vision 2045 Airport Plan at KCIPlanning.com.   | 9/4/2024  | 10/15/2024 | Xuy Lam         |

| Comment/Inquiry  | Source                    | Category           | Response   | Received | Responded  | Name              |
|--|---------------------------|--------------------|--|----------|------------|-------------------|
| It would have been nice to have had a presentation giving a broad overview of what Part 150 and Vision 2045 were/are and then if I had an opportunity to hear from other folks. Giving what their questions are as an opportunity to formulate my questions. There is a lot of very high level info shared and I would have appreciated hearing more detailed granular info about both programs. As a homeowner on So Beacon Hill, were are significantly impacted by the KCIA noise and I was given none of this when I purchased in 2016. I look forward to the spring noise mapping updates.  | Part 150 Study Open House | Part 150 Study     | Request recording link from KCIA on 10/15: Thank you for attending the King County International Airport (KCIA) Part 150 Study Open House on Sept. 4 and sharing feedback. Feedback received will be considered in the Vision 2045 Airport Plan and the Part 150 Study. You were added to the email list to receive future updates on these studies.<br><br>The first public meeting and open house for the Vision 2045 Airport Plan and Part 150 Study was held on June 20. That meeting included a 20-minute overview presentation of both projects and a recording of the presentation is available on the project website.<br><br>Learn more about the Vision 2045 Airport Plan and Part 150 Study at <a href="http://KCIPlanning.com">KCIPlanning.com</a> . | 9/4/2024 | 10/16/2024 | Ronco Wong Cole   |
| Ear protection – headsets – for residents of affected neighborhood.<br><br>Triple pane windows are good for inside the house.<br><br>Neighbors need hearing protection outside too.  | Part 150 Study Open House | Part 150 Study     | Thank you for attending the King County International Airport (KCIA) Part 150 Study Open House on Sept. 4 and sharing feedback. Feedback received will be considered in the Vision 2045 Airport Plan and the Part 150 Study. You were added to the email list to receive future updates on these studies. Learn more at <a href="http://KCIPlanning.com">KCIPlanning.com</a> .   | 9/4/2024 | N/A        | N/A               |
| Your visual exhibits required too much information that seemed repetitive and not user friendly. The staff support was friendly though not really the best way to understand where we as homeowners are affected. I think another meeting with a primary speaker to explain in "simple language" how this "expansion" of this airport "may" affect all the neighbors who live around this area. Both positive and negative consequences specifically to us!! How will our daily lives change?? What new experiences are we going to have to learn to live with?<br><br>It would be helpful to have a slideshow of another community (anywhere in the USA) that had a similar experience with an airport and show us what happened to them?? Did the people feel good or bad about it? Were there problems and regrets? Did they feel it was a good thing and happy with the results?   | Part 150 Study Open House | Part 150 Study     | Thank you for attending the King County International Airport (KCIA) Part 150 Study Open House on Sept. 4 and sharing feedback. Feedback received will be considered in the Vision 2045 Airport Plan and the Part 150 Study. You were added to the email list to receive future updates on these studies. Learn more at <a href="http://KCIPlanning.com">KCIPlanning.com</a> . Did not request a response.   | 9/4/2024 | N/A        | N/A               |
| Thanks for the open house.<br><br>I know there was a noise insulation/windows offered to residents awhile back. If there is any updates of if this is still available can you let the Georgetown residents know? I haven't heard of any big complaints but there are lots of new people in the neighborhood so if there are any benefits they should be aware of that would be helpful.  | Part 150 Study Open House | Part 150 Study     | Thank you for attending the King County International Airport (KCIA) Part 150 Study Open House on Sept. 4 and sharing feedback. Feedback received will be considered in the Vision 2045 Airport Plan and the Part 150 Study. You were added to the email list to receive future updates on these studies.<br><br>Regarding home insulation and window replacement as a noise mitigation measure, currently, KCIA does not offer a noise insulation and window replacement program. KCIA is preparing a Part 150 Noise Study to evaluate noise around the airport and develop noise management measures for consideration.<br><br>Learn more about the Vision 2045 Airport Plan and Part 150 Study at <a href="http://KCIPlanning.com">KCIPlanning.com</a> .      | 9/4/2024 | 10/15/2024 | Heather Carney    |
| Thanks for hosting the open house. Very informative and good to see that there is a lot of thought going into planning for the future and that there is strong concern for mitigating potential negative effects that could be associated with airports, aircraft noise and patterns etc.<br><br>Much appreciated as a very close neighbor.<br><br>As an aside, generally I think the airport is doing a great job at being a good neighbor. I can think of only one recent example where I have had a concern of any kind. A very large helicopter was uncomfortably close to our house, close enough that I felt unsafe - it sounded like they could potentially collide with the house. I hope the altitude rates are being followed. "David" advised reporting any future (illegible) so the airport is aware - good advice.<br><br>Also - just stated a (hopeful) preference that the airport might become a major hub for a larger passenger air transport (illegible)<br><br>Thanks again, keep up the good work! | Part 150 Study Open House | Part 150 Study     | Thank you for attending the King County International Airport (KCIA) Part 150 Study Open House on Sept. 4 and sharing feedback. Feedback received will be considered in the Vision 2045 Airport Plan and the Part 150 Study. You were added to the email list to receive future updates on these studies. Learn more at <a href="http://KCIPlanning.com">KCIPlanning.com</a> .   | 9/4/2024 | N/A        | N/A               |
| Thank you for doing this kind of events to listen to the opinions of residents of this area.<br><br>I live in New Holly since 2001. It is a beautiful area near all services like airports, highway, schools, my job, my wife's job, my son's job.<br><br>Thank you for conducting this study. We hope there will be an approved budget to help reduce the noise, like the one we have when our windows shake from airplanes.  | Part 150 Study Open House | Part 150 Study     | Thank you for attending the King County International Airport (KCIA) Part 150 Study Open House on Sept. 4 and sharing feedback. Feedback received will be considered in the Vision 2045 Airport Plan and the Part 150 Study. You were added to the email list to receive future updates on these studies. Learn more at <a href="http://KCIPlanning.com">KCIPlanning.com</a> .   | 9/4/2024 | N/A        | N/A               |
| Regarding<br>- Flight school orbits over house<br>- Single Engine small planes<br>- fly very low over house<br>- Blue tail and red tail planes<br>- Both extremely loud and low  | Part 150 Study Open House | Part 150 Study     | Thank you for attending the King County International Airport (KCIA) Part 150 Study Open House on Sept. 4 and sharing feedback. Feedback received will be considered in the Vision 2045 Airport Plan and the Part 150 Study. You were added to the email list to receive future updates on these studies. Learn more at <a href="http://KCIPlanning.com">KCIPlanning.com</a> .   | 9/4/2024 | 10/15/2024 | Charles Schilling |
| Will worsen noise and toxic pollutants in the air in our neighborhood. I oppose any expansion. I agree that it needs to close or reduce size of jets landing and departing from KCIA!  | Project website           | Airport operations | Thank you for your feedback. Feedback received will be considered in the Vision 2045 Airport Plan and the Part 150 Study. You were added to the email list to receive future updates on these studies. Learn more at <a href="http://KCIPlanning.com">KCIPlanning.com</a> .  | 9/8/2024 | 9/23/2024  | Arnold            |

| Comment/Inquiry   | Source                     | Category           | Response  | Received  | Responded  | Name            |
|---|----------------------------|--------------------|---|-----------|------------|-----------------|
| <p>Hello and thanks for taking the time for this study. I live on Finn Hill (Kenmore/Kirkland) and Finn Hill is over 500 feet in many spots (one of the tallest hills (residential even) in the whole region (Seattle and Eastside). I read there were previous studies and sound sensors put out I guess, but didn't see any sensors or notice given to anyone in Finn Hill in the past for flight path changes ("greener skies" I think it was called?) or other input even though the planes constantly are flying over our houses more and more in past few years all day and night on the "south flow" approach I think it would be.</p> <p>WHY route so many flights over the tallest hill? I called in a few years ago and they said the 4 am runs are shipping flights most likely and I notice those flights the most b/c they literally wake us up a few times per week (especially when they do these hard banks where you can hear the wind shear against the wings it's so loud...sounds like the wings are going to break off my friend who lives on Finn Hill said when we were talking about it). On sunny days, we can literally read the large writing on the planes from the ground they are so low at times.</p> <p>Not sure of the laws related to how low planes can fly when not taking off or landing, but having these planes constantly buzz our houses when we aren't even close to KCIA or SeaTac is a huge growing burden for our neighborhoods up here.</p> <p>My suggestion is just to just have the planes turn BEFORE the end of Lake Washington so they are banking over the water or they can fly just past Finn Hill following I-405 North and then turn left (West) above HWY-522 so the planes are always above major highways and businesses on their turn instead of going right above all of our homes that are very close b/c of the height of Finn Hill.</p> <p>IT'S ONLY A FEW SECONDS LONGER FLIGHT NORTH TO AVOID FINN HILL before there turn I'm saying, so seems very reasonable and doable I'd think.</p> <p>I'll paste a picture I found online and seems like everyone has less traffic now except Finn Hill on NE side of Lake Washington cannot even be seen any more b/c of all of the flights. Greener Skies was on the picture, but even before that, I still question having planes flying so low over so many homes that aren't even close to KCIA/SeaTac as part of normal flight patterns especially.</p> <p>I see there was a meeting, but hoping my input can be reviewed and incorporated into the Part 150 study even though I missed the meeting. Thank you for any relief you can give.</p> | Project email              | Air traffic        | <p>Thank you for your email. We do have some boards on the Part 150 study process that will be on the project website soon. They go into a little more depth on how the noise is calculated, and we can let you know when they are live on the website. We are still in the early stages, so we don't yet know where the noise is and what level it is at.</p> <p>SEA Airport is also doing the same study SEA Part 150 – Noise Study and due to your location and flight paths I suggest you submit your comments to them also to make sure they are incorporated into both plans.</p>   | 9/11/2024 | 9/18/2024  | CW              |
| <p>Per "Part 150 Study next steps", it mentioned that the Team will share the NEMs with the PAC ahead of time. I'm curious if the documents have been shared to the community yet</p>   | Project website            | Part 150 Study     | <p>It is anticipated that the Draft NEMs will be presented to the PAC members in December 2024 and presented at a public meeting in early 2025. Both the PAC members and public will be able to review and comment on the NEMs and have an opportunity to ask questions about the draft NEMs before they are submitted to FAA for review and approval. It is anticipated that the draft NEMs would be submitted to FAA for review and approval in early 2025.</p>   | 10/8/2024 | 10/31/2024 | Bonney Chau     |
| <p>I am concerned about the amount of increase of flights coming and going. This increases sound and air pollution. Many people live very close to the airport, schools, children.</p>  | Project website            | Air traffic        | <p>It is anticipated that the Draft NEMs will be presented to the PAC members in December 2024 and presented at a public meeting in early 2025. Both the PAC members and public will be able to review and comment on the NEMs and have an opportunity to ask questions about the draft NEMs before they are submitted to FAA for review and approval. It is anticipated that the draft NEMs would be submitted to FAA for review and approval in early 2025.</p>   | 10/8/2024 | 10/31/2024 | Laure Thies     |
| <p>During the Vision 2045 Airport Plan and Part 150 Study PAC #4 meeting on December 3, 2024, a PAC member referenced noise contours from the 1990s that they said showed an area of increased noise toward the Duwamish River, just at the end of Georgetown. The question was asked why that area is not shown on the 2023 and 2030 Noise Exposure Maps (NEMs).</p>   | Project Advisory Committee | Noise / Vibrations | <p>The study team looked at data from the 2004 Supplemental Part 150 Study. In looking at the data, there are two possible reasons why the previous contours extended close to the Duwamish River:</p> <p>The first set of data shows that the 1999 modeling included around 6,000 Stage 2 aircraft with the loudest of Stage 2 aircraft being the DC-8s operated by Airborne Express. The current NEMs do not have any Stage 2 aircraft in the fleet because of the Congressional mandate to phase out all Stage 2 aircraft after December 31, 2015.</p> <p>The second set of data is associated with the time of day of aircraft operations. When the previous study was conducted, the best available data was used which included limited information about the time-of-day flights occurred. The consultant may have estimated the number of daytime and nighttime flights based on discussions with aircraft operators (cargo airlines). This approach was commonly used in the industry when the 2004 Supplemental Part 150 Study was conducted because there was not as much data available then as there is today. Doing some quick math, this data equates to about 22,500 annual nighttime Stage 2 aircraft operations modeled in the 2004 study.</p> <p>While the study team cannot pinpoint exactly what the previous consultant modeled in the 2004 Supplemental Part 150 Study, the datapoints referenced above are likely to have resulted in a larger contour that included the areas you noted north of KCIA.</p> | 12/4/2024 | 1/23/2025  | Randy Eatherton |

| Number  | Name                        | PM        | YTD Actuals | \$ Annual Variance | % Annual Variance | Key Activities - Current Quarter   | Closely Monitored Issues and Key Risks  |
|---------|-----------------------------|-----------|-------------|--------------------|-------------------|--|---|
| 1028653 | PAVEMENT REHABILITATION     | Khalili   | -\$915      | -\$970,101         | -97%              | Ongoing program. Quarterly Activities managed through sub projects   | Ongoing program. Risks managed through sub projects   |
| 1028654 | LOOP BLDG REMEDIATION       | Cracknell | \$0         | \$912,000          |                   | Review bids and select subconsultant for HazMat abatement  | Building is contaminated with asbestos and lead. Sampling will reveal level of effort for safely abating the building.  |
| 1028662 | NORTH BOEING FIELD MTCA     | Dumaliang | \$75        | -\$113,183         | -74%              | Slip 4 source control work to include PFAS Investigation.  | Key risk is Ecology request for additional work as PLP. Current request is PFAS investigation.  |
| 1119982 | AIRPORT REDEVELOPMENT       | Dumaliang | \$176       | -\$46,659          | -19%              | Ongoing program. Quarterly Activities managed through sub projects The ART Permitting continues. The FSS HVAC Repl & Solar is slated to complete this quarter.   | Ongoing program. Risks managed through sub projects. For FSS, stakeholders have requested the design team to assess the feasibility of having the solar array feed the car chargers, the design team is currently reviewing this. This would cost the project additional funds and add additional days to the design schedule.  |
| 1120212 | NBF GTSP REMEDIAL ACTION    | Dumaliang | \$75        | -\$5,572           | -12%              | RI Report to be completed. MTCA Grant reimbursements. Start of Feasibility Study.  | The scope of this project is dependent on the north Boeing field remedial investigation and feasibility study. Cleanup operations to occur after in a separate order.   |
| 1120730 | AIRPORT FACILITIES REPAIR   | Khalili   | -\$361,513  | \$1,277,242        | 177%              | Ongoing program. Quarterly Activities managed at the annual basis through sub project  | Ongoing program. Risk managed at the annual basis through sub project   |
| 1120731 | AIRPORT FLEET               | Bartley   | \$3,923     | -\$1,268,689       | -42%              | Ongoing program. Quarterly Activities managed through sub projects   | Ongoing program. Risks managed through sub projects   |
| 1120732 | LOWER DUWAMISH WATERWAY     | Dumaliang | -\$7,969    | -\$90,750          | -70%              | Ongoing program. Quarterly Activities managed through sub projects. Prepare work order for 2025 sampling.  | Ongoing program. Risks managed through sub projects   |
| 1135085 | RUNWAY 14L-32R REHAB        | Miller    | \$915,839   | -\$6,253,289       | -23%              | Ensure all materials have been ordered and delivered, finalize construction schedule, hold preconstruction meeting, and commence construction by March 15th (with mobilization occurring in early March).  | FAA has not previously submitted timely reviews, if timely responses are not received this could further delay the project. Invoices from RS&H have been severely delayed, Ginny and I met with RS&H to clarify their responsibilities and chart out a path to get back on track. RS&H will be required to submit monthly invoices for each month to catch up.  |
| 1137242 | AIRFIELD ELECTRICAL UPGRDES | Dumaliang | -\$3,660    | \$1,493,346        | 902%              | Ongoing program. Quarterly Activities managed through sub projects. Airfield Electrical Project Phase III is planning to complete work this quarter.   | Ongoing program. Risks managed through sub projects. In December 2024, the project was to be ended early with ALCMS completion in 1Q/2Q 2025 and remaining scope cancelled.   |
| 1138851 | ASSET MANAGEMENT PROGRAM    | Dumaliang | \$0         |                    | 0%                | Ongoing program. Quarterly Activities managed through sub projects. Asset Management Framework project closure.  | Ongoing program. Risks managed through sub projects. Final payments to be made before project closeout.   |
| 1139512 | TAXIWAY B RELOCATION        | Miller    | \$1,390     | \$4,899,898        | 1558%             | Advertise the A&E contract, perform proposal evaluation and issue notice of intent to award to the selected consultant. Receive FAA approval on the Alternative Project Delivery method, and advertise the OA contract. Continue with Section 7 consultation, and the initial steps of the NEPA process. | Coordination with tenants for work on their leaseholds will require the project team to incorporate the tenants standards into the project. If the tenant is not willing to coordinate or does not provide timely feedback the project could be delayed.<br><br>This project will require very close coordination with the FAA which can cause delays if their reviews exceed the standard timeframes.  |
| 1139534 | KCIA CLIMATE ACTION PLAN    | Dumaliang | \$433       | \$71,743           | 64%               | Ongoing program. Quarterly Activities managed through sub projects.  | Ongoing program. Risks managed through sub projects   |
| 1139536 | AIRPORT STORMWATER PROGRAM  | Dumaliang | -\$396,551  | \$2,750,003        | 7857%             | Ongoing program. Quarterly Activities managed through sub projects   | Ongoing program. Risks managed through sub projects   |
| 1139545 | AIRPORT SECURITY PROGRAM    | Harris    | \$0         | \$1,456,311        | 7281554900%       | Executing construction work orders to update fences and support one future project<br><br>1. Loop building gate and fence<br><br>2. Budget for a future standalone contract.   | Schedule could impact available budget as WO contract expires in May.   |
| 1139547 | WATER AND SEWER MGT SYSTEM  | Khalili   | \$0         | -\$250,000         | -100%             | Ongoing program. Quarterly Activities managed through sub projects   | Ongoing program. Risks managed through sub projects   |
| 1141114 | A11 CONNECTOR RECONST       | Miller    | \$5,977     | -\$1,203,649       | -98%              | Finalize permit, advertise the construction contract, receive and evaluate the construction bids, issue notice of intent to award.   | Central Procurement was delayed in reviewing the documents, and if this pattern continues it will delay the project. King County Permitting also has not started their review and if this trend continues could delay the project.  |
| 1141122 | STRMWTR PIPE REPLCMT PH III | Dumaliang | -\$396,849  | -\$1,678,427       | -42%              | Work suspension initiated from Nov-Mar. Resume progress meetings on March 2025 prior to start of work. Tentative schedule to sequence Work areas 7 & 8 in March 2025 and Work Areas 2 & 3 in July 2025.  | Schedules for construction projects are being planned for next year and a schedule to be provided to avoid impacts with other projects.   |
| 1141128 | AIRPORT WAY STORMWATR INPUT | Dumaliang | \$298       | -\$151,649         | -29%              | Execute design amendment and proceed to design and bid support.  | The design of the project will include capacity improvements of Drainage basin 3 from offsite drainage. This will improve the capacity of the stormwater system. The Taxiway Bravo project in the future will benefit from the improved stormwater capacity and reduce the need for major capacity improvements for the project. Additional scope of VSR realignment and pavement construction added to scope will increase cost. Budget submission for construction submitted. |
| 1141154 | CARBON ACCREDITATN STUDIES  | Dumaliang | \$335       | -\$32,313          | -16%              | Continue Level 3 work. Procure third party contractor for certification.   | KCIA has to continually demonstrate emission reductions, which is currently not shown in our emission trends.   |
| 1141157 | CLIMATE PREPARDNSS STUDIES  | Dumaliang | \$0         | -\$48,957          | -72%              | USGS monitoring of Airport groundwater levels.   | None.   |
| 1141164 | AIRFD ELEC SYS UPGDE PH III | Dumaliang | -\$3,660    | -\$1,572,894       | -53%              | Work suspension Nov-Feb. Resume work on March with progress meetings. Schedule to come out in a week or so. Work with on extending Designer contract by 2/28   | Storage of products already purchased.  |
| 1141172 | ASSET MGT FRAMEWORK         | Dumaliang | \$0         | -\$34,011          | -100%             | Asset Management Framework project closure.  | Final payments to be made before project closeout.  |
| 1141346 | KCIA AIR MONITORING PLAN    | Cracknell | \$97        |                    |                   | Project is complete.   | None  |

|         |                             |                |            |              |       |   |   |
|---------|-----------------------------|----------------|------------|--------------|-------|---|---|
| 1141350 | STRMWTR FACLTY CLEANING     | Dumaliang      | \$0        |              | 0%    | Prepare contract and schedule for 3Q cleaning.  | Review status of universal contract for 2025 work.  |
| 1141353 | STRMWATR LINE/CB CLEANING   | Dumaliang      | \$0        | -\$180,000   | -100% | No activity. Project completed and will be moved to operating budget in 2025  | Work with Contracts on the use of the VPC contract.   |
| 1141355 | SLIP 4 SOURCE CONTRL INVEST | Dumaliang      | \$0        | -\$107,611   | -100% | complete work.  | This work will be performed with PAO oversight and reviews.   |
| 1142941 | ART PERMITTING              | Khalili        | \$0        | \$6,000      | 3%    | Ongoing support for existing projects during the permitting stage. If any permitting agencies require additional fees or support, this will be handled exclusively for the existing projects still under the ART team's responsibility. | N/A   |
| 1143915 | RUNWAY 14R-32L REHAB        | Miller         | -\$6,915   | \$1,820,833  | 439%  | Finalize the NEPA and planning phase documents. Finalize negotiations for the Phase 2 Design contract and submit to the FAA for approval.   | FAA ADO review is required at various points throughout the project, which can sometimes take months, which would delay the project. Timely responses from the FAA ADO are required. Timely responses and review from the King County Department of Permitting are also required, or the project will face delays.  |
| 1143917 | WANG SITE REHAB             | Sanchez Yubero | \$118      | -\$883,968   | -27%  | Procurement for the Seismic Assessment (201 Building). FMD-GLY  | This project was originally planned for the 2026-27 budget and we need to appropriate additional funds to start the work now.<br>The current plan is for FMD to take over project management and delivery. Managing this relationship will be key to the projects success<br>We are currently performing a soil liquefaction analysis, pending the results of the analysis the project will move forward or the project will need to be modified to fix the issues. |
| 1143931 | AIRPORT INFO MGT PROGRAM    | Harris         | \$0        |              | 0%    | Create digital asset standards for publishing continued   | Budget has caused a search for new consultant services.   |
| 1143948 | VISION 2045/PART 150 STUDY  | Bartley        | -\$734,906 | -\$874,733   | -34%  | Finalize Facilites Requirements<br>Draft Alternatives<br>Develop NCP  | Community and Tennent Engagement will be a major focus of this project. There will be high visibility with the Executive's Office and Council on this project. Will need to work closely with the FAA ADO on the aviation forecast and ALP approval to stick on schedule.   |
| 1143950 | AIRPORT PLANNING/SUPPORT    | Bartley        | \$24,914   | \$566,488    | 500%  | NA  | Most of the budget is contingency for "pop-up" projects so project spend is unknown.  |
| 1146188 | FSS HVAC SYS REPL & SOLAR   | Sanchez Yubero | \$176      | -\$1,011,618 | -99%  | Procurement process (ESPC and/or JOC)   | Stakeholders have requested the design team to assess the feasibility of having the solar array feed the car chargers, the design team is currently reviewing this. This would cost the project additional funds and add additional days to the design schedule.  |
| 1146412 | TAXIWAY B SINKHOLE REPAIR   | Sanchez Yubero | \$0        | -\$201,250   | -100% | N/A   | Risks to immediate fix include delays due to material availability and executing a change order with additional costs.<br><br>Risk of recurrence if a permanent fix is not implemented in the next 5-7 years. 7 years absolute max.   |
| 1146512 | PAVEMENT REHAB 2023 2024    | Sanchez Yubero | \$118      | -\$1,019,600 | -100% | Implementation of the following WOs:<br>1. Pavement Repair at VSR near UPS Ramp<br>2. Pavement Repair at VSR next to Taxiway A2   | Lack of bidders - central procurement recommended the time and materials approach to attract more bidders the next time<br><br>Procurement delays - because this is a similar scope and tech specifications to the last time we hope to minimize procurement delays due to reviews.   |
| 1146794 | AIRPORT STRATEGIC PLAN      | Bartley        | \$24,914   | -\$134,616   | -41%  | Review and revise draft document.   | Tight schedule to meet all requirements and be delivered in close coordination with Vision 2045. There will be a lot of overlapping community engagement for both these projects at the same time.  |
| 1146797 | 2024 FLEET VEHICLE PRCHS    | Fotheringill   | \$0        |              |       | Q1 2025<br>Take delivery of the Oshkosh Volterra Striker Hybrid Fire Truck<br>Take Delivery of 5 Chevy Silverados for ARFF<br>Monitor Purchase of Dump Truck Swap Loader  | Estimated timelines for vehicle delivery from manufacturer and in service dates<br>Estimated costs for upfitting versus actuals<br>Run time reports for vehicles monthly  |
| 1146861 | PLANNING PRGM CIP ADMIN     | Bartley        | \$0        | -\$26,000    | -100% | Closeout the project number   | Closing out old WOs and balancing work with new master WOs  |
| 1146883 | LDW SOURCE CNTRL SMPLNG     | Cracknell      | -\$7,969   | -\$25,750    | -74%  | Sampling plan and HASP will be sent for review. Sampling date will be dependent on dry weather.<br>Sampling completed on 11/27/2024   | Sampling is weather dependent. High rains cause increased flows in stormwater system, creating an unsafe environment for consultant to collect solids.<br>Sampling was conducted on a dry day (no precipitation) and pump stations were turned off as an added layer to safety.<br>Sampling complete for 2024.  |
| 1146953 | FAC SPU BACKFLOW            | Khalili        | -\$361,513 | -\$480,800   | -100% | Closeout phase  | N/A   |
| 1147071 | SENSUS WATER METER INSTALL  | Khalili        | \$0        | -\$6,000     | -100% | We plan to replace additional meters as materials and the third-party contractor become available.  | The risks associated with this project include the availability of the third-party installer, lead time for obtaining additional meters, and potential shipping delays during the winter season, which could be critical to the project timeline.   |
| 1147360 | SW FLOW MONITORING 2023/24  | Dumaliang      | \$36,416   |              |       | Data review and reporting to conclude project.  | Work order expires in March of 2025.  |
| 1147373 | DIGITAL ASSET STANDARDS     | Harris         | \$0        |              |       | Execute Work order and proceed with requirements gathering.<br>Complete first draft of standards and templates<br><br>Incorporate corrections for standards document and templates. Deliver final product and close.                    | Delivery of standards<br>Lack of budget is creating issue with consultant selection.  |
| 1148879 | ARFF MODFCTNS EV CHRNG STN  | Bartley        | \$0        |              |       | Preform load test using fancy new load sensors<br>Closeout  | Schedule, the truck will arrive in December<br>Lack of communication with the manufacturer  |

|         |                             |                |          |            |       |  |   |
|---------|-----------------------------|----------------|----------|------------|-------|--|---|
| 1148966 | KENMORE HANGAR DEMO         | Bartley        | \$0      |            |       | Start and complete NEPA<br>Continue Negotiations for Demo<br>Start demo (if weather permits) | Unknown   |
| 1141137 | ROSSO FENCE REPL            | Khalili        | \$0      | -\$300,708 | -100% | Project Closeout   | N/A   |
| 1146863 | LAP UPS AREA PENDING REMDTN | Sanchez Yubero | -\$7,009 | -\$300,000 | -100% | N/A  | Contract Procurement depend on FMD ,any delay from FMD will impact the Schedule |
| 1147298 | ATCT/SW AIRPARK COND ASSESS | Harris         | \$0      | -\$239,400 | -100% | Closed   | None  |

## KCIA Revenues 2024

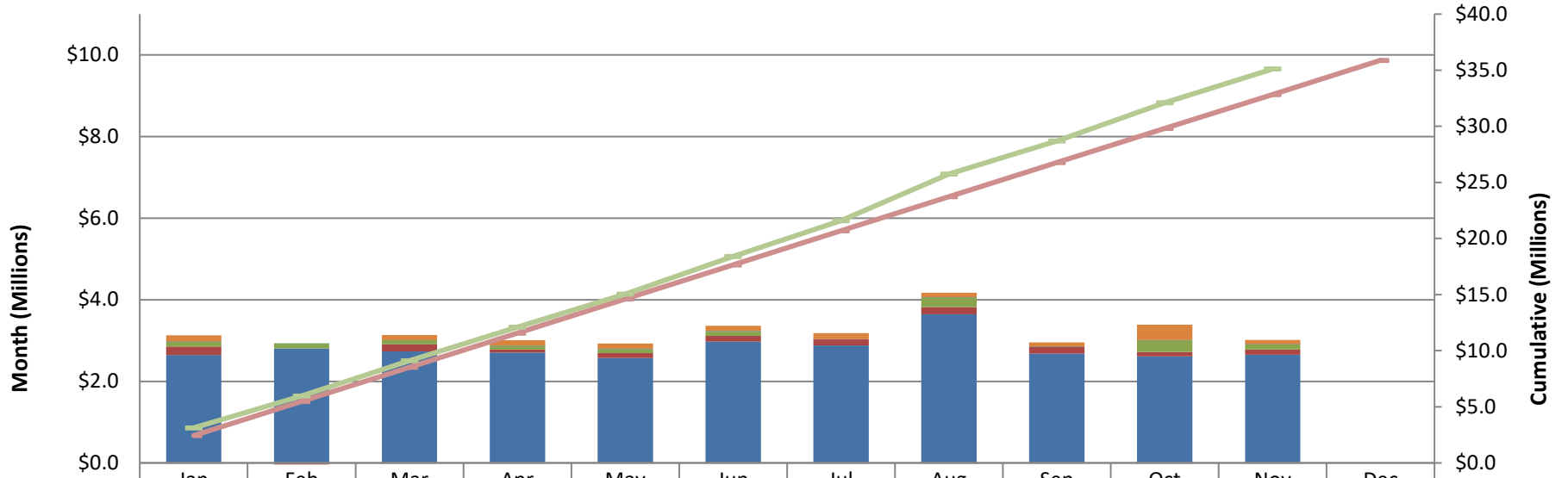


Table in Thousands

|                   | Jan   | Feb   | Mar   | Apr    | May    | Jun    | Jul    | Aug    | Sep    | Oct    | Nov    | Dec    |
|-------------------|-------|-------|-------|--------|--------|--------|--------|--------|--------|--------|--------|--------|
| Other             | 145   | -26   | 119   | 127    | 128    | 127    | 144    | 106    | 99     | 378    | 99     |        |
| Transient Parking |       |       |       |        | 6      | 5      | 5      | 5      | 5      | 4      | 4      |        |
| Interagency Rent  | 2     |       | 3     | 2      | 2      | 2      | 2      | 2      | 2      | 2      | 2      |        |
| Landing fees      | 130   | 125   | 105   | 97     | 100    | 111    |        | 242    |        | 287    | 133    |        |
| Fuel Fees         | 203   | -59   | 177   | 76     | 119    | 144    | 149    | 171    | 167    | 106    | 127    |        |
| Lease             | 2,646 | 2,804 | 2,730 | 2,703  | 2,572  | 2,972  | 2,881  | 3,643  | 2,679  | 2,615  | 2,651  |        |
| Cumu Budget       | 2,439 | 5,480 | 8,520 | 11,560 | 14,601 | 17,641 | 20,682 | 23,722 | 26,762 | 29,803 | 32,843 | 35,884 |
| Cumu Total        | 3,127 | 5,971 | 9,106 | 12,112 | 15,039 | 18,399 | 21,580 | 25,749 | 28,701 | 32,092 | 35,107 |        |



## KCIA Expenditures 2024

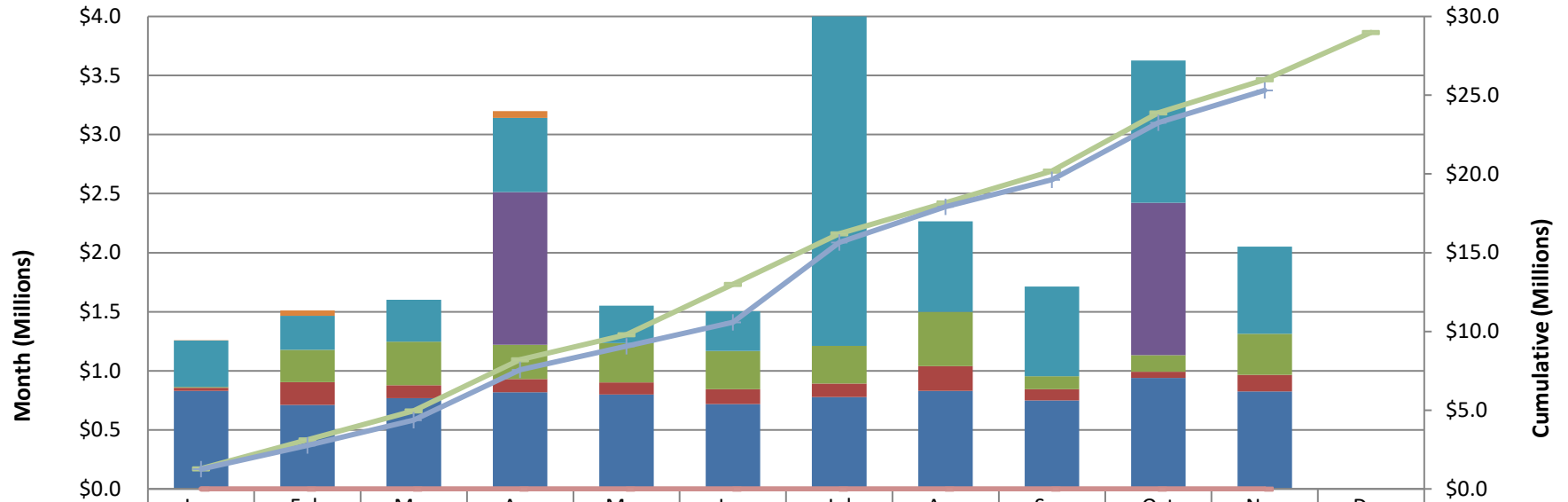
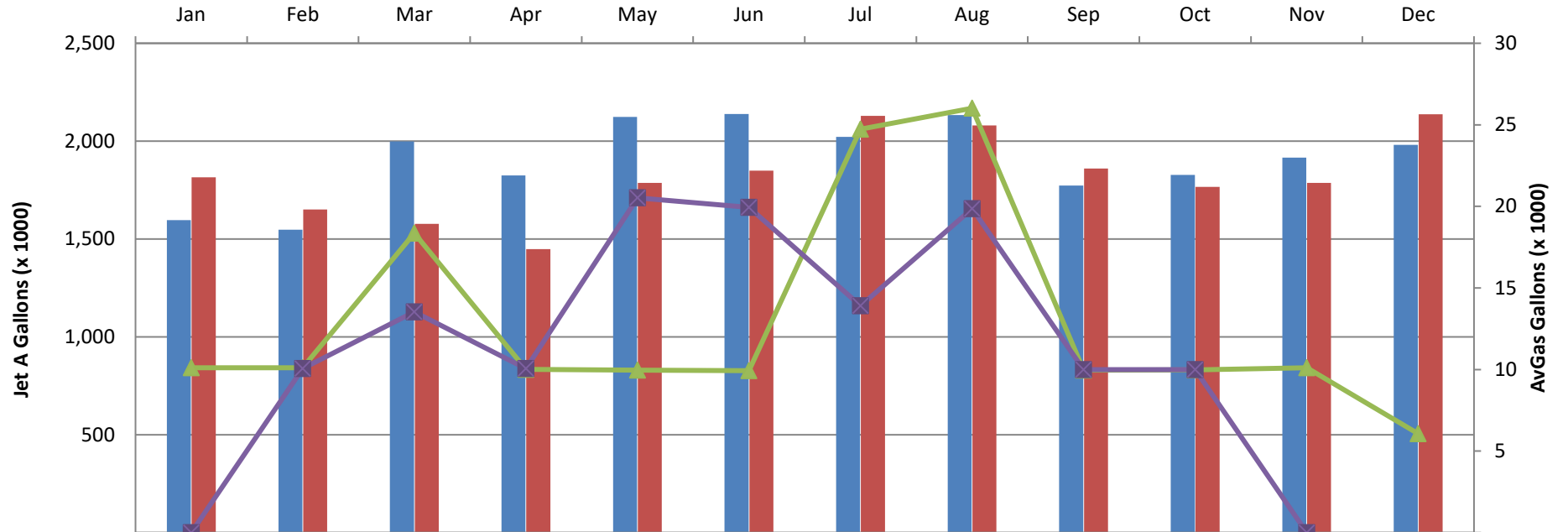


Table in Thousands

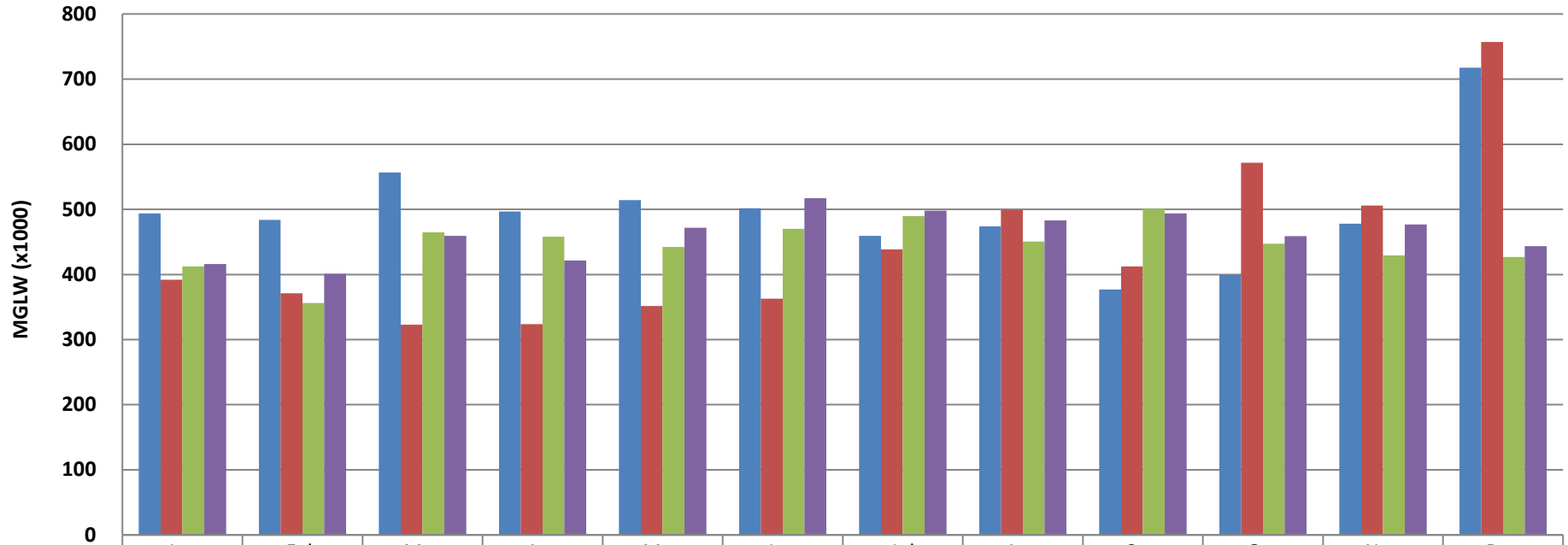
|                   | Jan   | Feb   | Mar   | Apr   | May   | Jun    | Jul    | Aug    | Sep    | Oct    | Nov    | Dec    |
|-------------------|-------|-------|-------|-------|-------|--------|--------|--------|--------|--------|--------|--------|
| Capital Outlays   | 1     | 46    |       | 57    | -48   |        |        |        |        |        |        |        |
| Intergovernmental | 391   | 289   | 356   | 629   | 317   | 335    | 3,864  | 767    | 758    | 1,205  | 738    |        |
| Seattle SWM Fee   |       |       |       | 1,291 |       |        |        |        |        | 1,291  |        |        |
| Services          | 9     | 274   | 369   | 292   | 334   | 323    | 319    | 461    | 111    | 140    | 349    |        |
| Supplies          | 24    | 193   | 109   | 111   | 102   | 127    | 112    | 208    | 96     | 52     | 141    |        |
| Salaries/benefits | 831   | 710   | 768   | 818   | 799   | 718    | 779    | 831    | 748    | 939    | 824    |        |
| Debt Service      |       |       |       |       |       |        |        |        |        |        |        |        |
| Cumu Budget       | 1,290 | 3,120 | 4,966 | 8,200 | 9,801 | 12,988 | 16,201 | 18,164 | 20,192 | 23,886 | 25,985 | 28,985 |
| Cumu Total        | 1,256 | 2,768 | 4,371 | 7,570 | 9,072 | 10,575 | 15,649 | 17,915 | 19,628 | 23,255 | 25,307 |        |

## KCIA Fuel Volumes 2023-2024



|            | Jan   | Feb   | Mar   | Apr   | May   | Jun   | Jul   | Aug   | Sep   | Oct   | Nov   | Dec   |
|------------|-------|-------|-------|-------|-------|-------|-------|-------|-------|-------|-------|-------|
| 2023 Jet-A | 1,596 | 1,548 | 1,998 | 1,825 | 2,123 | 2,139 | 2,022 | 2,133 | 1,774 | 1,827 | 1,916 | 1,982 |
| 2024 Jet-A | 1,815 | 1,651 | 1,577 | 1,449 | 1,786 | 1,849 | 2,129 | 2,080 | 1,859 | 1,767 | 1,787 | 2,138 |
| 2023 AvGas | 10    | 10    | 18    | 10    | 10    | 10    | 25    | 26    | 10    | 10    | 10    | 6     |
| 2024 AvGas |       | 10    | 14    | 10    | 21    | 20    | 14    | 20    | 10    | 10    |       |       |

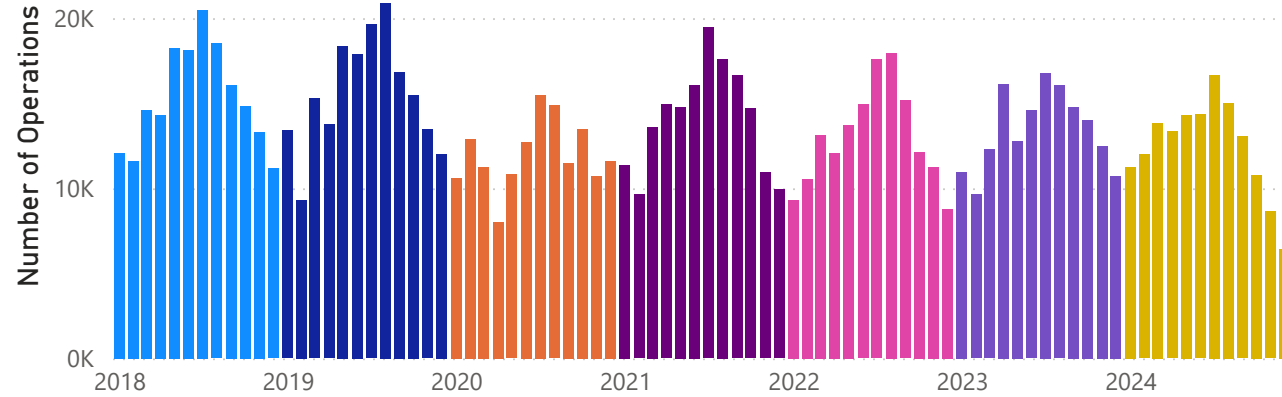
## Billable Landed Weight 2023-2024



|                  | Jan    | Feb    | Mar    | Apr    | May    | Jun    | Jul    | Aug    | Sep    | Oct    | Nov    | Dec    |
|------------------|--------|--------|--------|--------|--------|--------|--------|--------|--------|--------|--------|--------|
| ■ 2023 Cargo     | 49,359 | 48,362 | 55,664 | 49,679 | 51,397 | 50,170 | 45,917 | 47,383 | 37,695 | 39,935 | 47,816 | 71,737 |
| ■ 2024 Cargo     | 39,199 | 37,102 | 32,298 | 32,369 | 35,174 | 36,292 | 43,837 | 49,912 | 41,216 | 57,158 | 50,573 | 75,697 |
| ■ 2023 Non-Cargo | 41,216 | 35,634 | 46,470 | 45,798 | 44,211 | 47,017 | 48,945 | 45,071 | 50,069 | 44,726 | 42,943 | 42,689 |
| ■ 2024 Non-Cargo | 41,584 | 40,099 | 45,931 | 42,145 | 47,168 | 51,698 | 49,787 | 48,293 | 49,359 | 45,890 | 47,659 | 44,347 |

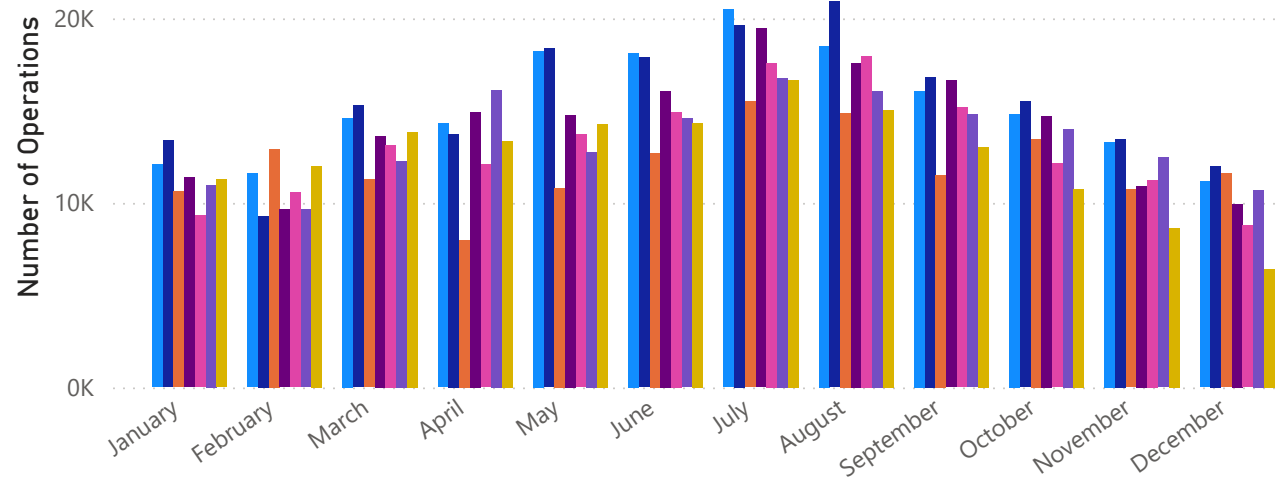
## Total Flight Operations 2018 - Present

● 2018 Total ... ● 2019 Total ... ● 2020 Total ... ● 2021 Total ... ● 2022 Total ... ● 2023 Tot... ● 2024 Tot...



## Total Flight Operations Comparison

● 2018 Total ... ● 2019 Total ... ● 2020 Total ... ● 2021 Total ... ● 2022 Total ... ● 2023 Tot... ● 2024 Tot...



## Total Flight Operations 2018 - Present

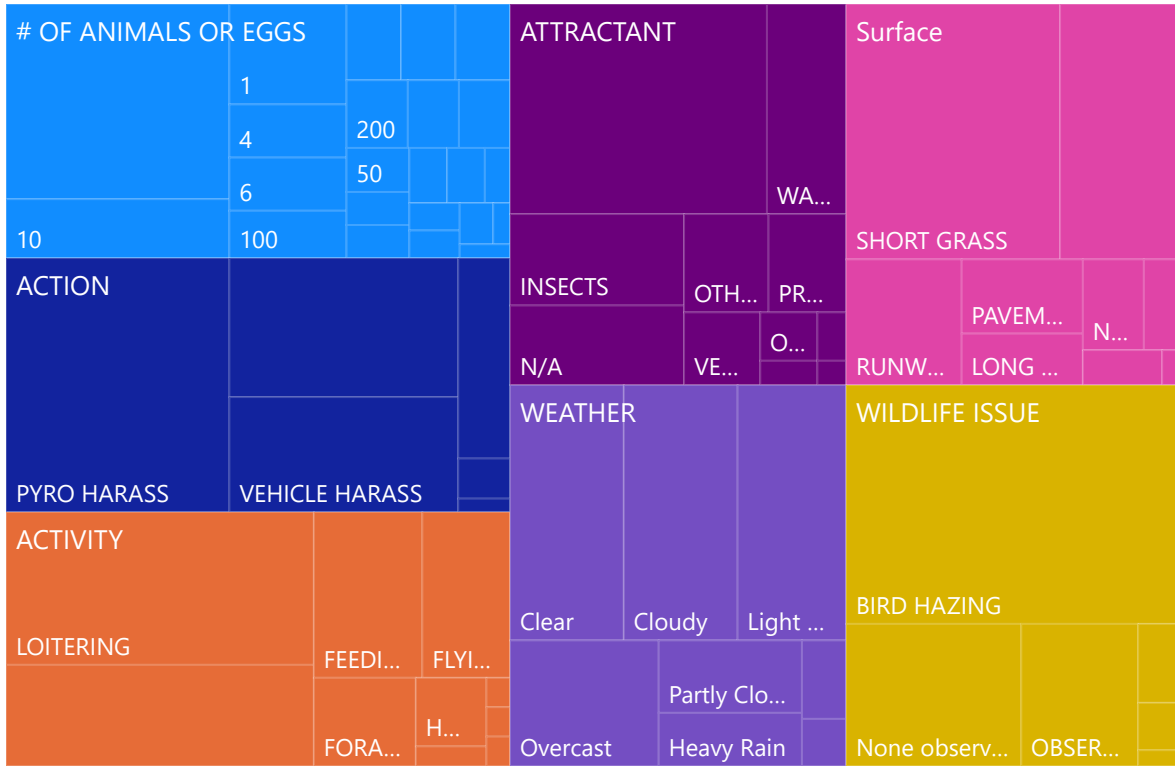
| Month        | 2018 Total Operations | 2019 Total Operations | 2020 Total Operations | 2021 Total Operations | 2022 Total Operations | 2023 Total Operations | 2024 Total Operations |
|--------------|-----------------------|-----------------------|-----------------------|-----------------------|-----------------------|-----------------------|-----------------------|
| January      | 12,071                | 13,382                | 10,614                | 11,362                | 9,309                 | 10,971                | 11262                 |
| February     | 11,591                | 9,287                 | 12,908                | 9,635                 | 10,556                | 9,634                 | 11981                 |
| March        | 14,591                | 15,280                | 11,254                | 13,612                | 13,142                | 12,268                | 13846                 |
| April        | 14,303                | 13,740                | 7,996                 | 14,925                | 12,067                | 16,106                | 13334                 |
| May          | 18,242                | 18,365                | 10,797                | 14,774                | 13,700                | 12,760                | 14283                 |
| June         | 18,133                | 17,876                | 12,715                | 16,072                | 14,919                | 14,562                | 14338                 |
| July         | 20,474                | 19,629                | 15,497                | 19,449                | 17,567                | 16,763                | 16657                 |
| August       | 18,506                | 20,903                | 14,869                | 17,575                | 17,955                | 16,045                | 15017                 |
| September    | 16,062                | 16,830                | 11,489                | 16,625                | 15,160                | 14,780                | 13029                 |
| October      | 14,828                | 15,486                | 13,467                | 14,686                | 12,126                | 14,003                | 10763                 |
| November     | 13,310                | 13,445                | 10,729                | 10,925                | 11,251                | 12,463                | 8625                  |
| December     | 11,157                | 12,005                | 11,581                | 9,929                 | 8,770                 | 10,698                | 6424                  |
| <b>Total</b> | <b>183,268</b>        | <b>186,228</b>        | <b>143,916</b>        | <b>169,569</b>        | <b>156,522</b>        | <b>161,053</b>        | <b>149559</b>         |

Year

Quarter

Month

# Count of REQUESTID by CUSTFIELDNAME and CUSTFIELDVALUE



INITIATEDBY  CATEGORY  CUSTFIELDNAME

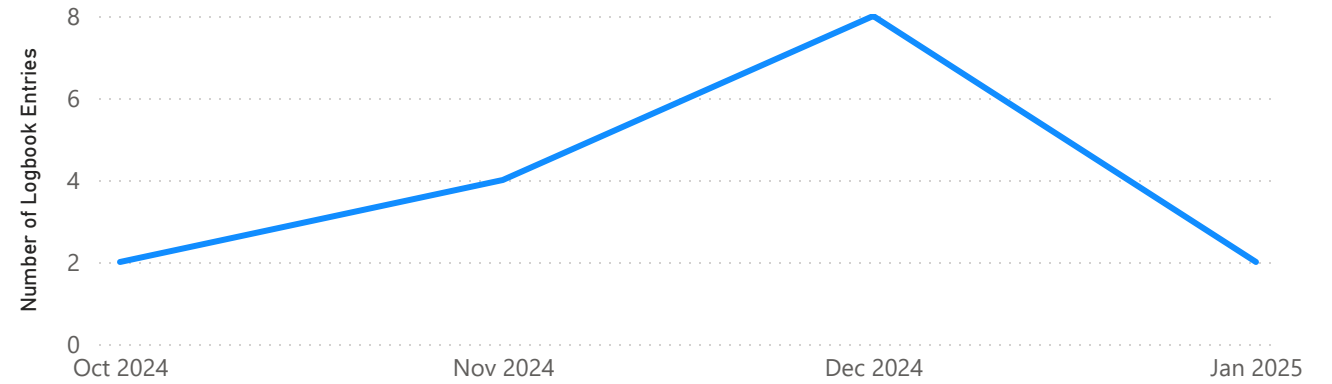
DATETIMEINIT

7/31/2024 - 1/30/2025

# 185

Count of REQUESTID

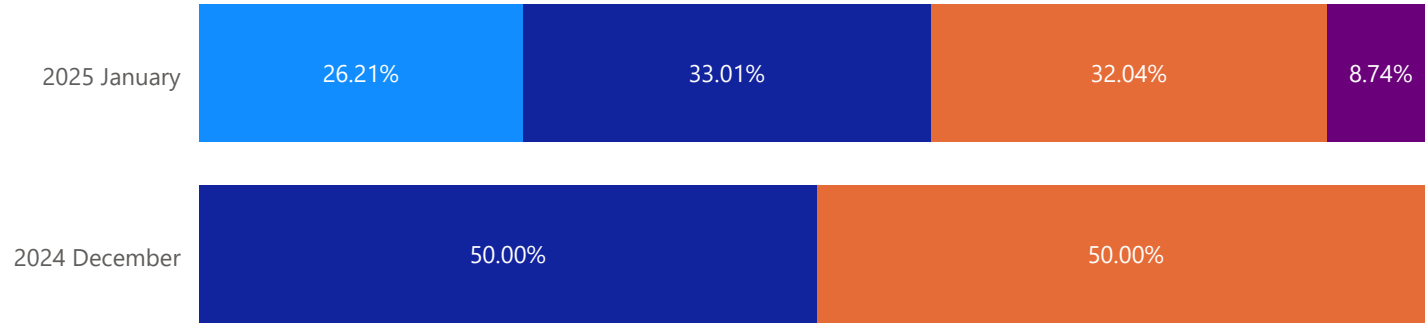
## Number of Logbook Entries Created Over Time



| REQUESTID | # OF ANIMALS OR EGGS | ACTION         | ACTIVITY     | ATTRACTANT   | Surface     | WEATHER  | WILDLIFE ISSUE |
|-----------|----------------------|----------------|--------------|--------------|-------------|----------|----------------|
| 13618     |                      |                |              |              |             | Clear    | None observed  |
| 13613     |                      |                |              |              |             | Clear    | None observed  |
| 13606     | 1                    | VEHICLE HARASS | HUNTING      | PREY SPECIES | Building    | Clear    | BIRD HAZING    |
| 13597     | 8                    | OBSERVED       | LOITERING    |              | SHORT GRASS | Overcast | OBSERVED       |
| 13586     | 2                    | VEHICLE HARASS | LOITERING    | N/A          | SHORT GRASS | Clear    | BIRD HAZING    |
| 13569     | 2                    | VEHICLE HARASS | LOITERING    | N/A          | SHORT GRASS | Clear    | BIRD HAZING    |
| 13566     |                      |                |              |              |             | Clear    | None observed  |
| 13561     |                      |                |              |              |             | Clear    | None observed  |
| 13556     | 10                   | OBSERVED       | LOITERING    |              | SHORT GRASS | Clear    | OBSERVED       |
| 13551     | 100                  | VEHICLE HARASS | FLYING LOCAL | OTHER BIRDS  | SHORT GRASS | Cloudy   | BIRD HAZING    |

## Inspection Types by Month as a Percentage

Inspection Type ● Part 139 Continuous ● Part 139 Day ● Part 139 Night ● Part 139 Special



INITIATEDDATE

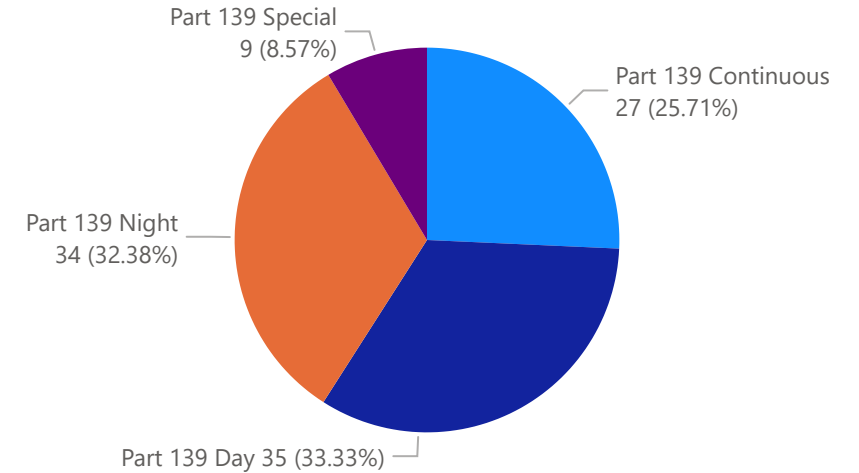
Last  Months

12/31/2024 - 1/30/2025

105

INSPECTIONID

## Part 139 Inspections by Type

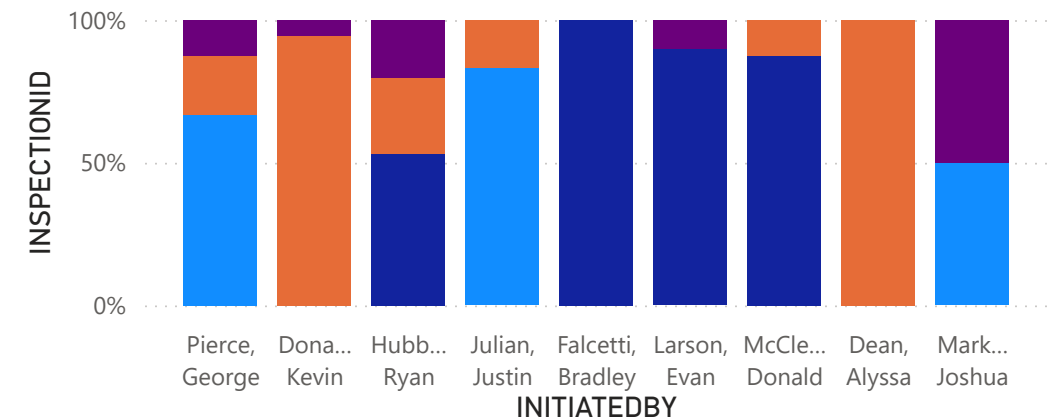


| INSPECTIONID         | INITIATEDDATE | INSPTEMPLATENAME    | INITIATEDBY       | INSPECTEDBY       | CLOSEDBY       | STATUS |
|----------------------|---------------|---------------------|-------------------|-------------------|----------------|--------|
| <a href="#">7372</a> | 01/30/2025    | Part 139 Special    | Markovich, Joshua | Markovich, Joshua |                | OPEN   |
| <a href="#">7371</a> | 01/29/2025    | Part 139 Night      | Julian, Justin    | Julian, Justin    | Julian, Justin | CLOSED |
| <a href="#">7370</a> | 01/29/2025    | Part 139 Continuous | Pierce, George    | Pierce, George    | Pierce, George | CLOSED |
| <a href="#">7369</a> | 01/29/2025    | Part 139 Special    | Pierce, George    | Pierce, George    |                | OPEN   |
| <a href="#">7368</a> | 01/28/2025    | Part 139 Night      | Donahue, Kevin    | Donahue, Kevin    | Donahue, Kevin | CLOSED |
| <a href="#">7367</a> | 01/28/2025    | Part 139 Day        | Larson, Evan      | Larson, Evan      | Larson, Evan   | CLOSED |
| <a href="#">7366</a> | 01/28/2025    | Part 139 Special    | Pierce, George    | Pierce, George    | Pierce, George | CLOSED |
| <a href="#">7365</a> | 01/28/2025    | Part 139 Special    | Hubbard, Ryan     | Hubbard, Ryan     | Hubbard, Ryan  | CLOSED |
| <a href="#">7364</a> | 01/27/2025    | Part 139 Night      | Donahue, Kevin    | Donahue, Kevin    | Donahue, Kevin | CLOSED |
| <a href="#">7363</a> | 01/27/2025    | Part 139 Day        | Larson, Evan      | Larson, Evan      | Larson, Evan   | CLOSED |

Total

## Inspection Types by Employee as a Percentage

Inspection Type ● Part 139 Conti... ● Part 139 Day ● Part 139 Night ● Part 139 Sp...



# All Logbook Entries



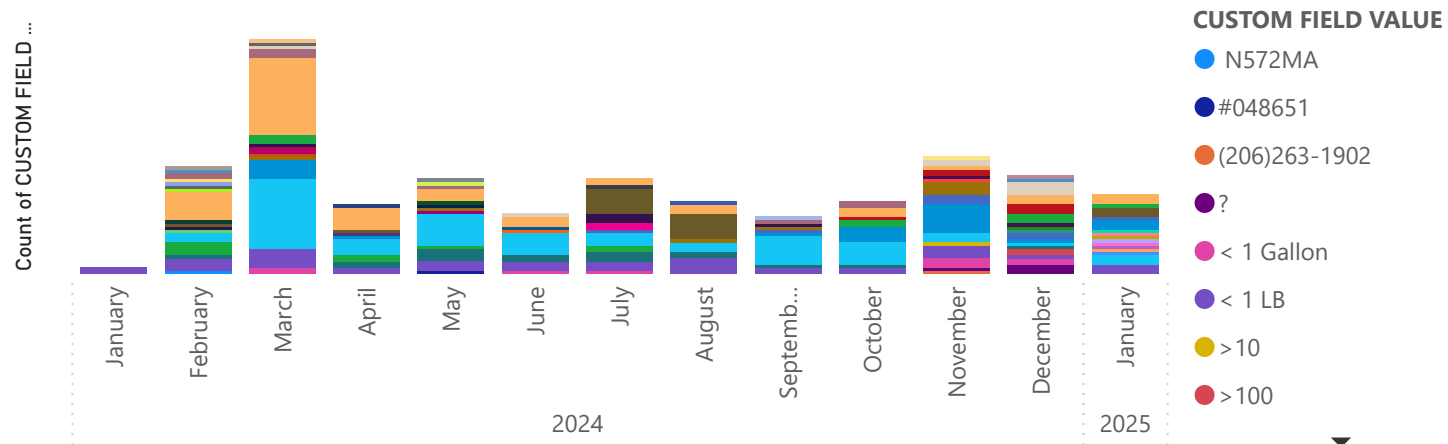
## How To Use This Report:

1. Set the Date Range Below.
2. Use the Logbook Drill Down arrows ( V ) to refine the visuals.
3. Use Ctrl+ to select multiple values.
4. Click on the 'Reset Slicers' button above to clear all filters.

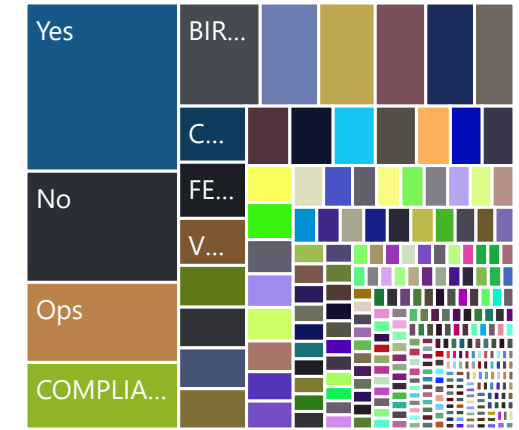
Date ▼

Last ▼ 1 Years ▼

## Count of Custom Field Name and Custom Field Values Over Time



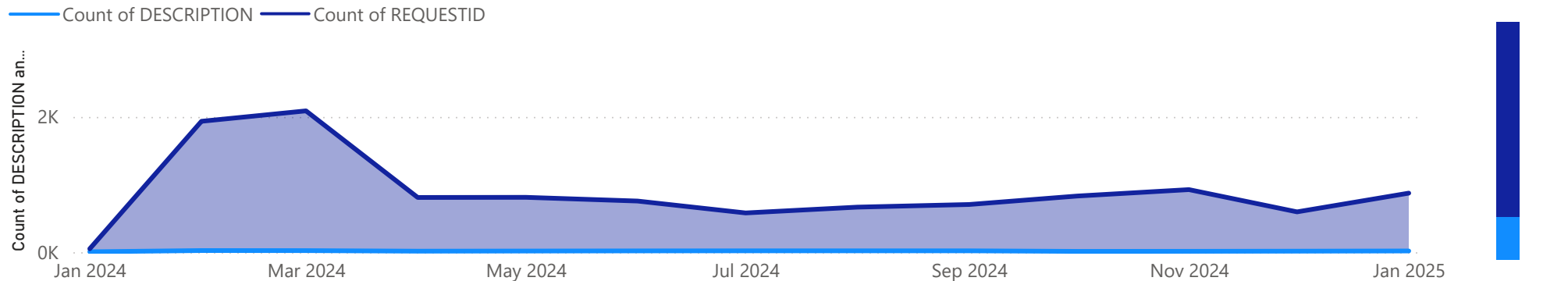
## Count of Custom Field Value and Logbook Entry



## Logbook Drill Down Slicer

- Aircraft Alert
- Aircraft Incident / Accident / D...
- Communications
- Engine Run-Up
- Escort
- Fire Alarm - Airside
- Fire Alarm - Landside
- FOD
- Fuel Spill
- Gate Usage

## Count of Logbook Description and Logbook Entries Over Time



## Logbook 'Custom Fields' Details

(only Logbook Entries with Custom Fields values will show here)

Count of Logbook Entries with CF values: **1194**

| REQUESTID | # Birds Seen | # Birds Struck | # OF ANIMALS OR EGGS | # of Crew | # of Crew (archived) |
|-----------|--------------|----------------|----------------------|-----------|----------------------|
| 13621     |              |                |                      |           |                      |
| 13620     |              |                |                      |           |                      |
| 13619     |              |                |                      |           |                      |
| 13618     |              |                |                      |           |                      |
| 13617     |              |                |                      |           |                      |

## General Details Based on 'Description'

(this table will not update based on 'Custom Field' selections)

Count of Logbook Entries based on Description: **1307**

| REQUESTID             | DATETIMEINIT | DESCRIPTION         | STATUS | DETAILS   |
|-----------------------|--------------|---------------------|--------|---|
| <a href="#">13621</a> | 01/30/2025   | Security Inspection | CLOSED | Landside perimeter inspection                     |
| <a href="#">13620</a> | 01/29/2025   | Security Inspection | CLOSED | Patrolled Vehicle Service Road at Perimeter Road. |
| <a href="#">13619</a> | 01/29/2025   | Runway Closure      | OPEN   |   |
| <b>Total</b>          |              |                     |        |   |